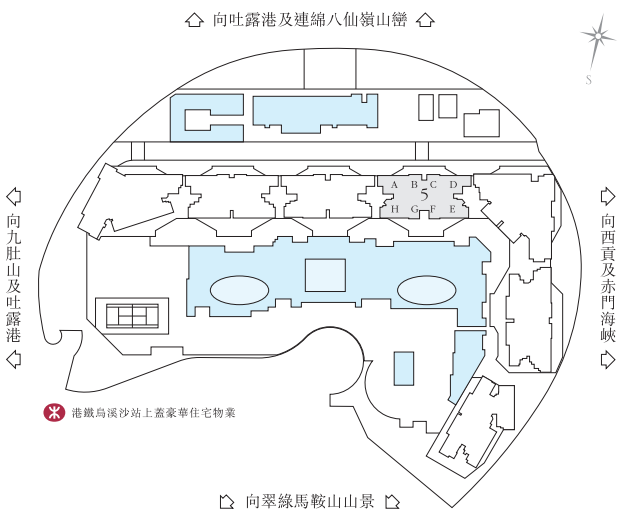
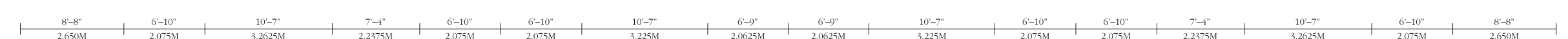
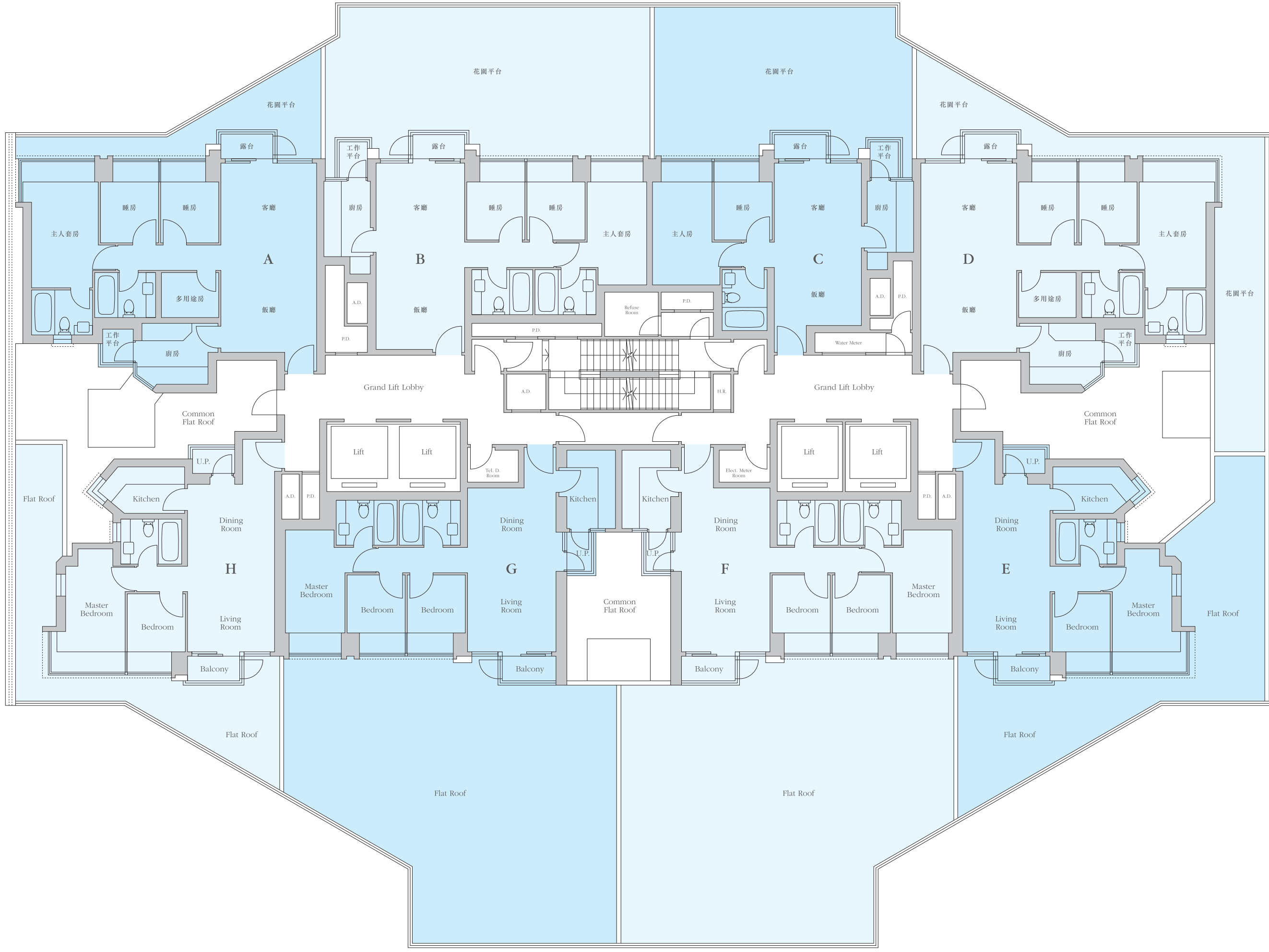
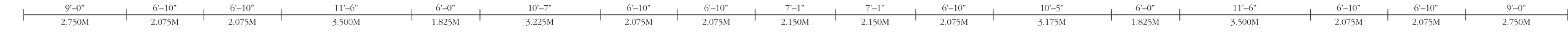


TOWER 5

5th Floor Plan

五樓平面圖



- Notes:
- Balconies and utility platforms are non-enclosed areas.
 - Residential floors are on 5/F and above. There are no 13, 14, 24, 34, 40-49, 53, 54, 58 & 64/F. Refuge floor is located on 30/F.
 - Outdoor units of split-type air-conditioners are installed in common flat roofs and/or flat roofs.
 - There may be architectural features and/or exposed pipes on external walls of some of the floors. For details, please refer to the latest approved building plans.
 - Common drain pipes enclosed in cladding are located adjacent to balcony and/or utility platform of some residential units.
 - There are ceiling bulkheads at living/dining room, bedrooms, store, corridor and/or kitchen of some residential units for the air-conditioning system and/or M&E services.
 - The internal ceiling height within residential units may vary due to structural, architectural and/or decoration design variations.
 - The internal areas of residential units on upper floors are in general slightly larger than lower floors due to possible reduced thickness of structural walls on those floors.
 - All dimensions of residential units are for reference only.
 - All plans are subject to amendments as approved by the Buildings Department and Lands Department.
 - Potential purchasers are also requested to refer to the building model placed at the sales office for the physical appearances and architectural features of the Development especially those of or affecting the residential units they intend to purchase. The aforesaid model is for reference only and shall be subject to the final plans as approved by the Buildings Department and Lands Department.
 - Please refer to the Location Plan and the extract of Outline Zoning Plan under the Information for Reference section of the sales brochure for information relating to the nearby communal facilities.
 - Please refer to "Salient Points of the Land Grant" and "Salient Points of the D/M/C" under the Information for Reference section of the sales brochure for information relating to Railway Station Government Accommodation which includes the public transport interchange.
 - There may be exposed M&E services at the ceiling of utility platform, toilet and/or store in kitchen of some residential units.
 - Residential floor-to-floor storey height approx. 10 (3,050mm).
 - All contents are for reference only. All information shall be subject to the terms and conditions of the Agreement for Sale and Purchase. In case of a discrepancy between the English and Chinese version of the contents of this page, the former shall prevail.

- 附註:
- 露台及工作平台為不可封閉之地方。
 - 住宅單位由5樓開始，不設13、14、24、34、40-49、53、54、58及64樓。30樓為層火層。
 - 分體式冷氣室外機裝置於公用平台及/或花園平台。
 - 部份樓層外牆範圍設有建築裝飾及/或外露喉管。詳細資料請參考最後批准之圖則。
 - 部份住宅單位之露台及/或工作平台側外牆裝飾內藏公用去水渠。
 - 部份住宅單位之客廳、睡房、多用室、走廊及/或廚房之裝飾層內裝置冷氣喉管及/或其其他機電設備。
 - 住宅單位之天花高度將因應其結構、建築設計及/或裝修設計上的需要而有差異。
 - 高層住宅單位之室內面積通常較低層住宅單位稍大，因其承力結構可能比低層單位稍薄。
 - 圖中所有長度單位只供參考用途。
 - 詳細訂正圖則以屋宇署及地政總署最後批准之圖則為準。
 - 準買家請參考設置於售樓處的物業發展項目模型，以便清楚了解該物業發展項目及其有意購買的住宅單位的外牆及建築裝飾。特別是屬於影響該住宅單位之建築裝飾。該物業發展項目模型僅供參考，一切以屋宇署及地政總署最後批准之圖則為準。
 - 有關此物業發展項目鄰近的公共社區建設及設施等資料，請參閱售樓書於「參考資料」部份內展示的位置圖及分區計劃大綱圖錄。
 - *有關港島沙田站及政府設施公共運輸交匯處的資料，請參閱售樓書於「參考資料」部份內的「地契重要條款」及「公眾重要條款」。
 - 部份住宅單位之工作平台、洗手間及/或工作間之天花部份設有外露喉管。
 - 住宅樓層高度(兩地台間之距離): 約10呎(3,050mm)
 - 一切內容以英文版本為準及僅供參考。所有資料均按獲發賣合約條款所訂為準。

Podium Garden 平台花園	13	Club House 會所	14	Club House 會所	15	Club House 會所	16	Club House 會所	17	Club House 會所	18	Club House 會所	19	Club House 會所	20	Club House 會所	21	Club House 會所	22	Club House 會所	23	Club House 會所	24	Club House 會所	25	Club House 會所	26	Club House 會所	27	Club House 會所	28	Club House 會所	29	Club House 會所	30	Club House 會所	31	Club House 會所	32	Club House 會所	33	Club House 會所	34	Club House 會所	35	Club House 會所	36	Club House 會所	37	Club House 會所	38	Club House 會所	39	Club House 會所	40	Club House 會所	41	Club House 會所	42	Club House 會所	43	Club House 會所	44	Club House 會所	45	Club House 會所	46	Club House 會所	47	Club House 會所	48	Club House 會所	49	Club House 會所	50	Club House 會所	51	Club House 會所	52	Club House 會所	53	Club House 會所	54	Club House 會所	55	Club House 會所	56	Club House 會所	57	Club House 會所	58	Club House 會所	59	Club House 會所	60	Club House 會所	61	Club House 會所	62	Club House 會所	63	Club House 會所	64	Club House 會所	65	Club House 會所	66	Club House 會所	67	Club House 會所	68	Club House 會所	69	Club House 會所	70	Club House 會所	71	Club House 會所	72	Club House 會所	73	Club House 會所	74	Club House 會所	75	Club House 會所	76	Club House 會所	77	Club House 會所	78	Club House 會所	79	Club House 會所	80	Club House 會所	81	Club House 會所	82	Club House 會所	83	Club House 會所	84	Club House 會所	85	Club House 會所	86	Club House 會所	87	Club House 會所	88	Club House 會所	89	Club House 會所	90	Club House 會所	91	Club House 會所	92	Club House 會所	93	Club House 會所	94	Club House 會所	95	Club House 會所	96	Club House 會所	97	Club House 會所	98	Club House 會所	99	Club House 會所	100	Club House 會所
-----------------------	----	------------------	----	------------------	----	------------------	----	------------------	----	------------------	----	------------------	----	------------------	----	------------------	----	------------------	----	------------------	----	------------------	----	------------------	----	------------------	----	------------------	----	------------------	----	------------------	----	------------------	----	------------------	----	------------------	----	------------------	----	------------------	----	------------------	----	------------------	----	------------------	----	------------------	----	------------------	----	------------------	----	------------------	----	------------------	----	------------------	----	------------------	----	------------------	----	------------------	----	------------------	----	------------------	----	------------------	----	------------------	----	------------------	----	------------------	----	------------------	----	------------------	----	------------------	----	------------------	----	------------------	----	------------------	----	------------------	----	------------------	----	------------------	----	------------------	----	------------------	----	------------------	----	------------------	----	------------------	----	------------------	----	------------------	----	------------------	----	------------------	----	------------------	----	------------------	----	------------------	----	------------------	----	------------------	----	------------------	----	------------------	----	------------------	----	------------------	----	------------------	----	------------------	----	------------------	----	------------------	----	------------------	----	------------------	----	------------------	----	------------------	----	------------------	----	------------------	----	------------------	----	------------------	----	------------------	----	------------------	----	------------------	----	------------------	----	------------------	----	------------------	----	------------------	----	------------------	----	------------------	-----	------------------