

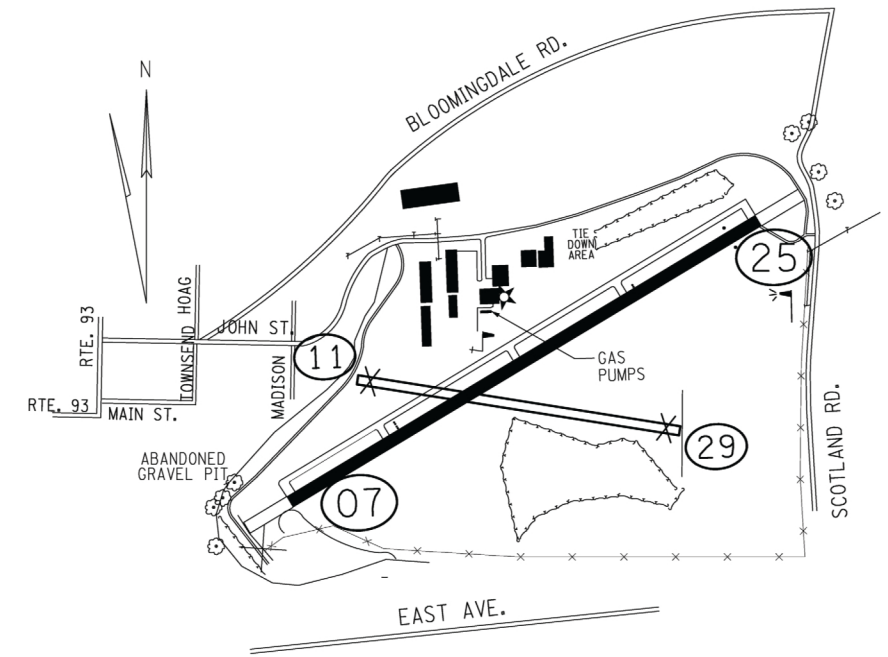


Runways
7/25: 3268 x 75 (ASPH-G)
11/29: CLOSED

Coordinates
Latitude 43-01-15.2546N
Longitude 078-28-58.2842W

Communications
CTAF/U 122.725
APP/DEP 126.15 (BUFFALO)
PCL 122.725

Navigation
Elevation 840
NM from City 01 E
Instr Approach NON-PRECISION



Owner/Manager		Services	
Owner	Christian Airmen, Inc.	Fuel	100LL
Manager	Mr. John Jesson Christian Airmen, Inc. John Street – P.O. Box 126 Akron NY 14001	Airframe Repairs	MAJOR
		Engine	MAJOR
		Attended	ALL/ALL/0800-SUNSET
		Airline Airport	NO
Phone	(716) 542-4607	Transportation	
Fax	(716) 542-4698	Food	
E-mail		Lodging	
Web site	http://www.christianairmen.com/		

FBO
CHRISTIAN AIRMEN INC
(716) 542-4607 Freq
122.725

Remarks
DEER AND TURKEY INVOF ARPT. RWY 11/29 IS
CLOSED INDEFINITELY. ACTVT MIRL RWY 07/25,
PAPI RYS 07 & 25, & REIL RY 25 - CTAF. FOR
ADD'L ARPT INFO GO TO: <http://www.gcr1.com/5010web/>