

A large school of fish, possibly sardines or anchovies, swimming in clear blue water. The fish are densely packed and move in a coordinated pattern, creating a shimmering effect. The background is a deep blue, suggesting an underwater environment.

MALAYSIA MARINE PROTECTED AREAS

MANAGEMENT OF MARINE PARKS

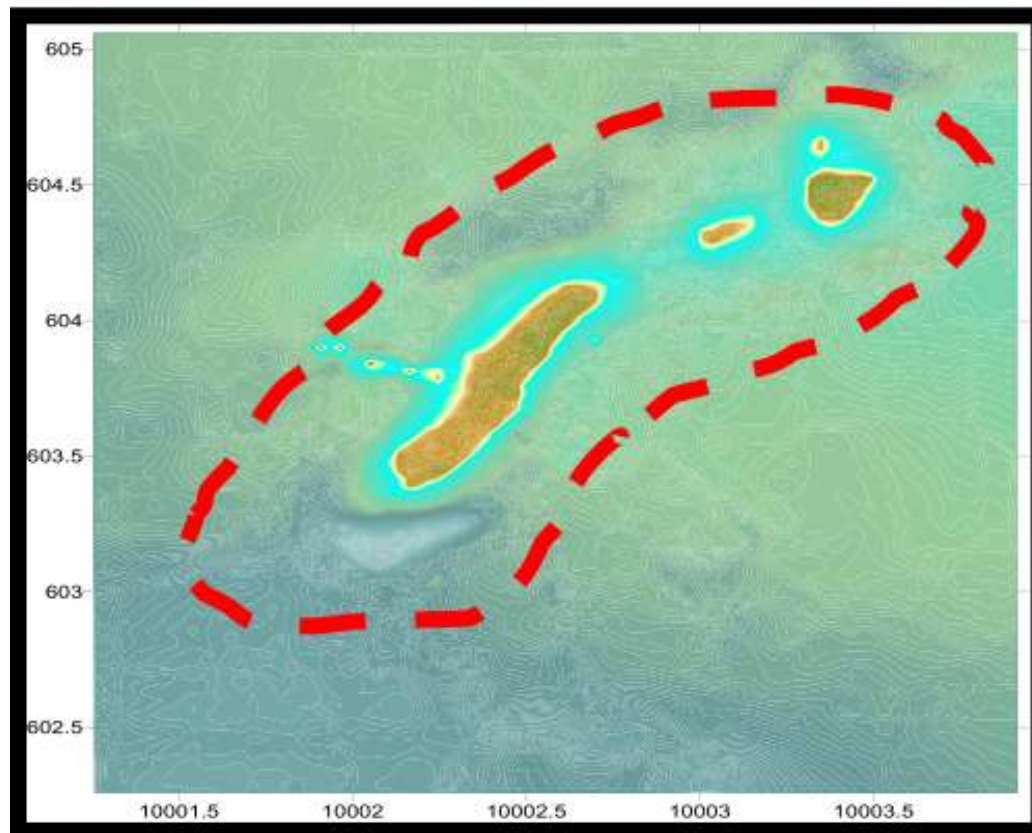
- Malaysia marine parks are governed by a **three** tiered system which involves:



- Federal Government** - Policies are formulated by the Federal Government to govern national development.
- State Government** - Has control over land matters of the Marine Park islands where they have the authority to develop and decide on land usage of the islands.
- Local Authority** - such as the District and Land Office implements many of the decisions of the State Government and administer amenities of island and in principal manage physical development activities.

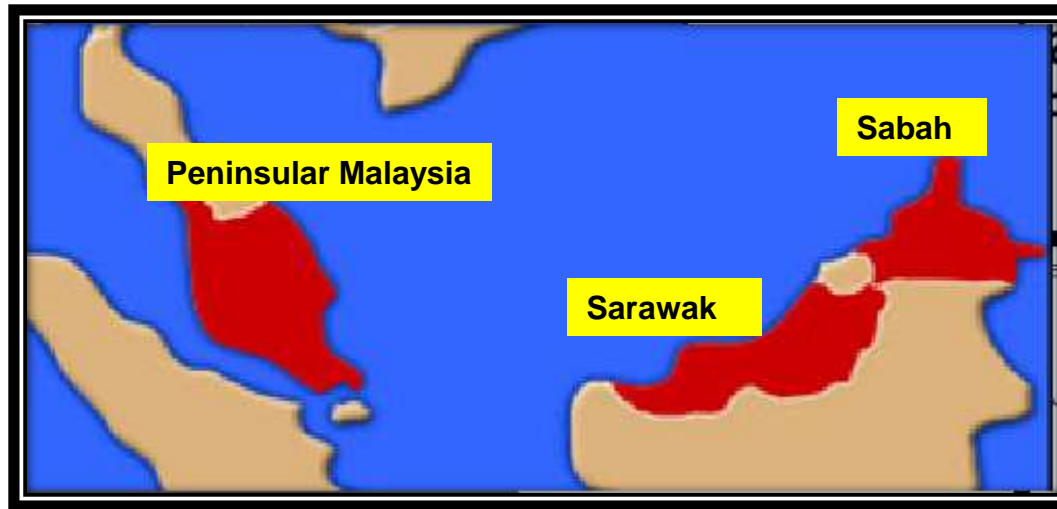
MALAYSIA'S MARINE PROTECTED AREAS

- Marine Parks is a protected area of sea zoned **one** or **two** nautical miles from the shore at lowest low tide.



Boundaries of a marine park

MALAYSIA'S MARINE PROTECTED AREAS



| No. | Location of Marine Parks | Gazettes | No. of Marine Parks |
|-------|--------------------------|---|-------------------------------|
| 1 | Peninsular Malaysia | Marine Parks Order of 1994 of the Fisheries Act | 42 marine parks |
| 2 | Sarawak | The National Park and Reserve Ordinance | 3 marine parks |
| 3 | Sabah | Parks Enactment, 1984 Wildlife Conservation Enactment 1997 | 6 marine parks and 2 proposed |
| Total | | | 53 marine parks |

A) Marine Parks of Peninsular Malaysia

- Managed by the Marine Park Department, Ministry of Natural Resources and Environment
- 42 islands declared as marine parks in Peninsular Malaysia are grouped into six Marine Park centres for better administration and management.

B) Marine Protected Areas in Sarawak

Sarawak has three (3) marine parks gazetted under the National Park and Reserve Ordinance.

1. Pulau Talang-Talang - gazetted for the turtle conservation
2. Pulau Satang-Satang - gazetted for the turtle conservation
3. Miri-Sibuti Marine Park - gazetted for its significant coral reef biodiversity.



C) Marine Protected Areas in Sabah

- Sabah has five (5) marine parks gazetted under Sabah Parks Enactment, 1984 (amended 2002).
1. Tunku Abdul Rahman Park 1974
 2. The Turtle Islands Park 1997
 - ❑ *Designated as a protected area to protect the nesting sites for green turtles and hawksbill turtles.*
 3. Pulau Tiga Park 1978
 - ❑ *Designated to protect its unique island ecosystem which includes mud volcanoes, coral reefs and nesting habitat for sea snake.*
 4. Sugud Islands Marine Conservation Area (SIMCA)
 5. Tun Sakaran Marine Park 2004
 5. Pulau Sipadan which is under the authority of National Security Council is now a proposed as an MPA under the management of the Sabah Parks.
 6. Proposed Tun Mustapha Park 2003
 7. Proposed Ligitan 2010

Sabah Marine Parks

Total Areas of Sabah Marine Parks 57,546.5 ha

Sea: 54350.8 ha

Land: 3195.7 ha

Number of Islands: 20 buah pulau



TUNKU ABDUL RAHMAN PARK

TURTLE ISLANDS PARK

PULAU TIGA PARK

TUN SAKARAN MARINE PARK

SIPADAN ISLAND PARK



PROPOSED PARKS



THANK YOU

