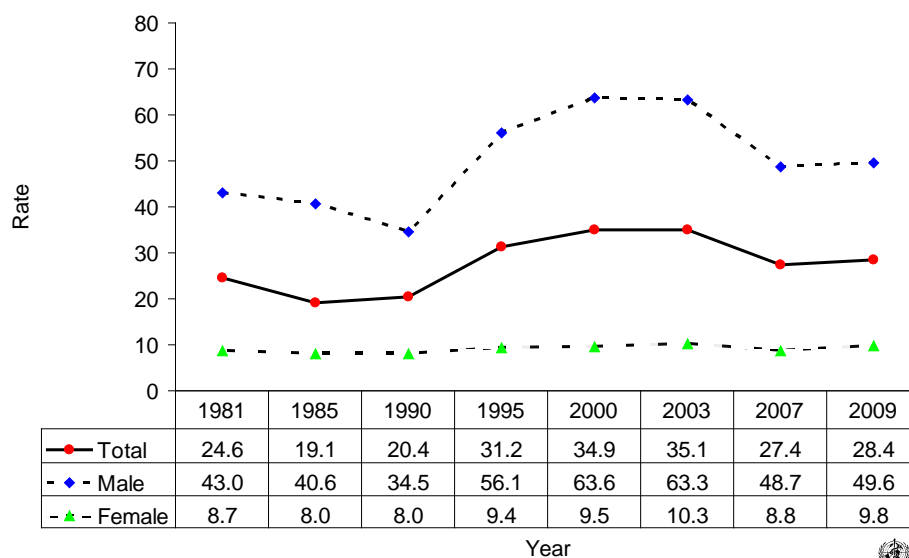
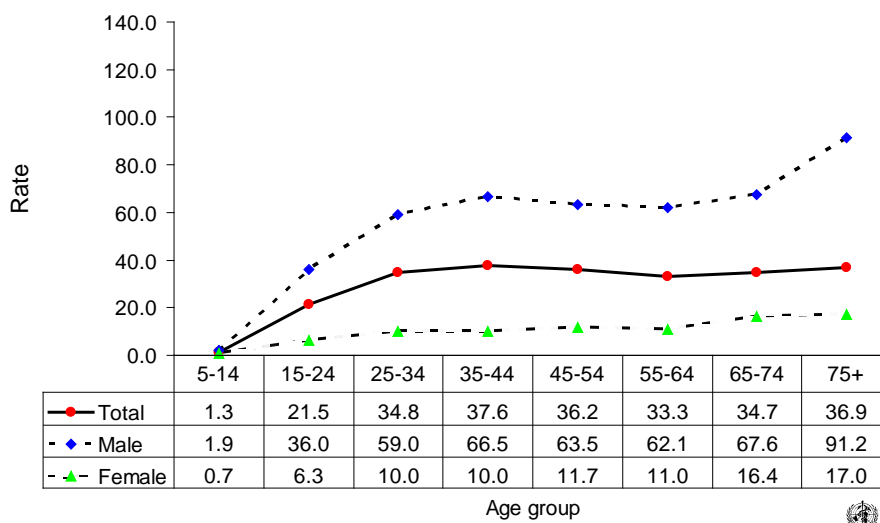


Suicide rates (per 100,000), by gender, Belarus, 1981-2009.



Suicide rates (per 100,000), by gender and age, Belarus, 2009.



Number of suicides by age group and gender. BELARUS, 2009.

Age (years)	5-14	15-24	25-34	35-44	45-54	55-64	65-74	75+	All
Males	9	270	445	439	464	282	184	145	2238
Females	3	45	74	69	96	64	80	74	505
Total	12	315	519	508	560	346	264	219	2743