

# A photographic guide to the Afrotropical genera of Castianeirinae (Corinnidae)



*Copa flavoplumosa* Simon, 1885 (Castianeirinae) – photo by Charles Haddad

Compiled by Charles Haddad

## SUBFAMILY: CASTIANEIRINAE

**Diagnosis:** The subfamily Castianeirinae comprises a group of species with relatively conservative genitalic morphology (except *Medmassa*), with the male palp pear-shaped with a distal coiled embolus and no retrolateral tibial apophysis, and the female epigyne with round spermathecae I and kidney-shaped spermathecae II. Many genera are ant-mimics (e.g. *Apochinomma*, *Corinnomma* and *Castianeira*) or velvet ant mimics (*Graptartia*), while others have cryptic colouration that enables them to camouflage in leaf litter.

**Genera from Afrotropical Region:** *Apochinomma* Pavesi, 1881; *Cambalida* Simon, 1909; *Castianeira* Keyserling, 1879; *Copa* Simon, 1885; *Corinnomma* Karsch, 1880; *Graptartia* Simon, 1896; *Merenius* Simon, 1909.



*Castianeira* sp.



*Corinnomma semiglabrum*



*Medmassa semiaurantiaca*



*Merenius alberti*

## Genus *Apochinomma* Pavesi, 1881

**Diagnosis:** Ant-mimicking spiders, with elongate carapace, elongate or globose abdomen with distinctly sclerotised petiole, small eyes, widely spaced posterior eyes in recurved row, male with elongate palp, and female with strongly sclerotised epigastric region. Abdominal markings help create an ant-like appearance.

**Species from Afrotropical Region:** *A. formicaeforme* Pavesi, 1881, several undescribed species.

*Apochinomma formicaeforme* ? F  
R.S.A., Tembe Elephant Park



Photographs: Charles Haddad

*Apochinomma formicaeforme* ? M  
R.S.A., Tembe Elephant Park



Photographs: Charles Haddad



**Juvenile *Apochinomma formicaeforme*, Sodwana Bay, South Africa (photo Charles Haddad)**

## Genus *Cambalida* Simon, 1909

**Diagnosis:** Small spiders, weakly mimetic of ants, oval carapace and abdomen without sclerotised petiole, large eyes, strongly procurved posterior eye row, male with short compact palp with several rows of thickened setae dorsally and distally on cymbium, female with large epigyne with lateral copulatory openings. Abdominal markings variable.

**Species from Afrotropical Region:** *C. coriacea* Simon, 1909, *C. fulvipes* Simon, 1909, *C. insulana* Simon, 1909; several misplaced and undescribed species.

*Cambalida fulvipes* (Simon, 1896)  
South Africa, Free State Province, Bloemfontein



Photographs: Charles Haddad

*Cambalida deminuta* (Simon, 1909)  
Types: Congo



Photographs: Charles Haddad

**Two misplaced *Castianeira* species to be transferred to *Cambalida* (Haddad, in prep.).**



***Cambalida coriacea*, Choma, Zambia (photos Charles Haddad)**

## Genus *Castianeira* Keyserling, 1879

**Diagnosis:** Small to medium sized spiders, mimetic of ants, with oval carapace and abdomen without sclerotised petiole, small eyes, slightly procurved posterior eye row, male with slightly elongate palp, female with small epigyne, usually with median copulatory openings. Abdominal markings distinct, sometimes imitating ant segmentation.

**Species from Afrotropical Region:** *C. albomaculata* Berland, 1922; *C. antinorii* (Pavesi, 1880), *C. bartholini* Simon, 1901, *C. bicolor* (Simon, 1890), *C. brunellii* Caporiacco, 1940, *C. cecchii* (Pavesi, 1883), *C. delicatula* Simon, 1910, *C. deminuta* Simon, 1910\*, *C. depygata* Strand, 1916\*, *C. formosula* Simon, 1910, *C. fulvipes* Simon, 1896\*, *C. fusconigra* Berland, 1922, *C. insulicola* Strand, 1916, *C. kibonotensis* Lessert, 1921\*, *C. loricifera* (Simon, 1885), *C. majungae* Simon, 1896, *C. mestralli* Lessert, 1921\*, *C. micaria* (Simon, 1885), *C. phaeochroa* Simon, 1910, *C. soyauxi* (Karsch, 1879), *C. thomensis* Simon, 1910, *C. venustula* (Pavesi, 1895); several undescribed species.

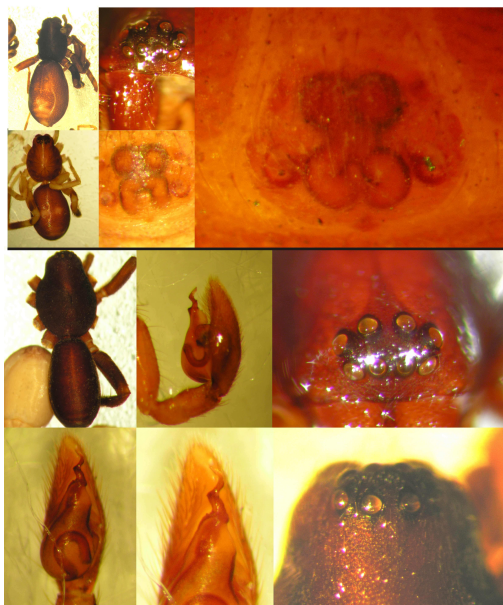
\* - misplaced

*Castianeira delicatula* Simon, 1910  
Types: Ivory Coast, Freetown



Photographs: Charles Haddad

*Castianeira majungae* Simon, 1896  
Types: Madagascar: Majunga



Photographs: Charles Haddad

**Genus *Corinnomma* Karsch, 1879**

**Diagnosis:** Medium-sized spiders, mimetic of ants, with oval-elongate carapace and globose abdomen with sclerotised petiole, small eyes, slightly recurved posterior eye row, male with slightly elongate palp, female with small epigyne, usually with lateral copulatory openings. Abdominal markings distinct, imitating ant segmentation. Some species demonstrate colour polymorphism (e.g. *C. semiglabrum*). Can be mistaken for *Merenius*.

**Species from Afrotropical Region:** *C. lawrencei* Haddad, 2006, *C. semiglabrum* (Simon, 1896), *C. olivaceum* Simon, 1896.



***Corinnomma semiglabrum*, black variation (Ndumo Game Reserve, South Africa) and red variation (Choma, Zambia) (photos Charles Haddad)**

---

**Genus *Graptartia* Simon, 1896**

**Diagnosis:** Small to medium-sized spiders, mimetic of velvet ants (Mutillidae), carapace orange to dark red with long erect setae, abdomen black with white markings, male palp compact with short distal embolus, female with lateral copulatory openings. Abdomen covered in plumose or clavate setae.

**Species from Afrotropical Region:** *G. granulosa* Simon, 1896, *G. mutillica* Haddad, 2004, *G. tropicalis* Haddad, 2004.



*Graptartia granulosa*, Livingstone, Zambia (photo Charles Haddad)



*Graptartia mutillica*, Bloemfontein, South Africa and *G. tropicalis*, Fisherhaven, South Africa (photos Charles Haddad)

---

**Genus *Medmassa* Simon, 1887**

**Diagnosis: Medium sized spiders, with broadly oval carapace and abdomen without sclerotised petiole, large eyes, strongly procurved posterior eye row, male with elongate palp with a retrolateral tibial apophysis, elongate tegulum and short curved embolus, female with large epigyne with anterior copulatory openings and single spermathecae.**

**Species from Afrotropical Region: *M. semiaurantiaca* Simon, 1910.**

*Medmassa semiaurantiaca* Simon, 1910  
Botswana, Okavango Delta, Lesideng Camp



Photographs: Charles Haddad

---



## Genus *Merenius* Simon, 1910

**Diagnosis:** Medium sized spiders, mimetic of ants, with oval-elongate carapace and oval abdomen with sclerotised petiole, small eyes, slightly recurved posterior eye row, male with slightly elongate palp, female with small epigyne, usually with median copulatory openings. Abdominal markings white and distinct on black background, sometimes imitating ant segmentation. Some species demonstrating polymorphic colouration (e.g. *M. alberti*). Can be mistaken for *Corinnomma*.

**Species from Afrotropical Region:** *Merenius alberti* Lessert, 1923, *M. concolor* Caporiacco, 1947, *M. myrmex* Simon, 1910, *M. plumosus* Simon, 1910, *M. proximus* Lessert, 1929, *M. recurvatus* (Strand, 1906), *M. simoni* Lessert, 1921, *M. solitarius* Lessert, 1946, *M. tenuiculus* Simon, 1910, *M. yemenensis* Denis, 1953; several undescribed species.



*Merenius alberti*, red and black variations, Ndumo Game Reserve, South Africa (photos Charles Haddad).



*Merenius* sp., Kafue National Park, Zambia (photo Charles Haddad)

---