

451 Reed Bunting

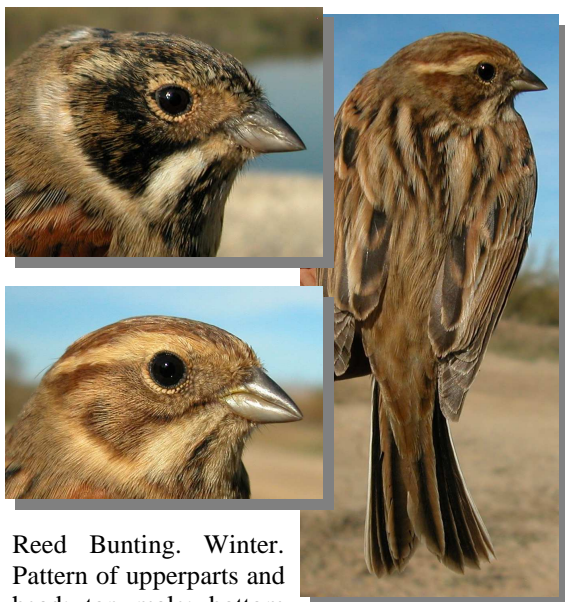


Reed Bunting. Late winter. Male (12-II).

REED BUNTING (*Emberiza schoeniclus*)

IDENTIFICATION

13-16 cm. Late winter, **male** with head and throat black and wide white band around neck. **Male** in autumn/early winter and **female** with head chestnut-reddish, supercilium and moutache buff; throat whitish. Bill grey and outer tail feathers white.



Reed Bunting. Winter. Pattern of upperparts and head: top male; bottom female.

SIMILAR SPECIES

Male in breeding plumage unmistakable. **Male** in winter and **female** recall that of a **female House Sparrow** which lacks white on tail.

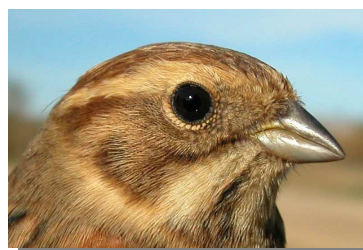


House Sparrow. Female.



SEXING

Male in breeding plumage with black head and throat. After postbreeding/postjuvenile moults **male** with similar plumage pattern than **female**, but with white band on nape; grey rump; black on base of neck feathers; black on base of crown feathers with rounded pattern. **Female** without (or quite hidden) white band on nape; brownish rump; lack black on base of neck feathers; black-grey on base of crown feathers with pointed pattern. **CAUTION:** some **females** have much white on neck and have greyish rump.



Reed Bunting. Winter. Sexing. Pattern of head: top male; bottom female.

451 Reed Bunting



Reed Bunting. Winter. Sexing. Pattern of base of crown feathers: left male; right female.



Reed Bunting. Winter. Sexing. Pattern of base of throat feathers: left male; right female.



Reed Bunting. Winter. Sexing. Pattern of nape: left male; right female.



Reed Bunting. Winter. Sexing. Pattern of rump: left male; right female.

AGEING

This species doesn't breed in Aragon, so only 2 types of age can be recognized:

1st year autumn/2nd year winter with moult limits on wing between tertiaries or between tertiaries and secondaries; tail feathers with pointed tips due to wear; tip of 8th and 9th primaries pointed; usually pale flight feathers.

Adult without moult limits on wing; tail feathers fresh and with rounded tips; tip of 8th and 9th primaries rounded; usually dark flight feathers.

CAUTION: some birds moult all tail feathers in their **postjuvenile** moult, so fresh and rounded feathers no necessary suggest an **adult** bird.



Reed Bunting. Winter. Ageing. Wear of tail feathers: left adult; right 1st year.

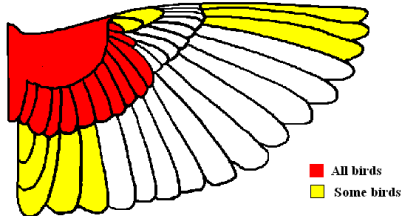


Reed Bunting. Winter. Ageing. Pattern of tips of primaries: top adult; bottom 1st year.

451 Reed Bunting

MOULT

Complete **postbreeding** moult; usually finished in October. Partial **postjuvenile** moult including body feathers, lesser, median and all greater coverts; some birds moult tertials, all tail feathers and some flight feathers; usually finished in October.



Reed Bunting. Extent of postjuvenile moult.

■ All birds
■ Some birds



Reed Bunting. Autumn. Weared male (19-X).

PHENOLOGY

I	II	III	IV	V	VI	VII	VIII	IX	X	XI	XII

STATUS IN ARAGON

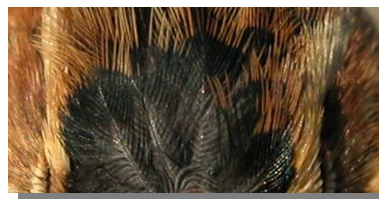
Winter visitor. Widely distributed throughout marshlands and riversides from the Region,



Reed Bunting. Female (19-X).



Reed Bunting. Outumn. Male poorly weared (21-X).

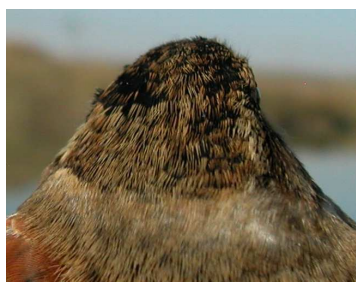


Reed Bunting. Pattern of base of crown feathers: top male (20-X); bottom female (20-X).

451 Reed Bunting



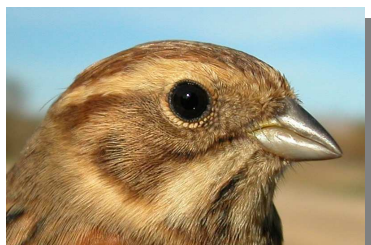
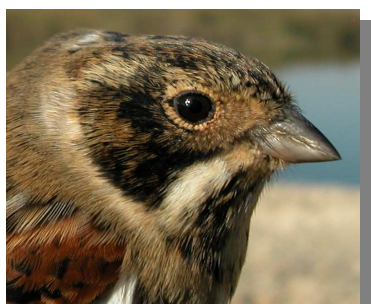
Reed Bunting. Pattern of base of neck feathers: left male (20-X); right female (20-X).



Reed Bunting. Nape pattern. From top to bottom: male in late winter (12-II); male poorly worn in autumn (21-X); male worn in autumn (19-X); female (19-X).



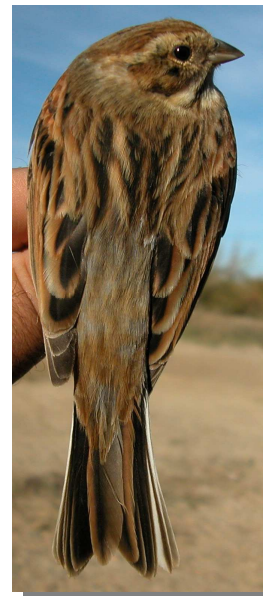
Reed Bunting. Head pattern. From top to bottom: male in late winter (12-II); male poorly worn in autumn (21-X); male worn in autumn (19-X); female (19-X).



451 Reed Bunting



Reed Bunting. Breast pattern. From top to bottom: male in late winter (12-II); male poorly weared in autumn (21-X); male weared in autumn (19-X); female (19-X).

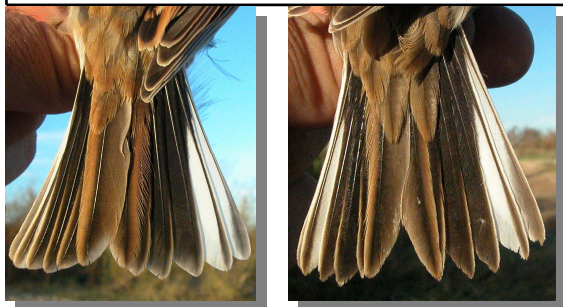


Reed Bunting. Male. Pattern of rump and upperpart: top left late winter (12-II); top right poorly weared in autumn (21-X); left weared in autumn (19-X).



Reed Bunting. Female. Pattern of rump and upperpart (19-X).

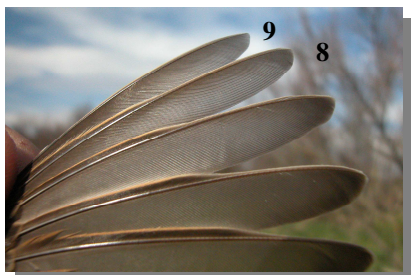
451 Reed Bunting



Reed Bunting. Tail wear: left adult (20-X); right 1st year (20-X).



Reed Bunting. Adult. Female: pattern of wing (21-X).



R e e d
B u n t i n g .
T i p
p a t t e r n
o f
8 t h
a n d
9 t h
p r i m a r i e s :
t o p
a d u l t
(1 2 - I I) ;
b o t t o m
1 s t
y e a r
(2 0 -
X) .



Reed Bunting. 1st year. Male: pattern of wing (29-X).



Reed Bunting. Adult. Male: pattern of wing (21-X).



Reed Bunting. 1st year. Female: pattern of wing (19-X).