



ANTWERP AIRPORT

2014 STATISTICAL YEARBOOK



CONTENTS

PREFACE	5
EVOLUTION 2004-2014	7
PASSENGERS.....	7
MOVEMENTS.....	7
CARGO (IN TONS).....	7
PASSENGERS.....	8
MOVEMENTS.....	8
CARGO (IN TONS).....	8
EVOLUTION PER MONTH 2004-2014	9
PASSENGERS.....	9
MOVEMENTS.....	10
CARGO (IN TONS).....	11
MONTHLY PER TYPE 2012-2014	12
SCHEDULED FLIGHTS.....	12
CHARTER FLIGHTS.....	13
AD HOC-FLIGHTS + 3 TON.....	14
AD HOC-FLIGHTS – 3 TON.....	15
LOCAL FLIGHTS.....	16
TRAINING FLIGHTS.....	17
OTHER FLIGHTS.....	18
GLOSSARY	19

Preface

Until 26 October 2014 Antwerp Airport was operated as a Separate Management Service by the Flemish government, Department of Mobility and Public Works. As from 27 October the airport is managed by the French group Egis based on a 25-year concession. This Statistical Yearbook 2014 contains detailed information about passenger numbers, the number of movements and freight at Antwerp Airport.

In 2013, 137.015 passengers made use of Antwerp Airport. over 2% compared to the previous year is mainly due to the temporary closure of the route to Manchester and the ongoing economic recession.

In 2014, 121,357 passengers travelled through Antwerp Airport. This decrease of 11,4% compared to the previous year is mainly due to a decrease of scheduled flights, including the end of the Manchester route. Scheduled flights account for some 55% of passenger numbers, while local flights, training flights and business flights each account for some 10 à 15% and charter flights over 3%.

This publication is only available electronically and can be ordered from:

LEM Antwerpen nv
Luchthaven Antwerpen
Luchthavenlei z/n
2100 Antwerpen

Tel: 03-285 65 11
Fax: 03-285 65 01

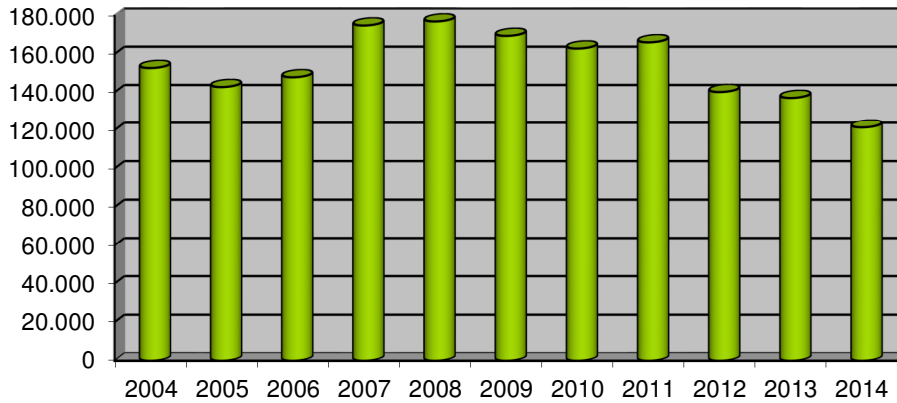
Statistical data may be reproduced provided the source is fully acknowledged.

March 2015
Nederlandstalige versie beschikbaar

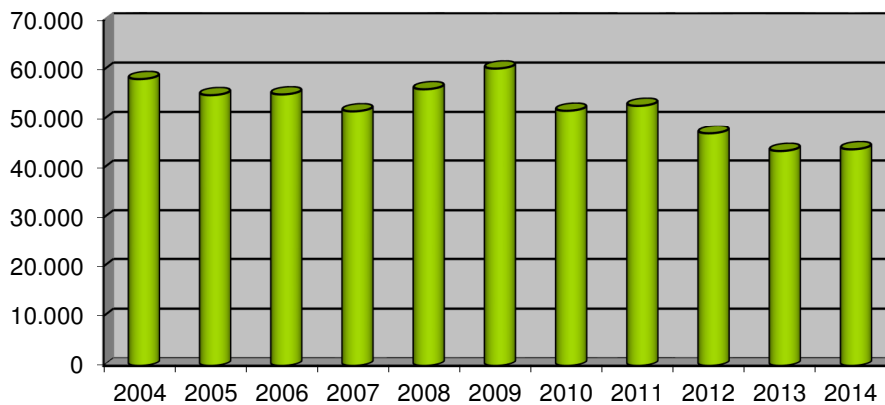
Evolution 2004-2014

	2004	2005	2006	2007	2008	2009	2010	2011	2012	2013	2014
Passengers	152.682	142.737	147.849	174.858	176.971	169.446	162.840	166.078	140.140	137.015	121.357
Movements	58.132	54.871	55.023	51.589	56.072	60.266	51.703	52.701	46.962	43.390	43.732
Cargo (in tons)	4.281	4.664	6.825	5.312	5.562	4.592	4.213	4.232	4.286	3.570	3.388

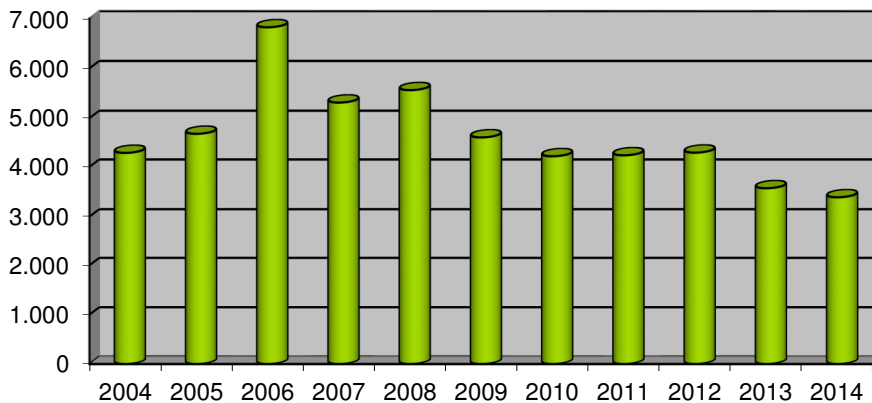
Passengers



Movements



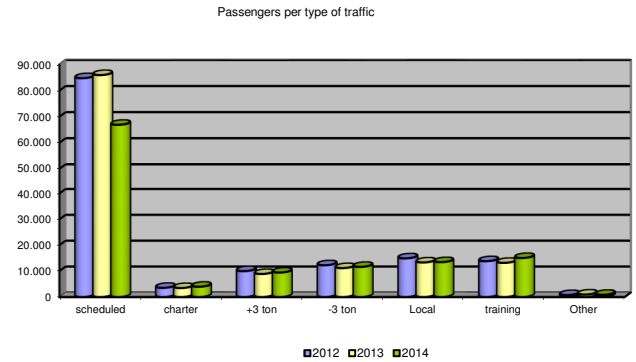
Cargo (in tons)



Per type of traffic 2012-2014

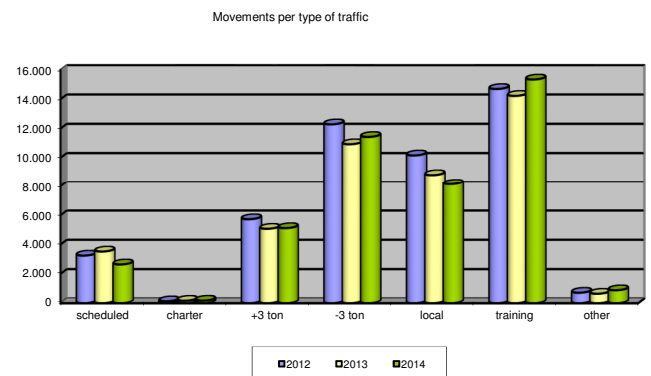
Passengers

	2012	2013	2014
Scheduled flights	84.808	86.002	66.919
Charter flights	3.533	3.452	3.963
Ad hoc +3 ton	9.989	8.902	9.452
Ad hoc -3 ton	12.267	11.163	11.642
Local flights	14.934	13.354	13.473
Training flights	13.840	13.196	15.075
Other flights	768	946	833
Total	140.139	137.015	121.357



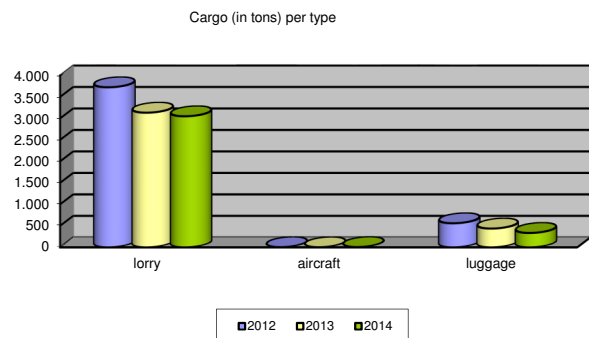
Movements

	2012	2013	2014
Scheduled flights	3.246	3.523	2.642
Charter flights	127	164	170
Ad hoc +3 ton	5.729	5.075	5.121
Ad hoc -3 ton	12.287	10.929	11.427
Local flights	10.163	8.809	8.145
Training flights	14.699	14.228	15.347
Other flights	711	643	880
Total	46.962	43.371	43.732



Cargo (in tons)

	2012	2013	2014
Lorry ¹	3.724	3.133	3.049
Aircraft	3	1	5
Luggage	559	436	334
Total	4.286	3.570	3.388



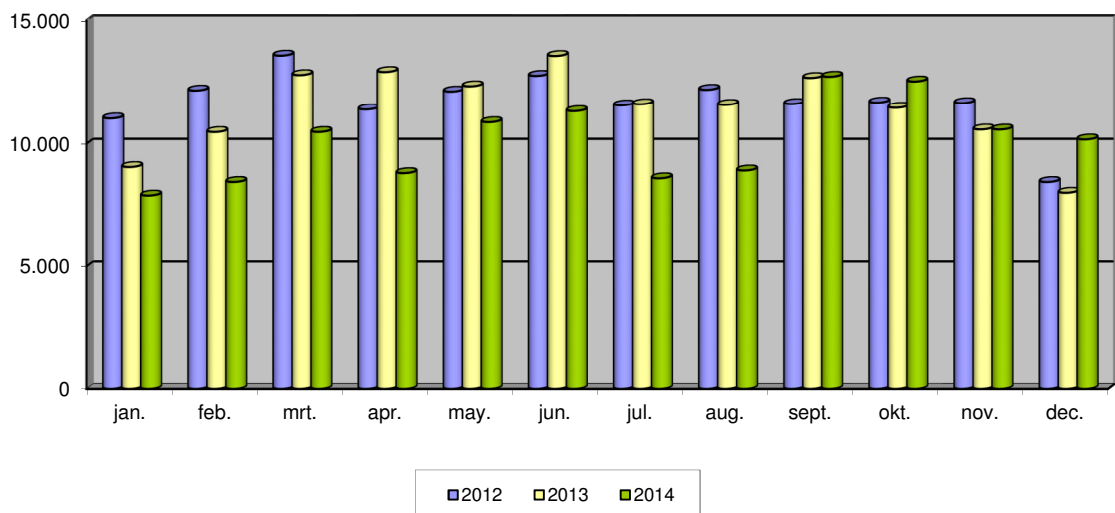
¹ Road freight by airwaybill.

Evolution per month 2004-2014

Passengers

	2004	2005	2006	2007	2008	2009	2010	2011	2012	2013	2014
January	10.045	10.057	10.066	11.572	11.651	10.833	10.854	12.038	11.026	9.058	7.905
February	11.549	10.900	10.269	12.380	13.735	11.350	13.137	11.989	12.158	10.474	8.455
March	13.767	11.771	14.279	16.692	13.360	13.648	16.123	15.019	13.572	12.785	10.476
April	12.434	11.992	13.870	16.052	17.818	14.890	11.452	14.451	11.390	12.910	8.812
May	13.116	11.933	13.695	16.459	20.613	16.325	16.105	17.215	12.117	12.330	10.872
June	14.211	14.504	14.420	14.761	16.231	18.045	17.328	16.752	12.753	13.558	11.322
July	12.266	11.727	11.424	13.654	13.862	15.616	15.061	14.151	11.555	11.601	8.604
August	12.602	11.477	9.704	13.480	12.004	11.926	11.702	12.626	12.188	11.576	8.920
September	15.714	13.578	12.464	18.068	17.734	16.855	14.313	15.440	11.611	12.667	12.717
October	13.742	11.555	14.301	16.560	15.034	15.083	15.010	13.485	11.668	11.459	12.525
November	12.745	11.846	13.464	14.530	12.609	12.520	12.079	12.125	11.648	10.578	10.576
December	10.491	11.397	9.893	10.650	12.320	12.355	9.676	10.787	8.453	8.019	10.173
Total	152.682	142.737	147.849	174.858	176.971	169.446	162.840	166.078	140.139	137.015	121.357

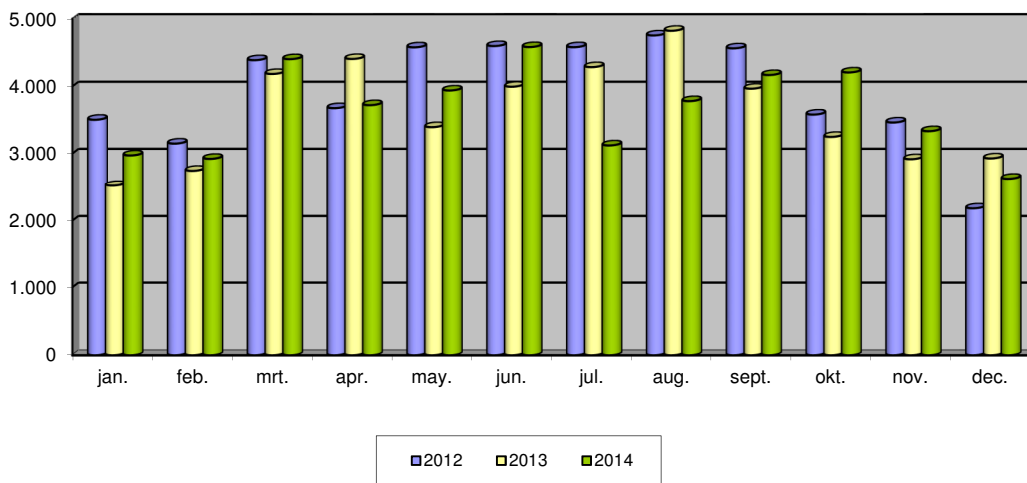
Passengers per month



Movements

	2004	2005	2006	2007	2008	2009	2010	2011	2012	2013	2014
January	3.758	3.972	3.752	3.006	3.336	3.703	2.882	3.923	3.494	2.520	2.971
February	3.816	3.494	3.262	3.482	4.430	3.827	3.064	3.198	3.145	2.745	2.921
March	5.640	4.570	5.532	4.646	3.337	5.194	5.102	5.237	4.387	4.183	4.402
April	5.384	4.634	6.078	5.190	5.302	5.714	4.644	5.384	3.664	4.405	3.708
May	5.796	4.714	5.364	4.880	6.147	6.347	5.296	5.443	4.577	3.386	3.938
June	5.330	5.200	5.922	4.657	5.314	6.416	5.607	4.876	4.596	3.994	4.581
July	5.306	5.029	5.158	4.418	4.981	6.492	5.925	4.696	4.579	4.284	3.118
August	5.978	6.218	3.980	5.419	4.885	5.831	4.949	4.828	4.753	4.822	3.767
September	5.462	5.178	5.038	4.870	5.530	5.104	4.638	4.971	4.562	3.965	4.167
October	5.064	4.530	4.586	4.281	4.833	5.304	4.575	3.995	3.570	3.243	4.205
November	3.668	3.622	3.748	3.805	3.683	2.914	2.745	3.370	3.454	2.916	3.327
December	2.930	3.710	2.603	2.935	4.294	3.420	2.276	2.780	2.181	2.927	2.627
Total	58.132	54.871	55.023	51.589	56.072	60.266	51.703	52.701	46.962	43.390	43.732

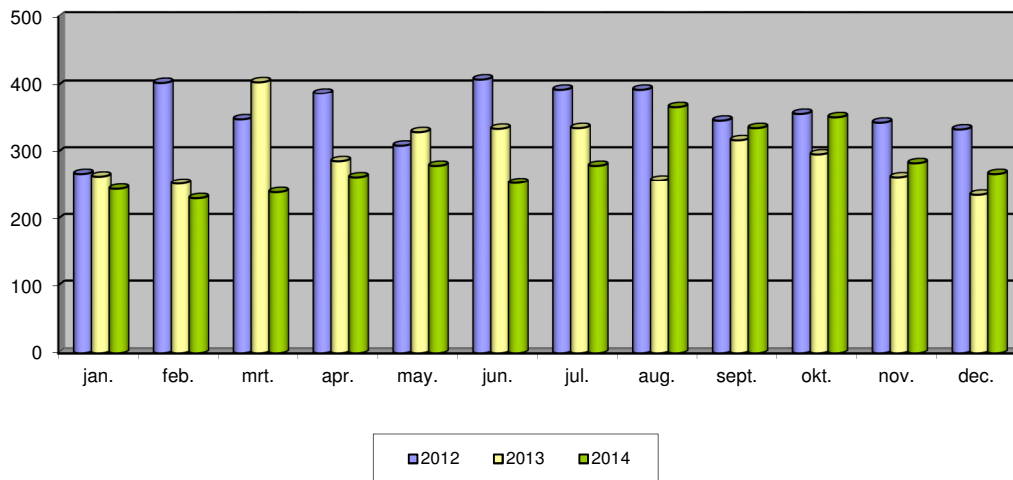
Movements per month



Cargo (in tons)

	2004	2005	2006	2007	2008	2009	2010	2011	2012	2013	2014
January	263	372	448	433	445	309	387	291	267	263	244
February	334	409	593	427	488	441	356	312	403	252	230
March	334	471	535	470	495	322	368	393	348	404	239
April	416	382	449	418	472	382	335	355	387	286	262
May	309	417	742	485	415	336	327	363	309	329	279
June	334	405	631	464	466	363	366	400	408	334	253
July	350	410	513	439	435	419	301	302	393	335	279
August	337	357	526	452	413	369	313	373	393	257	366
September	277	360	677	423	592	457	365	417	346	317	335
October	439	329	631	537	482	384	424	350	356	296	351
November	433	359	547	384	483	478	385	355	343	262	283
December	455	393	533	380	376	332	286	321	333	235	267
Total	4.281	4.664	6.825	5.312	5.562	4.592	4.213	4.232	4.286	3.570	3.388

Cargo (in tons) per month

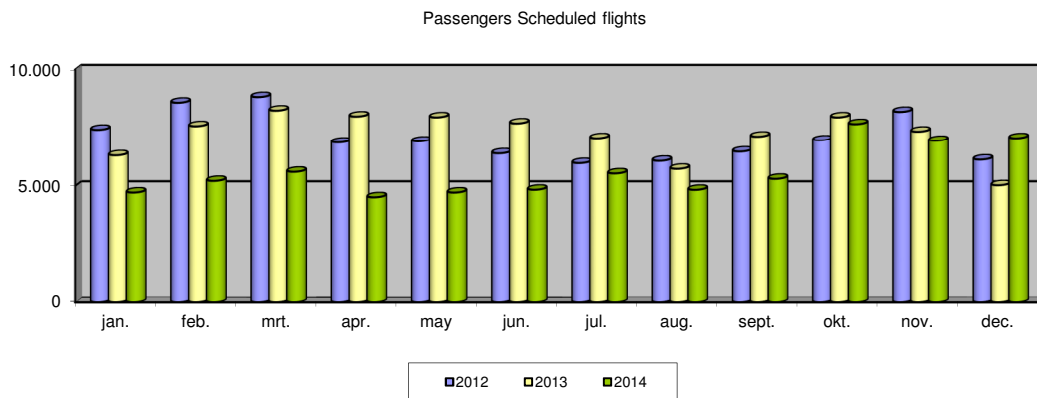


Monthly per type 2012-2014

Scheduled flights

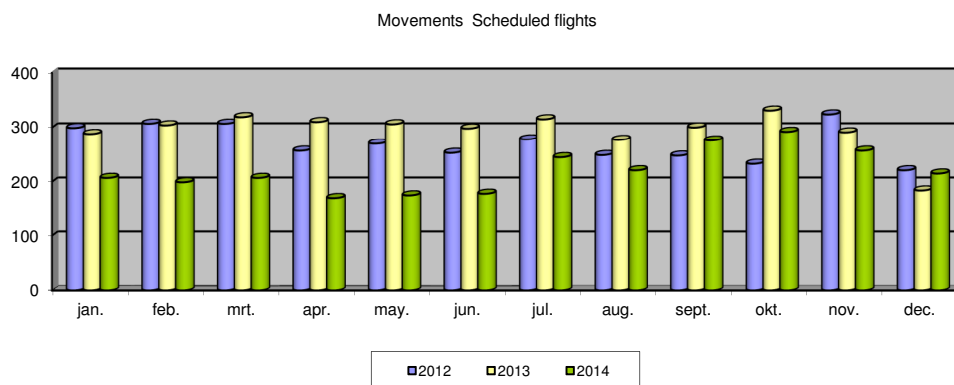
Passengers

	jan.	feb.	mrt.	apr.	may.	jun.	jul.	aug.	sept.	okt.	nov.	dec.	Total
2012	7.420	8.583	8.824	6.870	6.914	6.395	5.978	6.076	6.472	6.962	8.187	6.127	84.808
2013	7.420	8.583	8.824	6.870	6.914	6.395	5.978	6.076	6.472	6.962	8.187	6.127	84.808
2014	4.715	5.213	5.604	4.510	4.714	4.835	5.534	4.831	5.302	7.662	6.942	7.057	66.919



Movements

	jan.	feb.	mrt.	apr.	may.	jun.	jul.	aug.	sept.	okt.	nov.	dec.	Total
2012	299	307	307	257	270	253	278	249	248	233	324	221	3.246
2013	288	304	319	310	306	298	315	277	300	331	291	184	3.523
2014	207	199	207	170	175	178	245	221	276	292	257	215	2.642

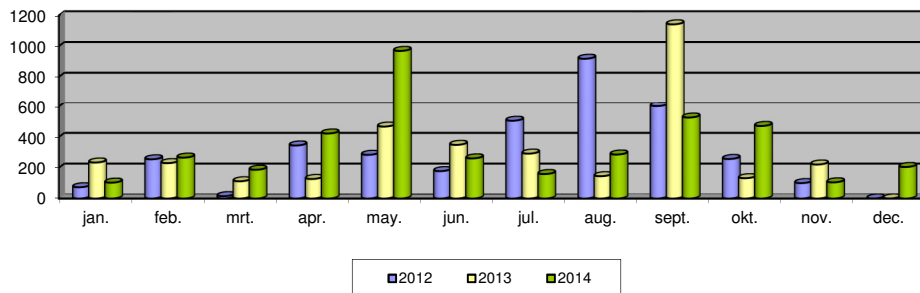


Charter flights

Passengers

	jan.	feb.	mrt.	apr.	may.	jun.	jul.	aug.	sept.	okt.	nov.	dec.	Total
2012	73	255	15	345	284	178	506	918	602	257	100	0	3.533
2013	234	230	112	127	468	349	292	145	1142	132	221	0	3.452
2014	103	266	187	423	969	261	159	286	527	472	105	205	3.963

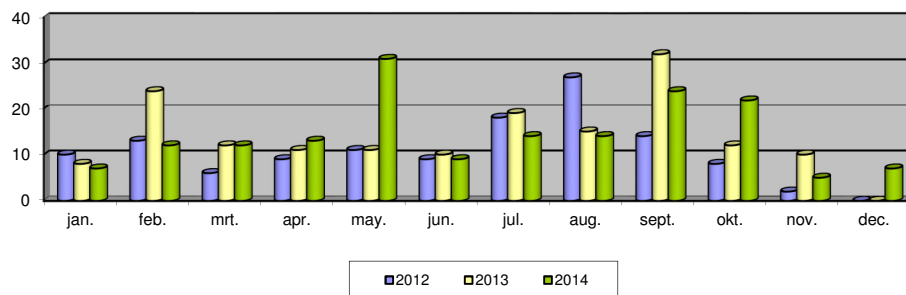
Passengers Charter flights



Movements

	jan.	feb.	mrt.	apr.	may.	jun.	jul.	aug.	sept.	okt.	nov.	dec.	Total
2012	10	13	6	9	11	9	18	27	14	8	2	0	127
2013	8	24	12	11	11	10	19	15	32	12	10	0	164
2014	7	12	12	13	31	9	14	14	24	22	5	7	170

Movements Charter flights

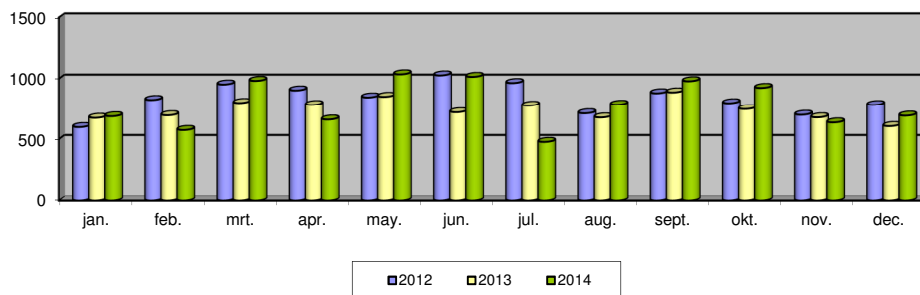


Ad hoc flights + 3 ton

Passengers

	jan.	feb.	mrt.	apr.	may.	jun.	jul.	aug.	sept.	okt.	nov.	dec.	Total
2012	599	825	952	903	846	1.027	964	712	880	798	700	783	9.989
2013	675	696	800	783	851	721	777	678	887	748	679	607	8.902
2014	688	575	982	661	1.036	1.015	477	785	979	924	637	693	9.452

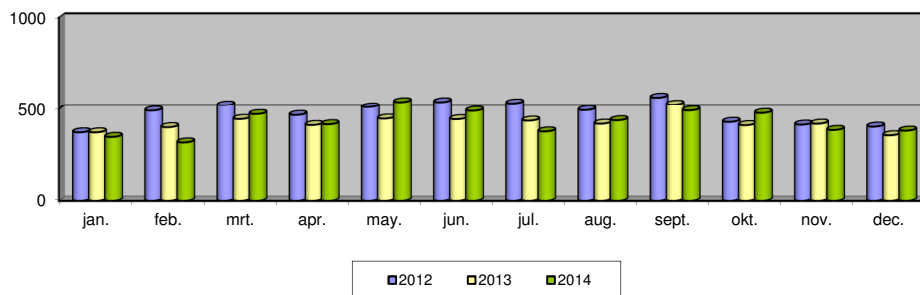
Passengers ad hoc flights+3 ton



Movements

	jan.	feb.	mrt.	apr.	may.	jun.	jul.	aug.	sept.	okt.	nov.	dec.	Total
2012	371	490	521	466	510	539	532	493	564	428	413	402	5.729
2013	371	399	444	411	446	443	435	418	525	410	418	355	5.075
2014	346	316	471	415	539	489	376	437	491	477	384	380	5.121

Movements ad hoc flights+3 ton

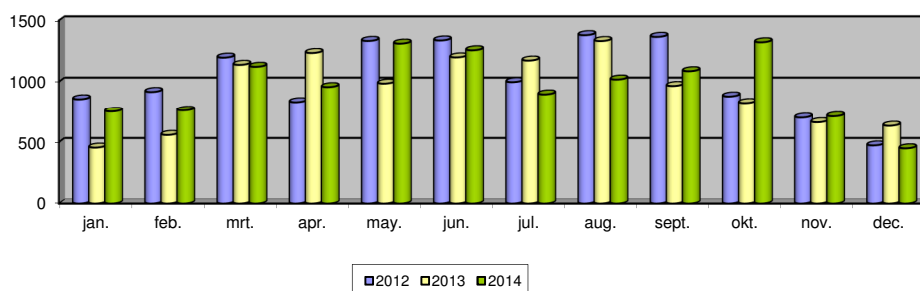


Ad hoc flights – 3 ton

Passengers

	jan.	feb.	mrt.	apr.	may.	jun.	jul.	aug.	sept.	okt.	nov.	dec.	Total
2012	856	916	1.197	832	1.333	1.337	997	1.380	1.366	879	701	473	12.267
2013	455	559	1.138	1.235	985	1.199	1.173	1.332	965	825	663	634	11.163
2014	752	761	1.122	956	1.311	1.257	896	1.018	1.086	1.322	712	449	11.642

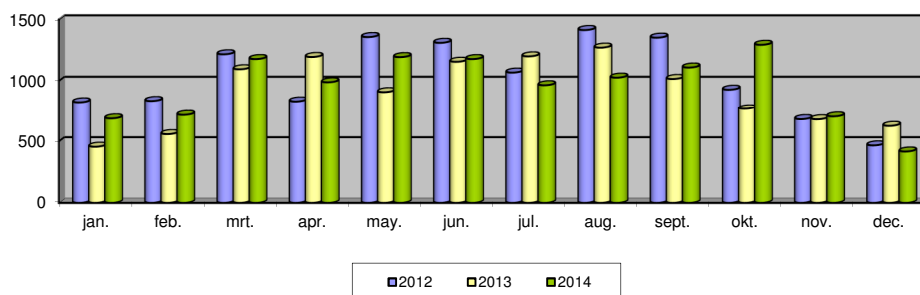
Passengers ad hoc flights -3 ton



Movements

	jan.	feb.	mrt.	apr.	may.	jun.	jul.	aug.	sept.	okt.	nov.	dec.	Total
2012	825	836	1.217	832	1.357	1.310	1.068	1.414	1.352	928	681	467	12.287
2013	456	559	1.095	1.195	908	1.156	1.200	1.271	1.016	767	680	626	10.929
2014	687	716	1.178	989	1.194	1.178	965	1.027	1.109	1.294	703	417	11.427

Movements ad hoc flights -3 ton

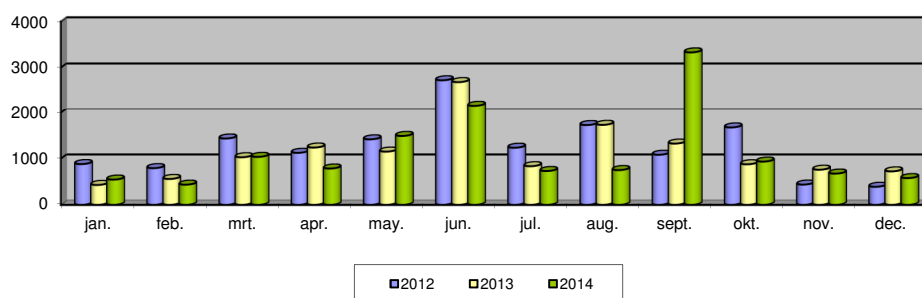


Local flights

Passengers

	jan.	feb.	mrt.	apr.	may.	jun.	jul.	aug.	sept.	okt.	nov.	dec.	Total
2012	882	794	1.436	1.126	1.418	2.726	1.236	1.728	1.084	1.676	438	390	14.934
2013	430	560	1.030	1.240	1.152	2.686	836	1.732	1.326	878	760	724	13.354
2014	546	436	1.038	786	1.492	2.171	732	752	3.330	936	676	578	13.473

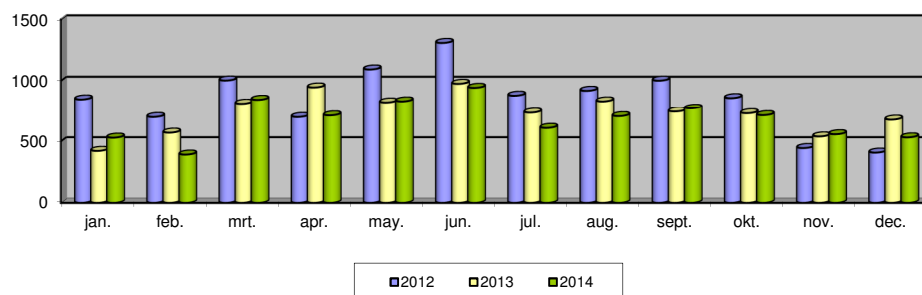
Passengers Local flights



Movements

	jan.	feb.	mrt.	apr.	may.	jun.	jul.	aug.	sept.	okt.	nov.	dec.	Total
2012	848	699	1.003	699	1.093	1.309	879	919	1.002	859	445	408	10.163
2013	422	571	813	946	823	976	735	832	744	730	540	677	8.809
2014	530	392	845	712	832	943	610	706	771	714	558	532	8.145

Movements Local flights

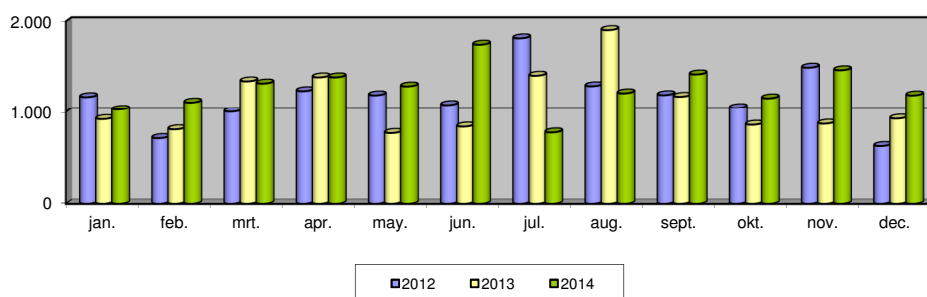


Training flights

Passengers

	jan.	feb.	mrt.	apr.	may.	jun.	jul.	aug.	sept.	okt.	nov.	dec.	Total
2012	1.168	712	1.002	1.234	1.188	1.080	1.814	1.288	1.190	1.046	1.492	626	13.840
2013	920	808	1.342	1.386	768	838	1.404	1.904	1.172	858	870	926	13.196
2014	1.026	1.108	1.318	1.386	1.286	1.744	774	1.210	1.418	1.154	1.464	1.187	15.075

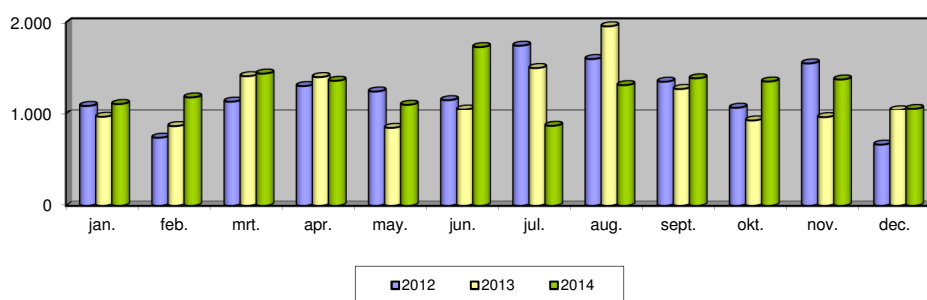
Passengers Training flights



Movements

	jan.	feb.	mrt.	apr.	may.	jun.	jul.	aug.	sept.	okt.	nov.	dec.	Total
2012	1.095	737	1.142	1.311	1.252	1.158	1.748	1.604	1.358	1.076	1.556	662	14.699
2013	964	863	1.418	4.408	844	1.056	1.506	1.958	1.279	924	960	1.048	14.228
2014	1.116	1.188	1.446	1.368	1.108	1.733	866	1.321	1.396	1.360	1.382	1.063	15.347

Movements Training flights



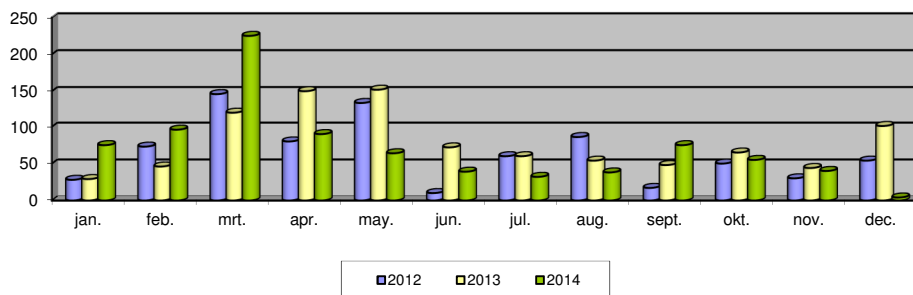
Other flights

(= cargo flights, military flights, photo flights, diversions)

Passengers

	jan.	feb.	mrt.	apr.	may.	jun.	jul.	aug.	sept.	okt.	nov.	dec.	Total
2012	28	73	146	80	134	10	60	86	17	50	30	54	768
2013	29	46	119	150	152	72	60	54	48	65	44	101	940
2014	75	96	225	90	64	39	32	38	75	55	40	4	833

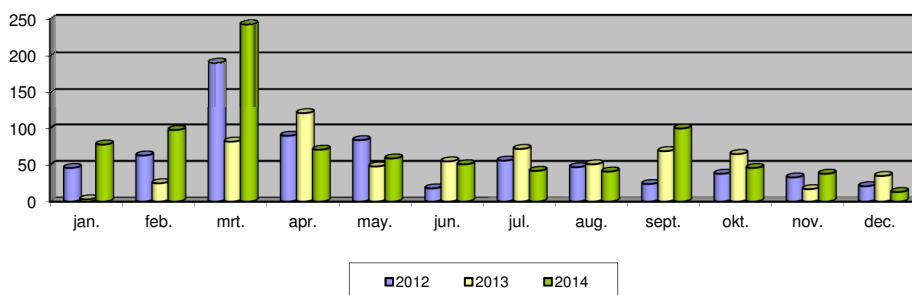
Passengers Other flights



Movements

	jan.	feb.	mrt.	apr.	may.	jun.	jul.	aug.	sept.	okt.	nov.	dec.	Total
2012	46	63	191	90	84	18	56	47	24	38	33	21	711
2013	3	25	82	121	48	55	72	51	69	65	17	35	643
2014	78	98	243	71	59	51	42	41	100	46	38	13	880

Movements Other flights



Glossary

1. SCHEDULED FLIGHTS

Regular commercial flights.

2. CHARTER FLIGHTS

Flights and accommodation, or flights only, reserved to the members of an association travelling group.

3. AD HOC FLIGHTS (–3 TON AND +3 TON)

Transfer by aircraft for business purposes, or a flight performed by an aircraft with a maximum seat capacity of 7 passengers, for which the planned destination includes one or more landings outside the airport of departure.

4. LOCAL FLIGHTS

- 4.1. Transfer by aircraft for which the airport of departure is the planned destination, so that the flight includes no landings outside the airport of departure.
- 4.2. Maiden flights.

5. TRAINING FLIGHTS

- 5.1. Flight performed by a student-pilot to become a license.
- 5.2. Flight performed
 - for purpose of the issue, renewal or restitution of a certificate of airworthiness;
 - to control ground installations.
- 5.3. Flight performed by an aircraft for crew training.

6. OTHER FLIGHTS

- 6.1. Diversions.

- 6.2. Delivery flight: flight to deliver an aircraft.
- 6.3. Empty flight to bring an aircraft in position.
- 6.4. Military flights.
- 6.5. Flights for exclusive transport of heads of state or members of government in the exercise of their duty.

