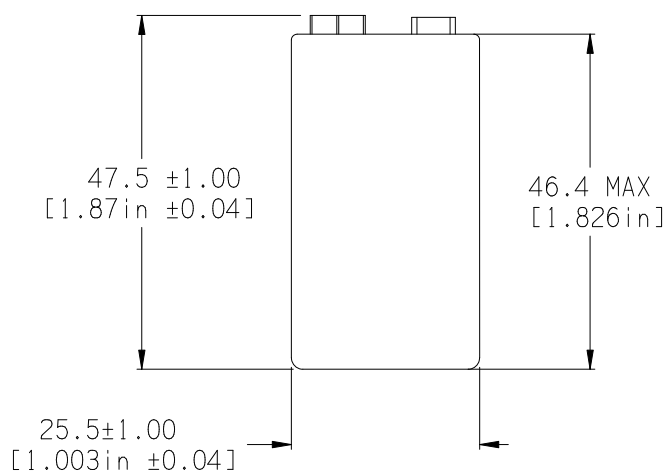
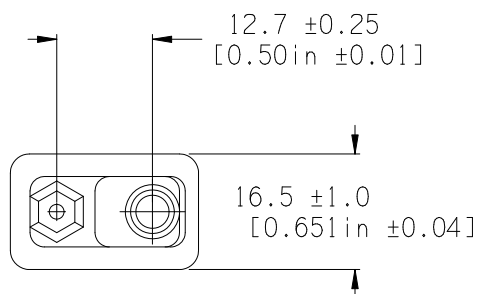


DATE: 08/21/15

BATTERY SPECIFICATION

P/N 9V-CARBON ZINC



TYPICAL SPECIFICATIONS

ELECTROCHEMICAL SYSTEM: CARBON ZINC

NOMINAL VOLTAGE: 9.0

MAXIMUM OFF-LOAD VOLTAGE: 10.8

RATED CAPACITY:

AVERAGE WEIGHT: 1.3 oz (37.0 g)

OPERATING TEMP. RANGE: -20°C TO 54°C (-4°F TO 130°F)

ANSI DESIGNATION: 1604 OR 1604C OR 1604D OR 1604CD

TYPICAL USE	LOAD (OHMS)	DAILY PERIOD	END POINT V	MINIMUM AVERAGE DURATION
SMOKE DETECTOR	43K 620 PULSE	BACKGROUND 1 sec/hr, 24 hr/d	7.5	30 days

TYPICAL MPD HOLDER NO. BA9VPC, BH9VPC, BC9VPC, BH9VW

TYPICAL MPD SNAPS NO. BS6I OR BS6I-MC

SEE MANUFACTURER'S SPECIFICATION SHEET FOR FURTHER INFORMATION.

AWI	DURACELL	EVEREADY	IEC	KODAK	MAXELL	NEDA	PANASONIC	RAYOVAC	SANYO	TOSHIBA	VARTA	OTHER
		1222	6F22			1604D	006PN	D1604		6F22U		