

www.nidderdaleaonb.org.uk

FREE
Please take one



Nidderdale
Area of Outstanding Natural Beauty

2014 Visit NIDDERDALE

Area of Outstanding Natural Beauty

Follow us on



Your AONB



Enjoy



Wildlife & Habitats



Get Involved



Living & Working



Heritage



Includes
a 12 page
pull-out guide to
cycling in the AONB
to celebrate the Tour
de France Grand
Départ

A protected landscape at the heart
of the Yorkshire Dales!

DISCOVER NIDDERDALE • PLACES TO VISIT AND THINGS TO DO • EVENTS AND SHOWS
DELICIOUS LOCAL FOOD • CYCLE NIDDERDALE • WALKING • ABOUT AONBS

Brimham Rocks © Paul Harris Photography

Landscapes
for life
.org.uk

{ NIDDERDALE
One of the
AONB Family



Traditional Nidderdale barn © PHP



Heather moorland © PHP



Kayaking on Scar House Reservoir © PHP



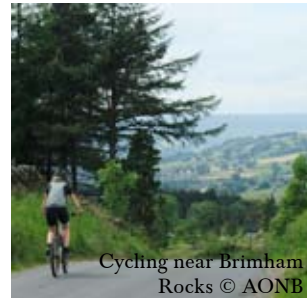
Brimham Rocks © PHP



Trekking with Nidderdale Llamas © PHP



Cows under a rainbow © PHP



Cycling near Brimham Rocks © AONB



Studfold Trail hay meadow © PHP



Rosebud Preserves © PHP



Nidderdale © PHP



Black Sheep Beer © PHP



Local farmer © PHP



Toft Gate Lime Kiln Greenhow © PHP

Contents

4	About AONBs	20	The East
5	Getting here	23	A special place for wildlife
6	Find out more	24	Mashamshire
7	Map guide to main attractions	27	Nidderdale AONB and the First World War
8	Upper Nidderdale	28	Moor than meets the eye
11	Water, water everywhere!	30	Walk Nidderdale
12	Lower Nidderdale	32	Events and shows
16	The Southern AONB & Washburn Valley		
19	A taste of Nidderdale		

Also includes a 12 page pull-out guide to cycling in the AONB

Welcome to Nidderdale Area of Outstanding Natural Beauty – one of Britain’s finest landscapes!

Nidderdale Area of Outstanding Natural Beauty (AONB) is a dramatic landscape of contrasts which has been shaped over thousands of years by the people who have lived and worked here. Whichever part of the AONB you choose to visit you are sure to be amazed at its beauty.

Discover the wonderful Nidderdale Valley - from the remote heather moorland landscape of upper Nidderdale, dotted with beautiful reservoirs and charming stone built villages, to the river valley of lower Nidderdale with its lush green pastures and rolling farmland crisscrossed by dry stone walls. The scattered remains of former mine workings and other rural industries throughout the Dale remind us of the area’s rich industrial heritage.

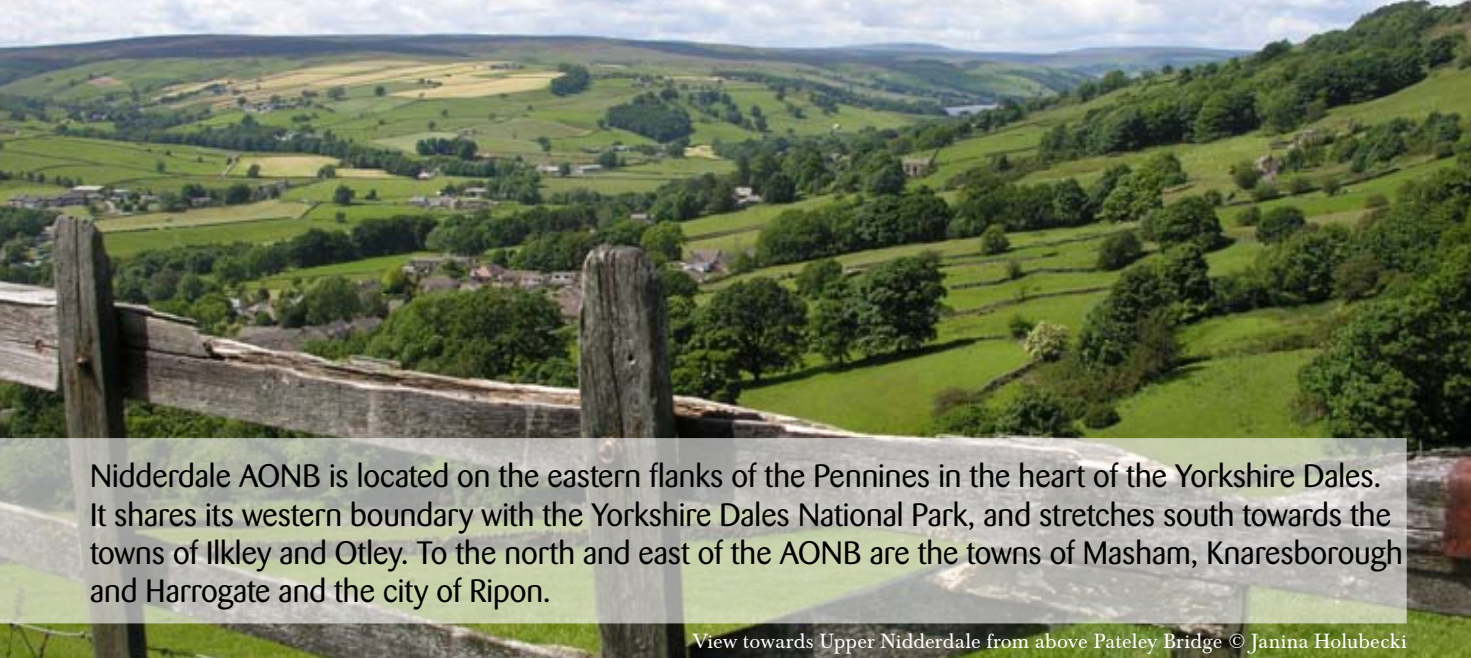
Explore Mashamshire and the monastic heritage of the eastern part of the AONB with the magnificent World Heritage Site of Fountains Abbey & Studley Royal,

and the stunning historic parks & gardens of Jervaulx Abbey and Hackfall. Delicious local produce can be found in abundance with ice cream, preserves and beer being just a few of the items on the menu.

Enjoy the beautiful Washburn Valley in the south of the AONB, known to some as Yorkshire’s Lake District. This area is a haven for wildlife with pasture land, woodland, reservoirs, rivers and moorland, and offers plenty of opportunities for walking, fishing, birdwatching and cycling.

Read on for more information about the AONB and ideas for things to see and do, places to visit and events to take part in. Whether you are visiting for the first time or returning to a much-loved place Nidderdale AONB is a wonderful destination well worth taking the time to discover, explore and enjoy!

About AONBs



View towards Upper Nidderdale from above Pateley Bridge © Janina Holubecki

Nidderdale AONB is located on the eastern flanks of the Pennines in the heart of the Yorkshire Dales. It shares its western boundary with the Yorkshire Dales National Park, and stretches south towards the towns of Ilkley and Otley. To the north and east of the AONB are the towns of Masham, Knaresborough and Harrogate and the city of Ripon.

What is an AONB?

“An Area of Outstanding Natural Beauty (AONB) is exactly what it says it is: an outstanding landscape whose distinctive character and natural beauty are so precious that it is in the nation’s interest to safeguard them.”

www.landscapesforlife.org.uk

The creation of AONBs

AONBs were created alongside National Parks as a result of the ‘National Parks and Access to the Countryside Act 1949’. This Act also gave powers to strengthen a Public Rights of Way framework, including the creation of long distance routes.

Other AONBs

There is a family of 46 AONBs in the United Kingdom - 33 in England, 4 in Wales, 1 that straddles the England/Wales border and 8 in Northern Ireland – and they make up 18% of our finest countryside.

Visit www.landscapesforlife.org.uk for more information and a full list of all AONBs.






Helping to look after Nidderdale AONB for generations to come

Joining the Friends of Nidderdale AONB is your opportunity ‘to give something back’ and ensure this beautiful area remains special today and for generations to come.

The Friends is a charity set up to support the aims of the AONB, and it is a way for you to directly support conservation work and to engage with our local environment, communities, history and heritage.

If you would like to find out more about the Friends of Nidderdale AONB please visit www.nidderdaleaonb.org.uk/Pages/Friends-of-Nidderdale-AONB

Get in touch:
 Friends of Nidderdale AONB, The Old Workhouse, King Street, Pateley Bridge, Harrogate, HG3 5LE
 T: 01423 712950 E: nidderdaleaonb@harrogate.gov.uk
 @FriendsNiddAONB



Getting here

Located in the heart of the Yorkshire Dales in North Yorkshire, close to Harrogate, Ripon, York and Leeds and bordering the Yorkshire Dales National Park, Nidderdale AONB is an ideal central point for exploring this beautiful part of the country. Much of the AONB is remote and isolated, and this is part of its beauty, but there are many ways to get here.

By bus: the Transdev Harrogate & District number 24 service runs regularly from Harrogate into the AONB through Lower Nidderdale to Pateley Bridge (www.harrogatebus.co.uk). Harrogate is easily accessible by bus from surrounding towns and cities such as York, Leeds, Ripon, Knaresborough, Wetherby, Bradford, Ilkley and Otley. Leeds, Harrogate, York, Ripon and Thirsk are also served by National Express coaches.

By train: the nearest train station is Harrogate with regular services from Leeds and York.

By plane: the nearest airport is Leeds Bradford International Airport and a regular bus service (737) runs from the airport to Harrogate.

By road: the AONB is easily accessible from the A1 (M) and the A61 to the east and the A65, A59, M65 and M62 to the south. The AONB is a 10 minute drive from Harrogate, 20 minutes from Skipton, 30 minutes from Leeds and only 45 minutes from the City of York.

Explore the AONB by bus

Once you have arrived in the AONB why not enjoy its spectacular scenery whilst travelling by bus? www.dalesbus.org has lots of information about local services but here are a few suggestions to get you started:

Walk part of the Nidderdale Way (see p31) from Pateley Bridge to Upper Nidderdale and enjoy some delicious local produce en route before catching the 825 Nidderdale Rambler service back.



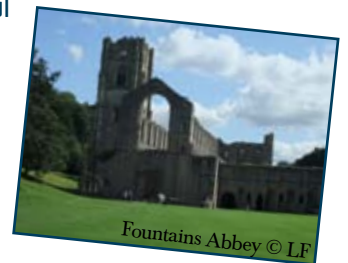
Walkers above Gouthwaite © JH



Ilkley © AONB

Explore the towns of Ilkley and Otley (see p16) using the number 24 bus from Pateley Bridge (or a number of stops in Lower Nidderdale) to Harrogate and then the X52 service from Harrogate.

Visit some of the beautiful villages in the East of the AONB (see p20-22) and the stunning World Heritage Site of Fountains Abbey & Studley Royal using the 138 and 139 Ripon Roweller services.



Fountains Abbey © LF

We look forward to seeing you soon!

For more information or help with planning your journey visit www.traveline.org.uk

Find out more

If you need more information whilst visiting the area why not visit one of the many Tourist Information Centres. The friendly and knowledgeable staff are very willing to help and can provide a wide range of information such as things to do, places to go and details of how to get around.

Otley Library & TIC
Nelson Street, Otley, LS21 1EZ

T: 01943 466572
E: otleytic@leeds.gov.uk
W: www.visitotley.co.uk

Opening Times:
Monday 10am-7pm, Tuesday to Friday 9am-7pm, Saturday 9am-4pm, Sunday 11am-3pm

Harrogate TIC
Royal Baths, Crescent Road, Harrogate, HG1 2RR

T: 01423 537300
E: tic@harrogate.gov.uk
W: www.visitharrogate.co.uk
Twitter: @harrogatic

Opening Times:
1 April to 31 October: Monday to Saturday 9am-5.30pm, Sunday 10am-1pm.
1 November to 31 March: Monday to Friday 9.30am-5pm, Saturday 9.30am-4pm, Sunday closed.

Ripon TIC
Town Hall, Market Place South, Ripon, HG4 1DD

T: 01765 604625
E: ripontic@harrogate.gov.uk
W: www.visitharrogate.co.uk

Opening Times:
1 April to 31 October: Monday to Saturday 10am-5pm, Sunday 10am-1pm.
1 November to 31 March: Thursday and Saturday 10am-4pm. Closed 1pm-1.30pm for lunch.

Pateley Bridge TIC
18 High Street, Pateley Bridge, HG3 5AW

T: 01423 711147
E: pbtic@harrogate.gov.uk
W: www.visitharrogate.co.uk

Opening Times:
1 April to 31 October: Monday to Saturday 10am-5pm, Sunday 10am-1pm.
1 November to 31 March: Friday and Saturday 10am-4pm. Closed 1pm-1.30pm for lunch.

Knaresborough TIC
9 Castle Courtyard, Knaresborough, HG5 8AE

T: 01423 866886
E: kntic@harrogate.gov.uk
W: www.visitharrogate.co.uk

Opening Times:
1 April to 31 October: Monday to Saturday 10am-5pm, Sunday 10am-1pm.
1 November to 31 March: Wednesday and Saturday 10am-4pm. Closed 1pm-1.30pm for lunch.



Ilkley TIC
Station Road, Ilkley, LS29 8HB

T: 01943 602319
E: ilkley.vic@bradford.gov.uk
W: www.visitilkley.com

Opening Times:
1 April – 30 September: Monday to Saturday 9.30am-4.30pm (Tues 10am-4.30pm), Sunday closed
1 October – 31 March: Monday to Saturday 10am-4pm (Tues 10.30am-4pm), Sunday closed
Bank Holidays: 10am – 4pm

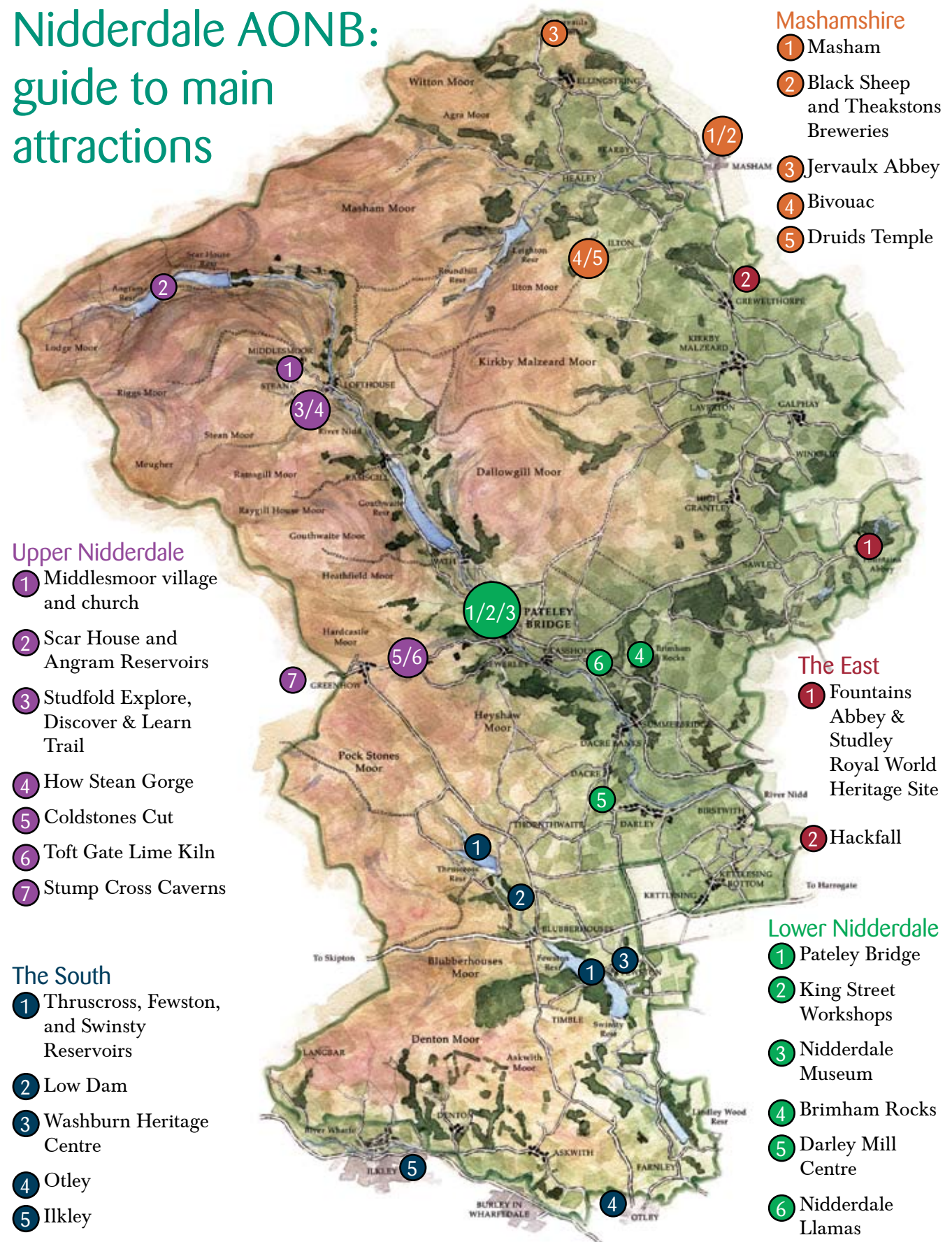
Mashamshire Community Office & Library, 7 Little Market Place, Masham, HG4 4DY

T: 01765 680200
E: info@visitmasham.com
W: www.visitmasham.com
Twitter: @visitmasham

Opening Times:
Monday - Saturday 10am-3pm
Sunday closed (except during August – open 11am-1pm).
Bank Holidays 10am-3pm.

For more help with planning your visit to the AONB see www.nidderdaleaonb.org.uk
For information on exploring the wider Harrogate area visit www.visitharrogate.co.uk

Nidderdale AONB: guide to main attractions



- Mashamshire**
- 1 Masham
 - 2 Black Sheep and Theakstons Breweries
 - 3 Jervaulx Abbey
 - 4 Bivouac
 - 5 Druids Temple

Upper Nidderdale

- 1 Middlesmoor village and church
- 2 Scar House and Angram Reservoirs
- 3 Studfold Explore, Discover & Learn Trail
- 4 How Stean Gorge
- 5 Coldstones Cut
- 6 Toft Gate Lime Kiln
- 7 Stump Cross Caverns

The South

- 1 Thruscross, Fewston, and Swinsty Reservoirs
- 2 Low Dam
- 3 Washburn Heritage Centre
- 4 Otley
- 5 Ilkley

The East

- 1 Fountains Abbey & Studley Royal World Heritage Site
- 2 Hackfall

Lower Nidderdale

- 1 Pateley Bridge
- 2 King Street Workshops
- 3 Nidderdale Museum
- 4 Brimham Rocks
- 5 Darley Mill Centre
- 6 Nidderdale Llamas

Wath

A small, picturesque and unspoilt hamlet with some interesting historic buildings. The name Wath probably comes from the Scandinavian meaning "ford", referring to the crossing over the River Nidd at the position of the present bridge.

Greenhow

Located high above Pateley Bridge at around 1300ft above sea level, Greenhow village sits on the shared boundary of Nidderdale AONB and the Yorkshire Dales National Park. It has extensive remains of the leadmining, quarrying and lime burning industries and is home to Coldstones Quarry which still operates today.

Toft Gate Lime Kiln

the remains of this Lime Kiln, which was built in the 1860s, can be explored via a short trail with a series of information boards. Access is via a small car park on the outskirts of the village.



Coldstones Cut: this dramatic sculpture was designed to illustrate the connection between the landscape and the quarry. It also acts as



a viewing platform offering superb long distance views over the surrounding landscape and down into the working quarry. The Cut is signposted from Toft Gate car

park from where it is a 500 metre, fairly steep walk. www.thecoldstonescut.org

Stump Cross Caverns

one of Britain's premier show caves, discovered in 1860 by miners who were looking for lead seams. The

extensive cave system is filled with complex and colourful stalactite and stalagmite formations dating back up to 200,000 years. There is also a lecture theatre showing a 20 minute film about the cave and the surrounding area, a tearoom serving a variety of homemade cakes and meals, and a gift shop. **Open:** February half term to 30th November – daily 10am-5.30pm (last admission 4.30pm). December to February half term - weekends and school holidays only. **Prices:** Adults £7, child (4-13) £4.50, under 4's free.

T: 01756 752780. www.stumpcrosscaverns.co.uk



Don't leave Upper Nidderdale until you've:

- Walked around Scar, Angram and Gouthwaite Reservoirs and counted how many different species of bird you can see.
- Admired the spectacular view from Middlesmoor churchyard.
- Visited How Stean Gorge and scrambled along the gorge, traversed narrow bridges and pathways to explore Tom Taylor's Cave, and had a go at the Via Ferrata.
- Found the clues in the secret boxes or built dens along the Studfold Explore, Discover & Learn Trail.
- Been underground at Stump Cross Caverns.
- Climbed the hill to see the amazing view from Coldstones Cut and come down to explore the old lime working industry.



Water, water everywhere!



There are 12 reservoirs in the AONB, many of which were built to supply water to the nearby cities of Leeds and Bradford as they grew during the industrial revolution. They are a very important part of the AONB's heritage and landscape as well as providing a home to many plants and animals. They are also fantastic places for walking, cycling, fishing and bird watching and are well worth exploring! Here are a few of our favourites:

Hidden history

Scar House Reservoir, Upper Nidderdale

Work on Scar House Reservoir began on 5 October 1921 and took 15 years to complete. Developing such a vast scheme changed the landscape of Upper Nidderdale for ever. Less than 100 years ago the site was a noisy and dangerous work site buzzing with activity. Huge amounts of manpower had to be drafted in to build the reservoir and as a result a whole village was created.

Now Scar House is characterised by its peace and solitude. You can still see the remains of where the village once stood and the landscape is scarred by the old quarries and railway lines. With a bit of imagination you can picture the thriving community that once lived there.

Thruscross Reservoir, Washburn Valley

Thruscross Reservoir is one of the most intriguing historically. Before the dam wall was built across the narrow steep-sided valley in 1966 almost all of the once thriving village of West End had to be demolished before being flooded.

The Holy Trinity Church held its last service by candlelight in October 1965 before it was dismantled – the altar, pulpit, font and stained glass windows were incorporated into a new church built a few hundred yards up the hill. Many bodies were

exhumed and moved along with all the headstones to a new cemetery approximately a mile away. Much interest was created during the dry summers of 1989 and 1990, when the water level fell so much that the foundations of the village re-appeared.

Walking, fishing and relaxing

Swinsty and Fewston Reservoirs, in the Washburn Valley, offer exceptional trout fishing. Tickets are available from the fishing office in Swinsty Moor car park.

The majority of the reservoirs have well serviced footpaths, from easy trails to more challenging routes, as well good parking facilities and toilets.

More information about all of the reservoirs and details of walking routes and recreational facilities can be found online at www.yorkshirewater.com

Reservoirs for wildlife

Although built for supplying water, many of the reservoirs have become havens for wildlife. In particular Gouthwaite Reservoir, which is also a nature reserve and Site of Special Scientific Interest, is popular with birdwatchers.



Darley

A large village in central Nidderdale which was part of Knaresborough Forest in the 12th century. The name Darley is thought to mean ‘deer glade’ and the village is home to a number of listed buildings with an interesting history.

Darley Mill Centre:

a Grade II listed 17th century corn mill that sits on the banks of the River Nidd and operates as a retail outlet selling a wide range of home furnishings including linens, homeware and gifts. The building retains many original features including its huge water wheel, which has been fully restored to working order. There is also a children’s play area, restaurant and free onsite parking. The ground and first floor are wheelchair accessible. **Open:** 9.30am-5.30pm Mon to Sat and 11am-5pm on Sunday. Closed Christmas Day and Easter Sunday. **T:** 01423 780857. www.darleymill.com



Summerbridge

One of the larger villages in the AONB with a range of local amenities.

Brimham Rocks:

owned by the National Trust, this amazing collection of weird and wonderful rock formations is scattered over 50 acres of moorland and can be explored via a labyrinth of paths. Brimham Rocks enjoy spectacular views over the surrounding countryside and provide a great family day out. Facilities include a visitor centre, shop and a refreshment kiosk. Some paths are suitable for wheelchair users. **Open:** Rocks - daily (8am to dusk) all year round. Visitor Centre & Refreshment Kiosk - daily 11am to 5pm from 24th May to 5th October. Weekends, bank holidays and local school holidays from October to May. **Prices:** Admission is free but there is a charge for car parking. **T:** 01423 780688. www.nationaltrust.org.uk



Birchfield Family Dairies: this family run farm is home to award winning real jersey dairy ice cream and farmhouse butters made on the premises. There is a farm shop selling up to 32 flavours of ice cream and a variety of other dairy products, as well as a maize maze, which is open in the summer. **T:** 01423 781792. www.birchfieldicecream.co.uk



Glasshouses

A small village just one mile from Pateley Bridge, which was once the centre of a thriving textile industry. Glasshouses is now a conservation area and it is thought that the name may come from the old English ‘glass hus’, meaning the house where glass was made.

Dacre Banks

@ The Studio, Dacre Banks:

a gallery which showcases work from artists based in Yorkshire, and the working Studio of Artist Frances Payne. @ The Studio has a selection of contemporary arts and crafts, gifts and handmade cards and runs a variety of craft workshops. **Open:** Wed to Sat 10am-4pm or by arrangement on other days. **T:** 07736 071903. **Facebook:** BanksHouseStudio



As seen on ITV - ‘The Dales’
Llama Trekking in the Yorkshire Dales!
AN UNFORGETTABLE EXPERIENCE

Relax in stunning scenery accompanied by our amazing friendly animals

© PHP

NIDDERDALE LLAMAS

Picnic treks | Hen parties | Family experiences | Private parties welcome

PRE-BOOKING ESSENTIAL

web/email/telephone

Suzanne Benson
Nidderdale Llamas
Kiln Farm, Wilsill,
Pateley Bridge, Harrogate
Tel. 01423 711052
www.nidderdalellamas.org
info@nidderdalellamas.org



WILDLIFE Watch

If you care about nature and the environment and want to explore your local wildlife – this is the club for YOU!

We have an amazing time in the fresh air doing things like pond dipping, den building and treasure hunts. When we’re not doing practical activities we do loads of fun and messy crafts and great games. You can work towards your ‘Hedgehog Award’ and you’ll be awarded a very cool certificate. Come and give it a try. We look forward to seeing you.....

- For children aged 5 to 11.
- Events held monthly from 10am-12pm
- £1 per child per session - includes drink & biscuit
- No need to book –just turn up!
- Children must be accompanied by an adult

Full details at www.nidderdaleaonb.org.uk. **T:** 01423 712950

I exploring

Brimham Rocks

Discover nature's sculpture park, open to explore all year round. See website for details, find us near Harrogate, HG3 4DW.

Call 01423 780688 for details nationaltrust.org.uk/brimhamrocks

National Trust

Warren Forest Park

NIDDERDALE



AN EXCLUSIVE FIVE STAR PARK FOR
HOLIDAY HOME OWNERS ONLY
NEW AND USED CARAVANS FOR SALE

PATELEY BRIDGE 5 MILES
HARROGATE 9 MILES

BROCHURE TEL: 01765 620 683
www.warrenforestpark.co.uk

'A PARK FOR THOSE WITHOUT FAMILY TIES'

Don't leave Lower Nidderdale until you've:

- Understood Nidderdale's story at Nidderdale Museum
- Bought glass, jewellery or artwork from the workshops at the King Street Studios at the Old Workhouse
- Explored Brimham Rocks
- Eaten a pork pie from Kendalls Farm Butchers or H.Weatherhead & Sons
- Trekking with a llama at Nidderdale Llamas
- Bought some sweets from England's oldest sweet shop
- Tried all of the ice-creams available in Nidderdale

Lower Nidderdale - Lower Nidderdale - Lower Nidderdale - Lower Nidderdale - Lower Nidderdale - Lower Nidderdale - Lower Nidderdale - Lower Nidderdale - Lower Nidderdale - Lower Nidderdale - Lower Nidderdale - Lower Nidderdale - Lower Nidderdale - Lower Nidderdale - Lower Nidderdale

Lower Nidderdale - Lower Nidderdale - Lower Nidderdale - Lower Nidderdale - Lower Nidderdale - Lower Nidderdale - Lower Nidderdale - Lower Nidderdale - Lower Nidderdale - Lower Nidderdale - Lower Nidderdale - Lower Nidderdale - Lower Nidderdale - Lower Nidderdale - Lower Nidderdale

The Southern AONB & Washburn Valley

A mix of rolling pasture with woodland, high moorlands, steep sided valleys and reservoirs. Explore the Washburn Valley, known to some as Yorkshire's Lake District, with its charming villages and hamlets, and the traditional towns of Ilkley and Otley, just to the south of the AONB, with their vast range of shops, restaurants and attractions. The Valley encompasses a wide range of habitats including pasture land, woodland, reservoirs, rivers and moorland. With its rich heritage, vast range of flora and fauna, and various opportunities for recreation, it is a truly delightful area to explore.

Thruscross Reservoir © Eric Moss

Ilkley

A Victorian spa town on the edge of the AONB with a wonderful range of shops, eateries and attractions. www.visitilkley.com



Cow & Calf Rocks: located high on Ilkley Moor these are large rock formations, which offer spectacular views of Ilkley and beyond and provide a great place to climb.

Manor House Art Gallery & Museum: located in one of Ilkley's oldest buildings, this museum and art gallery gives visitors a glimpse into Ilkley's past and its development as a Victorian spa town. Open: Tues 1pm-5pm, Wed to Sat 11am-5pm, Sun 1pm-4pm. Closed Mondays (except Bank Holidays), Christmas Day, Boxing Day & Good Friday). Price: Free. T: 01943 600066. www.bradfordmuseums.org/venues/manorhouse

Otley

A traditional Yorkshire market town located on the banks of the River Wharfe. It has a good range of shops, eateries and attractions and is the host of the country's oldest agricultural show. www.visitotley.co.uk



Otley Courthouse: an arts and resource centre located in a redundant 19th century magistrates' court. The centre hosts a varied programme of events, exhibitions and activities and is open seven days a week. There is also a café that is open Mon to Sat 10am to 3pm. www.otleycourthouse.org.uk



Otley is a 'Walkers are Welcome' town.

Otley Market: the town has an outdoor market three times a week on a Tuesday, Friday and Saturday. It also has a farmers' market on the last Sunday of each month from 9am-1pm (except December when it is held the last Sunday before Christmas).

Blubberhouses

A small hamlet on the edge of Fewston Reservoir. A perfect starting point for exploring the wonderful Washburn Valley.

Reservoirs: during the 18th and 19th centuries, the cities of Leeds and Bradford grew rapidly and demand for water was high. As a result four reservoirs were built in the Washburn Valley between 1869 and 1966. The creation of Lindley Wood, Swinsty, Fewston and Thruscross reservoirs changed the landscape of the Washburn Valley forever as villages, mills and land were all lost to the rising waters. Today the reservoirs and surrounding area are a haven for wildlife and also provide fantastic opportunities for recreation, including walking, fishing and canoeing. The reservoirs are owned by Yorkshire Water but have public access and are well worth exploring via a network of paths. Walk routes and podcasts can be downloaded from www.yorkshirewater.com



Low Dam: located alongside the River Washburn between Blubberhouses and Thruscross, the Low Dam area is a haven for wildlife, combining wooded slopes, standing water and the river itself. It retains a number of wonderful historical features and is designated as a Site of Importance for Nature Conservation (SINC) due to its richness in flora and fauna. It is very popular with walkers, canoeists and naturalists. Access is via a public footpath opposite Fewston Reservoir car park on the A59 at Blubberhouses or from Thruscross Reservoir car park.



Mackenzies

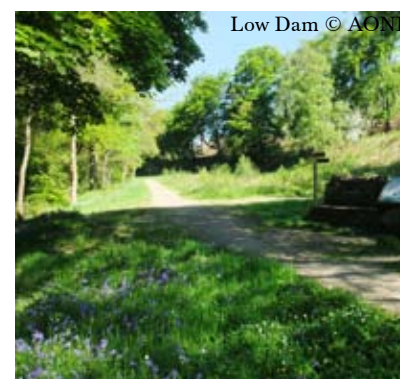
Smokehouse: this award winning smokehouse offers an extensive range of smoked food products including cheese, fish, bacon, ham, poultry and game. It has its own food and gift shop and there is also a restaurant where you can sample some of their food first hand. T: 01943 880369. www.yorkshiresmokehouse.co.uk



Fewston Reservoir © PHP



© AONB



Low Dam © AONB



Fishermen © PHP



© PHP

Fewston

Washburn Heritage Centre:

adjoining Fewston Church, with access from Swinsty Reservoir, this Heritage Centre displays exhibitions about the area's heritage, hosts a varied events programme and provides a venue for community events and concerts. There is also a café serving light refreshments and the centre can be accessed via a path from Swinsty Reservoir. **Open:** Apr to Oct – Sat & Sun 11am-4.30pm. Nov to Mar – Sun 11am-4pm. Also open Bank Holidays (excluding Christmas Day, Boxing Day & Good Friday). www.washburnvalley.org



Timble

A beautiful, sleepy village situated close to Swinsty and Fewston reservoirs.

Timble Ings: a large area of woodland on the western side of the Washburn Valley, owned and managed by Yorkshire Water.

It gets its name from 'Ings', which is an old Norse word for 'seasonally flooded land' and it is designated as a Site of Importance for Nature Conservation (SINC) due to its rich variety of habitats and wide range of flora and fauna. There are a number of rights of way through the woodland and on the adjacent moorland. We recommend that you use OS map 297 for details of the routes. Limited car parking is available opposite Anchor Farm at grid reference SE170542 or along the dirt track at SE165530.



Moorlands

The moors on the western side of the Washburn Valley are wild and beautiful. They are designated as Sites of Special Scientific Interest (SSSI) and are internationally important for birds. The moorland supports plants such as bilberry, cowberry, sundew, cotton grass and cross-leaved heath, which in turn supports bird species like Red Grouse, Curlew, Merlin and Golden Plover.

There is a network of rights of way across farmland onto the moors and once the unenclosed land is reached much of it is accessible on foot in accordance with the right of access to open countryside (see page 28 & 29).



Curlew on a wall © Dan Powell, Adrian Bury Associates

Don't leave the Southern AONB & Washburn Valley until you've:

- Walked round the reservoirs in the Washburn Valley
- Bought some delicious produce from Mackenzies Smokehouse
- Discovered the vast array of wildlife at Low Dam and Timble Ings
- Visited an exhibition at the Washburn Heritage Centre
- Explored the Spa town of Ilkley and market town of Otley



Cycle NIDDERDALE

Area of Outstanding Natural Beauty

Tour de France Grand Départ - Planning your visit - Road cycling
Family cycling - Mountain biking - Killer climbs - Way of the Roses

Make the environmentally friendly choice and see the AONB's landscape in all its glory and at your own pace! Rather than catch a fleeting glimpse of the scenery through a car window, why not travel by bike and watch as the landscape unfolds gradually before your eyes!

Cyclist at Scar House Reservoir © EM

The Tour de France Grand Départ 2014 is coming to the AONB!

The first two stages of the world's biggest road cycling race will be coming to the AONB in July as the Grand Départ of the Tour de France takes place in Yorkshire.

On the 5th July 2014 the first stage of 'Le Tour', will begin in Leeds and make its way through Otley and Ilkley on the southern boundary of the AONB before heading on to Skipton and through the Yorkshire Dales National Park. It will then enter the northern tip of the AONB at Jervaulx and skirt around its boundary to Masham and the cathedral city of Ripon before finishing in Harrogate.

The second stage on the 6th July will begin in York and make its way to Knaresborough before going right through the AONB between Harrogate and Bolton Abbey, including a climb at Blubberhouses. It will then continue on to its finish in Sheffield.

The bid to bring the Tour de France Grand Départ to Yorkshire has been led by Welcome to Yorkshire. Full details and maps of the route can be downloaded from Le Tour website at www.letour.yorkshire.com



Nidderdale AONB is a wonderful place for cycling with a combination of quiet country lanes, breathtaking scenery, delicious local food and drink, and welcoming places to stay.

It is the perfect place to base yourself for the Grand Départ as it is right in the centre of the action. The map opposite shows the AONB and the route for both days.

Read on to find out more about planning your visit for the Grand Départ. There are also some cycling routes in case you fancy being more than a spectator and having a go yourself!



Upper Nidderdale: stone barn and Gouthwaite Reservoir © JH



Cyclist above Beverley © AONB



Cyclist at Scar House Reservoir © EM

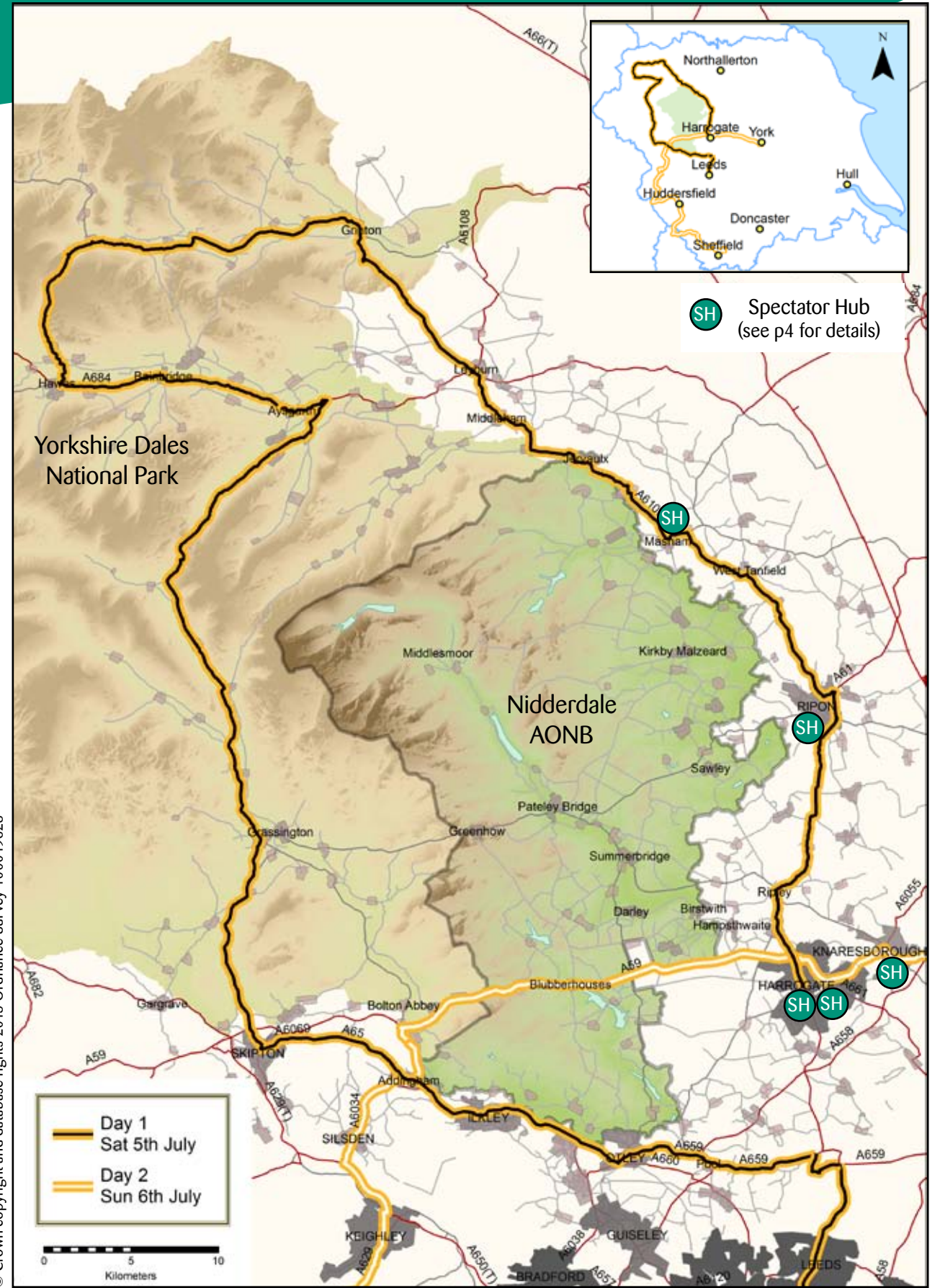


Heather moorland © EM



Mountain biking near Smelthouses © AONB

© Crown copyright and database rights 2013 Ordnance Survey 100019628



Planning your visit for the Grand Départ

The weekend of 5 & 6 July 2014 looks set to be a very special one and the AONB is the perfect place to base yourself as it sits right in the centre of the route. To make the most of this fantastic event here is some useful information to help you plan your visit.

Race timings

The Grand Départ is much more than a cycle race. Whether you choose to watch the race as it passes through a major town or city or you opt for a remote hillside in the Yorkshire Dales you will be entertained long before the cyclists appear.

The Caravan is a procession of 180 elaborate floats and vehicles that passes along the route immediately before the race. It stretches for about 20km in total distributing millions of souvenir items to fans at the roadside.

To find out when the fun begins you can view the race timings www.letour.yorkshire.com

Here is an idea of when the Caravan will pass through our area:

Day 1 - 5 July	Day 2 - 6 July
Masham 13:53	Harrogate 10:05
Ripon 14:14	Blubberhouses (climb) 10:36
Harrogate (finish) 14:46	

Road closures

In order to prepare the route for the race and for people to safely enjoy this amazing sporting event many roads in the area will be closed. The roads that form part of the route are expected to be closed for a minimum of eight hours, with most anticipated to be closed from early morning.

Choose your viewing point carefully and allow plenty of time to get there.

Full details of road closures in our area can be found at www.northyorks.gov.uk/article/28354/Grand-Dpart-2014--road-closures-and-map

Watching the race

There will be a number of 'spectator hubs' along the route where there will be activities and large screens for those who are unable to watch from the roadside. There will also be facilities such as toilets and car parking. Hubs in the Harrogate area will be at:

- Masham
- Ripon
- Knaresborough
- Harrogate
- Starbeck, Harrogate



For regular updates on the Grand Départ sign up to Welcome to Yorkshire's email newsletter at www.letour.yorkshire.com/email-updates

100 day cultural festival

To celebrate the Grand Départ coming to Yorkshire there will be a 100 day Cultural Festival, coordinated by Welcome to Yorkshire, which will run from the 27 March to the 6 July 2014.

The festival will showcase the wealth of art and culture on offer across Yorkshire and brings together a superb range of events.

The full programme of events can be found at www.festival.yorkshire.com



Accommodation

Accommodation in the AONB caters for everyone with luxurious hotels, cosy country cottages, family run B&Bs, caravan & camping sites and bunk barns. If you fancy something a little bit different you could even try a Yurt or a woodland shack!

Accommodation is likely to fill up fast for the time around the Grand Départ but some landowners and attractions are also opening up temporary campsites to allow as many people as possible to enjoy this special event.

To find out where to stay visit www.yorkshire.com, www.letour.yorkshire.com or www.visittharrogate.co.uk



Please help us to look after this special landscape by following the Countryside and Moorland Codes:

Respect other people

- Consider the local community and other people enjoying the outdoors
- Leave gates and property as you find them and stick to public footpaths unless wider access is available

Protect the natural environment

- Leave no trace of your visit and take litter home
- Keep dogs under close control and off the moors

Enjoy the outdoors

- Be safe – plan ahead and be prepared
- Follow advice and local signs and respect any warning signs

Help prevent uncontrolled moorland fires

- Never light fires on moorland – including BBQs
- Dispose of used cigarette ends carefully
- Respect any warning signs

Also:

- Please don't climb on walls or fences
- Camp and park in designated sites only – please don't park on the grass verges or moors as they are home to rare plants and animals.
- Take care to protect the historic environment



Stump Cross Caverns

Viewing of the spectacular fairy palace now open
Join us for a fairy door hunt and collect a bag of gem stones throughout the season

Tearooms with home baking
Gift shop with a fantastic selection of crystals and fossils



For more information about our special events visit our website, call or email
www.stumpcrosscaverns.co.uk • 01756 752780
enquiries@stumpcrosscaverns.co.uk

Group Accommodation for The Tour

Groups from 4 to 60+ members

Dorm-style secure accommodation

Overflow camping options

Secure over-night bike storage

4th, 5th and 6th July

From **£10/person/night**



Stay at The Hub of the Tour

Bewerley Park Centre

01423 711287

bewerley.park@northyorks.gov.uk | www.outdoored.co.uk

Motivational Learning in Inspirational Environments

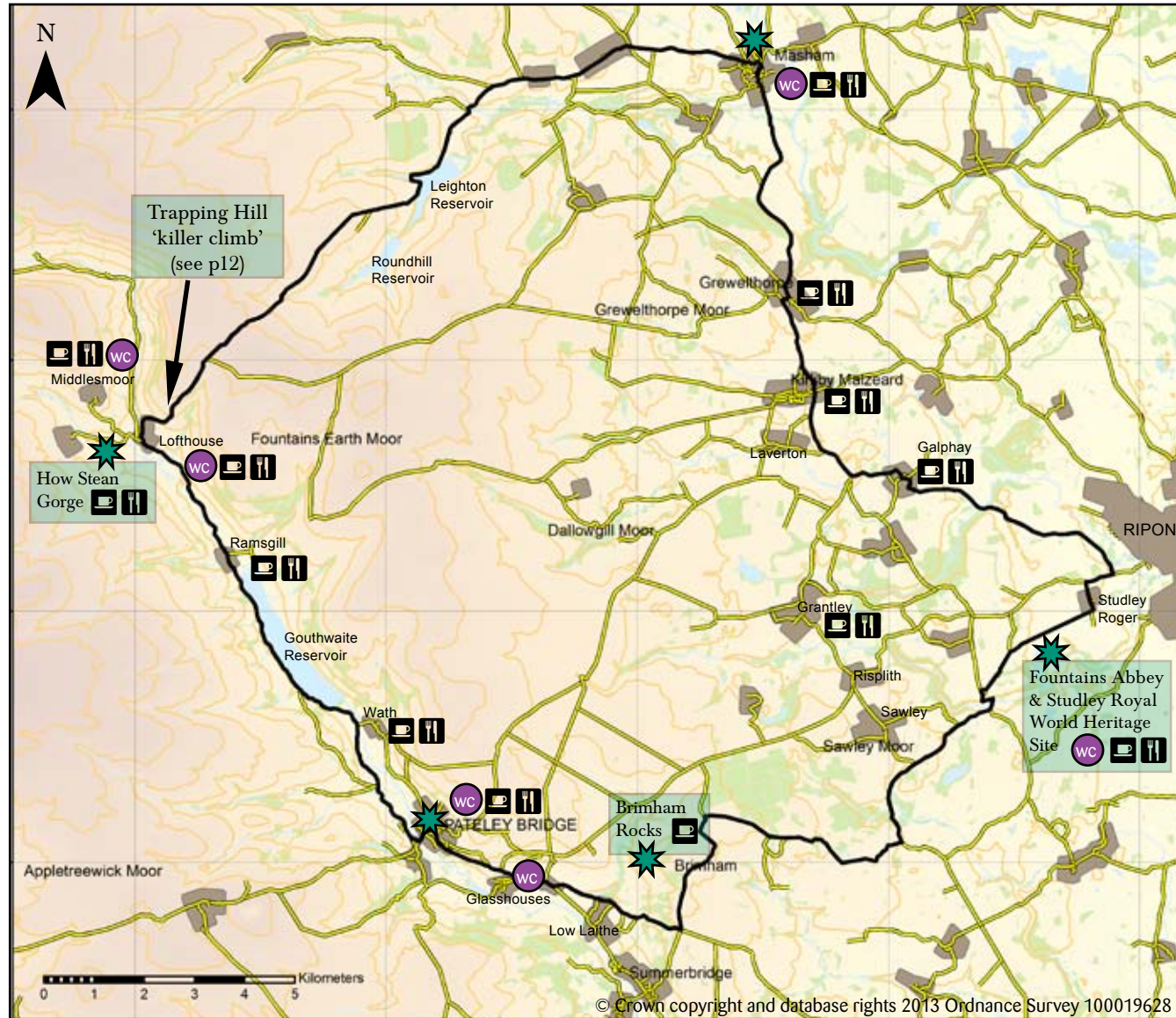
Road cycling

Cycling is a great way to get around the AONB and there is a good network of quiet lanes giving you an excellent choice of routes. The list of possible routes is endless but we have come up with a couple to help you start exploring the AONB.

For more information on cycling in the dales visit www.cyclethedales.org.uk or purchase a Harvey map 'Yorkshire Dales for Cyclists' which has lots of ideas about places to visit and things to see as well as detailed information about the routes.

Northern AONB

This 40 mile (65km) route explores the northern part of the AONB including Pateley Bridge, Upper Nidderdale, Masham and some of the eastern villages. There are some key attractions en route such as Fountains Abbey & Studley Royal World Heritage Site and Brimham Rocks which are well worth a visit.

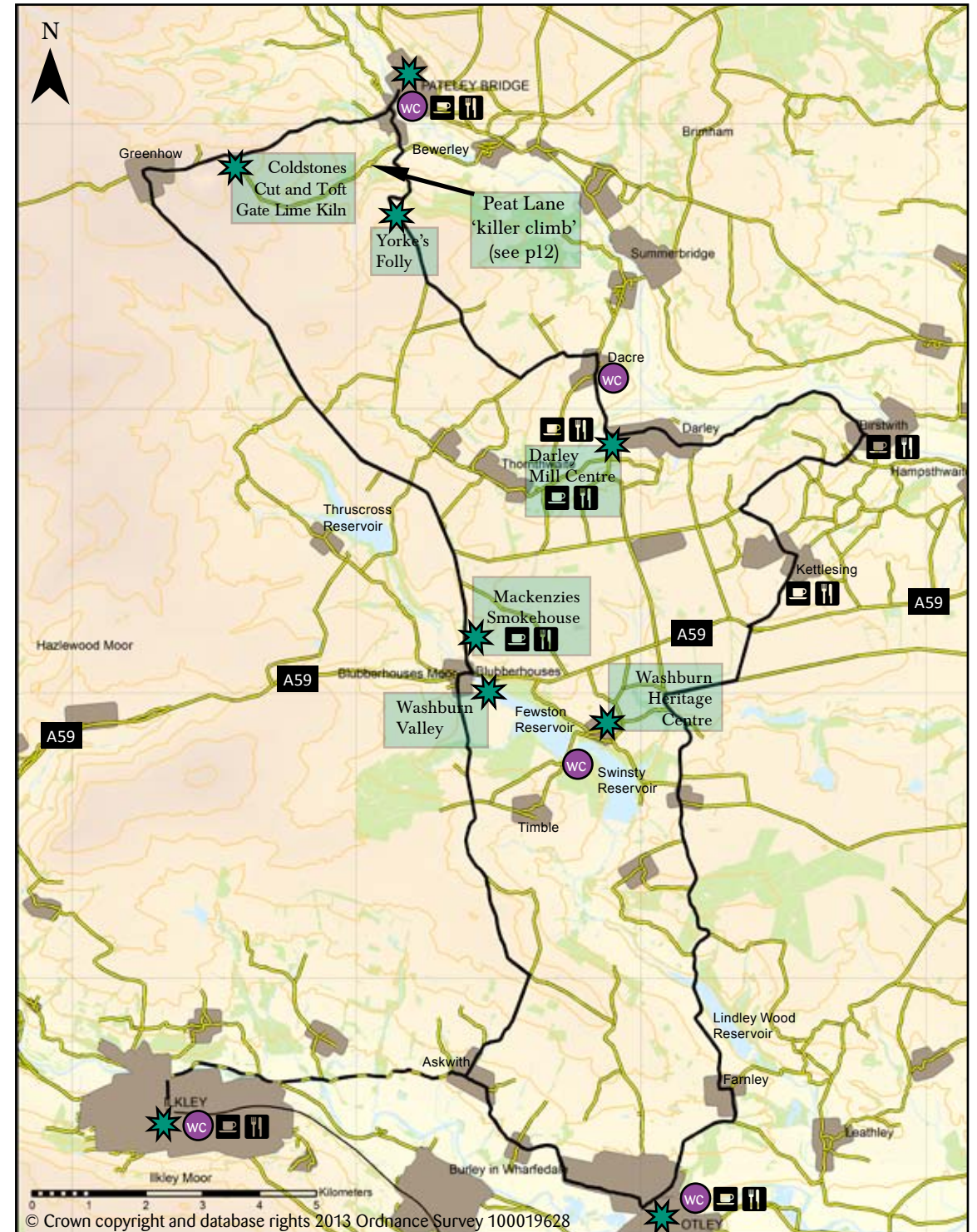


These routes are a guide only and we advise using the relevant Ordnance Survey map to plan your route fully and determine gradients. These routes are covered by the following orange 'Explorer' maps:

- Nidderdale (298)
- Lower Wharfedale & Upper Washburn Valley (297)

Southern AONB

This 39 mile (63km) route (with the option of an extra 4 miles (6km) each way to Ilkley) explores the southern part of the AONB.

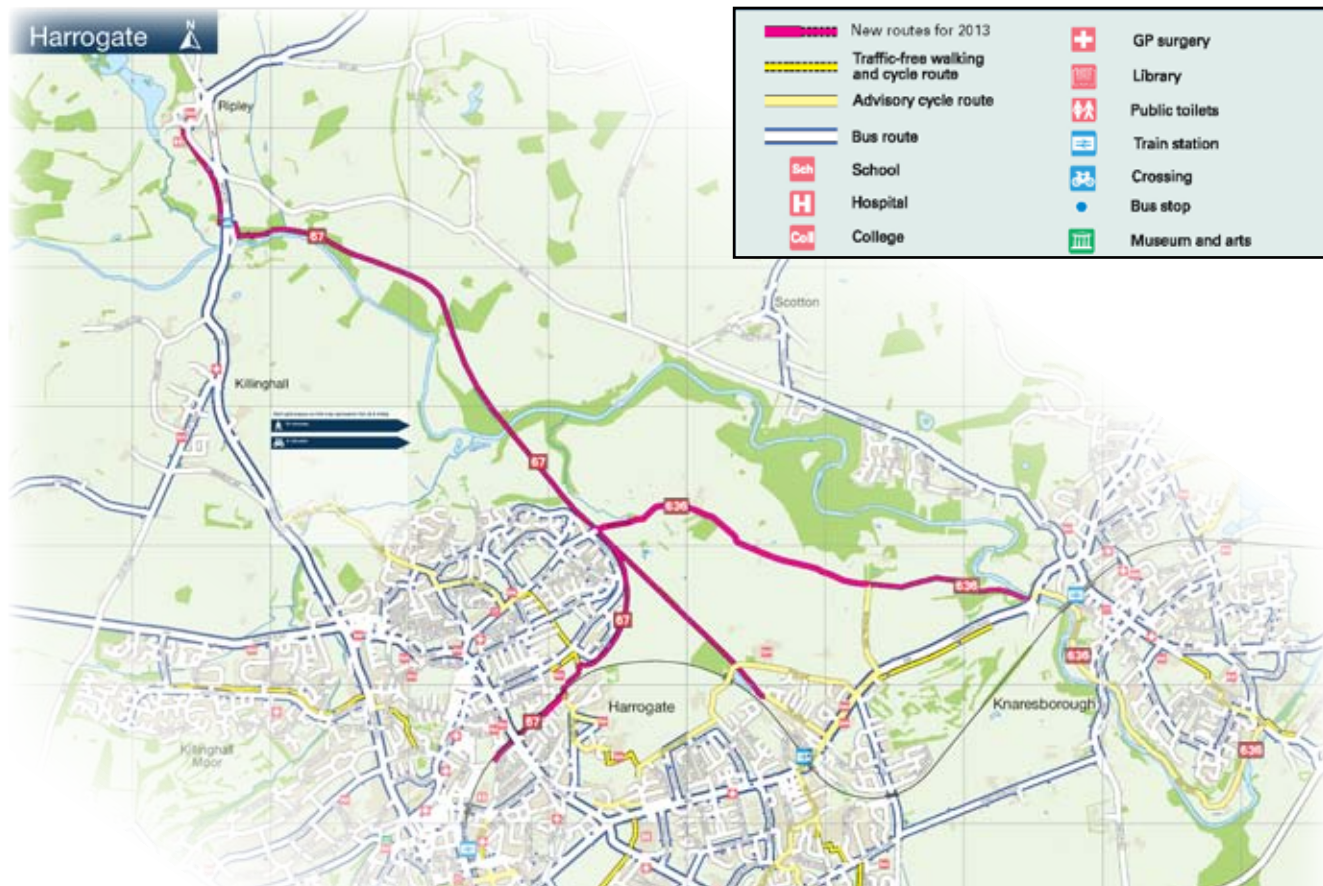


Family cycling

If you're new to cycling, have a young family or would just prefer a short, quiet ride away from traffic, there are a few options.

Nidderdale Greenway

This 4 mile (6.5km) traffic-free route connects Ripley, on the edge of the AONB, to Harrogate and Knaresborough on a fantastic converted railway line. In March 2014 the Greenway will be extended further north from Ripley to Clint taking you right into the AONB.



Each grid on the map represents an average 10 minutes' walk or four minutes' cycle ride.
Map © Sustrans.

Full details at www.sustrans.org.uk/ncn/map/route/harrogate-to-ripley

About Sustrans

Sustrans is the charity that's enabling people to travel by foot, bike or public transport for more of the journeys we make everyday.

It's time we all began making smarter travel choices.

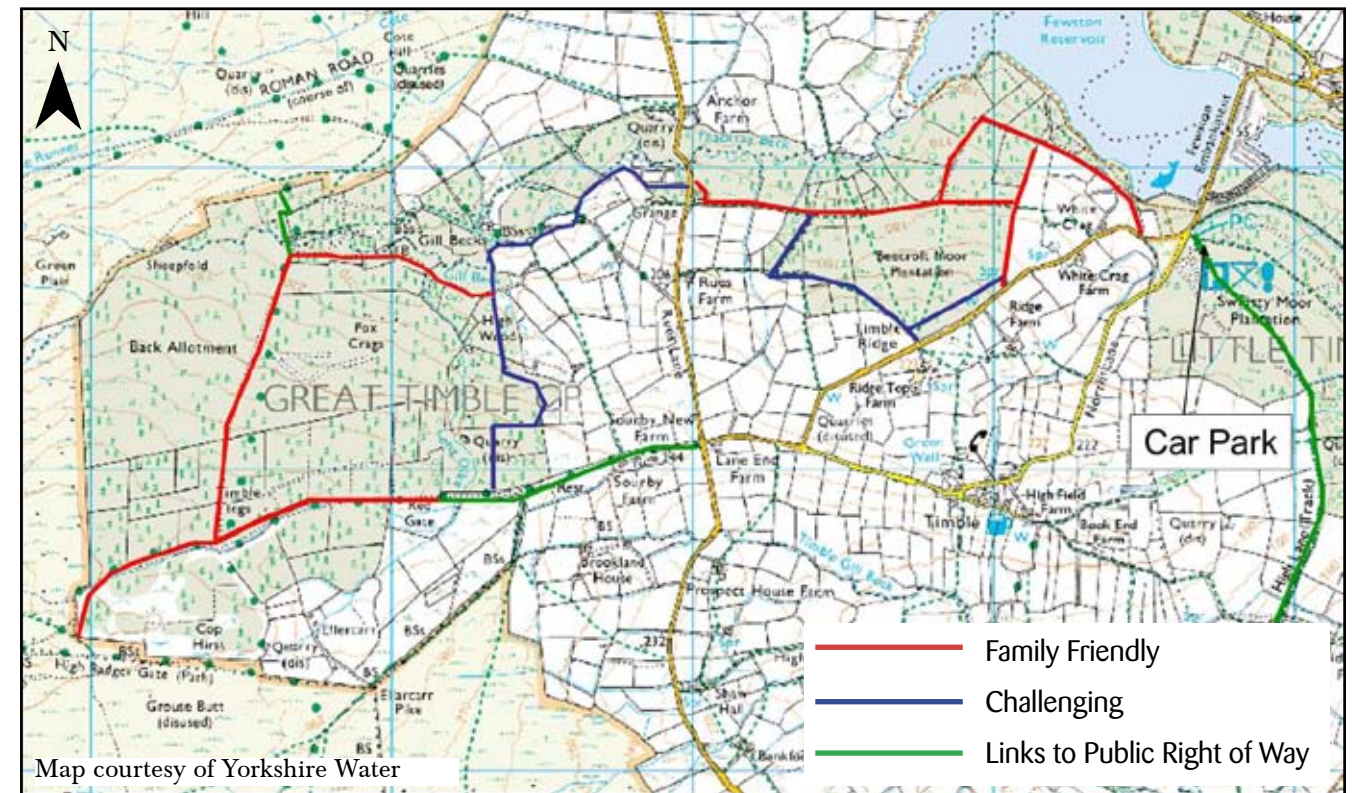
Make your move and support Sustrans today.

www.sustrans.org.uk



Fewston Reservoir - Yorkshire Water route

Yorkshire Water have created a series of cycle routes close to Swinsty and Fewston Reservoirs. There are family friendly routes as well as options for those who are a bit more confident. The routes use varied surfaces, including short sections of tarmac, hard stoned tracks and grassed areas which can be soft and muddy.



Yorkshire Water

The route uses permissive and public rights of way on land owned by Yorkshire Water for the collection, storage and supply of raw water.

The raw water storage reservoirs of Thruscross, Fewston and Swinsty help supply 1.24 billion litres every day to 4.7 million people and businesses across Yorkshire via their integrated water grid. In supplying this water they are committed to conserving and enhancing biodiversity on their land. In the woodland and water habitats you will see and hear wildlife benefiting from their management.

To find out more please visit www.yorkshirewater.com

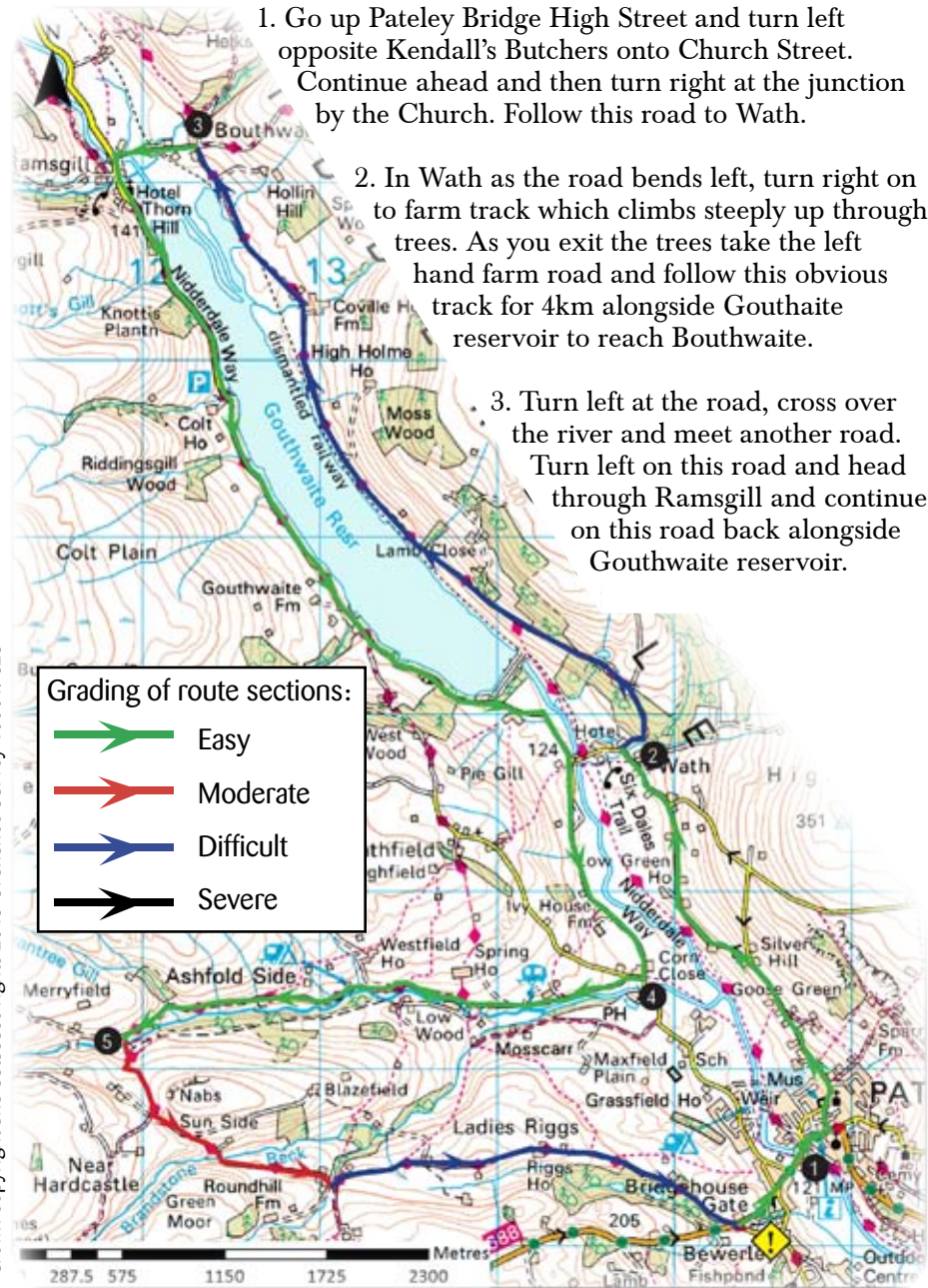


Mountain biking

Whether you're a beginner or an experienced rider, Nidderdale is a fantastic place for a spot of mountain biking. There's an extensive network of rights of way for cyclists in the AONB, which means that you can explore the area by bike and manage to avoid roads for much of the way.

Gouthwaite Circular

This is a good introductory route to Dales mountain biking using minor roads and good stone tracks. It takes you along the side of Gouthwaite reservoir, famous for its bird life, on a track and back down the other side on tarmac. A more technical section through some old mine workings then returns you to good stone tracks back to Pateley Bridge.



1. Go up Pateley Bridge High Street and turn left opposite Kendall's Butchers onto Church Street. Continue ahead and then turn right at the junction by the Church. Follow this road to Wath.
2. In Wath as the road bends left, turn right on to farm track which climbs steeply up through trees. As you exit the trees take the left hand farm road and follow this obvious track for 4km alongside Gouthwaite reservoir to reach Bouthwaite.
3. Turn left at the road, cross over the river and meet another road. Turn left on this road and head through Ramsgill and continue on this road back alongside Gouthwaite reservoir.

4. Go past the turning for Wath, and then 1km later take the right turn signed 'Heathfield' just before you reach the Bridge Inn. After 100m turn left signed 'Heathfield Caravan Park'. Follow this small road up the valley through a series of caravan parks. Eventually it turns into a good stone track.
5. Shortly after a gate there is a prominent fingerpost for the 'Nidderdale Way' on the left. You are now heading into the technical section - take care! Descend to a bridge over a stream. Opposite you are the old mine workings which the route zig zags through. At the top of the workings take the obvious track uphill. Go through a wall gap, keep on the track and then right at a track junction. Descend to swing right over a bridge, continue on and swing left over the next bridge. You are now on tarmac. Go up a short climb and then a long swoop back to Pateley. Get ready to brake as the main road has a habit of looming up. Turn left back to town.

Useful Information

- Toilets: Pateley Bridge.
- Pubs and cafes: Pateley Bridge, Wath, Ramsgill.

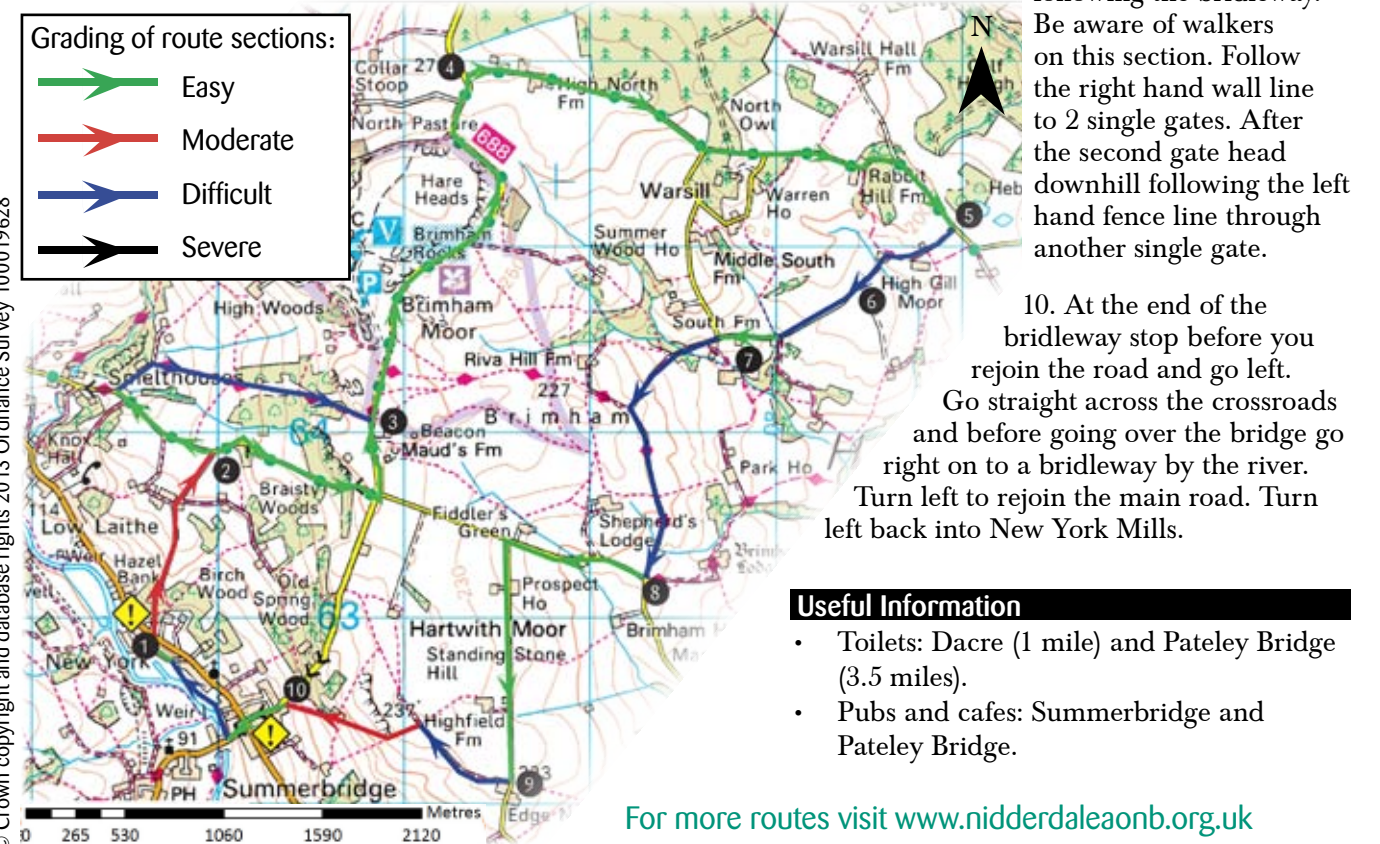
Distance
21 km (12 miles)
Starting Point
Pateley Bridge. Grid Ref: SE 157655.
Ascent
500 metres
Grade
Moderate

Brimham Loop

This is a ride of great variety. It starts with a tough but short climb up through woods and then follows quick and quiet roads through Brimham Rocks. More off road follows before another road section leads to stunning views of Nidderdale and a final descent along an ancient packhorse route.

1. From New York Mills turn right onto the main road and then take the first left onto a brideway heading uphill. When you get to the houses follow the brideway to the right and keep to the left hand track.
2. 2a) Turn right on to the road, heading up the steep hill OR 2b) Turn left and then take a brideway 700 metres down the hill on the right (signposted for the Nidderdale Way), directly after a house. Keep to the brideway for the Nidderdale Way heading uphill and at the end turn left on to the road. Be aware that this is challenging terrain.
3. Following 2a) turn left at the crossroads. 200 metres up the road you will pass the exit to route 2b).
4. Follow the road through Brimham Rocks for 2.5 km and then go right signposted for Warsill.
5. Follow the road for another 2.5 km, mostly downhill, through a section with a wood either side and once the road straightens out turn right on to a brideway before the Gilmoor Food sign.
6. Follow the track in a straight line to a farmyard and then turn left through a gate.
7. Keep going in a straight line passing a village hall on your left and continue up a steep hill. Take a slight left, following the Nidderdale Way brideway signs and continue on the track to a road.
8. Go right on the road and then after nearly a kilometre take the first left, signposted for Hartwith.
9. Just before some farm buildings 1km along the road turn right on to a brideway and then follow the track until a turn off on the left on to a packhorse route, still following the brideway. Be aware of walkers on this section. Follow the right hand wall line to 2 single gates. After the second gate head downhill following the left hand fence line through another single gate.
10. At the end of the brideway stop before you rejoin the road and go left. Go straight across the crossroads and before going over the bridge go right on to a brideway by the river. Turn left to rejoin the main road. Turn left back into New York Mills.

Distance
15.5 km (10 miles)
Starting Point
Summerbridge. Grid Ref: SE 197629.
Ascent
250 metres
Grade
Moderate



Useful Information

- Toilets: Dacre (1 mile) and Pateley Bridge (3.5 miles).
- Pubs and cafes: Summerbridge and Pateley Bridge.

For more routes visit www.nidderdaleaonb.org.uk

Up for a challenge?

If you fancy a bit more of a challenge then the AONB has some fantastic climbs and long distance routes which will really get your heart beating.

Killer climbs

Trapping Hill, Lofthouse

Distance: 1.3 miles

Total climb: 677ft

Avg gradient: 10%

Steepest gradient: 20%

Traffic volume: low to

medium (can be higher on bank holidays and sunny weekends) - please take care.

Start point: grid ref SE102735



View over valley from top of Trapping Hill © AONB

Beginning from the Crown Hotel in Lofthouse at the heart of Upper Nidderdale, this climb is probably the most gruelling and relentless in the Dale. As you leave the village the gradient increases to 10% and will only very occasionally and briefly drop below that until you emerge onto the moor at the top of the hill. The first corners are nasty but the straight that follows traversing back across the hill side should be used as a recharge point. From the next left hand corner the road goes straight up the hill with some agonising twists until eventually it very slowly begins

to level out with the last third of a mile being under 10%.

Peat Lane, Bewerley

Distance: 2 miles

Total climb: 711ft

Avg gradient: 7%

Steepest gradient: 22.5%

Traffic volume: very low all year round but please take care.

Start point: grid ref SE154644



Bewerley village © AONB

Starting at the locally famous False Tooth Bridge this climb gets very serious, very quickly and it just never ends. It climbs over 700ft and over one third of that in the first quarter of a mile. Warm legs are certainly advised for this beast. This quiet back lane starts with two tightly walled corners at nearly 20% each giving just the shortest of respite before hitting you with the rest of the hill, with 100yds of more than 20% climb. The next corner doesn't make it much easier with the gradient just dropping very slightly. Once this painful bit is over the hill presents you with three long straights of ever lessening gradient, the last being almost flat, before one last sprint climb.

Notes: On windy days the prevailing westerly wind will make for an adversarial head wind on this route.

Way of the Roses

Covering a total distance of 170 miles this coast to coast route starts from Morecambe Bay in the west, crossing the red rose county of Lancashire and the white rose county of Yorkshire, to Bridlington Bay in the east.

It is a challenging cycling adventure that runs through some of the most beautiful countryside in northern England. The route follows cycle paths, country lanes and

quieter roads and has varied and stunning scenery as it passes through the Lune Valley, Forest of Bowland AONB, the Yorkshire Dales National Park, Nidderdale AONB, the Vale of York, and the Yorkshire Wolds.

Full details can be found on the official Way of the Roses website at wayoftheroses.info and an official route map can be purchased from the Sustrans online shop at www.sustransshop.co.uk/products/5752-ncn-way-of-the-roses



Way of the Roses route near Brimham Rocks © AONB

A taste of Nidderdale

The AONB's farmed landscape makes it the perfect place for delicious, fresh local produce. Local shops, pubs, restaurants and accommodation take great pride in the high quality produce that can be found locally. Nidderdale Lamb, grouse from the moors, locally brewed beer and delicious ice cream are just a few of the specialities on offer so why not try them for yourself.

Meat, Fish & Cheese

There are a number of butchers and farm shops around the AONB which sell delicious meat products sourced from local farms, including award winning pork pies. Many also stock local delicacies, such as grouse and pheasant, providing the perfect opportunity to try something a little bit different.

Beer

If you are partial to a good pint then Masham is the place to go as it is home to two breweries, Black Sheep and Theakstons (see p24).

Flour

'Sunflours' range of flour is made in the north of the AONB, near Masham. Traditional methods of slow milling between two mill stones are used to produce high quality products including organic

and gluten free flours. Available from a variety of local retailers.

www.sunflours.com

Ice Cream

If you like ice cream you will love Nidderdale AONB. You will be spoilt for choice with the four ice cream producers. Therefore why not try them all:

- Brymor, Jervaulx
- Birchfield, Summerbridge
- Meadowdale, Lofthouse
- G & T's, Risplith

Preserves

Rosebud Preserves at Healey near Masham is a small family run business that prepares and cooks an unbelievable line of preserves from its own kitchen, a converted 19th century stone barn at Rosebud Farm. Products are available by mail order and from local retailers. www.rosebudpreserves.co.uk

Why buy local?

- It supports the farmers who manage our landscape and protects the environment by encouraging traditional farming practices, helping to maintain the diverse farmed landscape that characterises the area.
- Products travel a shorter distance reducing congestion and pollution on our roads.
- Local food is fresher and healthier as it is less likely to need processing and use preservatives.
- It reduces stress for livestock (caused by transportation) and food is tastier (stress can affect the quality of their meat).
- We have a better understanding of how and where our food is produced.
- Supporting local shops and suppliers supports local jobs and the wider rural economy.



Rosebud Preserves © PHP



Weatherhead's butchers, Pateley Bridge © AONB



© PHP



© PHP



© PHP

Kirkby Malzeard

Kirkby Malzeard is first mentioned in the 1086 Domesday Book as 'Churchei', meaning 'church in the clearing'. The village has a strong history in its buildings with 20 Grade II listed. It also has one Grade I listed building: St Andrew's Church was first built in 1150 and continued to be extended until it was mainly destroyed by fire in 1908. Restoration work took two years and cost £5500. Today it is an attractive village, away from the main tourist route and has a strong community feel.

Grewelthorpe

A pretty little village between Kirkby Malzeard and Masham.

Hackfall: a wonderful area of ancient semi-natural woodland set within a steep, rocky gorge of the River Ure. It is registered as a Grade I site in the English Heritage 'Register of Historic Parks and Gardens of special historic interest in England' highlighting its exceptional interest.



Bought in 1731 by the Aislabie family, Hackfall was gradually developed by William Aislabie into a fashionable picturesque woodland garden with follies, grottoes, surprise views and waterfalls. Today Hackfall is owned by the Woodland Trust, managed by the Hackfall Trust and is open to all who want to explore it. Many of the garden's features have recently been restored, thanks to funding from the

Heritage Lottery Fund, making it a truly beautiful place to explore at any time of the year. Hackfall is also a fascinating place for the keen naturalist and is designated as a Site of Special Scientific Interest because of the large number of birds, plants and invertebrates that make their home here.



Entry to the site is free but take care - streams, mud and slippery paths are all features, along with some steep drops. You can walk to Hackfall alongside the River Ure from Masham or on public rights of way from Grewelthorpe. There is also a small car park on the Grewelthorpe to Masham Road. www.hackfall.org.uk

Galphay

This beautiful village dates back to the 11th century and it is thought that its name means "gallow enclosure". Records from 1189 suggest that it was owned by Fountains Abbey.



www.westleas.co.uk
Mrs C Raw West Leas Farm Galphay Ripon
N Yorkshire HG4 3PB
01765658416 westleas@btinternet.com

**Barn conversions
between Pateley
Bridge and Ripon on
small farm**
5 holiday cottages
Recently converted barns
with wonderful views
Peace and quiet but lots to
see and do in beautiful area.

From £300-
£460 per week
Short breaks
available
Large garden
Pets welcome

Don't leave the East until you've:

- Explored Hackfall and its stunning follies, and discovered some of the geocache boxes hidden there
- Discovered some of the hidden nooks and crannies of Fountains Abbey
- Walked the Sawley circular walk and explored the many fascinating features en route
- Tried an ice cream from G & Ts – and your dog has tried 'gravy bone' flavour!



A special place for wildlife

Nidderdale AONB is a special place for wildlife and is home to many rare species of plants and birds. It is an important breeding ground for many birds, including grouse, curlew, and lapwing – which nest on the ground. There are heather moorlands, famous wildflower meadows and wonderful geological sites.

In springtime:

- look out for the curlew with its beautiful call and the oystercatcher with its long, bright orange beak
- watch the cute and playful baby lambs
- admire the tumbling display flight and distinctive call of the lapwing
- enjoy the sight and scent of the beautiful woodland flowers – bluebells and wild garlic - in Hackfall
- keep your ears open for the unmistakable call of the cuckoo

In summer:

- walk one of the paths through a hay meadow as they come alive with wildflowers
- hear the chatter of swallows and watch as they swoop low over rivers and meadows to catch insects
- see the heather moorlands turn purple as they come into flower during August
- discover some of the 180 species of wildflowers and shrubs growing amongst the ruins of the stunning Jervaulx Abbey
- admire the beautiful dragonflies and damselflies at Low Dam or Hackfall

In autumn:

- see more pheasants and grouse as the shooting season begins
- enjoy some fruits from the hedgerows, such as blackberries and sloe berries
- see how many different types of fungi you can discover
- witness tuppung time at the end of the season when rams (male sheep) are put to work to produce next year's spring lambs



Moor than meets the eye

Approximately one third of Nidderdale AONB is covered with some of the finest heather moorland in the country, which is internationally important for wildlife. These vast, open moors can be a great antidote to our busy, modern lives - perhaps because they seem wild and unmanaged - and offer a great escape. But although the heather moorland looks natural it is the result of careful management for red grouse and provides a livelihood for many farmers and gamekeepers, bringing in a great deal of money to the local economy.

Heather moorland © Paul Harris Photography

Where'er you roam

Since May 2005, visitors to the AONB have been able to walk freely over more than 50 square miles of moorland designated as Access Land in line with the Countryside and Rights of Way Act 2000 (CROW Act). The AONB's Access Land, all of which is in private ownership, contains internationally important wildlife as well as vantage points with superb views across the Dales towards distant horizons. This right of access gives everyone an opportunity to enjoy the AONB's landscape at its very best. The experience is unforgettable, even when the weather is not so kind, but we suggest you check up on a few things before you set out.

Access Land

The public can walk freely on mapped areas of mountain, moor, heath, downland and registered common land, known as Access Land, without having to stay on paths. You are permitted to walk, ramble, run, explore, climb and watch wildlife however, the act does not permit cycling, horse riding, driving a vehicle or camping.



Maps

Always carry an orange Ordnance Survey 'Explorer' map that shows the extent of Access Land in pale yellow. These maps contain vital information and have the access symbol on the cover. The maps are widely available and easy to use.

Nidderdale AONB is covered by the following orange 'Explorer' maps:

- Lower Wharfedale & Upper Washburn Valley (297)
- Nidderdale (298)
- Yorkshire Dales - Northern & Central Areas (OL 30)

Lambing Season: March to the end of May



Lambing in upland areas tends to happen later than in the lowlands. Your presence on the moor during this time should not be detrimental to lambing. However, loose dogs can cause serious problems and so should be kept on a short lead at all times.

For more information and details of closures:
www.naturalengland.org.uk
 E: openaccess@naturalengland.org.uk
 T: Open Access Contact Centre - 0845 1003298

Closures & Restrictions

Landowners are allowed by the legislation to close their moors for up to 28 days a year. This is done to protect ground-nesting birds from disturbance during the breeding season and walkers from risks that might be caused by heather burning and shooting. Closures are administered by Natural England and details are available from their website or from the Open Access Contact Centre. The information is updated daily.

Dogs

Most of the Access Land in the AONB is managed for grouse shooting, and owners have the right to exclude dogs at all times. Please check beforehand by consulting the Natural England website and keep an eye out for signs when you're out on the moors. If you don't have internet access, call the Open Access Contact Centre.

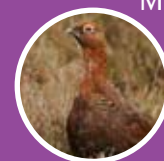
Even where dogs are welcome, you must keep them on short leads of no more than 2 metres between 1 March and 31 July to protect ground nesting birds from disturbance, or at any time of year when you are near livestock.

Fire

Access Land is sometimes closed due to the risk of uncontrolled fires. Large areas of moorland in the AONB have been lost to wildfires in the past and the risk increases as the summer unfolds. Closures due to fire risk are administered by Natural England in consultation with the Met Office and the latest information is available from the Natural England website or from the Contact Centre. If you see a fire outside the burning season, please ring 999.

Grouse Shooting Season: 12 August to 10 December

Most of the moorland in the AONB is managed for grouse shooting and during the shooting season, some moors may be closed while shooting takes place. If a moor remains open there should not be any danger to you, as long as you do not get too close to the shoot.



Wildfire!

It is all too easy for uncontrolled fires on the moors to start. A dropped match, smouldering cigarette ends or even a carelessly discarded bottle can set the dry heather and the peat underneath, ablaze. The open and often windy conditions of moorland mean that fires can easily burn out of control and can go unnoticed for miles causing vast devastation.

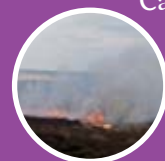
Moorland is the home to a wide range of wildlife many of which are internationally important species. Moorland fires can be deadly to all the wildlife in their path - moorland birds can be devastated, plant life destroyed and the landscape ravaged.

Moorlands are busy places and most of them are run as shooting estates, which provide a huge amount of money for the local economy. The cost of fighting a moorland fire can easily cost in excess of £50,000. When the value of lost income is added to this figure a big fire can cause at least £300,000 worth of damage. Moorland fires can therefore have a detrimental effect on the local economy and the effects can last for decades.

In order to avoid this devastation there are a few simple rules that should be followed:

- Never light a fire on moorland - that includes gas stoves and barbecues too.
- Never stub cigarettes out on moorland or throw smoking materials out of a car window when driving through moorland - always take cigarette ends and spent matches home.
- Never leave broken glass or discarded bottles behind on moorland.
- Respect all warning signs.

If you see a moorland fire at any time outside of the heather burning season call 999 and alert the fire brigade. If possible also report the fire at the nearest house but do not attempt to fight the fire without assistance.



Heather Burning Season: October 1 to April 15

Carefully controlled fires are purposely lit by experts to encourage fresh heather shoots to grow, providing food for birds and sheep. It is important to realise that this burn is very carefully controlled and it is the uncontrolled fires that can cause devastation to moorland.

Important dates to remember

Ground Bird Nesting Season: March to July



Ground-nesting birds are rearing their young chicks and this time of year is critical for upland birds. Disturbance - particularly from loose dogs - can have a negative impact on the success of the breeding season.

Walk Nidderdale AONB



Walkers above Gouthwaite Reservoir © Janina Holubecki

Download free route maps for these walks, and many others, from www.nidderdaleaonb.org.uk

There are 510 miles (820km) of public footpaths and bridleways in the AONB. From long distance routes to easy strolls there is something to suit everyone's ability and interest. The list is endless but here are just a few of our favourites to get you started.

Short walks

Bewerley Tree Trail: includes the delightful village of Bewerley and the historic Fishpond Wood. **Length:** 1.25 miles (2km). **Time (approx):** 1 hour. **Difficulty:** easy

Blubberhouses Tree Trail: a beautiful riverside walk with a variety of tree species, some wonderful heritage features and a vast range of wildlife. **Length:** 3 miles (5km). **Time (approx):** 1-2 hours. **Difficulty:** moderate.



Medium walks

Sawley Circular: explore the eastern edge of the AONB - includes a number of historically interesting features, including Fountains Abbey & Studley Royal World Heritage Site, beautiful woodland and wildflowers. **Length:** 5.5 miles (9km). **Time (approx):** 2-3 hours. **Difficulty:** moderate.



Dacre Walls Walk: takes you through the ancient enclosures in Dacre Parish where you will discover the area's history "written in stone" and be provided with a glimpse of the land's past use and management. **Length:** 5.5 miles (9km). **Time (approx):** 2-3 hours. **Difficulty:** moderate.

Long walks

Crackpots Mosaic Trail: a really enjoyable walk around Dallowgill, waymarked by a series of mosaics which illustrate local scenes and flora and fauna. **Length:** 7 miles (11km). **Time (approx):** 3-4 hours. **Difficulty:** moderate



Jervaulx Abbey Circular: this beautiful walk starts and ends at the fascinating ruins of Jervaulx Abbey, near Masham. It takes you through stunning parkland, over lush pasture fields and through the historic village of Thornton Steward. **Length:** 7 miles (11km). **Time (approx):** 3-4 hours. **Difficulty:** moderate



Long distance trails



Six Dales Trail: this long distance linear trail traverses the full length of the AONB. It runs for 38 miles (61km) from Otley, in Wharfedale, northward to Middleham, in Wensleydale. Along its way it crosses the five watersheds that separate

the six dales that give the trail its name. From Wharfedale it passes over into Washburndale, then into Nidderdale, Colsterdale, Coverdale and finally Wensleydale. More information and a route guide can be found at www.waw-otley.org.uk

Nidderdale Way: a 53 mile (85km) circular walk from Pateley Bridge which takes you through beautiful and contrasting countryside from the spectacular uplands around Scar House Reservoir to more gentle, rolling pasture fields and river valleys along the course of the Nidd. The route follows well used public footpaths, bridleways and roads and has its own unique waymarker, which you will see along the way. The full route is shown on the Ordnance Survey Explorer 298 map. There is also a handy waterproof map (by Harvey Maps) specifically on the Nidderdale Way, which includes useful information on the local area.



Pateley Bridge Walking Festival
Now in its fifth year, the 2014 Pateley Bridge Walking Festival will run from Thursday 25th to Sunday 28th September with its customary selection of routes designed to encourage everyone to explore this Area of Outstanding Natural Beauty on foot.

The Walking Festival was originally launched by a group of local volunteers who were keen to offer people the opportunity to enjoy walks in Nidderdale of varying lengths and difficulty in the company of knowledgeable local guides. This year, there will be a chance to find out more about the area's history on the 'Special Interest' walks. Other walks will take in some of the lesser known parts of Nidderdale including moorland, reservoirs, woods and rivers. Distances covered range from 3 miles to around 15 miles. The detailed programme will be published on-line and via leaflet in May 2014.

www.pbwf.co.uk

Walking close to cows

Walkers should be aware that cows (especially those with calves) can be dangerous, especially when you are accompanied by a dog. By following this simple advice, issued by the NFU and the Ramblers Association, walkers can minimise the risk of an incident happening:

- | | |
|--|---|
| <p>Do</p> <ul style="list-style-type: none"> ✓ Do be prepared for cattle to react to your presence, especially if you have a dog with you. ✓ Do move quickly and quietly and if possible walk around the herd. ✓ Do keep your dog close and under effective control. ✓ Do report any problems to the highway authority. | <p>Don't</p> <ul style="list-style-type: none"> ✗ Don't hang onto your dog - if cattle threaten you let it go and the cattle will chase the dog. ✗ Don't get between cows and their calves. ✗ Don't put yourself at risk - find another way round the cattle and rejoin the footpath as soon as possible. ✗ Don't panic or run - most cattle will stop before they reach you. If they follow just walk on quietly. |
|--|---|



NIDDERDALE AONB Events 2014

A host of countryside events for all the family

Discover more about the AONB's beautiful countryside and the special qualities of the area through our programme of exciting events.

- Your AONB
- Enjoy
- Wildlife & Habitats
- Get Involved
- Living & Working
- Heritage

Important information

Booking: some events must be booked in advance. Where booking is not essential it is highly recommended to guarantee your place. Your safety and enjoyment are very important to us and we therefore have to adhere to guidelines on group numbers. Unfortunately this means that we might have to turn people away but we ask that you respect the decision of the event leader.

Please note that bookings are non-refundable unless the event is cancelled by the AONB.

Cancellation of events: sometimes circumstances beyond our control may lead to an event being cancelled. Every effort will be made to contact people that have booked but if you haven't booked we recommend that you contact us to check the event is still going ahead. We reserve the right to postpone or cancel any events.

Meeting point: please ensure that you know where the meeting point is. Some events are in remote locations but directions are available from the AONB office on request.

Food and drink: if you need a packed lunch it will say in the event details but you may want to bring a drink and snack to all events.

Clothing and equipment: it is essential that you come dressed/equipped accordingly for the event and the weather conditions. The weather can be very different on higher ground so please come prepared. Event leaders can only accept participants who are prepared for the conditions. Always bring:

- sturdy footwear, preferably walking boots
- waterproofs
- warm, layered clothing


Children are welcome on all events, unless it says otherwise, but under 16s must be accompanied by an adult.

Dogs are not allowed unless stated. When dogs are allowed they must be well behaved, kept on a short lead at all times and be fit enough for the terrain.

Toilets: many events are in remote locations with no toilet facilities.

Book online at <http://nidderdaleaonb.eventbrite.co.uk>
T: 01423 712950 or E: aonbevents@harrogate.gov.uk



Events marked  are part of the 'Flowers of the Dales Festival' - a fantastic range of wildflower inspired events and activities throughout the Yorkshire Dales.

Find the full festival programme at www.ydmt.org

WILDLIFE Watch

If you care about nature and the environment and want to explore your local wildlife - this is the club for YOU!

We have an amazing time in the fresh air doing things like pond dipping, den building and treasure hunts. When we're not doing practical activities we do loads of fun and messy crafts and great games. You can work towards your 'Hedgehog Award' and you'll be awarded a very cool certificate. Come and give it a try. We look forward to seeing you.....

More details on p15 or at www.nidderdaleaonb.org.uk

Nidderdale AONB & the First World War

A range of public events linked to the area's fascinating First World War history will take place this year, as part of our three year First World War Centenary project (see p27). Further updates, including booking information, will be available at

www.nidderdaleaonb.org.uk



April 2014



Family Firecraft
Wednesday 9, 1pm to 4pm

Come and learn the secrets of building and lighting a campfire without resorting to matches and maintain it to make charcoal, cook popcorn and toast marshmallows. Qualified forest school practitioner Annie Berrington will lead this session, outlining safe practice and procedure around fire. Suitable for children aged 4+ accompanied by adults.
At: Lime Tree Farm, Hutts Lane, Grewelthorpe, HG4 3DA. **Cost:** £5 per child, adults free.
Booking essential



Birdwatching Stroll
Tuesday 29, 6.30pm to 8.30pm

Join members of Nidderdale birdwatchers for an evening stroll in Pateley Bridge and along the River Nidd looking for resident and spring visitors. Bring binoculars if possible. An easy walk on level paths but it can be muddy. **Meet:** Pateley Bridge Showground car park. **Cost:** £5 per adult, under 16s free. **Booking not required**

May 2014

Wild Art
Saturday 24, 1pm to 4pm

Take inspiration from nature and create some wild art using natural materials at this creative outdoor session. Annie Berrington from Get Out More will help you gather leaves, flowers and grasses and create original artworks to take home using printing, collage and natural dyeing techniques. A family event with activities suitable for children aged 4+ accompanied by adults. **At:** Lime Tree Farm, Hutts Lane, Grewelthorpe, HG4 3DA. **Cost:** £5 per child, adults free. **Booking essential**



Pond Dipping
Tuesday 27, 11am to 3pm

Pick up a net and see what weird and wonderful creatures you can find in the pond today. **At:** Fountains Pond, Hackfall. **Cost:** £2.50 per child, adults free. **Drop in - booking not required**

Bat Walk
Friday 30, 8.45pm to 10.45pm

Join John Drewett of North Yorkshire Bat Group and discover these wonderful night time creatures in the stunning surrounds of Hackfall. Approx 3 miles. Paths are steep in places and can be muddy/slippy. Please bring a torch. **Meet:** Hackfall car park, on the Grewelthorpe to Masham Road. **Cost:** £5 per adult, under 16s free. **Booking essential**

June 2014



Heritage Skills - Dry Stone Walling
Wednesday 11, 10am - 4.30pm

Learn about the history of dry stone walls, some of their features and the theory behind this traditional skill, before heading out into the AONB for a hands-on walling session with the Nidderdale AONB Walling Group. Not suitable for under 16's. **You will need:** Sturdy footwear (steel toe caps if possible) and old clothes. **Meet:** Nidderdale Plus Partnership Office, 7 The Old Workhouse, King Street, Pateley Bridge, HG3 5LE. **Cost:** £10 per person (includes buffet lunch). **Booking essential**

July 2014



Wildflower and Butterfly Walk
Saturday 12, 1.30pm to 3.30pm

Discover the beautiful wildflowers and butterflies of Duck Street Quarry, Greenhow. By kind permission of Dr Mike McAvoy. **Meet:** Toft Gate car park, Greenhow. **Cost:** £5 per adult, under 16s free. **Booking essential**

July 2014

Rock Art Walk Sunday 13, 1pm to 4pm

Dr Keith Boughey leads this fascinating two-part walk to find hidden prehistoric carvings in Nidderdale. A moderate 3 mile (5km) walk followed by a brief car journey to Heyshaw Moor for a further short walk. **Meet:** Pateley Bridge Showground car park. **Cost:** £5 per adult, under 16s free. **Booking essential**

Poet Laureate in Pateley Saturday 19, 3pm to 4.30pm

Come and meet the nation's Poet Laureate, Carol Ann Duffy, as she performs her classic fairy tale, 'The Princess' Blankets'. The story of a princess who cannot get warm, until a travelling musician saves her and the kingdom from a terrible spell. With musical accompaniment from John Sampson, this family event is suitable for children age 5+. **At:** Pateley Bridge Memorial Hall. **Cost:** £6 per adult, £3 per child. **Booking essential**

Woodland Adventure Friday 25, 11am to 2pm

If you go down to the woods today there's sure to be a big adventure. Families can take part in woodland games and challenges, tracking and shelter building with forest school leader Annie Berrington. Bring a packed lunch. Activities suitable for children aged 4+ accompanied by adults. **Meet:** Fountains Pond, Hackfall, near Grewelthorpe. **Cost:** £5 per child, adults free. **Booking essential**

Swinton Park, Nutwith Cote and Hackfall Heritage Walk Sunday 27, 9.30am to 1.30pm

Join Paul Mosley on this 6 mile (9.5km) heritage gardens and woodland walk. The walk explores the wonderful grounds of Swinton Park as well as the historic Nutwith Cote Farm and Hackfall with its amazing follies and water features. **Meet:** Swinton Park Estate car park. **Cost:** £5 per adult, under 16s free. **Booking essential**

August 2014

Moth Breakfast Saturday 2, 8am to 10.30am

A fantastic morning event for those early birds! Join Charles Fletcher to discover more about these magnificent creatures and see what has been found the night before. After there will be the opportunity to enjoy breakfast at Grewelthorpe Village Hall. Paths are steep in places and can be very muddy/slippery. **Meet:** Hackfall car park. **Cost:** £5 per adult, under 16's free (plus money for breakfast). **Booking essential**

Coldstones Quarry Geology Walk Wednesday 13, 6pm to 8pm

Take a look at the geology of Coldstones Quarry from the inside. This fascinating guided walk will be on rough ground and it may be muddy. Walking boots and wind proof clothing are recommended. Hard hats will be provided. **Meet:** Coldstones Quarry Offices, Greenhow. Entrance off the B6265 at the Pateley Bridge side of Greenhow. **Cost:** £5 per adult, under 16s free. **Booking essential**



© EM

Discover Hackfall Sunday 17, 10am to 12.30pm

Join Paul Mosley for a walk of discovery and enjoy the beauty and history of the Hackfall Aislabie Landscape Gardens. Approx 3 miles (5km). The paths are steep in places and can be very muddy/slippery. Dogs welcome. **Meet:** Hackfall car park, on the Grewelthorpe to Masham Road. **Cost:** £5 per adult, under 16s free. **Booking recommended**



© Paul Mosley

Earth Oven Building Workshop Tuesday 19, 9.30am to 4.30pm

Come and get your hands dirty and learn how to build an earth pizza oven. This is a hands on session and we will build a clay oven from scratch. Great fun for all the family. Suitable for age 5+. Please wear old clothes and bring a packed lunch. **At:** AONB Volunteer Base, Bewerley Park. **Cost:** £10 per adult, £5 per child (under 16). **Booking essential**

Geology of the Greenhow area Monday 25 August, 2pm to 4pm

Explore the fascinating geology and landscape of Greenhow with local geologist Adrian Kidd. This two mile walk includes some steep climbs and may cross rough, boggy ground and fields containing livestock. **Meet:** Toft Gate / Coldstones Cut car park, Greenhow. **Cost:** £5 per adult, under 16s free. **Booking recommended**

September 2014



© Taste the Wild

Hedgerow Fruits Jam Making Sunday 21, 10am to 2pm

Join Chris Bax from 'Taste the Wild' on this fun foraging and jam making session. Head out into the AONB to see what fruits you can find before making them into a pot of jam or jelly to take home. Please bring a packed lunch. **At:** To be confirmed nearer the time. **Cost:** £10 per adult, £5 per child (under 16). **Booking essential**

'Caring for your Historic Building' – an event for owners & occupiers of historic buildings Saturday 27, 10am to 5pm

An interactive day with talks, demonstrations and a guided walk. A joint event with the Yorkshire Dales National Park Authority. **At:** West Burton Village Hall, DL8 4JY. **Cost:** £15 per person, incl. buffet lunch and refreshments. **Booking essential**

October 2014

Heritage Forum: Friday 10, 10am to 4pm

A day of talks and workshops exploring WWI and its effect on the landscape and communities of the AONB. **At:** To be confirmed. **Cost:** To be confirmed. **Booking essential**

Aislabie Walk Saturday 18, 9am to 5pm

A 12 mile (19.5km) circular walk along part of 'The Aislabie Walk', which links the designed landscapes at Studley Royal and Hackfall. Starting and ending at Studley, the walk will go just beyond Galphay taking in some fascinating heritage sites in between. Dogs welcome. Please bring a packed lunch or money for a pub lunch at the Galphay Inn. **Meet:** Lakeside car park at Studley Royal (approx. £3 for the day or free to NT members). **Cost:** £5 per adult, under 16s free. **Booking essential**

Bird Box Making Tuesday 28, 10am to 12.30pm

Have a go at making your own bird nesting box to take home. **Meet:** AONB Volunteer Base at Bewerley Park Outdoor Centre. **Cost:** £5 per person. **Booking essential**

November 2014

Explore Greenhow's mine Tuesday 4, 6pm to 8.30pm

Follow in the footsteps of the Greenhow miners on this trip down Gillfield Mine. Mainly walking along a level passage way with ladders to an upper level. Wellington boots are essential and old waterproofs are recommended. Hard hats with lamps will be provided. **Meet:** Coldstones Quarry Offices, Greenhow. Entrance off the B6265 at the Pateley Bridge side of Greenhow. **Cost:** £5 per adult, under 16s free. **Booking essential**

SHOW Diary

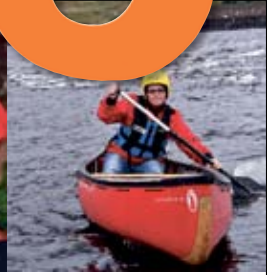
Get a real taste of rural life at one of the area's many agricultural shows and country fairs. With livestock and produce judging, trade and craft stalls, games, entertainment, fantastic local food and much much more, they are not to be missed!



- Otley Show**
Sat 17 May
www.otleyshow.org.uk
- Askwith Show**
Sat 14 June
- Birstwith Show**
Sat 26 July, 12noon to 5pm
www.birstwithshow.com
- Ripley Show**
Sun 10 August
www.ripleyshow.co.uk
- Nidderdale Show**
Mon 22 September
www.nidderdaleshow.co.uk
- Masham Sheep Fair**
Sat 27 & Sun 28 September
www.mashamsheepfair.com

Are you
up for

The
Big 5



Gorge Scramble

Via Ferrata Course

Caving

Abseiling

Canoeing



New for 2014
**ULTIMATE VIA
FERRATA**

Test your nerves and
head for heights - it's
just got a whole lot
bigger!

How Stean Store
Gorgeous food, gifts and more!

*...for the less energetic enjoy home
cooked meals and cakes in our cafe or
step into nature and explore the gorge
and take in the natural beauty!*

For information or to book call: 01423 755666 | www.howstean.co.uk



@howstean

Get in touch:
Nidderdale AONB,
The Old Workhouse,
King Street,
Pateley Bridge,
Harrogate, HG3 5LE



Supported by:

Harrogate
BOROUGH COUNCIL

Working for you



defra
Department for Environment
Food and Rural Affairs

T: 01423 712950
E: nidderdaleaonb@harrogate.gov.uk
W: www.nidderdaleaonb.org.uk