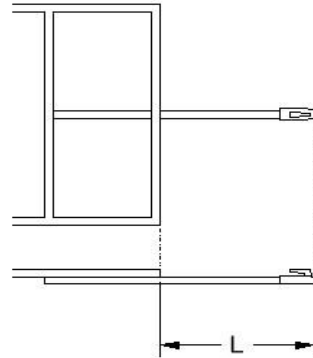


SIMPLE TONGUE STRENGTH TABLE - British Version

The figures in blue are the maximum loaded trailer weight in kg.
 These are for welded mild steel tongues.
 Read in conjunction with the accompanying notes.
 Unbraked trailer weights much over 750kg are not shown, since UK law requires brakes at this weight.

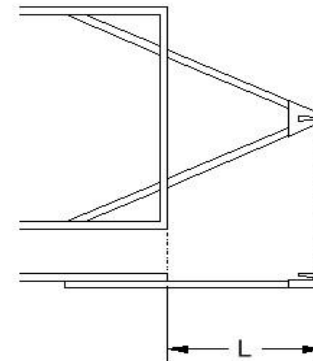
Single Tongue

	Tongue length L, mm				
50 x 50 x 3.0 Square Hollow Section/Tube					
	750	900	1050	1200	1350
Off-road	320	270	230	200	180
Braked road	450	375	320	280	250
Unbraked road	675	560	480	420	375
60 x 60 x 3.0 Square Hollow Section/Tube					
	750	900	1050	1200	1350
Off-road	485	405	345	305	270
Braked road	675	560	480	420	375
Unbraked road	-	840	720	630	560
70 x 70 x 3.0 Square Hollow Section/Tube					
	750	900	1050	1200	1350
Off-road	680	565	485	425	375
Braked road	945	785	675	590	525
Unbraked road	-	-	-	-	785



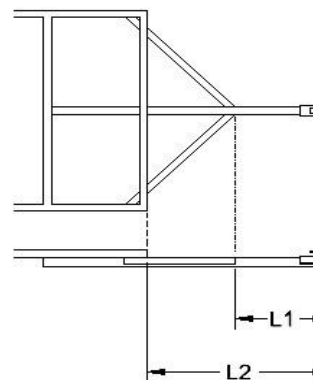
A-Frame

	Tongue length L, mm				
50 x 50 x 3 Equal Angle					
	750	900	1050	1200	1350
Off-road	155	130	110	95	85
Braked road	215	180	155	135	120
Unbraked road	320	265	230	200	180
50 x 50 x 5 Equal Angle					
	750	900	1050	1200	1350
Off-road	250	210	180	160	140
Braked road	350	290	250	220	195
Unbraked road	525	440	375	330	290
50 x 25 x 3.0 Rectangular Hollow Section/Tube with 50 dimension vertical					
	750	900	1050	1200	1350
Off-road	370	310	265	230	205
Braked road	515	430	365	320	285
Unbraked road	770	645	550	480	430
50 x 50 x 3.0 Square Hollow Section/Tube					
	750	900	1050	1200	1350
Off-road	645	540	460	405	360
Braked road	895	750	640	560	500
Unbraked road	-	-	-	840	750



Composite Tongue

	Central-only Length L1 + Total Length L2, mm				
50 x 50 x 3.0 Square Hollow Section/Tube Central Tongue + 50 x 50 x 3 Equal Angle Diagonal Braces					
	500+750	600+900	700+1050	800+1200	900+1350
Off-road	475	395	340	295	265
Braked road	660	550	475	415	365
Unbraked road	-	830	710	620	550
60 x 60 x 3.0 Square Hollow Section/Tube Central Tongue + 50 x 50 x 5 Equal Angle Diagonal Braces					
	500+750	600+900	700+1050	800+1200	900+1350
Off-road	730	605	520	455	405
Braked road	1010	840	720	630	560
Unbraked road	-	-	-	-	-
70 x 70 x 3.0 Square Hollow Section/Tube Central Tongue + 50 x 25 x 3.0 Rectangular Hollow Section/Tube Diagonal Braces with 50 dimension vertical					
	500+750	600+900	700+1050	800+1200	900+1350
Off-road	1020	850	725	635	565
Braked road	1415	1180	1010	885	785
Unbraked road	-	-	-	-	-

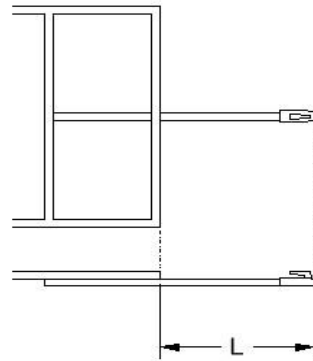


SIMPLE TONGUE STRENGTH TABLE - British Version (Imperial Units)

For those that hate metric units, this table uses imperial units but with metric steel sections.
 The figures in blue are the maximum loaded trailer weight in pounds.
 These are for welded mild steel tongues.
 Read in conjunction with the accompanying notes.
 Unbraked trailer weights much over 1650lb are not shown, since UK law requires brakes at this weight.

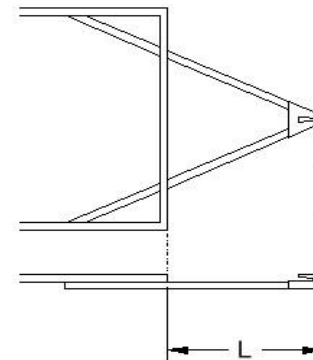
Single Tongue

	<i>Tongue length L, in</i>				
50 x 50 x 3.0 Square Hollow Section/Tube (approx 2" x 2" x 1/8")					
	30	35	41	47	53
Off-road	710	600	510	440	400
Braked road	990	830	710	620	550
Unbraked road	1490	1230	1060	930	830
60 x 60 x 3.0 Square Hollow Section/Tube (approx 2-3/8" x 2-3/8" x 1/8")					
	30	35	41	47	53
Off-road	1070	890	760	670	600
Braked road	1490	1230	1060	930	830
Unbraked road	-	1850	1590	1390	1230
70 x 70 x 3.0 Square Hollow Section/Tube (approx 2-3/4" x 2-3/4" x 1/8")					
	30	35	41	47	53
Off-road	1500	1250	1070	940	830
Braked road	2080	1730	1490	1300	1160
Unbraked road	-	-	-	-	1730



A-Frame

	<i>Tongue length L, in</i>				
50 x 50 x 3 Equal Angle (approx 2" x 2" x 1/8")					
	30	35	41	47	53
Off-road	340	290	240	210	190
Braked road	470	400	340	300	260
Unbraked road	710	580	510	440	400
50 x 50 x 5 Equal Angle (approx 2" x 2" x 3/16")					
	30	35	41	47	53
Off-road	550	460	400	350	310
Braked road	770	640	550	480	430
Unbraked road	1160	970	830	730	640
50 x 25 x 3.0 Rectangular Hollow Section/Tube with 50 dimension vertical (approx 2" x 1" x 1/8")					
	30	35	41	47	53
Off-road	1140	950	800	710	630
Braked road	1700	1420	1210	1060	950
Unbraked road	-	-	-	-	-
50 x 50 x 3.0 Square Hollow Section/Tube (approx 2" x 2" x 1/8")					
	30	35	41	47	53
Off-road	1420	1190	1010	890	790
Braked road	1970	1650	1410	1230	1100
Unbraked road	-	-	-	1850	1650



Composite Tongue

	<i>Central-only Length L1 + Total Length L2, in</i>				
50 x 50 x 3.0 Square Hollow Section/Tube Central Tongue + 50 x 50 x 3 Equal Angle Diagonal Braces					
	20+30	24+35	28+41	31+47	35+53
Off-road	1050	870	750	650	580
Braked road	1450	1210	1050	910	800
Unbraked road	-	1830	1560	1370	1210
60 x 60 x 3.0 Square Hollow Section/Tube Central Tongue + 50 x 50 x 5 Equal Angle Diagonal Braces					
	20+30	24+35	28+41	31+47	35+53
Off-road	1610	1330	1150	1000	890
Braked road	2230	1850	1590	1390	1230
Unbraked road	-	-	-	-	-
70 x 70 x 3.0 Square Hollow Section/Tube Central Tongue + 50 x 25 x 3.0 Rectangular Hollow Section/Tube Diagonal Braces (50 dimension vertical)					
	20+30	24+35	28+41	31+47	35+53
Off-road	2250	1870	1600	1400	1250
Braked road	3120	2600	2230	1950	1730
Unbraked road	-	-	-	-	-

