

This Way Up © in Deluxe Worsted by Universal Yarn, Inc.

Free



Abbreviations

K – knit

K2tog – knit 2 together

P – purl

P2tog – purl 2 together

Ssk – slip, slip, knit – slip the first 2 singly stitches knit wise, knit through the back loop = left slant decrease

Sl2 tog-k1-p2sso – slip 2 stitches together knitwise, knit next stitch, pass both slipped stitches over the k1 = centered double decrease

Yo – yarn over needle

Border Pattern Stitch (multiple of 29 sts)

Row 1 (RS): K1 (2, 3, 4), *K1, YO, (K2, P2) 5x, K2, P1, K2, YO*; end K2 (3, 4, 5).

Row 2: P2 (3, 4, 5), *P2, P2tog, (P2, K2) 5x, P4*: end P1 (2, 3, 4).

Row 3: K1 (2, 3, 4), *K2, YO, (K2, P2) 5x, K1, K2tog, K1, YO, K1*; end K2 (3, 4, 5).

Row 4: P2 (3, 4, 5), *P3, P2tog, (K2, P2) 5x, P3*; end P1 (2, 3, 4)

Row 5: K1 (2, 3, 4), *K3, YO, (K2, P2) 4x, K2, P1, K2tog, K1, YO, K2*; end K2 (3, 4, 5).

Row 6: P2 (3, 4, 5), *P4, P2tog, (P2, K2) 4x, P6*; end P1 (2, 3, 4).

Row 7: K1 (2, 3, 4), *K4, YO, (K2, P2) 4x, K1, K2tog, K1, YO, K3*; end K2 (3, 4, 5).

Row 8: P2 (3, 4, 5), *P5, P2tog, (K2, P2) 4x, P5*; end P1 (2, 3, 4).

Row 9: K1 (2, 3, 4), *K5, YO, (K2, P2) 3x, K2, P1, K2tog, K1, YO, K4*; end K2 (3, 4, 5).

Row 10: P2 (3, 4, 5), *P6, P2tog, (P2, K2) 3x, P8*; end P1 (2, 3, 4)

Row 11: K1 (2, 3, 4), *k6, yo, (k2, p2) 3times, k1, k2tog, k1, yo, k5*; end K2 (3, 4, 5).

Row 12: P2 (3, 4, 5), *p7, p2 tog, (k2, p2) 3times, p7*; end P1 (2, 3, 4).

Row 13: K1 (2, 3, 4), *k7, yo, (k2, p2) 2times, k2, p1, k2 tog, k1, yo, k6*; end P1 (2, 3, 4).

Row 14: P2 (3, 4, 5), *p8, p2 tog, (p2, k2) 2times, p10*; end P1 (2, 3, 4).

Row 15: K1 (2, 3, 4), *k8, yo, (k2, p2) 2times, k1, k2 tog, k1, yo, k7*; end K2 (3, 4, 5).

Row 16: p2 (3, 4, 5), *p9, p2 tog, (k2, p2) 2times, p9*; end P1 (2, 3, 4).

Row 17: k1 (2, 3, 4), *k9, yo, k2, p2, k2, p1, k2 tog, k1, yo, k8*; end K2 (3, 4, 5).

Row 18: p2 (3, 4, 5), *p10, p2 tog, p2, k2, p12*; end P1 (2, 3, 4).

Row 19: k1 (2, 3, 4), *k10, yo, k2, p2, k1, k2tog, k1, yo, k9*; end P1 (2, 3, 4).

Row 20: p2 (3, 4, 5), *p11, p2 tog, k2, p13*; end P1 (2, 3, 4).

Row 21: k1 (2, 3, 4), *k11, yo, k2, p1, k2 tog, k1, yo, k10*; end K2 (3, 4, 5).

Row 22: p2 (3, 4, 5), *p12, p2 tog, p14*; end p1 (2, 3, 4).

Row 23: k1 (2, 3, 4), *k12, yo, k1, k2 tog, k1, yo, k11*; end k2 (3, 4, 5).

Advanced

Size

Small (Medium, Large, X-Large) to fit

Bust Sizes: 36 (38, 40, 42)''

Finished length: 22.5 (24, 24, 25.5)''

Materials

6 (7, 7, 8) skeins of Deluxe Worsted (100% Wool),
220yds/100g

Needles: US size 8/5mm straight and 16'' circular needles
or size to obtain gauge.

Gauge

16 sts and 24 rows over 4''/10 cm of St st

Knit. Relax. Smile. Repeat!

2007 © Universal Yarn Inc.

All rights reserved.

www.universalyarn.com

704-789-9276

This pattern may not be reproduced for business, trade or sale.

Front Panel Stitch

- Row 1:** Yo, k2, p2, k1, ssk, k5, yo, k1, yo, k5, k2 tog, k1, p2, k2, yo.
Row 2 and all even rows – Purl the purls, knit the knits.
Row 3: Yo, k2, p2, k1, ssk, k4, yo, k1, yo, k4, k2 tog, k1, p2, k2, yo.
Row 5: Yo, k2, p2, k1, ssk, k3, yo, k1, yo, k3, k2 tog, k1, p2, k2, yo.
Row 7: Yo, k2, p2, k1, ssk, k2, yo, k1, yo, k2, k2 tog, k1, p2, k2, yo.
Row 9: Yo, k2, p2, k1, ssk, k1, yo, k1, yo, k1, k2 tog, k1, p2, k2, yo.
Row 11: Yo, k2, p2, k1, ssk, yo, k1, yo, k2 tog, k1, p2, k2, yo.
Row 13: Yo, k2, p2, k2, sl2 tog-k1-p2sso, k2, p2, k2, yo.
Row 15: Yo, k2, p2, k1, sl2 tog-k1-p2sso, k1, p2, k2, yo.
Row 17: Yo, k2, p2, sl2 tog-k1-p2sso, p2, k2, yo.
Row 19: Yo, k2, p1, sl2 tog-k1-p2sso, p1, k2, yo.
Row 21: Yo, k2, sl2 tog-k1-p2sso, k2, yo.
Row 23: Yo, k1, sl2 tog-k1-p2sso, k1, yo.
Row 25: Yo, sl2 tog-k1-p2sso, yo.

Back

Cast on 81 (83, 85, 87) sts. Begin border pattern and work rows 1-24. On row 19 dec 1 st each end of the needle. Continue to dec 1 st each side every 9th row 3 (2, 2, 1) more times. When 24 pattern rows are completed, switch to st st and work until piece is 13 (14, 14, 15)" from cast on edge.
Armhole: Bind off 4 (5, 5, 6) sts at the beginning of the next two rows. Dec 1 st each side every other row 4 (4, 5, 5) times. Work until armhole is 8.5 (9, 9, 9.5)".
Shoulder Shaping: Bind off 5 sts at the beg. of the next 6 (6, 4, 4) rows, then 0 (0, 6, 6) sts at the beg of the next 2 rows. Bind off 26 (28, 28, 30) back neck sts.

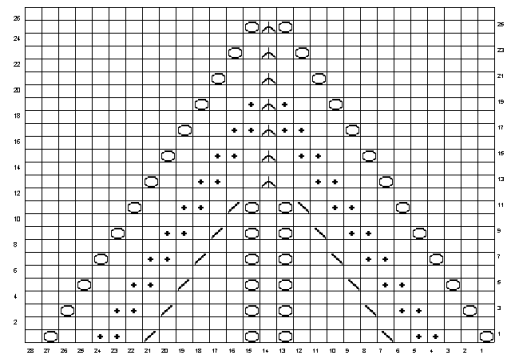
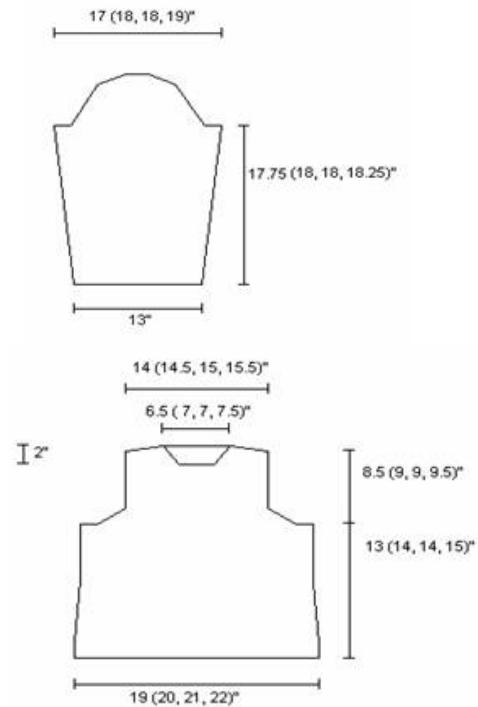
Front

Cast on 81 (83, 85, 87) sts. Work rows 1-24 of border pattern as for back, including side seam decreases. On next row, knit 41 (42, 43, 44) sts, work row 1 of front panel, knit to end of row. Continue to work the front panel as established, repeating rows 1-26 two more times. After the last repeat, work to 2 sts before the yo: k2 tog, yo, k1, yo, ssk, work to end. Repeat this every right side row to neckline. At the same time work all shaping as for back until armhole is 6.5 (7, 7, 7.5)".
Neckline: Work to center 16 (18, 18, 20) sts, attach another ball of yarn, bind off center 16 (18, 18, 20) sts, work to the end of the row. Working both sides at once, dec 1 st each neck edge every other row 5 times. When armhole is 8.5 (9, 9, 9.5)", bind off shoulders as for back.

Sleeves

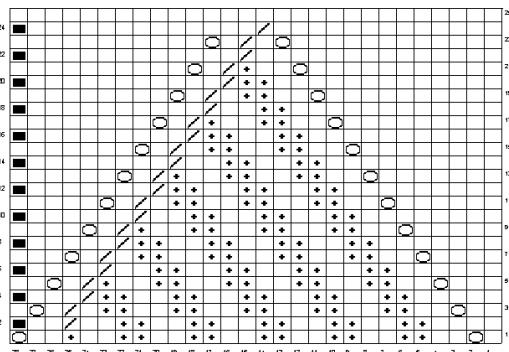
Cast on 53 sts. Begin border pattern by repeating between *s, end k1. At the same time begin inc 1 st each side every 12 (10, 10, 8) rows 6 (9, 9, 8) times, then every 14 (12, 12, 10) rows 2 (1, 1, 4) times.

Shape Cap: Bind off 7 (7, 8, 6) sts at the beginning of the next 2 rows. Dec 1 st each side every other row 10 (12, 13, 11) times, and 1 st each side every row 7 (5, 3, 9) times. Bind off 2 (3, 3, 3) sts at the beg of next 4 rows. Bind off remaining 13 sts.
Finishing: Sew shoulder seams. With circular needle pick up 68 (72, 72, 76) sts around neck edge. Work in k2, p2 rib for 1 1/2"; bind off loosely. Attach sleeves to sweater. Sew side and sleeve seams.



Front Panel

- Knit on right side, purl on wrong side
- Yarn over
- Knit 2 tog on right side, purl 2 tog on wrong side
- No stitch
- Slip 2 tog, k1, pass 2 slip sts over
- Slip, slip, knit
- Purl on right side, knit on wrong side



Border Pattern

Knit. Relax. Smile. Repeat!

2007 © Universal Yarn Inc.
 All rights reserved.
 www.universalyarn.com
 704-789-9276

This pattern may not be reproduced for business, trade or sale.