

# Pedestrian underpass

SEPTEMBER 2011

The Perth City Link Rail Alliance will sink the Fremantle Line from William Street to Lake/King Streets as the first stage of the Perth City Link project. The rail project will be completed in the second quarter of 2014.

As part of the rail project, a new pedestrian underpass to connect all platforms to Perth Underground will be constructed.

When completed, the new pedestrian underpass will greatly improve connections between services by:

- saving passengers up to 45 seconds in travel time between train services
- providing the best access for all passengers, particularly those with accessibility difficulties, through lifts, stairs and escalators
- maintaining Perth Station's open ambience and natural light
- improving the view of the Horseshoe Bridge from within Perth Station

## The construction program

To continue train services and move passengers easily around Perth Station, the Perth City Link Rail Alliance will build the pedestrian underpass in stages.

**Stage one** is the section connecting Platform 5 to Platform 6/7. This stage will run from late 2011 to mid-2012.

**Stage two** is the section connecting Perth Station to Perth Underground. This complex section will go under the heritage-listed Perth Station building and link up with Perth Underground.



*Proposed entrance to the new pedestrian underpass from Perth Underground.*

This stage runs from mid-2012 to mid-2013.

**Stage three** is the section connecting Platform 6/7 to Platform 9. This stage will run from late 2012 to mid-2013.

## The final design

Parallel with the Horseshoe Bridge (see map on back), the seven metre wide and three metre high pedestrian underpass will become a key thoroughfare for passengers connecting between services and Perth Underground.

The underpass's design maximises natural lighting and ventilation through skylights placed at key intervals on the platforms and Wellington Street forecourt in front of Perth Station.

On the platform level, the sculptural skylights deliberately contrast the heritage Horseshoe Bridge and Perth Station building while adding a contemporary layer to the area's history.

In 2031, approximately 22,600 passengers a day will transfer

between Perth Station platforms and Perth Underground.

## Contact information

**InfoLine** 13 62 13

**Email** [railinfo@pclrail.com.au](mailto:railinfo@pclrail.com.au)

**Visit** [www.perthcitylink.wa.gov.au](http://www.perthcitylink.wa.gov.au)

Thank you for your cooperation and patience as we work to improve Perth Station.

From late 2011 until mid-2014, the Perth City Link Rail Alliance will deliver the project to sink the Fremantle Line from William Street to Lake/King Streets as the first step of the Perth City Link project.

The project will reconnect Northbridge and the CBD for the first time in more than 100 years. Work also includes:

- building a new pedestrian underpass from Perth Underground to Perth Station
- increasing platform capacity to cater for special events



**perth city link**  
RAIL ALLIANCE



**Perth City Link**



Australian Government  
Nation Building Program



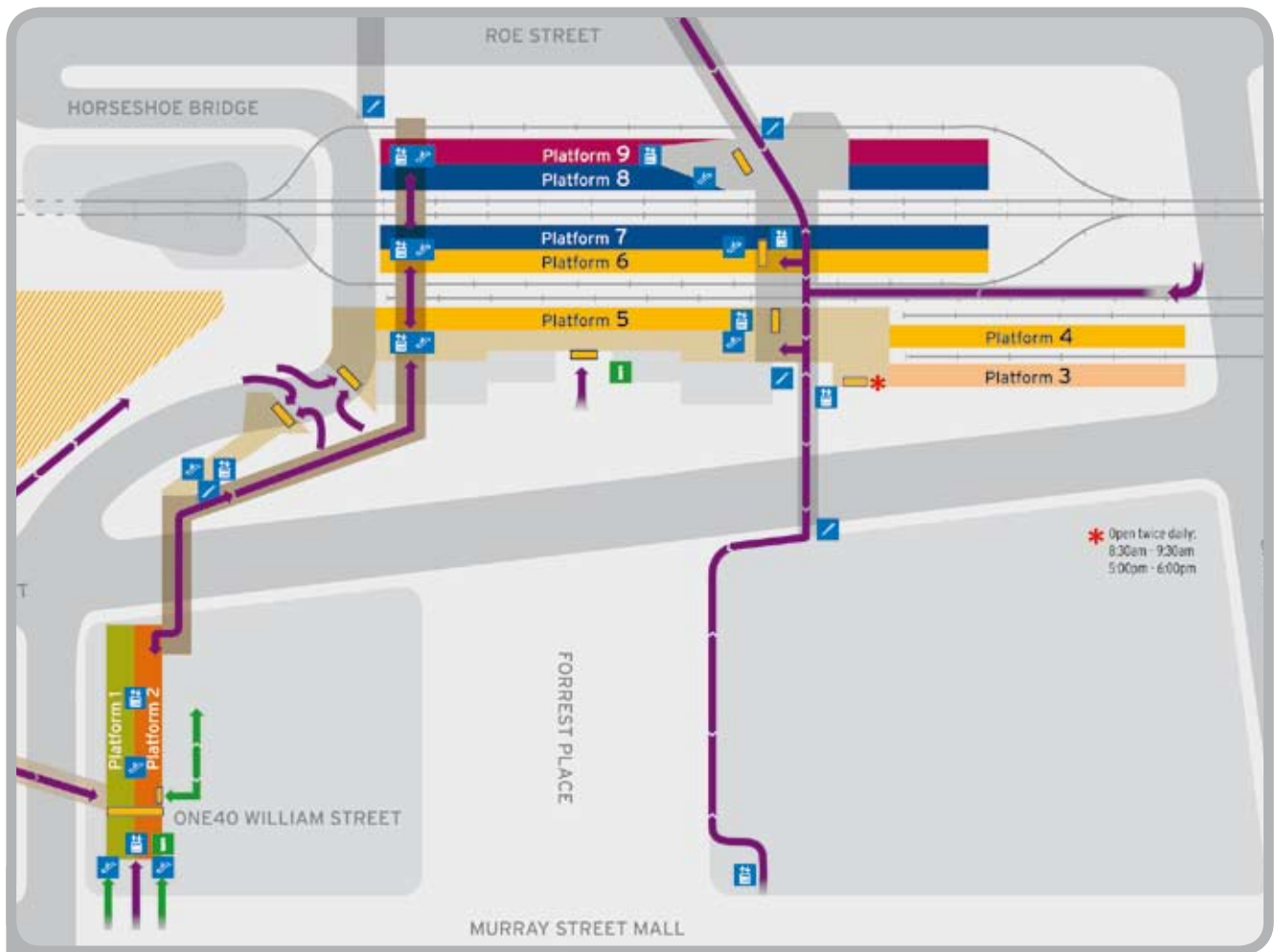
Public Transport  
Authority

**epra**

REVITALISING URBAN PLACES



CITY of PERTH



Perth Station layout 2014 with new pedestrian underpass.

## Frequently asked questions

### *When will the pedestrian underpass be opened?*

The pedestrian underpass will open in late 2013.

### *If you're constructing the pedestrian underpass in stages, why don't you open it in stages?*

Though the underpass structure is being constructed in stages, areas will continue to be under construction during the fit-out stage. To keep passengers safe during this work, the pedestrian underpass will only be opened when everything, including the fit-out, is completed.

### *Why an underpass and not an overpass?*

During the master planning, the Public Transport Authority evaluated a number of options, including leaving the existing arrangement, and overpasses or underpasses in various locations. The study found an underpass connecting all platforms to Perth Underground would offer the best time benefit for passengers.

### *Can you access the pedestrian underpass from street level?*

Yes, from Wellington Street, from two entries under the Horseshoe Bridge.

### *Will the pedestrian underpass connect through to Roe Street?*

The underpass will have an emergency exit to Roe Street. The exit can be opened as a passenger exit in the future when there is a demand for the connection after Roe Street has been upgraded as part of the broader Perth City Link development.

### *Will the pedestrian underpass connect through to the new underground Wellington Street Bus Station?*

There are no plans to connect the new underground Wellington Street Bus Station to the pedestrian underpass. Creating this connection would require it to be two-storeys below street level. Also, by bringing passengers up to ground level they can enjoy the newly-developed public square when it is completed.

### *If I use the underground Wellington Street Bus Station and want to connect to a train service, will I be charged twice when I exit one station and enter the other?*

No. Just like Smartrider operates now between bus and train services, passengers will have 15 minutes to connect between the underground Wellington Street Bus Station and Perth Station before being charged for a new ride.