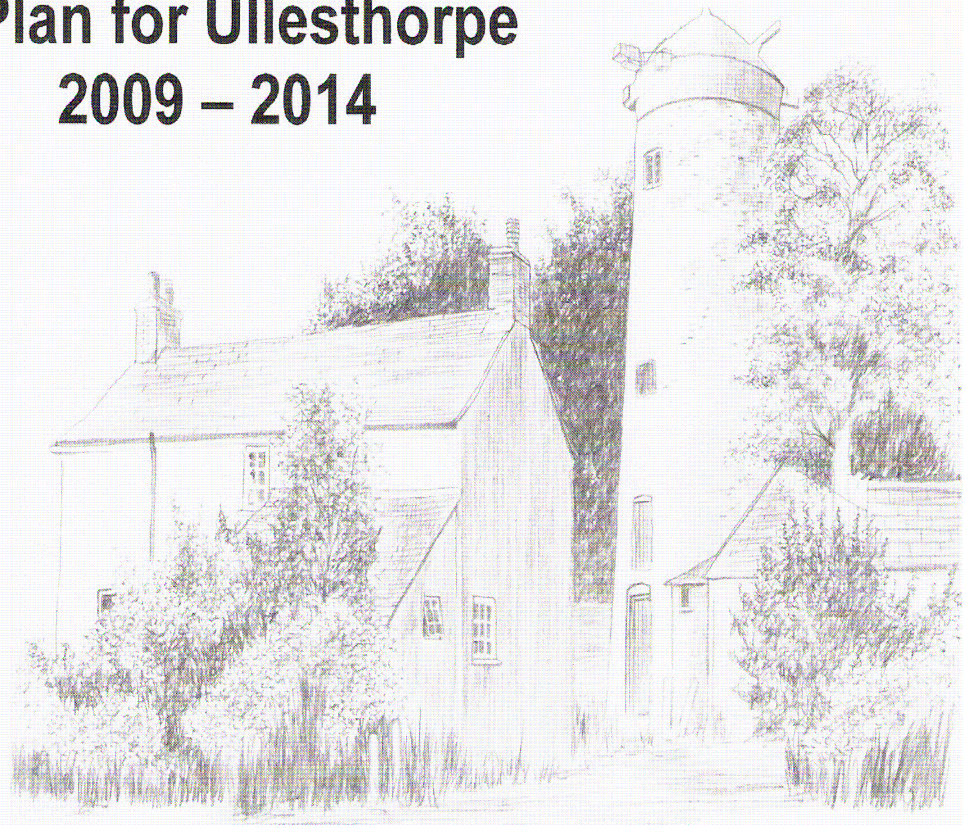
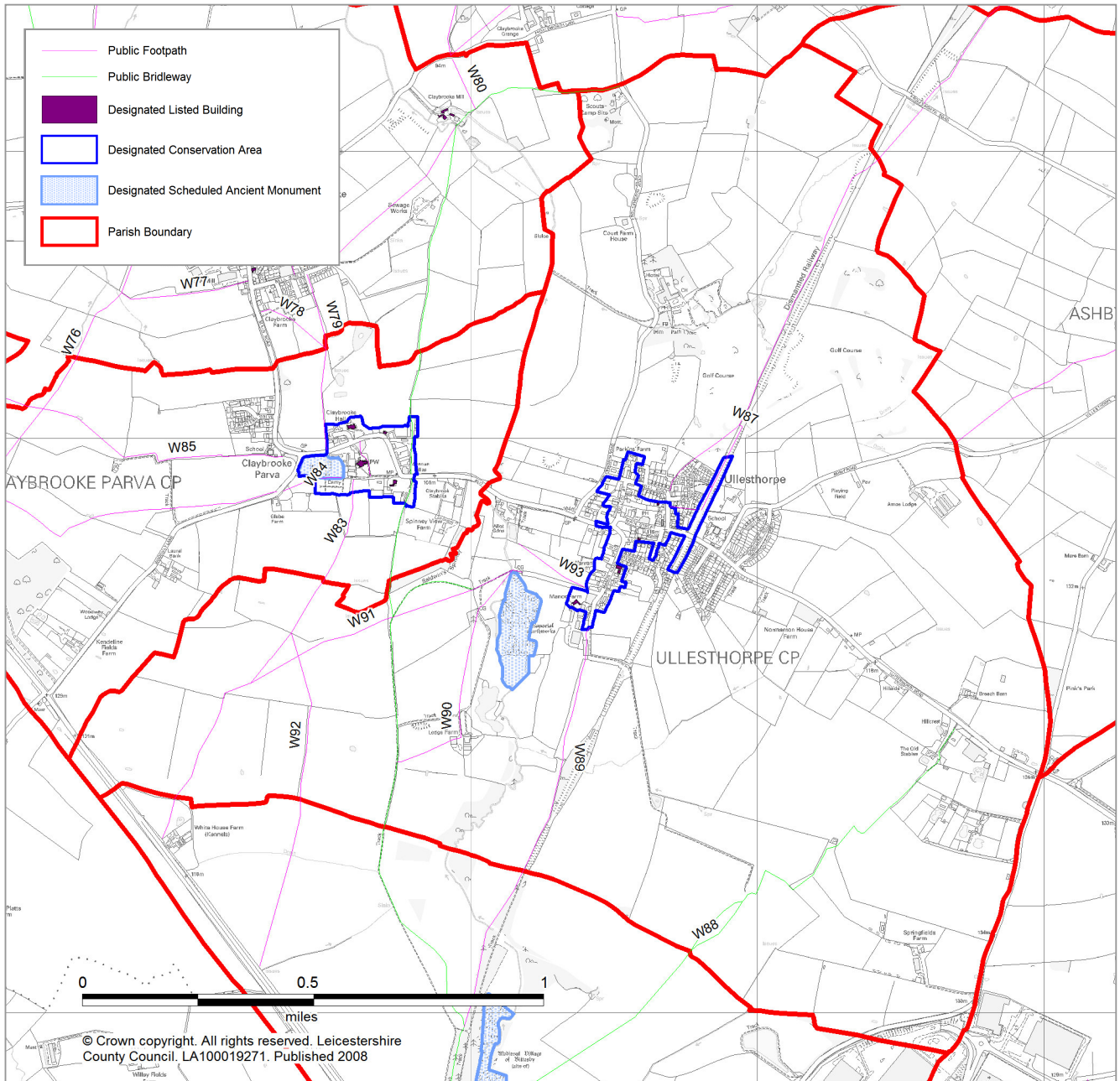


A Plan for Ullesthorpe 2009 – 2014



A Map of the Parish of Ullesthorpe



Contents

Introduction.....	4
Main Outcomes of the Plan	7
A Brief History of Ullesthorpe.....	8
Ullesthorpe - Key Dates	11
A Road Map of Ullesthorpe	12
The Views of Ullesthorpe Residents	
Gathering the Views.....	13
Outcomes of the Consultations.....	14
Development of the Action Plan.....	19
Action Plan	
1. Future Development of the Village.....	20
2. Village Post Office and Shop.....	21
3. Activities for young people.....	21
4. Appearance of the Village.....	23
5. Safety.....	25
6. Health and Community Care.....	27
7. Village Green	28
8. Local Employment.....	28
9. Information about Ullesthorpe.....	28
10. Transport.....	30
11. Village Activities.....	30
Acknowledgements.....	31

A full copy of this Plan together with all associated documents can be viewed at:

www.leicestershirevillages.com/ullesthorpe/parishplan

Introduction



About Ullesthorpe

Ullesthorpe village is quietly tucked away in the rolling countryside of central England, in rural Leicestershire. It is located in the South Western part of the County almost central to the M1, M69 and M6 triangle of Motorways that criss-cross the region and is about 4 miles from Lutterworth, 7 miles from Hinckley and 10 miles from Rugby.

The village has been in existence for over a thousand years and has been best known for its cattle markets held at the time when the Leicester to Rugby railway line had a station in the village between 1850 and 1964.

Today approximately 950 residents inhabit some 400 properties in the village.

Children in the village are well served by Ullesthorpe Pre-School, the Church of England Primary School and the Kids Klub, which between them provide education from 2½ years to 11 years and are centrally located within the village.

Adults too have access to a good range of services including a Doctors' Surgery, Post Office and shop, two pubs and a number of other locally based businesses. The Garden Centre and the Hotel and Golf Club attract visitors from a wide radius.

Why a Plan for Ullesthorpe?

The Plan is a bottom up community-driven consultation exercise that results in the preparation of a report or plan that addresses all of the issues of concern to the community together in one exercise. It encompasses issues that relate to life in the community from cradle to grave and is relevant to everyone young and old alike. This comprehensive report and action plan will enable the community and service providers together to prepare for the future, based on information gained through the surveys and consultation processes that have taken place over the last 18 months.

When was the Plan Developed?

On the 25th April 2007 The Rural Community Council (Leicestershire and Rutland) held a meeting in Ullesthorpe village hall in order to publicise and encourage residents to take forward the idea of developing a Parish Plan for Ullesthorpe.

By July 2007 the Ullesthorpe Parish Plan Steering group had been formed with a small committee of members.

In September 2007 an initial questionnaire was sent to all households enquiring after issues that affected village residents. Results indicated that many residents were very happy living in the village but there were a few concerns that needed to be addressed.

On Sunday 16th March 2008 an exhibition and open day event held in the village hall sought to explore the issues and concerns in greater depth. Further consultations and enquiries regarding the issues raised have resulted in this plan.

Who has been consulted on this Plan?

Formal consultations have taken place with the organisations listed below:

- Leicestershire County Council
- Harborough District Council
- Leicestershire Constabulary
- Voluntary Action South Leicestershire
- NHS Leicestershire County and Rutland
- Leicestershire Rural Housing Enabler
- District and County Councillor Rosita Page

What will the Plan be used for?

The plan will be used for the following purposes:

- As a blueprint for the village for the next 5+ years
- To set an agenda for changes consistent with the outcome of the consultations
- To establish a benchmark of activities/services/issues from which to measure changes
- To act as evidence to influence decisions that may affect village life made by the Parish, District and County Councils and other formal bodies
- To provide feedback to residents on information gathered and proposed actions
- To encourage and promote new and existing community activities
- To provide evidence of the need for funding for projects



Main Outcomes of the Plan

In 5 years time residents would like Ullesthorpe to still be a friendly, attractive village, where people feel safe. They would like to see the existing facilities, services and amenities retained, including the village shop and Post Office, Primary School, Pre-School, Kids Klub, Doctor's surgery, 2 pubs and other local businesses with only a few new houses and an active social life for all ages within the village.

In summary the findings were:

Future development of the village

In the main, people want any new housing to be within the current village boundaries and in keeping with the current housing.

Village Shop and Post Office

Everyone sees it as essential that the village shop and Post Office remain open.

Activities for young people

There is a demand for more activities for young people.

Appearance of the village

People would like to see litter, graffiti, dog mess and village eyesores cleaned up.

Safety

There needs to be improved road safety and more action taken to stop anti-social behaviour.

Health and Community Care

The current services in the village are appreciated and need to be maintained.

Village green

Some people would like to have a village green as a focal point in the village.

Local employment

There was some support for increasing the number of small businesses in the village.

Information about Ullesthorpe

There needs to be better communication about village activities and services.

Transport

Some people would like more buses to local towns.

Village activities

There was a general interest in having more activities for adults in the village.

An action plan has been prepared to ensure that residents' views are put into practice.

A Brief History of Ullesthorpe



A large number of flint tools and flakes have been found in and around Ullesthorpe that indicate there was occupation here throughout the Prehistoric Period. The Corieltavi tribe occupied this area in the Iron Age and two aerial photographs of fields on the outskirts of the village show farmsteads of this period.

The Romans arrived in the 1st Century AD and there is evidence of Roman villas in Bittesby and Claybrooke. Nearby are the Roman roads of Watling Street and The Fosse Way, plus the large settlements of Tripontium and High Cross (Venonae). Roman pottery, roof tiles and coins have been found in Ullesthorpe. When the breakdown of Roman rule and institutions occurred around 410 AD a variety of settlers arrived from the Continent and Scandinavia, this time is called the Saxon Period. There were several periods of Saxon control of the area and a Saxon loom weight has been found near Bittesby but a major influence on Ullesthorpe was from the Danes who invaded the country around 870 AD. The name itself is derived from old Scandinavian and means the outlying farmstead or settlement of a man called Ulfr. The limit of Dane law was approximately the line of Watling Street, hence the names of other villages in the area that are derived from the Scandinavian language.

Following the invasion in 1066 by the Normans, William Duke of Normandy became King of England and most of the lands were soon granted to his followers. In 1086 he put in hand a survey called the Domesday Book that recorded the economic worth of the nation and who held the land. Ulestorp Mill was valued at 16 pence and Ulestorp was valued at 30 shillings. Bittesby (Bichesbie) was valued at 40 shillings! The Mill was the only one listed in the survey for the whole of the Lutterworth area.

Around the thirteenth century there was a manor house on the site of the present Manor Farm. The substantial earthworks still showing in the field below Manor Farm are the remains of fish ponds and garden features associated with the manor house.

By 1190 the village name had been changed to Olestorp and then changed again to Olvestorp in 1278. Now Ullesthorpe.

For several centuries the main employment in the village related to agriculture. The rich clay soils have lent themselves to grazing cattle, while the lighter soils have been suitable for sheep. Food products produced over the years have included Oats, Wheat, Barley, Turnips and Rape seed.

From around 1700, the cottage industry in the village centred on woollen products, employing at one time 160 weavers in 126 properties. During the mid-late 1700s however, with the introduction of the industrial revolution, factories were built in the major towns and cities and the home based woollen industry slowly died away. Residents were forced to find alternative employment on the land, in factories or by joining the Army to fight the Napoleonic war. Times were tough. A workhouse was built in the village in 1789 and it stood on the grounds of the present garage on Claybrooke Road. It was in use for almost 50 years.



In about 1800 the building of the 'Subscription' Mill for milling corn brought a little more employment to the village for almost a hundred years before lightning struck its sails and production ceased in the late 1890s.

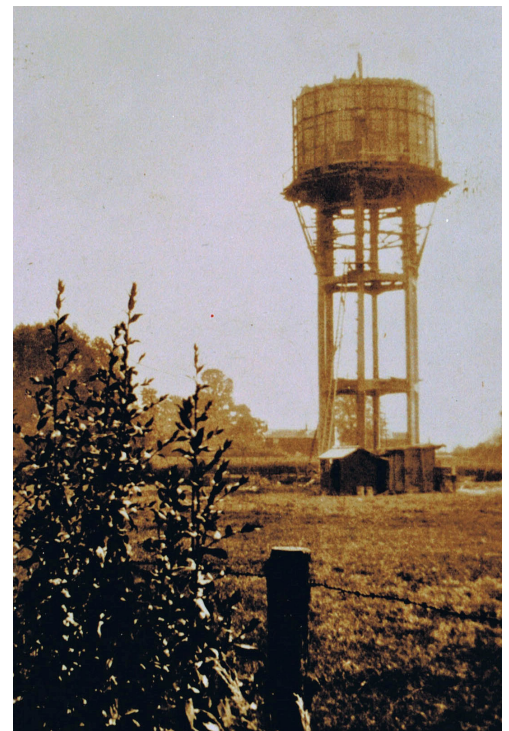
In 1801 the village population had risen to 494 and by 1821 it was up to 600.

1840 heralded the opening of the new railway line from Rugby to Leicester, bringing over 120 years of employment and real prosperity to the village. After the line had opened Ullesthorpe became a focal point for weekly cattle markets attracting buyers and sellers from miles around. Following the closure of the railway line in 1964 the cattle market soon declined and ceased trading altogether in 1967.

In 1981 the records show that the population had risen to 861 and by 1989 to 978.

The latter half of the twentieth century has seen improvements to village amenities and services with the establishment of mains sewerage, gas and water, a new village hall, new school and playing fields.

The last census in 2001 showed that 849 people were resident in Ullesthorpe. Few work on the land or in the village now with the majority travelling to nearby towns and cities for employment.



Ullesthorpe - Key Dates

- 917+ Village established by Danish Settler Ulfr Spot and named Ulestorp
- 1080 **17 village households**
- 1190 Name changed to Olestorp
- 1278 Name changed to Olvestorp
- 1300s Black Death
- 1563 **21 village households**
- 1600s Great Plague
- 1600+ Gore and Poole families become significant landowners. Gore males become Lords of the Manor
- 1690 **52 village households**
- 1700+ Considerable village trade in Woollen Yarn, Stockings and 'Stuff'
- 1750+ Start of Industrial revolution with spinning jenny, spinning frame, Compton Mule and steam engines being established in factories for greater production
- 1762+ Construction of local roads and bridges
- 1767 First house built on site of Ullesthorpe Court Hotel
- 1789 'House of Industry' workhouse built on site of current garage
- 1800 Ullesthorpe 'Subscription' corn Mill built and operational
- 1800+ Daily stagecoach through village on London - Chester run
- 1804 **94 village population**
- 1806 Congregational Church founded
- 1809 - 1812 Failed harvest
- 1821 - 1861 **Village population static at just under 600**
- 1840 Rugby - Leicester railway line opened through village
- 1850+ Regular cattle markets established in the village bringing considerable prosperity
- 1851 **592 village population**
- 1855 First village school built in Mill Road; extended in 1858
- 1890s Mill sails struck by lightning and ceased production
- 1891 **427 Village population, living in 146 households**
- 1904 First cattle market records still in existence
- 1923 Village 'Memorial' Hall established using World War 1 ex-army hut
- 1925 Scout camp established
- 1931 Electricity introduced into the village
- 1938 50,000 gallon water tank erected in field opposite the Mill
- 1950 Mains water first piped into village
- 1951 **607 Village population**
- 1954 Stevens Close built
- 1957 Mains sewerage introduced; Village Hall replaced
- 1962 South Avenue built
- 1964 Railway closed by Lord Beeching
- 1967 Cattle market ceased trading
- 1972 New school built in present position
- 1973 Playing fields established
- 1974 Village Hall extended
- 1981 **861 village population**
- 1984 Orchard Walk built
- 1987 Village Hall car park tarmaced
- 1989 **978 village population**
- 1990 Gas piped into village
- 1994 Water tank 'blown up' and removed
- 2001 **849 Village population**
- 2003+ New housing development at Fairway Meadows
- 2007 'A Plan for Ullesthorpe' Committee formed
- 2009 'A Plan for Ullesthorpe' launched

The Views of Ullesthorpe Residents

Gathering the Views

Introduction

It is key to the success of this Plan that the residents' opinions are fully represented. To ensure that everyone had the opportunity to share their views on the future plans for the village, the following were carried out:

- An initial questionnaire delivered to every residence in the parish
- An event at the Village Hall including a more detailed questionnaire
- Access to previous consultations with Young People in the village
- A questionnaire specific to businesses in the village
- Regular interaction with Parish and District Councillors

Initial Questionnaire

The purpose of the initial questionnaire was to identify the key issues and concerns for Ullesthorpe residents. The questionnaire was in two parts; residents were first asked to identify their 3 main areas of concern and secondly were invited to expand on these themes through comments. 440 questionnaires were returned.

Ullesthorpe: Past, Present and Future Event

An event was held in the Village Hall in March 2008 including an exhibition of historic photographs of the village, representation of all the clubs/societies active within the village and a photography competition and raffle. Over 200 residents attended this event and before leaving they were interviewed and asked for their views by completing a questionnaire and/or by identifying key issues and placing their location on a map of the village. 89 questionnaires were collected and 101 comments were posted on the map. A further 18 comments were collected from the 'Kid's Wall', specifically designed to get the views of the under 16s.



Survey of Young People

The Playing Fields Association had carried out a survey in 2006 and consulted with the Ullesthorpe Primary School Pupils' Council in 2007.



Business Questionnaire

13 businesses that are based in Ullesthorpe and deal directly with the local population were identified and asked to complete a dedicated questionnaire in order to identify their key concerns regarding the future of the village.

Health and Education

Ullesthorpe Doctor's Surgery, NHS Leicestershire County and Rutland and Ullesthorpe Primary School were asked for their views about the future of the village and their own organisations.

Outcomes of the Consultations

Initial Questionnaire

The key concerns highlighted in the initial questionnaire were, in order of priority:-

- Keep the village shop/ Post Office open (identified by 90.6% of those responding)
- No more major building expansion in the village (55.5%)
- More activities for the young (28.0%)
- Preserve the green environment (24.9%)
- Improve security and reduce antisocial behaviour in the village (24.5%)
- Improve road safety (21.2%)
- Provide more recycling facilities (15.8%)
- Provide a village green (14.6%)
- Improve public transport (13.2%)
- More community activities (6.3%)
- Village website/Newsletter (2.5%)

No significant variation in the responses was identified by age, sex or address within the village.



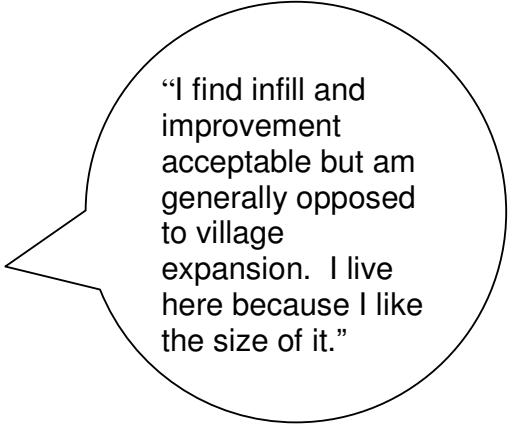
Subsequent Consultations

The following sections describe the responses received on the full range of issues and provide the evidence to substantiate the proposed action plan.


Future Development of the Village

In the initial survey more than 50% of those who responded highlighted major expansion of the village as a key concern. However on further consultation it was established that although the majority of residents oppose large-scale expansion of the village they would accept in-fill, particularly if the new buildings were in character with the rest of the village. A minority of respondents highlighted low-cost housing whilst others asked for upmarket developments to 'tidy up sad areas'. For some respondents any further development was unacceptable.

Views on the benefit of Magna Park to the village were mixed with general opposition to any further development in the direction of Ullesthorpe.



"I find infill and improvement acceptable but am generally opposed to village expansion. I live here because I like the size of it."




"The Post Office/shop is the most important feature of the village. I feel that to lose such facilities would be the most retrograde step in the community."

Village Post Office and Shop

Keeping the Post Office and shop has been identified as vital to the future viability of the village. In the initial questionnaire more than 90% of the returned questionnaires identified this issue as a priority.

Activities for Young People

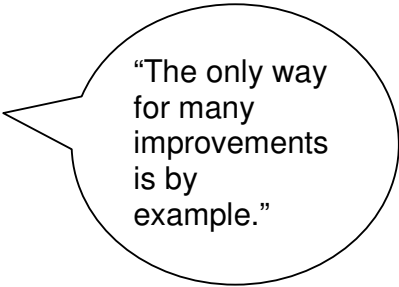
Adults overwhelmingly accepted that there weren't sufficient activities available for youths and children in the village. Suggestions for activities include a Youth Club, sports facilities and a drama club. Young people would like to see the playing field made safer, cleaner and more attractive. Specifically young people would like more sports equipment for the 5s to teens including football, basketball and skateboarding. Improving the play equipment for the under 5s is also important. A minority expressed the opinion that the youths in the village wouldn't respond to any initiatives taken.



"Community activities for young and old are to be encouraged."

Appearance of the Village

There was general concern about the tidiness of the village with litter, graffiti and dog mess highlighted as key issues. Suggestions for improvements included more litter and 'dog poo' bins and a monthly litter-pick event.



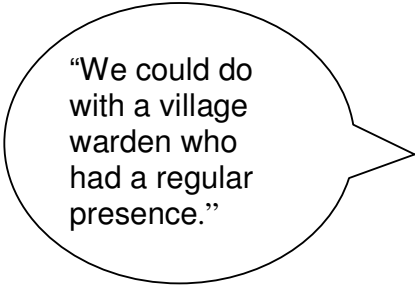
"The only way for many improvements is by example."

The Site of the former Crown Inn was identified as a current eyesore.

Positive ideas to improve the appearance of the village included having regular litter picking and graffiti removal, either through paid workers or volunteers. One suggestion was to plant a screen of trees to improve the view of the village when approaching from the Lutterworth direction.

Safety

Safety issues were split into two main areas – anti-social behaviour and traffic-related.




"We could do with a village warden who had a regular presence."

Residents were concerned about the amount of graffiti and vandalism in the village. Several comments were received asking for a more visible presence from the Community Police Officers. One business at the edge of the Parish was concerned that they had never had contact with the local Police calling at their premises.

The Neighbourhood Watch Scheme within the village appears to be dormant. Revitalisation of this scheme may contribute to improving security.

The two main issues with road safety concerned traffic speed and parking. There is a general perception that vehicles travel too fast through the village and various traffic calming measures were suggested. These included speed checks during busy periods, speed bumps and a Zebra Crossing.

Parking in Main Street, Mill Road and near the School was identified as a local issue. Within Mill Road, parking at the junction with College Street is particularly dangerous when vehicles are emerging from College Street. Parking near the junction of Mill Road and Main Street is seen as an issue that should be addressed.




"Mill Road needs some form of traffic calming due to the speed many vehicles travel at up and down this road."

Concern was expressed about cars parked outside the school during the morning and evening periods. Reduced visibility coupled with the speed of passing traffic present a hazard to children arriving and departing from the school.

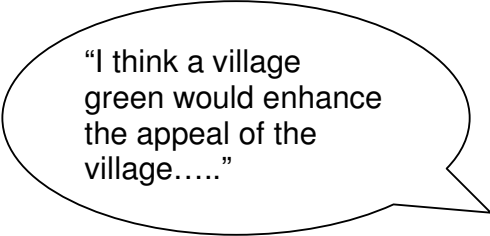
Health and Community Care

Residents are satisfied with and appreciative of the health facilities in the village. Concern was expressed that these could be reduced in the future as a result of Government policy.



“As good as anywhere I have had experience of.”

The local Cottage Hospital at Lutterworth was identified as a benefit to residents and any reduction of the facilities should be opposed.



“I think a village green would enhance the appeal of the village.....”


Village Green

A significant number of residents felt that the village did not have a central focal point and would be enhanced by a village green. Opinion was divided for the possible location of a green with the old Crown Inn site, the former railway line, the Chequers Country Inn car park and Fairway Meadows all being


suggested.

Local Employment

The village currently has several local businesses within the Parish boundaries, many of which employ local residents. Increased local employment was not seen as a big issue, presumably as many residents commute to jobs in neighbouring towns. There was some support for increasing the number of small businesses and encouraging working from home. The survey of local businesses did not identify any major issues.



“Support the businesses that want to bring employment and support the local community.”



“Would like to see every village organisation use the website and update it regularly.”

Information about Ullesthorpe

It was apparent that, although there are many clubs/activities in the village, residents are not fully aware of these opportunities. Fewer than 50% of the questionnaires completed at the Ullesthorpe Past, Present and Future event reported that residents were aware of the **leicestershirevillages.com** website. There is a willingness to get involved in village activities. Information is therefore needed on the website and should also be displayed on village notice boards.

Transport

Attitudes towards public transport to and from the village are mixed. Many residents rely on their own vehicles and have no need for enhanced public services. However, those residents that use public transport highlighted the need for improved services to nearby towns – Leicester, Rugby, Hinckley and Lutterworth. It is recognised that the operating companies need to be convinced that more frequent services would be profitable before they will introduce improvements.

“If a better bus service existed I would be more inclined to use it.”

A number of residents raised the issue of a lack of cycle tracks and footpaths out of the village. In particular footpaths to Ullesthorpe Garden Centre, Ullesthorpe Court and Ashby Parva would be welcomed.

Village Activities

Many residents asked for more village activities, particularly quizzes and dancing, musical, sporting and social events. Some of these activities are currently available but the publicity could be improved (see information about Ullesthorpe section).



Development of the Action Plan

Introduction

Following an analysis of the responses from the consultation exercise the general impression was that residents were generally content with life in Ullesthorpe. However some areas were identified where improvements could be made.

An initial list of issues was compiled and discussed with representatives of the Parish Council, Harborough District Council and Leicestershire County Council. From these discussions the issues were developed into a list of actions with a facilitator identified to take ownership of each one. Also identified were the possible other partners for each action and an estimate of resources and timescale required to achieve the outcome. The draft action plan was also reviewed by Leicestershire and Rutland Rural Community Council.

Formal consultation took place during December 2008 with the following bodies before finalising the following action plan:

- Leicestershire County Council
- Harborough District Council
- Leicestershire Constabulary
- Voluntary Action South Leicestershire
- NHS Leicestershire County and Rutland
- Rural Housing Enabler
- District and County Councillor Rosita Page

It is recognised that some of the issues may have been raised previously and, that it may be possible to tackle the issues in ways other than those suggested. However the purpose of the Plan is to reflect the views of the people of Ullesthorpe and this is what the action plan aims to do.



Action Plan

Action	How it will be tackled	Facilitator	Partners	Timescale	Priority	Resource implications
1. Future Development of the Village						
1.1 Ensure that future building is within the current village boundaries.	Village residents to oppose all planning proposals that are currently outside of the village boundaries, by formally objecting to Harborough District Council.	Village residents to object individually	Parish Council, Harborough District Council, District Councillor	Ongoing	High	None
1.2 Ensure that infill housing is in keeping with the character of the village.	Village residents to oppose all planning proposals that are not in keeping with the character of the village.	Village residents to object individually	Parish Council, Harborough District Council, District Councillor	Ongoing	High	None
1.3 Encourage affordable housing.	Parish Council to meet with the Rural Housing Enabler to discuss possibilities.	Parish Council	Rural Housing Enabler, Harborough District Council, District Councillor, Village residents	Already started	Low	None
1.4 Ensure that Magna Park does not encroach any nearer to Ullesthorpe.	All proposals for further development at Magna Park to be closely examined to ensure that there is no further development towards Ullesthorpe.	Village residents to object individually	Parish Council, Harborough District Council, District Councillor, Regional Development Agency	Ongoing	Medium	None

Action	How it will be tackled	Facilitator	Partners	Timescale	Priority	Resource implications
2. Village Post Office and Shop						
2.1 Maintain/increase the customer base to ensure viability.	Residents to recognise the need to use and support the facility as much as possible.	Village residents	Owners of the Post Office and shop	Ongoing	High	None
2.2 Ensure that the Post Office remains open.	Action to be determined should closure be proposed.	Owners of the Post Office and Shop	Parish Council, Customers of the Post Office and shop	When/if appropriate	High	Minimal - possibly time and stationery costs
3. Activities for young people						
3.1 Promote Youth Services in the village.	Parish Council to discuss the possibilities with the Youth Service and make provision as appropriate.	Parish Council	Harborough District Council, Leicestershire County Council, Ullesthorpe Playing Fields Association	Started July 2008	High	Cost of Youth Worker – approx £3,000 pa - plus rental costs of Village Hall/Playing Field Pavilion and equipment costs. Provided by Parish Council and through grant applications.

Action	How it will be tackled	Facilitator	Partners	Timescale	Priority	Resource implications
3.2 Encourage young people to express their views about their needs in the village.	Consider the setting up of a Youth Council (or similar) to give young people a voice in the village.	Youth Workers	Young village residents and their parents, Parish Council, Harborough District Council, Leicestershire County Council	December 2009	High	Minimal
3.3 Take a more positive approach to tackling anti-social behaviour in the village.	By engaging people in the future plans of the village.	Parish Council	Youth Workers, Leicestershire Constabulary, Young village residents and their parents, Harborough District Council, Leicestershire County Council	Immediate	High	Time consuming but minimal expense
3.4 Development of the playing field to make it more attractive and safe for young people.	The Ullesthorpe Playing Field Association Committee to build its membership and support within the village. To ensure that the playing field is kept tidy and litter free. To improve the environment by adding paths, trees/shrubs, benches, etc. To extend the range of equipment and activities at the playing field.	Ullesthorpe Playing Field Association Committee	Village residents – particularly parents and young people. Parish Council, Harborough District Council, Leicestershire County Council	Ongoing	High	Ongoing support from the Parish Council and applications for grants e.g. Harborough District Council, Leicestershire County Council.

Action	How it will be tackled	Facilitator	Partners	Timescale	Priority	Resource implications
4. Appearance of the Village						
4.1 Clean up the site of the former Crown Inn.	Continue to exert pressure upon the current owners of the site.	Parish Council	Harborough District Council, Village residents	Ongoing	Medium	Cost of clearing and screening the site
4.2 Ensure that unused sites do not become eyesores e.g. "The Bank ".	Ask the owners to keep their sites tidy.	Parish Council	Harborough District Council, Village residents	When appropriate	Low	Cost of tidying the site
4.3 Increase the number of dog poo and litter bins.	<p>Parish Council to increase the number of bins and arrange for regular emptying. Areas where bins are needed include:</p> <ul style="list-style-type: none"> • Outside the Butchers/Doctors' Surgery (on the bend) • On Mill Road footpath towards the Golf Course • Along the new railway line walk • On Goodacre Road • In the Orchard Walk parking area • Opposite 'La Cabana' on Claybrooke Road • On the corner of Station Road/The Dell 	Parish Council	Harborough District Council, Leicestershire County Council	Already actioned	Medium	Cost of new bins and regular emptying

Action	How it will be tackled	Facilitator	Partners	Timescale	Priority	Resource implications
4.4 Removal of graffiti from around the village.	Recruit local volunteers who are willing to remove the graffiti as soon as possible after the event.	Parish Council	Village residents, Harborough District Council, Leicestershire Constabulary	Already actioned and ongoing	Medium	Cost of graffiti removal gel and cloths
4.5 Plant more trees particularly at the Lutterworth entrance to the village.	Tree Warden to use trees available from Leicestershire County Council if land owners agree.	Tree Warden	Leicestershire County Council, land owners	When trees become available	Low	Cost of planting and maintenance
4.6 Ensure that the village appears tidy and attractive.	<ul style="list-style-type: none"> Keep grass verges in the village tidy on a regular basis Plant more flowers in the 'green' areas Introduce regular footpath/road sweeping and weed control in public areas Plant a line of trees to screen the Eastern limit of the village on both sides of Lutterworth Road 	<p>Leicestershire County Council</p> <p>Parish Council</p> <p>Harborough District Council</p> <p>Tree Warden</p>	<p>Parish Council, Harborough District Council</p> <p>Parish Council</p> <p>Leicestershire County Council, land owners</p>	Ongoing	Medium	Cost of regular cutting, sweeping, weeding, the provision of new trees, plants and bulbs and their maintenance.

Action	How it will be tackled	Facilitator	Partners	Timescale	Priority	Resource implications
5. Safety						
5.1 There is a need for the Police and Community Safety Officers to be more visible in the village.	Parish Council to discuss with Leicestershire Constabulary the possibility of having more regular/targeted patrols of the village.	Parish Council	Leicestershire Constabulary, Community Safety Partnership	Discussions have been taking place and are ongoing	Medium	Cost of providing Community Safety Officers
	Consider re-introducing and extending Neighbourhood Watch Scheme throughout the village.	Village residents	Leicestershire Constabulary, Parish Council, Leicestershire County Council, Community Safety Partnership	December 2009	Medium	Minimal
5.2 Reduce the speed of traffic travelling along Main Street and Lutterworth Road.	Consider using "Community Speed Watch" to establish the need for traffic calming measures. If necessary introduce additional traffic calming measures. (e.g. speed activated warning signs, closer to the centre of the village in both directions).	Parish Council	Leicestershire County Council, A significant number of village residents	Immediate and ongoing	Medium	Dependent upon measures undertaken
5.3 Improve safety on Main Street.	Put a mirror on the bend by the Swan Inn.	Parish Council	Leicestershire County Council	Dec 2009	Medium	Cost of mirror and road markings
	Consider the provision of disabled parking in front of the shop.					

Action	How it will be tackled	Facilitator	Partners	Timescale	Priority	Resource implications
5.4 Improve safety on Mill Road.	<p>Introduce vehicle size limit.</p> <p>Paint a white line down the middle of the road on the bend.</p> <p>Restrict parking to one side of Mill Road at the junction with main street.</p> <p>Install mirrors at the junction of College Street and Mill Road to improve visibility when exiting.</p> <p>Paint "no parking" lines opposite the exit from College Street to Mill Road extending 50 yards either side of College St.</p>	Parish Council	Leicestershire County Council	Dec 2009	Medium	Road signs, markings and mirrors
5.5 Ensure that parking around the school and after school club is safe for young people and parents.	Encourage using the existing facility of the Village Hall car park and considerate parking elsewhere.	Ullesthorpe Primary School	PTA and School Governors, Parish Council, Leicestershire County Council	As soon as possible	Medium	None
5.6 Ensure that the village roads are safe particularly for those attending the Primary School and Kids Klub	Review and revitalise the Travel Plan developed by the school in 2005.	Ullesthorpe Primary School	Kids Klub, Parish Council, Harborough District Council, Leicestershire County Council, Village residents	June 2009	High	Minimal

Action	How it will be tackled	Facilitator	Partners	Timescale	Priority	Resource implications
5.6 continued.	<p>Concerns to be raised:-</p> <ul style="list-style-type: none"> • road markings around the school • car parking areas • speed restrictions at peak times • installation of flashing school signs • footpaths near school and along the road towards Claybrooke Church • the use of the railway cutting adjacent to the school • possibility of a "Walking Bus" 	Ullesthorpe Primary School	Kids Klub, Parish Council, Harborough District Council, Leicestershire County Council, village residents	June 2009	High	To be costed
6. Health and Community Care						
6.1 Ensure that the GP surgery is retained in the village and that services are increased to meet the needs of a growing population.	Make representations to NHS Leicestershire County and Rutland about the importance of the surgery and encourage them to develop the services to the local community.	Village residents to make their views known to the NHS	NHS Leicestershire County and Rutland, Parish Plan Steering Committee, Parish Council	Immediate and when services are threatened	Medium	None
6.2 Ensure that the services provided by Feilding Palmer Hospital in Lutterworth continue and are enhanced.	Residents to make representations to NHS Leicestershire County and Rutland about the need to retain the hospital's services.	Village residents	NHS Leicestershire County and Rutland, Parish Council, District Councillor	Immediate and when services are threatened	Medium	Minimal

Action	How it will be tackled	Facilitator	Partners	Timescale	Priority	Resource implications
7. Village Green						
7.1 Develop a village green.	Attempt to identify a possible site for a village green that would be acceptable to all interested parties.	Parish Council	Village residents, Harborough District Council, relevant land owners	When land becomes available	Low	Cost of purchasing and developing land
8. Local Employment						
8.1 Ensure that small businesses are able to function efficiently and effectively in Ullesthorpe.	Provide easy access to information on grant funding for businesses.	Lutterworth Service Shop	Harborough District Council, Leicestershire County Council, East Midlands Development Agency, Rural Community Council, Leicestershire Economic Strategic Partnership, Rural Development Partnership	December 2009	Low	Minimal
9. Information about Ullesthorpe						
9.1 Ensure that the leicestershrevillages.com website is fully utilised by village residents and local organisations.	Publicise the availability of the website and arrange training sessions to ensure that all organisations in the village can access the site to advertise their activities, etc. Identify a co-ordinator for the Ullesthorpe section of leicestershrevillages.com	Parish Plan Steering Committee	Rural Community Council, Parish Council, Leicestershire County Council	Ongoing	High	Training costs are met by Leicestershire County Council

Action	How it will be tackled	Facilitator	Partners	Timescale	Priority	Resource implications
9.2 Ensure that information about village organisations, activities, etc is readily available to all residents.	Encourage continued use of the website above once activated.	Parish Council	Leicestershire County Council, Village residents and Organisations	Monthly website updates	High	Minimal
	Produce a leaflet listing village organisations giving their contact details and activities. The leaflet to be delivered to each household, displayed on the village notice board and made available at the shop, surgery, school and pubs.	Parish Plan Steering Committee	Parish Council for updates	Immediate with regular updates	High	Costs of printing
9.3 Enhance the village notice board facility to improve communications to village residents.	Erect a new, larger, more attractive notice board outside the village post office and shop. There should be 3 sections: Parish Council, Current Events, Standing information re: the village	Parish Council	Owners of village Post Office and shop	August 2009	Medium	Cost of buying and installing notice board
	Consider putting new notice boards outside the school and/or village hall.	Parish Council	Leicestershire County Council, Ullesthorpe Primary School and Kids Klub, Village Hall Committee	August 2009	Medium	Cost of buying and installing notice boards

Action	How it will be tackled	Facilitator	Partners	Timescale	Priority	Resource implications
10. Transport						
10.1 Introduce bus services to Leicester, Rugby and Lutterworth (evenings) and the existing service to be extended to include Sundays.	Discuss the feasibility of providing additional services or alternatives with relevant organisations.	Parish Council	Harborough District Council, Lutterworth Volunteer Centre, Leicestershire County Council, village residents	August 2009	Medium	Significant
10.2 Provide cycle tracks in the village and to other local villages including using the railway as a track to Leire.	Discuss the possibility of developing cycle tracks with "Sustrans" and Leicestershire County Council.	Parish Council	Sustrans, Leicestershire County Council, Harborough District Council, village residents	August 2009	Low	Significant
10.3 Provide footpaths out of the village to Ullesthorpe Garden Centre, Ullesthorpe Court Hotel and Ashby Parva.	Discuss with relevant authorities the possibility of developing these footpaths.	Parish Council	Leicestershire County Council, Harborough District Council, village residents	August 2009	Low	Significant
11. Village Activities						
11.1 Ensure that residents are aware of the activities currently taking place in the village.	Greater publicity for existing activities e.g. website, better notice boards, village information leaflet. (Actions 9.1, 9.2 and 9.3 above apply).	Parish Council	Parish Plan Steering Committee	Already started	Medium	None

Acknowledgements

Sponsors

Leicestershire & Rutland Rural Community Council
Voluntary Action South Leicestershire
Ullesthorpe Parish Council
Leicestershire Rural Housing Enabler

Displays at the Past Present and Future Event

Archaeology /Tree Warden	Rural Community Council
Congregational Church	Scouts
Evergreens & Open Gardens	St. Peter's Church
First Responders	Ullesthorpe Football Club
Footpaths Group	Ullesthorpe Kids Klub
Harborough District Council	Ullesthorpe Parish Council
Leicestershire Constabulary	Ullesthorpe Playing Fields Association
Leicestershire Youth Service	Ullesthorpe Pre School
Lutterworth Citizens Advice Bureau	Ullesthorpe Primary School & PTA
Lutterworth Volunteer Centre	Ullesthorpe Subscription Windmill
Mothers Union	Website - Leicestershirevillages.com
Mums & Tots	Women's Institute
Neighbourhood Safety Officer	Youth Club - Congregational Church

Raffle Prizes

Bells Brewery	Ted Carter
Jan Fox	The Swan Inn
Marcus Stevens Butcher	Ullesthorpe Court Golf Shop
Orchard Medical Centre	Ullesthorpe Court Hotel
Sheridan's Hairdressers	Ullesthorpe Garden Centre
St Peter's Preserves	Village Shop & Post Office

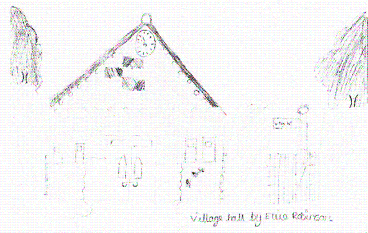
Special thanks for their support

Dean Boonham, Sam Howlett & Diana Cook	Rural Community Council
Gilly Underhill	Village Hall Committee
Jenny Smith	Photos
Mike and Val Wilson	Post Office and Village Shop
Pupils of Ullesthorpe Primary School	Cover drawings
Rosita Page	District and County Councillor
Sarah and Craig Emeny	The Swan Inn
Ted Carter	Cover drawings
Ullesthorpe Book Group	References from 'Ullesthorpe' Book
Many others	Delivering leaflets, reading drafts etc.

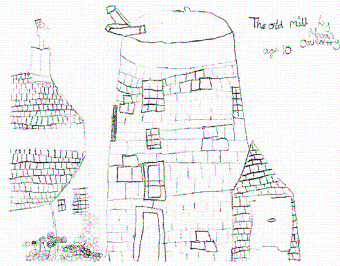
Ullesthorpe Parish Plan Steering Committee

Maggie Pankhurst Steve Osgerby
Terry Hueck Carolyn Osgerby (from April 2008)
Viv Fraser Aleyne Body
Clive & Margaret Stace (resigned December 2007)

Our thanks go to all those who responded to our consultation processes



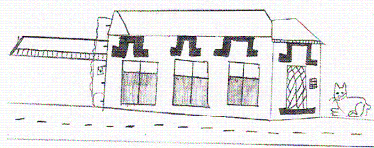
Village hall by ELLIOT Robinson



The old mill by age 10



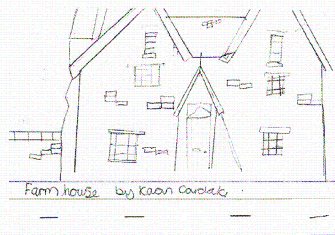
by Tom & wanda



the old school by Sarah Macdonald
Age 10



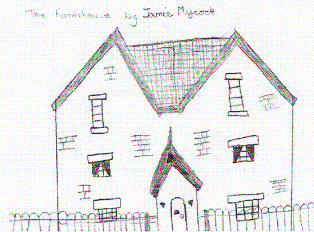
my house and Ben's house by sp1/3 for the school



Farm house by Kaan Cavalek



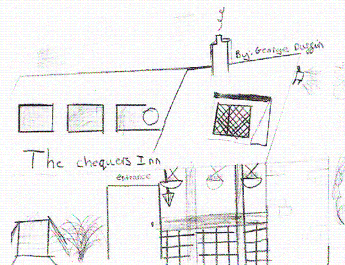
Will Smith funeral by Grace Fitzgerald



The farmhouse by Jamie Mignone



THE CHEQUERS BY THOMAS T



The chequers Inn by George Duggin

Drawings by pupils of Ullesthorpe Church of England Primary School