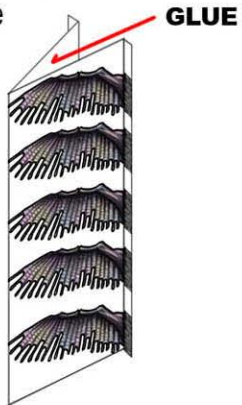




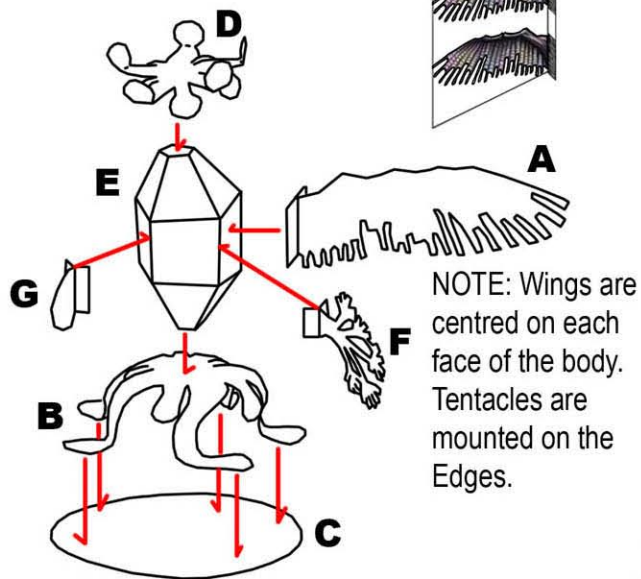


Cut out all the wings (part A) as a single piece, even if you don't intend to use them all as it ensures a more accurate mirror fold. The same applies to the extended tentacles (part F) and the retracted tentacles (part G).

Parts A,F and G: Fold and glue making sure that the end tabs are not stuck together. Cut out individual parts afterwards.



Cut out parts B,C and D as a single piece. This ensures a more accurate mirror fold. Then score, fold and glue before cutting out individual parts.



NOTE: Wings are centred on each face of the body. Tentacles are mounted on the Edges.



Score, fold and glue miniatures as shown. Each figure is exactly mirrored. Once they are folded and glued you can cut closely around them with sharp scissors or a sharp craft knife.

