

*Spring  
2005*

# *The Podium*

*Kappa Kappa Psi/Tau Beta Sigma official publication*

**2005  
National  
Convention  
July 26-31**

*Lexington*  
**KENTUCKY**



# CONTENTS

spring 2005



Team Tau Beta Sigma, Past, Present and Future <i>by Deborah Baker</i> .....	4
The Importance of a Document <i>by Michael Osborn</i> .....	5
KKΨ and TBΣ Make a Dynamic Duo <i>by Derrick Mills and Dollie McDonald</i> .....	6
Which Comes First, the Need or the Grant <i>by Dana Swanson</i> .....	7
Striving for the Highest a Half Century Ago <i>by Dr. William Peter</i> .....	8-9
Future Success? Why Not Me? <i>by Alan J. Harriet</i> .....	10
An Honor, Still <i>by Avery Kenly and Jessica Rich</i> .....	11
Leap Tall Buildings in a Single Bound <i>by Kathy Godwin</i> .....	12
Student News from Across the Nation.....	13, 24, 38
Signing Off <i>by Adam Cantley</i> .....	14
National Programs Summary <i>by Michelle Kincheloe</i> .....	15
Pull-Out Section, 2005 National Convention.....	17-23
Meet the NIB Conductor and Composer.....	25
KKΨ and John Philip Sousa <i>by Dr. Michael Golemo</i> .....	28-29
Director's Corner <i>featuring William Johnson</i> .....	31
Encore!.....	33-36

The PODIUM is a Kappa Kappa Psi/Tau Beta Sigma publication issued twice per year, in the spring and fall. Kappa Kappa Psi and Tau Beta Sigma are non-profit organizations.

#### STAFF

Lt. Col. Alan Bonner, USAF (Ret.).....Publisher  
 Marcus A. Brown.....Editor/Publications Manager  
 Dixie Mosier-Green.....Headquarters Administrator  
 Di Spiva.....National Accountant  
 Carolyn Steckel.....Membership Services  
 Adam Cantley.....KKΨ National Chapter Field Representative

#### MAILING ADDRESS

The PODIUM  
 National Headquarters KKΨ/TBΣ  
 P.O. Box 849  
 Stillwater, OK 74076-0849  
 405/372-2333  
 www.kkypsi.org  
 e-mail: podium@kkypsi.org

#### ARTICLE SUBMISSIONS

News articles must be prepared using common word processing software or submitted by e-mail. Photographs must have captions attached with all individuals identified. Detailed author's guidelines can be found on the NHQ web site at:

<http://www.kkypsi.org/podium.html>

See Also: Page 37 of this issue

#### Deadlines

Fall issue.....May 1

Spring issue .....November 1

The PODIUM is produced at the National Headquarters of Kappa Kappa Psi/Tau Beta Sigma in Stillwater, Okla., and printed and mailed by Modern Litho-Print, Jefferson City, Mo.

### On the Cover:

The old Fayette County Courthouse (from 1901 to 2001) is now the home of the Lexington History Museum.

The museum occupies the main floor and second level of the historical landmark. The museum's Board



of Trustees remains committed to the eventual restoration of the historic building to its original condition, including the magnificent interior dome

which greeted visitors through the main entryway.

#### KKΨ/TBΣ are members of:



From the

# Executive Director...

Lt. Col. Alan Bonner, USAF (Ret.)  
National Executive Director



As I write this in January with several inches of snow on the ground in Oklahoma and cold temperatures, it struck me how much our preparation for the 2005 National Convention next summer impacts both national councils and the entire Headquarters staff despite the months that have to pass before we get to July! Not complaining,

mind you.

It's exciting, challenging, frustrating and rewarding all at the same time as we negotiate with our convention hotel, guest speakers, vendors and even with each other as we give our best effort to make the convention worth your time and resources so that it is a priority in your life this year!

The 2005 National Convention in Lexington, Kentucky, will be my fifth to be a part of and fourth to 'develop' from beginning site search to signing the contract and paying the bills. The trend I have seen in the past eight years is so positive that I cannot help but be proud of what has been established. The priorities have been significantly shifted from busy work to making the convention an opportunity to provide our attendees with outstanding speakers, professional opportunities and life-changing leadership challenges.

All of these elements work together to help us serve our university bands even better than we already do. They further enhance the strong fraternal experience for brotherhood and sisterhood and we have a great time doing it all!

This year we will feature four national personalities during the convention week.

Our National Intercollegiate Band Conductor, Michael Haithcock, Director of Bands at the University of Michigan and internationally renowned composer and Philip Sparke from England, our KKΨ & TBΣ Commissioning Program Composer, will join forces during the Educational Forums at a "Meet the Conductor & Composer" Session.

For those of you who aspire to a career in the music world, it just doesn't get much better than that!

I am very pleased that we will introduce to you all in a joint KKΨ & TBΣ general session, Dr. Lori Ebert, Director of Alcohol Education for Pi Kappa Phi Fraternity and nationally respected expert on gender relationships and alcohol abuse. She has planned a specially tailored presentation for us that should not be missed! Finally, Dr. Tim Lautzenheiser returns to our national convention stage to

dazzle you all with his wit, wisdom and endless enthusiasm & energy that will leave you ready to take on the world!

Whether it is the chance to participate in our nation's longest continuously running honor band for university students, (the National Intercollegiate Band,) or to put your personal stamp on the future of Kappa Kappa Psi & Tau Beta Sigma (through your participation in committees, discussions or by being a delegate,) only the faint at heart wouldn't give serious consideration to make it to Lexington this summer!

I strongly encourage you all to come and join your Brothers & Sisters in a truly special event that will be a long-lasting and special memory!!!

See you there...

## Calendar 2005

### April

- 1 - Chapter Summary Reports mailed out to chapter
- 4 - Postmark deadline for NIB applications and audition tapes

### May 1

- Postmark deadline for articles for *The Podium* Fall 2005 issue

### June 1

- Deadline for Chapter Summary Report
- Postmark deadline for National Convention on-time registration
- Postmark deadline for National Convention hotel reservations

### July

- 1 - Deadline for KKΨ A. Frank Martin and J. Lee Burke Student Achievement Award applications
- 22-24 - National Councils' Summer Meeting, Lexington, Ky.
- 24-25 - 2005 District Leadership Conference, Lexington, Ky.
- 26 - 2005 NIB Performance, Lexington, Ky.
- 26-31 - 2005 National Convention, Lexington, Ky.

### August 29

- Chapter Personnel Report mailed out to chapters

### September 30

- Deadline for Chapter Fee and Membership Dues (For Chapters beginning school before September 15)

### October

- 15 - Deadline for Chapter Fee and Membership Dues (for chapters beginning school after September 15)
- 31 - 25% late fee, chapter fee and member dues in effect

### November 1

- Postmark deadline for articles for *The Podium* Spring 2006

# TEAM Tau Beta Sigma

## Past, Present, and Future

By Deborah L. Baker, National President, TBΣ

2005 is here!

Who would ever believe the time has arrived?

Where have we been, what have we accomplished, what programs have made a difference to our chapters? What has our Sorority done to "build better bands" across the nation?

Sometimes all the "national" talk can get heavy and complex. So deep that people wonder, how does all this effect me and my chapter on a daily basis? As we learned at the 2003 National Convention, Tau Beta Sigma Sorority, is YOU have the ACTIVE membership! While the national council, district officers, band directors, sponsors and alumni are part of the TEAM, the ultimate difference comes from the active membership and local chapters. Tau Beta Sigma active members are the foundation of our organization. Without active members, there is no sorority. It is exciting to welcome new members and honoraries to our bond of Sisterhood. Retention of membership should always be important for your chapter. Quality versus quantity will always be of concern. But this biennium we have all learned that quantity and quality go side by side. Tau Beta Sigma wants to offer ALL outstanding people in your band an opportunity to share our goals and mission. Tau Beta Sigma builds better bands through outstanding band members. The more outstanding band members the better bands we build!

This biennium YOU have been committed to this task and I congratulate your success. Membership is up, retention is strong, paperwork



and financial obligations are on the rise. Many chapters reviewed their membership process and "looked outside the box" to spread the word of Tau Beta Sigma in a new fashion. Many chapters under-

stood that their actions are the reason why someone wants to join. Talk is easy, but doing is a true measure of dedication. Share your success with the band. Remember "Success is Addictive!"

This biennium, your district officers and counselors were challenged to know their district. They were asked to identify the "communication" problem in their district, have personal contact with chapter presidents and share the needs of each various state. Your district officers were asked to be accountable for the actions of their chapters. There isn't much glory in that, yet 48 members and six great counselors gave willingly of themselves to bring our Sorority to a new level. I congratulate these individuals for their hard work and dedication. They understood that Together Everyone Achieves More-go TEAM Tau Beta Sigma !

Over this past biennium, the national council brought the issues of our organization to you. We have asked the membership to share in the financial concerns. We have realized the need to restructure while still keeping our initiatives and mission alive. We have worked to build an outstanding biennium and a very bright future. The Sorority is on its way to being financially viable once again. With increased membership and financial stability, we are able to focus on new and creative programs

that are beneficial to the local chapter. Tau Beta Sigma is not an organization for the national council. YOU ARE TAU BETA SIGMA and we are proud to share your dedication, commitment and love for bands. Each and everyday may you live with the passion to "build better bands!"

I encourage every Tau Beta Sigma member to attend the National Convention this summer in Lexington, Kentucky. You will not be disappointed! National Convention gives us an opportunity to voice our opinions, share great ideas and make great friendships! The direction of the next two years will be decided at this meeting. Your voice is important! One person does make a difference, so imagine what a difference we can all make by working together! Apply for the National Intercollegiate Band, be your chapter delegate, work on a chapter display. There are many ways to be involved. Attend some great workshops on leadership, music and sorority issues. And if you have not had the chance, come meet WAVA! What a great opportunity to meet the founder of our Sorority. Make your plans now to attend! Come and share in our Sorority celebration- 60 years of service to Bands! I hope you are making plans to attend and I look forward to meeting each of you.

Some people say I can be emotional but I prefer letting them know I am passionate about the important things in my life. Come to Lexington and share in our great past, voice your opinion in the present and help share the future of our Sorority!

“  
Tau Beta Sigma  
For Greater Bands!”



# The Importance of a Document

By Michael Osborn, National President, KKΨ



Any organized and successful group has documents to guide its membership in the appropriate actions and appropriate beliefs. Where some religions might have the Bible and the Ten Commandments, a team has a playbook and a car owner has an owner's manual. We as a fraternity have a Ritual, Five Purposes and a Mission Statement. Our fraternity Ritual is a living document, a wonderful piece of literature that gives meaning and focus to our fraternity. It provides the member with an aide in dealing with life, both fraternal and personal. In conjunction with the Five Purposes and the Mission Statement, the Ritual provides us with an identity, a reason to exist and a direction to head. Unfortunately, within our membership our Ritual is often a dormant book, utilized on a few special occasions; our Five Purposes are merely fodder for memorization and regurgitation, and our Mission Statement is a nice thought to put on a sign or a banner at a meeting.

A chapter, or even an individual Brother, who fails to use these documents to their full potential by relegating them to the status of "only for special occasions" chooses (in some cases through ignorance) to miss out on a full Kappa Kappa Psi experience. That chapter or Brother chooses to miss out on the clearly defined lessons and focus that could guide a chapter or Brother through tough times or guide decisions regarding the future direction of the chapter.

Imagine a religion in which the core documents that contain the lessons and belief system are relegated to use only on special occasions. Imagine a football team that ignores its playbook except on the first week of preseason

practice. Imagine the fate of a household appliance or car if the owner chooses to put the owners manual in a drawer without ever learning how to operate or care for the special features of that piece of equipment.

Just as in a religion, one ideally lives according to the teachings of the document of core values and beliefs; a team lives and succeeds through flawless (hopefully) execution of the playbook.

Our Fraternity is called to live our Ritual, to reflect our Purposes and to be an example of our Mission. This is not possible if these documents are relegated to relic status, hidden away except for a few hours of the year. Unlike formal clothing or fine china that you might pack away only to be used rarely in fear of wearing them out, our documents are strengthened through constant use as are our members and our fraternity.

So what does this all mean? If we are truly to live in the way that our founders envisioned and if we are truly to be a National Brotherhood, the documents of fundamental

beliefs of this fraternity (Ritual, Purposes, Mission) must become the central focus of our activities, our membership education activities, even our meetings to see if they meet the expectations and spirit of our fundamental beliefs. To achieve this we must strive to read and reflect on Ritual and learn the meaning behind the purposes and mission not just the words that make them up. Use these things as the tools for growth they were intended to be. If we can do this, not only will Kappa Kappa Psi strive to an even higher standard, but also our members will rise to a higher level of experience and success. We can no longer accept that our Ritual, Purposes and Mission are merely ornaments to be brought out on special occasions.

This summer you have the opportunity to live, learn and experience through the fraternity at National Convention. For five days this summer in Lexington, you will be challenged to share yourself, your knowledge and your experience. In short, you will have the opportunity to live our fundamental beliefs. You will have opportunities to live among those who share our Purposes, to further study the Ritual,

to strive for our common goals and to shape the future of our fraternity. Not all of us will be able to participate in our National Convention. However, all of us can live the spirit of national convention and our fraternal beliefs by being a constant student and a willing teacher of those things that define this brotherhood.

“Imagine a religion in which the core documents that contain the lessons and belief system are relegated to use only on special occasions.”

# Kappa Kappa Psi and Tau Beta Sigma make a dynamic duo

By

Derrick Mills Vice President for Student Affairs, KKΨ

and

Dollie McDonald Vice President for Communications & Recognition, TBΣ

The letter “D” can be used to describe our organizations in many cases. When you think of KKΨ and TBΣ they can be described as dynamic, determined, dedicated, and sometimes double trouble. We believe having positive joint relations are essential to achieve that dynamic duo. As Chapter Field Representatives together, we developed a brother-sister relationship that afforded us the opportunity to be candid and open with each other about any situation or circumstance. That same openness continues today as we serve as national council members. We haven’t always agreed on everything, but working together has always proven to be better than working apart to achieve the same goal: **MAKING OUR BANDS BETTER!** We realized communicating about our differences and being open on our separate and joint issues created a stronger bond and allowed us to be even more productive in our various roles.

This past district convention season, we had the opportunity to lead workshops focusing on improving joint relations. We heard almost identical problems voiced from active members and alumni at the district conventions where we held the sessions. “How can we work together better?” Was the re-occurring theme. Also, “they said this,” or “they said they were going to do that” we heard many times.

We want to tell you that we don’t have the formula for achieving perfect joint relations, but listening is the first step. When we moved to Stillwater in 2000, we sat and talked for several hours about each other and who we were. We talked about business and shared crazy stories about our lives. Developing a **REAL** brotherhood and sisterhood bond with each

other initially can make communication less challenging. People have said that it is because of “Nationals” that our chapter joint relations are bad. Brothers and sisters, the few individuals that volunteer as National Council members and the people that work at National Headquarters are not “nationals,” **YOU ARE NATIONALS!** It is active members of Kappa Kappa Psi and Tau Beta Sigma that are the driving force toward positive joint relations. We, as volunteer leaders

of our organizations, feed off of your energy and enthusiasm towards joint relations. You as active members are vital towards the continued existence of both organizations. No one has ever said that any relationship is ever easy. Many of you have siblings and know those relationships aren’t always perfect. The same challenge is here. It is much easier to finish a project working together on the same page rather than working together and negatively

talking about each other behind the back.

This is something that we figured out along the way: we are much stronger individually and for both causes when we work well together. While we may not always agree, and we have our differences, we still continue to work well and communicate with each other. Along our journey we both decided to make the choice to work together. Use the example of your band director rehearsing the band. He or she is going to make sure the whole band is performing to its potential, not just the KKΨ or TBΣ members. Wrong notes are wrong notes whoever they are coming from. As a band you are all striving to have that perfect performance together and the same should ring true in our joint fraternity/sorority relations.



*Derrick and Dollie at the 2003 National Convention.*

# Which comes first, the need or the grant?

Restricted vs. Unrestricted Funds

By Dana Swanson

Life Member, Zeta Epsilon / TBΣ

**M**any people ask me to help find grants for them, but when I ask them what the grants are for, I get blank stares. Grants are highly specific, and if you don't know what you need, how can you find a grant for it? Researching grant opportunities is somewhat of a full-time job. I spend the majority of my time looking for grants that would support organizational needs. When I don't have a list of these needs, imagine how hard it is for me to narrow down all the grants I find to those that we really have a shot at getting funded! However, having all of these grants at my fingertips might be helpful if a need ever arises that could fit the criteria of a grant that isn't useful to me now. So, which comes first? You can write a basic grant for non-specific purposes in some cases but in others, you have to know exactly what you are doing and how you plan to do it. This is why I strongly recommend identifying your needs first.

Grants fall into two basic categories: restricted and unrestricted.

**RESTRICTED** grants require more work than others because they require you to use the funds exactly for the purposes stated in your proposal (with some changes possible in some cases with prior approval.)



This means that if you ask for funds for new hats, you had better buy new hats. You can't use the funds at your discretion. You will be required to keep these funds separate from your general operating fund, and you will need to account for the money you use and how you use it. Does this sound scary? A grant proposal is a promise

of sorts. You are promising that you will use their money in a manner that they approve of. The upside of restricted funds is that they usually result in larger amounts of money. If you need to make revisions after you get the money, you can often do so if you ask permission before you spend the money. Realize that if you don't make good on the promises you made in the proposal, you will probably be required to pay the money back.

**UNRESTRICTED** grants are often smaller (often less than \$5000) and can be used for a variety of purposes. Most often these are grants to support an on-going program or to fund general operating expenses. Unrestricted funds can sometimes be written if you don't know what your needs are. There are a lot of these types of grants available and they don't require quite as much work because you don't have to be as specific in the proposal about what you will be using the money for. Plus, you don't have to account for every penny. Often you are not required to do anything further once you receive the money. I

like to recommend that at the very least, you send a thank-you with perhaps a list of things the money was used for. This helps if you want to apply again down the road! The downside to unrestricted grants is that you will have much more competition for limited funds.

How can you tell if a grant is restricted or unrestricted? Federal grants (NEA, Dept. of Education, etc.) are always restricted. Have you ever known the federal government to give away money without restriction? Sometimes the guidelines detail very specific reporting procedures. The more specific the reporting requirements, the more restrictive the grant will be. Unrestricted grants often have no reporting procedures. The type of funding provided can also be a giveaway. The less specific the funding is (e.g. for general operating funds,) the more likely the grant is to be unrestricted. Sometimes you won't be able to tell. Never assume anything. If you make a mistake, it could be costly! You can always contact the grantor and ask for more information.

Make sure you read all grant guidelines completely, and understand what is required of you. No matter what kind of grant you write, the first ones will be difficult. There are so many rules, and no two grantors have the same rules. If you have any questions about a particular grant, don't be shy. Contact the grantor and ask questions. Get to know someone at the granting agency and it will make your life much easier. Sometimes they can even give you information that isn't readily available, thus giving you a definite advantage.



# Striving for the Highest a Half Century Ago

**By Dr. William Peter**

*KKΨ Alpha Chapter president 1954-1955  
Oklahoma State University*

**T**he 1950's! What a time it was to be a college student! And especially so for the members of Alpha Chapter, Kappa Kappa Psi, at Oklahoma A & M College (now Oklahoma State University.) The founding spirit and principles were with us through still -living founders whom we were privileged to meet and talk to. The founding father, William Scroggs, was still active nationally. A. Frank Martin, another of the fraternity's founders, and a past Grand President, could be visited any day in the KKΨ National Office on campus. He was at that time the National Executive Secretary.

Dr. Bohumil Makovsky, the first National Honorary Member, the initial sponsor of Alpha Chapter, and National Grand President in 1927, was still among us as an emeritus professor and occasionally conducted the symphonic band. Boh, as he was lovingly known, was seldom seen on campus during his thirty plus years at OAMC without a suit, white shirt and his signature black bow tie. Alpha Chapter pledges were obliged to make a large black bow tie and wear it in his honor for much of their pledge period.

Pledging Alpha Chapter was special then in other ways. In addition to the bow tie, the 1950's Alpha Chapter pledges dressed comically, frequently in ancient band uniforms, during pledge week. Also, hanging from a cord around his neck, each wore a wooden placard known as a "pledge board" that he had crafted after a designated design. Thus dressed, the pledges were required to carry their instruments and play the school song "proudly" at the door of each building they entered across campus during pledge week. Often at class-change time one would hear Ride 'Em Cowboys ringing out from various locations across campus like echoes across the Alps.

The pledge was charged to seek out each of the active members and have him sign his pledge board. I still treasure Boh's signature on my pledge board.

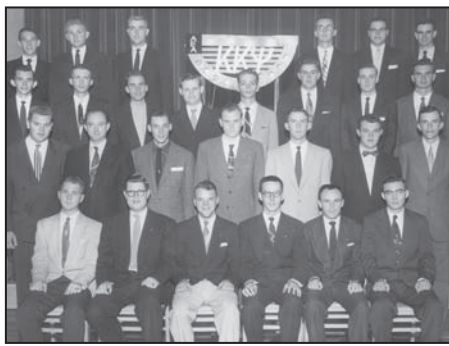
Absence of a single active member's signature meant no initiation. Some of the members used this requirement to exact some requirements of their own -- shine his shoes, play a tune, explain the symbolism on the placard, and the like. More than one pledge carried a small shoe shine kit so he wouldn't have to face double jeopardy when he took the shoes back. Far from the hazing of social fraternities at the time, pledges and members alike had great fun with all of this.

While pledging was great fun, the pledges were also charged to plan and complete service projects both as a pledge class and as individuals. An example of such projects is seen in the picture that shows pledges with a ladder. They were removing red paint that had been applied by some jokesters (probably pledges from another fraternity) from the front porch light of a prominent campus sorority. This they did in exchange for a promise that the ladies would attend the forthcoming band concert. The pledging activities, comical and serious alike, contributed considerable service and positive visibility to the fraternity and the university bands.

Membership was a joy, with much fellowship among fellows of like interest and condition. It was somewhat exclusive and definitely prestigious. All eligible were not nominated. All nominated were not pledged. All who pledged were not inducted into membership. Then, as probably now, KKΨ membership was noted on all band concert programs with an asterisk by each member's name. Uniform patches were available to members. Officers were often recognized at concerts by having them stand.

Several chapter activities and projects included initiating the formation of a new colony in another college. Commander Charles Brendler, Director of the United States Navy Band, was inducted as an honorary member of Alpha Chapter. A special walnut and brass plaque in the shape of Boh's tie was made and presented to him during a Navy Band concert on campus. The 50th





*The pledge class of Alpha Chapter, KKΨ, 1950. Dr. Peter is seated on the bottom row, third from the right.*

anniversary of bands at OAMC occurred in 1955 and of course KKΨ members were intrinsically involved in that event, as well.

In 1954, the chapter built a float for the Homecoming Parade -- a huge black cat (an obviously tamed Houston Cougar) with a twirler riding on top and a six piece band playing the A&M fight song inside. It represented hundreds of hours in planning and construction! No prize was forthcoming from the apparently blind judges but it netted many great crowd responses and a lot of good visibility for the fraternity, not to mention fellowship and fond memories.

Members were instrumental in planning and pulling off a most ingenious caper to honor a revered member. It was decided that the much admired and respected director of the "Aggie Band," Hiram Henry, should be honored. A coterie of brothers gathered to design and add a special formation to the forthcoming half-time show without Hiram's knowledge or suspicion. A formation chart was made, music arranged, and then surreptitiously distributed to the band. But of course rehearsing it was not possible. The plan was to morph the formation that spelled out "ALUMNI" at the end of the show into "HIRAM." This was to be accompanied by an appropriate announcer's script and music. It came off perfectly. Taken totally by surprise, Hiram was stunned when instead of exiting on cue the band seemed to be falling totally apart. He recovered. To date he has contributed over a half a century of service to OSU, to its bands and their audiences and to the thousands of stu-

dents he has served - many of whom became band directors and so spread his influence even further. He continues to serve even in retirement and is currently involved in helping to plan the 100th Anniversary of Bands at OSU, an event scheduled for next October.

Hiram is a Kappa Kappa Psi leader among leaders who has personified the motto, "Strive for the highest."

Regarding Kappa Kappa Psi social events there were many more informal ones than formal. Dr. Max Mitchell, Music Department Chair and Symphonic Band Conductor, and former National Grand President along with his wife, Susan, hosted the chapter for a buffet dinner at their



*Dr. Peter's Pledge Board signed by all active members at the time, including Boh Makovsky, A. Frank Martin, Hiram Henry and Max Mitchell.*

home in appreciation of the fraternity's efforts and contributions. "Smokers" were held occasionally (though few smoked) to get better acquainted with prospective pledges. The officers met almost daily, usually over a cup of coffee at the "Y Hut," to talk and plan. This was in a small-frame mid-campus building adjacent to the KKΨ National Headquarters. One such result of these meetings was an especially memorable occasion. Several of the members made a week-long fishing trip/retreat to the (then) newest lake in Oklahoma, Lake Tenkiller. There were many other similar events.

It was a great time to be a college student, a wonderful time to be in the band at OSU and a fulfilling time to pledge and be a member of Kappa Kappa Psi. We strived to make our bands the best. May your days be as fruitful and pleasurable. And of course this will happen if you always continue, as we were then inspired, to "Strive for the highest."



*Members of KKΨ at Oklahoma State University wearing over-sized bow ties in honor of Boh Makovsky.*



Dr. William "Bill" Peter is a Professor Emeritus of Central Missouri State University, in Warrensburg, Missouri. He directed bands in Prague, Pawnee, and Tahlequah, Oklahoma public schools for 17 years before moving to Missouri in 1971. He was president of the Alpha Chapter pledge class in 1949-50. After two years of service in the 45th Division Army Band, he returned to A&M (aka OSU) and served as president of Alpha Chapter in 1954-55.

# FUTURE SUCCESS?

## WHY NOT ME?

By Alan J. Harriet

Tau Beta Sigma Board of Trustees

“Why not us?” This was the motto of the 2004 World Champion Boston Red Sox.

The Boston Red Sox are a team that went 86 years between world championships until they finally obtained the right formula of preparation and confidence to get the job done. For years, the Red Sox knew what they needed to do. However, they did not know how to get there, until this year.

As college students preparing for the remainder of our lives, everyone wonders what the future holds. Will I have a successful career? Will I become financially stable? What about my social life? Will I someday get married? Will I have a family? What about my health and the health of my family? We can control the fate of some aspects of these questions while in other cases, it is the luck of the draw and we have to play with the cards dealt to us.

When I graduated from high school and entered college later that fall, I was a boy. I had a lot to learn and I had a lot of experiences to go through in life. When I graduated four years later I was a man, although I was a young man with lots to learn. I had to get work experience to put myself in a good position for the future. You are in a similar position today as I was back then. At this point, the world may look like a scary place when it comes

to entering the professional work force. I learned the key is to be prepared and to be confident. Lots of people are in the exact same position as you are right now. The entry level job market may have a limited number of jobs out there but believe me, there is one with your name on it in a field that you want to enter. It may take several months to find it but it



is out there.

Let's talk about preparation. In most fields, it is important that you graduate. This is the number one priority. Band and Tau Beta Sigma are additional ways to prepare. Band, like sports, theatre and certain other activities, gives you a chance to prepare something (ie: music and/or a show) and present it to an audience of several thousand people. Whether you realize it or not, this prepares you for the future. Whether you are doing officer work or moving equipment for the band and your local chapter, you are preparing yourself for the future by doing something positive towards the task at hand.

As far as confidence is concerned, the confident person is the one who is going to succeed. Many people lack confidence until the day comes when they put their lack of confidence behind them and complete a task

successfully, realizing that they can. It took me several years to learn to be confident. I am now to the point in my career where I feel that I am as knowledgeable as the top people in my profession. I feel that I could out-argue anyone on any tax issue, hands down, where I am in the right. Why? Because I feel knowledgeable, prepared and confident. This happens to everyone who follows the formula that I have spoken about.

In conclusion, in order to be successful, remember the following rules:

- 1) Become as prepared as possible as preparation is the key to success. Find out what it takes to become prepared and do it!!! By going to college and participating in band and TBS, you are already on your way to complete preparation.
- 2) Be confident. Other people will become prepared just like you. The difference is some will be afraid to go forward. If you are confident, you will not be afraid and that will be the difference between success and failure.
- 3) Keep trying until you reach success. Success usually does not happen right away. It may even take several years. However, you WILL get there if you keep at it.

“...the confident person is the one who is going to succeed.”



# An Honor Still

BY  
AVERY KENLY  
(LIFE MEMBER, DELTA IOTA)  
AND  
JESSICA RICH  
(LIFE MEMBER, THETA ZETA)

**T**hrough innovative programs, altruistic actions and a steadfast commitment to our purposes, the Atlanta Alumni Association of Kappa Kappa Psi and Tau Beta Sigma (AAA) has made an instant impact on the music community in the metropolitan Atlanta area. With our motto, "An Honor, Still," the members of the AAA work together to exemplify the principles of integrity, leadership and commitment while providing service and support to the band programs in the Atlanta area. The



The AAA Golden Baton Scholarship Students with Brother Diron Holloway, professor and director of saxophones at Florida A&M University.

We also had the opportunity to send two high school students to the camp by providing camp scholarships.

On September 19, the AAA held a National Report Writing Workshop for active chapters in Atlanta and surrounding areas. Brother Phillip Rubin of the Kappa Mu Chapter at the University of Georgia and the current Southeast District Vice-President conducted this workshop along with the President of the AAA Brother Avery Kenly. In attendance were members from Kappa Kappa Psi chapters: Georgia Tech- Iota, Morehouse College- Iota Theta, Clark Atlanta University- Iota Tau, University of Georgia- Kappa Mu and the University of West Georgia- Lambda Eta. Also in attendance was the Theta Nu chapter of Tau Beta Sigma from Clark Atlanta University. The workshops were very beneficial to all who attended.

The paramount project of the AAA is our scholarship program, The Golden Baton Scholarship Initiative (GBSI). The GBSI Program is geared toward senior high school students who are preparing to participate in collegiate marching bands. There are seven outstanding students in the program who are all leaders in their respective high school bands. The GBSI students will be taken through a series of workshops preparing them for college and participation in a collegiate marching band. A series of workshops will be conducted on college preparation (SAT/ACT, applications, financial aid, housing and scholarships.) Leadership, professional development (writing and oration.) Private lessons/recital preparations and arranging/music theory.

The students have already attended the Birmingham Battle of the Bands and with the assistance of the Iota Theta Chapter at Morehouse College were treated to a tour of

Morehouse College and were able to see a collegiate game. The program will culminate with a scholarship banquet to be held on April 16, 2005.

While we believe that service must be the heart of our existence, we know that what binds us in these organizations are our love for the band and our opportunities to fellowship. The AAA has had numerous social activities including a Fourth of July cookout, a dinner during the Atlanta Classic weekend and our 1st annual Holiday Social. As we continue to expand the boundaries and views of Alumni Associations, we in the AAA prefer to say we ARE Brothers and Sisters of KKΨ and TBΣ not WERE Brothers and Sisters of KKΨ and TBΣ, for it is An Honor, Still.

“Boasting a membership of more than 50 Brothers and Sisters”

AAA members encourage the advancement of education and leadership band programs in the Atlanta area. The AAA members also encourage the advancement of education and leadership development to the students in which they serve. The AAA works diligently to foster a strong bond with the local undergraduate chapters in the Atlanta area to give the membership valid and wholesome experiences in organization, leadership and social contact.

Boasting a membership of more than 50 Brothers and Sisters, the AAA has made an incessant effort to enrich the lives of its members through constant participation in worthwhile projects. By focusing the majority of our activities on service, our members assisted with the Metro Atlanta Precision Band Camp during the first week in July. Brothers and Sisters assisted with the camp participants, served as ushers, ticket takers and even helped direct traffic.



Brother Avery Kenly, President of the Atlanta Alumni Association, presenting a certificate of appreciation to Brother Phillip Rubin, President of the Kappa Mu Chapter of KKΨ, for conducting a National Reports Workshop.

# Leap Tall Buildings in a Single Bound



By Kathy Godwin  
VP of Colonization and  
Membership, TBΣ

**A**s conventions approach on the district and national levels, it's time again to think about running for office. Each year there are sisters and

brothers who talk about running for office, but when the time comes, some conventions see few participants vying for a nomination.

The first step in the process is to not be concerned about the election process or even what some say are overwhelming commitments of time, energy and funds. In reality, your first step should be to look within yourself and what you believe. Do you support the Sorority? Do you believe in the ideals of the organization? Where has Tau Beta Sigma led you? Has it been worth the time and effort you put in? How about the time and effort others have given to you? Do you have a tie to this bond we share?

Once you realize you do share this bond within the Sorority, the next step is qualifications. What are they? For that, turn to the National Constitution along with your district qualifications. None of that information is a secret as most of it is available on line. You don't have to have held a chapter office to be a district officer. You don't have to have been a district officer to be on the National Council or on the Board of Trustees. Your national and district officers along with the Board of Trustees and the district counselors would be more than happy to explain the qualifications or lead you to a site or send documentation to you if you have questions.

Now, the "overwhelming commitments" (gasp!) Yes, it does take time and resources to be on a council, I won't lie about that. However, many times alumni and actives frighten potential candidates with unrealistic expectations. Again, I encourage you to seek out the current leadership to ask the questions. We all have e-mail, phone and instant messaging. Contact us...we'll answer. Keep in mind that an officer is not expected to attend every precinct, block or state day, attend every workshop, visit every chapter in the district, colonize every school without a chapter in the district, raise \$1,000,000 for the district and leap tall buildings in a single bound. You're human.

The last area of concern, I've found, has to do with the hesitation for the unknown outcome. As I said earlier, the election process itself should not be the worry or who your opponent may or may not be. No, I'd rather not see a civil war...this is an election, not Survivor...outplay, outwit, outlast. When you run, it should be about serving. It should be about bringing forth new ideas and working to build on the projects that are succeeding. So, if you hear that Jane or Joe Active is running from the Omega Omega chapter for the office you'd be fit for, run anyway. Stand up and say what

think. Pitch your ideas with all your might. Just because you run against another individual, it doesn't mean you dislike them as a person. You may even have common ideas but different styles of working and that's where you vary. The election itself is the secondary concern. The main focus is for all members of Tau Beta Sigma to work toward making our organization better and stronger. By bringing your ideas forward, you provide the diversity of thoughts that we need to continue to grow.

I therefore charge you to consider running for offices. If you feel it is not the right time for you or you do not currently meet the qualifications, then seek out those you believe have the leadership and bond to the Sorority to hold an office and encourage them.

## Motivate...Lead.... Inspire...Challenge...

Kappa Kappa Psi  
Keynote Address Contest

"As Brothers, we must fulfill certain responsibilities to the bands we serve and love. We are responsible for spreading music wherever we can, for bringing its unique message to all corners of our lives, for making a joyful noise in a world so often filled with the sounds of bleakness and pain."

- Katherine Hoffman, 2003 Keynote Address

Set the stage for the 2005 National Convention by being selected to give the Keynote Address during the opening session in Lexington, Kentucky!

Keynote Address Recipient receives an honorarium to cover National Convention registration costs.

- Open to All Active Kappa Kappa Psi Brothers
- Submissions must include a printed copy of the Keynote Address and either an audio or video taped version.
- All submissions due (postmarked) by April 1, 2005.

Mail Submissions To:  
National Headquarters  
Kappa Kappa Psi Keynote Address  
P.O. Box 849  
Stillwater, OK 74076-0849

For More Information—Contact:  
Michelle Kincheloe  
National Vice President for Programs  
9082 E. Mansfield Ave.  
Denver, CO 80237  
michelle.kincheloe@dexmedia.com



# NEWS

## STUDENT NEWS FROM ACROSS THE NATION

### BAND PARENT'S DAY

#### A SUCCESS

BLACKSBURG, Va. - Each fall the sisters of Zeta Omicron plan one football game during the marching season where we invite our parents to come see us hard at work!

Nearly 400 parents traveled to Blacksburg on September 25, 2004, for our football game against NC State. Our chapter put together the whole weekend, including selling and distributing tickets to the game and coordinating some fun social events.

Friday night we a clubhouse and invited our parents to a laid back and fun atmosphere where they could meet the families of other brothers of Kappa Kappa Psi. After the football game on Saturday, we organized a reception at our practice field where we served tons of cake, vegetables, crackers and drinks to those parents and families in attendance. We all worked hard to make the weekend a success and we were very satisfied with the turnout. It was wonderful being able to show our parents how hard we work to prepare a new halftime show each week!

*-Jessica Miller, Corresponding Secretary, TBΣ, Zeta Omicron - Virginia Tech University*

### FULL STEAM AHEAD

WEST LAFAYETTE, Ind. - "Full Steam Ahead" was not only this season's Boilermaker Football slogan, but the mind set of the Brothers of Gamma Pi. Providing the Purdue band members with two cookouts and a dance were just a few events to start the semester. Looking back, we anticipated many train stops along the way which included rush functions and service projects. All stops were a success and we were able to reach our destination by providing our band department with exemplary service.

The fall is a very important time for our chapter because it is when we do all of our recruiting. After nearly doubling our size with the activation of last year's

class, we were excited to see what this year had in store. We hosted an ice cream social, a night of ultimate frisbee, pumpkin carving, trivia and buffalo wings at BW3's, an evening at our recreational sports center and a service rush function to incorporate our strong culture of service into recruiting. All the events were a success with many students showing interest in our chapter. We concluded our rush functions with an information session to explain to those interested of what it means to be a brother.

Although much of the semester was focused on recruitment, we also decided to take a look back down the tracks. Along with all our other activities, Gamma Pi is beginning to prepare for its 50th Anniversary in March of 2006. This is a very special event and will be the focus of the upcoming year. The first step taken was to go through our chapter archives. We have a lot of chapter history that has not been displayed properly. Thus, we have begun to restore our archives in order to preserve our history in a more effective and aesthetic manner. Loose pictures are being put into scrap books, the existing scrapbooks are being transferred onto archival paper and we are starting to utilize digital storage. Our archives represent our past endeavors and we have gained a greater appreciation for the brothers who have laid the tracks for our future. We are anxious and excited to meet those brothers when they return to campus to celebrate 50 great years of brotherhood!

Congratulations and best of luck to those graduating in the spring and summer. See you in Lexington!!!

*-Beth A. Harrod, Corresponding Secretary, KKΨ, Gamma Pi chapter, Purdue University*

### EPSILON EPSILON GOES BACK TO HIGH SCHOOL

KUTZTOWN, Pa. - "Can I get a hot-dog!?" "I need chicken fingers and french fries!" "Can I have a piece of pizza and

a coffee!" These are just a few phrases that the tie-dyed girls of Epsilon Epsilon heard over and over again at one of our service projects this fall semester. Along with our Brothers, we helped out a local high school, Conrad Weiser, host a Cavalcade Marching Band Competition.

The CW Music Association was excited and shocked at the same time to see how many of us were there to help them. We quickly offered our services where they were needed. We played the roles of ticket takers, security, helped park busses and cars, worked in concessions, helped bring on large props and pit equipment, and anything else that needed to be done. At the conclusion of the show, we helped with tear down and even helped clean off the stands in the stadium with buckets of water.

This was an extra special service project for myself, being that I am an alum of Conrad Weiser High School. I was even able to take a quick break from the concession stand to watch them perform; something I haven't been able to do in awhile. It was a great feeling to not only be back on my high school grounds, but to be there as a sister of Tau Beta Sigma and the president of Epsilon Epsilon, offering my services. My high school band has grown a lot since I graduated four years ago. Not necessarily in numbers but in quality and education of its members. It prides me to know that the chapter took part in helping Conrad Weiser grow by helping them host their first Cavalcade Show in years!

Everyone had a great time and was very excited to have helped a local high school take their music program to a new level. Every time these girls order chicken fingers or french fries at the cafe it brings a smile to their face and has a much larger meaning than just lunch!

*-Jennifer Wolfe, Member, TBΣ, Epsilon Epsilon, Kutztown University*

See NEWS, Page 24

# Signing off

By Adam Cantley, KKΨ CFR

**W**ow, I can't believe that my time as CFR is ending. It has been nothing less than amazing to be involved with the fraternity on this level over the past two years. I don't really want to get all "sappy," but it may happen. I am certain that I learned much more than I ever shared with the chapters I visited. Being an individual who loves education, I am going to take the time to share some of the positive and negative things I have learned during my time as National Chapter Field Representative.

I have learned that I can say without a doubt we are one of the most diverse organizations in campus life across the country. I take tremendous pride in knowing that no matter what your background you can be a member of Kappa Kappa Psi. I look through my pictures and I see brothers that encompass many races from around the world, various religious groups, different sexual preferences, both genders and any other diverse trait you can possibly imagine. Kappa Kappa Psi truly represents the best in college bands from all over the country regardless of individual differences. The love of service to bands is what binds us all together and should be the center of our thoughts while working in this organization.

I learned that hazing is still a problem with our organization. I wonder how we can deal with this



problem. Student members who are found guilty of hazing apologize profusely for their actions. However, if the problem is severe enough your apologies can be in vain and you could lose your chapter. I think that individual chapter members need to start taking a proactive attitude toward this problem, instead of reacting once this becomes a problem. This may seem harsh, but all it takes is one major hazing suit to damage the entire fraternity. So I challenge you all to think about which is more important to you: hazing someone or having an increase in dues to cover higher insurance rates. Hazing someone or having a chapter at your school. Hazing someone or having Kappa Kappa Psi. The choice is clear to me. I hope it is to you, as well.

I have learned that you can laugh with your brothers and sisters like no one else. Many people have asked, "What keeps you going while you are on the road?" That answer is easy: copious amounts of caffeine. Actually, it is because I am enjoying what I am doing. You have to have fun and enjoy what you are doing with Kappa Kappa Psi/Tau Beta Sigma. If you don't enjoy it, then why are you still involved?

I have learned that there are still misconceptions about the CFR position. So let's clear up a few. Unless

the CFR is Superman or Wonder Woman, he/she can not visit all the chapters and colonies during their term. The fraternity is involved on more campuses than one CFR can handle in two years. The CFR is not a member of the National Council. He/she acts as a consultant to the council and works to help serve them. The CFR is not a student; in fact, you must have a degree to be even considered for the job. The CFR is not elected, he/she is hired. It is treated as any other job you would apply for out of college.

I can't express in words what the past two years have meant to me. Whether I slept on your couch, had dinner with your chapter or even participated in a marshmallow battle, you have all shaped the individual I am today. When people ask me what I enjoy the most about my job, I always

have the same response, "the people I meet." Brothers and sisters across the nation have shown me that we truly are a family. I guess my place in that family for the past two years was the pesky cousin that always crashed

at your house and told you what you should be doing (except hopefully not as annoying). I wish you all the best in your futures with our organizations and in life. I may not be CFR anymore, but if you ever want to find me, I am sure I won't be too hard to track down.



Adam with Carrie Shuck, Sponsor, Kappa Delta, KKΨ and Bobby the Bearcat of Northwest Missouri State University.



# National Programs

## Summary

By Michelle L. Kincheloe, KKΨ National Vice President for Programs

**K**appa Kappa Psi's National Awards and Programs showcase the finest contributions Kappa Kappa Psi makes to the band community. As an extension of my article in the Fall, 2004 Podium, this article highlights two additional Kappa Kappa Psi programs: Service Showcase and Conn Selmer University. As an active member, band director or future music educator; Kappa Kappa Psi's programs and awards positively impact band programs nationally. The success of Kappa Kappa Psi's National Awards/Programs requires each active brother to be informed and submit nominees. Feel free to contact me via e-mail at [enviromtch@kkpsi.org](mailto:enviromtch@kkpsi.org) with questions or feedback on any awards/programs.



*Information/applications for all awards and programs can be found at [www.kkpsi.org](http://www.kkpsi.org).*

### Service Showcase:

Exemplary service is the finest contribution Kappa Kappa Psi chapters and members make to college and university bands. The Service Showcase program highlights chapters providing creative and outstanding service to bands and it provides a recruiting tool for potential chapters and band directors interested in starting a chapter of Kappa Kappa Psi. Each band program receiving a Service Showcase Award at the district level receives a \$200.00 honorarium from Kappa Kappa Psi.

### Eligibility/Requirements:

- Submitting Kappa Kappa Psi chapters must meet all national obligations.
- Service project must positively impact the band program. (Adopt a Highway, work for Habitat for Humanity, etc. will not be considered).
- Submit applications annually at District Convention to include a one-page summary, including the band's profile and a description and picture of the project.

### Conn-Selmer University Scholarships:

Scholarships are available to Kappa Kappa Psi members working on a degree in music education. Conn-Selmer University is a highly motivational workshop seminar designed to support music educators preparing to begin their career. Kappa Kappa Psi awards scholarships to active members of up to \$300.00 to cover registration cost / travel assistance. Visit [www.connselmeru.com](http://www.connselmeru.com) for dates and information on Conn-Selmer University.

### Matching Grants Program Update:

As highlighted in the Fall, 2004 Podium, Kappa Kappa Psi's Matching Grant Program assists college and university band in funding guest conductors and performing artists. Iowa State University recently received a Matching Grant for the "Cyclone" Honor Band Festival held on the ISU campus in Ames, Iowa, on February 4-5, 2005. This student-centered event included a performance by two honor bands and a performance by the ISU Wind Ensemble. The guest clinicians included Thomas Verrier, Director of the Wind Ensemble at Vanderbilt University and Al Sergel, former Director of Bands at Northwest Missouri State University. Regarding the Festival that is partially funded through Kappa Kappa Psi's Marching Grant program, Dr. Michael Golemo, Director of Bands at ISU, states, "what I enjoy most about the festival is that it truly helps our band members, music education students, and high school band directors - through the workshops, rehearsal observations, master classes, and performances with nationally known guest conductors."

Band directors at accredited U.S. college/university can apply for up to \$500.00 in funding. The following guidelines apply:

- Submitted by July 1st or at least 30 days prior to the event date (event must include at least one performance).
- Application includes how the event demonstrates:
  - Student focus, including a clear definition of how the event / session improves teaching / learning through workshops, masters classes, clinics, etc. provided by the guest conductor / performing artist;
  - How the project showcases the achievements of the guest conductor and/or performing artist; and
  - Institutional resources appropriate to the goals of the project are available and committed.

### Fraternity and Sorority Statistics

#### Kappa Kappa Psi:

Total Membership:	_____	3258
Chapters:	_____	170
On Probation:	_____	8
On Suspension:	_____	0

#### Tau Beta Sigma:

Total Membership:	_____	2456
Chapters:	_____	133
On Probation:	_____	2
On Suspension:	_____	2

As of January 27, 2005



*Salutes*

## *The Chapter Leadership* **Finalists**

### *Tau Beta Sigma*

Delta, University of Oklahoma

Theta, University of Cincinnati

Psi, University of Arkansas

Omega, University of Arizona

Alpha Delta, Ohio University

Gamma Kappa, University of Connecticut

Gamma Mu, Ohio Northern University

Gamma Omega, University of Pittsburgh

Eta Alpha, Syracuse University

Eta Delta, Howard University

Theta Theta, Henderson State University

Theta Lambda, Auburn University

### *Kappa Kappa Psi*

Lambda, University of Arkansas

Nu, University of Michigan

Omicron, West Virginia University

Beta Omicron, Arizona State University

Delta Omicron, University of Connecticut

Epsilon Psi, Southwest Missouri State University

Iota Kappa, Boise State University

Iota Pi, California Polytechnic State University,  
San Luis Obispo

Iota Omega, Iowa State University

Kappa Delta, Northwest Missouri State University

Kappa Mu, University of Georgia

Kappa Chi, Albion College

## **Congratulations!**

## TBΣ Friends of the Trust

### Pearl Patron

Wava Banes Henry

David Oakley

### Sisterhood Supporter

Patsy Hejl

Linda Rae

### Century Club

Carol Louise Kruse

Susan Lodal

Jean Newman

Leeann Jones Weiser

### Tributes

--In memory of Frederick Fennell, a leader of the band world, who will be missed by all.

--To welcome National Publications Manager Marcus Brown to the Headquarters staff.

--In honor of David Oakley, National President, KKΨ (81-83), for his continued support of TBΣ.

--In honor of Marla Lewiski on the birth of her twins.

--To welcome the colony at Capital University in Columbus, Ohio.

--To welcome the Epsilon Eta colony at Tyler Junior College in Tyler, Texas.

--To welcome the Alpha Gamma colony at Kent State University in Kent, Ohio.

--In honor of Catherine Seaton for her years of service to the NAA and TBΣ. We wish her luck in her new endeavors.

--To welcome Amanda Grace to the NAA Board. We wish her luck in her position.

--In memory of Adam Cantley's father, Ronald Cantley.

--In memory of Alan Harriet's father, Melvin Harriet.

--In memory of Kevin Nelson's grandfather, Reuben Nelson.

### ***Tau Beta Sigma Board of Trustees***

--In honor of Laura Hayes, Beta Chapter.

***Carol Blain***

--In honor of Stacy Sabraw.

***Timothy J. Greenwell, Jr.***

--In appreciation of Carolyn Steckel's dedication to TBΣ.

***Dixie Mosier-Greene***

--In appreciation to the Tau Beta Sigma District Counselors and Officers.

***Wava Banes Henry***

--In honor of Michael Lee, honorary member of TBΣ.

***Leslie McClure***



Pullout  
Section

• KAPPA KAPPA PSI & TAU BETA SIGMA •

# LK *in* 2K5

2005 NATIONAL CONVENTION • LEXINGTON, KY

2005  
National Convention  
July 26-31



Lexington, KY

# BLUEGRASS COUNTRY



# Kappa Kappa Psi & Tau Beta Sigma



## 2005 National Convention Information

Dates: Sunday, July 24 - Tuesday, July 26 - National Intercollegiate Band  
Tuesday, July 26 - Sunday, July 31 - National Convention

Location: Hyatt Regency Lexington  
401 West High St.  
Lexington, KY 40507  
(859) 253-1234

NIB Application Deadline: Monday, April 4

Convention Registration Deadline: Wednesday, June 1 (postmark)

Convention Registration Fee: \$115

Hotel Reservation Deadline: Sunday, June 1

NIB Chair Auditions: Sunday, July 24

Convention Business Begins: Tuesday, July 26

NIB Concert: Tuesday, July 26, 8 pm

Banquet: Friday, July 29

Special Events: National Intercollegiate Band Concert  
Educational Forums, including Special Speakers  
Reading Band & Auxiliary Clinic  
Convention Banquet  
Announcement of 2007 National Convention Site

**DO NOT SEND CASH**  
You may Pay by  
check, Visa, or MasterCard

Late Registration: All registrations postmarked after June 1 MUST be accompanied by a \$25 late fee. On-site registrations will be charged a \$25 surcharge.

Lodging and Meals: Lodging and most meals are not included in the convention registration fee. They are the financial responsibility of the convention participant. Make your hotel reservations directly with the Hyatt Regency in Lexington. Please use the reservation form included in the convention packet. The hotel room rate is \$99 plus 12.4% tax, for up to four persons in a room. Convention rates will apply 3 days prior to and 3 days after convention. The names of everyone to be registered in the room should be listed on the hotel reservation form.

Parking: Parking is FREE in parking lot located across the street from the hotel.

Airport Transportation: FREE airport shuttle service from the Blue Grass Airport is available by calling the Hyatt Regency of Lexington at (859) 253-1234





# Kappa Kappa Psi & Tau Beta Sigma



## The Hyatt Regency Hotel Reservation Form

EVENT: Kappa Kappa Psi & Tau Beta Sigma National Convention  
 DATES: July 26 - 31, 2005  
 ROOM RATE PER NIGHT: \$99 + 12.4% tax (flat rate for single, double, triple or quad)

ALL RESERVATIONS MUST BE RECEIVED BY THE HOTEL JUNE 1, 2005

In order to guarantee your room reservation, your request must be accompanied by a deposit of one night's rental plus tax or accepted credit card and signature. We regret that we cannot hold your reservation without an advance deposit or credit card guarantee.

Please reserve \_\_\_\_ room(s) for \_\_\_\_ person(s)

Do you require : \_\_ Nonsmoking \_\_ Smoking \_\_ Accessible \_\_ Roll-away \_\_ Crib  
(Room type requests are honored on availability basis only and are NOT guaranteed)

Please PRINT all information (except signature) in BLOCK CAPITAL LETTERS!

Name: \_\_\_\_\_ Address: \_\_\_\_\_

City: \_\_\_\_\_ State: \_\_\_\_\_ Zip: \_\_\_\_\_

Phone: (work) \_\_\_\_\_ (home) \_\_\_\_\_

Will Arrive On: \_\_\_\_\_ Will Depart On: \_\_\_\_\_  
(day) (date) (time) (day) (date) (time)

Credit Card Type: \_\_ American Express \_\_ MasterCard \_\_ Diners Club \_\_ Visa \_\_ Carte Blanche  
\_\_ Discover \_\_ JCB

Credit Card Number: \_\_\_\_\_ Expiration Date: \_\_\_\_\_

Card Holder's Name: \_\_\_\_\_

Card Holder's Signature: \_\_\_\_\_

Name(s) of other room occupant(s): \_\_\_\_\_

I understand that reservations not guaranteed will be subject to cancellation 7 days prior to arrival and that all guaranteed reservations will be held until 12 midnight of the indicated arrival date. I further understand that I am liable for one night's room deposit and tax (which will be deducted from my deposit or billed through my credit card) in the event that I do not arrive or cancel by midnight 72 hours prior to the arrival date indicated.

Signature: \_\_\_\_\_

<p>Fax or mail reservation form to:</p> <p><b>The Hyatt Regency</b></p> <p>Lexington</p> <p>401 West High Street Lexington, KY 40507</p> <p>Tel: (859) 253-1234 Fax: (859) 233-7974</p>	<p>Note: If you make your reservation by phone, be certain to identify yourself as part of the Kappa Kappa Psi / Tau Beta Sigma National Convention to ensure you get the convention room rate.</p>
---	---



# Kappa Kappa Psi & Tau Beta Sigma



## 2005 National Convention Registration

NAME \_\_\_\_\_  Male  Female

CHAPTER \_\_\_\_\_  KKΨ  TBΣ

SCHOOL \_\_\_\_\_

SUMMER ADDRESS \_\_\_\_\_

City \_\_\_\_\_ State \_\_\_\_\_ Zip \_\_\_\_\_ Phone \_\_\_\_\_

MEMBERSHIP STATUS (Check One)  
 Active  Conditional  Associate  Honorary  Life  Alumni

READING BAND (Check appropriate boxes. Percussionists need to bring their own mallets.)  
 Yes, I will be participating  Yes, I will need the following large instrument: \_\_\_\_\_

AUXILIARY CLINIC (ALL equipment provided.)  Yes, I will be participating  
BANQUET MEAL SPECIAL REQUIREMENTS  
 No red meat  Vegetarian  Other (Please specify)

- EDUCATIONAL FORUMS
- Conductor/Composer Workshop (Joint Open)
  - TBΣ Diva Jazz Seminar
  - Dr. Lori Ebert - Gender and Alcohol Presentation
  - Dr. Tim Lautzenheiser - joint and separate workshops

**REGISTRATION FEE: \$115 (Nonrefundable after June 1)**  
Fee includes registration, banquet, and Saturday event

METHOD OF PAYMENT:  Check (payable to KKΨ/TBΣ)  Credit Card

Credit Card Orders

Name on Card \_\_\_\_\_  Visa  MasterCard  
Card # \_\_\_\_\_ Exp. Date \_\_\_\_\_

NHQ Auth \_\_\_\_\_ NHQ Receipt \_\_\_\_\_ NHQ Initials \_\_\_\_\_

Mail one copy of this form WITH your registration payment to:  
Kappa Kappa Psi & Tau Beta Sigma, National Headquarters, P.O. Box 849, Stillwater, OK 74076-0849  
Credit card registrations can be faxed to 405-372-2363  
A late charge of \$25 will be added to all registrations postmarked after June 1





# Kappa Kappa Psi & Tau Beta Sigma



## 2005 Chapter Delegate Form

INSTRUCTIONS: This CHAPTER DELEGATE FORM must be submitted to the National Headquarters on or before June 1, 2005. You MUST have a current membership card to be seated as a delegate.

Please PRINT all information (except signatures) in BLOCK CAPITAL LETTERS.

CHAPTER: \_\_\_\_\_  KKΨ  TBΣ (Check one) DISTRICT: \_\_\_\_\_

SCHOOL: \_\_\_\_\_ E-MAIL: \_\_\_\_\_

OFFICIAL DELEGATE: \_\_\_\_\_

Name & Summer Mailing Address

	City	State	Zip	Telephone	E-mail
Preferred Committee Assignment: _____					

1ST ALTERNATE:

Name & Summer Mailing Address

	City	State	Zip	Telephone	E-mail
Preferred Committee Assignment: _____					

2ND ALTERNATE:

Name & Summer Mailing Address

	City	State	Zip	Telephone	E-mail
Preferred Committee Assignment: _____					

3RD ALTERNATE:

Name & Summer Mailing Address

	City	State	Zip	Telephone	E-mail
Preferred Committee Assignment: _____					

*A list of committees is available at [www.kkytbs.org/natconv.html](http://www.kkytbs.org/natconv.html)*

### IMPORTANT REMINDERS

- Each delegate or alternate delegate MUST have a valid membership card.
- The form fulfills the National Constitution provision requiring a signed official statement verifying selection as a delegate or alternate delegate. Send an e-mail to [kkytbs@kkytbs.org](mailto:kkytbs@kkytbs.org) or call the National Headquarters at (405) 372-2363 should the name, address, or phone number of the delegate or alternate delegate change.

### REQUIRED SIGNATURES

Chapter President

Chapter Sponsor

To be returned to the National Headquarters by JUNE 1, 2005.



# Kappa Kappa Psi & Tau Beta Sigma

## LK *in* 2K5



# 2005 Letter of Proxy

INSTRUCTIONS: The National Councils of ΚΚΨ and ΤΒΣ would like every chapter to complete a proxy form in the event they are unable to send a representative to the convention. This will ensure that your chapter is represented by the chapter of your choice. Please return this form by June 1, 2005.

Please PRINT all information (except signatures) in BLOCK CAPITAL LETTERS.

CHAPTER: \_\_\_\_\_  ΚΚΨ  ΤΒΣ (Check one)

DISTRICT: \_\_\_\_\_

SCHOOL: \_\_\_\_\_ E-MAIL: \_\_\_\_\_

Our chapter will/will not be sending a representative to the Kappa Kappa Psi/Tau Beta Sigma 2005 National Convention. We authorize the following chapter to sit in proxy for our chapter:

Chapter: \_\_\_\_\_ District: \_\_\_\_\_  
School: \_\_\_\_\_ E-mail: \_\_\_\_\_

In the event the chapter listed above is unable to sit in proxy for your chapter, please list below three other choices for your proxy:

1st Alternate Proxy: \_\_\_\_\_ District: \_\_\_\_\_

Chapter name

School: \_\_\_\_\_ E-mail: \_\_\_\_\_

2nd Alternate Proxy: \_\_\_\_\_ District: \_\_\_\_\_

Chapter name

School: \_\_\_\_\_ E-mail: \_\_\_\_\_

3rd Alternate Proxy: \_\_\_\_\_ District: \_\_\_\_\_

Chapter name

School: \_\_\_\_\_ E-mail: \_\_\_\_\_

Signed: \_\_\_\_\_ Date: \_\_\_\_\_

Chapter President

Return this form by JUNE 1, 2005, to:

Kappa Kappa Psi / Tau Beta Sigma National Headquarters,  
P.O. Box 849 Stillwater OK, 74076-0849





# Kappa Kappa Psi & Tau Beta Sigma



## 2005 National Intercollegiate Band Registration Form

**INSTRUCTIONS:** This registration form and your audition tape [standard audio cassette tape or CD only] should be post-marked no later than April 4, 2005. Tapes or CDs should be clearly marked with your name, school, instrument, and compositions selected. Only one audition may be submitted per tape or CD.

Please PRINT all information (except signatures) in BLOCK CAPITAL LETTERS!

NAME: \_\_\_\_\_ Male \_\_\_ Female \_\_\_  
(Last) (First) (M.I.)  
College or University you are attending: \_\_\_\_\_ KKΨ \_\_\_ TBΣ

YOUR SCHOOL ADDRESS: \_\_\_\_\_  
(City) (State) (Zip) (Phone)

YOUR PHONE: ( ) \_\_\_\_\_

YOUR SUMMER ADDRESS: \_\_\_\_\_  
(City) (State) (Zip) (Phone)

E-Mail : \_\_\_\_\_  
Major: \_\_\_\_\_ Instrument: \_\_\_\_\_

Classification: Fr. So. Jr. Sr. Gr. (circle one)

National Intercollegiate Band chair auditions will be held on Sunday July 24, 2005, at the Hyatt in Lexington, KY. The NIB concert will take place at the Lexington Opera House. Lodging for three nights (Sunday, Monday, and Tuesday) will be provided for all participants.

### Guidelines for Application

1. Submit a stereo cassette tape or CD with not less than 5 or more than 10 minutes of you performing at least two contrasting selections on your instrument. One selection should be technical in nature with enough tempo and complexity to demonstrate your facility. The other selection should be lyrical in a way that will demonstrate your musical sensitivity and phrasing. Percussionist should include performances on at least three instruments. (Timpani, snare drum and a mallet instrument are preferred.)
2. The recording should be unedited. It can be performed with or without accompaniment.
3. The recording should be high enough in electronic quality as to not distract from your performance.
4. Tapes or CDs must be clearly marked with your name, school, instrument(s) and compositions selected. Only one audition may be submitted per recording.
5. Application Form and tape or CD must be postmarked by April 4, 2005, and sent to the National Headquarters.
6. You will be notified of your audition results by early May. If accepted, you will receive a detailed information package and questionnaire to be completed and returned.

Please do not audition unless you are positive you will be able to participate. We do not appoint alternates. If you drop out after you have been accepted, you will alter the balance of the ensemble and be unfair to someone who would have been chosen.

Thank you so much for your cooperation.

SUBMIT AUDITION RECORDINGS AND THIS FORM TO:  
Kappa Kappa Psi & Tau Beta Sigma  
ATTN: NIB 2005 Auditions  
National Headquarters P.O. Box 849 Stillwater, OK 74076-0849

If selected to perform in the NIB, I will schedule and fund my trip to Kentucky. If selected, I will be aware that I have been chosen instead of someone else. I will, therefore, be in Lexington on Sunday, July 24, 2005, fully prepared to participate. I realize that no Kappa Kappa Psi or Tau Beta Sigma will be available to compensate for my travel and meal expenses.

Signature \_\_\_\_\_ Date \_\_\_\_\_

**GROWING INSIDE AND OUT**

ASHLAND, Ohio. -The word at Ashland this year is growth. We had a great group come in last year and they have really stepped up. Not only have they done their part but they have done it with smiles on their faces. A strange thing that has happened this year is that the number for first year members versus second and third year members are tied. This is a potentially scary thing, but our chapter has really bonded together. The good news is that we are only losing two seniors, so next year we will be even stronger. Bids for the new class go out soon, and we are excited about what is in store with the perspective members, even though we do not yet know who they are. We are expecting a large class from the recent bids and a high quality one at that. Not only are we looking for growth within our own numbers, but also within the band numbers. This year we had a great turn out for our AUMB (Ashland University Marching Band) Preview Day. This is a day in which we invite juniors and seniors from area high schools to come and check out the university and more importantly the band. We had twenty seven responses, breaking all previous years records, and 23 people actually attend. It was a lot of fun for both band members and the high schoolers to interact.

Our growth has not just been focused externally but also internally. We have had brotherhood activities to encourage growing closer together. We have gone ice skating, played putt-putt and played volleyball as an intramural team on campus. We have discovered that we are not the best athletes, but we definitely have the most fun. It is not only during the activities that we have fun. Even in meetings we are able to laugh and still get the job done. So far this has been a great year for our chapter and it looks like the rest of the year is going to be even better.

*Bethel Schiefer, Corresponding Secretary, KKΨ, Theta Zeta, Ashland University*

**A MAN, A DREAM, A LEGACY**  
**Brother Ronald J. Sarjeant Retires.**

ORANGEBURG, S.C. - The man many regard as the sound of the South Carolina

State University's "Marching 101" Band has retired. For 34 years, "Sarje," as he is affectionately known, used the lessons he learned as a student under the tutelage of Brother Dr. William P. Foster at Florida A & M University to create a style that would make him a legend. Upon graduation in 1970, Mr. Sarjeant became the Assistant Director of Bands at Tuskegee University and later became Director of Bands. While at Tuskegee, Mr. Sarjeant had the pleasure of serving as band director and mentor to a group of young men who would become some of the most revered entertainers in music.

In 1976, Mr. Sarjeant left Tuskegee to become the Director of Bands at South Carolina State University (SCSU) where he served for 28 years until his retirement in June 2004. With innovations such as the four corners, big band, and the diagonal march right (DMR); Mr. Sarjeant developed the SCSU "Marching 101" Band into one of the top marching band programs in the country. Also, during his tenure, Mr. Sarjeant served as advisor to the Zeta Eta Chapter of Kappa Kappa Psi and the Epsilon Chi Chapter of Tau Beta Sigma. From 1993 to 2000, Mr. Sarjeant served the fraternity as a Southeast District Co-Governor. He was recently inducted into the South Carolina State University Hall of Fame. Outside of his affiliation with Kappa Kappa Psi and Tau Beta Sigma, Mr. Sarjeant belongs to many other professional music societies and fraternities as well as Alpha Phi Alpha Fraternity, Inc.

A loyal and faithful fraternity member for 35 years, Mr. Sarjeant was initiated into the fraternity in the fall of 1969 through the Delta Iota Chapter located at Florida A & M University. He and his wife Barbara are the proud parents of two; Erin Sarjeant and Bro. Wryan Sarjeant (Zeta Eta Spring '04.)

*Daryl B. Brockington, Chapter Sponsor, KKΨ, Zeta Eta, South Carolina State University*

**A NIGHT AT THE DIXIE CLASSIC FAIR**

WINSTON-SALEM, N.C. - It is no coincidence that with service to the college or university band, there comes service to the college or university. Most musical ensembles are called upon by their respective institutions to perform at pep rallies, ceremonies, and special events that warrant

ambiance. Most of these institutions also call on musical ensembles to represent them within the community that surrounds it. The brothers of the Kappa Lambda Chapter are familiar with this. Having members who are involved in the Jazz Band, Concert Band, Wind Ensemble, Marching and Pep Bands really spread our chapter thin.

In the quest to find new and innovative projects for the chapter, one in particular has surfaced. The Brothers of the Kappa Lambda Chapter of Kappa Kappa Psi spent an evening at the Dixie Classic Fair in Winston Salem, NC, on October 11, 2004. The Dixie Classic Fair is an annual event that comes to Winston Salem every October. It features a variety of foods, games, and attractions for people of all ages. After getting permission to miss band practice, 10 brothers made the trip across town to the annual fair.

The brothers voluntarily chaperoned members of the Winston Salem Special Populations Unit around the fair. Many of the handicapped do not get the chance to attend due to lack of transportation and chaperones. Participants of the Special Populations Unit consist of senior adults and persons with disabilities. Some of the members are visually impaired, quadriplegic, paraplegic, and have Down syndrome. The Winston-Salem Transit Authority provided transportation and the brothers provided the chaperoned supervision. Each brother was paired with a different participant, offering companionship to them for the evening.

At the beginning of the event, many brothers were uneasy about what was to happen but by the end of the night, they all were talking about how much fun they had and how they could not wait to do it again. The want to have an image above and beyond the likes of others is an issue we have all faced. We want to promulgate our names as if the entire world could hear it and understand its entire meaning, but we all know that hard work and dedication is the only way to success. The Kappa Lambda Chapter of Kappa Kappa Psi has put in the hard work and is now reaping their reward.

In the past couple of years, the chapter has turned around and with that turn comes a group of well-rounded, community-oriented individuals that we hope will make the band, university and national organizations proud.

*W. Tyrik Miller, Member, KKΨ, Kappa Lambda, Winston-Salem State University*



# Meet the Conductor and Composer

# NMB



## Conductor Michael Haithcock

MICHAEL HAITHCOCK assumed his duties as Director of Bands and Professor of Music (conducting) at the University of Michigan in August 2001. Prior to this appointment, he served Baylor University as Assistant Director of Bands from 1978-1982 and Director of Bands from 1982-2001. As Director of Bands and Professor of Conducting, Mr. Haithcock conducted the internationally acclaimed Baylor Wind Ensemble and the faculty-student new music ensemble "Spectrum." In addition, he was responsible for the graduate program in Wind Conducting as well as the administration of Baylor's diverse collegiate band program.

Professor Haithcock served as director of the Baylor University Golden Wave Marching Band from 1982-1990. He also led the Baylor Courtside Players basketball bands during that period in addition to his other conducting and teaching responsibilities. Professor Haithcock received the 1993-1994 Baylor University Outstanding Creative Artist Award in recognition of his artistic leadership and achievement. Under Haithcock's guidance, the Baylor Wind Ensemble received a wide array of critical support for its high artistic standards of performance and repertoire. Professor Haithcock is in demand as a guest conductor and as a resource person for symposiums and workshops in a variety of instructional settings.

In 1999 he was selected to conduct the world premiere of Daron Hagen's *Bandanna*, an opera for voice and wind band, commissioned by the College Band Directors National Association. Active in commissioning and premiering new works, Haithcock has earned the praise of both composers and conductors for his innovative approaches to developing the wind ensemble repertoire. A graduate of East Carolina University, where he received the 1996 Outstanding Alumni Award from the School of Music, and Baylor University, Haithcock has done additional study at a variety of conducting workshops, including the Herbert Blomstedt Orchestral Conducting Institute. His articles on conducting and wind literature have been published by *The Instrumentalist*, *The School Musician* and *The Southwest Music Educator*.

Professor Haithcock is active in a variety of professional organizations, including the music honor society Pi Kappa Lambda, the American Bandmasters Association, the College Band Directors National Association (currently National President), the Conductors Guild, the Music Educators National Conference, the Texas Music Educators Association and the World Association of Symphonic Bands and Wind Ensembles.



## Composer Philip Sparke

PHILIP SPARKE was born in London and studied composition, trumpet and piano at the Royal College of Music, where he gained an ARCM. It was at the College that his interest in bands arose. He played in the College wind orchestra and also formed a brass band among the students, writing several works for both ensembles. At that time, his first published works appeared - *Concert Prelude* (brass band) and *Gaudium* (wind band.) A growing interest in his music led to several commissions, his first major one being for the Centennial Brass Band Championships in New Zealand - *The Land of the Long White Cloud*. Further commissions followed from individual bands, various band associations and the BBC, for whom he three times won the EBU New Music for Band Competition (with *Slipstream*, *Skyrider* and *Orient Express*.) He has written for brass band championships in New Zealand, Switzerland, Holland, Australia and the UK, twice for the National Finals at the Albert Hall, and his test pieces are constantly in use wherever brass bands can be found.

A close association with bands in Japan led to a commission (*Celebration*) and an eventual recording of his music with the Tokyo Kosei Wind Orchestra. This opened the door worldwide to his wind band music and led to several commissions, particularly from the United States. In 1996, the U.S. Air Force Band commissioned and recorded *Dance Movements*, which won the prestigious Sudler Prize in 1997. His conducting and adjudicating activities have taken him to most European countries, Scandinavia, Australia, New Zealand, Japan and the USA. He runs his own publishing company, Anglo Music Press, which he formed in May 2000. In September 2000 he was awarded the Iles Medal of the Worshipful Company of Musicians for his services to brass bands.



# ΚΚΨ Capital Development Program

All donations to Kappa Kappa Psi are tax deductible to the extent of IRS Regulations.

## Kappa Kappa Psi National Honorary Band Fraternity

### Defined Contribution Program

Up to \$ 99	Friend of Kappa Kappa Psi
\$ 100	Century Club
\$ 250	First Chair Club
\$ 500	Director's Club
\$ 1,000	President's Club
\$ 5,000	William A. Scroggs Founder's Club

### Life Membership

Alumni and Honorary members are entitled to Life Membership for \$ 250 (application available at <http://www.kkpsi.org>).

### Support for the National Programs

- Scholarships
- Leadership Education
- Recruiting Activities
- Commissioning Projects
- National Intercollegiate Band
- Archives Restoration
- Unrestricted Gift

The National Programs of Kappa Kappa Psi (Scholarships, Leadership Education, etc.) can be supported by any of the following giving options:

- Cash Gifts – tax deductible according to the donor's tax bracket.
- Bequests – bequests include gifts of cash, securities, or other marketable property designated in a will and are exempt from federal estate taxes. A specific bequest leaves certain property, or a percentage of the estate to the Kappa Kappa Psi Corporation.
- Life Insurance – gifts made be made to the fraternity by naming the Kappa Kappa Psi Corporation as owner or as beneficiary.
- Appreciated Property – an alternative to a cash gift is a donation of appreciated securities, such as stocks and bonds.

*Please contact Alan Bonner at the National Headquarters (800-543-6505) or Ken Corbett (803-777-7313) if you have any questions.*

Detach the form below and mail with your contribution.

Please return this form with your contribution to:

**Kappa Kappa Psi Fraternity**  
**PO Box 849**  
**Stillwater, OK 74076-0849**

*If you would like your gift directed to a specific area, please indicate the area on the bottom portion of this form.*

Name: \_\_\_\_\_ Chapter \_\_\_\_\_

Address: \_\_\_\_\_

City: \_\_\_\_\_ State \_\_\_\_\_ ZIP \_\_\_\_\_

Telephone: (H) \_\_\_\_\_ (W) \_\_\_\_\_

E-Mail Address: \_\_\_\_\_

My contribution in the amount of \$ \_\_\_\_\_ advances the mission of Kappa Kappa Psi. My check is enclosed. Please make payable to: KKPsi Trust Fund

Please charge my credit card:  Visa  MasterCard Card Number: \_\_\_\_\_ Amount \$ \_\_\_\_\_ Expiration Date \_\_\_\_ / \_\_\_\_ Signature \_\_\_\_\_

I would like to contribute \$ \_\_\_\_\_ over a period of  1 year or  2 years (check one)



# Be a Part of the Legacy of Tau Beta Sigma!

The Tau Beta Sigma Trust Fund supports valuable, long-term programs of our Sorority, including the National Intercollegiate Band, Commissioning Program, Women In Music Speaker Series, scholarships and leadership development.

Now is your chance to make a difference! All supporters of Tau Beta Sigma are invited and encouraged to sustain and preserve the mission of the Sorority by participating in the Tau Beta Sigma Trust Fund. Each gift will be recognized in *The PODIUM*.

YES! I want to contribute to the Tau Beta Sigma Trust Fund.

**Friends Of The Trust** (Select your personal gift level.)

<input type="checkbox"/> Century Club	\$100-\$249
<input type="checkbox"/> Sisterhood Supporter	\$250-\$499
<input type="checkbox"/> Red Rose Contributor	\$500-\$999
<input type="checkbox"/> Pearl Patron	\$1,000-\$2,499
<input type="checkbox"/> Blue and White Benefactor	\$2,500-\$4,999
<input type="checkbox"/> Wava Banes Henry Founder	\$5,000 or more

**Tributes And Memorials**

Mark milestones for your sisters and your chapter by donating in the form of a tribute or memorial. Any amount is appreciated, but donations of \$10 or more will be recognized with a special acknowledgement card to the honoree.

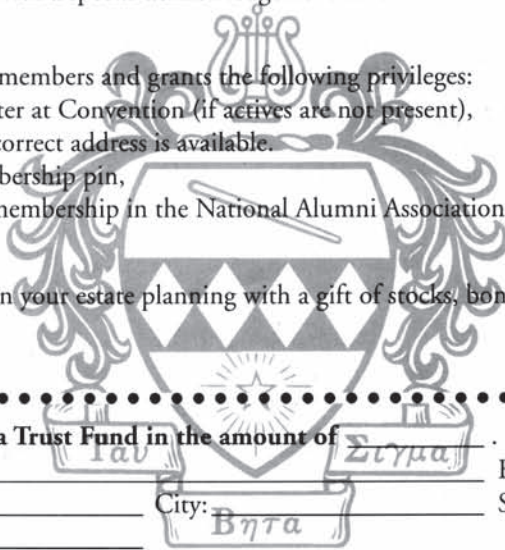
**Life Membership** (\$250)

Life membership is for alumni or senior members and grants the following privileges:

- Serve as proxy for your former chapter at Convention (if actives are not present),
- Receive *The PODIUM* as long as a correct address is available.
- Receive a Tau Beta Sigma Life Membership pin,
- Receive a complimentary one-year membership in the National Alumni Association.

**Bequests to the Sorority**

You may choose to include the Sorority in your estate planning with a gift of stocks, bonds, real estate, insurance or cash. (Contact the National Headquarters for information.)



Please accept my gift to the Tau Beta Sigma Trust Fund in the amount of \_\_\_\_\_.

Name: \_\_\_\_\_ E-mail: \_\_\_\_\_  
 Address: \_\_\_\_\_ City: \_\_\_\_\_ State: \_\_\_\_\_ ZIP: \_\_\_\_\_  
 Telephone: \_\_\_\_\_

**Complete the following if the gift is a Tribute/Memorial:**

This gift is a Tribute/Memorial (circle one) to/for (circle one) \_\_\_\_\_  
 in honor/memory of \_\_\_\_\_

**Please send acknowledgement to:**

Name: \_\_\_\_\_ E-mail: \_\_\_\_\_  
 Address: \_\_\_\_\_ City: \_\_\_\_\_ State: \_\_\_\_\_ ZIP: \_\_\_\_\_  
 Telephone: \_\_\_\_\_

(Use a separate sheet, including your name, for additional Tributes and/or Memorials and attach to this page.)

**Method of Payment:**

- Check Enclosed. Make check payable to Tau Beta Sigma Trust Fund.  
 Credit Card:  VISA  MasterCard  
 Card Number: \_\_\_\_\_ - \_\_\_\_\_ - \_\_\_\_\_ - \_\_\_\_\_ Expiration Date (MM/YY): \_\_\_\_ / \_\_\_\_  
 Name on card: \_\_\_\_\_

All contributions are tax deductible and may qualify for corporate matching funds.

**Send Trust Fund contributions to:**

Tau Beta Sigma Sorority Trust Fund, P.O. Box 849, Stillwater, OK 74076-0849  
 800-543-6505



# Kappa Kappa Psi and John Philip Sousa

By Dr. Michael Golemo  
Board of Trustees Member and Past National President  
Kappa Kappa Psi

Nov. 6, 2004, marked the 150th anniversary of the birth of America's "March King," John Philip Sousa. As this date fell on a Saturday, many college and university marching bands dedicated their halftime shows to Sousa by performing some of his best known compositions: *The Thunderer*, *Semper Fidelis*, *The Liberty Bell*, *El Capitan* and of course, *The Stars and Stripes Forever*.

Sousa was the icon of his era and was to the march what Johann Strauss was to the waltz. Yet he was much more than a prolific composer of marches. He was an entertainer, a true patriot, a deeply religious man and had a profound impact on the quality and development of bands. Sousa transformed the United States Marine Band from a mediocre group to a first-rate ensemble; he attempted to standardize the instrumentation of the concert band; he toured the world with his polished civilian band; he championed the rights of composers and performers; he enriched the repertoire through his numerous compositions and transcriptions; he was a pioneer of the American musical theatre and he gave freely of his time to help nurture the growth of the school band movement. All of this was done in a deliberate plan to help raise America's artistic standards.

In an era prior to telephones, radio and even silent movies; Sousa provided quality music to towns and cities across the world. When Sousa's band came to your town, schools and businesses closed for the matinee performance. People flocked to the concerts from miles around – you knew his name from player piano rolls and countless pieces of sheet music. Sousa was simply unsurpassed as the world's most popular musician.

Sousa was also a member of Kappa Kappa Psi. He holds membership #25 from the Delta chapter at the University of Oklahoma, becoming an honorary member on Jan. 21, 1922. At this time there were only four chapters of Kappa Kappa Psi, a then-fledgling fraternity that was barely two years old.

Scott P. Squyres, a member from the Delta Chapter, served as the second Grand (National) President (1922-1926) of Kappa Kappa Psi. The year following Sousa's death, in the May, 1933, edition of *The Baton* (the predecessor to *The PODIUM*), Squyres recalled the circumstances and details of presenting Sousa with an honorary membership:

"...it was my good pleasure as Grand President of the Fraternity to invite Mr. Sousa to be the guest of the Delta Chapter and also the Alpha Chapter at a special dinner given in his honor at the Huckins Hotel in Oklahoma City. Brother Sousa graciously accepted the invitation in answer to my telephone call to him in Waco, Texas, where he was then giving a concert.

"We wanted to make him an Honorary Member of our Fraternity but we hardly knew just how to proceed. Most of us had experience in rushing and pledging men in college but we had never had the experience of pledging a great musician to our Fraternity and to initiate him into the innermost sanctums..."

"...Brother Robertson brought the car to the hotel and came in and we had a longer talk with Brother Sousa. I extended an invitation to drive with us through the city for the exercise and pleasure of seeing our biggest city of the state. He accepted our invitation and together with

two of his lady soloists we drove about the city before the matinee concert.

"...While we were driving I was doing all the thinking I could as to how to approach him with an invitation to become a pledge to our Fraternity. Delta Chapter had already voted him in but he didn't know it. I was sitting in the front seat with Brother Robertson and half turning around to talk to Brother Sousa in the rear seat with his soloists. I talked to him about everything I could think of; then I talked to him about college fraternities and music fraternities in particular. Then I asked him if he was a member of an honorary college musical fraternity. He said he was not a member of any such fraternity, then I asked him if he had any reason why he could not belong to a college musical fraternity and he told me there wasn't any





reason why he could not belong. Then, it was my privilege to say to him that we had unanimously voted to take him in as a member of Delta Chapter. He pleasingly accepted the invitation and we arranged for the initiation after the matinee concert and before the evening concert. He was happy and showed much enthusiasm and gratitude for being recognized by college men and our Fraternity.

"We explained to him the Kappa Kappa Psi was an honorary band fraternity and was the only national organization of its type in the country.

"For the matinee concert he gave to Brother Robertson and myself a complimentary pass which we were pleased to have because it came from Brother Sousa direct and in person. Shortly after the concert we drove about the city some more, and arrived at the Huckins Hotel and the appointed hour for the initiation ceremony. The brothers of Alpha Chapter had arrived and Brother Lehrer of Delta Chapter and Brother Makovsky ("Boh") of Oklahoma A&M College (now Oklahoma State University) were present for the ceremony.

"We went through the ritualistic work and gave Brother Sousa the obligation and presented him with the jeweled badge of Kappa Kappa Psi. Shortly after we proceeded to the banquet room in the Huckins Hotel and gathered about a great round table for the dinner. The President of the University of Oklahoma came in and greeted Brother Sousa and remarked that Delta Chapter and the University of Oklahoma Band would soon have a real fine band if they kept on pledging men like Brother Sousa. Everyone had a splendid time because our guest and newest member of the Fraternity was a good entertainer and was easily the life of our little party. That evening he remarked the following:

"You boys are the ones who will carry on the work started by the old masters, it is up to you, and your fraternity has the field almost exclusively, to promote music and make all who listen appreciate."

"That has been the theme and has meant much to the Fraternity as an inspiration to carry on in a bigger and finer way.

"At the evening concert Brother Sousa proudly wore his Kappa Kappa Psi badge on his uniform and it was our pleasure to be with him until his train left early that morning. We talked over many things during the almost 24 hours we had the pleasure of being with him. He gave us encouragement in every way.

"During subsequent years, Brother Sousa's interest never waned in the Fraternity. He was entertained by

...your fraternity has the field almost exclusively, to promote music and make all who listen appreciate."

chapters throughout the United States and each of them found him to be a real brother and an inspiration to carry on for Kappa Kappa Psi.

"Other brothers have written, and Brother Clarke (Herbert L. Clarke) in particular, of the greatness and brotherly attributes of Brother Sousa. He was simple, kind, affectionate in his attitude and dealings with his fellowman. Yet he was firm and prompt with things he did. There never was another Sousa and there never will be. He was distinct, individualistic and was the world's greatest band conductor and composer. Band music owes a debt to Brother Sousa that it can never pay."

On April 12, 1922, Sousa wrote to Grand President Squyers:

My dear Brothers of the Kappa Kappa Psi:  
...The very name 'fraternity' breathes friendship and communion of souls and I am very proud of my membership in Kappa Kappa Psi... We, as I have repeated before, must look in the future, for talent from the college and high school bands and surely a great many excellent players will no doubt grow out of the instruction received by bright American college men.

Whenever I can be of any service to you do not hesitate to command me, and believe me,  
Yours sincerely and fraternally,  
John Philip Sousa.

No doubt that Sousa's membership in Kappa Kappa Psi helped to increase the prestige and colonization efforts of the brotherhood. By 1926, at the end of Squyers' term as Grand President, ten more chapters of the fraternity were activated.

In 1947, at the 14th Biennial Convention at Oklahoma A&M College, the first National Intercollegiate Band performed. This band featured 125 select student musicians from more than 16 colleges and universities. The program featured

eleven musical selections and ten different conductors – including F. Lee Bowling, Charles Wiley, Hugh McMillen, J. Lee Burke, William Scroggs and Bohumil Makovsky. Appropriately, the concert opened with John Philip Sousa's march, *Semper Fidelis*, "always faithful."

After receiving his honorary membership in 1922, Sousa wrote: "Brothers, I have received medals and honors from every civilized country, but I feel this honor above all, due to the fact that this was

given me by a group of University bandsmen who are furthering the great work that I dedicated my whole life to."

The author would like to thank the following individuals for their assistance with this article: Ken Corbett, Adam Cantley, Dixie Mosier-Greene and Carolyn Steckel.

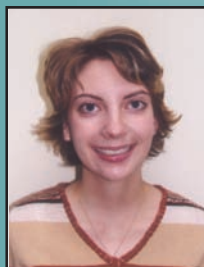


Known all over the world as "Sousa's Band," these elite band members were the first musical act to travel more than a million miles and perform for more than a million people.



# HONORS

*Kappa Kappa Psi*



Megan Paschke (Beta Montana State University) is from Rapid City, S.D., and attends Montana State University in Bozeman, Mont. She joined the Beta chapter of Kappa Kappa Psi in the Fall of 2002. She has been a member of color guard in the Spirit of the West marching band for 3 seasons. Megan is a nursing major and will begin upper division courses next fall in Billings, Mont.



Stephen J. Meyer (Alpha Zeta, Indiana University) is currently a sophomore at Indiana University, majoring in instrumental music education. He is a member of Concert Band, drum major of the Indiana University Marching Hundred and the librarian for all of the Concert Bands along with the Marching Hundred. This past fall, he served as Service Coordinator for the Alpha Zeta Chapter of Kappa Kappa Psi. He plans on becoming a college band director.



Kevin Newak (Alpha Omega, University of Pittsburgh) is a history and political science sophomore and trumpet player in the University of Pittsburgh marching band. Along with being a member of the fundraising committee and chairperson of the awards committee in his chapter, Kevin is also involved with Phi Sigma Alpha (National Political Science Honor Society) and the French Club.

Byron Fruit (Alpha Omega, University of Pittsburgh) is an Engineering Physics major at the University of Pittsburgh where he has participated in the concert band for one year and the marching band for four (one year as a squad leader.) Along with Kappa Kappa Psi, Byron is also a member of Mu Kappa Upsilon (local honorary band service fraternity,) Tau Beta Pi (engineering honor society) and the Golden Key International society.

## Dr. Paul Droste awarded DSMM

Kappa Kappa Psi awards the Distinguished Service to Music Medal to Dr. Paul Droste. Droste was the director of the Ohio State University Marching Band from 1970-1983. He is currently professor emeritus at The Ohio State University School of Music. Dr. Droste is a member of the American Bandmasters Association and recently retired as director of the Brass Band of Columbus. Dr. Droste was nominated by the Eta Chapter at OSU for his decades of service to music and music education. He is responsible for teaching countless musicians and music educators across the country.

The DSMM was presented to Dr. Droste on November 20th, 2004 at the University of Michigan vs. Ohio State University Skull Session. Skull Session is an Ohio State tradition where the marching bands perform their pre-game and halftime shows before the game, which is played at St. John Arena. The award was presented by Mike Osborn, KKΨ National President and Derrick Mills, KKΨ National Vice President for Student Affairs.



(From left to right) Dr. Jon R. Woods, OSUMB Director, Mike Osborn, KKΨ President, Anne Droste, Dr. Paul Droste, and Derrick Mills, KKΨ VPSA.



# DIRECTOR'S Corner



By William Johnson  
Vice President for  
Professional Relations  
Kappa Kappa Psi

For the last several months, members of the National Council of Kappa Kappa Psi have been reading and evaluating the Chapter Summary Reports submitted by each chapter last spring. As your Vice President for Professional Relations and the newest member of the National Council, I have found reading these reports to be very interesting. For the most part I am extremely impressed with the extraordinary accomplishments of our fraternity and the powerful impact that we are having on the college and university bands throughout the country.

After careful analysis, however, one will find that most of our chapters have between 15 and 35 members. This is an excellent number of chapter members for band programs that have about 120 students in the marching band and another 100 students in the concert band. Unfortunately, a chapter of only 25 members is not adequate for the large programs that have over 300 students in the marching band and another 200 students in the concert band. In reading the reports, I have discovered that many chapters are spread too thin to be of significant service to both the marching and concert bands. When this happens, almost invariably the chapter only becomes a service organization for the marching band and the concert band program is simply left on its own.

In addition, too many chapters with adequate numbers of members simply devote almost all of their time and energy serving the marching band at the exclusion of the concert band. This creates an imbalance in the chapter and can damage the image of the fraternity at that college or university and possibly throughout the profession itself.

Please don't misunderstand. No one loves the marching band more than I do. I was in two big-ten bands as an undergraduate and graduate student and was the director of a university marching band for over 25 years. As a Director of Bands I, along with most of my colleagues throughout the United States, have worked hard to produce a proper balance between providing entertainment at sporting events and performing the wonderful music written for the wind band at public concerts.

A Kappa Kappa Psi chapter is an organization of very special band students who strive for the highest and have a built in service-beyond-self personal philosophy that will probably remain with them throughout their lives. In any college or university band program, this energy force should be carefully balanced between the needs of both the marching band as well as the concert band.

I am convinced that most of the imbalance comes from the lack of imagination. The needs of a thriving marching band are so obvious. It takes little effort to make a list of what the marching band needs from a service organization.

Marching bands begin the school year with a vengeance and with almost immediate performances. The excitement is extremely contagious and it is not difficult to obtain very strong prospective members from this group of people. The concert band begins its year with much less fanfare but with strong needs for the kind of service that our fraternity can provide. Some of these needs, however, appear later in the year as the program begins to give public performances, host festivals and go on tours and, for the most part, are different than the needs of the marching band.

My recommendation is for the chapter president and others to have regular meetings with the conductor(s) of the concert band(s) and find out what their needs are. If the conductor is at a loss in determining what can be done, then present him/her with a list of possible service projects. I guarantee you that his/her face will light up! In addition, the chapter must recruit prospective members from the concert band so that its membership is carefully balanced between the two programs. Don't forget the jazz band(s) and their director(s). They are band people too. In addition, let's work hard to develop chapters with an adequate number of members to do the job for all of the ensembles.

When the brotherhood permeates the entire band program, wonderful things will begin to happen. Barriers between performing ensembles will crumble and a spirit of cooperation among all students in the band program will form. When the college and university band profession sees our fraternity as a cohesive society of dedicated bands people who, in its membership and service, represent the entire band program, our reputation will be greatly enhanced. We must, with great enthusiasm, move in this direction.

I look forward to seeing many of you in Lexington in July. Don't forget to audition for the NIB and get your application and recording in on time. Encourage your friends to do the same.

## KAPPA KAPPA PSI MUSIC EDUCATORS!

Attend Conn Selmer University!

Advance Your Career In Music  
Travel / Registration Scholarships Available to Kappa  
Kappa Psi members!

Applications available at  
[www.kkpsi.org](http://www.kkpsi.org).  
Due by April 15th!

# Tau Beta Sigma

## Call for Nominations

### Call for Tau Beta Sigma Board of Trustees Candidates

Elections for three positions on the Tau Beta Sigma Board of Trustees will take place this summer on Wednesday, July 27th, during the 2005 National Convention. All interested individuals who wish to be considered should submit a formal letter of candidacy and resume to the National President by May 1, 2005. The Tau Beta Sigma National Council serves as the nominating body for the Board of Trustees and reviews those candidates who have submitted letters of intent.

Qualifications for Tau Beta Sigma Board of Trustees is as follows as outlined in the National Constitution, section 2.107:

- A member of the sorority in good standing
- At least 30 years of age at the time of election
- Possess outstanding business or professional ability
- Capable of representing the corporation and sorority under all circumstances

Board of Trustees Election procedure:

- May 1- Letter of intent and resume to National President
- June 1- Candidates posted to National Web site
- July 27- Slate named and election
- July 27-30- Elected members audit BOT meetings
- July 30- Board of Trustee Meeting- first meeting with new board

Please send your letter of intent and resume to:  
Deborah L. Baker, Tau Beta Sigma National President  
410 Ridgemont Drive  
Fayetteville, GA 30215  
email:  
tbsdebbie@aol.com

### Call for Tau Beta Sigma National Council Candidates

Elections for the Tau Beta Sigma National Council will take place this summer on Saturday, July 30th, during the 2005 National Convention. All interested individuals who wish to be considered should submit a formal letter of candidacy and resume to the National President by June 1, 2005. All letters of intent will be sent to the Tau Beta Sigma Nominations Committee for review and consideration.

Qualifications for Tau Beta Sigma National Council is as follows as outlined in the National Constitution, section 3.203:

- A member of the sorority in good standing
- At least 25 years of age at the time of election
- Completed an undergraduate degree program

- Possess outstanding business ability
- Capable of representing the sorority under all ordinary conditions
- Willing/able to devote necessary time to the execution of the duties of office
- Actively participating in serving bands during term of office

National Council Election procedure:

- June 1- Letter of intent and resume to National President
- June 15- Candidates posted to National Web site
- July 30- Slate named and election
- July 31- 2005-2007 National Council Meeting

Please send your letter of intent and resume to:  
Deborah L. Baker, Tau Beta Sigma National President  
410 Ridgemont Drive  
Fayetteville, GA 30215  
email: tbsdebbie@aol.com

Every chapter will be represented at National Convention with a delegate or proxy. Don't miss your chance to be a voice in our Sorority! Below is a list of Tau Beta Sigma 2005 National Convention Committees (TEAMS). Each delegate will sit on a TEAM during convention week. TEAM assignments are placed by the National President based on requests from the delegate form and availability.

Delegate/proxy forms should be returned to the National Headquarters by June 1, 2005. Further questions, contact Debbie Baker, National President at tbsdebbie@aol.com .

### Tau Beta Sigma National Convention TEAMS

- Colonization
- Credentials
- Jurisdiction
- Membership
- Nomination
- Program: Awards
- Program: Archives/Women in Music
- Program: Web site
- Publications
- Ritual and Regalia
- Sisterhood and Spirit
- Sorority History
- Ways and Means



# ENCORE!



Official Publication of the National Alumni Association

**G**reetings to all actives, alumni and others from the NAA 2005 National Convention Programs Committee. Following the close of the 2003 National Convention, our committee was formed and tasked with planning alumni activities for the 2005 convention in Lexington to make it the best possible convention for alumni. Using verbal feedback from the Norfolk convention, as well as an extensive survey of alumni, we hope that we have put together a convention that will be enjoyable for all persons present within the NAA. (Note: As the press schedule for this article was November 1, 2004, many items discussed were not entirely finalized. However, all NAA members will be receiving a packet in the spring providing final details for the alumni plans at National Convention.)

First and foremost, we are proud to announce the newest musical event at National Convention, the National Alumni Concert Band. Just as involvement with Kappa Kappa Psi and Tau Beta Sigma does not have to end with graduation, neither does the joy of performing music. Many of our alumni perform regularly in community bands and orchestras, help with high school or college band programs or practice their love of music on their own. With the National Alumni Concert

Band, the NAA hopes to showcase the musical talent present within the alumni, as well as highlight the continued importance musical involvement has with alumni. In keeping with this theme, all performers and directors will come from the ranks of alumni. In order to encourage maximum participation, no audition is necessary. The only requirement is to have a desire to perform with the band. Music will be selected from that which is commonly played in community bands and will be mailed in advance to participants. The National Alumni Concert Band concert will also provide a venue for the public announcement of the Community Band Award during its informal lunchtime concert. We are very excited to present this program and hope the participation is significant enough to make this a future tradition at subsequent National Conventions.

As in past years, one major goal of the NAA and the NAA convention programming is geared towards supporting the National Intercollegiate Band program. Following the NIB concert on Tuesday night, the NAA will be hosting a reception where there will be the opportunity to mingle with other alumni, NIB participants and others.

In conjunction with the NIB reception, the NAA will be hosting a benefit luncheon where all proceeds will go directly towards expenses encountered with the NIB. This is another opportunity to show our support to the active chapters and one of the most important ongoing missions of the organizations.

The NAA will also be holding a silent auction at convention to raise money for the NIB and other programs. The Silent Auction always has unique items available and over its history has raised nearly \$10,000 for the NIB and associated programs. Donations to the silent auction are

gladly accepted and are tax deductible as allowed by law. Items which have been highly successful in the past include personalized craft items related to Kappa Kappa Psi and Tau Beta Sigma, unique items from past District and National Conventions (shirts, bags, candle holders, etc.) and other memorabilia. For further information on the NAA Silent Auction, including making donations and helping with the auction, contact Marci Jones (naane@kkytbsnaa.org.)

Going beyond the NIB and the related fund raisers, the NAA

“...involvement with Kappa Kappa Psi and Tau Beta Sigma does not have to end with graduation...”

## continued...

Convention Planning Committee has created a schedule of activities which closely matches desires for the convention experience. Feedback from alumni, actives and others was used in the planning of major activities at convention. Our survey indicated that there was a strong desire for more small, social gatherings at convention. Based on this, we are trying to put together a list of local restaurants for evening mixers after the major convention activities have concluded for the evening. Survey results indicated that there was also a strong desire to have a sporting event included within the social plans for convention. We hope to be able to fulfill this desire as well with a trip to a Lexington Legends Minor League baseball game. We will know for certain if this is feasible when the minor league baseball schedule is released in December.

Instead of planning one activity on the traditional "Alumni Activity Day," our committee has taken into consideration the different interests and personalities of our many members. We hope that one of these wonderful activities will peak interests and show the great things that Kentucky has to offer!

For the "daredevil" adventure-minded alumni (and actives), we are planning a follow up to the 2003 Busch Gardens expedition with a visit to Six Flags Kentucky Kingdom. Kentucky Kingdom is home to seven roller coasters and many other thrill rides. One will be able to duel with your brothers and sisters on Twisted Twins (the world's first dueling roller coaster), be launched from 0 to 60 mph on Greezed Lightnin' or experi-

ence even more incredible speeds on the 63 mph, record breaking Chang roller coaster!

Want to touch base with the history of America? Nearby Shaker Village of Pleasant Hill is the nation's largest restored Shaker community with 2800 acres of farmland and 33 restored 19th century buildings. On a self-guided tour, one can leisurely view 40

“The planning by the NAA for the Lexington Convention far exceeds what has occurred in the past...”

rooms of Shaker furnishings in the Centre Family Dwelling . . . sit in the Meeting House and marvel at its early cantilever construction, learn about the uses of herbs as medicinal cures in the Farm Deacons' Shop, watch broom makers, joiners, coopers, spinners, weavers and quilters, explore kitchen and herb gardens or hike across the fields or down Shaker Landing Road to the river. We are planning an outing here which is perfect for those interested in a more leisurely pace.

No visit to the Bluegrass State would be complete without an equestrian experience and we are providing this with a visit to the Kentucky Horse Park. Located in the heart of the Bluegrass State, the Kentucky Horse Park is a working horse farm with 1,200 acres surrounded by 30 miles of white plank fencing. The park is like none other in the world. Dedicated to man's relationship with the horse, the park features two outstanding museums, twin theaters and nearly 50 different breeds of horses. All of these elements combine to make a visit to the park an enjoyable learning experience for everyone - from those unfamiliar with the horse, to the horse expert. For those alumni who will be traveling with children, this is a highly recommended expedition.

The planning by the NAA for the Lexington Convention far exceeds what has occurred in the past and we hope it pays off by making this truly the best convention yet for the Alumni Association! If anyone has any comments or suggestions, please feel free to contact me at walter.schilling@computer.org. We are always looking for interested alumni to help at convention. See you in Lexington!

Walter W. Schilling, Jr.  
Chair, NAA Convention Programs  
Committee



## Are You A Mentor?

By Kelly Eidson

NAA Board of Directors, Chair

This spring the National Alumni Association is gearing up for District and National Conventions. These conventions give alumni members a chance to see the growth in Kappa Kappa Psi and Tau Beta Sigma. For many, it's a time for reminiscing on the "good old days" with other alumni. It also gives alumni members of our organizations the chance to interact with actives and the chapters. Being good alumni members means thinking about the chapter, district, and national organizations in a different way. It's not enough to do the same things we did as actives. Growing up (which comes with graduation) means letting go of certain things. We can't serve in the same roles in the chapter and district, we can't be the focus of every meeting, and we can't lead the organizations in the same way.

OK, many of you may stop me here. "What do you mean we can't lead the organizations? We developed leadership and then we just get dumped out into the world?" I didn't say that. As alumni members, we can all still lead – we just have to be thoughtful and creative when we do so. Our roles have changed, as they should. We have moved on from being President or Membership Educator to being an Advisor or a mentor to the actives. We need to think about excelling in these roles, just as we did in our positions when we were actives.

Remember back to your days in college – was there a person to whom you looked up? Maybe they were in Kappa Kappa Psi or Tau Beta Sigma – maybe they even came to meetings and mentored you, sharing their experiences with you whenever you asked. How would things

have been different if that mentor hadn't been around? What if they were pushy, always telling you how you should do things, not letting you run your activities yourselves. Many of us know someone like that too.

As we start heading off to our conventions – rekindling old friendships, meeting new chapter members, enjoying a weekend away from work – I challenge you to each think about your role in the organization. What kind of impact do you have on the actives? Are you like the mentor? We each need to develop and hone our leadership skills – you can never learn enough about being a leader. Try to become the best alumni leader you can be. And let's each work to keep the focus of the organizations where it belongs: on the bands and on the actives.

## Local Alumni Association Spotlight

Northeast District Alumni Association (NEDAA)

Greetings from the Northeast! The NEDAA is continuing to pursue an aggressive agenda of service and outreach activities and programming. One of our goals is to maintain the excitement commonly found at Districts throughout the year to that end, the following projects and initiatives are in progress:

- NEDAA Message Board on Yahoo.com to sustain communication throughout the year and maintain contact between the membership.
- Develop workshops and seminars for the active membership on a wide range of topics, including resume workshops, networking ideas, and ways to improve chapter operations.
- Develop connections to the District Councils in reference to alumni issues and programming.
- Redesign and relaunch our Web site with a new domain name
- Develop a resource for community bands and post-collegiate ensembles where alumni can continue playing, marching and - ultimately – serving! While there are other projects in the works, these

serve as the ways in which we are working to expand our service to the NED, and ultimately to our chapters.

## Alumni in the Spotlight

Kevin Nelson – Vice Chair

Kevin was initiated into the Epsilon Omega Chapter of Kappa Kappa Psi at the University of Nebraska in April 1998. As an active, he served as colony President & first chapter President. Prior to joining the NAA Board of Directors, he served two terms as President of the Midwest District Alumni Association (MWDAA) and a term as Treasurer. Kevin is a life member of Kappa Kappa Psi as well as an honorary member of the Midwest District of Kappa Kappa Psi.

Kevin received a Bachelor of Science in Business Administration degree from the University of Nebraska and graduated in 1999 with a Masters in Professional Accountancy also from the University of Nebraska. He became a CPA in 2002 and currently holds a permit to practice in the state of Nebraska. He currently resides in Lincoln, Nebraska and works for Strain, Slattery, Barkley & Co., CPAs, P.C. In his free time, Kevin belongs to numerous professional organizations, is active in his church, and volunteers his time whenever possible to the Cornhusker Band Program and Epsilon Omega Chapter.

# What's Happening with our members

- **Reggie Gardner** is currently a Communications Specialist for NASA, and currently resides in Stafford, Texas. Reggie is an alumnus of the Gamma Omega Chapter of Kappa Kappa Psi. He was invited in Spring 1985.
- **Benita Parker**, Epsilon Lambda – Tau Beta Sigma – NC Central University
- **Michael Staples**, Iota Zeta – Kappa Kappa Psi – NC A&T  
Congratulations to Sister Benita Parker on her marriage to Brother Michael Staples. They were wed in Charlotte, NC on July 31, 2004.
- **Melody Presley** – Epsilon Lambda - Tau Beta Sigma – NC Central University  
Congratulations to Sister Melody Presley on her marriage to Sean Marshall. They were wed in Durham, NC, on September 18, 2004.
- **Lansing R. Dimon** – Eta Phi (Life) - Kappa Kappa Psi/Eta Alpha – Tau Beta Sigma (Honorary) – Syracuse University  
Lansing is currently finishing a M.S. in Music Education and a M.S. In Instructional Design, Development and Evaluation at Syracuse University, where he is also a Graduate Assistant for the Music Education program. He works at American Music as a Learning Center Coordinator and resides in Lansing, Ny, with his partner, Mark. He is also the President of the NED Alumni Association.
- **Terkessa (Scott) Stone** – Gamma Tau (Life) – Tau Beta Sigma – University of Central Arkansas  
Terkessa Stone, formerly Terkessa Scott, is a life member of the Gamma Tau chapter (University of Central Arkansas) of Tau Beta Sigma. She is the immediate-past Southwest District Secretary/Treasurer. She and her husband are now residing in Little Rock Ark., and her son, Nathaniel, is seven months now.
- **Sean Mackey** (Gamma Pi, KKΨ) and **Amy (Flaig) Mackey** (Rho, TBΣ)  
Sean and Amy are happy to announce the birth of their daughter, Abigail Colleen, born June 11, 2004.
- **Ben Curless and Lisa Matich Curless** (Beta Sigma, TBΣ)  
Ben and Lisa are proud to announce the birth of their son, Ian Michael Lee, born June 12, 2004.
- **Blake and Rebecca (D'Altillo) Wallace** (Gamma Pi, KKΨ)  
Blake and Rebecca are happy to announce the birth of their daughter, Ava Grace, born August 3, 2004.
- **Anne Buquet Barrios** (Life Member, KKΨ)  
had a very busy and productive summer. First, she decided to compete for the title of Ms. Louisiana Crawfish Festival and represent a festival that consistently ranks in the Top 10 in attendance in Louisiana. She was second runner-up but the winner had to resign due to personal matters and she now represents the festival across Louisiana. Secondly, she decided to participate in the Young Careerist Competition that is sponsored by the Business and Professional Women's Association/USA, competing in May at the parish level (that's counties for the rest of you) where she won, moving her on to the state competition. After winning the state competition, she went on to represent Louisiana at the national competition, which was held at the BPW/USA National Convention in Fort Lauderdale, Fl. While Anne did not win the national title she did finish in the Top 5. Anne has done all this while working full time as an 8th grade science teacher and raising three children. She is doing a great job representing her family, the parish of St. Bernard, the state of Louisiana and Kappa Kappa Psi.
- **Walt W. Schilling, Jr.** recently returned to full time graduate school at the University of Toledo to work on his PhD in Software Reliability. He recently received an Ohio Space Grant Consortium Fellowship to cover his studies.



# Writers wanted for



The National Headquarters accepts The PODIUM submissions via e-mail. In order to make processing of articles easier, please use the following format:

Chapter: Omega Omega, KKPsi or TBS  
School: Any State University  
By: Your Name  
Title of Article  
Text of article.  
\*\* End of Podium Article \*\*

Remember that articles must be received by May 1 for the fall issue and November 1 for the spring issue. Within the subject line include "Podium Article for (your) Chapter." A confirmation notice will be sent to you via e-mail to ensure you that your article was received.

Feature articles should be 1-2 pages, not including photos. You can figure 600 words per page, so a 2-page article would be about 1,200 words. Try to keep your article to a multiple of 300 words, with a 600 word/1-page minimum. Your word processing software will count the words for you. If your word processing software has a grammar checker, it's a good idea to run that in addition to the spell checker. Feature articles may receive a "Contributing Editor" credit.

Fraternity/sorority-wide news items should be one-half page/300-word minimum, not including photo(s).

Chapter news items should be one-quarter page/150-word minimum, not including photo(s).

## Photos:

Be sure to send photos illustrating your story. Submissions containing photographs will receive priority for publication. Try to illustrate your article by photographing your brothers and sisters in action. Every photo must have a caption! Write the caption on a Post-it note and attach to back of photo, or write the caption on the back of the photo with a fine-point marker. Don't write on the back of photo with a ballpoint pen or pencil; this permanently damages the photo. Be sure you identify everyone in the photo.

Articles with photos should be mailed to:  
PODIUM Editor  
KKY/TBS National Headquarters  
PO Box 849  
Stillwater, OK 74076-0849

Be sure that we receive your article on time. Date and time stamps on articles will be checked. To submit your articles electronically, email : [podium@kkytbs.org](mailto:podium@kkytbs.org) Articles may be submitted as an attachment to an e-mail message; save the article as a Microsoft Word document (.doc suffix must be attached). We will still accept hard copies of articles, although we prefer that you also enclose a diskette version with the paper copy.



**THE DIRTY O WORD**

BOSTON, Mass. - This was the summer of the big O for me - by which, of course, I mean Orchestra. Now, I know what you're thinking; what is a BAND Sister doing playing in a group consisting mostly of firewood? In some ways, orchestra is completely different. I was forever being told to play more quietly (as if a BAND trumpet section could ever play too loudly,) I had to learn to count higher than four (sometimes hundreds of measures of rest,) and I had to transpose on sight (trans-who?) With the Monteux School Orchestra in Hancock, Maine, I had to live in the middle of the wilderness. I had little contact with anyone I knew or any of the outside world. We were permitted to give ourselves fully to music and indeed we practiced it, learned it, listened to it, talked about it, dreamt about it - I was handed stacks of music 36 hours before I was expected to play it (correctly.) I lived in fear of the words, "STOP! Let's hear the trumpets alone at rehearsal \_\_\_\_." Somehow, amid all the pressure of the conditions, the kinship of those who harbor a true love for music can transcend all else. In exchange for braving the mosquitoes, bears, red tide, the second violins and the Maestro himself, I was rewarded with the joy of performing some of the most amazing music in today's repertoire. We gave six symphony concerts and several chamber concerts for packed audiences (quite possibly, the entire state of Maine.) So maybe...just maybe...violins aren't so bad. But you didn't hear that from a Band Sister.

*Jamie "Cher" Teot, #137, Member, TBΣ, Eta Gamma,, Boston University*

**GREETINGS FROM THE EPSILON XI CHAPTER OF TAU BETA SIGMA!**

TROY, ALA. - As always, our chapter has had an exciting and busy fall semester. We have taken on a number of challenging projects. Things we have done this semester are as follows: provided Blimpie subs, water, cokes and bananas for the band during away trips; put plastic on the bleachers for the band to sit on at all home and away games; passed out and taken up uniforms; kept up with a medical kit that is available at all practices and games; volunteered at

the DCI festival in Troy as guides and runners; ran a registration table and hospitality table for band directors during district and state concert band competitions and other band workshops; raised money with Kappa Kappa Psi for a new chalkboard, etc.

So as you can see, we have had a lot to do but have enjoyed the opportunities to serve the band and fellowship with our chapter members.

We recently had our Formal Tea and are proud to announce that we have 15 MC's for the spring semester, which more than doubles the size of our chapter. We are thrilled and humbled at the interest in Tau Beta Sigma and band service. Our chapter has 5 graduating seniors this year and this number will certainly help our chapter in the future. This year was the first year that our chapter has had the office of Corresponding Secretary and it has been a welcome addition. The Recording Secretary appreciates the help with the workload.

Along with the Zeta Upsilon chapter of Kappa Kappa Psi, we are anxiously awaiting our 3rd annual Step-4-Life step show in the spring in honor of brother Steven Dobarzynski who passed away from leukemia in March of 2002. We have recently voted to make this fundraiser a scholarship fund in Steven's name and is made available to band members who exemplify a number of criteria which will be voted upon later.

Our football team is expecting our first ever bowl game bid this year and we are very excited at the opportunity to attend one. It is a wonderful compliment to our university and sports programs. The band has incredible support and will more than likely go to any bowl game in the lower 48 states.

As for our university, we are going through some changes. The administration and alumni voted to change the name from Troy State University to Troy University. We have gotten a new mascot, school logos, and are looking forward to what changes await us in the future.

We would like to wish all the chapters our continuing love and support and well wishes for the upcoming semester.

*MOTS, Member, TBΣ, Epsilon Xi, Troy State University*

**PEN PALS 'R' US!**

KUTZTOWN, PA. - Every active sister and membership candidate and one conditional sister from EE were paired up with sisters from HA. Emails, screen names and addresses were exchanged, and our program was underway.

"How did you guys match us up? I'm just curious, because my pen pal is a Nascar fan!" TBΣ EE's treasurer, Tasha Mulewski, who is a huge Nascar fan herself, and me about the pen pal program that myself and HA's corresponding secretary, Sarah Lindsay, recently put together.

The feedback from my chapter on the program has been positive thus far. It's exciting for us to chat with sisters from another chapter on an individual level. Said EE's president, Jen Wolfe, "I've already gotten to know a lot about my pen pal, and it's great to converse with an individual from another chapter rather than just sending impersonal letters or e-mails to the chapter as a whole." Sarah and I are hoping for our chapters to get together during an upcoming weekend in January, so that the pen pals can meet and bond in person prior to Northeast District Convention, where they can then be reunited.

*Lauren Hendler, Member, TBΣ, Epsilon Epsilon, Kutztown University*



**KKΨ**  
**Contributors**

**KKΨ TRUST FUND DONATIONS**

**Michael and Mary Beth Golemo**

**Tom Ostrander**

**William Sandy**

**Ken and Maribeth Corbett**



### KAPPA KAPPA PSI NATIONAL OFFICERS

**President**

Michael Osborn, 4089 Hampton Ridge Blvd, Howell, MI 48843; 517-548-0464; osbornmi@msu.edu

**Vice President for Colonization/Membership**

Dr. Rod M. Chesnutt, 48 Gallagher-Bluedorn Performing Arts Center, University of Northern Iowa, Cedar Falls, IA 50614-0802; 319-273-2173; Rod.Chesnutt@uni.edu

**Vice President for Programs**

Michelle L. Kincheloe, 9082 E Mansfield Ave, Denver, CO 80237; 303-770-2943; michelle.kincheloe@dexmedia.com

**Vice President for Student Affairs**

Derrick A. Mills, 7465 Bunker Ridge Court, Blacklick, OH 43004; 614-679-1052; dmills6@insight.rr.com

**Vice President for Professional Relations**

William V. Johnson, 1 Grand Ave., Cal Poly Music Department, San Luis Obispo, CA 93407-0326; 805-756-2556; wjohnson@calpoly.edu

**Immediate Past President**

Dr. Kirk Randazzo, Political Science Department, 1615 Patterson Office Tower, Lexington, KY 40506-0027; 859-257-3136; Kirk.Randazzo@uky.edu

**Board of Trustees**

Scott Stowell, Chair; Michael Golemo, Vice Chair; Kenneth M. Corbett; Andrew Mullin; Al Sergel; Michael Osborn; Kirk Randazzo

### KAPPA KAPPA PSI DISTRICT GOVERNORS

**Midwest**

Timothy Greenwell, Jr., 9124 Central St., Kansas City, MO 64114-3657; 816-363-8685; tgreenwell@center.k12.mo.us  
James Hudson, 124 Murphy Hall, University of Kansas, Lawrence, KS 66405; 785-864-4671; jhudson@ku.edu

**North Central**

Dr. Malinda Matney, 350 Briarcrest Dr, #159, Ann Arbor, MI 48104-6764; 734-761-3864; mmatney@umich.edu

**Northeast**

Marie Burleigh, 1807 N 23rd St, Clarksburg, WV 26301; 304-624-6827; Marie.Burleigh@mail.wvu.edu  
Peter Acosta, 215 Crouse College, Syracuse University, Syracuse, NY 13244; 215-443-2194; peacosta@syr.edu

**Southeast**

Chris Haughee, 5456 Summerland Hills Cir, Lakeland, FL 33813-6357; 863-646-7770; chaughee@hotmail.com  
Warren Duncan, Band Cottage, Tuskegee University, Tuskegee, AL 36088; 334-727-8325; alarattler@aol.com

**Southwest**

Brian Britt, Catlett Music Center No. 116, 500 W. Boyd, Norman, OK 73019; 405-325-9214; bbritt@ou.edu  
Daniel George, 10106 Technology Blvd West, #1227, Dallas, TX 75220-4359; 214-459-1575; dannygeorge114@comcast.net

**Western**

Don Hower, School of Music and Theatre, Washington State University, Pullman, WA 99264-5300; 509-335-4545; howerd@wsu.edu8;  
Paul Patterson, 4749 Lorraine Dr, San Diego, CA 92115; 619-583-1790; paul.patterson@marriott.com

### TAU BETA SIGMA NATIONAL OFFICERS

**President**

Deborah L. Baker, 410 Ridgemont Dr, Fayetteville, GA 30215; 770-461-4257; tbsdebbie@aol.com

**Vice President for Colonization & Membership**

Kathy Godwin, 3030 N. Winstel Blvd., Tucson, AZ 85716; 520-661-0444; keg@tbsigma.org

**Vice President for Special Projects**

Kimbi Sigle, 373 W. Nees Ave #126, Fresno, CA 93711; 559-261-0461; kimbi@tbsigma.org

**Vice President for Communications & Recognition**

Dollie McDonald, 2326 B St. #2, Lincoln, NE, 68502; 479-871-1762; dolliemcdonald@tbsigma.org

**Vice President for Professional Relations**

Dr. Johnnie Vinson, 132 Goodwin Music Building, Auburn University, AL 36849-5421; 334-844-4166; vinsojb@auburn.edu

**Immediate Past President**

Sylvia Halbardier, 4118 Hunters Glen, San Antonio, TX 78128; 210-599-8734 x761; sylvia1985@aol.com

**Board of Trustees**

Deborah Harris Kaplan, Chair; Jean Newman, Vice Chair; Deborah L. Baker; Sue Robash Carr; Edward Elsea III; Alan Harriet, CPA; Patsy Hejl; Wava Banes Henry (life); Janet West Miller (life)

### TAU BETA SIGMA DISTRICT COUNSELORS

**Midwest**

Wendy McCann, 8215 Jay Court, Arvada, CO 80003-4060; 303-227-9963; wmccann@tbsigma.org

**North Central**

Stacey Neeley, 530 N. Maine St., Ada, OH 45810; 419-772-2011; sneeley@onu.edu

**Northeast**

Cathy Miles, 2712 Southern Ave, Baltimore, MD 21214; 410-254-6332; cmiles@gilman.edu

**Southeast**

Cindy Lasso, 7769 Grande St, Sunrise, FL 33351; 954-747-5335; cindy@tbsigma.org

**Southwest**

Chris Gordon, 2406 Robin Rd, Manchaca, TX 78652; 512-484-0373; swdcoun@tbsigma.org

**Western**

Kris Wright, 6925 N Nanini Dr, Tucson, AZ 85704; 520-977-3011; kris@tbsigma.org





**Moving?** Don't forget to notify THE PODIUM of your new address

\_\_\_\_\_

Name

\_\_\_\_\_

Address

\_\_\_\_\_

City State ZIP

Complete above and return with old address label to:  
 Kappa Kappa Psi/Tau Beta Sigma  
 P.O. Box, Stillwater, OK 74076-0849

National Headquarters  
 KAPPA KAPPA PSI  
 TAU BETA SIGMA  
 National Honorary Fraternity/Sorority  
 P.O. Box 849  
 Stillwater, OK 74076-0849

Non-Profit Org.  
 U.S. POSTAGE  
 PAID  
 Jefferson City, MO  
 PERMIT NO. 210

CHANGE SERVICE REQUESTED