

# Focus

## on East Sussex

### 2012 annual monitor

# East Sussex at a glance

East Sussex at a glance	2003	2004	2005	2006	2007	2008	2009	2010	2011	Trend
Total population (Mid-Year Estimate)	500,800	502,500	506,200	507,800	509,700	511,100	512,100	515,500	-	↑
Children: % aged 0 - 15	18.5	18.4	18.1	18.0	17.9	17.8	17.7	17.6	-	→
Working age: % aged 16 – pensionable age <sup>1</sup>	59.0	59.1	59.3	59.6	59.6	59.4	59.1	58.9	-	↔
Retired population: % aged pensionable age and over	22.6	22.6	22.6	22.5	22.6	22.8	23.2	23.5	-	↑
Very elderly: % aged 85+	3.4	3.4	3.6	3.7	3.8	3.9	3.9	3.9	-	↑
Percent of population of working age in work	-	-	74.9	74.4	74.8	75.4	73.6	73.9	73.8	↓
Number of jobs (excl. self-employed)	159,200	163,000	169,300	166,400	167,000	168,400	162,800	163,500	-	→
Percent of jobs in knowledge-based industries	-	33.2	33.4	34.0	33.0	30.9	-	-	-	→
Percent unemployment (claimant) rate (December)	1.8	1.6	1.9	1.9	1.6	2.5	3.4	2.9	3.0	↑
Number of VAT and PAYE registered businesses	-	21,685	21,620	21,765	22,110	22,205	22,320	21,660	-	→
Gross Value Added (Index UK =100)	67	68	69	69	69	68	68	-	-	↔
Average earnings (Index GB = 100)	84	88	85	88	83	87	85	84	85	↔
Percent of new homes built on previously developed land	85	92	94	87	92	89	83	79	-	→
Price of a semi-detached house (as at Q1 of each year)	£167,600	£177,300	£198,600	£200,900	£208,700	£230,500	£193,000	£218,700	£222,700	↑
House price/earnings affordability ratio <sup>2</sup>	7.1	8.1	8.5	8.6	9.3	9.5	8.1	8.9	8.4	↔
Number of road casualties killed or seriously injured	365	343	353	392	378	398	373	320	-	↓

## Key

- ↑ increasing
- ↗ no trend
- ↔ staying the same
- ↓ decreasing

<sup>1</sup> Pensionable age is 65 for men and women.

<sup>2</sup> This ratio is calculated by dividing the lower quartile house price by lower quartile earnings for full-time workers.

# Introduction

With a population of just over half a million, East Sussex covers an area of 1,725 square kilometres (660 square miles) and includes the districts of Eastbourne, Hastings, Lewes, Rother and Wealden.

'Focus on East Sussex' is the annual monitoring report prepared by the Economy, Transport and Environment Department's Research and Information Team. It shows important information on key trends about the county's economy, population, housing, transport and environment. All the information summarised here (and much more) can be found on the East Sussex in Figures (ESiF) website.

Visit the ESiF Website at [www.eastsussexinfigures.org.uk](http://www.eastsussexinfigures.org.uk) for more information.

## Key Trends

The timing of economic recovery is still uncertain with news the national economy has recently slipped back into recession. Some key local information and evidence from our work includes:

- unemployment continuing to rise;
- number of businesses falling;
- projected increases in retirement age population and declining working age population;
- UK migration fuelling population growth;
- road casualties declining and lowest in past decade;
- Carbon Dioxide emissions reducing and at a faster rate than targets; and
- drought declared in February 2012.

The Economy, Transport and Environment Department is striving to help make East Sussex prosperous and safe and to improve and develop roads and infrastructure. Good quality evidence plays a key part in developing plans and bids for funding to support our growth agenda.

Over the past year we have set out our plans for the future through the Local Transport Plan 3, Environment Strategy and Waste and Minerals Plan which have been approved following consultation and we are currently reviewing feedback from the consultation on the Economic Development Strategy.

Our Broadband Plan has been approved which will unlock funding to significantly improve broadband speeds for residents and businesses across East Sussex by 2015. The Government has provisionally agreed funding to build the Bexhill to Hastings link road and bids have been submitted to the Local Sustainable Transport fund.

Results from the 2011 Census will start to be released this summer and will help to inform priorities and plans for the future.

Rupert Clubb

Director

Economy, Transport and Environment Department, East Sussex County Council

# Employment in East Sussex

## Economy and employment

- Falling per capita GVA.
- Falling number of businesses.
- Economy dominated by small businesses.

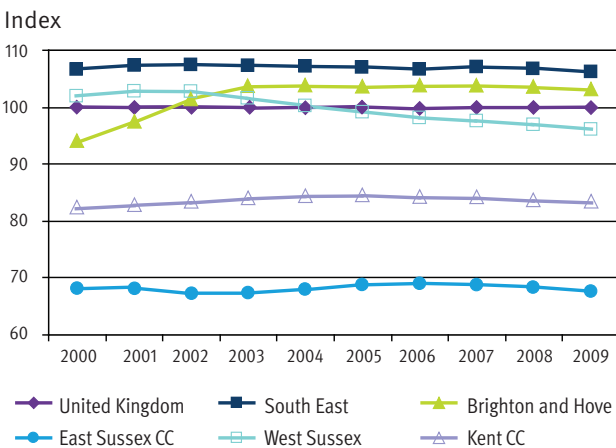
## Economy

### Poor economic performance

Gross Value Added (GVA) measures the overall value of goods and services produced in the economy. The county's economy generated an estimated GVA of £6.92 billion in 2009, contributing nearly 4% of the total for the South East.

At £13,521, GVA per person in East Sussex is just 68% of the national average and 64% of the regional figure. Medway and the Isle of Wight are the only other areas in the South East with lower GVA figures per person. The index has been falling since the recession began in 2007.

### GVA per person, 2000 to 2009 (Index: UK = 100)



## Businesses

### Business numbers falling

There are just over 21,600 businesses in the county, although numbers fell over the last year (down 3%) and at a faster rate than regionally (1.5%) and nationally (1.8%).

This reflects a more sustained pattern of under performance in the county's economy, where business numbers have remained static over the last five years against a backdrop of growth at the regional (up 3.9%) and national (5.3%) level.

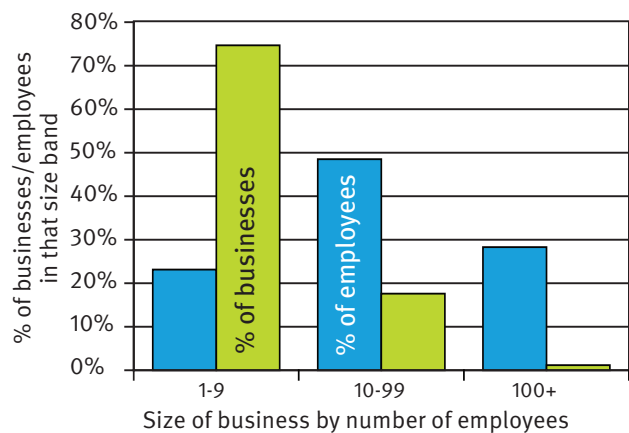
A third of the county's business stock is located in Wealden, which, with nearly 8,000 businesses has almost twice the number of businesses of any other district in the county.

### Small firm economy

The East Sussex economy is characterised by its high number of small businesses. The average VAT registered business employs almost 11 people.

More than three-quarters of the county's businesses employ fewer than five people, while 90% employ less than 10.

### East Sussex businesses and employees by business size, 2011



As a result, a relatively low proportion of people working in East Sussex (28%) work for large businesses employing 100 people or more compared to an average of 49% in England and 46% in the South East.

# Employment in East Sussex

Wealden has the smallest average business size of all districts in the county (at just over six employees), while Eastbourne, at almost 15 employees per business, has the largest.

## Employment and skills

- Increasing unemployment and those claiming Job Seekers Allowance.
- Employment dominated by service industries.
- Manufacturing sector employment contracting.

### Service industries dominate

The large number of small businesses in East Sussex reflects the high number of consumer service activities undertaken in the local economy (such as shops, cleaning, pubs and leisure activities).

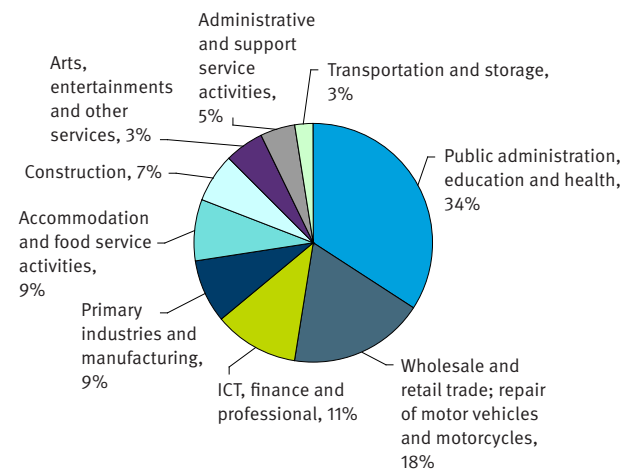
Around 85% of jobs in the county are in service sectors, 7% in Manufacturing, 7% in Construction and the remaining 1% in Agriculture, fishing, mining & utilities.

One-third of all people who work in East Sussex are employed in Public administration, Education or Health sectors, with this rising to 41% in Hastings.

Wholesale & retail trade; and Accommodation & food service activities are important sectors accounting for 27% of the county's jobs. In the seaside resort of Eastbourne, this figure reaches 31%.

Despite the very high percentage of people working in service sectors, some of the more highly-paid service industries are under-represented. In the South East, 19% of people work in the Information & communication, Financial & real estate and Professional sectors combined, compared with just 11% in East Sussex.

## Employment by industry in East Sussex, 2010



### Manufacturing sector contracting

Manufacturing accounted for 8.5% of employee jobs in East Sussex in 2008. 42% of these manufacturing jobs were in engineering, accounting for 3.6% of all employee jobs. In Hastings, Lewes and Wealden, 1 in ten jobs was in manufacturing. Between 2007 and 2008, employment in manufacturing industries fell as overall employment increased slightly. Engineering jobs also fell, but at a slower rate.

### Creative and knowledge-based industries contracting

The number of people working in creative sectors fell slightly over the last year. The most important creative sectors in the county, in terms of employment, are Music, visual & performing arts and Publishing. Advertising and Art & Antiques were the only creative sectors to see a small rise in employment.

### Service-based occupations over-represented

The service-based nature of local employment opportunities is reflected in the occupations of people who live in East Sussex and have jobs.

# Employment in East Sussex

The proportion of people working in managerial roles in the county is slightly higher than both the regional and national averages. Other occupations such as those in Administrative & secretarial, Personal services, and Sales & customer services are also over represented.

## Hours people work

In 2001, men who were living and working in East Sussex worked an average of 42.3 hours a week – similar to the number of hours for the South East and for England and Wales. However, 27% of men working and living in the county worked over 49 hours a week, which is slightly higher than the figures for the region and the rest of the country.

Women living and working in the county worked an average of 30.3 hours a week in 2001. This shows that, of those in paid employment, a much greater percentage of women than men work part-time.

## Lower skills levels

Skills levels of residents of working age are slightly lower in East Sussex compared with the regional and national averages.

The county particularly falls behind in terms of higher level skills – that is those people of working age qualified to NVQ Level 3 or above and degree level or above.

### *Qualifications of residents of working age, December 2010*

	NVQ Level 3+	NVQ Level 4+
East Sussex	48.6%	30.2%
South East	53.8%	33.9%
Great Britain	51.0%	31.3%

## Jobs numbers stabilising

While jobs numbers in the county increased slightly over the last year, this was well below growth levels experienced regionally. Job numbers in the county remain lower than two years ago.

## Low job density

Job density describes the number of filled jobs in an area divided by the number of people of working age (between 16 and 64) who live in that area. Job density in East Sussex in 2009 rose slightly from 0.71 to 0.72, but despite this slight improvement, the county continues to lag behind the region (0.80 per person) and nationally (0.78 per person).

## People in work below regional average

Recent estimates indicate that around 74% of the county's working age people (aged 16-64) are in employment. This is slightly lower than the South East average (74.6%) but compares very favourably with the national figure (70.3%).

## Rising unemployment

Unemployment in the county, as measured by the Jobseekers Allowance (JSA) claimant count, at 3.4%, is lower than the national rate (4.0%), but higher than the regional average (2.7%).

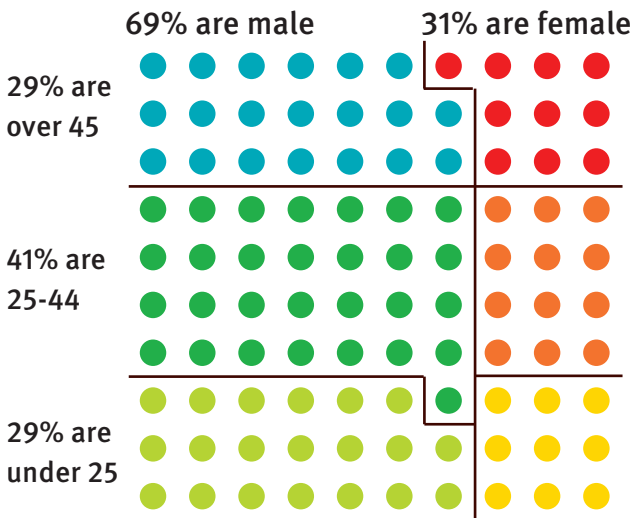
The number of people claiming in the county has continued to rise over the last year, reaching 10,329 in January 2012.

There are significant variations in the claimant count across and within the districts/boroughs of East Sussex. Hastings has the highest JSA claimant rate of all local authorities in the South East at 6.3%.

Meanwhile, the largest annual increase in claimant numbers was seen in Eastbourne, where claimant numbers were 20% higher in January 2012 than a year previous.

# Employment in East Sussex

## Out of every 100 JSA claimants in East Sussex...



## Young claimant numbers rising fastest

Over the last year, claimant numbers rose fastest among younger claimants (aged 16-24) where numbers increased by 17% in the year ending January 2012.

## Rise in longer term claimants

Just over 60% of the county's claimants have been out of work for up to 6 months, while one-in-five have been out of work for over a year.

## Earnings and income

- Lower average wages than regionally and nationally.
- Commuting provides opportunities for higher wages outside East Sussex.
- Deprivation concentrated in coastal towns.

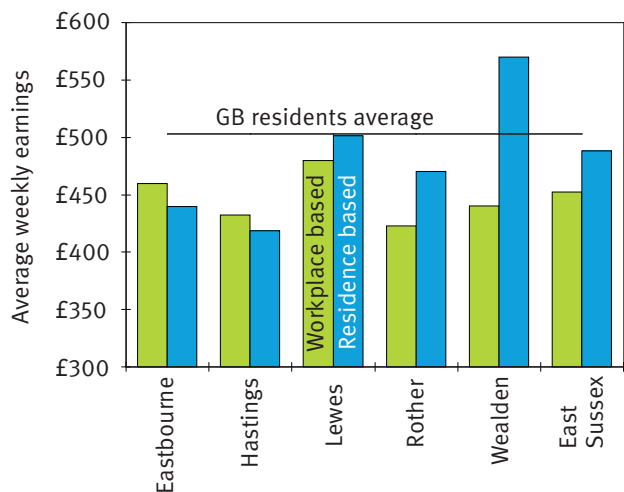
## Low average wages

Average gross weekly wages (before tax and national insurance are deducted) for employees who work full-time in East Sussex are £452. This is 14% (£76) lower than the regional average and 10% (£51) less than the average for Great Britain.

People who are employed in East Sussex receive the lowest average weekly wage of any county or unitary authority in the South East.

There are also significant differences between what people earn across the county. The highest average full-time wage of £480 per week in Lewes is 14% (£57) higher than the lowest average full-time wage of £423 in Rother.

## Average weekly earnings for all full-time employees – workplace and residence based, 2011



## Residence-based earnings

Many people who live in East Sussex commute to better-paid jobs outside the county. This is reflected in residence-based earnings figures which show average wages for people who live in the county irrespective of where they work.

Average gross weekly wages for people who live in the county and work full time are £488. This is £36 higher than the average wage paid to those working in the county (some of whom live outside the county).

Although the average wage earned by people living in East Sussex is 14% lower than the average for the South East, it is just 3% lower than nationally (£503 per week).

# Employment in East Sussex

## Household incomes rising slightly

Average gross household income figures (before tax and national insurance are deducted) take into account earnings from employment as well as income from savings and investments and any benefits received. In a county with a high percentage of retired residents, these other sources of income can be significant for many households.

In East Sussex, the average annual household income is estimated to have risen by 1.6% over the last year. At £28,600, it is 1.3% below the average for Great Britain and 15.7% below the regional average.

Average household incomes are highest in Wealden and Lewes (where they are above the national average) and lowest in Hastings, where incomes are over 14% lower than the national average.

## Commuting and home working

### More people commute out of the county to work than travel in

Since 1991, East Sussex has seen a significant increase in the number of people commuting to work.

The number of people travelling into the county to work increased by around 4,500 to just under 16,400 by 2001. Over the same period, the number of East Sussex residents commuting to work outside the county increased by nearly 9,700 to around 48,700.

These changes are similar to the increases in commuting levels over the previous 10 years from 1981 to 1991.

As a result, the overall level of net out-commuting (the number of people commuting to work out of the area, less the number of people commuting to work into the area) increased from 20,600 in 1981 to 27,100 in 1991, and to 32,300 by 2001. This is an increase of 57% over the 20 years.

Although the number of people commuting into East Sussex to work has increased over

the last 20 years, the number of people commuting out of the county has continued to rise more significantly. The number of people commuting out of the county to work increased by nearly 70% from just under 29,000 in 1981 to nearly 49,000 by 2001.

Of all East Sussex residents who are in paid employment, nearly one in four travel outside the county to work.

### Commuting flows by district

Eastbourne is the only borough/district in the county where more people commute into the area to work than travel out. Even here, the net inflow of commuters fell from 3,000 people in 1991 to just 400 by 2001.

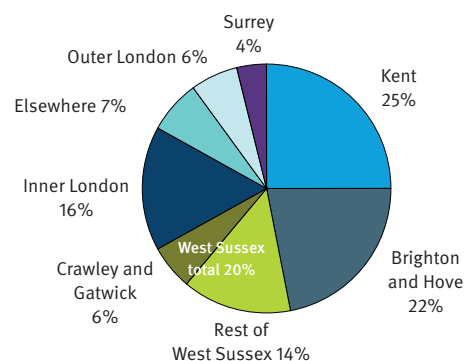
Across the county, about 60% of working residents live and work in the same district (compared with around two-thirds in 1991). Not surprisingly, this is highest in the two urban boroughs of Eastbourne (73%) and Hastings (70%). This compares with Wealden where only 54% of working residents live and work in the district.

### Where people live and where they work

Just over 80% of people, who commute into the county to work, travel from Brighton & Hove, West Sussex or Kent.

Around two-thirds of local residents, commuting out of East Sussex to work, travel to those same places. More than one in five East Sussex residents who travel out of the county to work commutes to London.

### People who live in East Sussex and travel to work outside the county, 2001





# Employment in East Sussex

## Longer journeys to work

In 2001, the average distance East Sussex residents travelled to work (not including people working at home) was just below 16 kilometres. Even though we do not have the same information from the 1991 Census, our best estimates suggest that the average distance people in East Sussex travelled to work in 1991 was around 10 kilometres. This suggests that the length of the average journey to work increased by 60% in the 10 years to 2001.

## More people working from home

Although commuting to work outside the county increased considerably between 1991 and 2001, another significant change during this period was the increase in the number of East Sussex residents working mainly at, or from, home.

This number more than doubled to 24,500 in 2001, and accounts for 12% of all residents who work. Rother and Wealden (which are largely rural) have the highest percentage of people working from home in East Sussex.

## Deprivation

### Significant areas of deprivation

The Indices of Deprivation 2010 (ID2010) measure deprivation in relation to seven different factors. These are:

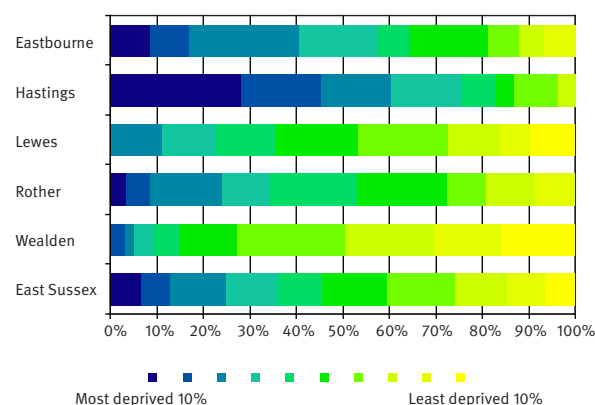
- low incomes;
- lack of work;
- poor health;
- education, skills and training;
- poor housing and access to services (such as the distance to nearest GP, supermarket, primary school or post office);
- crime; and
- poor living environment.

The scores from each category are combined to produce an overall measure of multiple deprivation.

East Sussex experiences the highest levels of deprivation of all the counties in the South East.

The most significant levels of deprivation are concentrated in the county's coastal towns. Hastings is the most deprived local authority area in the region and ranks amongst the 20 most deprived areas in the country.

### Proportion of LSOAs by IMD 2010 decile



The ID2010 measures deprivation for small areas called lower layer super output areas (LSOAs) which contain around 1,500 people. Of the 327 LSOAs in East Sussex, 22 are amongst the 10% most disadvantaged in England. Of these, 15 are in Hastings, five are in Eastbourne and two are in Rother.

The child poverty index - or the Income Deprivation Affecting Children Index (IDACI) - measures the proportion of children aged 0-15 years that are living in income-deprived households.

Although in terms of ranking, child poverty in East Sussex appears to be stable, the actual number of children living in low-income households has fallen from more than 17,000 to just below 16,400.

While nearly one in five children (18%) in East Sussex live in low-income households, this rises to 30% in Hastings.

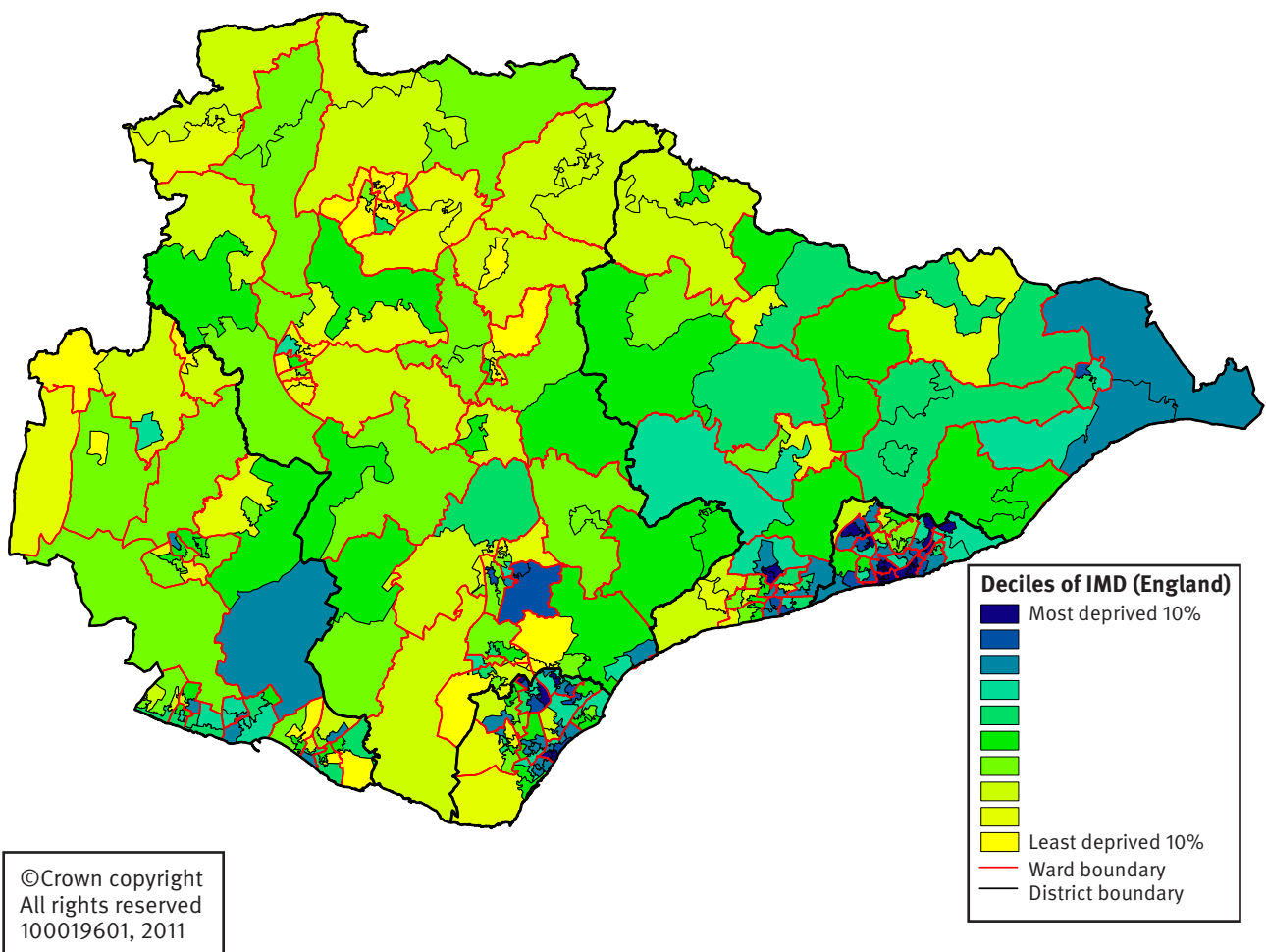
# Employment in East Sussex

Eleven of the county's LSOAs are ranked within the 10% most deprived nationally for child poverty; 10 of which are in Hastings, the other in Bexhill.

The older people poverty index - or Income Deprivation Affecting Older People Index (IDAOP) - measures the proportion of people aged 60 years and over who are in receipt of means-tested benefits.

Seven LSOAs in East Sussex are amongst the 10% most deprived nationally for poverty among older people. All are located in Hastings.

## *Index of Multiple Deprivation 2010 – LSOAs in East Sussex*



# Population and housing

## Population and households

- Relatively elderly population profile.
- Working age population projected to decline.
- The main driver of population growth is migration (mainly from UK).
- Highest number of births since 1994.

### Town based population

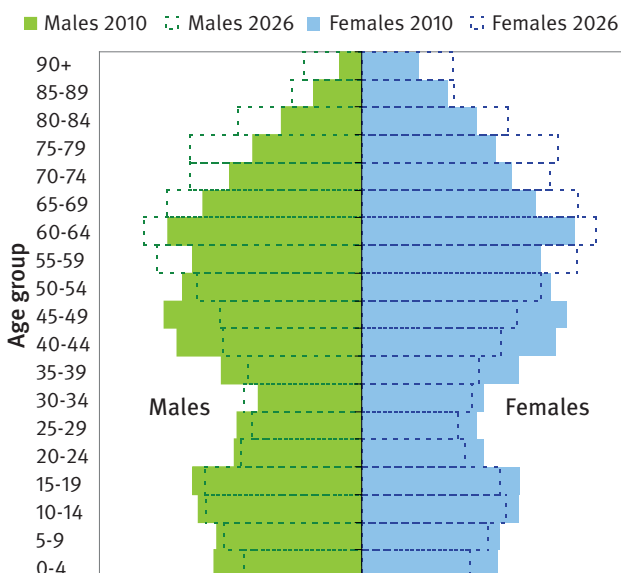
In June 2010, the population of East Sussex was 515,500.

Almost three-quarters of East Sussex residents live in towns with a population of over 10,000, about 10% live in areas classified as 'town and fringe' and 18% in 'villages, hamlets and isolated dwellings'.

### Population growing

The total population of East Sussex increased by 22,000 people (4.5%) between 2001 and 2010, which is lower than the national and regional average.

### East Sussex population by gender and age group, 2010 and 2026



Eastbourne accounted for almost one third (32%) of the county's population growth, with 7,000 additional residents since 2001, or a growth rate of almost 8%. At 2%, Hastings had the smallest growth in

population over the period, followed by Wealden at 3%.

According to the latest population projections, the population of East Sussex is projected to increase to 523,700 by 2026, an increase of 8,200 (1.6%) from 2010.

### Elderly population profile

East Sussex has an elderly age profile with 23% of population of pensionable age in 2010, compared to 17% in England and Wales and South East. Nearly 12% of the population is aged 75+, compared to 8% regionally and nationally. East Sussex is ranked the highest of all 35 counties in England for percentage of the population aged 90+ and second highest for 75+ and 85+ after Dorset.

Most of the projected population growth (2010-2026) is in post-retirement age groups. The over 65s may represent 31% of the total population in 2026 and the very elderly aged 75+ may account for 17% of the population.

However, the working age population is projected to decline by 10% over the period up to 2026. This decline is mainly amongst those people aged 35-49, due to lower fertility rates. Decreases in the number of young people aged 18-29 are mainly due to a lower level of migration.

### Migration largest factor in population change

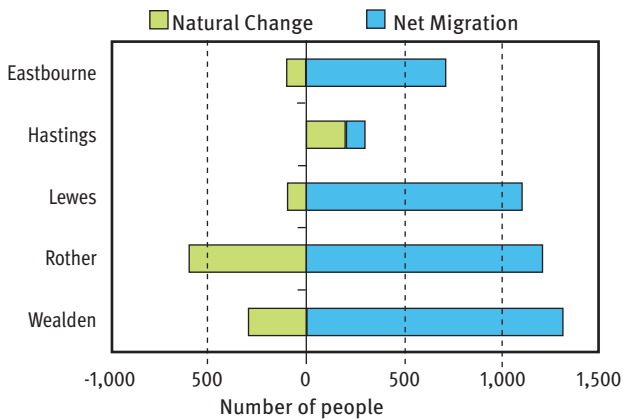
Population growth in East Sussex is entirely due to high levels of in-migration, mostly from within the UK. This level of migration makes up for the negative natural change caused by a higher number of deaths than births.

Although the natural change is still negative, this has considerably reduced since 2001 as births have increased and deaths have declined. Net migration has recently started to increase again to the same level as five years ago.

# Population and housing

The components of population change are different across the county. Hastings is the only district with more births than deaths but has relatively low levels of migration compared to the rest of the county.

## Natural change and net migration by district, 2009/10



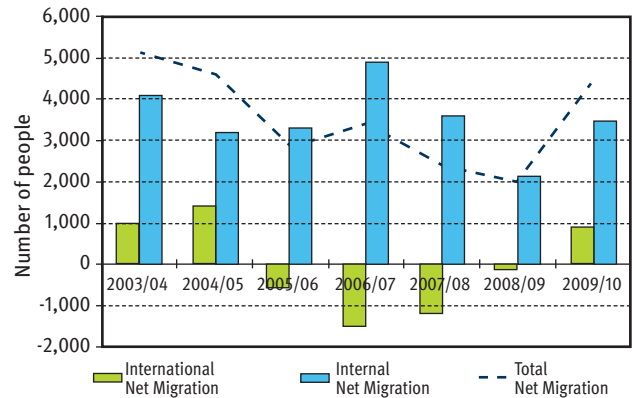
In 2010, there were almost 5,400 live births in East Sussex, the highest number since 1994. The number of births last fell in 2002 and has since increased by 18%. Over the past year, there has been a 3% increase in births, higher than regionally and nationally.

The number of deaths in East Sussex has gradually declined since 1993. There were 6,400 in 2010 compared to 7,400 in 1993, a decline of 14%, in line with the national fall. However over the past year, there has been a 5% increase in deaths, compared to almost 2% in South East and nil nationally.

Migration flows are substantial in the county, with 31,800 people moving in and 28,100 people moving out on average each year, a net migration gain of 3,500 people.

Migration from within the UK makes up the biggest component of total migration in East Sussex, with the South East accounting for 39% of all moves to and from the county, followed by London with 25%. Many of these moves within the South East are from and into West Sussex and Kent.

## Net migrants to East Sussex from within and outside UK, 2003-2010



In the years 2005-2009, more people moved abroad than moved into East Sussex from other countries, mostly due to net outflows from Rother and Hastings. Only in the last year has the number of people moving into the county exceeded those moving abroad. Working age people are generally more likely to migrate. In East Sussex, younger people aged 15-44 make up over half of the moves into and out of each district. However, the 15-24s produce a net outflow from every district, whereas older working-age migrants result in a net gain of population.

The number of new international in-migrant workers in East Sussex, registered for a National Insurance number across the county, has declined since its peak in 2007, as well as nationally and regionally. The majority of new NI registrations in East Sussex are from the European Union countries. Eastbourne and Hastings have the highest numbers of Eastern European in-migration registrations.

## Characteristics of the population

East Sussex is less ethnically diverse than the South East region or nationally, with 10.5% of the county's population in the black and minority ethnic (BME) groups, compared to 17% in England and 14% in the South East.

## Population and housing

At about 13%, Eastbourne and Hastings have the highest proportion of BME groups, compared to the rural districts. Since 2001, BME groups have increased in East Sussex and in all its districts, as well as nationally and regionally. The largest rise occurred in Hastings with an increase of almost 7 percentage points since 2001. Among the BME groups, the 'Other White' and 'Asian' ethnic groups show the highest proportions in the county and in all districts, except for Hastings where there is a higher proportion of people in 'Black' ethnic groups.

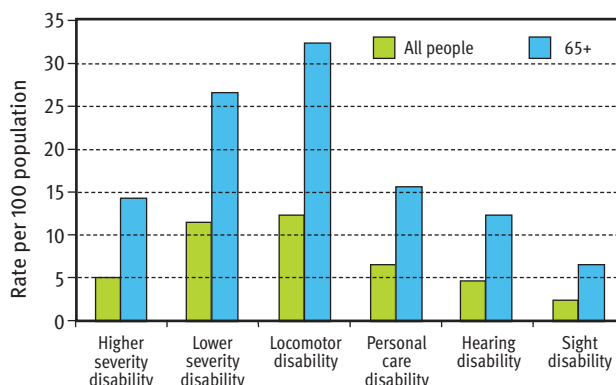
**Note: BME groups include: White Irish, Other White, Mixed, Asian, Black, Chinese and Other groups.**

In 2001, the Census showed that just over 6% of the county's population were born abroad. In 2010, the percentage of non-UK population has fallen slightly across the county. Only Lewes shows a relative increase in the non-UK population. Nationally and regionally, 13% and 11% respectively, of the total population were born abroad. At around 7%, Eastbourne has the highest proportion of non-UK population in the county, whereas Wealden has the lowest proportion at about 4%.

In 2001, 19% of people in the county had a limiting long-term illness (LLTI), a higher proportion than regionally and nationally, at 15% and 18%. By 2026, the limiting long-term illness population is projected to increase in East Sussex to about 24% of the total population. In particular, the 65s and over population with limiting long-term illness may increase to 48% of all people aged 65+.

The proportion of people living in East Sussex with at least one type of disability is projected to slightly increase from almost 17% in 2010 to about 20% in 2026. This is mainly due to the ageing population.

### East Sussex population with disability by type, 2010 (rate)



### Households and families

There were about 227,000 households in East Sussex in 2008. About 36% of the county's households are couples with no children and 36% are one person households, both higher than the national and regional average. Over half of all one person households are aged 65+.

Couples with children represent almost 18% of total households and only 6% are lone parents, below the national and regional level.

The total number of households in the county is projected to rise to 249,500 by 2026, an increase of 22,500 households or almost 10% since 2008. This is faster than the expected growth of the population, as one person households are likely to rise and couples with children are expected to fall.

As a result, the household size – average number of people living in each household – is expected to decrease from 2.25 in 2008 to 2.10 in 2026.

## Housing

- The number of dwellings is increasing at slower rate than regionally and nationally.
- Higher proportion of empty homes than regionally or nationally.
- Housing less affordable despite the drop in house prices.
- Demand for social housing continues to outstrip supply.

### Empty homes increasing

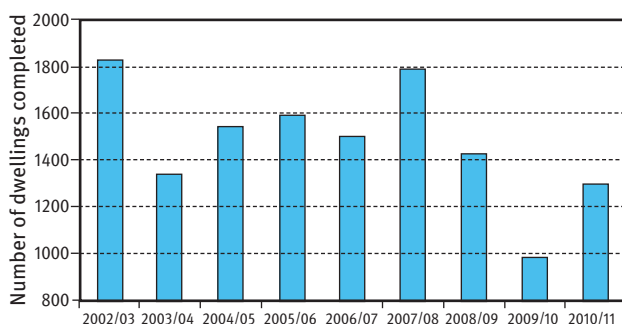
There are about 241,000 dwellings in East Sussex in 2011, an increase of 7% since 2001, slower than the national and regional growth. Eastbourne had the fastest growth in the county and accounted for almost one-third of the total growth.

There are currently 7,500 empty properties in the county accounting for almost 3% of all dwellings, 600 more than the previous year and higher than the national and regional average.

### Housebuilding starting to pick up

Almost 1,300 dwellings were completed in East Sussex during the financial year 2010/11, compared to about 1,000 in the previous year. An additional 7,000 dwellings were completed in the last five years, since 2006/07, which is an average of 1,400 dwellings a year, in line with the housing targets set out in the South East Plan.

### *Number of dwellings completed in East Sussex, 2002-2011*



Although the Regional Spatial Strategies will be abolished under the Localism Act, the South East Plan remains part of the Development Plan and local planning authorities continue to bring forward their Local Development Frameworks (LDFs) and to decide on the level of housing provision.

Over 30% of all completions in East Sussex were affordable dwellings (social rented and intermediate housing) in 2010/11, compared to 27% in the previous year.

The proportion of dwellings completed on brownfield sites, or previously developed land (PDL), was just above 75% in 2010/11, which is above the national annual target of at least 60%. The percentage of dwellings built on PDL in East Sussex has stayed well above the Government's target for the past nine years.

In 2010/11, almost 72% of total dwelling completions were on large housing sites with more than 10 dwellings, compared to 59% in the previous year.

### Plans for future housebuilding

The South East Plan set out a requirement for 22,900 dwellings to be completed by March 2026. Around 12,400 dwellings already have planning permission or are allocated for development in the Local Development Frameworks across East Sussex as at 1st April 2011.

The majority of committed dwellings will be built on larger housing sites (with more than 10 dwellings) and almost 18% of the total will be affordable (social rented and intermediate housing).

The proportion of dwellings planned to be built on PDL will be lower than the past as large amounts of new housing will have to be built on Greenfield sites (land that has not previously been built on).

# Population and housing

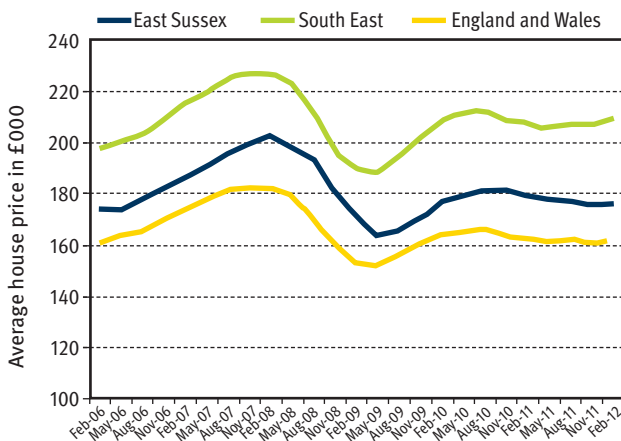
## Housing affordability remains an issue

The average house price in East Sussex was approximately £177,000 in February 2012, £32,000 below the average for the South East region and £15,000 above the national average. House prices have dropped by 1.6% since February 2011.

The economic downturn has had an impact on the house prices in East Sussex, as well as nationally and regionally. House prices fell sharply in 2008/2009 and started to increase again in mid-2009 to an average of £180,000.

The number of transactions (buying and selling) fell from a monthly average of 1,200 in 2007 to about 650 from 2008 onwards.

### Average house prices in East Sussex, 2006-2012 (£)



The county house price inflation is fuelled by the high number of households moving into East Sussex from other higher-priced areas and because some residents are able to live here while commuting to better-paid jobs outside the county. As a result, houses are less affordable in the county than in the rest of the South East region and nationally.

Housing affordability can be measured by comparing the price of a semi-detached house with the average full-time male earnings. After a drop to almost 7 in 2009, the house price earnings ratio increased again to almost to 8 in 2011.

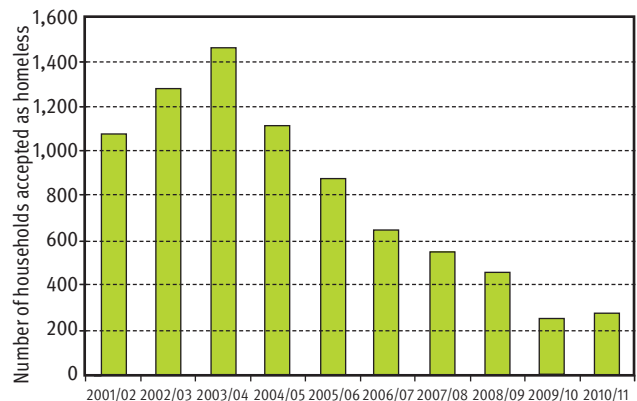
## Increasing demand for social housing

There are 25,900 council and housing association homes in East Sussex, which makes up 11% of all dwellings. The social housing stock has increased by 2% since 2001. However, the number of households on the waiting list has increased by 41% since 2001 to almost 11,000 in April 2011.

Over four-fifths of the households on the housing register require dwellings up to two bedrooms, whereas only 4% need more than three bedrooms.

The number of households accepted as homeless by local authorities in East Sussex has reduced since 2003/04, from 1,460 to 270 in 2010/11, which represent 2.5% of all households on the housing register, in line with the national and regional average.

### Households accepted as homeless in East Sussex, 2001-2011



About 16,000 (or 60%) of social housing dwellings in East Sussex are Registered Social Landlord (RSL) housing and the remaining 10,000 are local authority houses. In 2011, the average rent for the RSL houses was about £83 a week, whereas the LA weekly rent was almost £67. Both social rents have increased since 2001, from a weekly average of £59 for the RSL houses and £48 for local authority.

The number of council houses sold in East Sussex through the right-to-buy scheme has dropped from 220 in 2003/04 to 18 in 2010/11.

## Transport

- Congestion levels decreasing.
- Road traffic casualties lowest level in a decade.
- Bus passengers increasing.

### Local Transport Plan 2011 – 2026

In 2011 the County Council published its third Local Transport Plan (LTP) which sets out the future direction for transport and investment in infrastructure and services up to 2026. The high level objectives of the strategy are to:

- improve economic competitiveness and growth; and
- improve safety, health and security, while also tackling climate change, improving accessibility, social inclusion and quality of life.

The LTP strategy focuses on planning and providing a transport infrastructure that delivers economic growth in our priority areas identified as needing greater investment for regeneration and development - Hastings and Bexhill, Eastbourne, Hailsham and south Wealden, Newhaven and Uckfield.

The LTP strategy will be delivered through a series of LTP Implementation Plans, the first of which covers the period 2011/12 to 2015/16. This summarises the issues and describes the types of measures to be implemented in each of priority areas identified above and three broader areas – North Wealden and North Lewes; Lewes, South Downs and Southern Coastal Towns and Battle, Rye and rural Rother - covering the rest of the county.

The ability to deliver the measures identified will be subject to the level of funding available, and will be reviewed annually to ensure that it includes the transport infrastructure improvements required to

support development coming forward through the district and borough councils' Local Plans.

These transport infrastructure needs will be identified in their borough/district's Infrastructure Delivery plans and will help inform the establishment of their Community Infrastructure Levies (CIL). CIL will be used by the borough and district council's to fund the delivery of critical and important infrastructure required as a result of development.

### Traffic growth and congestion declining

Traffic monitoring in the county from 2000 demonstrates that traffic levels increased annually until 2007, and since then there has been a gradual decline each year. In 2007 4,332 million vehicle kilometres were driven on the county's roads, reducing to 4,135 million in 2010. The reduced traffic levels could be a reflection of the wider economic situation and the higher cost of fuel.

Congestion data produced by the Department for Transport (DfT) identifies that there has been a small improvement in average vehicle speeds<sup>1</sup> of 1.1% between May 2010 and May 2011 (from 29.5mph to 29.8mph) and an equal improvement in average time<sup>2</sup> taken to travel one mile (from 2.03 to 2.01 minutes per mile).

All schools in the county have developed School Travel Plans which aim to increase the number of children travelling to school by sustainable means. Between 2006 and 2010 there has been a decrease of 6% in the number of children travelling to school by car.

<sup>1</sup> Average vehicle speeds on A roads in the mid week morning peak period (7-10am)

<sup>2</sup> Average vehicle journey times on A roads in the mid-week morning peak period (7-10am)

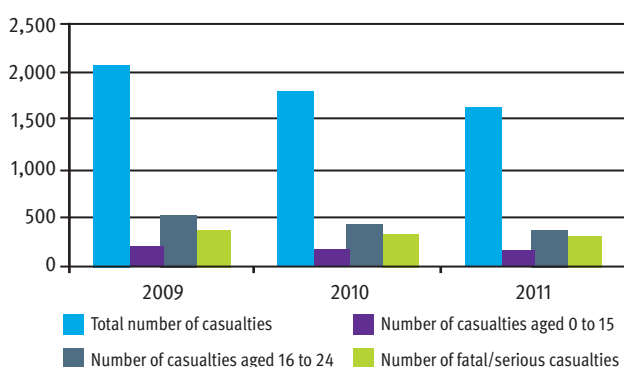


## Road traffic casualties falling

In 2011 there were 1,628 casualties on the roads in East Sussex. This compares to 1,799 the previous year and 2,058 in 2009, a rate of decrease that we are working hard to continue. This reduction is mirrored in the decreasing numbers of people killed or seriously injured on the roads; 302 in 2011, 18 fewer than in 2010 (a 5.6% decrease) and 71 fewer than in 2009. The number of children killed or seriously injured has also decreased from 26 in 2010 to 17 in 2011. Overall the figures show that 2011 had the lowest number of casualties in all categories (fatal, serious and slight injuries) than in the previous ten years.

The number of actual collisions has reduced by almost 11% from 2010 to 2011 which may be due in part to reduced traffic levels. Analysis shows that one of the most vulnerable groups, who figure disproportionately in the number of casualties and collisions, are 16 to 24 year olds.

### Road traffic casualties 2009 – 2011



The Sussex Safer Roads Partnership, a cross boundary partnership committed to improving safety on the roads, continues to monitor the number of casualties and collisions involving this group to ensure that targeted action can be taken as appropriate.

## Road and footway maintenance improving

The county's principal, non-principal and unclassified roads are surveyed every year to assess where maintenance should be considered. In 2010/11, 10% of both the principal and non principal roads required maintenance, an improvement on previous years, while 15% of unclassified roads, which generally carry lower levels of traffic, were in need of maintenance.

Over the past two years the County Council has invested an extra £8.5 million (£23 million in total) in an intensive programme of highway resurfacing schemes to bring the A and B class roads to a better condition level, to allow for greater control and efficiency in the management of the highway asset and a reduction in the amount of reactive maintenance needed. Over the past two years 206 schemes have been delivered as planned, valued at £22.8m. In total over 148km of the A and B class road network has been resurfaced using 115,000 tonnes of material to date.

Following the severe winter weather in late 2010 early 2011, several thousand pot holes have been filled and a programme of patching, using the government emergency winter grant of £2.6 million, has been completed, repairing some of the damage.

We continued to invest in footway maintenance, resulting in an improvement of 3% in the proportion of footways needing remedial work in 2010.

## Bus passengers increasing

The number of bus passenger journeys made in East Sussex in 2010/11 increased by over one million (5.7%) compared to 2009/10, to a total of 20,140,939 as reported by the bus operating companies.

A range of improvements to services and infrastructure were implemented including the expansion of the PlusBus ticketing scheme in Seaford and Lewes to improve bus and rail integration; the Day Explorer ticket scheme, promoted through advertising on buses and timetable leaflets; infrastructure improvements along the A259 between Peacehaven and Brighton, allowing increased frequency of buses on the route and an increase in passengers.

Improvements to the availability and accuracy of bus information also took place in Hastings, Rother, Eastbourne and Hailsham. The County Council continues to fund the majority of bus services in a large area of the county outside the coastal strip.

A crucial issue for bus users is being able to depend on a high level of punctuality. In 2010 over 87% of services were observed to be punctual (defined as no more than 59 seconds early and 5 minutes late) during surveys carried out in spring and autumn.

## Rail passengers have highest satisfaction levels

The County Council works with the rail industry (Network Rail and the train operating companies) to protect and improve rail services in East Sussex. Achievements include a reinstated service to enable travellers to access the weekday Ashford/Brussels Eurostar service and an additional late service on the Uckfield to London Bridge line.

Southern have piloted a smart ticketing scheme called 'The Key' which will be introduced to the whole of Southern network by the end of 2012. The company reports

monthly on punctuality and in January 2012 (the most recent four week period) over 90% of trains were running on time. There are also 130 new Electrostar trains on order which will replace the existing rolling stock.

In 2011 Southeastern achieved their highest passenger satisfaction level ever at 83%, and 91.6% of trains arrived on time. Southeastern is now operating a 12 car service on the London to Hastings line during peak times. This reduces the requirement to split and join trains at Tunbridge Wells and therefore increases capacity.

Network Rail have started signalling improvements on the East Coastway line, to be completed by 2013, which will increase line speed and allow the potential for more trains.

## Accessibility

One measure of accessibility is the proportion of the population living within 30 minutes by bus of an arrival at a local town centre between 7 and 10 am and a return journey between 4 and 7pm. In 2011/12 this was calculated to be 71% of the population of the county. A further measure is the percentage of working age people (16 to 74) with access to employment by public transport or walking. The result for East Sussex for 2010, published in June 2011 by DfT, is 79.4%, confirming that this measure of accessibility remains relatively stable though there are variations between the urban and rural areas of the county. The Local Transport Plan Implementation Plan includes measures which will increase accessibility through walking, cycling and public transport.

## **Rights of Way in good condition**

There are 3,283 kilometres of Rights of Way in East Sussex. In 2009/10, a baseline condition survey of the entire Rights of Way network was completed to enable us to identify where maintenance and enforcement work was most needed. This showed that 99% of the network was available to path users.

These survey results are used to plan and carry out maintenance work on 'High Priority' Rights of Way. ('High Priority' Rights of Way, around 560km in total, are heavily-used urban paths and circular and long distance promoted routes). High Priority routes have a higher footfall in comparison with the rest of the network. Results in 2010/11 show that on these routes 90% of assets (such as sign posts, gates, bridges and stiles) were in good condition. We are also working in partnership with the South Downs National Park Authority to ensure that paths in the Park are maintained to a high standard.

## **Community transport schemes in most parishes**

The last three years have seen increased investment in community transport and closer working between the County Council and community transport operators. This acknowledges the important role these services play in supporting rural communities and particular groups who are unable to access conventional transport modes. By March 2012 over 90 parishes will have an operational community transport scheme and work will continue to explore ways to provide schemes for the remaining parishes and towns which have identified a need.

## **Newhaven Port – slight increase in activity**

In 2010 there was a small increase in activity at the port. The numbers of passengers travelling through increased by 3.7% to 253,000, though this is still 23% lower than in 2007. Passenger vehicles increased by

3.9% from 76,000 to 79,000. However, the amount of freight handled declined to its lowest level for ten years at 824,000 tonnes.

## **Gatwick Airport passengers increasing**

In 2011, around 33.6 million passengers used Gatwick Airport, up from 31.3 million the year before. This 7.3% growth is a reversal of the annual decline since 2007. The number of flights leaving from Gatwick in 2011 was 244,741, a 4.7% increase on the previous year, again reversing a decline since 2007.

There has been a 2.9% growth in the average load factor (passenger kilometres flown as a percentage of seat kilometres available) on the previous year up to 76.4%, with strong performance recorded on short haul and domestic routes.

The amount of freight handled at Gatwick in 2011 was 88,214 tonnes, 15% down on 2010. This measurement is prone to significant annual variation although the long term trend is one of decline.

## Environment

- Faster reduction in CO<sub>2</sub> emissions than targets.
- Road traffic is the main contributor to poor air quality.
- East Sussex officially declared in drought in February.
- Recycling rates have doubled in ten years.

### The Environment Strategy

Our local environment is important both as an asset to protect and as a resource to use and develop. It provides essential services: clean air and drinking water, the soil on which we grow our food, healthy seas for diverse marine life and sustainable fisheries, the open spaces that enable us to be physically and mentally active, and a distinctive and iconic landscape which underpins our tourism industry. Great strides have been made in improving the environment of East Sussex over the past ten to twenty years. For example, we have more than doubled our recycling rate in the past ten years. However, we still have enormous challenges, and also opportunities, ahead.

The Environment Strategy for East Sussex was developed in 2011 by a range of partner organisations and adopted as the county-wide Environment Strategy by the East

Sussex Strategic Partnership. It sets out a joint agenda for action to address the key environmental challenges and opportunities over the next fifteen years. This section focuses on five issues that the Environment Strategy addresses, as indicators of change in the quality of our environment.

### Climate Change: CO<sub>2</sub> emissions falling

Climate change is likely to mean hotter and drier summers, warmer and wetter winters, and an increased frequency, severity and cost of extreme weather events, including water shortages, heat waves, intense winter storms and flooding. The largest relative changes in temperature and rainfall in the UK will occur in the South East. For instance, we have just experienced the driest 10 months since 1888.

The Climate Change Act of 2008 set legally binding targets for reducing greenhouse gas emissions in the UK by at least 80% between 1990 and 2050. The County's Climate Change Strategy, agreed in 2009, commits to achieving the same target. To achieve the legally-binding target requires an average reduction of around 3% per year. Carbon dioxide (CO<sub>2</sub>), released primarily when fossil fuels are burned, is the main greenhouse gas contributing to climate change.

Data on CO<sub>2</sub> from businesses, housing and road transport are produced nationally by government, broken down by region

### Total tonnes of CO<sub>2</sub>, and per capita emissions, in East Sussex (2005-9)

Area	Year	Industry and Commercial	Domestic	Road Transport	Grand total	Population ('000s, mid-year estimate)	Per Capita Emissions (t)
East Sussex	2005	973.9	1254.3	987.5	3215.8	505.8	6.4
	2006	970.0	1255.5	969.6	3195.1	507.2	6.3
	2007	923.7	1226.4	978.1	3128.2	509.5	6.1
	2008	892.5	1217.3	940.7	3050.6	511.1	6.0
	2009	798.6	1102.2	901.3	2802.0	512.0	5.5

and Local Authority area. Emissions from gas and electricity use are based on fuel bills (other fuel bills are estimated), and transport emissions rely on A road traffic counts and the length of minor roads. Government estimates show that per capita CO<sub>2</sub> emissions in East Sussex have decreased by 14% between 2005 and 2009, from 6.4 tonnes to 5.5 tonnes. This is slightly below the national reduction over the same period of 16% and the regional reduction of 15%, but is a faster reduction than the annual decrease required. This is probably due to a range of factors, including the economic downturn.

The climate has warmed by 0.75°C over the last 100 years, and more than half of this warming has occurred since the 1970s. Further warming is inevitable due to current levels of greenhouse gases already released into the atmosphere. A number of measures are in place to enable us to adapt to the effects of climate change, for example long term flood and coastal erosion risk management plans. Progress in developing and implementing these plans rests mostly with the Environment Agency, supported by a number of organisations, including local authorities.

### **Air quality generally good**

Clean air is vital for human health. Air pollution is usually a mix of a range of pollutants from a number of natural and man-made sources, which can have an effect on human health and the wider environment. Research by the Department for Transport has identified that the measurable costs to society of poor air quality rank alongside congestion, traffic accidents and obesity, at about £10 billion per year. The Government's advisory Committee on the Medical Effects of Air Pollution estimates that poor air quality reduces average life expectancy over the whole population of the UK by about 7-8 months. In practice, most people are likely

to experience little effect whilst a vulnerable minority, for instance the very old, very young, and those with respiratory disease, may have a significantly reduced life expectancy.

The national Air Quality Objectives are standards designed to protect human health, based on World Health Organisation guidelines, which in turn are based on current scientific data on the health effects of air pollution. They can be used as a benchmark to see if air pollution is getting better or worse over time. The Environment Act 1995 place a duty on local authorities to review the air quality in their area on a regular basis against these Air Quality Objectives.

The local authorities in East Sussex run an air quality monitoring network, which shows that air quality in East Sussex is generally good, with exceptions along roads in Lewes, Newhaven and Hastings. In these instances the local authorities have developed air quality action plans that are intended to improve local air quality to meet the health-based standards. We also have some of the highest recorded levels of ozone in the UK.

A proportion of the air pollution measured in East Sussex originates from continental Europe, whilst the majority of the air pollution generated locally comes from traffic. A number of measures are included in the Local Transport Plan aimed at reducing this contribution, in particular in areas identified as having poor air quality. In addition, the local authorities run a free air pollution alert service ([www.airalert.info](http://www.airalert.info)) which aims to help those most susceptible to the effects of poor air quality by providing an early warning of pollution events, to enable people to modify their behaviour or medication accordingly.

The national Air Quality Strategy 2007 highlights that most policies and actions to improve air quality will also have benefits for

climate change by reducing CO<sub>2</sub> emissions, and vice versa. However, some policies don't achieve these win-win situations. For example, the gradual increase in diesel vehicles in the national fleet reduces CO<sub>2</sub> emissions but increases air pollutants that impact on health.

## Water resources and water quality

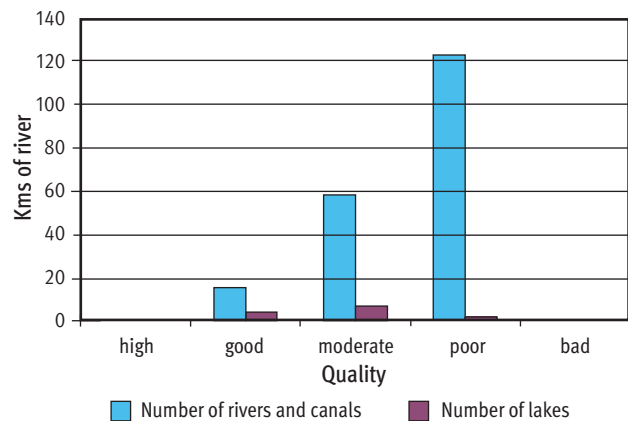
### Water quality meets standards

Groundwater and rivers provide a vital source of water for domestic, agricultural and commercial use, while beaches and bathing waters represent an important resource for tourism and recreational activities. Water quality is estimated by using surveys and assessing the results against national and European standards.

The Bathing Water Directive (76/160/EEC) sets water quality standards for 15 beaches in East Sussex based on measures of microbiological, physical and chemical parameters. Samples of bathing water are taken at regular intervals during the bathing season, covering the period from mid-May to end of September. All relevant beaches in East Sussex have complied with the mandatory standard set out in the Directive since 2000.

Freshwater quality is assessed by the Environment Agency. The method of assessment changed in 2007 following the introduction of the Water Framework Directive, to give a more sophisticated assessment of the whole water environment. This includes an assessment of water quality, quantity and physical habitat, to give an overall assessment of ecological status, which is assessed as either high, good, moderate, poor or bad, where high represents 'largely undisturbed conditions'.

### Biological quality of rivers, canals and lakes in East Sussex (2009)



### Water Resources under pressure

About 70% of water supplies in our region are taken from underground sources, with the remainder coming from rivers and storage reservoirs. Consumers are using, on average, approximately 50% more water than 25 years ago due to the increased use of washing machines and dishwashers, people taking more baths and a growing interest in leisure gardening. The South East of England has some of the highest per capita consumption values in the UK, with demand close to exceeding currently available sustainable supply. The projected increase in the number of households in East Sussex will increase the pressure on this limited resource, as will the effects of climate change.

The water companies operating in East Sussex, namely Southern Water and South East Water, have put forward plans to 2035 to manage water demand, for instance by improving water efficiency in new and existing homes and businesses, and by providing new water resources. In the meantime, in February 2012 East Sussex was officially declared by the Government as being in a state of drought, following two relatively dry winters.

## Biodiversity conditions – mixed picture

Biodiversity encompasses the whole variety of life on Earth, namely all plants and animals and the complex ecosystems of which they are a part. Biodiversity brings benefits to health and the local economy, for example providing recreation and education resources for people of all ages, which help to attract significant numbers of visitors to East Sussex. The County has received national and international recognition for its countryside, bird habitats, fisheries, sites of special scientific interest and coastline.

Securing a healthy, resilient, productive and diverse natural environment is a Government priority, and the East Sussex Environment Strategy includes various biodiversity priorities. In 2012, the protected chalk downland will have renewed focus with the successful bid for Nature Improvement Area Status by the South Downs National Park resulting in closer working between neighbouring farms, additional scrub management and more Exmoor pony grazing alongside the cattle and sheep.

The East Sussex Downs will also see significant improvements for farmland bird and butterflies as some areas of grassland are ploughed up for arable crops with beetle banks, poppy dominated, flower rich strips and bird seed plots in the fields. Off the Downs significant management is taking place at our heathlands at Ashdown Forest, Broadwater Forest and Brede Woods. Maintaining the surviving field systems and traditional land management practices of the Weald is more challenging under current schemes. For instance, the small flower rich meadows are scattered randomly across the county making it difficult for landowners to co-operate and co-ordinate hay production.

The current state of biodiversity in East Sussex shows both positive and negative trends. 72% of Sites of Special Scientific Interest (SSSIs) in East Sussex are in

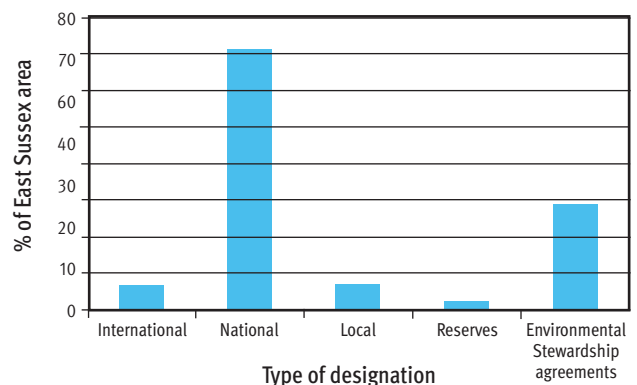
unfavourable condition but recovering and 26% are considered in favourable condition, which is an improvement over previous years. The number of Sites of Nature Conservation Importance in positive management has also increased in 2011-12.

However, some species have seen a significant decline. The water shortage in 2012 is likely to have significant impacts for the wetland wildlife of Romney Marsh, the river valleys and Pevensey Levels. Woodland birds have decreased by approximately 50% since 1994 and woodland butterflies by two thirds in the last two decades, probably reflecting the neglect and inappropriate management of woodlands.

Opportunities to improve biodiversity include access to the national Environmental Stewardship Scheme until December 2013. This is available to many landowners in East Sussex and can provide stability of income for rural businesses, landowners and farmers as well as providing opportunities to maintain the landscape, improve habitats for wildlife and reduce the risk of flooding and erosion. The scheme currently brings in more than £6 million to East Sussex each year, and covers approx 60% of the county's countryside. This is lower than the national coverage of 67%, despite a significant proportion of East Sussex being eligible for the schemes.

## Designated sites and reserves in East Sussex

Note: Some areas are covered by more than one designation, therefore the total is more than 100%



## Green open spaces

These spaces include open access land, commons, woodlands and nature reserves, or a combination of these, often under a wide range of public or private ownership. Access to natural green space provides 'ecosystem services' such as clean air and water, food and raw materials, health benefits through exercise and are important assets for the local tourism industry. Borough and district councils are required to set out the open space needs for their area as part of their land use planning process, measured against the national Access to Natural Greenspace Standard (ANGSt).

Currently, over 90% of the county's population has access to a green open space of 20 hectares or more within 2km of their home, and over 85% of the population has access to a 100 hectare open space within 5 km of their home. With the work to improve access to the Combe Valley Countryside Park in 2012-14 (previously named the Pebsham Countryside Park) over 85% of the county's population will have access to a green open space of 500 hectares in size within 10 kms of their home.

A key area of open space is the new South Downs National Park, which replaced the Sussex Downs Area of Outstanding Natural Beauty (AONB) from April 2011. The key duties of the National Park are to:

- conserve and enhance the natural beauty, wildlife and cultural heritage of the area; and
- promote opportunities for the understanding and enjoyment of the Park's special qualities by the public.



## Minerals and waste

- Only one landfill site remains in East Sussex.
- Newhaven Energy Recovery Facility increasing in capacity.
- East Sussex exporting some of its waste to surrounding counties.

### Waste production declining

In 2010/11 approximately 259,000 tonnes of municipal waste were produced in East Sussex, a slight increase on the previous year. Municipal waste is mainly household waste plus some trade waste, street sweepings, and parks and gardens waste collected by local authorities. However, the amount of municipal waste produced in East Sussex has declined in recent years.

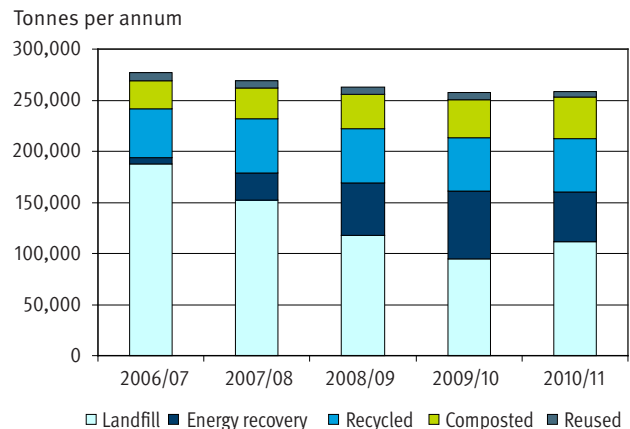
This may be due to the economic downturn, as well as local and national campaigns aimed at reducing waste and a wider awareness of the need to minimise waste.

However, municipal waste is estimated to comprise only 21% of the total waste produced in the county. Commercial and industrial waste comprises around 27%, while construction, demolition and excavation waste makes up around 51%. However, data is scarce for these waste streams, so the figures are only estimates.

There was a small increase in municipal waste sent to landfill, but the figure of 43% is still very low compared with 74% in 2004/05. This figure is expected to decrease sharply once the Newhaven Energy Recovery Facility is fully operational.

There is only one landfill site remaining within East Sussex, located at Pebsham, and this is expected to reach capacity within two to three years. This lack of capacity means significant quantities of residual waste are currently being exported from East Sussex to surrounding counties.

### Municipal waste tonnes per annum 2006/07 - 2010/11



## Minerals

Supplies of minerals in East Sussex are taken from the ground, recycled to be used again, dredged from the sea, and imported by sea.

Minerals in East Sussex are often found in environmentally sensitive areas such as the South Downs National Park. The county has to make sure that enough mineral (including sand and gravel) is available for development in the area and that other development does not prevent access to these minerals in the future.

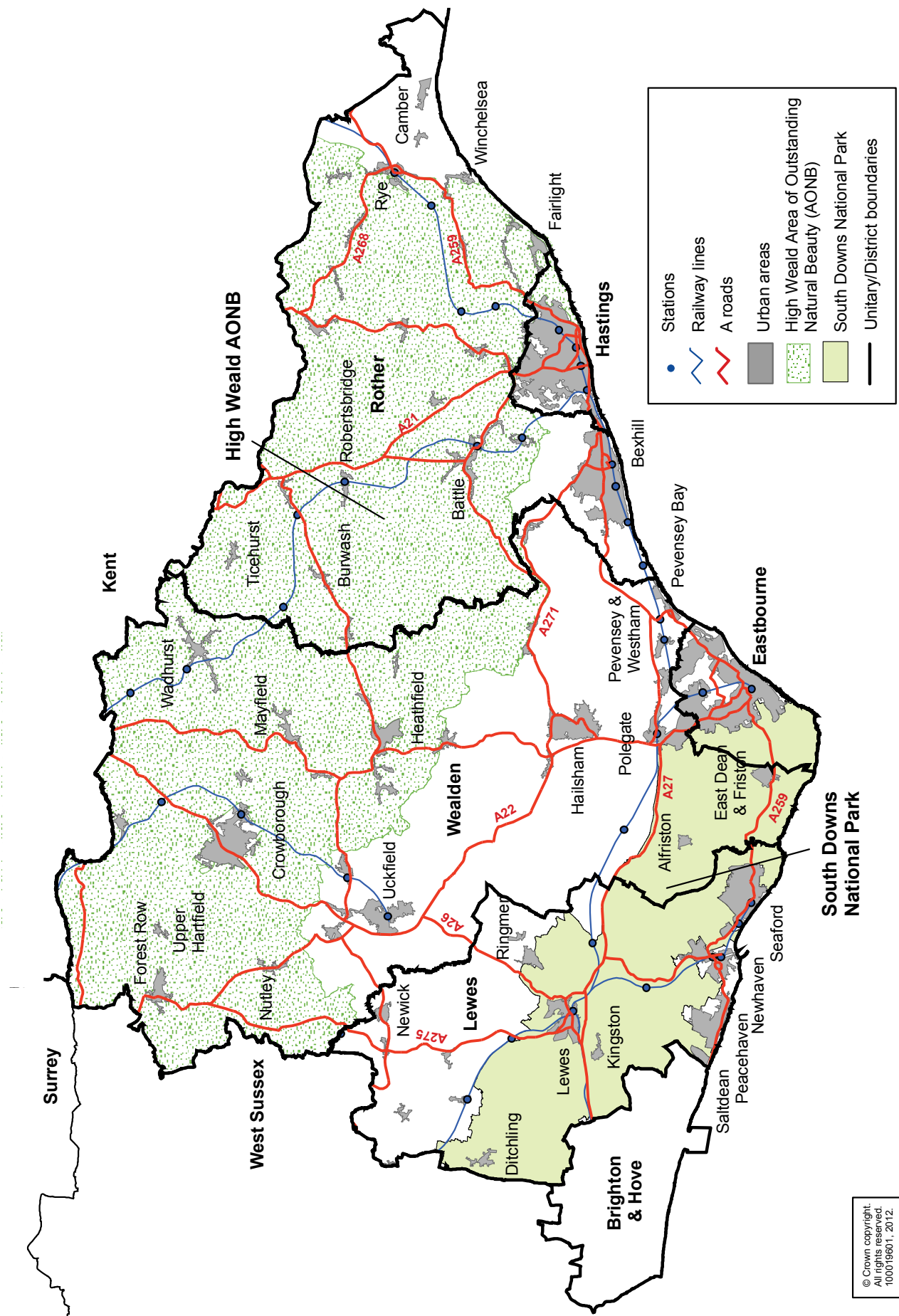
There is one small active building sand extraction site in the west of the county. Marine dredging and importing has been reasonably stable in recent years.

There are several sites producing clay tiles and bricks, and these have been producing more clay in recent years. There are no active chalk quarries in the county and this is not likely to change in the immediate future as much of the chalk is within the newly designated South Downs National Park. Gypsum is mined and processed at Brightling and Robertsbridge. There is continued demand for natural gypsum, importation of man-made gypsum and reprocessing of plasterboard.

# Equalities data

Protected characteristic		East Sussex	Eastbourne	Hastings	Lewes	Rother	Wealden
	Total population, 2010	515,500	97,000	87,200	97,500	89,800	144,100
Age	Population, 0-15 (%)	17.6	17.0	19.0	17.4	16.2	18.2
	Population, 16-64 (%)	58.9	59.8	63.1	58.8	55.0	58.3
	Population, 65+ (%)	23.5	23.2	17.9	23.8	28.8	23.5
Disability	Limiting long-term illness, 2001	88,983	17,516	16,698	16,124	16,887	21,758
	Projected LLTI, 2010	105,047	20,739	19,232	19,262	20,044	25,770
	Projected LLTI, 2026	124,992	24,126	22,202	22,787	23,719	32,158
	Projected disability, 2010	85,428	16,937	15,563	15,670	16,403	20,855
	Projected disability, 2026	103,415	19,989	18,248	18,878	19,728	26,571
	Employment & Support Allowance and Incapacity Benefit (Aug 2011)	19,980	4,340	5,760	3,100	3,230	3,540
	Disability Living Allowance (Aug 2011)	24,780	5,160	6,110	4,150	4,390	4,960
<b>Gender reassignment</b> : data not available							
Pregnancy & maternity	Live births (2010)	5,364	1,163	1,147	980	752	1,322
	Live births per 1,000 females (2010)	64.5	66.0	68.9	63.6	62.0	61.9
	Live births by mother's country of birth - UK (%) (2010)	86.8	79.3	85.0	90.2	90.8	90.2
	Teenage pregnancy, rate per 1,000 females (2007-2009)	37.2	47.5	55.8	33.1	35.8	22.6
Race	White British (%) (2009)	89.5	87.6	87.0	90.6	90.9	90.8
	Black and Minority Ethnic group (BME) (%) (2009)	10.5	12.4	13.0	9.4	9.1	9.2
Religion (2001)	Christian (%)	73.6	72.8	67.4	72.0	76.5	77.2
	No religion (%)	16.5	16.7	21.4	18.2	13.9	13.9
	Religion not stated (%)	8.1	8.1	9.3	8.2	8.1	7.4
	Muslim (%)	0.6	1.0	0.7	0.4	0.6	0.4
	Other religion (%)	0.5	0.5	0.5	0.4	0.3	0.7
	Buddhist (%)	0.3	0.3	0.3	0.3	0.2	0.2
	Hindu (%)	0.2	0.2	0.3	0.1	0.1	0.1
	Sikh (%)	0.0	0.1	0.0	0.0	0.0	0.0
Sex	Male (%) (2011)	47.9	47.3	48.5	48.2	47.4	48.2
	Female (%) (2011)	52.1	52.7	51.5	51.8	52.6	51.8
<b>Sexual orientation</b> : data not available							
The Government estimates that 5-7% of population is Lesbian, Gay and Bisexual.							
Marriage	Single (%)	24.6	28.2	29.8	24.2	21.4	21.4
	Married & remarried (%)	53.2	46.7	45.7	54.8	55.7	59.5
	Separated and divorced (%)	11.6	13.3	14.9	10.7	10.5	9.9
	Widowed (%)	10.6	11.8	9.6	10.3	12.5	9.3

# Transport map of East Sussex



## Research and Information

### Keeping you informed about East Sussex

The Council's Research and Information Team supports the strategic planning activities of the Economy, Transport and Environment Department and provides information and advice to help plan and review services across East Sussex.

The Research and Information Team has developed the East Sussex in Figures (ESiF) Local Information System to transform the way that everyone can access and share detailed information about the county and its communities. ESiF responds to the growing needs of local authorities and their strategic partners, with reliable and up-to-date information on many different topics to help develop, monitor and review community strategies and other important service plans for improving social, economic and environmental wellbeing in East Sussex.

ESiF is very flexible and makes it easy for you to get the information you need, just as you want it – as a table, chart or map for the particular time periods and places you are interested in. For more information, visit [www.eastsussexinfigures.org.uk](http://www.eastsussexinfigures.org.uk) or contact the ESiF co-ordinator, Tim Carpenter (details below).

If you have any questions or need specific information about East Sussex, please get in touch with any member of the Research and Information Team (their contact details are below).

Kim Bloxham	Research and Information Team Manager (part-time, job share)	<a href="mailto:kim.bloxham@eastsussex.gov.uk">kim.bloxham@eastsussex.gov.uk</a> 01273 482199
Bryan Butterworth	Research and Information Team Manager (part-time, job share)	<a href="mailto:bryan.butterworth@eastsussex.gov.uk">bryan.butterworth@eastsussex.gov.uk</a> 01273 482198
Helen Joslin-Allen	Principal Planning Research Officer – Economy	<a href="mailto:helen.joslin-allen@eastsussex.gov.uk">helen.joslin-allen@eastsussex.gov.uk</a> 01273 481346
Tim Carpenter	East Sussex in Figures Co-ordinator	<a href="mailto:tim.carpenter@eastsussex.gov.uk">tim.carpenter@eastsussex.gov.uk</a> 01273 482030
Lenna Santamaria	Planning Research Officer – Economy	<a href="mailto:mariahelena.santamaria@eastsussex.gov.uk">mariahelena.santamaria@eastsussex.gov.uk</a> 01273 481619
Maura Badoni	Planning Research Officer – Demography and Housing	<a href="mailto:maura.badoni@eastsussex.gov.uk">maura.badoni@eastsussex.gov.uk</a> 01273 482152
Linda Allen	Research and Information Officer	<a href="mailto:linda.allen@eastsussex.gov.uk">linda.allen@eastsussex.gov.uk</a> 01273 481607