

BUFORI La JOYA. Be Unique



*Bufori*

STATEMENT OF PRIDE



# A LABOUR OF LOVE

Details are our obsession.

Each member of the BUFORI team is a specialist in their field and this is reflected in every square centimeter of the La Joya. The front grill of the BUFORI La Joya for instance is beautifully crafted from stainless steel and hand polished to perfection. A task that takes several hours to complete.

**The secret of BUFORI's success lies in our uncompromising** pursuit of excellence in achieving the best possible result. This is valid for every **component of the motorcar, great and small. Even if it's hidden far from view, beneath the exterior of the car. The care taken** and the pride in craftsmanship flows throughout the entire vehicle, inside and out. Be it the fuel tank, the chassis or the French polished walnut dash. All parts are lovingly made and designed to last for decades.

May it be the fuel tank or the chassis, all parts are designed to last for decades.

The discerning details on the La Joya are endless. Every time you cast your eyes over the car you will discover some new aspect that will **captivate your senses**. The unique door handles, the embroidery on the seats, the hand stitched leather or the sheer beauty of the silhouette.

This is the level of quality that we expect from our cars, and this is what makes our owners **appreciate** it so much.

**Opposite page:** Detail of the hand-polished stainless steel front grill of the BUFORI La Joya.

# PRECIOUS AND RARE

The name "La Joya" is Spanish for "The Jewel" and there is a good reason why we chose to call the BUFORI MKIII "The Jewel". It truly is individualised and as precious as a rare gem. A perfectly orchestrated symphony of beauty and strength that combines classic elegance with the driving dynamics of all the latest in automotive technology.

To properly appreciate the intrinsic value of a BUFORI, one must acknowledge our overriding philosophy. To **only** use the **finest** materials the world has to offer and compliment this with honest craftsmanship. Meaning each and every single component tells a worthy story. Being made to order, every unit therefore leaving our manufacturing facility is as unique and noble as a piece of **art**. Thus BUFORI will always remain rare and exclusive in view of their individualism the materials used, and the limited number of orders that will be taken. Making every vehicle inherently **precious**.

**Opposite page:** Detail of the hand-polished stainless steel La Joya emblem.

**Below:** Clock with 24k gold plated bezel, detail of stitching on leather seat.



Le Mans



# TIMELESS AND ELEGANT

The BUFORI La Joya features the elegant lines of an ageless classic. Not surprisingly, some compare the appearance of the La Joya to that of the finest vehicles of the early 1930's, when the world's greatest automotive stylists sought to outdo one another in crafting beautiful bodies for Duesenberg, Pierce Arrow and Packard. Yet try as you may you will never find one exactly the same as ours. The gorgeous styling of the BUFORI La Joya is reminiscent of the classics but ultimately unique to itself and like no other.

The refreshing blend of classic elegance and modern components make the BUFORI La Joya a timeless statement of automotive style, a car with a strong personality, made for strong characters. Elegant yet, dynamic, gentle yet robust, classic and yet daring. It is the very manifestation of beauty and perfection.

Opposite page: BUFORI La Joya in various colour combinations

Below: BUFORI La Joya in red, BUFORI La Joya detail.







# ADVANCED AND SAFE

Underneath the refined classic look, the BUFORI La Joya discretely incorporates **state-of-the-art technology**.

Homologated to European standards by the German TÜV, the heart of the La Joya is a 2.7 litre quad cam 172hp V6 engine which is mid mounted just ahead of the rear axle. It is a very reliable power plant which will allow you to drive the La Joya with confidence. However, for those who require some additional power, super charging is an available option.

The independent double wishbone suspension front and rear are fully adjustable and will be fine-tuned to your personal preference. Whether that be firm for a dynamic driving experience, or soft for increased travelling comfort.

The body is made of a **Carbon fibre and Kevlar** composite material, a technology used in aerospace and Formula 1 racing. The light and strong carbon fibre is woven together with the strong and flexible Kevlar to form a specially designed pattern. The result is a light and incredibly strong and ultra-resistant body. The material is moulded in such a way to form crumple zones at strategic points, which effectively absorbs more energy in an impact providing greater protection for the passengers than any metal used in most other vehicles. Furthermore, only the damaged part of the body would need to be remoulded and replaced, a highly cost-effective method.

Every part of the vehicle has literally been designed for **easy servicing**. The whole engine block can for instance be removed by unlocking only 6 bolts. The power window lift module can be removed in one simple movement to conduct effortless maintenance.

The classic design and styling belies the multitude of contemporary **safety** features. Which include an anti-lock braking system (ABS) with electronic brake-**force distribution (EBD)**, **traction control**, **driver's airbag**, **seatbelt pre-tensioners** and a tyre pressure monitoring system (TPMS). In the rare case of a flat tyre, you would simply use the Conti Kit. A device that quickly and easily inflates a punctured tyre..

**Opposite page, clockwise:** reinforced Carbon Fibre and Kevlar composite body, power assisted four wheel ventilated disc brakes, nautical style tachometer, electronic seat switches.

# STYLISH STATEMENT

Our craftsmen are genuine artists. Their motivation is deeply rooted in the pride of creating masterpieces that touch people's hearts. BUFORI owners are artists too, with the freedom of expressing their personal style by customising the design of the vehicle. This blending of styles ensures that no two BUFORI's are exactly same. Each BUFORI therefore that comes into the world is as unique and individual as a new born baby. This is our inspiration, day by day.

Owning your very own BUFORI is a statement and physical manifestation of your style. Perfectly reflecting and indulging the personality of its owner. So driving your own BUFORI is akin to adorning yourself with your own stylised hand crafted piece of jewellery that wears you and is testament to one's appreciation for the finer things in life. In driving from A to B you may find yourself at C and D as well.

Be it the scent of the world's finest leather, the awe inspiring French hand-polished walnut burl, the noble gold plated instrument bezels or the exquisite hand-stitching on your steering wheel. Wherever you cast your eyes there is detail there to captivate you.

With a thermally and acoustically insulated cabin, you will have the feeling of flying elegantly over the road. For the first time, you might even welcome traffic jams as you have the chance to spend more time in the relaxing cabin of the La Joya, contemplating the finishing touches that make it so special. All whilst taking in the looks of admiration and envy from those around you.

For driving a BUFORI may be a self indulgence for the owner driver. But it will certainly have an impact on your environment as well. We admit that it is somehow difficult to keep a low profile in a BUFORI La Joya, since many people will be turning their heads and walking into telegraph poles as you go by. Testament to this are the countless stories from the worlds media who have witness this first-hand.

Opposite page, clockwise: Elegant silhouette of the dashboard, details of the refined door panel, detail of the hand-stitching on the leather and wood steering wheel, leather seats.







# PREMIUM QUALITY

The name BUFORI is synonymous with quality, as we only use the best. Be it the selection of the mechanical parts, the leather, the electronics or any other component both seen and unseen - only premium parts are used to custom build your dream car.

Have a look at our European leather hides. The cattle is only bred for its hide, not for its meat, nor its milk. They are protected from insects and electrical fences. A mere mosquito bite is regarded as an imperfection and disqualifies the hide from being used in a BUFORI. Moreover, the colour treatment adds to the durability of the car. Fully impregnated, the leather will be resistant to scratches and friction. On top of this, our skilled craftsmen omit the belly-zone of the hide. This is one example of the countless stories behind the **premium components that make up BUFORI**. The quality we source and produce.

**Choice** is true luxury and variety is the spice of life. Just two of countless luxuries afforded to any BUFORI owner. The only limitation being your imagination. In fact, the body colour can be matched by 99% with any colour sample chosen by the customer. If you so desire, you can **invent a colour scheme with paints or pick your favourite flower and we'll match it. Similar accuracy rates are obtained to match** the colour of the upholstery and carpets. By request, the initials or name of the owner can be sewed into the fine leather. Even the perforation distance for the stereo speakers or various types of stitching can be chosen. Not to speak of the density of the armrest, which is literally customised to the comfort of the driver. As a special feature, BUFORI would even mount precious gem stones of your choosing within the car interior.

BUFORI owners have total freedom of expression and the La Joya is a reflection of their sophisticated personality and refined taste.

Customisation options are therefore truly endless and most of the time, it is more difficult to formulate a specific wish than for the BUFORI team to make it happen. Exclusivity made by BUFORI - **Be Unique!**

**Opposite page, clockwise:** BUFORI sample case, BUFORI La Joya in two tone body paint metallic, BUFORI La Joya in single tone body paint solid, detail of door panel - hand-stitched and hand-perforated.











24k gold plated instrument bezels. Classic style. Oil pressure meter, Quartz clock, Volt meter.



Multimedia System and Automatic Climate Control. GPS navigation system, Hi power amplifier, 5 speaker and 6 disc CD changer under the bonnet (optional).



Cooling box. Keep your drinks fresh at any time.



Luggage area. With a volume of 250L, there is enough space for a golf bag. The luggage for a weekend escape also perfectly fits in.

Leather covered key. With embroidered BUFORI B logotype, matching interior leather colour.



Hand French-polished walnut burl veneer. Tastefully integrated into the door panels and fascia panel.



Tyre Pressure Monitoring System. Designed to identify and display tyre operating data and activate an alert when pressure or temperature irregularities are detected. Beautifully mounted into the centre console.

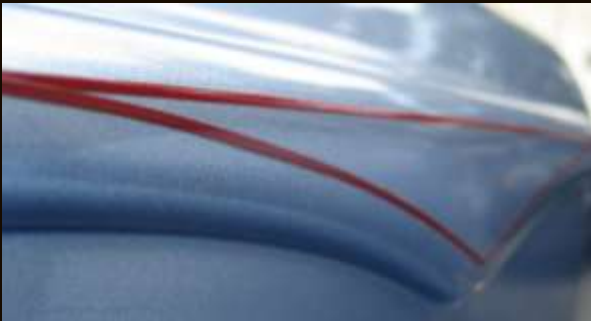


Embroidered BUFORI logotype to seat facings. Embroidery can be personalised. Also featured on steering wheel.





Wheels. 17" x 7" two piece magnesium alloy rims c/W polished stainless steel edge rim with Kevlar enforced Continental tyres 225/45 R17 91W.



Coach line. Single or double



BUFORI Bonnet emblem. Made of hand-polished stainless steel. Also available in 24k gold-plated.



Head lights. Quartz halogen. Stainless steel frame.

Rear lights.



Entrance strips on the door sills. With BUFORI emblem.



Detail of paintwork on the bonnet. BUFORI only uses the highest quality paints. A paintjob is only considered as completed when the painter in charge is fully satisfied with the work, regardless of how many layers of paint or hours of work it may take.



Toolbox. Under the bonnet lies a set of the finest quality tools.



*Buick*

V6

DOHC 24V

## STANDARD SPECIFICATIONS

### BODY

Two door 2 seater coupé, steel space frame chassis. Carbon fibre and Kevlar hybrid composite material. Hand-polished stainless steel front and rear bumpers. Hand-polished stainless steel front grill. Side impact protection in doors.

### INTERIOR

Fully insulated cabin against sound and heat. Driver airbag. Remote immobiliser and remote trunk release. Leather bound key. Full hand-stitched leather interior with hand-polished French walnut burl. 24k gold plated instrument bezels. One touch operated electric windows. Auto-dimming interior rear view mirror, leather covered. Automatic digital climate control air conditioning with heater. Electrically adjustable seats with climate control. Dual trumpet air horn.

### ENGINE

Rear mid-mounted quad overhead cam V6 engine 2656cc. Bore x Stoke: 86.7 x 75.0. Rear wheel drive with traction control. Compression ratio 10:1. Electronically managed ignition and fuel injection system. Power: 172hp@6000rpm (super charged: 238hp@6000rpm). Torque: 25kgm@4000rpm (super charged: 35kgm@4000rpm). Stainless steel 3 stage catalytic converters with oxygen sensors.

### TRANSMISSION

Sequential Shift Transmission (SST). 4 forward gears, 1 reverse gear.

### GEAR RATIOS

1st gear: 2.84  
2nd gear: 1.53  
3rd gear: 1.00  
4th gear: 0.71  
Reverse: 2.48  
Final drive: 3.77

### SUSPENSION

Front and rear: independent double wishbone with anti-roll bar, coil springs and adjustable shock absorbers.

### STEERING

Power assisted rack & pinion with adjustable steering column. Left hand drive or right hand drive.

### BRAKE SYSTEM

Four wheel ventilated disc brakes. Anti-lock braking system (ABS). Electronic brake-force distribution (EBD). Foot operated park brake.

### WHEELS AND TYRES

17" x 7" two piece magnesium alloy rims c/W polished stainless steel edge rim with Kevlar enforced Continental tyres 225/45 R17 91W.

### VEHICLE DIMENSIONS

Overall length: 4330 mm.  
Overall width: 1807 mm.  
Overall height: 1365 mm.  
Wheelbase: 2800 mm.  
Kerb weight: 1490 kg.  
Gross weight: 1640 kg.  
Luggage area: 250 litres.

### FUEL TANK CAPACITY

80 litres.

### FUEL CONSUMPTION

Average: 9.1 litres/100km.

### EMISSIONS

Emission standard: Euro 4.  
Comparative Co2 emissions: 298 g/km.

### SAFETY

Supplement Restraint Sytem (SRS): Driver airbag and pre-tensioned seat belts.  
Side impact protection in doors. Impact absorbing body with crumple zones.  
Conti Comfort Kit for tyre re-inflation.

### BODY COLOUR

Single tone-solid.

### PERFORMANCE

Acceleration: 0-100 km/h in 7.8s.  
Top Speed: 200 km/h.

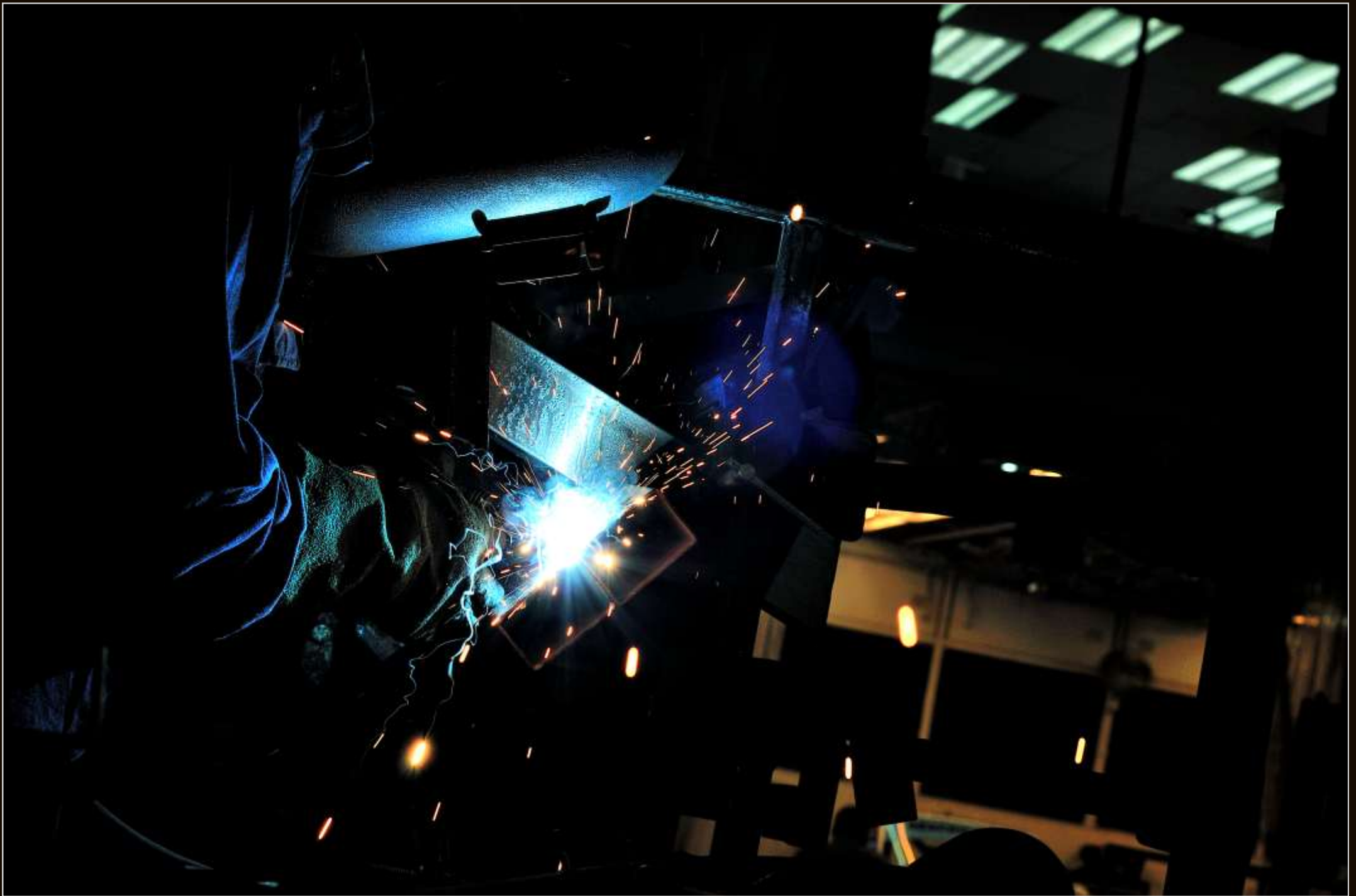
## AVAILABLE OPTIONS

Aqua intercooled super charger  
„La Joya“: precious stones of your choice: diamonds, emeralds, sapphires, rubies etc.  
Tailored indoor body cover.  
24k 99% pure gold bonnet emblem.  
Bufori floor mats set (3 pieces).  
100% silk persian carpets (3 piece set)  
Pneumatic seat massage system.  
Ergonomically designed cooling/heating box.

Multimedia system: Double DIN touch screen satellite navigation system. Hi power amplifier, 5 speaker & bluetooth (without handset)  
Electric cruise control incorporated in steering wheel.  
Sonar system: front & rear audio & visual distance control.  
Reverse camera with night vision system  
Digital tyre pressure monitoring system (TPMS).

### BODY COLOUR

Single tone metallic colour.  
Two tone solid or metallic colour.  
Special effect body colour. Single or tow tone.  
Single or twin coach line.





# SKILLED AND CREATIVE

Our most valuable assets are our skilled craftsmen, with their passion for perfection and their willingness to continuously improve every detail of our car. They work with precision and pride, obsessed by obtaining the best possible results. Technically well educated, and passionate at heart, we like to see our factory staff as artists working on a masterpiece.

Creativity is highly valued at BUFORI. Every individual worker is strongly encouraged to find new ways to overcome technical challenges. By thinking out of the box, we find innovative solutions every day. Solutions that help make our cars even better.

Working for BUFORI is also an affair of honour. This is one of the reasons why our team-members stay with the company for many years and patiently pass on their knowledge, wisdom and passion to the new members of staff.

**Opposite page:** Welding in the metal department.

**Below:** Engineering department, final assembling of the BUFORI La Joya.



# PATIENT AND SOULFUL

Our philosophy is to favour handwork over machinery wherever this is possible. Traditional craftsmanship, be it in the trimming department or the design studio, requires a keen eye and time. The time needed to execute tasks to perfection.

All fine things in life come with **patience**. Noble spirits such as Armagnac can lie in barrels for many years before reaching perfection. The best Bordeaux shall never be indulged prior to gaining maturity. Michelangelo painted the ceiling of the Sistine Chapel during 4 years. But the best example of all is to watch your children grow.

It is the same feeling for us. Building a BUFORI La Joya demands approximately 3,500 working hours and a lot of organisational **discipline**. But seeing the little parts slowly coming together to create an overwhelming big picture is still an **amazing** experience for us, even after so many years and units built. The effort and soul of each worker lies in every car, and we honestly admit that we have a hard time separating from them, and always like to follow their whereabouts.

All our customers undoubtedly appreciate the finer things in life, and they know how much care is put into their vehicle. At BUFORI, patience is always rewarded, and the result is simply **worth** waiting for.

To shorten the wait, every future owner will be given exclusive access to a personalised internet page where he/she will be informed about the production status of the car together with updated photos and comments from the engineer in charge. At BUFORI, you can witness the gestation and birth of your car.

**Opposite page, clockwise:** Hand Polished BUFORI stainless steel brightwork, fine leather being meticulously stitched to a steering wheel in the trimming department, carpet being cut, meticulous hand-painting process.



# CARING AND HELPFUL

When you purchase a BUFORI, you do not only buy a car, but also a **first class service**. Owning a La Joya automatically means that you belong to the BUFORI family and we care a lot about our family. No matter when, no matter where, BUFORI will **always** be there to assist you should you ever encounter an inconvenience with your La Joya.

Every BUFORI La Joya comes with a 2 year warrantee (or 60,000 kms, whichever comes first).

For exported cars, we offer free parts replacement and service parts for 2 years (excluding fluids). Furthermore, BUFORI guarantees a worldwide part backup within 48 hours.

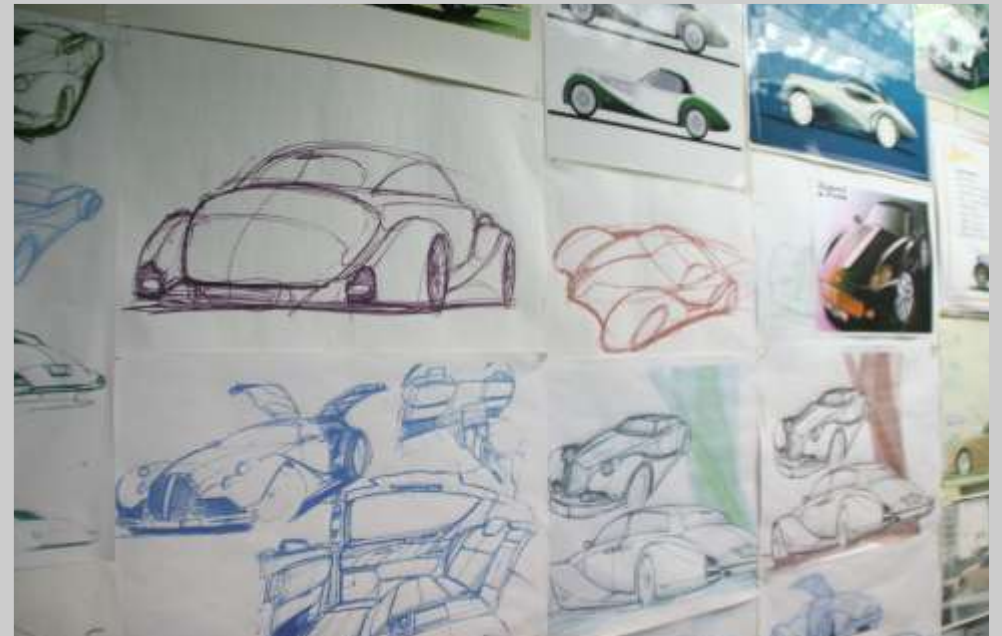
For the domestic market (West-Malaysia), BUFORI offers 2 years of free service (excluding fluids).

BUFORI motor cars are shipped all over the world. If required, our homologation department will be taking care of the type registration for the La Joya, should it be the first unit entering your home market.

Our aim is simple: make your BUFORI ownership as **enjoyable** as it could possibly be.

Opposite page: BUFORI electronic diagnostic system and tool kit under the bonnet.





# EXPERIENCED AND PASSIONATE

The BUFORI adventure started in 1986 in Sydney, Australia, when Gerry Khouri, the younger brother of Anthony and George, realised his dream of building a car on his own. The first BUFORI, which embodied the elements of class, elegance and fun, was completed in Gerry's own garage in late 1986.

Seeing the beautiful result and the immense public attention this car immediately attracted, the Khouri family decided to provide the necessary funds and infrastructure for Gerry to launch the BUFORI Motor Car Co. Production started in 1987 and all units were handcrafted to **meet the stringent Australian Design Rules (ADR's)**. The result of this compliance was that **BUFORI cars were able to receive** immediate acceptance in nearly every country into which they were exported and for seven consecutive years, BUFORI was the only company producing **vehicles in Australia being licensed by the Advance Australia Council to carry the "Australian Made" logo.**

**In the mid 1990's, BUFORI relocated to Malaysia upon personal invitation of the Prime Minister YM Tun Dr. Mahathir Mohamed**, where the company is still operating today. Housed under one roof, the Malaysian headquarters include a showroom, sales and distribution, production as well as research and development facilities.

From 1986 until today, BUFORI has continuously developed new models, which benefited from previous experience and the latest available technology.

Another aspect of the BUFORI heritage is our growing participation in **motor sport events**. From the very beginning, BUFORI's were designed as luxury sports cars and proved their abilities at several races. Be it the **Australian Cannonball run** or the **Malaysian Merdeka Millennium Endurance race**, where the BUFORI MKII was the only car able to drive home by itself after the 24 hour challenge.

**BUFORI is passion-driven and our family of BUFORI owners can't help but share in this.**

**Opposite page, clockwise:** The three Khouri brothers (Gerry, Anthony and George) posing with a MKI Roadster, BUFORI design studies, a BUFORI participating at the Australian Cannonball run, a BUFORI MKII Roadster.

# CURIOUS?

Would you like to discover more about the exclusive world of BUFORI motorcars? Are you interested in purchasing a handcrafted La Joya? Would you like to visit the factory and experience first-hand how a BUFORI is built?

Then please do not hesitate to approach us. You can find your nearest BUFORI dealer and many more interesting facts on [www.bufori.com](http://www.bufori.com)

You can also contact us directly via mail, e-mail and telephone at:

The BUFORI Motor Car Company (M) Sdn Bhd

34B, Jalan 5/32A, 6 1/2 Mile Kepong

52000 Kuala Lumpur,

Malaysia.

Telephone +603-6259-1000

Facsimile +603-6259-2000

[www.bufori.com](http://www.bufori.com)

[sales@bufori.com.my](mailto:sales@bufori.com.my)

Opposite page: A BUFORI La Joya on the Sepang International race circuit in Malaysia.







## STATEMENT OF PRIDE

The BUFORI Motor Car Company (M) Sdn Bhd (Co. # 440714-U)  
34B, Jalan 5/32A, 6 1/2 Mile Kepong, 52000 Kuala Lumpur, Malaysia.  
Telephone +603-6259-1000, Facsimile +603-6259-2000 [www.bufori.com](http://www.bufori.com)

IMPORTANT NOTICE: The Bufori Motor Car Company (M) Sdn Bhd is constantly seeking ways to improve the specification, design and production of its vehicles and alterations take place continually. Whilst every effort is made to produce up to date literature, this brochure should not be regarded as an infallible guide to current specifications, nor does it constitute an offer for sale of any particular vehicle.

Text and photographs may relate to models not available for sale in some countries. Performance results may vary depending on the specifications of the particular vehicle, road and environmental conditions and driving style. Published figures should be used for comparison purpose only and should not be attempted on public roads. The Bufori Motor Car Company (M) Sdn Bhd strongly advises that all speed laws must be obeyed and the safety belts worn at all time. Distributors or Dealers are not agents of The Bufori Motor Car Company (M) Sdn Bhd and have absolutely no authority to bind The Bufori Motor Car Company (M) Sdn Bhd by any express or implied undertaking or representation.

No part of this document is to be reproduced or transmitted in any form or by any means, electronic or mechanical, for any purposes, without the express written permission of The Bufori Motor Car Company (M) Sdn Bhd.

Drive Responsibly.  
Bufori 2014© v2