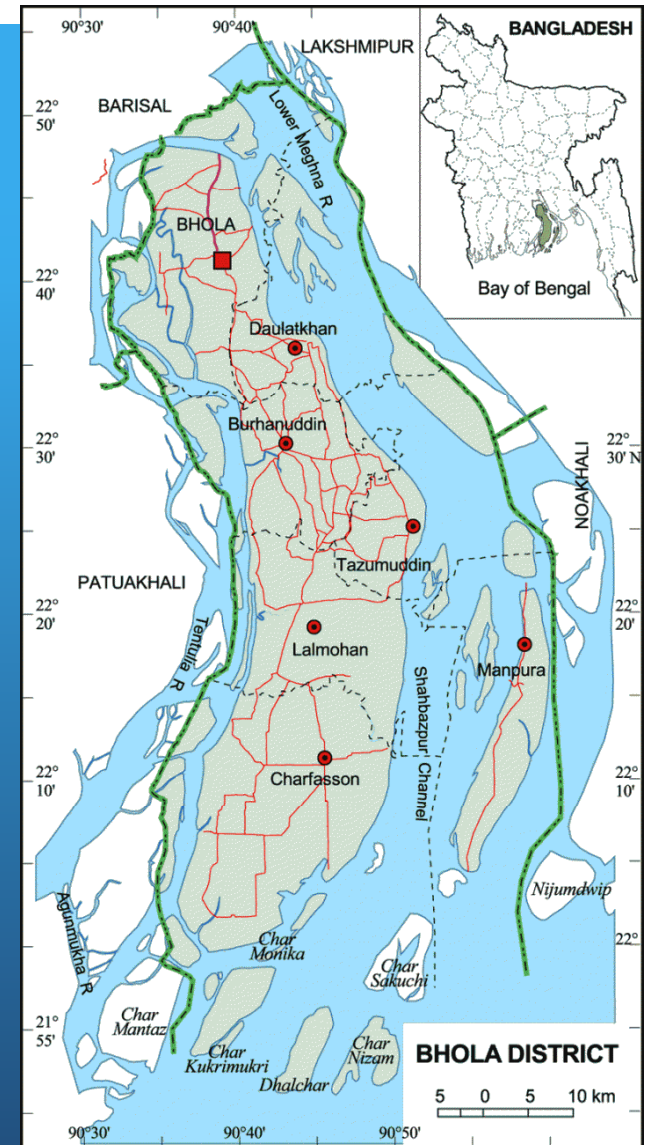


# Bhola Island, Bangladesh

Risks of erosion and disasters on livelihood



Mizanur Rahman, Co-Team Leader, Bhola Region, COAST Trust



# COAST at a glance



- COAST( [www.coastbd.org](http://www.coastbd.org)), by the merit of the name, works in the coastal area of Bangladesh.
- COAST, as an organization, was initiated in Bhola, the largest island in the coastline of Bangladesh. COAST works in 7 coastal districts in the country.
- To serve the poor and disadvantaged people of coastal area of Bangladesh is our mission.
- COAST is certified member of HAP International



# COAST Programs

- Micro Finance
- Institution Building
- Development Education
- Good Governance
- Coastal Integrated Technology Extension Program
- Primary health care
- Disaster Management
- Value Chain
- Advocacy for climate migrant
- Social Justice
- Education
- Local governance
- Communication for Development
- Justice for Safety &
- Scholl feeding





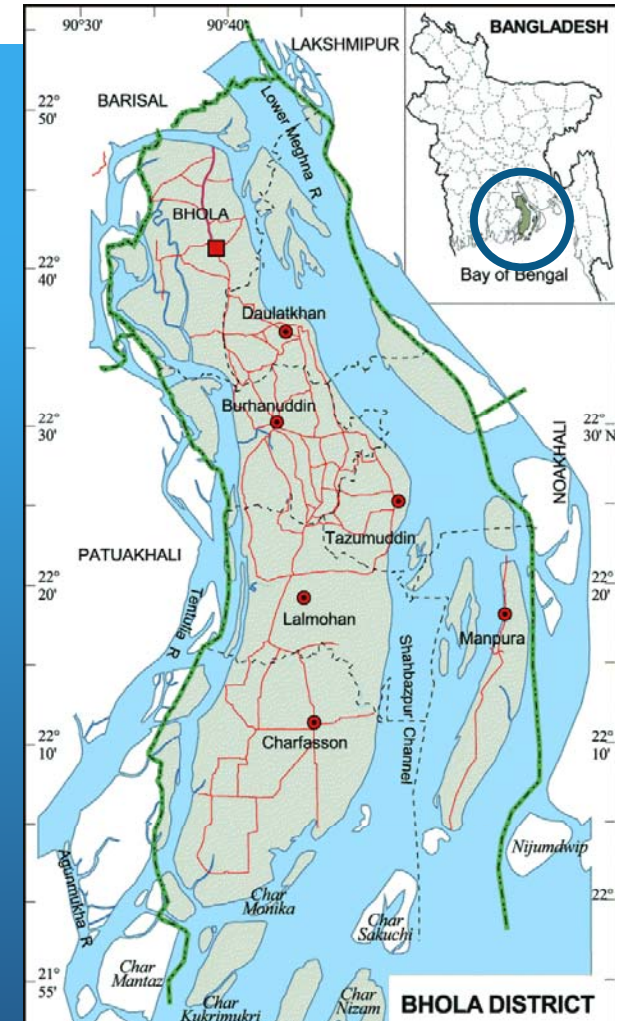
# Area Coverage

Total Branch Office	60
Total Upazila	28
Total Union	128
Total member (including all program)	1449618
Total staff ( Female-570, Male-855)	1425



# Bhola, at a glance

- Bhola is the largest island in Bangladesh
- The area of Bhola is 3403.48 sq.km.
- Emerged in the estuary of Meghna 800 years ago, by the sediment bore by Ganges and Brahmaputra river system.
- Agriculture was introduced in the 13<sup>th</sup> century.
- The altitude of the island is only 12 feet from the sea level.
- This island is NOT connected with the mainland by road communication. Waterways are the only way of transportation.



# Features of Bhola

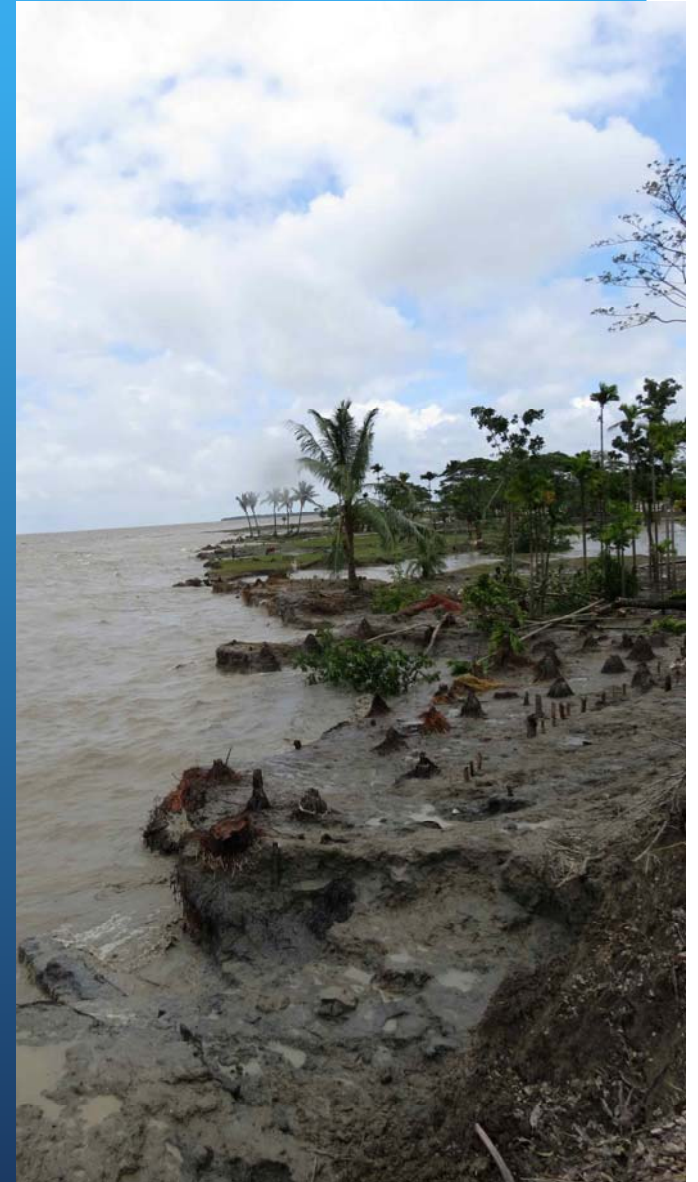
- Bhola district is under Barisal Division consisting
  - 7 Sub-Districts.
  - 5 municipalities.
  - 68 union &
  - 438 villages.
- Population is 1.8 million with the density of 522/sqkm.
- Fishing (60%), agriculture(30%) and other (10%) are the main occupation
- Only 263 cyclone shelters. insufficient for the huge population.
- Total land for agriculture 159 thousand hectors.
- Main crops are: Rice, Cucumber, Water melon, Potato, Peanut, Chili, Coconut, Betel leaf, Betel nut and different vegetables.





# Major risks

- River erosion is the burning issue in Bhola coastline.
- Bhola and adjacent area are one of the most disaster prone area in the world. Mostly hit by the big cyclones & tidal surge.
- This is why the islands in the Bay of Bengal are called the Climate Ground Zero.
- The unsecured embankment is a living threat to the crops and farming production.



# Great disasters in last 40 years only in Bhola

	1970 13 November	1991 29 April	SIDR 2007 15 November	Aila 2009 27 May	Mohasen 2013 17 May
Death toll	500,000	55	44	18	2
Tidal surge	15 feet	5-7 feet	8-10 feet	7 feet	5 feet
Loss of crop	Totally ruined	850 hectars	34784 hectars	107 hectars	400 hectars

Data sources from Disaster office, Media, Local people, Fisherman



# Flood in 2013

- Unusual tide appeared in July 2013 and flooded all over Bhola.
- 15 km of the embankment eroded to the river
- 500,000 people were imprisoned in the water logging for 4 months
- In Burhanuddin alone 12,358 hectares of land kept under water and expected crops valued US\$9.3m are ruined



# Recommendations

- Erosion along the Meghna river line of 120 km should urgently be addressed
- 230 km of embankment should be repaired
- More and sufficient cyclone shelters should be built to save more lives during cyclones and tidal surge
- Facilities should be built to save the livestock from disaster



# How COAST works on the ground

- Organize public events including human chain, meetings, press conference etc to bring the issues forefront
- Advocacy
- Awareness among the stakeholders, relief works during disasters
- Influence local political leaders to work on river erosion





A close-up photograph of a dandelion seed head. The seed head is large and fluffy, with many white, feathery seeds. Several seeds are shown floating away from the head, scattered across the upper left and middle sections of the image. The background is a solid, vibrant blue. The text "Thank you" is written in white in the bottom left corner.

Thank you