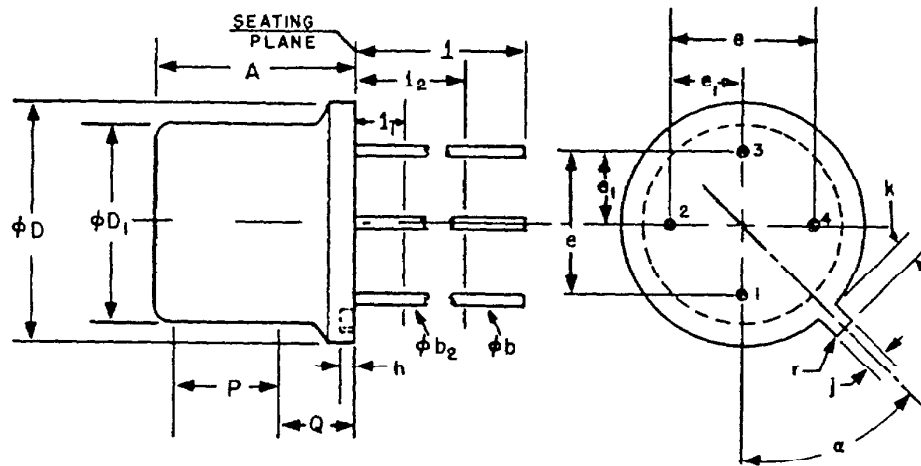


TO-12



4.6.6

SYMBOL	INCHES		MILLIMETERS		NOTES
	MIN.	MAX.	MIN.	MAX.	
A	.240	.260	6.10	6.60	
ϕb	.016	.021	.406	.533	2
ϕb_2	.016	.019	.406	.483	2
ϕD	.335	.370	8.51	9.40	
ϕD_1	.305	.335	7.75	8.51	
e	.200 T.P.		5.08 T.P.		4, 5
e ₁	.100 T.P.		2.54 T.P.		5
h	.009	.125	.229	3.18	
j	.028	.034	.711	.864	5
k	.029	.045	.737	1.14	3, 5
l	.300		12.70		2
l ₁		.050		1.27	2
l ₂	.250		6.35		2
P	.100		2.54		1
Q					6
r		.007		.178	
a	45° T.P.				5, 7

NOTES:

1. THIS ZONE IS UNCONTROLLED FOR AUTOMATIC HANDLING. THE VARIATION IN ACTUAL DIAMETER WITHIN THIS ZONE SHALL NOT EXCEED .010" (.254 MM).
2. (FOUR LEADS) ϕb_2 APPLIES BETWEEN l₁ AND l₂. ϕb APPLIES BETWEEN l₂ AND .5" (12.70 MM) FROM SEATING PLANE. DIAMETER IS UNCONTROLLED IN l₁ AND BEYOND .5" (12.70 MM) FROM SEATING PLANE.
3. MEASURED FROM MAXIMUM DIAMETER OF THE ACTUAL DEVICE.
4. LEADS HAVING MAXIMUM DIAMETER .019" (.483 MM) MEASURED IN A GAGING PLANE .054" (1.37 MM) + .001" (.025 MM) - .000" (.000 MM) BELOW THE SEATING PLANE OF THE DEVICE SHALL BE WITHIN .007" (.178 MM) OF THEIR TRUE POSITIONS RELATIVE TO THE MAXIMUM-WIDTH TAB.
5. THE DEVICE MAY BE MEASURED BY DIRECT METHODS OR BY THE GAGE AND GAGING PROCEDURE DESCRIBED ON GAGE DRAWING GS-1.
6. DETAILS OF OUTLINE IN THIS ZONE OPTIONAL.
7. TAB CENTERLINE.