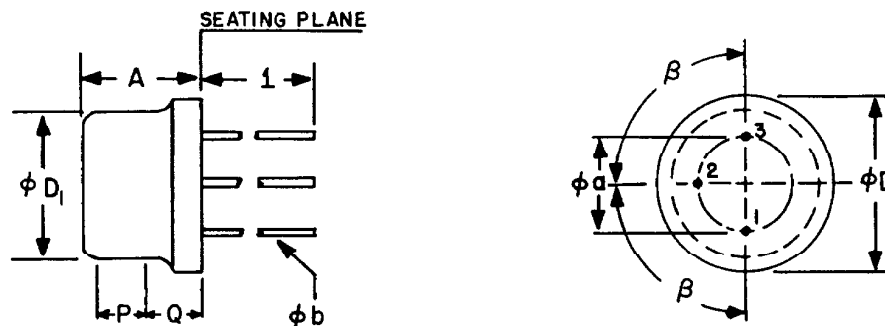


TO-16



SYMBOL	INCHES		MILLIMETERS		NOTES
	MIN.	MAX.	MIN.	MAX.	
ϕa	.190	.210	4.83	5.33	
A	.200	.260	5.08	6.60	
ϕb	.016	.019	.406	.483	2
ϕD	.370 NOMINAL		9.40 NOMINAL		
ϕD_1	.275	.335	6.99	8.51	
1	.500		12.70		
P	.100		2.54		1
Q					3
β	90° NOMINAL				

NOTES:

1. THIS ZONE IS CONTROLLED FOR AUTOMATIC HANDLING. THE VARIATION IN ACTUAL DIAMETER WITHIN THIS ZONE SHALL NOT EXCEED .010" (.254 MM).
2. THE SPECIFIED LEAD DIAMETER APPLIES IN THE ZONE BETWEEN .050" (1.27 MM) AND .250" (6.35 MM) FROM THE SEATING PLANE BETWEEN .250" (6.35 MM) AND .500" (12.70 MM) MAXIMUM OF .021" (.533 MM) DIAMETER IS HELD. OUTSIDE OF THESE ZONES THE LEAD DIAMETER IS NOT CONTROLLED.
3. DETAILS OF OUTLINE IN THIS ZONE OPTIONAL.

THIS OUTLINE DOES NOT MEET THE MINIMUM CRITERIA ESTABLISHED BY JS-10 FOR REGISTRATION.