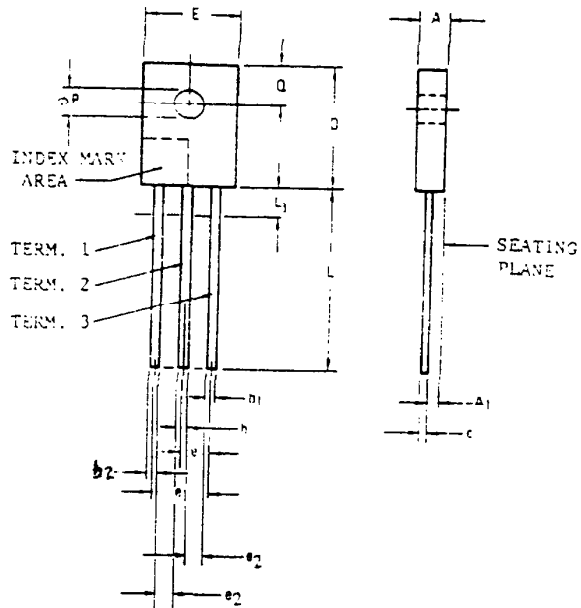


NOTES

1. REFER TO APPLICABLE SYMBOL LIST
2. LEAD DIMENSIONS NOT CONTROLLED IN THIS EDGE TO ALLOW FOR BODY FLASH AND LEAD FINISH BUILD-UP.
3. MAXIMUM RADIUS OF 1.27 mm ON ALL BODY EDGES AND CORNERS.
4. LEAD SPACING TO BE MEASURED BETWEEN 3.18 mm AND 3.81 mm FROM THE POINT OF EMERGENCE FROM THE BODY.
5. DIMENSIONING AND TOLERANCING PER ANS. Z39.5-1973.
6. e₂ CONTROLLED AT EGRESS OF PACKAGE.
7. CONTROLLING DIMENSION: INCH

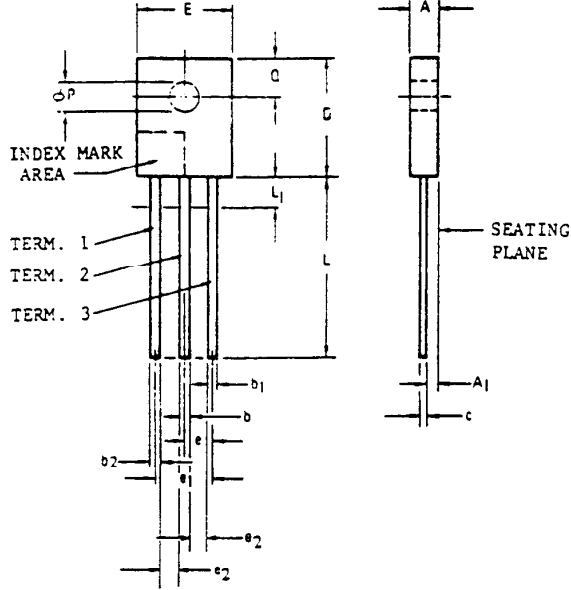


VARIATIONS (ALL DIMENSIONS SHOWN IN MILLIMETERS)

SYMBOL	AA		NOTE	AB		NOTE	MIN.	MAX.	NOTE	MIN.	MAX.	NOTE		
	MIN.	MAX.		MIN.	MAX.								MIN.	MAX.
	A	2.29		3.04									3.05	3.81
A ₁	.89	1.65		.89	1.65									
b ₁	.51	.66		1.05	1.29									
b	.63	.89		1.05	1.29									
b ₂	.51	.66		1.05	1.29									
c	.39	.63		.69	.93									
D	10.16	11.43		15.70	16.96									
E	7.12	8.38		12.20	13.46									
e	2.04	2.54	4	3.84	4.59	4								
e ₁	4.07	5.08	4	7.68	9.19	4								
e ₂	1.02	-	6	2.03	-	6								
L	14.48	16.63		15.12	16.63									
L ₁	-	2.54	2	-	3.17	2								
φP	2.54	3.30		3.18	3.93									
Q	3.31	4.44		4.58	5.71									
NOTE	1,3,5,7			1,3,5,7										
REF.	TO-126			TO-127										
ISSUE	C			A SEPT 76										
JEDEC SOLID STATE PRODUCT OUTLINES				TITLE FLAT MOUNTED FAMILY (PERIPHERAL TERMINALS)				ISSUE C		DATE Nov. 86				
								TO-225		VARIATION AA THRU AB				

NOTES :

1. REFER TO APPLICABLE SYMBOL LIST.
2. LEAD DIMENSIONS NOT CONTROLLED IN THIS ZONE TO ALLOW FOR BODY FLASH AND LEAD FINISH BUILD-UP.
3. MAXIMUM RADIUS OF .050 ON ALL BODY EDGES AND CORNERS.
4. LEAD SPACING TO BE MEASURED BETWEEN .125 AND .150 FROM THE POINT OF EMERGENCE FROM THE BODY.
5. DIMENSIONING AND TOLERANCING PER ANSI Y14.5-1973.
6. e_2 CONTROLLED AT EGRESS OF PACKAGE.
7. CONTROLLING DIMENSION: INCH.



VARIATIONS (ALL DIMENSIONS SHOWN IN INCHES)

SYMBOL	AA		NOTE	AB		NOTE	MIN.	MAX.	NOTE	MIN.	MAX.	NOTE	
	MIN.	MAX.		MIN.	MAX.								
A	.090	.120		.120	.150								
A ₁	.035	.065		.035	.065								
b ₁	.020	.026		.041	.051								
b	.025	.035		.041	.051								
b ₂	.020	.026		.041	.051								
c	.015	.025		.027	.037								
D	.400	.450		.618	.668								
E	.280	.330		.480	.530								
e	.080	.100	4	.151	.181	4							
e ₁	.160	.200	4	.302	.362	4							
e ₂	.040	-	6	.080	-	6							
L	.570	.655		.595	.655								
L ₁	-	.100	2	-	.125	2							
phi P	.100	.130		.125	.155								
Q	.130	.175		.180	.225								
NOTE	1,3,5,7			1,3,5,7									
REF.	TO-126			TO-127									
ISSUE	C			A SEPT 76									
JEDEC SOLID STATE PRODUCT OUTLINES				TITLE FLAT MOUNTED FAMILY (PERIPHERAL TERMINALS)				ISSUE C	DATE Nov. 86	TO-225 VARIATION AA THRU AB			