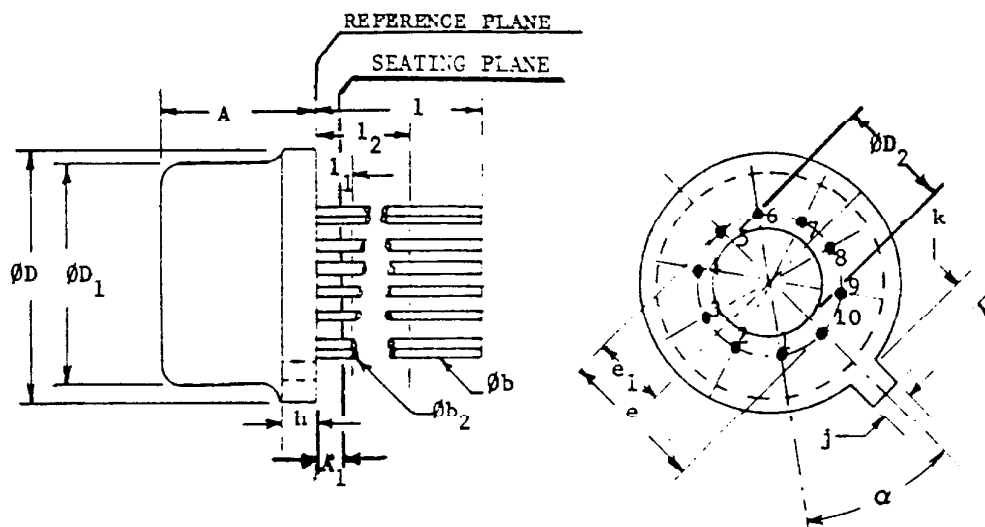


# TO-100



SYMBOL	INCHES		MILLIMETERS		NOTES
	MIN.	MAX.	MIN.	MAX.	
A	.165	.185	4.19	4.70	
A <sub>1</sub>	.010	.040	.254	1.02	
Øb	.016	.021	.406	.533	2
Øb <sub>2</sub>	.016	.019	.406	.483	2
ØD	.335	.370	8.51	9.40	
ØD <sub>1</sub>	.305	.335	7.75	8.51	
ØD <sub>2</sub>	.140	.160	3.56	4.06	
e <sup>2</sup>	.230 T.P.		5.84	T.P.	4
e <sub>1</sub>	.115 T.P.		2.92	T.P.	4
h <sub>1</sub>		.040		1.02	
j	.028	.034	.711	.864	
k	.029	.045	.737	1.14	3
l	.500		12.70		2
l <sub>1</sub>		.050		1.27	2
l <sub>2</sub>	.250		6.35		2
α <sup>2</sup>	36° T.P.		36°	T.P.	4,6

**NOTES:**

1. (TEN LEADS). MAXIMUM NUMBER OF LEADS OMITTED IN THIS OUTLINE, "ONE" (1). THE NUMBER AND POSITION OF LEADS ACTUALLY PRESENT ARE INDICATED IN THE PRODUCT REGISTRATION. OUTLINE DESIGNATION DETERMINED BY THE LOCATION AND MINIMUM ANGULAR SPACING OF ANY TWO ADJACENT LEADS.
2. (ALL LEADS) Øb<sub>2</sub> APPLIES BETWEEN l<sub>1</sub> AND l<sub>2</sub>. Øb APPLIES BETWEEN l<sub>2</sub> AND .500" (1270 MM) FROM REFERENCE PLANE. DIAMETER IS UNCONTROLLED IN l<sub>1</sub> AND BEYOND .500" (12.70 MM) FROM REFERENCE PLANE.
3. MEASURED FROM MAXIMUM DIAMETER OF THE PRODUCT.
4. LEADS HAVING MAXIMUM DIAMETER .019" (.483 MM) MEASURED IN GAGING PLANE .054" (1.37 MM) + .001" (.025 MM) - .000" (.000 MM) BELOW THE REFERENCE PLANE OF THE PRODUCT SHALL BE WITHIN .007" (.178 MM) OF THEIR TRUE POSITION RELATIVE TO A MAXIMUM WIDTH TAB.
5. THE PRODUCT MAY BE MEASURED BY DIRECT METHODS OR BY GAGE.
6. TAB CENTERLINE.