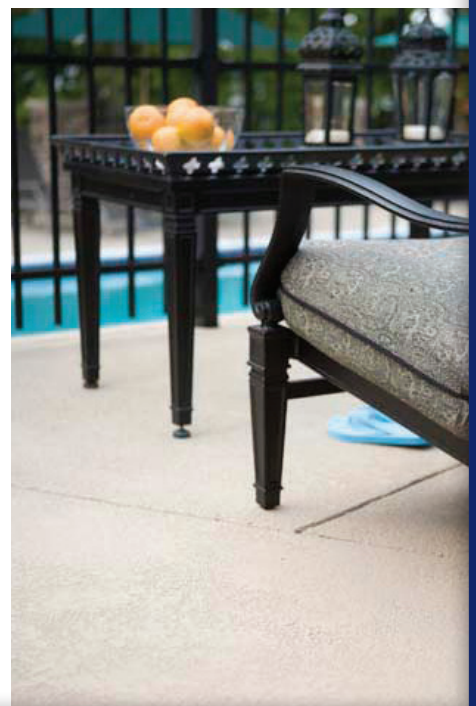


Imagine. Inspire. **CREATE.**

Use this section as a resource to show your customers decorative concrete possibilities.





Stamped Concrete

Stamped concrete is a customized product that can be tailored to suit your individual design goals and budget. Whether you want to achieve a natural look or create a unique and innovative design, the versatility of stamped concrete will ensure the beautiful end result you're envisioning.

By imprinting patterns in freshly placed concrete, you can achieve the high-end look of natural stone or brick — and often at a lower cost!

Achieve a Natural Stone Look: Sherwin-Williams has the solutions to help you closely replicate both the color and texture of popular paving materials such as cobblestone, brick, fieldstone, slate and other natural stone looks.

Lower Cost: Natural stone looks are costly and require more upkeep than patterned or stamped concrete, making stamped concrete the more economical choice. There's no need to sacrifice beauty for budget when using a stamped concrete product!

Easier and More Durable: Stamped concrete surpasses the traditional natural favorites in many ways, offering greater versatility, long-term performance and ease of installation.

Unique Design: Unlike masonry pavers or natural stone, concrete offers myriad options for customization because it can be shaped, imprinted, textured and colored to achieve almost any look imaginable.

Customize to Match Surroundings: Stamped concrete can blend harmoniously with just about any landscape and architectural scheme, making it suitable for all types of exterior hardscaping — and some interior applications as well.

Here are just a few of the beautiful looks created with Sherwin-Williams stamped concrete products:

Ideal for use on exterior:

- Patios
- Lanais
- Building Entrances
- Porticos
- Pool Decks
- Walkways
- Driveways in Residential Homes
- Multi-Family & Hospitality Environments



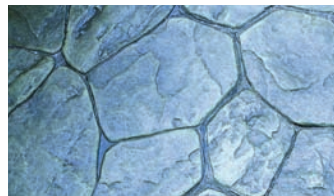
STYLE: European Fan Cobblestone
PRODUCT USED: H&C Dry Shake Color Hardener
 H&C Dry Shake Color Release
 H&C Concrete Sealer Clear Gloss Oil
COLORS FEATURED: Alabaster (Color Hardener)
 Maple (Color Release)



STYLE: Old World Cobblestone
PRODUCT USED: H&C Dry Shake Color Hardener
 H&C Dry Shake Color Release
 H&C Low VOC Concrete Sealer Clear Gloss Oil
COLORS FEATURED: Tweed (Color Hardener)
 Bold Bark (Color Release)



STYLE: Old Granite Cleft
PRODUCT USED: H&C Dry Shake Color Hardener
 H&C Dry Shake Color Release
 H&C Decorative Concrete Sealer
COLORS FEATURED: Brushed Steel (Color Hardener)
 Pepper Black (Color Release)



STYLE: Random Stone
PRODUCT USED: H&C Dry Shake Color Hardener
 H&C Dry Shake Color Release
 H&C Low VOC Concrete Sealer Solid Color Clear
COLORS FEATURED: Fawn (Color Hardener)
 Coffee Bean (Color Release)



STYLE: London Cobble Stone
PRODUCT USED: H&C Dry Shake Color Hardener
 H&C Dry Shake Color Release
 H&C Low VOC Concrete Sealer Solid Color Clear
COLORS FEATURED: Sandstone (Color Hardener)
 Solitude (Color Release)



STYLE: Herringbone Brick
PRODUCT USED: H&C Dry Shake Color Hardener
 H&C Dry Shake Color Release
 H&C Concrete Sealer Wet Look Water-based
COLORS FEATURED: Sandstone (Color Hardener)
 Copper Penny (Color Release)



STYLE: Old Spanish Tile
PRODUCT USED: H&C Dry Shake Color Hardener
 H&C Dry Shake Color Release
 H&C Decorative Concrete Sealer
COLORS FEATURED: Fawn (Color Hardener)
 Maple (Color Release)



STYLE: Granite Sets
PRODUCT USED: H&C Dry Shake Color Hardener
 H&C Dry Shake Color Release
 H&C Low VOC Concrete Sealer Clear Gloss Oil
COLORS FEATURED: Fawn (Color Hardener)
 Black Walnut (Color Release)



STYLE: Ashlar Cut Stone
PRODUCT USED: H&C Dry Shake Color Hardener
 H&C Dry Shake Color Release
 H&C Concrete Sealer Clear Gloss Oil
COLORS FEATURED: Brushed Steel (Color Hardener)
 Solitude (Color Release)



STYLE: Ashlar Cut Stone
PRODUCT USED: H&C Dry Shake Color Hardener
 H&C Dry Shake Color Release
 H&C Decorative Concrete Sealer
COLORS FEATURED: Maple (Color Hardener)
 Bold Bark (Color Release)



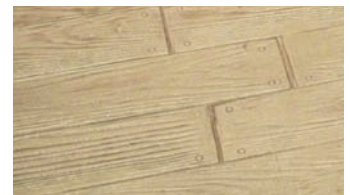
STYLE: Random Stone
PRODUCT USED: H&C Dry Shake Color Hardener
 H&C Dry Shake Color Release
 H&C Decorative Concrete Sealer
COLORS FEATURED: Tweed (Color Hardener)
 Copper Penny (Color Release)



STYLE: New England Slate
PRODUCT USED: H&C Dry Shake Color Hardener
 H&C Dry Shake Color Release
 H&C Decorative Concrete Sealer
COLORS FEATURED: Brushed Steel (Color Hardener)
 Black Walnut (Color Release)



STYLE: Italian Slate Seamless Texture Skin with Texture Border
PRODUCT USED: H&C Dry Shake Color Hardener
 H&C Dry Shake Color Release
 H&C Low VOC Concrete Sealer Clear Gloss Oil
COLORS FEATURED: Brushed Steel (Color Hardener)
 Solitude (Color Release)



STYLE: Wood Plank Stamp
PRODUCT USED: H&C Dry Shake Color Hardener
 H&C Dry Shake Color Release
COLORS FEATURED: Tweed (Color Hardener)
 Fawn (Color Release)



Stencils

Stencils offer an unlimited choice of decorative and artistic motifs that can personalize or enhance practically any hardscape decor. They can range from the basics of stone, brick and tile to more ornate works such as stars, crests, monograms and symbols. The designs can be replicated for repeated use or to create a unique, one-of-a-kind accent incorporated into the project.

Stencils can be an eye-catching option that delivers more flexibility than stamped concrete designs. They are ideal for decorative applicators just getting started because they are economical and easy to use.

Versatility: Stencils can be purchased and created, allowing new installers to achieve a variety of artistic designs without having to be an artist. They can also be added at different times and are not dependent on the age of the concrete.

Affordability: Stencil medium can be reproduced from popular pictures or symbols, reducing the work time spent cutting and grinding the concrete. The patterns are very realistic, while reducing labor costs.

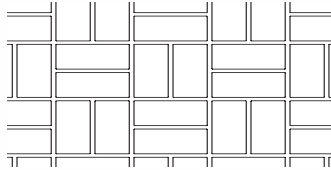
Topical: Since they are placed on the surface of the concrete, their installations are not as affected by concrete quality, flatness and aggregate type. They can help a surface appear more flat.

Distinctive: Stencil patterns are often the most unique and ornate projects. They can differentiate the applicator and consumer with custom applications that are difficult to achieve in other decorative hardscapes.

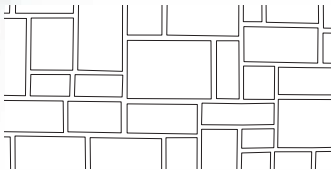
Here are just a few of the beautiful looks created with Sherwin-Williams Stencils:

Ideal for use on exterior:

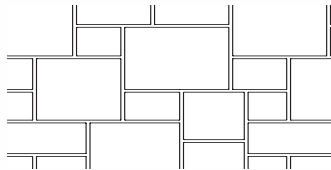
- Patios
- Lanais
- Building Entrances
- Porticos
- Pool Decks
- Walkways
- Driveways in Residential Homes
- Multi-Family & Hospitality Environments



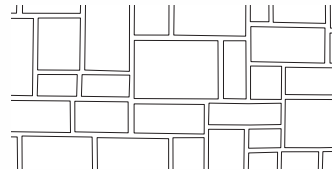
STYLE: Basket Weave
PRODUCT USED: H&C Solid Color WB Stain (Base)
 H&C Solid Color WB Stain (Top)
COLORS FEATURED: HC 136 Aztec Sand (Base)
 HC 133 Bombay (Top)



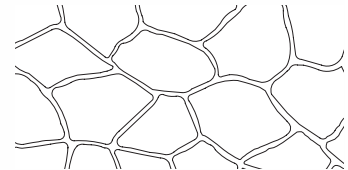
STYLE: Ashlar Cut Stone
PRODUCT USED: H&C Dry Shake Color Hardener
 H&C Dry Shake Color Release
 H&C Concrete Sealer Clear Gloss Oil
COLORS FEATURED: Tweed (Color Hardener)
 Solitude (Color Release)



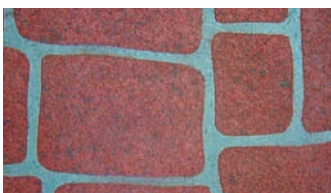
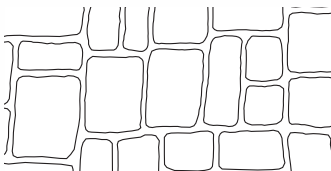
STYLE: Silverdale
PRODUCT USED: H&C Solid Color WB Stain (Base)
 H&C Solid Color WB Stain (Top)
 H&C Concrete Sealer Wet Look
 Water-Based
COLORS FEATURED: HC 125 Neutral Balance Tan (Base)
 HC 159 Terracotta Orange



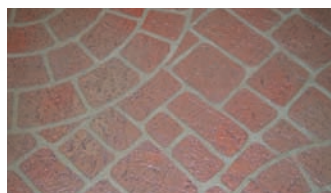
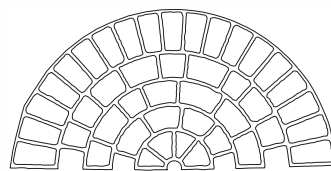
STYLE: Ashlar Cut Stone
PRODUCT USED: H&C Dry Shake Color Hardener
 H&C Dry Shake Color Release
 H&C Decorative Concrete Sealer
COLORS FEATURED: Natural Cork (Color Hardener)
 Pepper Black (Color Release)



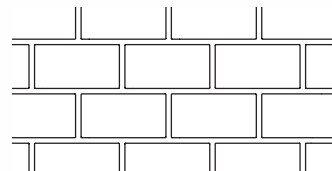
STYLE: Flagstone
PRODUCT USED: H&C Solid Color Sealer (Base)
 H&C Solid Color Sealer (Top)
COLORS FEATURED: HC 124 Silver Gray
 HC 132 Gull Gray



STYLE: Old English Cobblestone
PRODUCT USED: H&C Dry Shake Color Hardener
 H&C Dry Shake Color Release
 H&C Low VOC Concrete Sealer Clear
COLORS FEATURED: Brushed Steel (Color Hardener)
 Copper Penny (Color Release)



STYLE: Cobble Circle
PRODUCT USED: H&C Solid Color WB Stain (Base)
 H&C Solid Color WB Stain (Top)
 H&C Concrete Sealer Wet Look
 Water-Based
COLORS FEATURED: HC 165 Fresh Cement (Base)
 HC 102 Red Terrazzo Tile (Top)



STYLE: Running Bond with Border
PRODUCT USED: H&C Solid Color Sealer (Base)
 H&C Solid Color Sealer (Top)
COLORS FEATURED: HC 141 Cemented Deal (Base)
 HC 110 Tile Red (Top)



STYLE: Cobble Circle & Ashlar Cut Stone
PRODUCT USED: H&C Dry Shake Color Hardener
 H&C Dry Shake Color Release
 H&C Decorative Concrete Sealer
COLORS FEATURED: Cemented Deal (Color Hardener)
 Solitude (Color Release)



Polished (Exposed Aggregate)

Polished concrete is a trendy process that turns ordinary concrete into a beautiful, low-maintenance and highly reflective surface. This interior concrete finish is lasting and durable since the process makes the concrete harder. It can be used with acetone dyes and water-based stains, as well as stencils and engraving tools to create rich artistry.

Polished concrete requires a great deal of training and expertise. However, when properly performed, it transforms concrete into the look of brilliant and iridescent polished stone.

Functionality: Due to the hardened finish, polished concrete provides a shiny surface without being very slippery.

Performance: These floors have some of the longest and most durable in-service uses. They improve light reflective value and require no waxing — only a protective finish for years of low-maintenance service.

Cost-Effective: Installation can be less over time than other hardscape product systems.

Here are just a few of the beautiful looks created with Sherwin-Williams polished concrete products:

Ideal for use on interior floors in:

- Commercial Buildings
- Retail Stores & Restaurants
- Grocery Stores
- Warehouses
- Garages



STYLE: 200-Grit Honed Finish
PRODUCT USED: H&C Acetone Dye Stain
 H&C Clear Liquid Hardener & Densifier
 H&C Lithium Protective Finish
COLORS FEATURED: Desert Orange (Acetone Dye)
 Vegas Light (Acetone Dye)



STYLE: 400-Grit Highly Polished Finish
PRODUCT USED: H&C Clear Liquid Hardener & Densifier
 H&C Lithium Protective Finish
COLORS FEATURED: None
 Clear Finish



STYLE: 800-Grit Semi-Polished Finish
PRODUCT USED: H&C Clear Liquid Hardener & Densifier
 H&C Lithium Protective Finish
COLORS FEATURED: None
 Clear Finish



STYLE: 800-Grit Semi-Polished Finish
PRODUCT USED: H&C Acetone Dye Stain
 H&C Clear Liquid Hardener & Densifier
 H&C Lithium Protective Finish
COLORS FEATURED: Saddle Brown (Acetone Dye)
 Reno Gold (Acetone Dye)



STYLE: 1500-Grit Highly Polished Finish
PRODUCT USED: H&C Clear Liquid Hardener & Densifier
 H&C Lithium Protective Finish
COLORS FEATURED: Spanish Dagger (Acetone Dye)



STYLE: 3000-Grit Mirror Polished Finish
PRODUCT USED: H&C Acetone Dye Stain
 H&C Clear Liquid Hardener & Densifier
 H&C Lithium Protective Finish
COLORS FEATURED: Canyon (Acetone Dye)
 Salsa Red (Acetone Dye)



Textures

A variety of textured concrete patterns can be achieved with Concrete Resurfacers. Most aged concrete has imperfections in the form of cracks, discoloration, pop-outs, and other flaws. Concrete Resurfacers provide a cosmetic upgrade as an economical alternative to complete replacement — while giving the final appearance of new decorative concrete.

Use Concrete Resurfacers to create traditional texture patterns such as: Knockdown, Skip Trowel, Smooth Trowel, Spatter Coat, Broom Finish and more!

Lower Cost Alternative: Concrete Resurfacers are used to achieve textures on existing aged concrete substrates. They provide a textured decorative overlayment at a lower cost than concrete replacement.

Customized Designs: Unlike stamped concrete, textures can be manipulated to create unique designs to suit each project. The artist is in complete control of the final appearance with the ability to create any pattern imaginable.

Easier to Use: Concrete Resurfacer textured products are often easier to use than traditionally stamping fresh concrete or using a Stampable Overlay product. With an easier application process, textured Concrete Resurfacing projects can give you a similar look to stamped concrete.

Durable Substrate: Concrete Resurfacers are not only attractive, but provide a durable finish for interior and exterior surfaces. Resurfacers are low maintenance and are suitable for vehicular traffic, providing excellent adhesion and abrasion resistance.

Add Color: Color Packs provide instant color to all bagged Concrete Resurfacer products. A variety of solid color and decorative stains can also be used to beautify the textured substrate.

Here are just a few of the beautiful looks created with Sherwin-Williams texture products:

Ideal for use on exterior:

- Patios
- Lanais
- Building Entrances
- Porticos
- Pool Decks
- Walkways
- Driveways in Residential Homes
- Multi-Family & Hospitality Environments

KNOCK-DOWN



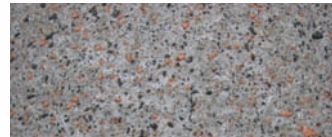
TEXTURE: Knockdown Heavy
PRODUCT USED: H&C Concrete Resurfacer – Instant Texture
 H&C Concrete Stain Solid Color Water-Based
COLORS FEATURED: Bombay HC133 (Stain)

SMOOTH



TEXTURE: Smooth Trowel
PRODUCT USED: H&C Concrete Resurfacer – Heavy Traffic
 H&C Concrete Resurfacer – Color Pack
 H&C Concrete Stain Solid Color Water-Based Clear
COLORS FEATURED: Tweed (Color Pack)

SPATTER COAT/ ORANGE PEEL (BUBBLE STIPPLE)

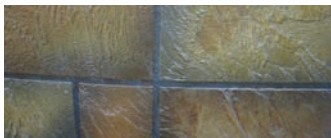


TEXTURE: Orange Peel Texture
PRODUCT USED: H&C Concrete Resurfacer - Color Pack (Base)
 H&C Concrete Resurfacer - Color Pack (Top)
 H&C Decorative Concrete Sealer
COLORS FEATURED: Pepper Black (Color Pack - Base)
 Natural Cork (Color Pack - Top)



TEXTURE: Stipple Texture
PRODUCT USED: H&C Concrete Resurfacer - Color Pack (Base)
 H&C Concrete Resurfacer - Color Pack (Top)
 H&C Concrete Sealer Wet Look Water-based
COLORS FEATURED: Coffee Bean (Color Pack - Base)
 Buckhead Brown (Color Pack - Top)

TROWELED



TEXTURE: Skip-Trowel Heavy
PRODUCT USED: H&C Concrete Resurfacer – Heavy Traffic
 H&C Concrete Resurfacer – Color Pack
 H&C Semi-Transparent Decorative Stain
 H&C Low VOC Concrete Sealer Clear Gloss Oil
COLORS FEATURED: Pepper Black (Color Pack)
 Honeycomb (Semi-Transparent Stain)
 Cordovan (Semi-Transparent Stain)
 Dewy Blade (Semi-Transparent Stain)



TEXTURE: Skip-Trowel Heavy
PRODUCT USED: H&C Concrete Resurfacer – Heavy Traffic
 H&C Concrete Resurfacer – Color Pack
 H&C Semi-Transparent Decorative Stain
 H&C Concrete Sealer Wet Look Water-based
COLORS FEATURED: Birch Bark (Color Pack)
 City Bronze (Semi-Transparent Stain)
 Silvered Stone (Semi-Transparent Stain)

STAMPED OVERLAY



TEXTURE: Random Stone
PRODUCT USED: H&C Stampable Overlay
 H&C Concrete Resurfacer – Color Pack
 H&C Liquid Release
 H&C Semi-Transparent Decorative Stain
 H&C Concrete Sealer Wet Look Water-based
COLORS FEATURED: Alabaster (Color Pack)
 Autumn Breeze (Semi-Transparent Stain)



TEXTURE: Old Granite Cleft
PRODUCT USED: H&C Stampable Overlay
 H&C Concrete Resurfacer – Color Pack
 H&C Liquid Release
 H&C Semi-Transparent Decorative Stain
 H&C Concrete Sealer Clear Gloss Oil
COLORS FEATURED: Fawn (Color Pack)
 Cocoa Bean (Semi-Transparent Stain)

BROOM FINISH



TEXTURE: Broom Finish
PRODUCT USED: H&C Broom Finish Repair
 H&C Concrete Stain Solid Color Water-Based
COLORS FEATURED: Cemented Deal HC141 (Stain)



TEXTURE: Broom Finish
PRODUCT USED: H&C Broom Finish Repair
 H&C Concrete Resurfacer – Color Pack
 H&C Low VOC Concrete Sealer Solid Color Clear
COLORS FEATURED: Gadget Gray (Color Pack)



Colored/Stained Concrete

Beautify your stamped or textured concrete with color! With a variety of solid color or variegated faux finishes, every project is unique. From warm, natural tones, to vibrant, bold colors, the possibilities are endless. Each decorative stain or dye achieves a distinct look, enhancing any hardscape.

Choose from Solid Color Stains and Sealers, Semi-Transparent Water-Based Stains, Acid Stains, and Acetone Dye Stains.

Beautify: The key to decorative concrete is color. Solid color stains and sealers or decorative stains and dyes can enhance existing concrete substrates, new concrete surfaces, concrete resurfacers and overlay projects.

Product Options: A variety of technologies can be used to add color to your decorative concrete project. Choose from the more complex Acid Stains to the user-friendly Semi-Transparent Water-Based stains.

Protection: All Decorative Stains and Dyes will need to be sealed with the appropriate sealer to complete your decorative concrete project. Refer to the clear sealer section for a variety of options. Solid Color Stains and Sealers are self sealing, eliminating the need for the additional clear coat for protection.

Here are just a few of the beautiful looks created with Sherwin-Williams decorative stains and dyes:

Ideal for use on interior floors in:

- Commercial Buildings
- Retail Stores & Restaurants
- Grocery Stores
- Warehouses
- Garages
- Residential Homes

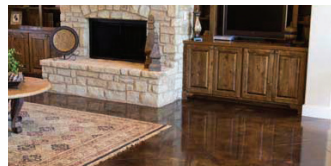
As well as exterior:

- Patios
- Lanais
- Building Entrances
- Porticos
- Pool Decks
- Walkways
- Driveways in Residential Homes
- Multi-Family & Hospitality Environments

ACID



PRODUCT USED: H&C Infusion Reactive Concrete Stain
H&C High Performance Industrial Clear Coat
COLORS FEATURED: Black Coffee (Reactive Stain)

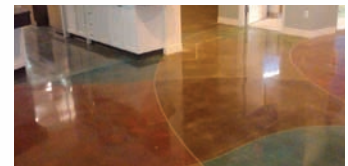


PRODUCT USED: H&C Infusion Reactive Concrete Stain
H&C Infusion Solvent-based Sealer
H&C Industrial Floor Finish
COLORS FEATURED: Rusted Fence (Reactive Stain)
Wengewood (Reactive Stain)

ACETONE DYE

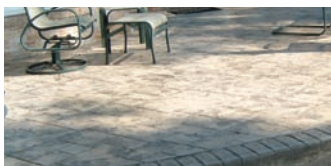


PRODUCT USED: H&C Acetone Dye Stain
H&C Low VOC Concrete Sealer Solid Color Clear
COLORS FEATURED: Vegas Light (Acetone Dye)



PRODUCT USED: H&C Acetone Dye Stain
H&C High Performance Industrial Clear Coat
H&C Industrial Floor Finish
COLORS FEATURED: Red Rock (Acetone Dye)
Prickly Cactus (Acetone Dye)
Cowboy Hat (Acetone Dye)

SEMI-TRANSPARENT



PRODUCT USED: H&C Semi-Transparent Decorative Stain
H&C Decorative Concrete Sealer
COLORS FEATURED: Cork (Semi-Transparent Stain)
Arctic Stone (Semi-Transparent Stain)



PRODUCT USED: H&C Semi-Transparent Decorative Stain
H&C High Performance Industrial Clear Coat
COLORS FEATURED: Cordovan (Semi-Transparent Stain)
Gold Leaf (Semi-Transparent Stain)
Autumn Breeze (Semi-Transparent Stain)
Dahlia Red (Semi-Transparent Stain)



PRODUCT USED: H&C Semi-Transparent Decorative Stain
H&C Concrete Stain Solid Color Water-Based Clear
COLORS FEATURED: Espresso (Semi-Transparent Stain) Edge
Henna (Semi-Transparent Stain)

SOLID COLOR STAINS & SEALERS



PRODUCT USED: H&C Concrete Sealer Solid Color
COLORS FEATURED: Tile Red HC110 (Sealer)



PRODUCT USED: H&C Concrete Stain Solid Color Water-Based
COLORS FEATURED: Bombay HC133 (Stain)



AVAILABLE COLORS

These colors are a representation. Actual color will vary due to the concrete profile quality and finishing method (how tight or porous the surface is), producing a mottled or distressed appearance.

THESE COLORS ARE AVAILABLE FOR:

- H&C® Concrete Sealer Solid Color Solvent-Based
- H&C® Low VOC Concrete Sealer Solid Color Solvent-Based
- H&C® Concrete Stain Solid Color Water-Based
- H&C® California Concrete Stain Solid Color Water-Based

				
Tile Red* HC110	Naturally Red HC126	Terra Cotta* HC167	Cedarwood Brown HC103	Red Terrazzo Tile HC102
				
Terracotta Orange HC159	White-Washed Terracotta HC135	Aztec Sand HC136	Neutral Balance Tan HC125	Silk Chocolate HC117
				
Sandstone* HC157	Bombay* HC133	Cemented Deal HC141	Siberian Haze HC149	Fresh Concrete HC165
				
Hint of Gray HC156	Muddy Gray HC172	Charred Walnut HC109	Gray Horizons HC140	Gull Gray* HC132
				
Pearl Gray* HC164	Silver Gray* HC124	Black* HC108	Extra-White* HC148	Fall Grass HC145
				
Patio Green* HC105	Bombay Breeze HC146	Drive-In Twilight HC155		

*May be available as a pre-mixed color.



H&C® SEMI-TRANSPARENT DECORATIVE STAINS

- Eco-friendly, water-based stains penetrate into the concrete for a faux layered look
- 16 trendy colors to mix and match
- Color reaches full potential almost immediately upon application
- Numerous colors and coats can be applied simultaneously
- Zero VOCs
- May be used on indoor and outdoor surfaces
- No acid or harmful chemicals
- No neutralization or chemical reaction needed
- Can be diluted up to 4:1 with water for color variation and increased coverage rates
- Clean-up is simple with just soap and water

AVAILABLE COLORS

These colors are a representation. Actual color will vary due to the concrete profile quality and finishing method (how tight or porous the surface is), producing a mottled or distressed appearance. Colors are on a gray concrete base and stain is diluted with water 1:1. Always test the color before application begins.



COLOR/SIZE	SALES NO.	PART NO.	UPC
Arctic Stone 1 Gal.	6501-28671	45.001004-16	035777580929
Tumbled Stone 1 Gal.	6501-28739	45.001034-16	035777581667
Obsidian 1 Gal.	6501-28747	45.001044-16	035777581704
Espresso 1 Gal.	6501-28846	45.001054-16	035777583319
Cocoa Bean 1 Gal.	6501-28853	45.001064-16	035777583326
Cordovan 1 Gal.	6501-28879	45.001074-16	035777583470
Henna 1 Gal.	6501-28895	45.001084-16	035777583890
Dahlia Red 1 Gal.	6501-28937	45.001104-16	035777583951
Cardinal Red 1 Gal.	6501-29026	45.001124-16	035777585313
Pumpkin Spice 1 Gal.	6501-29034	45.001134-16	035777585771
Autumn Breeze 1 Gal.	6501-29042	45.001144-16	035777586075
Gold Leaf 1 Gal.	6501-29075	45.001164-16	035777586501
Cork 1 Gal.	6501-29091	45.001174-16	035777586778
Dewy Blade 1 Gal.	6501-29125	45.001204-16	035777586945
Moss 1 Gal.	6501-29158	45.001234-16	035777586990
Marina Blue 1 Gal.	6501-29174	45.001254-16	035777587041
12 Colors Kit	6501-34588	45.003000-99	035777671665
28 Colors Kit	6501-72679	45.003100-99	035777854662



H&C® ACETONE DYE STAINS

- Perfect for polished concrete applications
- Achieve a layered, faux or single color look in a lot less time than acid stains
- 16 beautiful colors that are designed to be easy and ready to use
- The colors may be mixed to achieve even more colors
- These dye stains are vibrant and are the perfect accents to reactive stains
- Use on new or existing concrete
- Dries to touch in 20 – 40 minutes
- Zero VOCs
- No neutralization required
- Can be used with other decorative product systems
- Interior use only

AVAILABLE COLORS

Additional colors can be achieved by mixing the colors below. These colors are a representation. Actual color will vary due to the concrete profile quality and finishing method (how tight or porous the surface is), producing a mottled or distressed appearance. Always test the color before application begins.



Spanish Dagger



Reno Gold



Saddle Brown



Prickly Cactus



Salsa Red



Oasis



Canyon



Tortoise Shell



Ranch Hand Brown



Cowboy Hat



Vegas Light



Adobe Red



Red Rock



Stagecoach Brown



Desert Orange



Rattler's Brown

COLOR	SALES NO.	PART NO.	UPC
Spanish Dagger	6501-81944	41.005001-99	035777001929
Reno Gold	6501-81951	41.005002-99	035777001936
Saddle Brown	6501-81969	41.005003-99	035777001943
Prickly Cactus	6501-81977	41.005004-99	035777001950
Salsa Red	6501-81985	41.005005-99	035777001967
Oasis	6501-81993	41.005006-99	035777001974
Canyon	6501-82009	41.005007-99	035777001981
Tortoise Shell	6501-82017	41.005008-99	035777001998
Ranch Hand Brown	6501-82025	41.005009-99	035777002001
Cowboy Hat	6501-82033	41.005010-99	035777002018
Vegas Light	6501-82041	41.005011-99	035777002025
Adobe Red	6501-82066	41.005013-99	035777002049
Red Rock	6501-82058	41.005012-99	035777002032
Stagecoach Brown	6501-82074	41.005014-99	035777002056
Desert Orange	6501-82082	41.005015-99	035777002063
Rattler's Brown	6501-82090	41.005016-99	035777002070

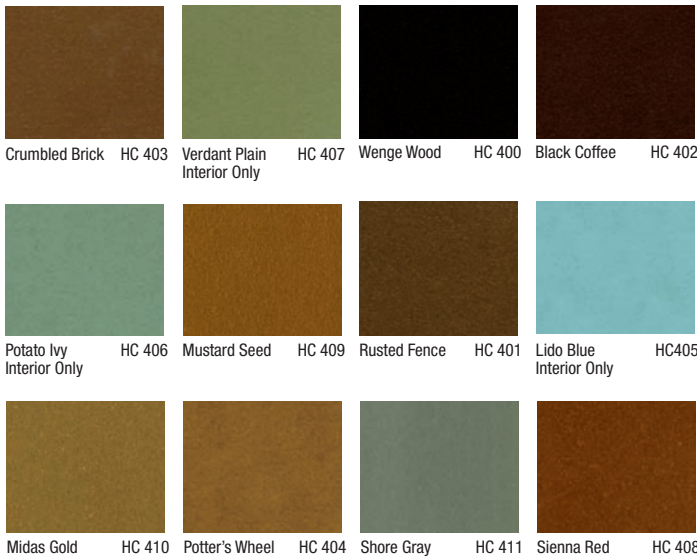


H&C® INFUSION™ REACTIVE ACID STAINS

- Provide a translucent, variegated appearance to bare, horizontal new or existing concrete
- Extremely vibrant colors, easy to mix and match for numerous colors
- Chemically reacts and becomes permanent part of concrete
- Requires neutralization
- Interior and exterior use
- 12 package colors
- Great for high traffic applications
- Professional use only

AVAILABLE COLORS

Additional colors can be achieved by inter-mixing the colors. These colors are a representation. Actual color will vary due to the concrete profile quality and finishing method (how tight or porous the surface is), producing a mottled or distressed appearance. Always test the color before application begins.



COLOR/SIZE	SALES NO.	PART NO.	UPC
Sienna Red 1 Gal.	6500-30323	40.002084-16	035777022405
Sienna Red 5 Gal.*	6500-32469	40.002085-20	035777036785
Mustard Seed 1 Gal.	6500-30331	40.002094-16	035777022580
Mustard Seed 5 Gal.*	6500-32485	40.002095-20	035777036792
Midas Gold 1 Gal.	6500-30307	40.002104-16	035777022603
Midas Gold 5 Gal.*	6500-32477	40.002105-20	035777036808
Shore Gray 1 Gal.	6500-30315	40.002114-16	035777022610
Shore Gray 5 Gal.*	6500-32451	40.002115-20	035777036815
Wenge Wood 1 Gal.	163-4724	40.002004-16	035777633335
Wenge Wood 5 Gal.*	163-4732	40.002005-20	035777633342
Rusted Fence 1 Gal.	163-4740	40.002014-16	035777633359
Rusted Fence 5 Gal.*	163-4757	40.002015-20	035777633366
Black Coffee 1 Gal.	163-4765	40.002024-16	035777633373
Black Coffee 5 Gal.*	163-4773	40.002025-20	035777633380
Crumbled Brick 1 Gal.	163-4781	40.002034-16	035777633397
Crumbled Brick 5 Gal.*	163-4799	40.002035-20	035777633403
Potter's Wheel 1 Gal.	163-4807	40.002044-16	035777633410
Potter's Wheel 5 Gal.*	163-4815	40.002045-20	035777633427
Lido Blue 1 Gal.	163-4823	40.002054-16	035777633434
Lido Blue 5 Gal.*	163-4831	40.002055-20	035777633441
Potato Ivy 1 Gal.	163-4849	40.002064-16	035777633458
Potato Ivy 5 Gal.*	163-4856	40.002065-20	035777633465
Verdant Plain 1 Gal.	163-4864	40.002074-16	035777633472
Verdant Plain 5 Gal.*	163-4872	40.002075-20	035777633489
Sample Kit	6500-86192	40.003000-99	035777049242

*Five gallon pails are special order items.



H&C® DRY SHAKE COLOR HARDENER

- Perfect for coloring and hardening new concrete flatwork applications
- Improves the strength and density of the concrete while adding rich, intense color options
- Improves abrasion resistance and produces a brilliant, streak-free surface
- Ideal for stamped concrete
- Exterior use only



Copper Penny Tweed Sandstone Fawn Alabaster



Cemented Deal Siberian Haze Natural Cork Maple Brushed Steel

COLOR	SALES NO.	PART NO.	UPC
Copper Penny	6502-90935	61.000007	035777055632
Tweed	6502-90927	61.000012	035777055625
Sandstone	6502-90968	61.000013	035777055663
Fawn	6502-90976	61.000015	035777055670
Alabaster	6502-90950	61.000017	035777055656
Cemented Deal	6502-90851	61.000018	035777055557
Siberian Haze	6502-90919	61.000019	035777055618
Natural Cork	6502-72875	61.000020	035777051153
Maple	6502-90984	61.000022	035777055687
Brushed Steel	6502-90943	61.000026	035777055649



H&C® DRY SHAKE COLOR RELEASE

- Used with H&C Dry-Shake Color Hardener for stamping newly or freshly placed concrete
- Releases stamping tools from concrete and provides a secondary accent color with its proprietary integrated pigments
- Designed to work with stamping tools to enhance the texture and provide an accent color in any hardscape



Copper Penny Sandstone Fawn Siberian Haze Maple



Bold Bark Black Walnut Coffee Bean Solitude Pepper Black

COLOR	SALES NO.	PART NO.	UPC
Copper Penny	6502-93277	62.000007	035777057209
Sandstone	6502-93319	62.000013	035777057247
Fawn	6502-93723	62.000015	035777057292
Siberian Haze	6502-93731	62.000019	035777057308
Maple	6502-93327	62.000022	035777057254
Bold Bark	6502-93251	62.000023	035777057186
Black Walnut	6502-93293	62.000024	035777057223
Coffee Bean	6502-93269	62.000025	035777057193
Solitude	6502-93301	62.000029	035777057230
Pepper Black	6502-93236	62.000030	035777057162

**DECORATIVE
CONCRETE**
Catalog



STAMPS & STENCILS

Stencils

Rollers

Texture Rollers

Stamps, Mats & Skins

Tampers & Accessories

Rubbing Bricks



TEXTURE ROLLER COVERS

- Large Texture Roller Covers have a wide roller for imprinting continuous texture in a large area; Small Texture Roller Covers have a narrow roller for imprinting continuous texture in a small area
- Use with H&C Dry-Shake Color Release agent to prevent roller from sticking to fresh concrete
- Use alone to achieve texture, or over concrete stencils to add pattern
- Matching skinny texture mats are available

SIZE	PATTERN	SALES NO.	PART NO.	UPC
Large 22-5/8" x 7"	Slate	189-6455	32-221	743153322215
Small 6" x 5"	Slate	189-6463	32-222	743153322222
Large 22-5/8" x 7"	Granite	190-0166	32-224	743153322246
Small 6" x 5"	Granite	190-0182	32-225	743153322253
Large 22-5/8" x 7"	River Bed	190-1271	32-227	743153322277
Small 6" x 5"	River Bed	190-2345	32-228	743153322284
Large 22-5/8" x 7"	Stone	190-2394	32-230	743153322307
Small 6" x 5"	Stone	190-2840	32-231	743153322314
Large 22-5/8" x 7"	Rock Salt	190-3095	32-233	743153322338
Small 6" x 5"	Rock Salt	190-3103	32-234	743153322345
Large 22-5/8" x 7"	Cracked Calico	190-6221	32-298	743153322987
Small 6" x 5"	Cracked Calico	190-6254	32-299	743153322994



HEAVY SLATE TEXTURE ROLLER

- Easy push and pull imprint
- Five times faster than traditional stamping methods



HEAVY STONE TEXTURE ROLLER

- Easy push and pull imprint
- Five times faster than traditional stamping methods

SIZE	SALES NO.	PART NO.	UPC
9"	190-8276	25249	755719175760
23-1/2"	190-6452	25221	755719172356

SIZE	SALES NO.	PART NO.	UPC
9"	190-8359	25250	755719172592
23-5/8"	190-6460	25222	755719172363



ROCK SALT ROLLER

- Easy push and pull imprint
- Five times faster than traditional stamping methods



LIGHT SLATE TEXTURE ROLLER

- Easy push and pull imprint
- Five times faster than traditional stamping methods

SIZE	SALES NO.	PART NO.	UPC
9"	190-8185	25240	755719175746
24"	190-6650	25239	755719175739

SIZE	SALES NO.	PART NO.	UPC
9"	190-8557	25251	755719172608

Stamps, Mats & Skins



TEXTURE SKINNY MATS

- Skinny mat patterns match the patterns of BonWay texture rollers
- Use in tight areas where roller will not reach
- Useful for touch up in areas where deeper impression is desired

STYLE	SIZE	SALES NO.	PART NO.	UPC
Slate Skinny Mat	24" x 24" x 1/4"	183-9588	32-223	743153322321
Granite Skinny Mat	24" x 24" x 1/4"	190-1248	32-226	743153322260
River Bed Skinny Mat	24" x 24" x 1/4"	190-2386	32-229	743153322291
Stone Skinny Mat	24" x 24" x 1/4"	184-0305	32-232	743153322321
Rock Salt Skinny Mat	24" x 24" x 1/4"	184-0412	32-235	743153322352
Cracked Calico Skinny Mat	24" x 24" x 1/4"	184-6856	32-300	743153323007



TEXTURE MATS

- BonWay Texture Mats are made from flexible polyurethane. BonWay Texture Mats are available in a variety of patterns, textures and sizes. Use texture mats in fresh concrete to imprint a pattern mimicking brick or stone. Texture mats have two handles on the back, for easy lifting and placing
- Use H&C Dry-Shake Color Hardener for the base color of the concrete
- Use H&C Dry-Shake Color Release before tamping in mats, for easy release of mats from the concrete and to add color contrast
- Use the corresponding floppy mat around steps, edges and other tight places
- For mats where more than one color is available, mix the mats to achieve a more random pattern

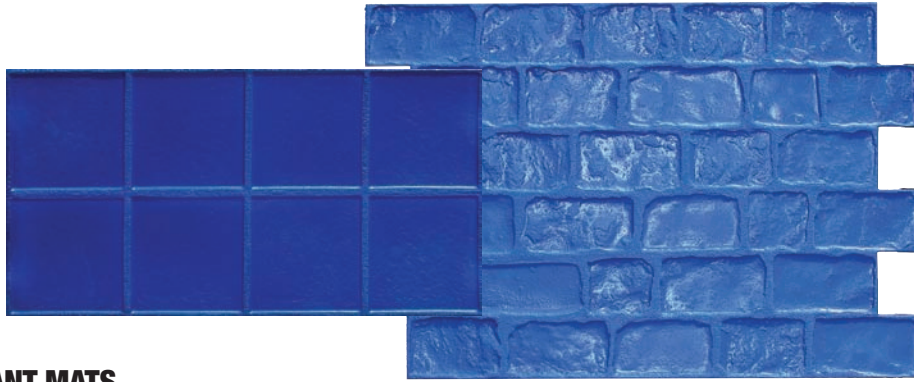
STYLE	SIZE	SALES NO.	PART NO.	UPC
Ashlar Cut Stone Texture Mat Red	24" x 24" x 1"	181-4920	12-595	743153125953
Ashlar Cut Stone Texture Mat Blue	24" x 24" x 1"	182-2329	12-881	743153128817
Ashlar Cut Stone Texture Mat Yellow	24" x 24" x 1"	182-2360	12-882	743153128824
Granite Sets Texture Mats	24" x 24" x 1"	181-4912	12-589	743153125892
European Fan Texture Mat	26" x 46" x 1"	181-5208	12-596	743153125960
London Cobblestone Texture Mat	17" x 30" x 1"	181-5216	12-597	743153125977
Running Bond Texture Mat	16" x 37" x 1"	181-6313	12-742	743153127421
Random Stone Texture Mat Blue	29" x 29" x 1"	181-5695	12-598	743153125984
Random Stone Texture Mat Yellow	29" x 29" x 1"	181-5836	12-599	743153125991
Random Stone Texture Mat Red	29" x 29" x 1"	181-6404	12-794	743153127940
Herringbone Brick Texture Mat	26" x 38" x 1"	181-6081	12-698	743153126981
Old Spanish Texture Mat	24" x 24" x 1"	181-6123	12-699	743153126998
Slate Texture Mat Red	18" x 36" x 1"	186-7290	32-482	743153324820
Slate Texture Mat Yellow	18" x 36" x 1"	186-7464	32-483	743153324837
Slate Texture Mat Blue	18" x 36" x 1"	186-8264	32-484	743153324844
Cut Stone Border Texture Mat	8-1/2" x 34" x 1"	181-6073	12-620	743153126202
6" Wood Strip Texture Mat	6" x 48" x 1"	182-5199	32-122	743153321225
6" Wood Strip Texture Mat	6" x 72" x 1"	182-5587	32-123	743153321232
6" Wood Strip Texture Mat	6" x 96" x 1"	182-6288	32-124	743153321249
12" x 12" Tile Texture Mat	24" x 42" x 1"	183-3789	32-169	743153321690
Random Split Rock Texture Mat Red	30" x 30" x 1"	182-9027	32-149	743153321492
Random Split Rock Texture Mat Blue	30" x 30" x 1"	183-1585	32-150	743153321508
Random Split Rock Texture Mat Yellow	30" x 30" x 1"	183-1635	32-151	743153321515
Lancaster Blue Stone Texture Mat	12" x 12" x 1"	185-2953	32-415	743153324158
Lancaster Blue Stone Texture Mat	18" x 18" x 1"	185-2961	32-416	743153324165
Lancaster Blue Stone Texture Mat	24" x 24" x 1"	185-5303	32-417	743153324172
Lancaster Blue Stone Texture Mat	30" x 30" x 1"	185-5311	32-418	743153324189
Lancaster Blue Stone Texture Mat	6" x 24" x 1"	185-6277	32-419	743153324196
Lancaster Blue Stone Texture Mat	12" x 18" x 1"	185-6301	32-420	743153324202
Lancaster Blue Stone Texture Mat	18" x 30" x 1"	185-2805	32-421	743153324127



FLOPPY MATS

- BonWay Floppy Mats are available in the same patterns and textures as the regular mats, but they are thinner and more flexible to get into tight places. Floppy mats do not have handles
- Use H&C Dry-Shake Color Hardener for the base color of the concrete
- Use H&C Dry-Shake Color Release before tamping in mats, for easy release of mats from the concrete and to add color contrast
- Use floppy mats with corresponding texture mats
- For floppy mats where more than one color is available, mix the mats for a more random appearance

STYLE	SIZE	SALES NO.	PART NO.	UPC
Ashlar Cut Stone Floppy Mat Red	24" x 24" x 1/2"	181-9945	12-875	743153128756
Ashlar Cut Stone Floppy Mat Blue	24" x 24" x 1/2"	182-2477	12-940	743153129401
Ashlar Cut Stone Floppy Mat Yellow	24" x 24" x 1/2"	182-2832	12-941	743153129418
Granite Sets Floppy Mat	24" x 24" x 1/2"	181-7220	12-870	743153128701
European Fan Floppy Mat	26" x 46" x 1/2"	182-1164	12-877	743153128770
London Cobblestone Floppy Mat	17" x 30" x 1/2"	182-1438	12-878	743153128787
Running Bond Floppy Mat	16" x 37" x 1/2"	181-9804	12-874	743153128749
Random Stone Floppy Mat Blue	29" x 29" x 1/2"	181-9473	12-871	743153128718
Random Stone Floppy Mat Yellow	29" x 29" x 1/2"	181-9788	12-872	743153128725
Random Stone Floppy Mat Red	29" x 29" x 1/2"	181-9796	12-873	743153128732
Herringbone Brick Floppy Mat	16" x 38" x 1/2"	182-0778	12-876	743153128763
Old Spanish Floppy Mat	24" x 24" x 1/2"	181-6867	12-868	743153128688
Slate Floppy Mat Red	18" x 36" x 1/2"	187-1011	32-485	743153324851
Slate Floppy Mat Yellow	18" x 36" x 1/2"	187-1060	32-486	743153324868
Slate Floppy Mat Blue	18" x 36" x 1/2"	187-2076	32-487	743153324875
Cut Stone Border Floppy Mat	8-1/2" x 34" x 1/2"	181-7022	12-869	743153128695
6" Wood Strip Floppy Mat	6" x 48" x 1/2"	183-4308	32-170	743153321706
6" Wood Strip Floppy Mat	6" x 72" x 1/2"	183-4530	32-171	743153321713
6" Wood Strip Floppy Mat	6" x 96" x 1/2"	183-5313	32-172	743153321720
12" x 12" Tile Floppy Mat	24" x 42" x 1/2"	183-5354	32-173	743153321737
Random Split Rock Floppy Mat	30" x 30" x 1/2"	183-7483	32-176	743153321768



BONWAY ELEPHANT MATS

- Mats are made from flexible polyurethane
- Larger mats mean fewer placements
- For easy placement and pick up there are 4 handles on the back of the mat
- Use with H&C Dry-Shake Color Release Agent for easy removal and to add color interest
- Lettered mats can be mixed to achieve a more random appearance
- Use corresponding floppy mats in tight spaces and around walls or steps

STYLE	SIZE	SALES NO.	PART NO.	UPC
Spanish Tile Elephant Mat	24" x 28" x 1"	183-3631	32-166	743153321669
Arizona Random Stone Elephant Mat	62" x 62" x 1"	187-2639	32-488	743153324882
Ashlar Blue Stone Elephant Mat A	36" x 36" x 1"	183-1643	32-152	743153321522
Ashlar Blue Stone Elephant Mat B	36" x 36" x 1"	183-1650	32-153	743153321539
Ashlar Blue Stone Elephant Mat C	36" x 36" x 1"	183-2146	32-154	743153321546
Flagstone Elephant Mat A	51" x 51" x 1"	183-2211	32-158	743153321584
Flagstone Elephant Mat B	51" x 51" x 1"	183-2336	32-159	743153321591
Pennsylvania Cobble Stone Elephant Mat	32" x 48" x 1"	183-3003	32-162	743153321621
Bushed Stone Elephant Mat	30" x 60" x 1"	183-3532	32-164	743153321645



BONWAY ELEPHANT FLOPPY MATS

- BonWay Elephant floppy mats are thinner and more flexible than elephant mats
- Floppy mats match the texture patterns of Elephant Mats
- Use when stamping areas against a wall, where flexibility is needed
- Mats are lightweight and do not have handles

STYLE	SIZE	SALES NO.	PART NO.	UPC
Spanish Tile Elephant Floppy Mat	24" x 48" x 1/2"	183-3649	32-167	743153321676
Arizona Random Stone Elephant Floppy Mat	62" x 62" x 1/2"	187-3546	32-489	743153324899
Ashlar Blue Stone Elephant Floppy Mat A	36" x 36" x 1/2"	183-2153	32-155	743153321553
Ashlar Blue Stone Elephant Floppy Mat B	36" x 36" x 1/2"	183-2161	32-156	743153321560
Ashlar Blue Stone Elephant Floppy Mat C	36" x 36" x 1/2"	183-2179	32-157	743153321577
Flagstone Elephant Floppy Mat A	51" x 51" x 1/2"	183-2351	32-160	743153321607
Flagstone Elephant Floppy Mat B	51" x 51" x 1/2"	183-2559	32-161	743153321614
Pennsylvania Cobble Stone Elephant Floppy Mat	32" x 48" x 1/2"	183-3516	32-163	743153321638
Bushed Stone Elephant Floppy Mat	30" x 60" x 1/2"	183-3599	32-165	743153321652



BONWAY SEAMLESS TEXTURE SKINS

- BonWay Seamless Texture skins are flexible and lightweight
- Seamless skins may be used in fresh concrete or with overlay systems
- Seamless skins provide an overall texture, but do not have grout lines
- Each pattern is available in three sizes
- The largest size (48" x 48") has handles on the back of the skin
- All skins have feathered edges
- Use H&C Dry-Shake Color Release agent for easy release of the mats and to add color interest

STYLE	SIZE	SALES NO.	PART NO.	UPC
Slate Texture Skin	12" x 12" x 1/4"	184-8613	32-400	743153324004
Slate Texture Skin	36" x 36" x 1/4"	184-9207	32-401	743153324011
Slate Texture Skin	48" x 48" x 1/4"	184-9892	32-402	743153324028
Italian Slate Texture Skin	12" x 12" x 1/4"	106-3700	32-403	743153324035
Italian Slate Texture Skin	36" x 36" x 1/4"	185-1542	32-404	743153324042
Italian Slate Texture Skin	48" x 48" x 1/4"	185-1633	32-405	743153324059
Gulf Coast Sea Shell Texture Skin	12" x 12" x 1/4"	185-1641	32-406	743153324066
Gulf Coast Sea Shell Texture Skin	36" x 36" x 1/4"	185-1658	32-407	743153324073
Gulf Coast Sea Shell Texture Skin	48" x 48" x 1/4"	185-1666	32-408	743153324080
Blue Stone Texture Skin	12" x 12" x 1/4"	185-1674	32-409	743153324097
Blue Stone Texture Skin	36" x 36" x 1/4"	185-1682	32-410	743153324103
Blue Stone Texture Skin	48" x 48" x 1/4"	185-1690	32-411	743153324110
Limestone Texture Skin	12" x 12" x 1/4"	185-7697	32-470	743153324707
Limestone Texture Skin	36" x 36" x 1/4"	185-7903	32-471	743153324714
Limestone Texture Skin	48" x 48" x 1/4"	185-9990	32-472	743153324721
Bushed Stone Texture Skin	12" x 12" x 1/4"	186-0741	32-473	743153324738
Bushed Stone Texture Skin	36" x 36" x 1/4"	186-0758	32-474	743153324745
Bushed Stone Texture Skin	48" x 48" x 1/4"	186-2622	32-475	743153324752
Mayan Texture Skin	12" x 12" x 1/4"	186-2853	32-476	743153324769
Mayan Texture Skin	36" x 36" x 1/4"	186-2879	32-477	743153324776
Mayan Texture Skin	48" x 48" x 1/4"	186-4503	32-478	743153324783
Chiseled Slate Texture Skin	12" x 12" x 1/4"	186-4842	32-479	743153324790
Chiseled Slate Texture Skin	36" x 36" x 1/4"	186-5344	32-480	743153324806
Chiseled Slate Texture Skin	48" x 48" x 1/4"	186-5617	32-481	743153324813



BORDER STAMPS

- BonWay Border Stamps are made from flexible polyurethane
- Use border stamps to create an attractive border for concrete jobs, either to set off plain concrete or in conjunction with other stamping mats
- Use H&C Dry-Shake Color Release agent for easy release of the mats and to add color interest

STYLE	SIZE	SALES NO.	PART NO.	UPC
Whale Border	12" x 48" x 1"	183-8150	32-179	743153321799
Leaf and Flower Border	12" x 36" x 1"	183-7897	32-178	743153321782
Tile Corner	18-1/4" x 20-3/4" x 1"	183-6048	32-175	743153321751
Tile Border	14" x 47-3/4" x 1"	183-5396	32-174	743153321744
Bushed Border	12" x 48" x 1"	183-7848	32-177	743153321775
Grapevine Border	12" x 48" x 1"	182-8425	32-148	743153321485



NATURE STAMPS

- Create a unique look in your concrete surface with BonWay Nature Stamps
- Can be used on walls, floors, water gardens, entryways and virtually any concrete surface or overlay
- Use with H&C Dry-Shake Color Release Agent for easy removal and attractive color choices

STYLE	SIZE	SALES NO.	PART NO.	UPC
Double Pin Oak Leaf Stamp	14" x 10"	182-7062	32-137	743153321379
Single Pin Oak Leaf Stamp	8" x 6"	182-7070	32-138	743153321386
Fern Leaf Stamp	14" x 6"	182-7088	32-139	743153321393
Tropical Leaf Stamp	12" x 8"	182-7161	32-141	743153321416
Starfish Stamp	10"	182-7567	32-142	743153321423
Sand Dollar Stamp	8"	182-8201	32-143	743153321430
Scallop Shell Stamp	14" x 13"	182-8219	32-144	743153321447
Shark Tooth Stamp	6"	182-8227	32-145	743153321454
Whitetail Deer Hoof Stamp Set	4"	182-6577	32-132	743153321324
Wolf Paw Stamp Set	6"	182-6742	32-133	743153321331
Bear Paw Stamp Set	10"	182-6817	32-134	743153321348
Raccoon Foot Stamp Set	5"	182-6916	32-135	743153321355
Turkey Foot Stamp Set	6"	182-7054	32-136	743153321362
Big Bonyfish Stamp	31"	184-7268	32-307	743153323076
Alligator Stamp	86"	184-7912	32-308	743153323083
Trilobite Stamp	6-1/2" x 5"	184-4604	32-266	743153322666
Baryonix Head Stamp	14" x 7"	184-5072	32-267	743153322673
Flatfish Stamp	6" x 6"	184-5106	32-268	743153322680
Gryodus Stamp	8" x 8"	184-5122	32-269	743153322697



BONWAY STEPLINER FORMS

- Designed to produce texture on the edge of concrete steps, risers, terraces and countertops
- Can be reused many times
- Creates a heavy stone texture
- Use H&C Dry-Shake Color Release, for easy mat removal and to add color interest

SIZE	SALES NO.	PART NO.	UPC
48" x 6"	183-8481	32-198	743153321980
72" x 6"	183-9307	32-199	743153321997