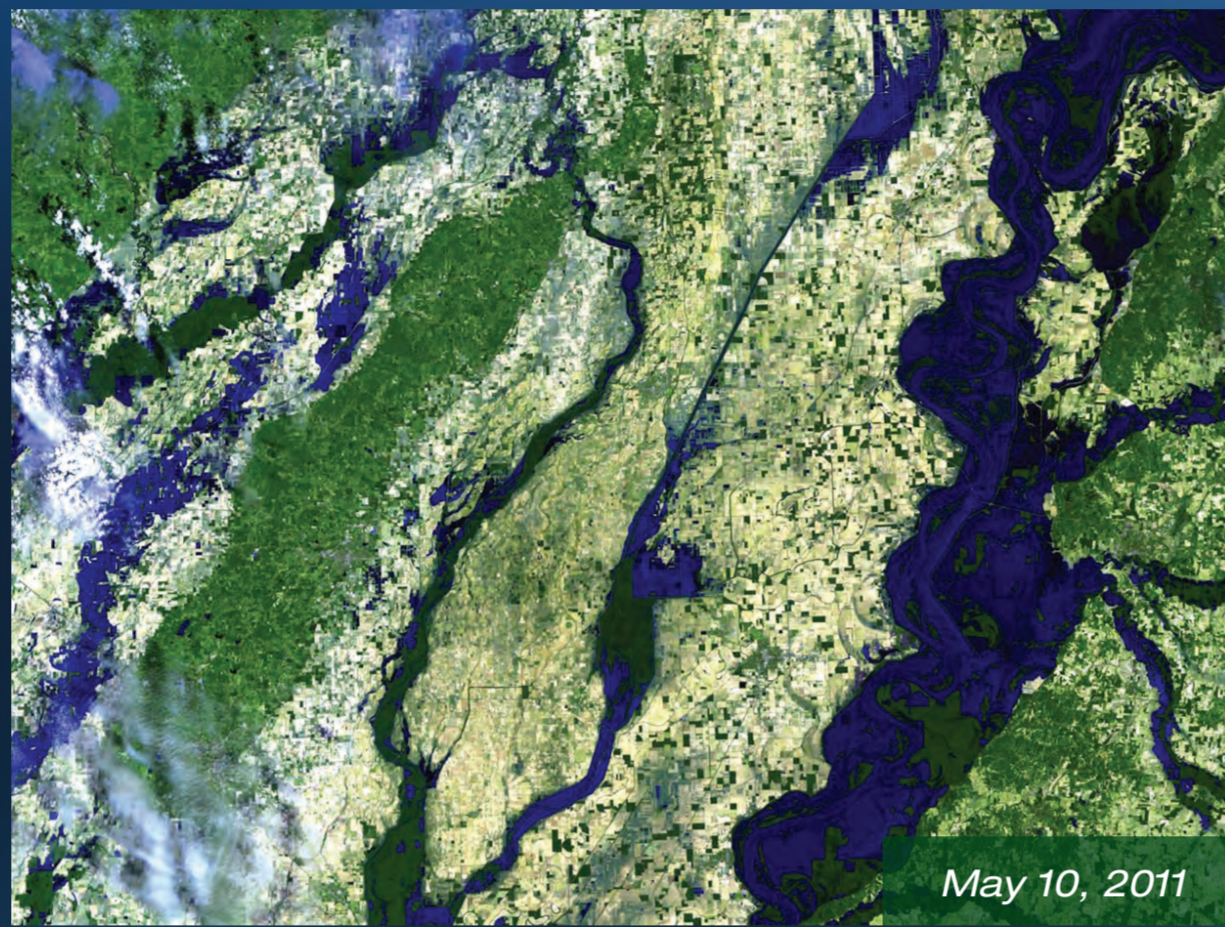


# When Natural Disasters Strike



May 12, 2006

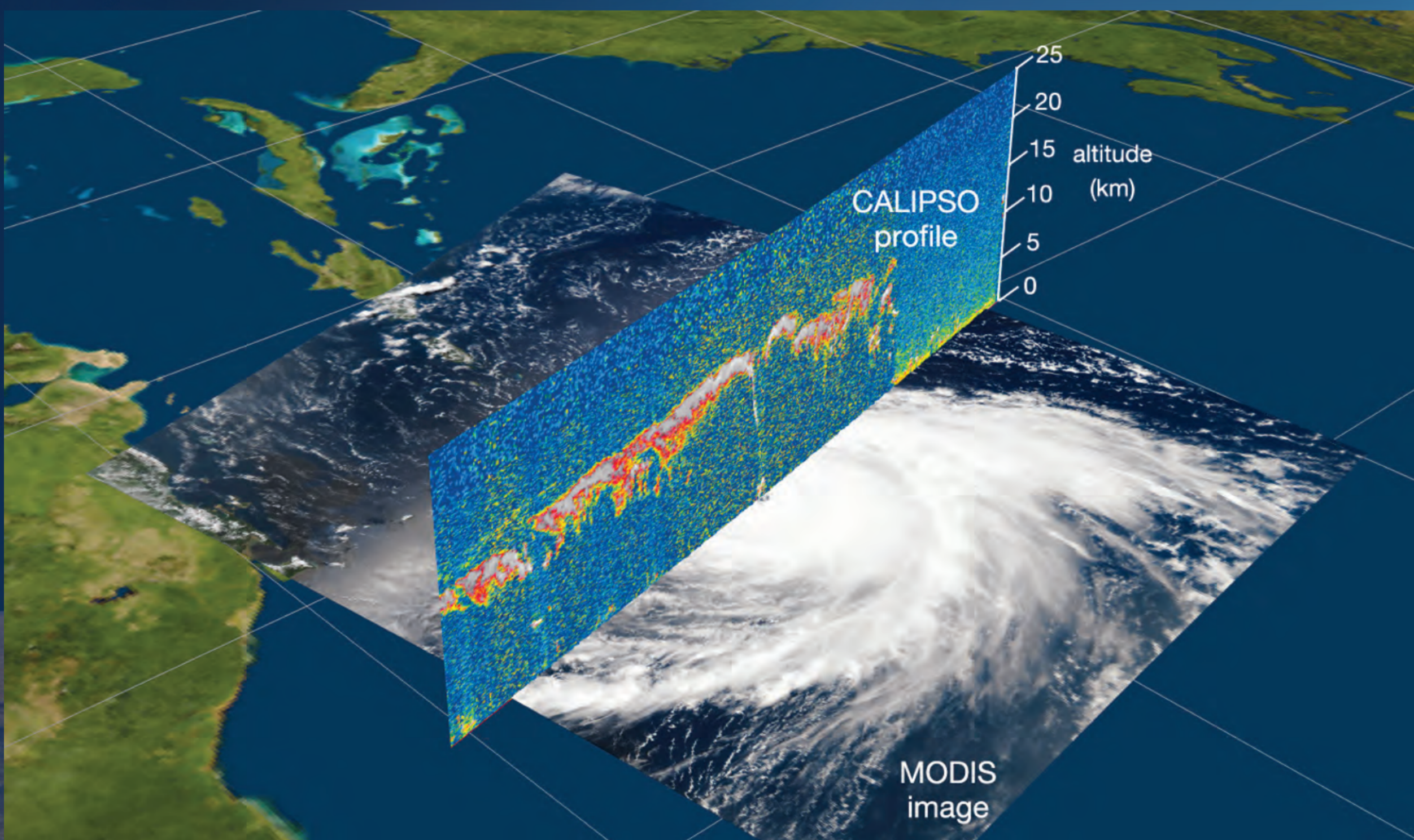


May 10, 2011

Landsat satellite data shows the major flooding of the Mississippi River along Tennessee, Kentucky, Missouri, and Arkansas as seen from 438 miles above the Earth.

- The Mississippi River floods in April and May 2011 were among the largest and most damaging in the last century.

The Wallow Fire of 2011 burned more than 700 square miles (1,813 square kilometers). About 6,000 people were evacuated from the American Southwest, first responders and air quality experts used satellite data to track the fire and plan their response.



Hurricane Bill nears Cuba in 2009. NPP data, like that of atmospheric moisture, temperature, and clouds, in combination with other satellite data, like CALIPSO, will improve forecasts of hurricanes.



Photograph courtesy of Karl Greer, US Forest Service



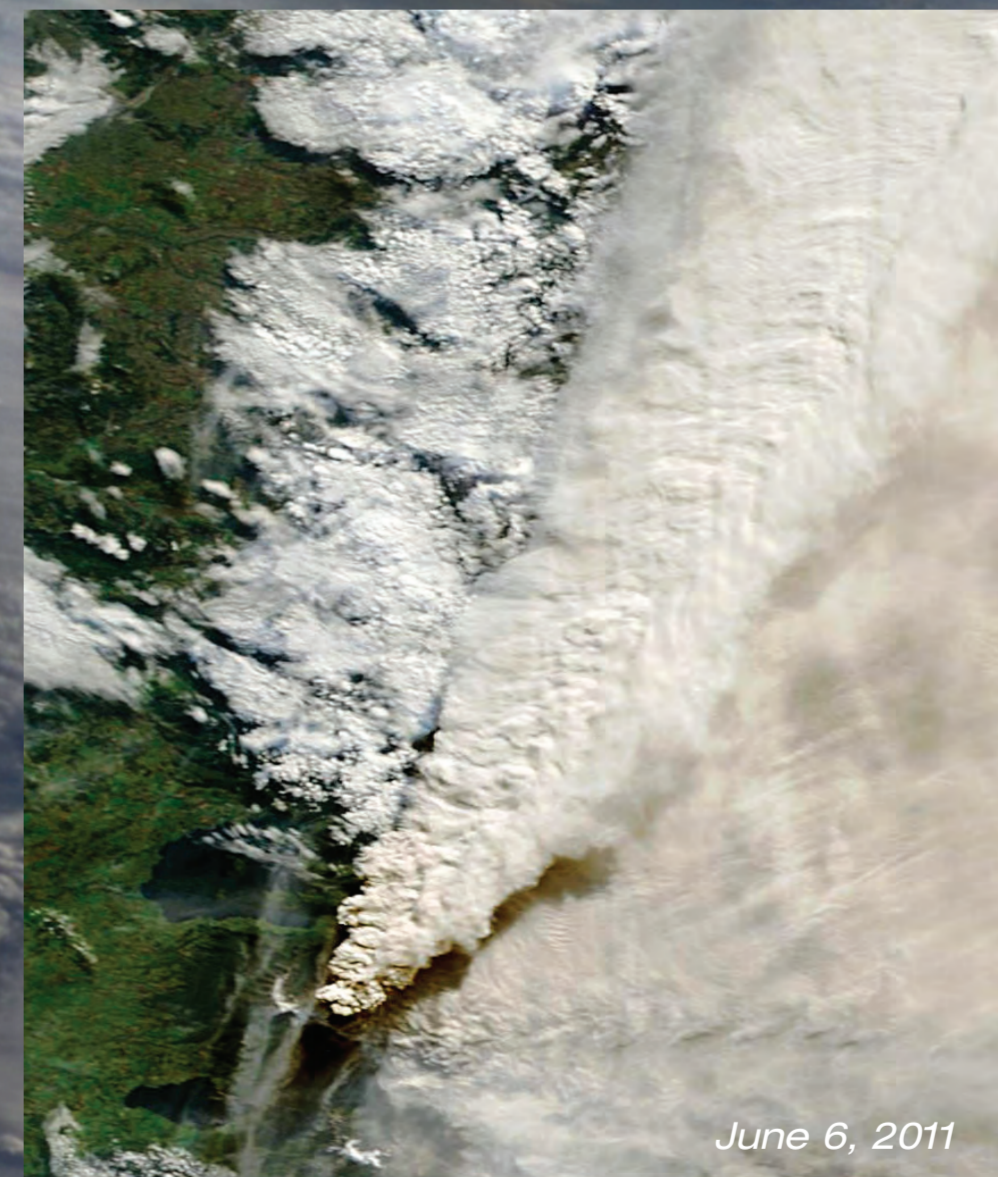
October 26, 2003

Massive wildfires raging across southern California. The Moderate Resolution Imaging Spectroradiometer (MODIS) on the Terra satellite captured this image of the fires and smoke.



Photograph courtesy of US National Guard

A Louisiana National Guardmember helps with the evacuation in the aftermath of Hurricane Katrina in 2005.



June 6, 2011

NASA's Aqua satellite captured this stunning image of the eruption of the Puyehue volcano in southern Chile. The event shot ash and smoke six miles high into the atmosphere and forced the evacuation of more than 4,000 residents.

# NPP

nppoes preparatory project