

Part 1 - Creation to Jacob

Old Testament Overview

Level 3 - Student



12 Lessons



Stick Figuring Through the Bible



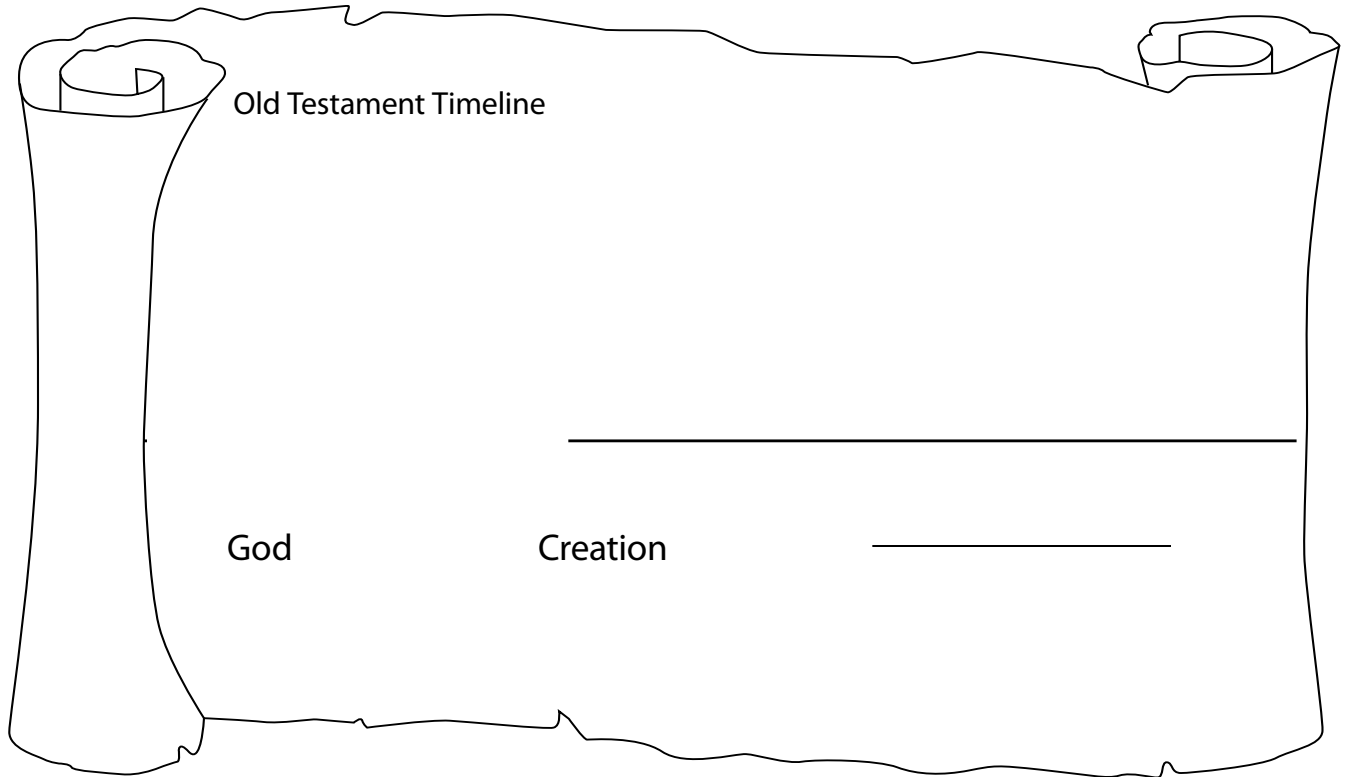
Old Testament Overview Part 1

A Chronological Study of the Characters and Events of the
Old Testament from Creation to Jacob.

Sample Lesson

~

Student Pages



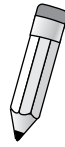
Memory Verse Review

Genesis 2:7

Genesis 1:31

Genesis 1:1

The Fall



Genesis 3:1-5

The Serpent and Eve

Genesis 3:6

Adam and Eve Ate

Genesis 3:7-8

Adam and Eve Hid

Genesis 3:9-13

God Questioned Adam and Eve

Genesis 3:14-19

The Punishment

Genesis 3:15

The Promise

Genesis 3:20-24

The Provision

Lesson Review

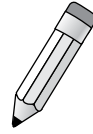
1. Who talked to Eve about eating the forbidden fruit?
2. How did Adam and Eve sin?
3. What was the sin that Adam and Eve committed?
4. What did they do after they had sinned?
5. What was the punishment for their sin?
6. What is the promise found in Genesis 3:15?
7. What immediate provision did God make for Adam and Eve?
8. What do we learn about God from these verses?

Memory Verse: Genesis 3:15

Student Drawing Page

Create a Character /Event card for The Fall.

Draw your favorite part of the lesson you have just studied.



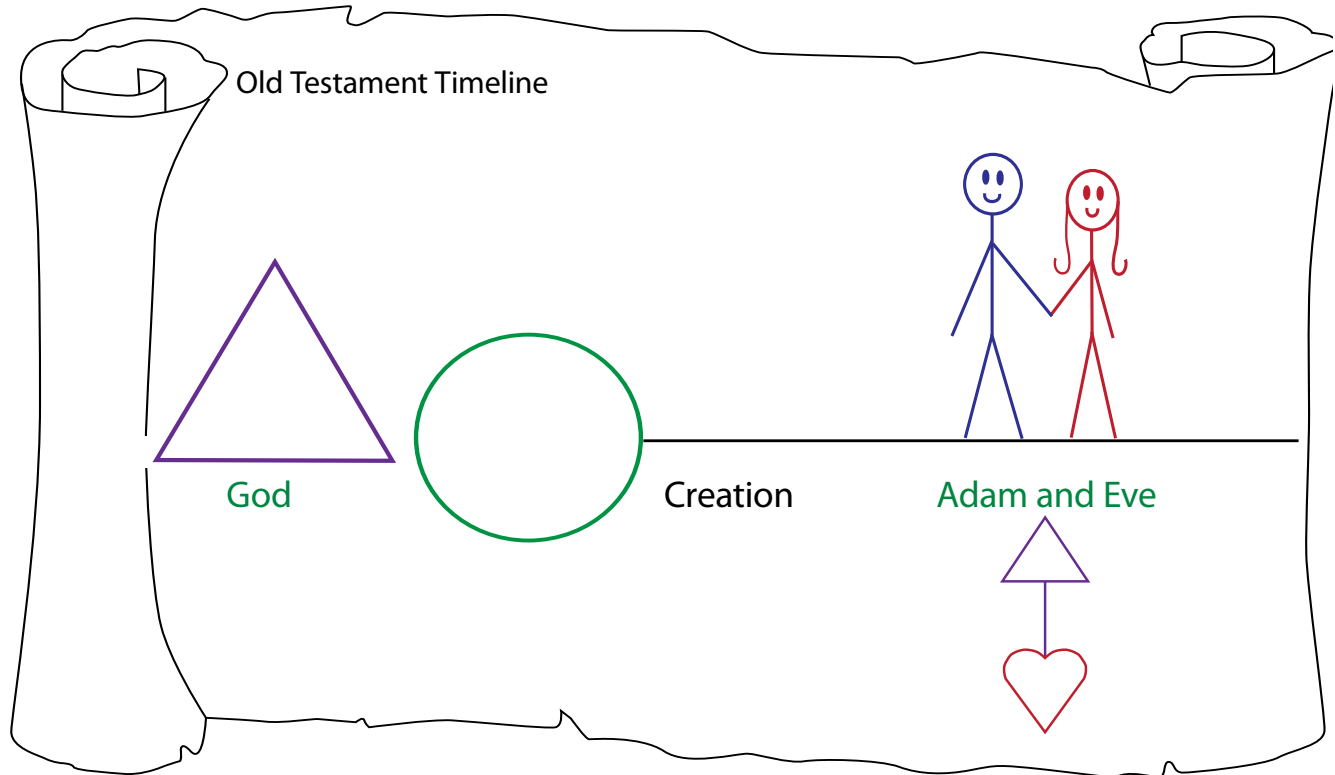
Write or recite Genesis 3:15.

Sample Lesson

~

Teacher Pages

Timeline Review



Memory Verse Review

Genesis 2:7

Genesis 1:31

The Fall

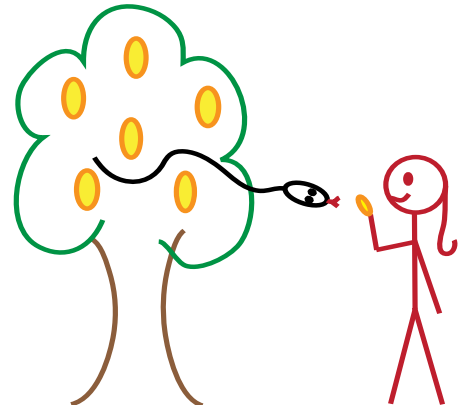
Memory Verse: Genesis 3:15

The Serpent and Eve

Read aloud: Genesis 3:1-5

Discuss The Serpent and Eve: The serpent questioned God's command and focused on Eve's desire for the fruit.

Draw and have students draw: The tree with the serpent talking to Eve.

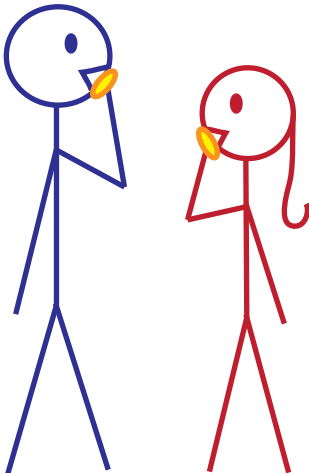


Adam and Eve Ate

Read aloud: Genesis 3:6

Discuss Adam and Eve Ate: Eve believed the serpent, followed her own desires, and ate the forbidden fruit (the type of fruit is unknown). Eve gave Adam the forbidden fruit, and he too disobeyed (sinned against) God and ate. At this point, death entered into the world as a result of their sin of disobedience.

Draw and have students draw: Adam and Eve eating the forbidden fruit.



Look up the following words in a Bible Dictionary:

Serpent (Genesis 3:1)

Fruit (Genesis 3:3)

Cursed (Genesis 3:14)

Seed (Genesis 3:15)

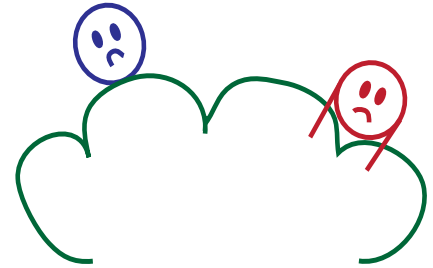
Enmity (Genesis 3:15)

Bruise (Genesis 3:15)

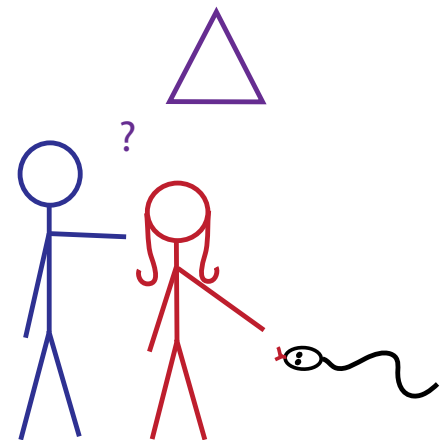
Adam and Eve Hid from God

Read aloud: Genesis 3:7-8

Discuss Adam and Eve Hid from God: Adam and Eve tried to hide from God by covering themselves with fig leaves. When God came to the garden, Adam and Eve hid from Him.



Draw and have students draw: Adam and Eve hiding from God.



God Questioned Adam and Eve

Read aloud: Genesis 3:9-13

Discuss God Questioned Adam and Eve: God knew that Adam and Eve had eaten the forbidden fruit. When God questioned them and Adam blamed Eve and Eve blamed the serpent.

Draw and have students draw: God questioning Adam, Adam blaming Eve, and Eve blaming the serpent.

Completed Student Page

Teacher Notes

Grapevine Studies
Old Testament Part 1

Student
Lesson 4

The Fall

<p>Genesis 3:1-5</p> <p>The Serpent and Eve</p>	<p>Genesis 3:6</p> <p>Adam and Eve Ate</p>
<p>Genesis 3:7-8</p> <p>Adam and Eve Hid</p>	<p>Genesis 3:9-13</p> <p>God Questioned Adam and Eve</p>

*2010 by Grapevine Studies

18

The Punishment

Read aloud: Genesis 3:14-19

Discuss The Punishment: God had warned Adam that if he ate of the forbidden fruit, he would die. The consequences for Adam were: his relationship with God changed, Adam’s physical body began to age and he eventually died, and God drove Adam and Eve out of the Garden of Eden.

Chart and have students chart: The punishments for the serpent, the man, and the woman.

The Serpent

Cursed above all animals

Crawl on belly

Crushed by the seed of Woman

The Woman

Pain in childbirth

Desire for her husband

Man will be head of Woman

The Man

Cursed is the ground with thorns and thistles

By hard work man would eat

Teacher Notes

Completed Student Page

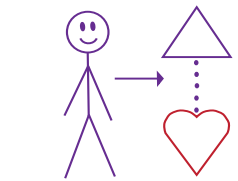
Grapevine Studies
Old Testament Part 1 Student
Lesson 4

Genesis 3:14-19

The Serpent	The Woman	The Man
Cursed above all animals	Pain in childbirth	Cursed is the ground with thorns and thistles
Crawl on belly	Desire for her husband	By hard work man would eat
Crushed by the seed of Woman	Man will be head of Woman	

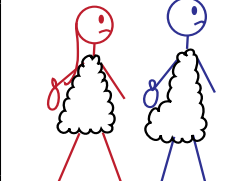
The Punishment

Genesis 3:15



The Promise

Genesis 3:20-24



The Provision

Lesson Review

1. Who talked to Eve about eating the forbidden fruit?
2. How did Adam and Eve sin?
3. What was the sin that Adam and Eve committed?
4. What did they do after they had sinned?
5. What was the punishment for their sin?
6. What is the promise found in Genesis 3:15?
7. What immediate provision did God make for Adam and Eve?
8. What do we learn about God from these verses?

Memory Verse: Genesis 3:15

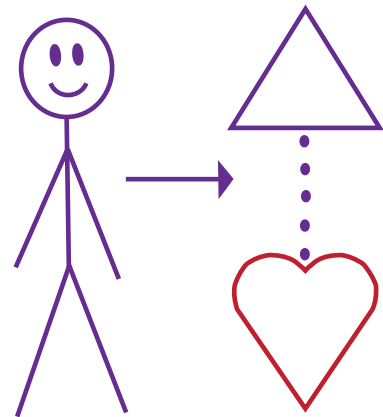
*2010 by Grapevine Studies 17

The Promise

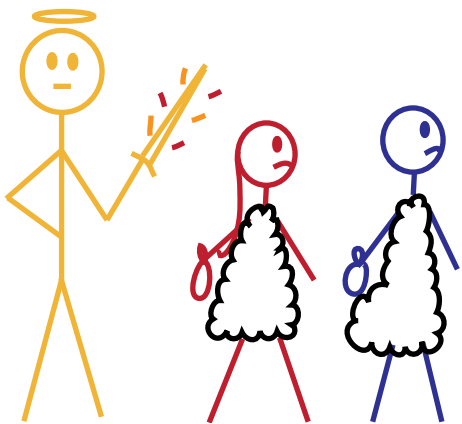
Read aloud: Genesis 3:15

Discuss The Promise: The promise was that one day the seed of woman would come. This seed would be a man, the Messiah, born of woman, who would crush the serpent and restore man's relationship with God. This is the first clue to who Messiah, born of a woman, would be.

Draw and have students draw: The purple God triangle with a dotted line to man's heart and a note that the dots represent the Messiah.



EDEN



The Provision

Read aloud: Genesis 3:20-24

Discuss The Provision: God provided the first animal sacrifice for the sin of Adam and Eve. As a reminder, He provided them with coverings of animal skins as they left the Garden.

Draw and have students draw: Adam and Eve leaving the garden dressed in animal skins. Include an angel with a flaming sword standing guard at the entrance of Eden.

Lesson Review

1. Who talked to Eve about eating the forbidden fruit? **The serpent.**
2. How did Adam and Eve sin? **By eating the forbidden fruit.**
3. What was the sin that Adam and Eve committed? **They disobeyed God's command.**
4. What did they do after they had sinned? **They sewed fig leaves together to cover themselves and hid from God.**
5. What was the punishment for their sin? **See chart.**
6. What is the promise found in Genesis 3:15? **One day the seed of woman, the Messiah, would come and restore the broken relationship between God and man.**
7. What immediate provision did God make for Adam and Eve? **God provided skins of animals as coverings when they left the garden.**
8. What do we learn about God from these verses? **God does punish sin, but He provides for us even when we sin.**

Memory Verse: Genesis 3:15

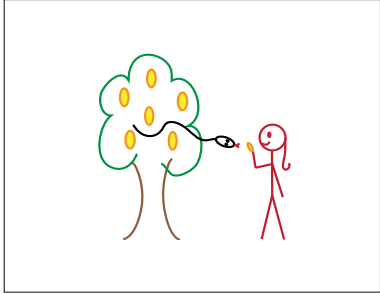
Level 3 Student Review Page

Grapevine Studies
Old Testament Part 1

Student
Lesson 4

Student Drawing Page

Create a Character/Event card for The Fall.
Draw your favorite part of the lesson you have just studied.



Write or recite Genesis 3:15.

*2010 by Grapevine Studies 18

Information for the The Fall card:

- God's command – Do not eat.
- The serpent deceived Eve.
- Adam sinned when he ate the forbidden fruit.
- Sin broke the relationship between God and man.
- God punished Adam, Eve, and the serpent.
- God provided coats of skin for Adam and Eve.
- God promised the Messiah would restore man's relationship to God.

Memory Verse: Genesis 3:15

Level 4 Quest Page

Noah and the Flood

Topical Bible Exercise

Give a biblical definition for *walking with God*.
Nave's, page 507

Bible Dictionary Exercise

What is a *cubit*?
Zondervan's, pages 120 and 605

Concordance Exercise

How often is *flood* referred to in the Bible?
35 times (Cruden's, page 179)

Grapevine Studies
Old Testament Part 1

Student
Lesson 6

Quest Page

Topical Bible Exercise

What do you learn about the rainbow?

Bible Dictionary Exercise

Give the meaning of the Tower of Babel.

Bible Concordance Exercise

Give the first reference to language in the Bible?

Quest Question

When God gives a command, what options do we have?

*2010 by Grapevine Studies 24

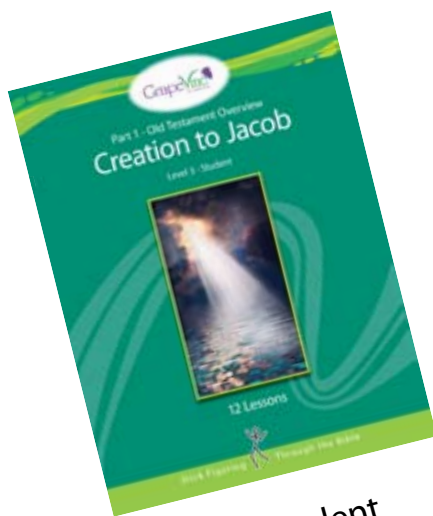
Quest Question

Was the Flood of Noah a worldwide flood? Give your reasons?
Yes, Genesis 7:19-20 referred to the mountains being covered. Genesis 9:11 and 13 refer to God's promise never to destroy the earth with a flood again.



We hope you have enjoyed your sample lesson!

Continue your study of the
Old Testament today!



Student



Teacher

Teacher Hotline

Have questions?

877-436-2317

Mon - Thur 9-5 MST

Order Today!

877-436-2317

www.GrapevineStudies.com