

## Floating Sheerlegs

TTR Code no.: 50.012

Self-propelled seagoing sheerlegs with a 400 tns lifting capacity built in 1971

### Dimensions

Length : 45,00 m  
Beam : 21,00 m  
Draft : 2,00 m  
Depth : 3,70 m  
Gross Tonnage : 864  
Nett Tonnage : 257,84

### Lifting Capacity

Tons Main Tackle : 400 (2x200)  
Tons Top Tackle : 200 (2x100)  
Tons Auxiliary Tackle : 10 (2x5)

### Mooring Winches

Aft : 2  
Forward : 2

### Anchor Winches

Aft : 2 x 660 kg. with 300 mtr chain 22 mm

### Accommodation

Persons : 12

### Generator Plant

Main : 2 x 215 kVA, 400 volt  
Auxiliary : 1 x 50 kVA, 400 volt

Tenwolde Transport  
en Repair B.V.

P.O. Box 5023  
3274 ZJ Heineoord  
the Netherlands

Tel: +31(0)186-603333  
Fax: +31(0)186-603619  
info@tenwolde.com

Visiting address:  
Boonsweg 19  
3274 LH Heineoord  
the Netherlands

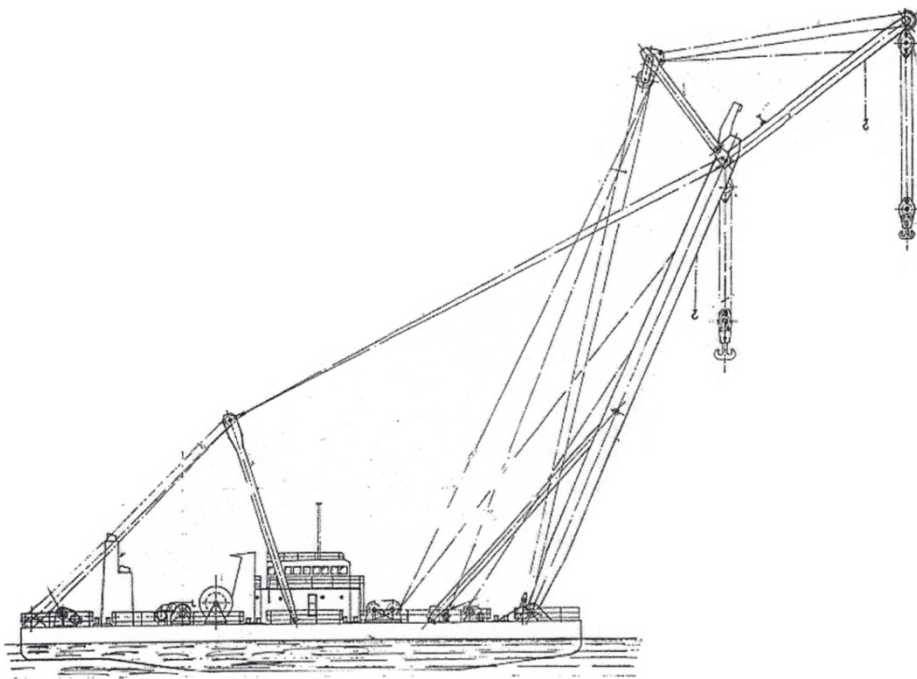


**Propulsion / Bow Thruster**

: 2 x 380 HP - Werkspoor RHO-215K  
Driving 2 voith Schneider propellers model 16G/100

**Various**

: Wheelhouse equipped for independent navigation  
2 Ballast pumps of 300 m<sup>3</sup> / hour  
Workboat  
Workshop  
2 Diesel fuel tanks of 17,70 m<sup>3</sup>  
1 day tank 1800 ltr.



Tenwolde Transport  
en Repair B.V.

P.O. Box 5023  
3274 ZJ Heinenoord  
the Netherlands

Tel: +31(0)186-603333  
Fax: +31(0)186-603619  
info@tenwolde.com

Visiting address:  
Boonsweg 19  
3274 LH Heinenoord  
the Netherlands

