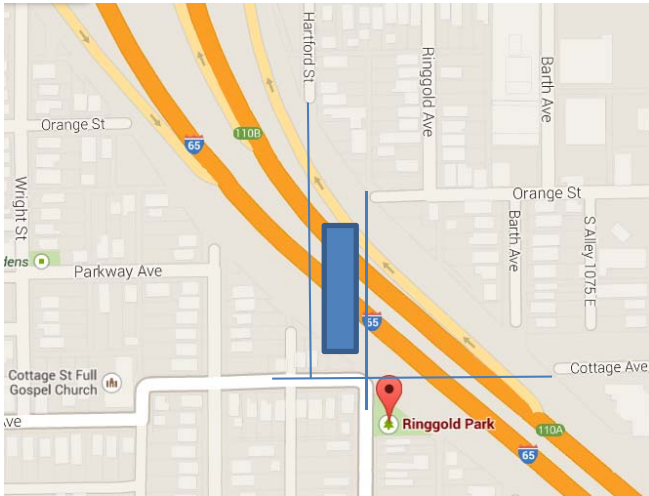


Rediscovering Ringgold Park

Bates-Hendricks is a neighborhood visibly growing greener each spring. You might say we've developed a knack for creating and enhancing inspiring green spaces. In recent years, residents and partners, such as KIB, have tackled and improved everything from existing city parks and medians to rugged empty lots. Boldly bearing the title "An Indianapolis Garden District" in the Miracle Mile Parade this year, we've got the parks to prove it: Baumann, Czerny, Hendricks, Orange, as well as School 31 Garden, New Jersey Street Esplanade...to name just a few of our green spaces.

The BHNA approach to reshaping earth is far from haphazard. Before undertaking a project, leadership works to ensure changes are sensitive to traces of the past, reflective of current needs, and striving to meet the anticipated desires of the future. That's why when long-time residents' fond recollections of Ringgold Park reached the ears of BHNA leadership, research and reflection on the journey of the park ensued.



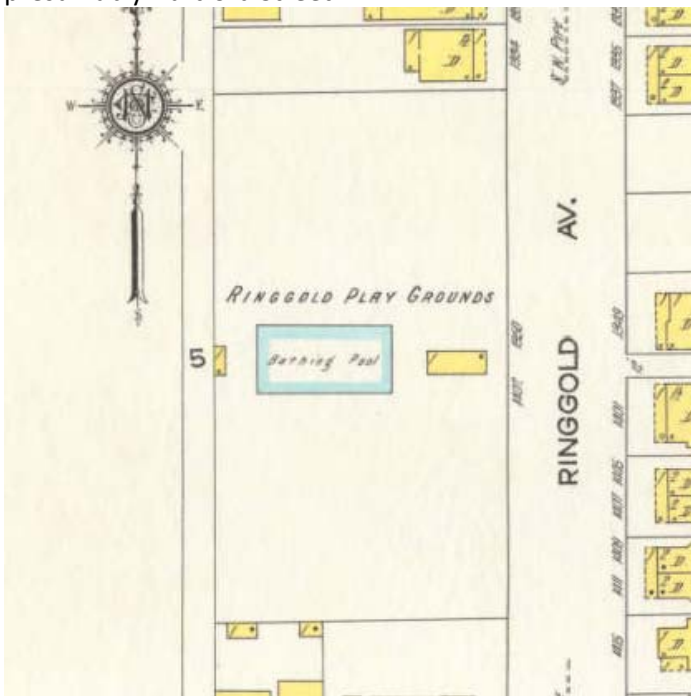
GOOGLE MAPS WITH GRAPHIC OF APPROXIMATE ORIGINAL LOCATION, 2014

Currently located at the corner of Cottage and Ringgold Avenues, the relocated park is a downsized victim of transportation development and a shadow of its former self. Using local history collections of several Indy institutions and the Drawings and Documents Archive at Ball State University's College of Architecture and Planning, here's what was discovered:

CHRONOLOGY

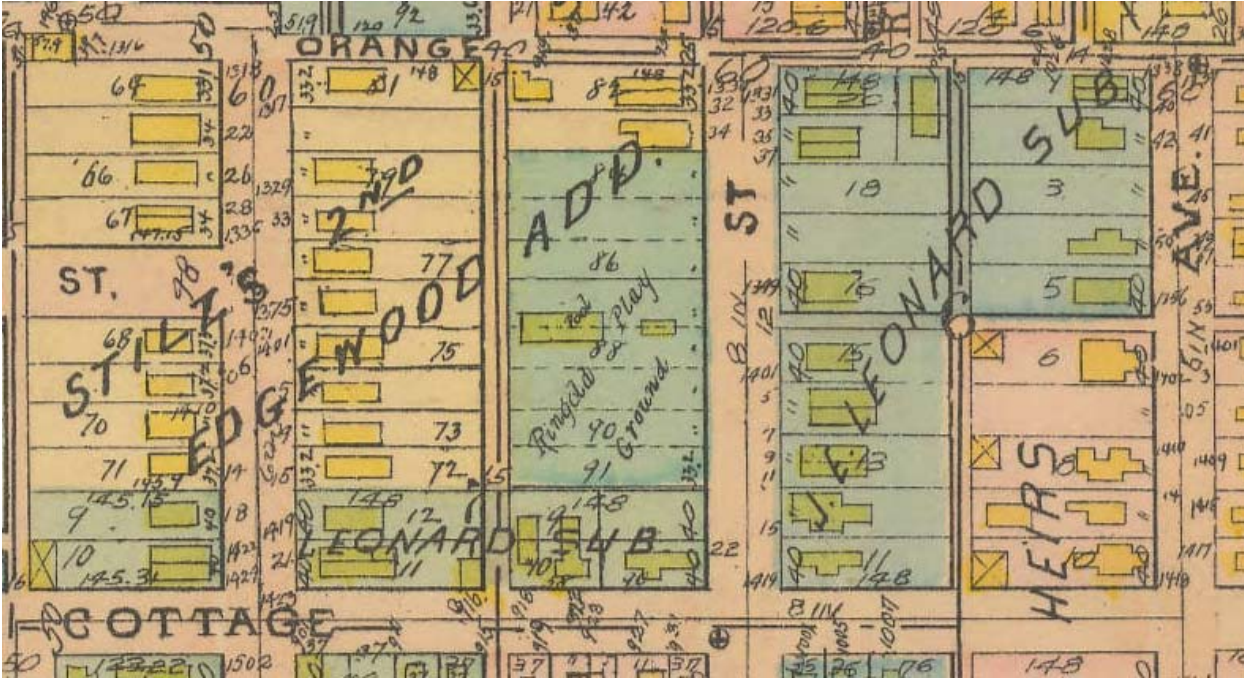
19XX: park established sometime in the early 20th century

1915: Ringgold Play Grounds is detailed on the Indianapolis Sanborn Map #144, 1915. A bathing pool is depicted. A playground block (with residential plats to the north and south) is bordered by Cottage, Ringgold, Orange, and presumably Hartford Street.



INDIANAPOLIS SANBORN MAP #144, 1915 (INDIANAPOLIS SANBORN MAPS, IUPUI)

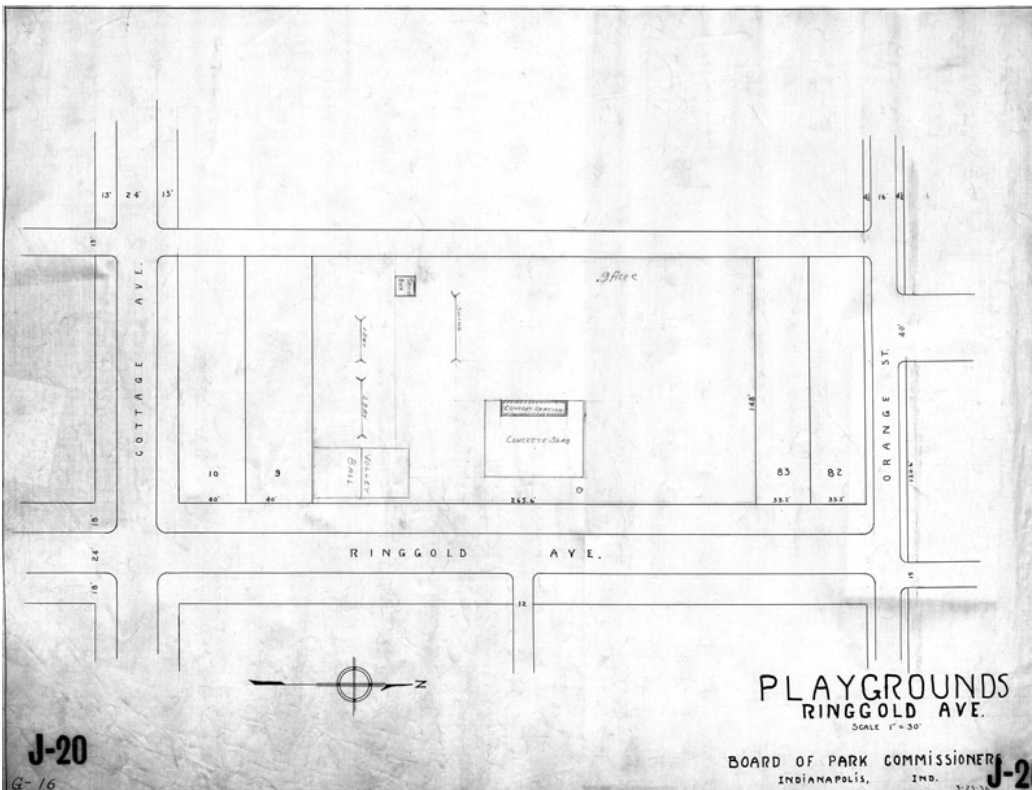
1916: Baist Atlas Plan depiction of park is consistent with the 1915 Sanborn map. Hartford can be confirmed as fourth border street.



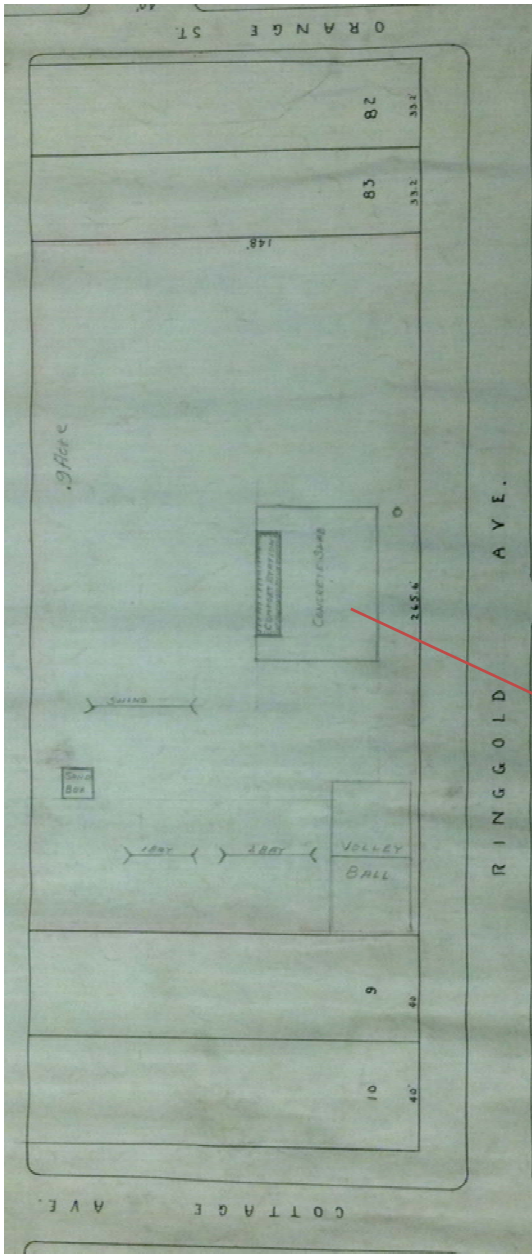
INDIANAPOLIS BAIST ATLAS PLAN # 19, 1916 (INDIANAPOLIS SANBORN MAPS, IUPUI)

1927: Baist Atlas Plan consistent with the 1916 map.

1936: The park is depicted on a March 25, 1936 Indianapolis Parks plan. A 0.9 acre playground (Playground, Ringgold Ave) is bordered by residential plats to the north and south (south configuration changed). The border streets are Cottage, Ringgold, Orange, and Hartford. Details (swings, volleyball court, etc.) are penciled in on the plan. A bathing pool is no longer depicted.



INDIANAPOLIS PARKS DEPARTMENT LANDSCAPE ARCHITECTURAL RECORDS 1898-1988
DRAWINGS + DOCUMENTS ARCHIVE, BALL STATE UNIVERSITY



CONCRETE SLAB / COMFORT STATION
INDIANAPOLIS PARKS DEPARTMENT LANDSCAPE ARCHITECTURAL
RECORDS 1898-1988
DRAWINGS + DOCUMENTS ARCHIVE, BALL STATE UNIVERSITY

1937, [HTTP://MAPS.INDY.GOV/MAPINDY/](http://maps.indy.gov/MapIndy/)

1956: The park is depicted in the original location on a Sanborn map and MapIndy aerial views.



1956, [HTTP://MAPS.INDY.GOV/MAPINDY/](http://maps.indy.gov/mapindy/)

1968-1971: I-65 interchange construction. Whether the park was relocated to 2014 location during this phase is unknown.

1978: Interstate complete, as per MapIndy aerial view, and a green space at the park's current location is discernable.



1978, [HTTP://MAPS.INDY.GOV/MAPINDY/](http://maps.indy.gov/mapindy/)

RESOURCE LINKS

INDIANAPOLIS PARKS DEPARTMENT LANDSCAPE ARCHITECTURAL RECORDS 1898-1988
(BALL STATE UNIVERSITY DRAWINGS + DOCUMENTS ARCHIVE)

This collection is not digitally available through the archive website, but the 1936 plan pictured throughout this document follows on the next page.

Catalog no. 40-113 Storage code(s) OVB bx
Project title: Ringgold playground
Location: Indianapolis, Marion Co., IN
Authorship, year: 1936
Records >> Working dwg. -- 1 sheet: ink on vellum; 16 x 22 in

Parks Collection Guide:

http://cms.bsu.edu/-/media/WWW/DepartmentalContent/Library/DrawingsDocs/CollectionGuides/DADA%2040_IndianapolisParks_CollectionGuide_2012.pdf

Online database to search Drawings + Documents Collections:

<http://www.bsu.edu/libraries/dda/index.php>

AERIAL PHOTOGRAPHY (CITY OF INDIANAPOLIS AND MARION COUNTY)

<http://maps.indy.gov/Mapindy/>

Selected desired year and pan to the Ringgold area.

INDIANAPOLIS SANBORN MAPS (IUPUI CENTER FOR DIGITAL SCHOLARSHIP)

Collection home: <http://ulib.iupui.edu/digitalscholarship/collections/sanbornjp2>

Indianapolis Sanborn Map #144, 1915

<http://indiamond6.ulib.iupui.edu/cdm/singleitem/collection/SanbornJP2/id/2158/rec/5>

Indianapolis Baist Atlas Plan # 19, 1916

<http://indiamond6.ulib.iupui.edu/cdm/singleitem/collection/SanbornJP2/id/1840/rec/1>

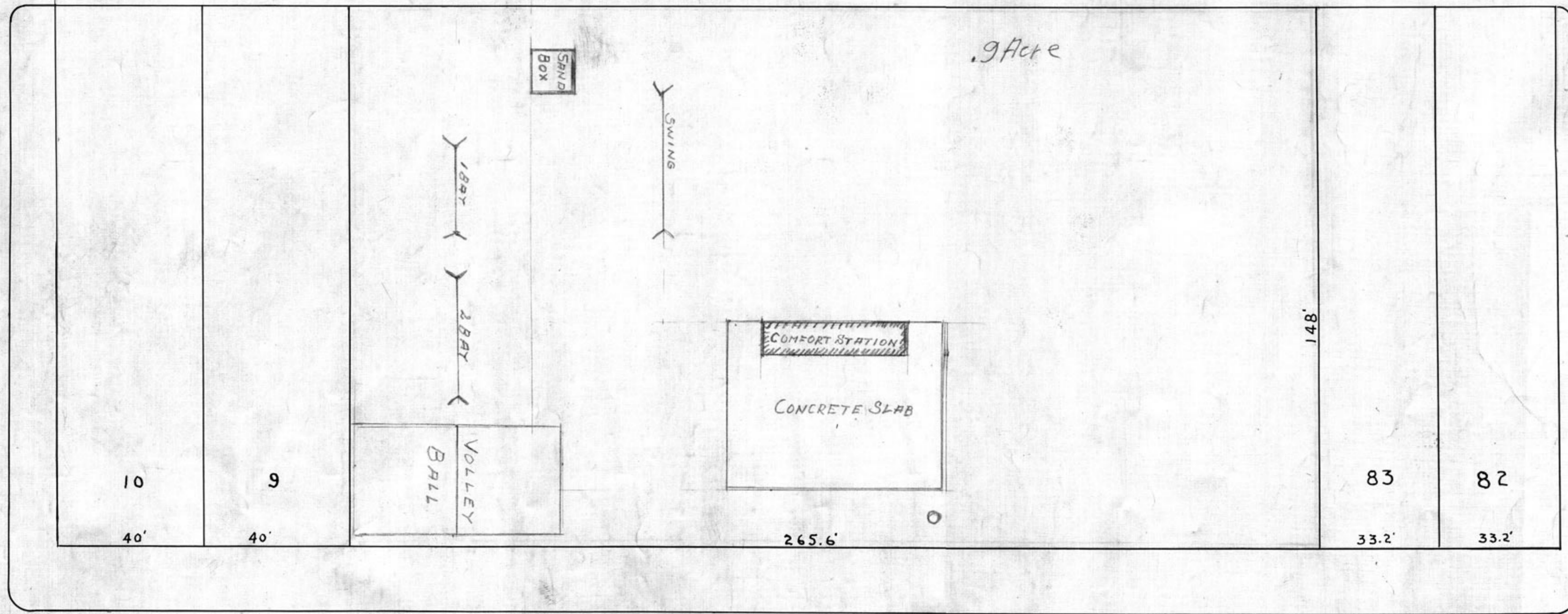
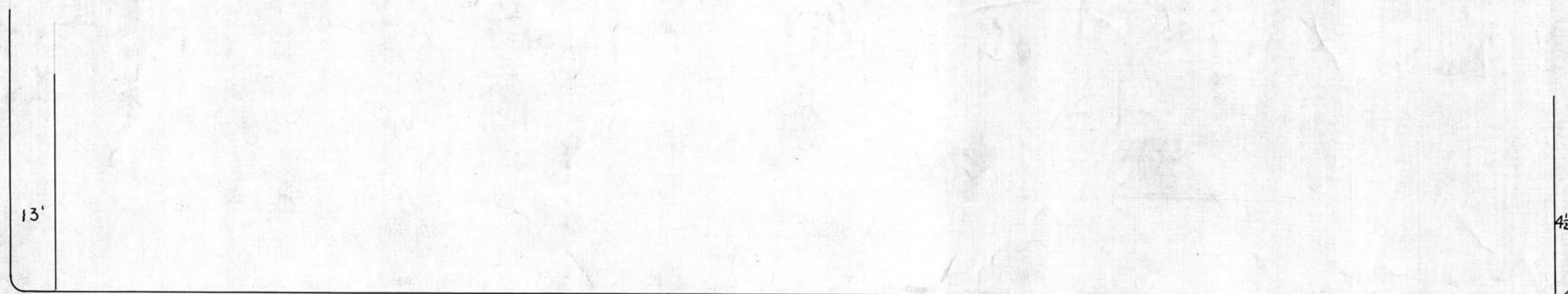
Indianapolis Baist Atlas Plan # 19, 1927

<http://indiamond6.ulib.iupui.edu/cdm/singleitem/collection/SanbornJP2/id/1863/rec/2>

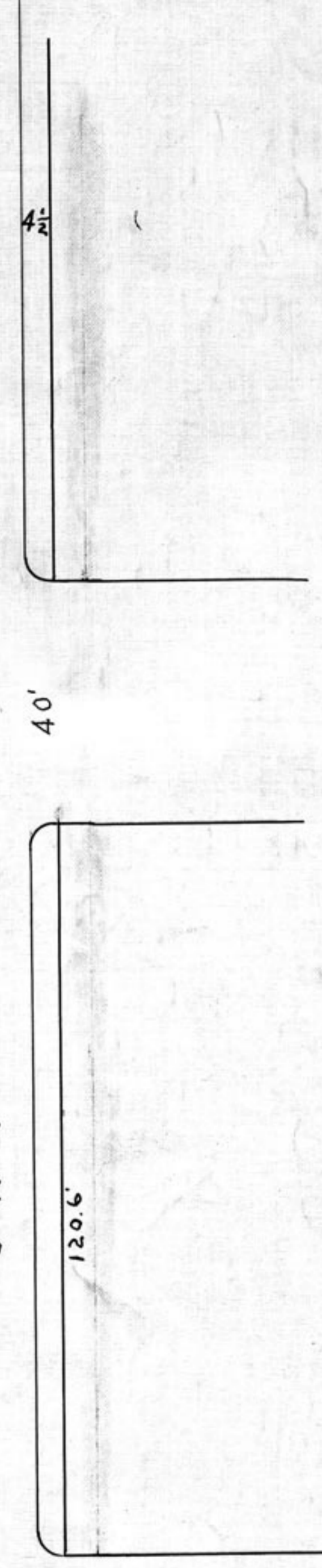
Indianapolis Sanborn Map #144, 1956

<http://indiamond6.ulib.iupui.edu/cdm/singleitem/collection/SanbornJP2/id/2059/rec/6>

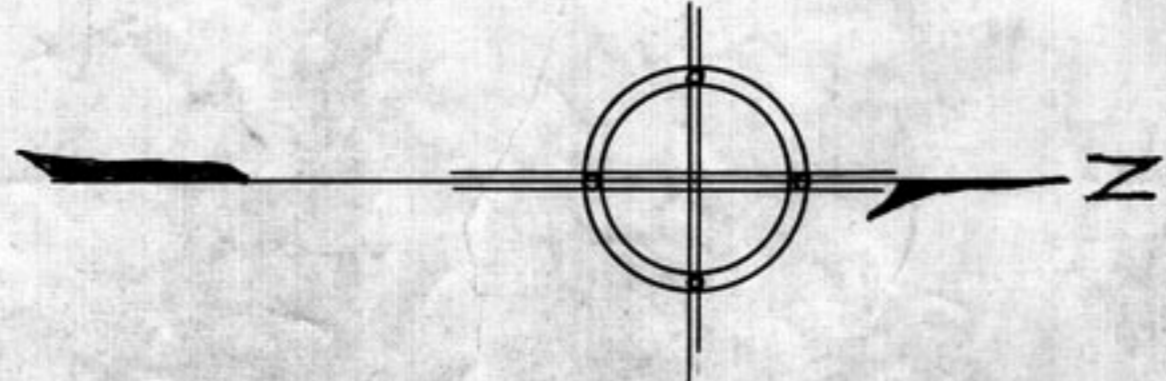
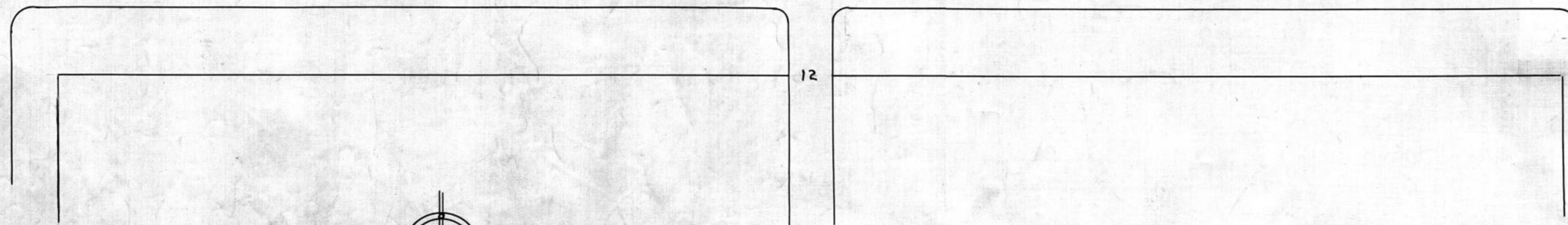
COTTAGE AVE.



ORANGE ST.



RINGGOLD AVE.



PLAYGROUNDS RINGGOLD AVE.

SCALE 1" = 30'

BOARD OF PARK COMMISSIONERS
INDIANAPOLIS, IND.

J-20

G-16

J-20

3-25-36