



The Diamond

A publication of Lambda Sigma National Sophomore Honor Society

INSIDE THIS ISSUE

- Chapter Presidents Convened at University of Toledo**
page 2
- Chapter Awards Announced**
page 3
- Gift of Honor**
page 3
- Ruth Knights Outstanding Advisor Named**
page 4
- National Scholarship Recipients**
page 4
- Lambda Sigma Welcomes New Chapter at Minnesota State University – Mankato**
page 6
- Scholarship Donation Challenge**
page 6
- Updates from Chapters**
page 7
- Service within the Chapters**
page 9
- Upcoming Deadlines Chapter Roster National Directory**
page 12

President's Message

A huge thanks from the national board for a fabulous presidents' conference at the University of Toledo. Accolades to the Alpha Psi chapter and their advisor, Jim Zubricky, for a job well done. It was fun seeing so many friendships made, and the meetings were filled with students sharing ideas on service projects and fundraisers as they tackled the tough questions of attendance and keeping up their chapter's spirit and enthusiasm throughout the year. The national board felt very honored to learn from the convention evaluations that the students thought the most helpful part of the conference was meeting with their board liaison.

I would like to share with you a passage I quoted from a speech by Mother Theresa. It's about leadership and the courage it takes to make a difference and follow your dream. Perhaps you can use it at a meeting or your initiation ceremony.

"People are often unreasonable, illogical, and self-centered. Forgive them anyway. If you are kind, people may accuse you of selfish, ulterior motives. Be kind anyway. If you are successful, you will win some false friends and true enemies. Succeed anyway. If you are honest and frank, people may cheat you. Be honest and frank anyway. What you spend years building, someone could destroy overnight. Build anyway. If you find serenity and happiness, people may be jealous. Be happy anyway. The good you do today, people will often forget tomorrow. Do good anyway. Give the world the best you have, and it may never be enough. Give the world the best you've got anyway. You see, in the final analysis, it was never between you and them anyway." ♦



Jane Price Harmon
National President

Congratulations – Lambda Sigma Honor Chapters

Honor chapters are selected by the national executive board for excellence and achievement. Requirements these chapters must fulfill to be considered include: completion of all reports (mid-year status report, ritual report and annual reports by the president, treasurer, and advisor); completion of all rituals in accordance with chapter and national guidelines; submission of the Initiate List along with payment of all required fees; submission of an article to at least one issue of *The Diamond*; evidence of campus and community service, minimum contribution of \$50.00 to the national scholarship fund; electronic submission of current bylaws by November 1st; implementation of a chapter

project consistent with the national service project, underprivileged and at-risk-youth, and attendance at the presidents' conference.

Congratulations to the following chapters on receiving this high honor:

- Alpha** – University of Pittsburgh
- Zeta** – Muskingum
- Eta** – Carnegie Mellon University
- Iota** – University of Mississippi
- Lambda** – Westminster College
- Omicron** – Northern Illinois University
- Pi** – Auburn University
- Rho** – Thiel College
- Mu** – Eastern Kentucky University
- Tau** – University of Kansas.
- Chi** – Louisiana Tech University
- Omega** – Pittsburg State University
- Alpha Gamma** – Duquesne University
- Alpha Delta** – University of Southern Mississippi
- Alpha Eta** – Behrend College

(continued on page 2)

(continued from page 1)

Alpha Theta – Slippery Rock University

Alpha Iota – Mississippi State University

Alpha Lambda – D'Youville College

Alpha Mu – Berry College

Alpha Pi – Lawrence University

Alpha Sigma – Gannon College

Alpha Tau – Alabama University

Alpha Psi – University of Toledo

Beta Delta – Middle Tennessee State University

Beta Epsilon – Washington University

Beta Eta – Pace University – Pleasantville Campus

Beta Mu – Alvernia University ♦

Chapter Presidents Convene at University of Toledo

This year the Lambda Sigma presidents traveled to Toledo, Ohio. The *Alpha Psi* chapter welcomed all delegates on September 20th for a weekend of learning, sharing, and fun at the 2013 National Lambda Sigma Presidents' Conference.

Some delegates were met at the airport in Detroit while others drove to Toledo. Activities began Friday night with a welcome and were reminded of the schedule for Saturday's sessions.



T-shirt exchange.

Then everyone participated in a service project that is very special to *Alpha Psi* chapter. Jangus Whitiker, a former president, discussed how this project came about several years ago and has continued to grow.



Filling lunch sacks with sandwiches, chips and cookies.



Making PB & J sandwiches.

but more importantly, give students the ability to spark up conversations with people they normally do not talk with,



Working together to make sack lunches.

Delegates were able to prepare approximately 150 PB & J lunches including sandwiches with chips and cookies. After completing the service project presidents participated in some ice-breakers and visited with one another about ideas to incorporate into their own chapters before heading back to the hotel.



Jangus Whitner, one of the founders of Bridge Club.

Saturday morning began with breakfast and an official welcome and roll call of the chapters. The opening session began with announcements from national board members. Board liaisons were announced and then the presidents and board liaisons divided into groups. This served as an opportunity for the presidents to learn and share their thoughts and questions concerning the ritual, service and fundraiser projects, attendance policies, reports, bylaws, leadership issues, and much more. Wilton Jackson and Taylor Arnold, the student representatives, followed with an explanation on the purpose of student representatives on the board and encouraged the delegates to consider running for this position. Nominations for this position were made before breaking for lunch and then a campus tour. The afternoon session then began with Mark Shotwell leading discussions on questions from presidents, which may have not been discussed in the earlier sessions with board liaisons. Election of the student representative then followed.



The "bow tie" men.

The closing banquet was held Saturday evening. Awards were announced and honor chapter certificates were presented. The Outstanding Chapter

Award was presented to *Alpha Sigma* chapter at Gannon University. The Most Improved Chapter was *Chi* chapter from Louisiana Tech University. The Ruth Knight Outstanding Advisor Award recipient was Nicholas Christian from Urbana University. Finally the Gift of Honor was presented to Mark Kidd. At the conclusion of the banquet it was announced that Marybeth Bond from Ferrum College was elected the new student representative. She will serve a two-year term on the national board.

At the conclusion of the banquet everyone participated in an interactive leadership activity led by Jennifer Rock. Students not only learned more about leadership, but had a fun time doing so!

Sunday morning came early for most delegates as the bus departed for the airport to take everyone back to their respective chapters with many new ideas in hand. ♦

Chapter Awards Announced

Most Outstanding Chapter Award and the Most Improved Chapter Award were announced at the closing banquet at the presidents' conference. These awards were for the 2012-2013 year. The Most Outstanding Chapter Award was presented to *Alpha Sigma* at the Gannon University. The Most Improved Chapter Award went to *Chi* at Louisiana Tech University

The *Alpha Sigma* chapter has consistently been an honor chapter with high visibility on campus and involvement in numerous service opportunities both on campus and in the community. This resulted in the chapter receiving Gannon's 2012-2013 Outstanding Club of the Year Award, as well as their advisor, Nancy Kujawinski, receiving Gannon's Outstanding Advisor Award. Many of *Alpha Sigma's* service projects centered on the national theme of serving underprivileged and at-risk-youth. One project, Cupcakes for Kids, involved raising money and interacting with the children at Erie's Children's Advocacy Center. During National Children's Abuse Month the members again raised money for the Children's Advocacy Center by making and selling blue ribbons. The chapter formed a relationship with this center that will result in the chapter continuing to work with them for years to come. They also volunteered at the Art House and MLK Center helping at-risk-youth with their homework and hope to continue this project as well. In addition to serving underprivileged and at-risk-youth and their campus involvement, the chapter reached out to the community by initiating new projects. Some of these included making survivor flowers for the Pink Zone Basketball game during Breast Cancer Awareness Week and participating in Gannon's Relay for Life raising \$633. Members also made

nominations for Professor of the Semester and the entire sophomore class voted on the selection for fall and spring. Executive board members attended Gannon's Gold Conference for campus leaders and were proactive in soliciting funds from SGA to assist with projects and enhance the initiation banquet at the end of the year. Advisor Nancy Kujawinski stated, "We are so humbled and honored to receive the 2013 Outstanding Chapter Award. The students are very proud of everything they accomplished in 2012-13. They certainly raised the bar for their successors and were an outstanding group to work with."

The *Chi* chapter at Louisiana Tech University is certainly deserving of the Most Improved Chapter Award for their efforts in re-building the chapter to a thriving organization on campus. Although the chapter membership had been low the past couple of years that did not hinder *Chi* from having a successful year in 2012-2013. A point system was instituted that fostered increased attendance at meetings and events. The chapter's focus was on participating in meaningful projects and increasing their membership during the membership selection process. They were successful with both goals. They participated in the Big Event, a campus cleanup project, as well as worked with underprivileged and at-risk-youth at the local Boys and Girls Club. They were actively involved in the fight against muscular dystrophy by raising money for the cause and participating in at he local walk. Relay for Life was another cause members supported. The chapter was represented at all major campus activities and partnered with the Society of Women Engineers and National Society of Black Engineers in a recycling project. In order to become more visible to the first year students they hosted a barbecue for prospective members and assisted in Dawg Haul, which helps freshmen move into the residence halls. Louisiana Tech University's *Chi* chapter will continue to strive for excellence while making a difference on campus, in the community, and in the lives of the students. ♦

Gift of Honor

The 2013 recipient of the Gift of Honor was announced at the National Presidents' Conference in September.

Mark Kidd received this award which is the highest honor given by Lambda Sigma Society. This marks the eleventh time this honor has been bestowed on an individual since it was first given in 1980. Kidd has served Lambda Sigma in many ways. This includes having served as a national board member from 2009-2013, as advisor for 2 chapters, and as one of the individuals instrumental in chartering the *Beta Kappa* chapter at George Mason University. Prior to serving as advisor at George Mason he also served as advisor at Ole Miss where the chapter consistently received honor chapter.



Janice Price Harmon presenting Gift of Honor plaque to Mark Kidd.

After receiving a bachelor's and master's degree from the University of Southern Mississippi, Kidd then served in the

student affairs division at the University of Alabama and the University of Mississippi. While at Ole Miss he also received a doctorate in educational leadership. His career path then took him to Virginia where he had positions at George Mason University before becoming dean of students in 2010 at Northern Virginia Community College – Manassas Campus where he is currently employed.

Throughout his career he has attended several institutes and has been involved in numerous professional organizations, taking leadership roles in the Southern Association of College Student Affairs (SACSA). He has also served on many institutional committees, made many presentations, as well as published numerous articles. Several of his awards have included University of Mississippi Chancellor's Diversity Award, the SACSA Howard Davis, Sr. Outstanding Service to Association Award, and the University of Southern Mississippi undergraduate Hall of Fame.

Kidd's presence made a difference both as an advisor and on the national board. He will be remembered as a strong student advocate and his expertise and perspective in higher education that he brought to the national board. ♦

Ruth Knights Outstanding Advisor Named

Nicholas Christian was named the recipient of the 2013 Ruth Knights Outstanding Advisor of the Year in October at the Lambda Sigma Society's Presidents' Conference at the University of Toledo. Christian is a graduate of Taylor University where he received a Bachelor of Arts in Christian education and an Associate of Arts in business administration. He then attended Ball State University where he



Nicholas Christian

received a master's degree in student affairs administration in higher education. He has served as director of Career Services at Urbana University for eight years and has served as the advisor to the *Beta Theta* chapter since it was chartered in 2006. Christian has been involved in numerous professional associations as well as civic engagement including the Champaign County Chamber of Commerce where he currently serves as president on the board of directors.

The national board was delighted to bestow this honor on Christian. His consistent leadership has made *Beta Theta* a strong and viable chapter. He is a hands-on advisor who has high standards and expectations for the chapter, and he is committed to helping the students he works with to achieve their goals. Christian was more than deserving of being named the Lambda Sigma Outstanding Advisor for 2012-13. ♦

National Scholarship Recipients

The 2013-2014 national scholarship recipients are: Wilton Jackson, **John Yocca Scholarship**, from the University of Southern Mississippi; Emily Kenney, **Pat Watt Scholarship**, from Washington University; Rachel Quillin, **Emily Taylor Scholarship**, from Berry College; Amanda Ghosh, **Thyrsa Amos Scholarship**, from Pace University-NYC Campus; and Michael Giffin, **National Board Scholarship**, from Northern Illinois University.

Wilton Jackson

a junior broadcast journalism major, is from Jackson, MS. His involvement at the University of Southern Mississippi



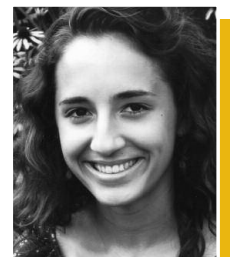
Wilton Jackson

exemplifies the four pillars of Lambda Sigma – leadership, scholarship, service, and fellowship. As a true scholar he has maintained a 3.89 overall grade point average while a member of the prestigious Honor College. He has not only been involved in campus life, but has held major leadership roles in numerous organizations. He served as president of Lambda Sigma and currently serves as

junior advisor and student representative on the national board. “In so many ways Lambda Sigma has impacted my life. It allowed me the opportunity to fellowship and bond with members, to embrace the true concept of scholarship amongst other highly qualified scholars, to provide an opportunity for me to lead an extraordinary group of talented students on a local and national level, and to create a tremendous impact on the Southern Miss and Hattiesburg communities through various outreach initiatives,” stated Jackson. Other involvements on campus with leadership roles have included Student Government Association Judicial Board as vice chairman, Phi Eta Sigma as vice-president, Gamma Beta Phi as secretary, Kappa Alpha Psi Fraternity as exchequer, and the Legacy Alumni Association as a student board member. He also currently serves as a reporter for the yearbook staff, a resident assistant, and a member of the elite group, Southern Style – the official campus hosts. Jackson's numerous leadership roles and accomplishments resulted in him being selected as Southern Miss' Most Outstanding Freshman Male. As a result of his commitment to service Jackson was selected as a Luckyday Citizenship Scholar. The director of this program states, “I have worked with over a 1000 students in my career and I would place Wilton among the top few for initiative, positive attitude, and respectfulness. While his professional and humanizing attitude set him apart, he also works hard at his studies. He has made and

continues to make an impact on the Southern Miss campus and Hattiesburg community.” Upon graduation, Jackson plans to pursue a career as a sports reporter after attending graduate school.

While pursuing a degree in biomedical engineering **Emily Kenney** has maintained a 3.66 grade point average at Washington University. While



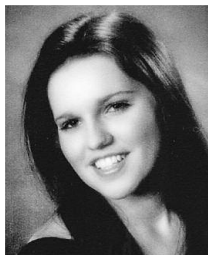
Emily Kenney

growing up in an air force family Kenney moved often and had the opportunity to meet a variety of people and experienced many different cultures. The one consistent variable she noticed was her passion for service. As she developed an interest in science and math in each of the schools she attended, she wanted to find an area that would allow her to continue her passion for service. She states, “When I discovered the specific field of biomedical engineering, I felt that all my passions were summed up in this area of study. Not only could I utilize my skills in math and science, I would be able to serve the world around me by advancing medical technology and directly improving lives.” At Washington University she has found many opportunities to embrace from research in biomechanics to summer programs. Kenney is also an active member of Medical Equipment Restorers In Training,

which restores medical equipment that is no longer functional so that developing countries such as Kenya and Honduras can benefit from this technology. She serves as a mentor for St. Louis female youth who are interested in someday being leaders in science and engineering, a course assistant in a freshman engineering seminar course, and a representative of the university for interactions with prospective freshmen. Outside of her field of study she has also been involved on campus. In Lambda Sigma she served as internal vice-president as well as communications and publicity chair. She was instrumental in organizing Random Acts of Kindness on campus, organized a benefit night and other fundraisers for a children's medical center, and was team captain for Relay for Life raising over \$1,000 for the Cancer Society. Kenney has also been active in the Catholic Student Center serving as a welcome team leader, and was one of only two recipients selected from undergraduate or graduate applicants for the Young Catholic Scholar award. Kenney's career goals include enhancing the lives of individuals around the world through the creation and innovation of advanced medical technologies.

Rachel Quillin is

pursuing a double major in a biochemistry and history. She has maintained a 3.91 grade point average at Berry College and recently was inducted into Phi Kappa Phi National Honor Society. She is also a member of Phi Alpha Theta History Honor Society, a member of the Presidential Ambassadors, and Allied Health Club. Serving as president of Alpha Mu chapter of Lambda Sigma, Quillin demonstrated outstanding leadership and served as an excellent role model for community service through her work with the Open Door Children's Home, a safe residence for abused and neglected children. She began tutoring the children but quickly noticed a common characteristic of low self-esteem and lack of basic reading



Rachel Quillin

comprehension. This drove her to spend more time and personal resources to develop a literacy program. She began organizing activities and providing prizes to foster a positive environment and to generate excitement for reading and discussion. Wanting the children to live a fuller life, with greater self-esteem, confidence, and the ability to connect with others she created this program and is now soliciting money and books from the Berry community. Quillin serves as an ambassador for these girls to everyone she meets. As stated by Jeremy Worsham in his letter of recommendations, "Rachel is one of the most remarkable young women that I have ever met. Her vibrant personality and uplifting attitude is a blessing to her fellow coworkers and me. She never fails to encourage others and lift up their spirits, even when she may be struggling herself. Everyday Rachel puts the welfare of others before herself, and truly exemplifies Berry College's motto – not to be ministered unto, but to minister, more than any student that I have ever met." Upon completion of her undergraduate degrees Quillin plans to pursue a medical degree and a career in alternative medicine. She is particularly interested in adopting a holistic approach to the body to more effectively treat the increasingly complex medical conditions and diseases plaguing our population. She also plans to continue her efforts in working to better her community, especially through helping disadvantaged children.

Amanda Ghosh

has maintained a 3.76 grade point average while pursuing a double major in women studies and theatre arts-dance with a minor in arts management. She is also a student in the Pforzheimer Honors College at Pace University. Originally from San Diego she chose to attend college in New York City because of the unlimited opportunities available and the buzzing lifestyle. Once arriving in NYC she quickly became involved on campus and in the community. Elected



Amanda Ghosh

as vice-president of Lambda Sigma, she soon became the acting president. In her leadership role she organized numerous events and multiple fundraisers for the chapter's local charity, Prevent Abuse America. She also has held leadership positions in Kappa Delta Sorority including the assistant to the vice-president for membership, has served as a peer leader/mentor and teaching assistant for a freshman UNV 101 class, and has been involved in the Pace Water Bottle Alliance that raises awareness about the water crisis and the harmful effects of bottled water. During her summers she has interned at the La Jolla Playhouse, a prestigious regional theatre in San Diego where original plays are often Broadway bound. During this time she has gone above and beyond her duties as an intern and became involved with La Jolla Playhouse's CARE Program. This program provides teachers with the tools to integrate arts into the school curriculum, which plays a significant role in the positive growth of children. Her continued involvement has allowed her to take on leadership positions with this program. Her passion for theatre has led her career goals to include managing a theatre company dedicated to promoting social change. She sees theatre as a reflection of society. Ghosh states, "I have learned that theatre empowers people to change themselves and the world. Furthermore, I want to manage my own theatre company to use theatre performance and theatre education to portray what is happening in the world and society through an artistic lens."

As a physics and chemistry major at Pittsburg State University,

Michael Giffin

has maintained a 4.0 grade point average. His academic honors include being a member of the Honors College, Phi Eta Sigma Honor Society, recipient of the Outstanding Freshman in Chemistry Award, and recipient of numerous



Michael Giffin

(continued on page 6)

(continued from page 5)

scholarships. His love for science has led to his involvement in undergraduate research. As stated in a letter of recommendation, "Michael's ambition and great intellectual abilities so far have made him shine above the rest of his peers. In my opinion, Michael is one of the most exceptional students I ever had the pleasure to teach. He is bright, ambitious, and extremely mature." In addition to excellence in his academics

Giffin also has been involved in campus activities serving in several leadership positions. These activities include Student Government senator, Honors College Association peer mentor, and a member of Society of Physics Students, Chemistry Club, and Tennis Club. Serving as president of Lambda Sigma, *Omega* chapter received Honor Chapter this past year. His leadership was instrumental in the chapter building a relationship with the Family Resource

Center which supports the national service theme of underprivileged and at-risk-youth. For several months Giffin and other chapter members volunteered with children at the center. Then the chapter raised and donated \$400 to the Family Resource Center after the chapter's third Annual PSU's Got Talent successful event. After graduating Giffin plans to continue his education to earn a doctorate in materials science with the intent of teaching at the college level. ♦

Lambda Sigma Welcomes New Chapter at Minnesota State University – Mankato

In a warm, late summer evening in Mankato, Minnesota, the *Beta Nu* chapter of Lambda Sigma was installed on September 3, 2013, and 18 charter members were initiated as members in the presence of MSU-Mankato administrators and family members. Denise Rode, national



Installation cake.



Installation.

recording secretary and advisor to the *Omicron* chapter at Northern Illinois University, conducted an orientation session with the new members and presided at the initiation banquet and ceremony.



Installation.

Bringing Lambda Sigma to Minnesota State – Mankato was the idea of Vice President for Student Affairs & Enrollment Management David Jones, who worked first with past staff member Laurie Woodward, and more recently with Gregory Wilkins, to plan the installation and initiation. A student committee headed by chapter Vice-President Brian Viessman helped organize the event, which featured Minnesota wildflowers in the school and Lambda Sigma colors of gold and blue/purple, as well as a congratulatory cake. Jones provided a welcome for the event, Associate Director of the Centennial Student Union and Student Activities Greg Wilkins, Assistant Director of Greek Life John Bulcock, and Director of Recreation Todd Pflingsten participated in the ceremony. Chapter President Rebecca Wegscheid closed the event with remarks that expressed her excitement about, and her hopes for, the newest chapter of Lambda Sigma.

The national board and the other 39 active chapters of Lambda Sigma across the country, welcome *Beta Nu* to the Lambda Sigma family! ♦

Denise Rode
Installing Officer

Scholarship Donation Challenge

isted below are chapters who donated to the scholarship fund last year at the level indicated.

These chapters challenge all other chapters to make contributions during the 2013-2014 school year. Minimum scholarship donations of \$50 are required to be considered for honor chapter status. Congratulations to these chapters!

\$250 ♦ Diamond Level – Rho

\$150 - \$249 ♦ Gold Level – Alpha, Alpha Delta, Alpha Sigma

\$100 - \$149 ♦ Blue Level – Zeta, Eta, Mu, Alpha Lambda, Alpha Psi, Alpha Pi, Beta Eta ♦

LAMBDA SIGMA SOCIETY MISSION STATEMENT

Lambda Sigma Society, a national honor society for second year students, is dedicated to the purpose of fostering leadership, scholarship, fellowship and service among its members as they promote the interests of the colleges and universities they represent. ♦

Updates from Chapters



Alpha Chapter Recognized as Student Organization of the Year

The University of Pittsburgh (Pitt) caters to over 400 clubs and organizations run by its 28,766 undergraduate and post-graduate students. Every year, the Division of Student Affairs recognizes one of these numerous organizations as the sole Student Organization of the Year.

As described by the Office of Student Affairs, "The Student Organization of the Year Award recognizes one student organization that has excelled at making the University of Pittsburgh the best collegiate experience in the world through its programming, campus initiatives, service, and student engagement."

Eligible recipients of the distinguished award must complete an application including up to 2 letters of recommendation and must be an officially registered club of three or more years, having undergone additional leadership training offered through the university. Most importantly, each group's activities from prior years are disregarded during application review. By focusing on the academic year immediately preceding the award, organizations of all sizes and backgrounds have an opportunity to shine and be recognized for their achievements.

With only 40 active members, rising above over 300 qualified applicants, Lambda Sigma's Alpha chapter was the selected



Left to right: Dr. Patricia Beeson (Provost), Yaleh Asadi (Past President), Dr. Kathy Humphrey (Vice Provost and Dean of Students), Dr. Cheryl Finlay (Advisor)

beneficiary of this prestigious award for the 2012-2013 academic year. As Student Organization of the Year, Alpha chapter received the opportunity to send one chapter representative to the International Youth Leadership Conference (IYLC) in Prague, Czech Republic.

IYLC focuses on strengthening relationships and cooperation between cultures, by creating a network between the future leaders of the world. As a true personification of Lambda Sigma's four pillars of leadership, scholarship, fellowship, and service, chapter president of the 2012-2013 school year, Yaleh Asadi, was the obvious choice as a representative.

Asadi, a current junior studying finance, participated in the weeklong, biannual IYLC forum on world politics, international relations, law, media, business, and global economy in July of this past summer. More than 100 university students from over 35 countries participated – challenging their leadership skills, debating current issues, and realizing their leadership potential.

"While at the conference, I met young

leaders from various countries, and learned about the traits and characteristics needed to be a leader," Asadi said of her experience. "One particular representative stood out to me, her name was Basant Motawi. Basant started a movement in Egypt to empower women to speak up against corruption. From her I learned that a leader

must be fearless. We often hear ambitious, personable and intelligent used as traits to describe exceptional leaders, but the factor that distinguishes a true leader from a follower is the ability to look fear in the eyes and overcome it. Basant actively protested for her rights, and had to fear for her life. Here in the United States, our personal safety as vocal leaders is protected by the luxury and safety of freedom of speech, and the extent to which our courage is challenged is nowhere near Basant."

In the upcoming year, Yaleh challenges everyone to, "be fearless, and set goals that you know will be difficult to achieve, but will have a great return. The worst form of failure is the failure to try, out of fear"

From everyone at Alpha chapter, we wish you the best in all of your endeavors this year. Let us make this a great year for our chapters as intrepid young leaders. As Franklin D. Roosevelt so brilliantly summarized, "the only thing we have to fear, is fear itself." ♦

Rebekah L. Sayre
President

Zeta Member Embraces American Culture

Chandrika Misra is a very special member of the Zeta chapter of Lambda Sigma. She has all the qualities of a Lambda Sigma member, good standing in scholarship, service, and leadership. In addition to all of those things, Misra also is unique in that she is originally from New Delhi, India. Misra originally visited the United States twice before starting the process of applying for college as she really liked the environment here.

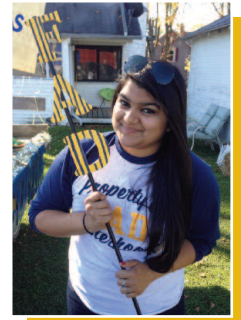
“There aren’t any legit differences between school in India and school in America that I can think of. The one difference I can point out is that Indian colleges do not have Greek Life, that’s just an American thing and I feel really

good about that fact that I get the best of both worlds,” said Misra.

She always wanted to study in another country. Her brother graduated from Muskingum University so she applied to Muskingum along with other colleges. The small college atmosphere as opposed to the thousands of students at the state colleges, appealed to her.

Upon her arrival at Muskingum Misra wanted to get involved and stay busy. It also proved to be a great way to get to meet new people. Misra is a member of Lambda Sigma, F.A.D. Club, Pi Phi Gamma Sorority, Multicultural Association of Students, Black Student Union and Circle K International serving as treasurer. Many of these groups allow her to participate in service. She has gone above and beyond in serving the community. Some of the service projects have been participating in are Clean Up New Concord, volunteering at the Beckett House (local nursing home),

working the soccer concession stands in Cambridge, cleaning up campus every Sunday, serving as a Crossing Guard during Halloween in Cambridge, and helping set up, tear down and run events. Her favorite volunteer work has been serving food at the Zanesville Christ’s Table. “It just feels good to serve the community and to give back in a whatever way I can,” stated Misra.



Chandrika Misra

Misra is so excited to be at Muskingum. It allows her so serve others while going to college. The experience has been phenomenal so far, academically and otherwise. “Hopefully the next two and a half years are as good as my time here so far,” stated Chandrika. ♦

Omicron Finds Opportunities on Campus for Leadership, Fellowship and Service

With enthusiasm and excitement, the Omicron chapter of Northern Illinois University has kept quite busy this semester. Beginning on a high note, members participated in several university-wide Welcome Days events, including helping incoming students move in, ushering for the president’s first address to freshman, and speaking to prospective Lambda Sigma

members at various organizational and college fairs.

At an especially memorable event, we were honored to host Dana Stover as the keynote speaker for our pinning ceremony. A business professor, advocate for sophomore involvement, and the wife of our new president, she shared her experiences, hopes, an interesting bag of spicy chocolates, and a corresponding story about seizing opportunities with us.

Driven forward with newfound inspiration and a tingling on our tongues, the Omicron chapter wasted no time getting involved throughout the community and university. We have participated in our standing tradition of ushering for the NIU theater

department and will continue to do so throughout the academic year. Most recently we had many members taking part in several homecoming activities such as the parade, the powder puff football game, the recycled boat race, and we even had two members that were on homecoming court.

We have many events scheduled throughout the rest of the semester. One exciting event that we have organized is a Lambda Sigma alumni tailgating event, so that Huskies, old and new, can share their experiences with each other. As you can see, our chapter has been busy so far this semester and still has many events yet to come. We are proud to be making connections with each other and throughout the university community. ♦

Honor Cords Available

Many chapters are now providing honor cords for their graduating seniors to be worn at graduation. If you are interested in ordering these blue and gold cords, you may do so by contacting the following company:

Schoen Trimming and Cord Co., Inc.
at
<http://www.cordsandtassels.com/products2.htm>
or
calling them at 212-255-3949. ♦

Service within the Chapters



Alpha Tau Embraces Servant Leadership

With the intention of continuing the tradition of excellence in leadership and devotion to service that the previous members of the Alpha Tau chapter established before us, we began work straight away. After refreshing our terms of membership and updating our chapter's goals for the year, the University of Alabama chapter eagerly delved into various leadership and service opportunities that presented themselves in the Tuscaloosa community.

During the first meeting of the year, members sponsored a canned food drive to assist area food banks and collected a total of 175 pounds of food, which was then donated to the Beat Auburn, Beat Hunger campaign. Also, during the meetings, our membership has been collecting clothing to be donated to Temporary Emergency Services to assist in the essential preparations of our community for emergency events.

Additionally, with October's National Breast Cancer Awareness Month, the University of Alabama chapter worked closely with a local restaurant, T-Burger, to create a fundraising event. A percentage of all proceeds spent at the Tuscaloosa favorite restaurant were donated directly to the National Breast Cancer Association so that we might be able to assist in the search for a cure.

Finally, after our president attended the 2013 National Lambda Sigma Presidents' Conference in Toledo, OH, we began working with various chapters in the southeast to promote cross-state

community service projects. With this in mind, we have opened a line of communication with the Mississippi State chapter to join them in assisting with the cleanup and preparation of an at-risk children's home as we continue to strive to emulate the national emphasis on under-privileged and at-risk-youth. We look forward to continuing to cultivate these relationships and grow stronger together.

The Alpha Tau chapter at the University of Alabama is extremely excited for the upcoming few months that are sure to be filled with outstanding opportunities for servant leadership and eagerly awaits the fruition of our partnerships with sister chapters of Lambda Sigma in the southeast. ♦

Maxton Thoman

Beta Eta Gives Back to the Community

Lambda Sigma's Beta Eta chapter had a Halloween party for a local children's home, The Pleasantville Cottage Schools. It is a foster home for children who are emotionally disturbed. The organization helps these children heal and learn to live in society. The school is not far from Pace University Pleasantville, and Pace does service events throughout the year with the school. One of the most successful events has been making homework kits for the children so they have back to school supplies. Unfortunately, the Pleasantville Cottage Schools does not have the money to buy supplies for all the kids, so they were extremely grateful and happy to have received their new supplies in September.

The Halloween party was a big success because it was something fun for everyone involved. As members we got to dress up and hand out candy, as well as spend time with the children, talking and coloring. The children enjoyed spending time with us, and enjoyed the candy and crafts they made. ♦

Alpha Sigma Partners with the Gannon Education Department

Our chapter partnered with the Gannon Education Department in support of both organizations' initiatives to assist underprivileged and at-risk-youth at the Martin Luther King Center. The center's mission is to improve the conditions of work, play, study, health and living conditions of the people in Erie. Lambda Sigma members tutored, read, played, and assisted the children and will continue to do so throughout the rest of the year. Halloween cards were made and delivered to the children during the October visits. ♦



Adam Wolf, Jessica Armstrong, Mary Stephens, Shaylyn Walberg and Ashley Chismar, officers who developed the relationship with the Martin Luther King Center.

Empty Bowls Raises Money for Hunger Relief

The Beta chapter of Lambda Sigma is doing a service project that we hope will become an annual tradition. Our chapter, with the assistance from Miami University Second Year Program, has purchased one hundred bowls from You're Fired. They will be painted and donated to Empty Bowls, which was initiated in 1990 by an art teacher from Michigan. He was looking for a creative way for his students to support a local food drive. The idea grew, and in the twenty-



Painting bowls.

three years since its inception, Empty Bowls has grown into an international event, raising millions of dollars worldwide for hunger relief. The Oxford Ohio local event has raised over \$43,000 for local efforts to alleviate hunger and food insecurity in our own community. At the Empty Bowls event, guests purchase a donated bowl for \$10 and they then receive soup for their bowl, salad, and a drink. Our donation of the bowls will allow the local Empty Bowls event to raise \$1,000.

Our chapter invited all freshmen to join us to paint the bowls. Then they were fired and donated to Empty Bowls. We hope that this project increased our visibility on campus while supporting a worthwhile cause. Hopefully, this project will become an annual event for our chapter. ♦

Beta Lambda Continues Relationship with Odum Home

In September, the Beta Lambda chapter volunteered at the Friends of Children workday event for the Odum Home, a Baptist children's shelter that cares for boys, girls, and single mothers and their children. With over a hundred volunteers from a variety of church affiliations, regions, and backgrounds, the event consisted of assigning tasks and chores to individuals in an effort to build better community ties and bonds with the Odum Home and the children in their care. Tasks included cooking, raking, window cleaning, housing cleaning, etc.

Early in the morning our members registered and as a group we were assigned to clear the lawn from tree branches and helping others groups to trim the bushes. Once finished with the tasks, some of our members played football with the children and helped them score a few touchdowns. Others members mingled with the volunteers and Odum Home staff such as Kathy Locklear, the residential service coordinator who introduced us to the event and got the Beta Lambda chapter involved. The workday ended with volunteers and the children sharing prayer and a delicious meal.

The event was such a great experience and gave us more determination to support and strength our relationship with the Odum Home that was created by the previous chapter. We plan to help through mentoring, tutoring, and in any way to make this an ongoing service project for future chapters. ♦

Sandra Torres
President



Beta members painting bowls.



Designing bowls.

Please visit the Lambda Sigma website at www.lambdasigma.org for additional chapter articles.

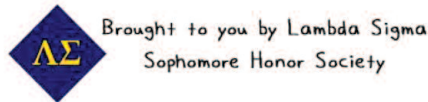
Beta Epsilon Washington University Honor Chapter

The Beta Epsilon chapter at Washington University in St. Louis is looking forward to some great programs this year! We launched a Smile Campaign, Lambda Sigma's effort to bring more smiles to our campus during midterms. We printed bright yellow business-sized cards with a large smiley face and "smile!" on one side, with instructions to pass the happiness along on the other. The idea is to spread happiness with the goal being to simply make someone's day a little brighter. The fifteen members of our chapter distributed them around campus and we can not wait to see them in the hands of others. This is a new project that we hope to continue to implement multiple times throughout the year; hopefully its success will establish it as a Washington University Lambda Sigma tradition for many years to come.

With Parents and Family Weekend quickly approaching, we are also looking forward to our cupcake fundraiser! Parents will be able to place orders for cupcakes for their students, to be delivered as a surprise on a later date. Ideally, this fundraiser will do more than raise money. It will bring happiness to students, as well as generate excitement

about Lambda Sigma within the freshman class. We are also excited to start volunteering with New Dimensions Soccer, a multicultural outreach program for children in St. Louis. We'll be volunteering in an afterschool program and teaching soccer skills to children in under-served communities with the goal of hoping them develop life skills. We can not wait! ♦

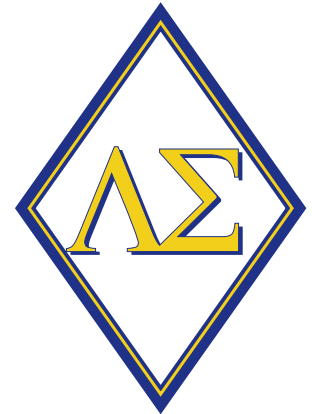
☺ Smile!
Pass it on!



Omega Chapter Serves Campus and Community

At Pittsburg State University, the Omega chapter of Lambda Sigma began the fall semester with a great start. Chapter members worked hard to fundraise on game days in Gorilla Nation. Partnering with the university athletics department, students sold football programs prior to and during the games – not only raising

money for the chapter, but also engaging with the community! During our Homecoming week on campus, our chapter hosted a canned food drive for the Wesley House, an emergency assistance outreach ministry and community food pantry for southeast Kansas. Student organizations competed in donating the most canned goods to earn homecoming points, and upon completion of the drive, our chapter delivered almost 1,000 cans to the Wesley House. Our members also planned a Halloween party for our international students on campus. Our goal of hosting this event was to introduce part of our culture with our international students, and to help them make connections with American students on campus. Games and treats were plentiful as the international students enjoyed themselves! Things are busy for the Omega chapter, but we are excited for what all this year will bring us! ♦



Diversity Statement

Inherent in the purposes and ideals of Lambda Sigma Society is the understanding of the importance of diversity within the organization in achieving its goals. To this end, the National Executive Board of Lambda Sigma Society encourages its member chapters to actively pursue candidates for membership who would broaden and strengthen the local chapters by providing diverse backgrounds. This diversity within the organization should serve to enhance the potential for leadership and service by acknowledging the wide range of students within the college or university and their potential to contribute to the goals of the society. ♦

Professor of the Month Mugs Available

Blue ceramic mugs with the Greek letters Lambda Sigma and "Excellence in Teaching" all in gold letters are available for \$7.50 each. Contact John Hauser, national vice president, to place your order. His contact information is listed on the last page of this newsletter. ♦

Upcoming Deadlines

JANUARY 31, 2014

Report on Rituals.....Neal Edman
Diamond Article.....Barbara Ross
Mid-Year Status Report.....Ron Wolfe

MAY 1, 2014

Scholarship Application.....Mark Shotwell

JUNE 1, 2014

President's Report.....Ron Wolfe

Treasurer's Report

Advisor's Report

Initiate List

National Dues (\$40/member)

Convention Assessment (\$350)

Scholarship Donation (Minimum Donation \$50 for Honor Chapter Status)

All reports and *The Diamond* articles are to be submitted electronically. Reports are located on the website. ♦

Lambda Sigma Chapter Roster

Alpha	University of Pittsburgh	Pittsburgh, PA
Beta	Miami University	Oxford, OH
Epsilon	Allegheny College	Meadville, PA
Zeta	Muskingum University	New Concord, OH
Eta	Carnegie Mellon University	Pittsburgh, PA
Iota	University of Mississippi	University, MS
Lambda	Westminster College	New Wilmington, PA
Omicron	Northern Illinois University	DeKalb, IL
Mu	Eastern Kentucky University	Richmond, KY
Pi	Auburn University	Auburn University, AL
Rho	Thiel College	Greenville, PA
Tau	University of Kansas	Lawrence, KS
Chi	Louisiana Tech University	Ruston, LA
Omega	Pittsburg State University	Pittsburg, KS
Alpha Gamma	Duquesne University	Pittsburgh, PA
Alpha Delta	University of Southern Mississippi	Hattiesburg, MS
Alpha Epsilon	Mansfield University	Mansfield, PA
Alpha Zeta	Texas A & M University	College Station, TX
Alpha Eta	Penn State Erie – The Behrend College	Erie, PA
Alpha Theta	Slippery Rock University	Slippery Rock, PA
Alpha Iota	Mississippi State University	Mississippi State, MS
Alpha Kappa	Georgia Institute of Technology	Atlanta, GA
Alpha Lambda	D'Youville College	Buffalo, NY
Alpha Mu	Berry College	Mt. Berry, GA
Alpha Pi	Lawrence University	Appleton, WI
Alpha Sigma	Gannon University	Erie, PA
Alpha Tau	University of Alabama	Tuscaloosa, AL
Alpha Phi	Ferrum College	Ferrum, VA
Alpha Psi	University of Toledo	Toledo, OH
Alpha Omega	Westfield State College	Westfield, MA
Beta Gamma	University of Pikeville	Pikeville, KY
Beta Delta	Middle Tennessee State University	Murfreesboro, TN
Beta Epsilon	Washington University	St. Louis, MO
Beta Zeta	Pace University – NYC Campus	New York, NY
Beta Theta	Urbana University	Urbana, OH
Beta Eta	Pace University – Pleasantville	Pleasantville, NY
Beta Kappa	George Mason University	Fairfax, VA
Beta Lambda	University of North Carolina – Pembroke	Pembroke, NC
Beta Mu	Alvernia University	Reading, PA
Beta Nu	Minnesota State University – Mankato	Mankato, MN

National Address Directory

NATIONAL PRESIDENT

Jane Price Harmon
 126 Seventeenth Street
 Atlanta, GA 30309
 (404) 892-2491 – home
 harmonjane126@gmail.com
 Chapters: Zeta, Alpha Epsilon,
 Alpha Mu, Alpha Pi, Beta Kappa

PRESIDENT ELECT

Denise Rode, Ed.D.
Northern Illinois University
 Director, First and Second Year
 Experience
 Chick Evans Field House, Room 101
 (815) 753-67881 – office
 (815) 751-8256 – cell
 email: drode@miu.edu
 Chapters: Pi, Tau, Alpha Zeta, Alpha Tau,
 Alpha Psi

VICE PRESIDENT

John Hauser
 58 Eagle St.
 Greenville, PA 16125
 (724) 588-2474 – home
 (724) 456-4066 – cell
 jhauser@thiel.edu
 Chapters: Alpha, Alpha Theta, Alpha
 Omega, Beta Zeta, Beta Eta, Beta
 Lambda, Beta Nu

RECORDING SECRETARY

Ashley Elsasser
 132 Harding St.
 Chapin, SC 29036
 (803) 345-1720 – home
 aesasser@ss.rr.com

EXECUTIVE SECRETARY

Ron G. Wolfe
 108 Westside Dr.
 Richmond, KY 40475
 (859) 623-5088 – home
 Ex_sec@yahoo.com
 Chapter: Omicron, Beta Delta

TREASURER

Jason Sharp
 225 Ferrum Mt. Rd.
 Ferrum, VA 24088
 (517) 290-5447 – cell
 jsharp@ferrum.edu

COORDINATOR AT NATIONAL CONFERENCES & MEETINGS

Linda Fuerst
 Lawrence University
 Volunteer Coordinator
 711 E. Boldt Way SPC 17
 Appleton, WI 54911
 linda.m.fuerst@lawrence.edu
 (920) 832-6853 – office
 (920) 731-8937 – home
 (920) 475-8067 – cell
 Chapters: Lambda, Alpha Phi,
 Beta Gamma, Beta Theta, Beta Mu

EDITOR

Barbara Ross
 106 Rhodes Dr.
 Hattiesburg, MS 39402
 (601) 297-5947 – cell
 Barbara.Ross67@hotmail.com
 Chapters: Iota, Mu, Chi, Alpha Delta,
 Alpha Iota, Alpha Kappa

ADVISORS

Mark Shotwell – Scholarships
 Slippery Rock University
 Department of Biology
 Slippery Rock, PA 16057-1326
 (724) 738-2476 – office
 (724) 372-3082 – cell
 mark.shotwell@sru.edu
 Chapters: Beta, Eta, Omega, Alpha
 Gamma, Beta Epsilon

Neal Edman – Rituals

Vice President and Dean of
 Student Affairs
 Westminster College
 Market Street
 New Wilmington, PA 16172
 (724) 946-7110 – office
 (724) 813-6462 – cell
 nedman@westminster.edu
 Chapters: Epsilon, Rho, Alpha Eta,
 Alpha Lambda, Alpha Sigma

Amy Fountain – By-laws

Instructor
 Department of Communication
 Mississippi State University
 P.O. Box PF
 Mississippi State, MS 39762
 (662) 325-3320 – office
 (662) 312-0200 – cell
 afountain@comm.msstate.edu

MEMBERS-AT-LARGE

Terri Mando
 Penn State Erie, The Behrend College
 Assistant Director for the Academic &
 Career Planning Center
 125 Reed Union Building
 4071 College Drive • Erie, PA 16563
 (814) 898-6612 – office
 (814) 449-2199 – cell
 tbm10@psu.edu

STUDENT REPRESENTATIVES

Wilton C. Jackson, II
 118 College Dr. # 7453
 Hattiesburg, MS 39406
 (601) 291-5798
 wilton.jackson@eagles.usm.edu

Marybeth Bond

MSC 2615
 P.O. Box 1000 • Ferrum College
 Ferrum, VA 24088
 (301) 467-1559 – cell
 mbond@ferrum.edu

Website:

<http://www.lambdasigma.org>

Distribution Lists:

LSPresidents@yahoo.com
 LSAdvisors@yahoogroups.com