



ASKING PA'S CONSENT.

"Parson" Crawford and his son JN (see pages 26-28)

**April
2013**

50p

This month
A eulogy for Honey
Parish Profile: Annie Slade
The Cricketing Crawfords

Scallywags



Parents & Toddler Group
Tuesdays 10am-11.45am
in the Church Hall
toys & crafts
for children up to 0-3 years
£3 per session
including refreshments
Come & make new friends
For more information
call 8542 3427

Military Whist Drive

Mon 8 Apr

7.45pm



Visitors Welcome

THE LONDON MARATHON—a message from Simon Cheetham

I am running the London Marathon on Sunday 21 April and I am raising money for MIND, which is a wonderful charity that helps those affected by mental health problems. In these days of less and less funding for mental health care, charities such as MIND become more and more important. Like so many people, we have someone close to us who battles with mental health, but whose struggles and achievements are an inspiration. At the same time, we know how hard and destructive mental illnesses will be for those affected, their families and friends. Raising money for MIND is a very small way of helping. This will be my fifth London Marathon and my twelfth marathon to date (the majority run with David Reeves, who has also been keeping me company in those long training runs). Believe me, they get no easier, but I'm looking forward to what I hope will be a very special day. The best way to sponsor me is to go to my Just Giving page at: uk.virginmoneygiving.com/SimonCheetham

For those less technically accomplished, an old-fashioned sponsorship form will appear in the church porch nearer to the date. Thank you so much for your interest and generosity.

Editorial



I begin this month with an apology. As the most sharp-eyed among you will have noticed, 31st March dropped off the bottom of the Prayer Calendar last month: my apologies to Brenda. And if you get your copy of the magazine in time, on 31st March (Easter Sunday) you are asked to pray for joy for the world.

Chris Abbott

**Copy date for next
issue: 10th April**



Editor: Chris Abbott 8286 8099 chris.abbott@kcl.ac.uk

Prayer Calendar: Brenda Richards 8540 4769 eric.brenda@therichards.home.net

Printing: Margaret Plastow 8542 2904 **Proof Editor:** Joyce Clay

Advertising Manager: Doris Dean 8542 3972 ddean756@btinternet.com

**The Parish Magazine is published monthly by St Mary's Church Merton,
Church Path, SW19 3HJ**

Communications Coordinator: Sarah Quick

Parish Office 8542 1760

Opening hours (enquiries, weddings and banns): Mon to Fri 8 to 12.

Outside these hours by appointment

Email: office@stmarysmerton.org.uk Web: www.stmarysmerton.org.uk

CartoonChurch.com cartoons by Dave Walker originally appeared in Church Times.

Vicar's letter



TRIBUTE TO HONEY HONEYSETT

Churchwarden from April 2011

As delivered at her Memorial Service
on Saturday 16th February 2013.

With thanks to Joyce Clay for typing.

The most eloquent of tributes to Honey or Pat must be the number of us all here today. So many interests and her circle of friends so wide! We all owe a debt of gratitude to Ruby – Honey's lifelong friend, to Jane Irving and to Penny who ensured word reached everyone so that perspectives could be included in this Tribute.

I begin with one of two of her achievements which Honey told me herself gave her greatest pride, serving the Crown, Queen, and country. Joining the Special Constabulary of the Metropolitan Police in 1966, Honey served for 30 years, and rose to the equivalent rank of Inspector as Charing Cross Divisional Officer, where she impressed the Deputy Assistant Commissioner with her professional organization. As was the case one day on duty outside Buckingham Palace when Honey was controlling the crowds, which on this particular day were especially hectic and not really co-operating too well. With only a few officers they were rather thinly spread so Honey made her way towards a mounted policeman she knew and asked him if he had some peppermints. He did and obliged which Honey fed to the horse and he loved them. The result was it moved towards the crowd and began to foam at the mouth, tossing its head and spraying anyone in its path with white foam and a result was achieved – a rapidly cleared pathway and the crowd got back behind the barriers out of range of a very large foaming black horse and its grinning rider on its back.

Honey was responsible for various ceremonial occasions including another story as Ruby recalls with much laughter, an encounter with an official limousine that was attempting to drive through Horse Guards Parade one Tuesday evening when Honey was entrusted to ensure no traffic passed that way. Raising her hand and stopping the car, the window was lowered and while talking with the chauffeur there was a tapping on the window behind the driver saying "co-ee, co-ee it's me!" which revealed it was the Prime Minister en route to her Tuesday audience with the Queen – needless to say, there was a smart step back, a crisp salute and Margaret Thatcher got to the Palace!

Our present local officer, Sergeant Harman pays tribute to Honey's record of service, humility, and discretion, ever willing to liaise over local policing issues – that is when she wasn't riding a bike through the Glebe selling ice creams!

Honey was awarded a long service Police Medal on display here amongst this arrangement created by Sheila, Anita and Patrick – the medal and its background will be displayed in a very interesting exhibition of photographs which Jane has set out in the Hall, which is just 100m down Church Path, to which everyone is invited for the Reception. Our thanks go to Carol McCubbin and team for making/providing the refreshments and to Ruby, Adam and Honey herself for their generosity.

If police work was her pride, camping and guiding were her joy – working through the ranks, from the Brownies with Peggy Gill, to the Guides, a Ranger Leader and County Official, enjoying outside energetic camps with scores of people who with obvious affection, remember the fun they shared. Muriel recalls taking part on ‘Patrol Leader testing weekends’ at Heywood and the not so successful ever-crunching paper sleeping bag which Honey was trying out for the first and last time! Sandy and Sandra knew her too in her capacity as County Camp Adviser for the Guides. Eleanor Gibson remembers a trip to Frome and a lorry broken down, struggling to move. “Do you think” Honey said, “You girls could show them how to do it” and out piled the Rangers and pushed the lorry out of the way, to the astonishment of passersby, and jumped back inside their Dormobile with joy. “She certainly brought out the best in us!” and thanks to Angela and Frances for your contributions today.

If it wasn’t inspiring others, wielding a felling axe or bow saw, as Marion Perry and Dorothy Slyfield recall, Honey was a joy to be with on holidays and at Camp Reunions – she was a keen cyclist around the Scottish Borders, did long distance athletic races at Polesden Lacey and Nonsuch Park and won trophies, played a good game of badminton and with others invented the ‘Missing Links’ - many of her Ranger soul mates being here today. Honey’s work embraced computer systems at a sixth form college, re-organizing the Down Syndrome Association data base and working at the Co-op, Bentalls and Morrisons – with representatives of these here today.

As Kevin Barlow from Morrisons writes, employing Honey was the best decision he made. She was funny, had jokes a plenty, could move furniture around with ease and turned up to work even immediately after receiving chemotherapy. Her gift for friendship was truly great – sharing DVDs of Jacqueline du Pré playing cello music with those who shared her admiration; cooking banana and walnut cakes for Bridge nights, and planning this Service prompted e-mails from distant friends unable to travel here today but who join us in the spirit of the occasion; Councillors, Aldermen and the current Mayor of Epsom & Ewell in attendance.

Those who remember her 60th birthday will know this involved spending a “day on the footplate” on the Bluebell Railway and securing a certificate in the safe operation of a steam locomotive. I reckon had we thought of incorporating a life-

size one into a Summer Fair or the Jubilee Celebrations, which Honey worked on, with a coal shovel in one hand and ice creams in the other, Honey would have gladly driven one across the Glebe! She was often the first person visitors would encounter in the church as a couple coming to hear their banns have commented: she made them feel instantly like family.

Indeed, family and friends were attracted by her warmth and many, during her illness, grew closer. Today it is obvious so many people clearly want Honey to have a beautiful memorial service attended by as many as possible. Determined, practical, and dedicating much of her last reserves, she served St. Mary's and was elected as Churchwarden in 2011. As John Foster, a fellow bonfire maker in the Glebe recalls, Honey could quietly assert her authority when the need arose but did so from my observation with great humility, a virtue she would have never claimed for herself but was recognized by others. In fact when we spoke about her dying and giving her body to medical science, knowing she would not be having an immediate funeral, I asked what kind of Memorial Service she would like and she characteristically replied "She hadn't presumed she would have one!" But she is and she knew we would plan it. One day while taking communion to her at home, I asked Honey if I could read a favourite Bible Reading if she had one and she had – quick as a flash she told me the reference and we shall hear it read today as the second Bible Reading, read to us by Brenda, which celebrates the Christian virtue of humility. In a similar vein, the Archdeacon, Chris Skilton comments in his tribute, that not only did she hold a deep Christian faith but also sought to live it out daily. She was much treasured and loved in St. Mary's and further afield. The Bishop asked me to also express his thanks for Honey's life, for her courageous dedication and service to the church, offering his sympathy and prayers for us all. Rob Hall also sends his apologies as the Chaplain at St. George's Hospital where Honey spent many weeks. I know she appreciated both his and Hilary Johnson's ministry and frequently spoke favourably about them – Rob and Hilary reciprocate and remember Honey with great fondness, as a courageous and committed woman. Honey spoke highly of the entire medical and social care teams, who attended her, appreciated Esther's help at home and was so faithfully looked after by friends such as Ruby and Jane whose tireless care must not be forgotten. And however weak and tired Honey was at the end nothing would stop her mustering the strength to watch a race of the Grand Prix!

In a Christmas round robin (amidst many group texts updating us on her progress) Honey acknowledges her Bridge and Whist friends and Ruby's Ranger Unit, become renowned as the 'Missing Links' and for their wonderful companionship. Honey reviewed the year, her urgent, less urgent recalls to hospital and the shocking pink frock they put her in, for a while, - as it wasn't her style!

(continued on page 12)

Annual Parochial Church Meeting

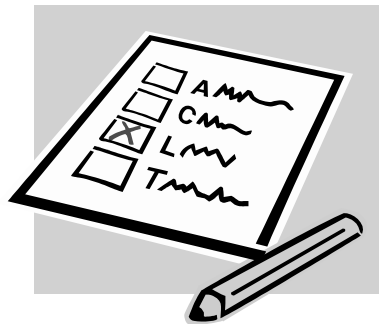
The Annual Parochial Church Meeting will be held in the Main Church Hall on Sunday 28th April, starting at 10.45am.

The Parish Accounts will be presented together with the review of all the activities and work of St. Mary's during the past year.

There will be elections for the Church Wardens, lay members of the PCC and for the Sidesmen and Sideswomen. Look out for the lists of the nominated candidates on display in the Bell Tower for three weeks before the 28th April.

If you would like to let your name go forward for election, please contact Penny Clarke (Churchwarden), or me.

Desé Child - PCC Secretary



from the Registers

Baptisms

Jack Arthur Elliott
George Vaughn
Cooper

Weddings

Deaths

Peggie Hunt
Margaret Dunlop
Roy Jolliffe
Rita Ormsby

All Our Yesterdays

50 years ago

Our Choral Society, like many another, are beset by falling numbers and are going to consider later in the year whether they will be able to continue. We very much hope that they will, for our Choral Society has been a valued part of our parish activities for the past 25 years or more. We were very sorry that a large number were not there to hear an excellent performance of “The Creation” which they gave, in conjunction with Holy Trinity choir, in Church in the middle of February. The weather and the time of year kept numbers down. We hope for more good news from them in the Autumn.

(Parish Magazine, Apr 1963)

100 years ago

The Easter Vestry for the Parish of Merton was held on Thursday evening in last week, the vicar presiding... Mr H. H. Holland moved a vote of thanks to the retiring churchwardens. Mr Whitmore had been a churchwarden 25 years, and... Mr Thurgood was known to be a busy man, and he had performed his duty well. Mr Holland supposed that a Vicar’s warden was always expected to “side” with the vicar (Voices: “Oh!”). Mr Holland proceeded: Vicars sometimes think they are infallible, like the Pope; and sometimes think they must act as if they were. That is a bad thing for a vicar to do, and it is for the people’s warden to bring him to earth again and teach him there may be another side. .. The vicar then said he wished publicly to offer thanks to his colleagues and the church workers – and he named everyone down to the church-cleaner. .. All through the year there had been steady, quiet progress, and no bickering (hear, hear).

(Wimbledon Borough News, 5th Apr 1913)



CARE VISITS AT HOME

Good Old Fashioned Service

Call our professional team on 020 8408 1540

Alternative

Bluebird Care offers a realistic, cost effective alternative to residential care. With familiar friends, relatives and possessions around, Bluebird Care 'just happens'.

What we offer

We offer everything from personal care to shopping, cleaning or social visits. In fact everything you need to stay in the comfort of your own home.

Contact us

Visit us online at www.bluebirdcare.co.uk

Contact our professional team on

020 8408 1540

www.bluebirdcare.co.uk



FINCH & CO. have been successfully selling properties in your area for over 100 years.

Call Katharine or Stefan today to arrange your free valuation.

020 8542 1193

email: sales@finchandcompany.com

website: www.finchandcompany.com



Floors for Thought...

Suppliers and installers of superior carpets and flooring

Free estimates

Free carpet samples

Available for measures / quotes evenings and weekends

Made-to-measure rugs and runner service

Quality carpet remnants at clearance prices

Wood flooring

Contact Simon Puxty

Tel: 020 7924 4334

Mob: 07980 918 747

Email: floorsforthought@aol.com

Passionate about Flooring

Summer Fair

This year's Summer Fair will take place in the glebe field behind the church on Saturday 15th June, running from 11am until 3pm. As always, this will be a fun day out for the whole community, offering something for the whole family and for all ages.

Admission 50p, children under 12 go free

STALLS

Books	Cakes	Plants	Bric a Brac	China & Glass
Jewellery	Good as New		Gifts	Toys
Raffle	Bottle Tombola			

Grand Draw (each prize carrying a minimum value of £50)

ENTERTAINMENT

To be announced (watch this space!) but will include bands, dancing, children's entertainment courtesy of the famous Sharky and George, games and competitions. And Bruce will be there with his working model steam railway.

FOOD AND DRINK

Bar (featuring locally brewed real ale and West Country cider)
Barbecue Extensive lunch menu Separate Pimms bar

Look out for posters around the area and keep an eye on this magazine and our website (www.stmarysmerton.org.uk) for regular updates. We need help in all areas of the fair, which provides a great opportunity for everybody in the parish to get involved in the life of your parish church. Please call Alan Hay on 07792 665791 or email him on alan.hay@cla.uk.com for further details, or if you think you can help put together this key event in the church's year.



(continued from page 6)

But she was very rarely downhearted by it all – seeing the positive and focusing on what she could do and gladly getting on with it, including winning the Bowls Competition for new players in 2011. She mentions having to give up her allotment after 25 years and as painful as that must have been, she focused on being glad that neighbours and friends would take it over, but Ruth as General Secretary of the Paddock Allotments will be addressing us about that later. Allotment handed on, Honey devoted more time to her own garden and in her front garden, patriotic and practical, she flew the flag of St. George when she was in and removed it, as a signal to caring neighbours, when she went away. I loved the turn of phrase she used to describe the beginning of her time as Churchwarden, as she took over following Hazel and Neville's faithful tenure. "Just after giving up my allotment" she wrote "came the great election of my role as Churchwarden". She purchased the survival guide, smiled at the observation that the job rarely attracts a queue and was delighted to work with Penny whose quite different skills she saw wonderfully complimenting her own and they made an excellent team.

Having worked closely together for a year and a half and more I know how much Penny misses her – as a colleague and a dear friend. On the first Sunday when the Churchwardens are received by the congregation, sadly Honey could not get to church – but sitting on her bed and with our mobile phones at the ready she was duly plumbed in by remote control. Apparently, at work at Morrisons she told Ranjini that having church bells as her choice of mobile ringtone was because she wanted better digs in heaven! She relished the research into the history and duties of the office of Churchwarden with its ancient right of arrest (which made her smile but was never exercised) and the significance of the staves, being delighted to receive the one here with the Crown on top as you can see.

Honey's contribution to parish life was very practical, taking an interest in Building & Works and she was looking forward to project managing this new lighting system now under way above our heads. As the PCC conveyed in a letter of thanks when she stood down, she had made an extraordinary and special contribution which would have been notable in any circumstances, but triply so given the cancer that she was doing battle with. Resilient and determined, she showed the utmost courage, loved this church and cared for its churchyard, which she made a special point of overseeing – mustering a willing band of volunteers sustained by sharp clippers, good cheer and prize muffins, they have transformed the churchyard and the group is poised to become an established working group of the PCC. As you walked into church today you will have seen their work and spotless approaching paths which would have lifted her spirit to see.

Now talking of lifting – when we get to our final hymn – which was most certainly Honey’s favourite – let’s give the Building & Works Committee just one more item on their busy agenda and lift the roof with your singing – music is supplied if you’d like it – let’s resound with harmony and thankfulness.

Going back to the churchyard – under Honey’s and with Barbara Moreland’s help, young people working with Merton’s Youth Justice & Reparation Service enjoyed working with our church volunteers in clearing and tidying the churchyard, preparing the ground for memorial and Jubilee Trees and as their leader Ruth Hearty writes: “We saw a positive change in the young people’s attitudes and behaviour – respecting and being respected and working together as equals it has been my favourite project over the last 5 years”. That project owes much to Honey’s gamble that all would work out well – the young people have now moved on and the better for their working with Honey and her team.

There is another story about Honey and justice as when she was working in a Supermarket and a young lad had been apprehended for stealing a sandwich – early one morning. Honey was called to deal with him and having learnt that he was heading for the first days’ work in a new job after a long spell of unemployment and was hungry – she paid for the sandwich herself and with advice let him go, saying: “There but for the grace of God goes you and me”. Not soft but compassionate and she could see the potential in others. Patriotic, public spirited and generous with her time, we celebrate the life of Honey – of Pat and thank God for sharing her with us.

And now may the Lord of the harvest bring her to his own that she might behold his glory, as she did sitting in the Churchwarden’s pew at her last Christmas Midnight Mass, when I recall glancing down the nave during the singing of the Sanctus (Holy, holy holy) and I saw Honey’s face in the candlelight gazing heavenward in a kind of spiritual rapture and thought to myself, sadly, Honey doesn’t expect to see another Christmas... but is making the most of the moment.

We in turn, make the most of this moment and offer up our deeply heartfelt thanks and prayers that she has drawn us together, our lives entwined with hers and we are **glad** for Honey’s life lived among us.

Rest eternal grant unto Honey, O Lord
And let light perpetual shine upon her.
May she rest in peace and rise in glory. Amen.

The Vicar

CHOIR, BRASS & ORGAN

Choral works for Choir with Brass and Organ

Elgar: Psalm 29 (Give unto the Lord)
Ireland: Vexilla Regis (The Royal Banners)
Parry: Blest Pair of Sirens
Vaughan Williams: Old 100th Psalm Tune

Choral items by Cyril Rootham, Walter Stanton, HC Stewart

Spectacular Classics for Brass Ensemble
Bernstein: Overture: Candide
Premru: Divertimento
Parker: A Londoner in New York

Ireland: Menuetto Impromptu for organ

The Occasional Singers of St. Mary's

Inner City Brass

Alexander Binns (organ)
Richard Halsey (conductor)

Sat 27 April 7.30pm

St Mary's Church Merton

Tickets £12 and £10 * Children under 16 free

Tickets available from: 020 8286 8099, 020 8540 0330 or email
abbotthazel@hotmail.com

In aid of St Mary's Organ Fund towards a new Mander Organ

One evening a bird loving vicar strolled over to his huge country churchyard, and just for fun, hooted softly, like an owl. To his delight and astonishment, an owl hooted softly back. The next night the same thing happened, and again, the night after that. Soon it became a regular habit, and every night for the following year, no matter what the weather, the vicar would go to the churchyard and hoot back and forth with his feathered friend. The hoots became longer and more complicated, and the vicar kept a careful log of the conversation. Just as he thought he was on the verge of a real breakthrough in interspecies communication, his wife had a chat with the neighbour who lived in a big house and garden next door to the church. "My husband comes here each night," she said, to "hoot to the owl in the churchyard." "That's odd," the neighbour replied. "So does my husband."

Tillman & Tsoukkas

Consulting Structural Engineers

Structural reports: Structural alterations

Subsidence claims: Party wall awards

Planning Advice: Extensions

Loft conversions: Basements

Building Regulations: Calculations & Drawings

020 8944 7575; fax 020 8994 7676

8 The Broadway, Wimbledon SW19 1RF

tillman_tsoukkas@btinternet.com

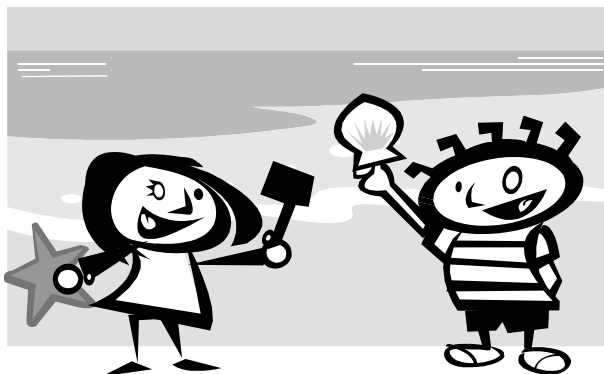
www.tillmantsoukkas.co.uk

Mothers' UNION

Christian care for families

Our speaker at last month's afternoon meeting was Gill Williams who spoke on:

Away from it all holidays



Gill explained how Mothers' Union partly, or fully, fund holidays for people experiencing stress in their everyday life. It includes children and adults with Special Needs. The average cost per family is approximately £500. The holidays take many forms. They include staying at a guest house or small family hotel, time at a Mothers' Union caravan (usually with full facilities and by the beach), breaks at a holiday camp, days out, etc. For many, it is their first holiday, which can be very beneficial.

Our thanks go to Gill for coming to us, as this was her final talk before retiring from doing this. Ms L U Abbey will be taking over the responsibility for these holidays in future.

Further thanks go to Sheila Tucker and friends who helped with the music and refreshments.

On Tuesday 2 April at 2.00pm, in the Small Hall, Krysia Williams will be speaking on:

A day in the life of being the Deputy Mayor

We look forward to your company for this interesting topic. Everyone is welcome!

Refreshments will be provided.

Joyce Rickards

Mothers' UNION
Christian care for families

RUSSELL-COOKE | SOLICITORS



Top 100 London based law firm, providing a range of specialist services.

PUTNEY
+44 (0)20 8789 9111

KINGSTON
+44 (0)20 8546 6111

CENTRAL LONDON
+44 (0)20 7405 6566

www.russell-cooke.co.uk

Prayer Calendar

Please pray:

1. Monday of Easter Week .Walk with us Lord, as you walked to Emmaus with the two disciples
2. Tuesday of Easter Week. For priests, especially John, that they find refreshment this week after a very busy Holy Week and Easter
3. Wednesday of Easter Week. Giving thanks for Christ's risen presence in our daily lives
4. Thursday of Easter Week. For peace in the world
5. Friday of Easter Week. For humility in service
6. Saturday of Easter Week. Give us the love that binds us more closely with compassion and care
7. THE SECOND SUNDAY OF EASTER May Christ's peace be present in our community
8. THE ANNUNCIATION OF OUR LORD TO THE BLESSED VIRGIN MARY Help us in our difficult times to know Christ shares all our sufferings and is with us
9. For staff and residents, including three parishioners, at Rosemary Lodge following the announcement of its proposed closure
10. For all involved in the development of the Nelson Hospital site
11. For Arthritis Care Research UK
12. For Housing Associations and the people desperately needing housing
13. For our local schools and pupils completing GCSEs and A levels this term
14. THE THIRD SUNDAY OF EASTER Guide us to find ways to embrace those we find it difficult to love
15. For the work of the World Wildlife Fund
16. For eye surgeons and those who are blind or have severely impaired vision
17. For those responsible for maintenance of our transport systems
18. For HM Coastguard Services
19. For our Prime Minister and all MPs
20. For our church youth group
21. THE FOURTH SUNDAY OF EASTER Give strength to those who work for better sharing of the world's goods
22. For children's hospices, especially our local ones Shooting Star in Hampton and Christopher's in Guildford
23. George, Martyr, Patron of England For our Queen and nation
24. For the maternity unit at St Helier, threatened with closure
25. MARK THE EVANGELIST Giving thanks for his gospel and for spiritual writers of our day
26. For the fishing industry
27. For the Occasional Singers Concert and giving thanks for all who give time and talents to raise money for our Restoration Appeal
28. THE FIFTH SUNDAY OF EASTER For this parish on the day of its Annual Meeting
29. For National Park rangers and all involved in the protection and upkeep of parks
30. For the Merton Park Ward Residents Association

Parish Profile: *Annie Slade*



When did you first come to St Mary's and what roles have you played here?

I first came to St Mary's with our children, Bradley and Natalie, in about 1977 and it wasn't long before Jean Neighbour, churchwarden even then, suggested very skillfully, that she 'might have the perfect job for me'! I was co-opted and spent many busy and happy years thereafter as a member of the Social Committee. I spent a relatively short time on the Sacristan team and am currently a sidesperson – meeting and greeting is definitely 'my thing'!

What is your favourite hymn or church music?

I have so many favourites. *Now the day is over* which I learned at my grandmother's knee, always moves me. *Jerusalem* which was my school anthem and reminds me of Speech Days and *Hail the day that sees him rise* because it so uplifting.

What is your most unforgettable memory of St Mary's?

I think my confirmation in 1979 by Bishop Mervyn was one of my most moving personal experiences. But the recent memorial service for our dear friend and churchwarden, Honey was amazing; the readings, hymns, the choir – just unforgettable.

What might the congregation not know about you?

Because I talk so much I doubt there's anything, of interest that is, they don't already know. Unless, of course, that my cooking repertoire does stretch beyond meringues!

FLYNN TREE CARE

Your local Tree Surgeon

All tree work undertaken

For free advice and quotation
please call Matt Flynn on
07904 431 472 or 020 8944 0501
or email flynntreecare@gmail.com

Fully insured and NPTC qualified

VALUABLES

THEY ARE MARKED WITH SPECIAL DOTS THAT WILL
SHOW UP UNDER AN ULTRAVIOLET LIGHT



A TRADITION OF TRUST AT YOUR TIME OF NEED

From advice on how to register a death to making all the arrangements, we're here 24 hours a day, offering a sympathetic and understanding service.

FREDERICK W PAINE

FUNERAL DIRECTORS & MEMORIAL CONSULTANTS

- 26 Crown Lane, MORDEN 020 8542 1214
- 6 Coombe Lane, RAYNES PARK 020 8946 1974



Part of Dignity plc. A British company
www.dignityfunerals.co.uk



I B WETHERELL **BUILDING AND ROOFING CONTRACTORS**

**SPECIALISTS IN EXTENSIONS
and LOFT CONVERSIONS**

FREE QUOTATIONS

Telephone & Fax: 020 8393 6119

Mobile: 07860 613873

CHURCH DIARY

April 2013

Easter Week

- 2 9am Holy Communion
3 4pm Silent Prayer, Parish Room, Church Hall
4 10.30am Holy Communion
7 **The second Sunday of Easter**
8am Holy Eucharist, Acts 5 27-32, John 20 19-end
10am Holy Eucharist, Acts 5 27-32, John 20 19-end
6.30pm Evensong Ps 16, Isa 52 13-53 12, Luke 24 13-35
9 **THE ANNUNCIATION OF OUR LORD TO THE BLESSED VIRGIN MARY**
9am Holy Eucharist
10 4pm Silent Prayer
11 10.30am Holy Eucharist, George Augustus Selwyn
14 **The Third Sunday of Easter**
8am Holy Communion, Acts 9 1-6, John 21 1-19
9.30am Parish Eucharist, Acts 9 1-6, John 21 1-19
11am Occasional Singers Rehearsal
6.30pm Evensong, Ps 86, Isa 38 9-20, John 11 17-26
16 9am Holy Eucharist, Isabella Gilmore
17 4pm Silent Prayer
18 10.30am Holy Eucharist, Alphege
21 **The Fourth Sunday of Easter**
8am Holy Communion, Acts 9 36-end, John 10 22-30
9.30am Parish Eucharist, Acts 9 36-end, John 10 22-30
11am Occasional Singers Rehearsal
6.30pm Evensong, Ps 113, Isa 63 7-14, Luke 24 36-49
23 9am Holy Eucharist, George, Martyr
24 4pm Silent Prayer
25 10.30am Holy Eucharist, Mark the Evangelist
26 8pm Occasional Singers Rehearsal
27 2.45pm Occasional Singers Rehearsal
7.30pm Choir, Brass and Organ concert

28 The Fifth Sunday of Easter

8am Holy Communion, Acts 11 1-18, John 13 31-35

9.30am Parish Eucharist, Acts 11 1-18, John 13 31-35

6.30pm Ecumenical Service at Martin Way Methodist Church – no service at St Mary's

30 9am Holy Eucharist, Catherine of Siena

May 2013

1 4pm Silent Prayer

2 10.30am Holy Eucharist, Athanasius

4 2pm Wedding of Abigail Lee and James Rowden

5 The Sixth Sunday of Easter

8am Holy Communion, Acts 16 9-15, John 14 23-29

10am Parish Eucharist, Acts 16 9-15, John 14 23-29

6.30pm Evensong, Ps 126, Zeph 3 14-end, Matt 28 16-end

Churches Together in Merton Park

Forum

On the Streets: Off the Streets

A presentation of the work of three church-based charities who work with people on our streets who need help and support

St. John Fisher Church Hall

Thurs 18 April : 7.30 for 8pm

Speakers:

John Goddard from Street Pastors

Councillor Linda Kirby from Faith in Action

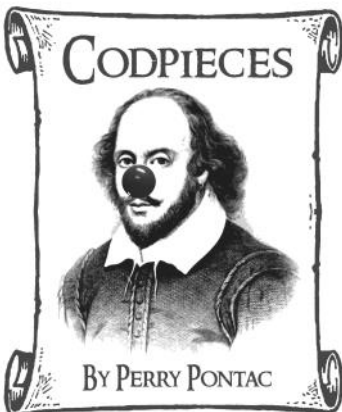
John Bush from the Winter Night Shelter

Parish Players present
Codpieces: 3 one act Shakespeare parodies
Thu 16 to Sat 18 May 7.45pm
Tickets: £10 (£5 for students on Thursday)
07546 065 267
www.parishplayers.net



As these rehearsal photos show, plans for the three plays that form our performance this year are well advanced. Rehearsals have been taking place since January, ready for the three performances in May of these very funny plays. Come along and find out what might have happened after Hamlet—and plenty of other people—died and a

new King was needed. In Prince Lear, we find out just why the aged King will need to divide his kingdom between his daughters; and in Fatal Loins, we discover what might have happened if Romeo and Juliet had lived – and had 15 children—and discovered that the course of true love never does run smooth...



Ten things you didn't know about Parish Players...

Parish Players was formed in 1957 at the instigation of Squire Heaton Renshaw, the then Vicar, who put out a request for activities for young people, and the rest is history. The current Vicar continues to be our Honorary President.

Four founder members, Doreen and Graham Gamble and Dot and Hugh Bradbury, are still active members of St Mary's. To date, we have donated over £25,000 to various charities which include NSPCC, Help 4 Heroes, Cancer Research & The Royal British Legion.

We have given 362 performances and sold more than 50,000 tickets. Productions have included pantomimes, comedies, musicals, thrillers, revues, period dramas & Shakespeare.

Our longest serving member has been a Parish Player for over 55 years.

On average there are 50 people involved in each production.

The song 'That's The End of the Show' was written by a former Parish Player, 50 years ago. It has since become a traditional finale to our pantomimes.

A number of former members have gone on to study and work professionally in theatre. This includes actors, dancers & musicians as well as backstage roles such as sound, lighting & costume design.

Members of Parish Players regularly perform a dramatised reading of the Passion in Church on Palm Sunday.

In addition to the hall hire charges paid each year, we have gifted over £7,000 to the Church Hall for items such as stage curtains, new piano and electrical overhaul of the hall.

The Cricketing Crawfords

One day, out of the blue, a gentleman appeared at the church asking about the grave of the Revd. J. C. Crawford. Apparently he was honorary curate here in the 1920's, and buried here with some of his family: all of them were famous cricketers.

Looking in the records we found three graves with the name Crawford, though with hardly any more details than the surname and vague locations. Two of the actual graves - when I found them - were no more than a stone edging, from which I had to dig the earth away to find the inscriptions, but I struck gold. All three graves were indeed members of this family. The gentleman was elated on his return to see these, and passed on much information about the cricketers.

Revd. John Charles himself was Chaplain of Cane Hill Mental Asylum from 1883 until he retired to Merton in 1919, and was therefore famous as "Parson" Crawford, or simply "Pa" because all his children were fine cricketers. His father Andrew was born in 1825, and played for the Gentlemen of England in the days when they wore top hats. He died, and was buried in the churchyard, aged 101.

"Parson" himself played for Kent from 1872-77, and for Leicestershire, Gentlemen of Sussex and Gentlemen of Surrey. He was powerfully built and could bat and bowl with either hand. The famous umpire Willsher declared he was the fastest bowler he had ever seen, and he once sent two bails flying 51 yards and 49 yards respectively. He was a well-known figure in teams around Coulsdon; and more than once he captained a whole team of Crawfords - including his father, brother Major Frank Crawford (captain of Kent), a nephew, three sons, and daughters Lesley and Audrey. Both of these were also fine cricketers, Lesley

scoring 106 not out in a local side, although it was Pa's sons who became famous. "Pa" became a prominent member of both the Surrey Club and the MCC, with many friends there, and was frequently seen in the pavilion watching matches till very late in life: he died in 1935.

The eldest son, Vivian Frank Crawford (b 1879), first played for Cane Hill at the age of eight. At Whitgift School, he was in the school eleven for six years scoring 4,130 runs and taking 472 wickets, more than any boy before or since. In one season with Surrey Colts in 1893, he scored 1,066 runs and took 107 wickets; playing for the Young Amateurs of Surrey against the Young Professionals, he scored a double century before lunch! At the age of 18, he was honoured by appearing with the Gentlemen of England, captained by W G Grace, against the Players at the Hastings Festival.

He started his career with Surrey in 1898. His play was also characterised by big hitting. At Bristol, he hit a ball over the pavilion: a distance of 160 yards, possibly a record for first-class cricket. Against Yorkshire at Bradford, two big hits went over the football stand, and two more hit the flagpoles at each end of the building! He finished his career in 1910 when he went to work in Ceylon; regrettably, his health was ruined serving in the First World War and he died in 1922 when only 43. He is buried in the "new" part of the churchyard.

Space does not permit many details of the other two sons. The second, Reggie Crawford, was a similarly high scorer and wicket-taker, but was notable for achieving these with a club foot; this and the draw of his singing engagements curtailed his cricket. (The Crawford family were all musical: a concert they gave is one of the few mentions of them in the parish magazine.) He is buried with his grandfather. The youngest son, John Neville

("Jack"), was the most famous but, to our regret, he is not buried at St Mary's. He surpassed his brothers' reputations, both at school, in Surrey and internationally. Until 1949, he had been the youngest ever English Test cricketer and the youngest player, with Surrey, to attain 1000 runs and 100 wickets per season – twice running. He lived until 1962.

We could finish by looking at the family's combined achievements in the year 1900 –

V F S	2913 runs	57 wickets
R T	2330 runs	185 wickets
"Jack"	1089 runs	210 wickets
"Parson"	1029 runs	103 wickets.



ASKING PA'S CONSENT.

Our cover cartoon, also reproduced here, shows "Parson" Crawford himself, with his youngest son J N. "Asking Pa's consent" was a familiar phrase, playing on J C's nickname of "Pa". J N is "asking" to go on tour to Australia.

Neville Squires

Donate Furniture to Christian Care

Christian Care will find a home for most household furnishings that are in a good condition, from mugs to beds: subject to current need. We accept fridges/freezers, washing machines, electric/gas cookers and microwaves in good working order. We are happy to receive kettles, toasters and irons. We accept only flat-screen TVs. That outgrown bed or unwanted table will make all the difference to a family leaving a hostel, or simply families just struggling to make ends meet.

We currently need:

Bedroom

Beds – 6 double, 4 single – clean condition with fire labels

1 king sized bed base

2 Chests of drawers, 8 wardrobes – small lightweight, pine and white especially



Living Room

3 Lightweight Sofas/chairs (with fire labels)

1 Tables & Chairs

White Goods

1 Electric cooker, 2 Fridge Freezers and 4 Washing Machines

We run a free pick-up service on Wednesday mornings and weekends at mutually convenient times. All our services are provided by volunteers.

020 3302 0181 or 07932 628840 or christiancaremerton@gmail.com
Please provide your postcode; if you are able to attach photos that would be really helpful.

Gillian Thick (Chair: Christian Care Merton)

MERTON PARK LADIES BOWLS CLUB

FUN QUIZ EVENING

on

Sat 13th April

at 7.30pm

**in St. Mary's Church Hall,
in aid of**

Cancer Research

**The emphasis is on FUN quizzes and we are not
trying to exercise your brains to excess!**

Tickets are £8

**and will include a welcoming glass of wine (or a soft
drink), and a ploughman's type supper during the interval.
Tables (teams) will be of 6 people so come as a team or as
an individual and join in with other individuals.**

We look forward to seeing you.

***Tickets: Margaret Plastow
corydon123@btinternet***

0208 542 2904

Would you like this magazine delivered to your door?

This can be easily arranged—and at a reduced cost. Each issue costs 50p, but those in the parish can subscribe for £5 for a year's issues delivered to your door. If you are outside the parish, you can receive your copy by post for the subscription plus the cost of postage.

All subscription enquiries to:

Hazel Abbott

8286 8099 or abbotthazel@hotmail.com



Hawes & Co
Established 1885

just a click away

As you would expect from Hawes & Co, our website keeps things simple and quick.
So next time you consider buying or selling your home just reach for a mouse.

www.hawesandco.co.uk

020 8542 6600

VICAR	Rev John Hayward Merton Vicarage Church Path SW19 3HJ	8543 6192 vicar@ stmarysmerton.org.uk
CURATE	Rev Kat Campion-Spall	Kat is on Maternity Leave until October 2013
HON.READER	Barbara Moreland 23 Melrose Road SW19 3HF	8542 3427 bmoreland43@gmail.com
SOUTHWARK PASTORAL AUXILIARIES	Brenda Richards 73 Sandbourne Avenue SW19 3EH	8540 4769 eric.brenda@ therichardshome.net
	Hilary Yates 11 Manor Gardens SW20 9AB	8405 3464 hmoore1485@gmail.com
CHURCH WARDENS	Penny Clarke 10 Kingswood Road London SW19 3NG	8542 9321 pennyclarke@ btinternet.com
	Vacant	
SUNDAY CLUB LEADER	Kate Circuit 50 Keswick Ave SW19 3JE	8542 0639 kate_circuit@hotmail.co.uk
8-11s CO-ORDINATOR	Clare Rice 2 Heyford Ave, SW20 9JT	3561 3140/07860 885145 clare@iricey.com
DIRECTOR OF MUSIC	Helen Smee	07791 681 490 helensmee@gmail.com
ELECTORAL ROLL OFFICER	Barbara Moreland	address above
SECRETARY TO THE PCC	Desé Child 5A Sheridan Road, SW19 3HW	8540 3087 desechild@hotmail.com
PAROCHIAL TREASURER	Mark Hackforth-Jones 1 Church Lane SW19 3NY	8543 6184
PROMISED OFFERINGS	Andrew Mills 36 Cranleigh Road SW19 3LU	8543 8302

CHOIR

Fridays 7.00-8.30pm Church
Men Fridays from 8.00pm Church

OCCASIONAL SINGERS

Richard Halsey
07841 514696
RichardKBHalsey@aol.com

SACRISTAN/ALTAR SERVERS

Anita Simpson
14 Tybenham Road SW19 3LA
8543 3764
adsimpson68@yahoo.co.uk

MINUTES SECRETARY TO THE PCC

Olivia Tripp
54 Dorset Road, SW19 3HB
8542 6304 olivia@tripp.org.uk

HALL BOOKINGS SECRETARY

Krysia Williams
21 Church Lane SW19 3PD
8542 8687
krysia.willams@btopenworld.com

WHIST DRIVE 2nd Monday of Month 7.45pm

Joyce Clay
137 Poplar Road South SW19 3JZ
8540 6578

CHURCHYARD ARCHIVIST

BIBLE READING FELLOWSHIP
Neville Squires
20 Kenley Road, SW19 8JQ
8542 5381 nevillejsqu@yahoo.co.uk

PARISH SAFEGUARDING OFFICER

John Combs
23 Bournemouth Road SW19 3AR
8540 5230
john.combs@talk21.com

ST MARY'S BADMINTON CLUB Thursdays 8.00pm

John Gout
57 Cranleigh Road SW19 3LX
8542 7573 jgout@ukgateway.net

PARISH LEGACIES CO-ORDINATOR

Ian Aldridge
259 Cannon Hill Lane SW20 9DB
8540 5836
i9aldridge@btinternet.com

BELL RINGERS

Practice on Monday from 7.45pm
For Services on Sundays from 8.50am & 5.50pm
Tower Captain Andrew Robinson
15 Aylward Road SW20 9AJ
8545 0558

SIDESPERSIONS

Derek Cox
49 Tybenham Road SW19
8542 2174

HALL CARETAKER

Mr & Mrs E Martin 13 Church Path SW19 3HJ
8540 2479

PARISH HALL MANAGER

Liz Circuit
50 Keswick Ave SW19 3JE
0787 0578 733

CHURCH FLOWERS

Sheila Martin
7 Church Path SW19 3HJ
8542 8979

MOTHERS' UNION

Mothers' Union 1st Tuesday in the month 2.00pm
Joyce Rickards 07860 358865
nannyjoyce@btinternet.com
Barbara Moreland 8542 3427

LEAFLET DISTRIBUTION

Graham Clark & Diana Cairns
62 Mostyn Road SW19 3LN
8542 9101

PARISH PLAYERS Tuesdays 7.45pm

Secretary Clare Quinn
19 Shaldon Drive Morden SM4 4BE
8542 5045 clare.quinn@blueyonder.co.uk

THE CHILDREN'S SOCIETY

Graham Clark
62 Mostyn Road SW19 3LN
8542 9101

J. L. HELLINGS

**AN ESTABLISHED FAMILY BUSINESS
ALL ROOFING AND GUTTERING
REPAIRS**

**30 YEARS EXPERIENCE COVERING
WORCESTER PARK AND CLOSE BY**

ALL NEW WORK GUARANTEED

VALLEYS, BAYS, ETC

FREE ESTIMATES

SPECIAL RATES TO OAPS

**020 8788 1459
100 KINGSMEAD AVENUE
WORCESTER PARK
SURREY KT4 8UT**

Uniformed organisations

GUIDE COMPANY

Merton Division Commissioner
Sally Holmes 19 Fairway Carshalton
Beeches SM5 4HR
sallyholmes1@hotmail.com

SCOUT GROUP 1st Merton Park
Group Scout Leader Vicky Tullett
116 Brighton Road, Burgh Heath,
Tadworth KT20 6AQ
01737 354130

RAINBOWS

1st Merton Park Weds 5.30-6.30
Martin Way Methodist Church Hall
Mrs Geraldine Ellis
22 Northway Morden SM4 4HF
8542 4758

BEAVERS Mon 6-7.15pm
Leader Ray Donovan-Hill
31 Sandringham Ave SW20 8JY
8540 5867

BROWNIES

1st Merton Park Tues 6pm
Allison Lister
64 Sandbourne Avenue SW19
8540 1620

CUBS Nelson Pack Thurs 6.15-7.45
Leader Mrs J.Clark
5 Riverside Drive, Mitcham, CR4 4BR
8648 5043

BROWNIES

2nd Merton Park - Thurs 6-7.30
Martin Way Methodist Church Hall
Kate Avery
121 Shaldon Drive Morden SM4 4BQ
8542 2540

SCOUTS Weds 7.15-8.45
Leader Simon Hill
21 Tybenham Road SW19 3LB
8542 4846

GUIDES

2nd Merton Park - Weds 7.30-9pm
Martin Way Methodist Church Hall
Kate Cusack
24 Bramshaw Rise New Malden KT3 5JU
kate7c@hotmail.com

EXPLORER SCOUTS

Weds 7.30-9.30
Leader Andrew Nowak
41 Parkview Court
Broomhill Road Wandsworth SW18 4JG
07890 659 034

STUDENT GRANTS

The **Rutlish Foundation** provides grants to assist young people at Universities or other places of higher education. To be eligible, students must:

- be ordinarily resident or born within the boundaries of the Ancient Parish of Merton
[The ancient parish of Merton is about a quarter of the area of the London Borough of Merton comprised of the present day parishes of St Mary the Virgin, Merton; St Saviour's, Raynes Park; St James's, Merton; St John the Divine, Merton and Holy Cross, Motpur Park.]
- or have attended Rutlish School for at least 3 years.

Applications should be submitted by 30th October for the academic year concerned.

Application forms and further information from:

Graham Mills (grahamw.mills@btinternet.com)
Clerk to the Trustees, The Rutlish Foundation,
c/o Rutlish School, Watery Lane,
Merton Park, London SW20 9AD

St. Mary's Church Hall

The perfect venue for

Weddings • Receptions • Dances • Birthdays
Anniversary Celebrations • Children's Parties
Nurseries • Playgroups • Film Shows
Whist Drives • Stage Productions

St. Mary's offers you a large hall with a stage and a second smaller hall, both with access to kitchen, cloakrooms, tables, chairs etc. Plus disabled facilities and parking.

Marquees in St Mary's Merton Glebe

We have a beautiful Glebe Field next to the Church of St Mary's, so if you would like a truly rural setting for your wedding reception, but still want to be married in London, then look at St Mary's Glebe Field.

For more information: Krysia Williams, Hall Booking Secretary
020 8542 8687 krysia.williams@btopenworld.com
www.stmarysmerton.org.uk/hall.htm