

Nordsøen

Guard/Chase/Survey Vessel



SPECIFICATIONS

Owner	Nordsøen Offshore P/S. V.A.T 35379967
Flag	Danish, Homeport Esbjerg
Year built/rebuilt	1968 (Frederikshavn Værft og Tørdok A/S)
IMO No	6804408
Call sign	OXGD2
Society	GL 100 A5 E2 DNV GL
GT	594
GRT	475 RT
NT	178
LOA	53,5 m
Br	10,0 meters

Nordsøen

Guard/Chase/Survey Vessel



Draft	3,35 meters
Engine	2 x B&W Alpha 1.100 bhp 810 KW totals 2.200 bhp 1.620 KW
Auxiliary	2 in Main engine
Speed	Max 16,2 knots on 2 engines
	10 – 12 knots on 1. Engine at app. 115 l/hour
	Std. By/Guard 1 – 5 knots, app. 20 – 35 l/hour
Propeller	Pitch propeller (4 blades)
Nav equipment	Fully equipped bridge. Kelvin Huges navigation equipment
	Bridge fully renewed app. 2003 - 2005
Deck equipment	2 large towing winches
	Nordsafe Fast Boarding Boat installed in 3500 SWL West david
	1 MOB boat
Accommodation	Capacity for up to 12 Clients in single and double cabins
Add. Ons/Client requests	Vessel can be modified to accommodate 12 pax in single cabins
	Azimuth Truster can be installed
	1 or 2 x 20" containers can be fitted on aft deck
	28 m/t marine crane on aft deck can be installed
Contact	E-mail: bridge@nordsoen.eu
	E-mail: engine@nordsoen.eu
	Satellite tlf.: +45 82 13 86 31
	All details believed to be correct but without guarantee



FOGA APS
FISKERNES
ORIENTERING
OM OLIE- OG
GASAKTIVITETER

Trafikhavnskej 19
DK- 6700 Esbjerg
Telefon: +45 75 45 11 44

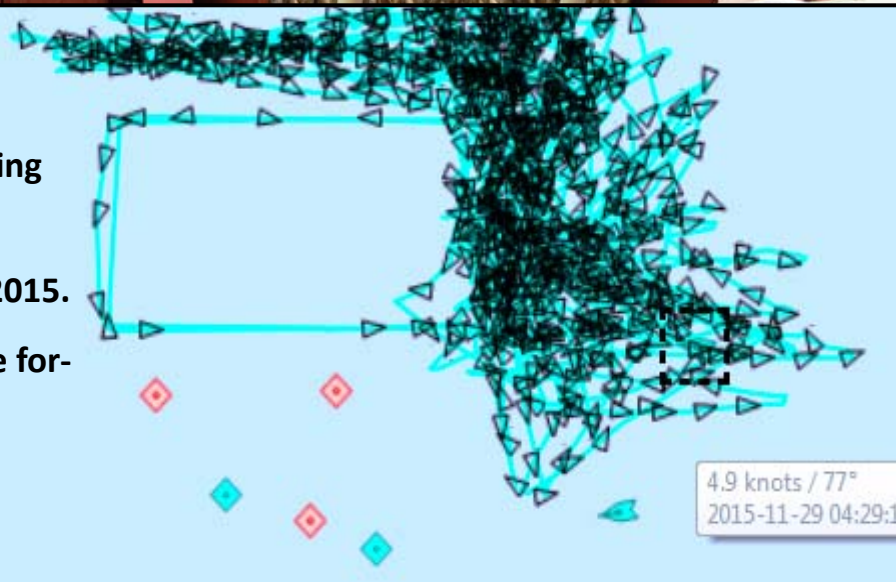
E-mail: fish.info@foga.dk
Web: www.foga.dk

Nordsøen

Guard/Chase/Survey Vessel



M/S Nordsøen positioning during Hurricane "Gorm", fall 2015. 12 m waves & hurricane force winds



FOGA APS
FISKERNES
ORIENTERING
OM OLIE- OG

Trafikhavnskaj 19
DK- 6700 Esbjerg
Telefon: +45 75 45 11 44

E-mail: fish.info@foga.dk
Web: www.foga.dk

Nordsøen

Guard/Chase/Survey Vessel



FOGA APS
FISKERNES
ORIENTERING
OM OLIE- OG
GASAKTIVITETER

Trafikhavnsvej 19
DK- 6700 Esbjerg
Telefon: +45 75 45 11 44

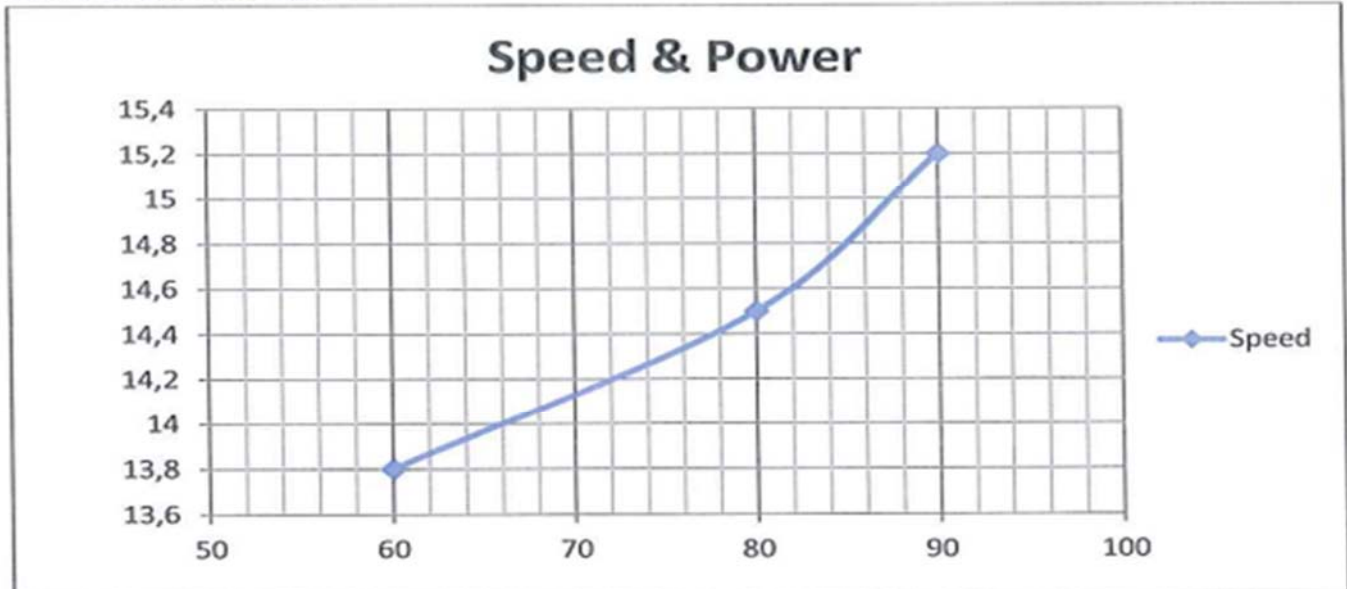
E-mail: fish.info@foga.dk
Web: www.foga.dk

Nordsøen

Guard/Chase/Survey Vessel



Speed and Power Curve



Speed [kn] as function of MCR [%]



FOGA APS
FISKERNES
ORIENTERING
OM OLIE- OG
GASAKTIVITETER

Trafikhavnskaj 19
DK- 6700 Esbjerg
Telefon: +45 75 45 11 44

E-mail: fish.info@foga.dk
Web: www.foga.dk

Nordsøen

Guard/Chase/Survey Vessel



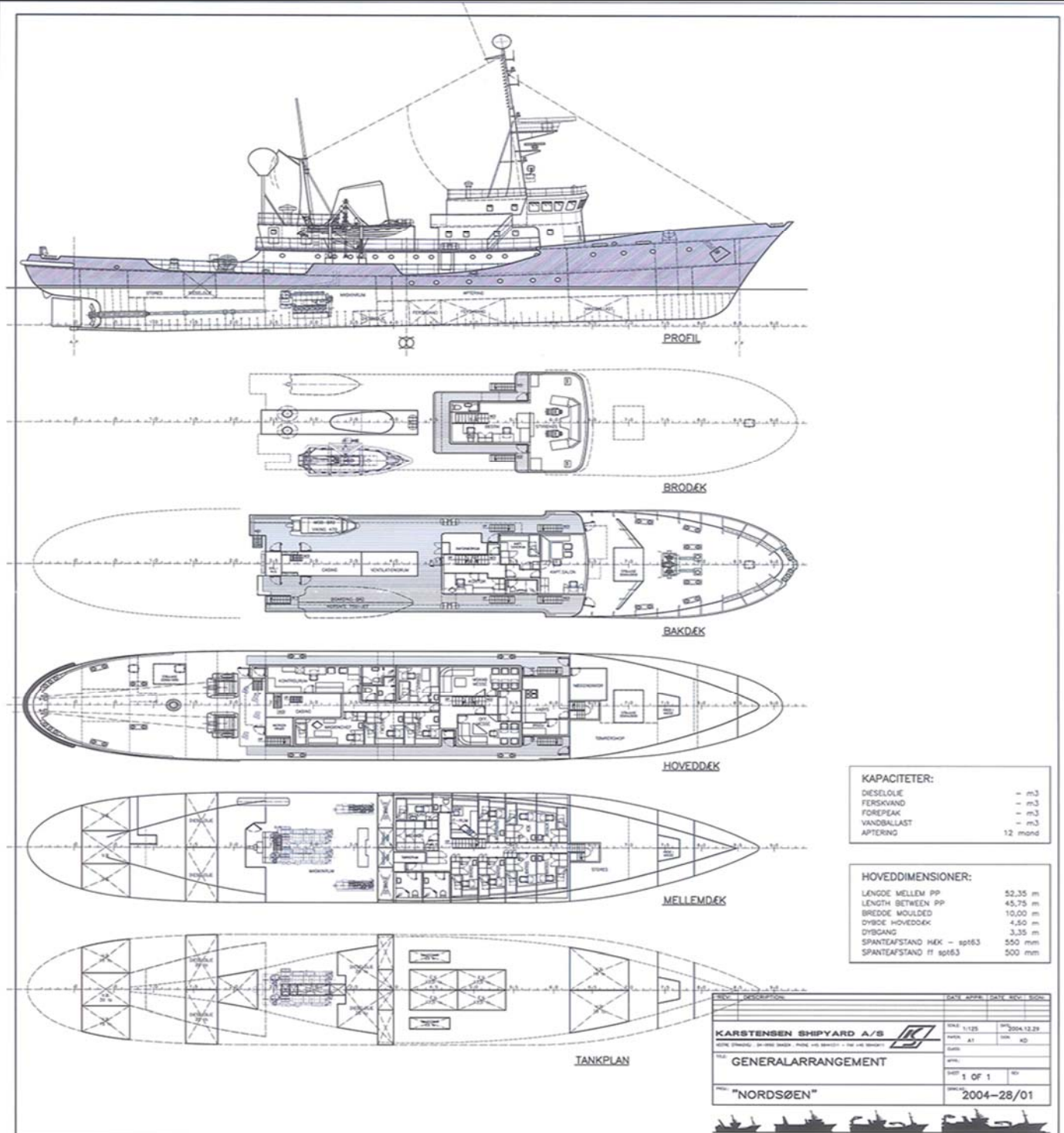
FOGA APS
FISKERNES
ORIENTERING
OM OLIE- OG
GASAKTIVITETER

Trafikhavnskaj 19
DK- 6700 Esbjerg
Telefon: +45 75 45 11 44

E-mail: fish.info@foga.dk
Web: www.foga.dk

Nordsøen

Guard/Chase/Survey Vessel



FOGA APS
FISKERNES
ORIENTERING
OM OLIE- OG
GASAKTIVITETER

Trafikhavnskaj 19
DK- 6700 Esbjerg
Telefon: +45 75 45 11 44

E-mail: fish.info@foga.dk
Web: www.foga.dk

Nordsøen

Guard/Chase/Survey Vessel



Engines in Operation									
Starboard or Port						Both			
Vessel Speed (knots)	Engine Load (%)	Fuel consumption (t per day)	Vessel Speed (knots)	Engine Load (%)	Fuel consumption (t per day)	Vessel Speed (knots)	Engine Load (%) (stbd)	Engine Load (%) (port)	Fuel consumption (t per day)
1	15	0,7				1			
2	15	0,7				2			
3	15	0,7				3			
4	20	0,7				4			
5	25	0,7				5			
6	35	0,8				6			
7	40	0,9				7			
8	50	1,1				8			
9	65	1,4				9			
10	75	1,9				10			
11	85	2,0				11			
12						12	65	65	2,8
13						13	80	80	3,8
14						14	85	85	4,0
15						15	90	90	6,0
16						16	95	95	8,0



FOGA APS
 FISKERNES
 ORIENTERING
 OM OLIE- OG
 GASAKTIVITETER

Trafikhavnskej 19
 DK- 6700 Esbjerg
 Telefon: +45 75 45 11 44

E-mail: fish.info@foga.dk
 Web: www.foga.dk

