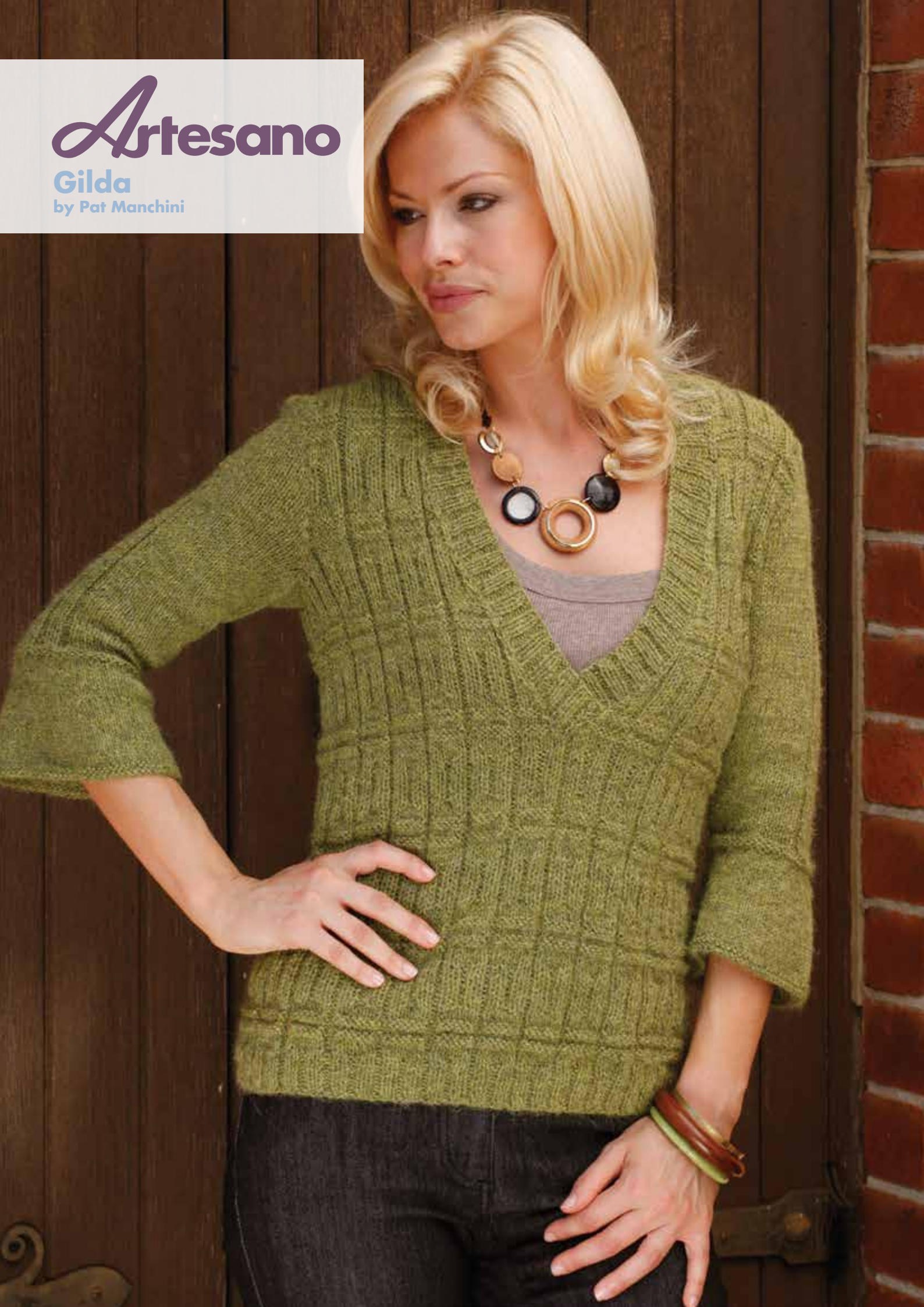


**Artesano**

**Gilda**

by Pat Manchini



## Materials

Artesano 100% Alpaca DK Yarn  
fern 9 10 10 11 11 50g Balls  
Pair knitting needles each nos  
3¼ mm and 4 mm (UK 10 and 8,  
USA 3 and 6). Set of four 3¼ mm  
knitting needles.

## Measurements

### To fit bust

79-84 86-91 94-99  
102-107 109-114 cm  
31-33 34-36 37-39  
40-42 43-45 in

### Actual measurement at underarm, approx

86 93 99 107 113 cm  
34 36½ 39 42 44½ in

### Length from shoulder, approx

57 58 60 61 62 cm  
22½ 23 23½ 24 24½ in

### Sleeve seam

30 30 30 30 30 cm  
12 12 12 12 12 in

## Tension

Instructions are based on a  
standard st st tension of 22 sts  
and 30 rows to 10 cm (4 in) on 4  
mm needles.

## Abbreviations

**K**, knit;  
**P**, purl;  
**st(s)**, stitch(es);  
**(rev) st st**, (reverse) stocking  
stitch;  
**patt**, pattern,  
**inc**, increase, increasing;  
**dec**, decrease, decreasing;  
**beg**, beginning;  
**alt**, alternate;  
**rep**, repeat;  
**cont**, continue;  
 **foll**, following;  
**rem**, remain(ing);  
**R(W)S**, right (wrong) side facing;  
**tog**, together;  
**tbl**, through back of loops;  
**cm**, centimetres;  
**in**, inches.

## Front

Using 3¼ mm needles, cast on  
102 (110; 118; 126; 134) sts.

**1st Row (RS)** – K2, (P2, K2) to

end.

**2nd Row** – K1, P1, (K2, P2) to  
last 4 sts, K2, P1, K1.

**3rd to 10th Rows** – Rep 1st and  
2nd rows 4 times.

Change to 4 mm needles and patt

**1st Row** – K6, (P2, K6) to end.

**2nd Row** – P6, (K2, P6) to end.

**3rd and 4th Rows** – As 1st and  
2nd.

**5th Row** – P.

**6th Row** – K.

**7th and 8th Rows** – As 1st and  
2nd.

**9th and 10th Rows** – As 5th  
and 6th.

**11th to 14th Rows** – Rep 1st  
and 2nd rows twice.

**15th Row** – K2, (P2, K2) to end.

**16th Row** – K1, P1, (K2, P2) to  
last 4 sts, K2, P1, K1.

**17th to 22nd Rows** – Rep 15th  
and 16th rows 3 times.

These 22 rows form patt. \*\*

Cont in patt until work measures  
26 cm (10¼ in) from beg, ending  
after a WS row.

## Divide For Neck

**Next Row** – Patt 51 (55; 59; 63;  
67), turn.

Cont on this group of sts for first  
half of neck.

**Next Row** – P2, work to end.

**Next Row** – Work to last 3 sts,  
K2tog, K1.

**Next Row** – P2, work to end.

**Next Row** – Work to last 2 sts,  
K2.

**Next Row** – P2, work to end.

Rep the last 4 rows until 41 (45;  
49; 53; 57) sts rem, ending after  
a dec row.

## Work 1 row straight.

\*\*\* Shape Armhole

**Next Row** – Cast off 7 (8; 9; 10;  
11) sts, work to end.

**Next Row** – P2, work to end.  
(NB:- omit this row on right half)

Now dec 1 st at armhole edge  
on next 5 rows, then on the 2 (3;  
4; 5; 6) foll alt rows at the same  
time dec 1 st inside neck edge as  
before on 3rd row following, then  
on every foll 6th row.

25 (27; 29; 30; 32) sts.

Cont dec inside neck edge only on  
every 6th row from previous neck  
dec until 21 (22; 24; 25; 27) sts  
rem.

Cont straight until front measures  
15 (17; 18; 19; 21) cm, 6¼  
(6¾; 7¼; 7¾; 8¼) in from beg  
of armhole shaping, ending at  
armhole edge.

## Shape Shoulder

Cast off 7 (7; 8; 8; 9) sts at beg of  
next and foll alt row.

Work 1 row. Cast off rem 7 (8; 8;  
9; 9) sts.

With RS facing rejoin yarn to rem  
sts and patt to end.

**Next Row** – Work to last 2 sts,  
P2.

**Next Row** – K1, K2tog tbl, work  
to end.

**Next Row** – Work to last 2 sts,  
P2.

**Next Row** – K2, work to end.

Rep the last 4 rows until 41 (45;  
49; 53; 57) sts rem, ending, after  
a dec row.

## Work 2 rows straight.

Complete to match left half  
working from \*\*\* to end.

## Back

Work as front to \*\*.

Cont in patt until back measures  
same as front to armhole shaping,  
ending after a WS row.

## Shape Armholes

Cast off 7 (8; 9; 10; 11) sts at beg  
of next 2 rows. Dec 1 st at each  
end of next 5 rows, then on every  
foll alt row until 74 (78; 82; 86;  
90) sts rem.

Cont straight until back measures  
same as front to shoulder shaping,  
ending after a WS row.

## Shape Shoulders

Cast off 7 (7; 8; 8; 9) sts at beg of  
next 4 rows, then 7 (8; 8; 9; 9) sts  
at beg of next 2 rows.

Slip rem 32 (34; 34; 36; 36) sts on  
a spare needle.

## Sleeves

Using 3¼ mm needles, cast on 75  
(79; 79; 83; 85) sts.

Purl 4 rows inc 7 sts evenly across last row.

82 (86; 86; 90; 92) sts.

Change to 4 mm needles and st st and beg K row work 6 rows.

**Next Row** – K4 (2; 2; 4; 5), \* K2tog, K6 (7; 7; 7; 7); rep from \* to last 6 (3; 3; 5; 6) sts, K2tog, K to end.

72 (76; 76; 80; 82) sts.

**Work 9 rows straight.**

**Next Row** – K4 (1; 1; 3; 4), \* K2tog, K5 (6; 6; 6; 6); rep from \* to last 5 (3; 3; 5; 6) sts, K2tog, K to end.

62 (66; 66; 70; 72) sts.

**Work 9 rows straight.**

**Next Row** – K7 (6; 12; 11; 15), (K2tog, K1) 15 (17; 13; 15; 13) times, K2tog, K to end.

46 (48; 52; 54; 58) sts.

Change to 3¼ mm needles and beg K row for WS work 3 rows in rev st st thus forming a ridge on RS.

Change to 4 mm needles and patt

**1st Row** – K16 (17; 19; 20; 22), P2, (K2, P2) 3 times, K16 (17; 19; 20; 22).

**2nd Row** – P16 (17; 19; 20; 22), K2, (P2, K2) 3 times, P to end.

Cont in patt as on these 2 rows shaping sleeve by inc 1 st at each end of next row, then on every foll 4th (4th; 4th; alt; alt) row until there are 54 (68; 72; 60; 68) sts, then on every foll 6th (6th; 6th; 4th; 4th) row until there are 66 (72; 76; 82; 88) sts, taking extra sts into st st.

Cont straight until sleeve measures 30 cm (12 in) from beg, ending after a WS row.

### Shape Top

Cast off 7 (8; 9; 10; 11) sts at beg of next 2 rows. Work 2 rows straight. Dec 1 st at each end of every RS row until 26 (28; 30; 32; 34) sts rem, then on every row until 16 (18; 20; 22; 24) sts rem. Cast off loosely.

### Neckband

First join shoulders. Using set of four 3¼ mm needles, RS facing, starting at centre front, K up 76

(79; 81; 84; 88) sts evenly along right neck edge, K across back neck sts dec

2 sts evenly, finally K up 76 (79; 81; 84; 88) sts evenly down left neck edge.

182 (190; 194; 202; 210) sts.

NB:- Work backwards and forwards in rows, not rounds.

**1st Row** – K1, P1, (K2, P2) to last 4 sts, K2, P1, K1.

**2nd Row** – K2, (P2, K2) to end.

Rep the last 2 rows 4 times more.

Cast off evenly in rib working firmly across first and last 10 sts.

### To Make Up

Omitting welt and neckband press remainder on WS following instructions on the ball band, paying special attention to the st st sections of cuffs. Join side and sleeve seams. Sew in sleeves. Join the side edges of neckband to “pick up” row overlapping right half over left half at centre front. Press seams.



Artesano  
DK

Free patterns for this yarn at:  
[www.artesanoyarns.co.uk](http://www.artesanoyarns.co.uk)



**Artesano**

**Artesano Ltd**

Unit G, Lambs Farm Business Park  
Basingstoke Rd, Swallowfield  
Reading, Berkshire  
RG7 1PQ

+44 (0)118 950 3350  
[www.artesanoyarns.co.uk](http://www.artesanoyarns.co.uk)

[info@artesanoyarns.co.uk](mailto:info@artesanoyarns.co.uk)  
Copyright © Artesano 2016

To view more patterns from this range and many others, please visit [www.artesanoyarns.co.uk](http://www.artesanoyarns.co.uk), where you can also sign up for free patterns, competitions, Artesano news and much more.