

Priority Tables for Lautem District

Age groups	Type of residence								
	Total			Household			Institutions		
	Total	Male	Female	Total	Male	Female	Total	Male	Female
Total	100,740	50,099	50,641	110,318	50,400	59,918	432	221	211
0-4	11,803	6,174	5,629	15,092	6,174	7,422	1	0	1
5-9	14,707	7,808	7,009	18,730	7,808	9,028	1	1	1
10-14	11,149	4,825	6,324	13,094	4,825	6,268	13	11	12
15-19	1,245	4,333	4,491	1,156	4,542	4,814	10	11	11
20-24	6,064	2,444	3,118	1,926	2,829	3,090	140	179	141
25-29	4,238	2,306	2,330	4,083	2,297	2,586	35	20	12
30-34	1,966	1,232	1,338	1,527	1,217	1,218	25	15	18
35-39	1,210	1,190	2,626	1,281	2,886	2,617	19	8	11
40-44	1,206	2,006	2,341	1,261	2,577	2,734	15	0	1
45-49	4,141	1,874	2,188	4,197	1,873	2,888	4	2	1
50-54	4,618	1,286	2,337	4,489	1,284	2,318	0	7	1
55-59	2,839	1,373	1,466	2,821	1,248	1,452	0	5	1
60-64	1,130	1,067	1,063	1,127	1,061	1,062	3	2	1
65-69	1,763	88	89	1,730	89	89	1	1	1
70-74	1,606	611	79	1,604	611	79	2	1	1
75+	1,717	618	387	1,716	618	387	1	1	0

Priority Tables for Lauteam District

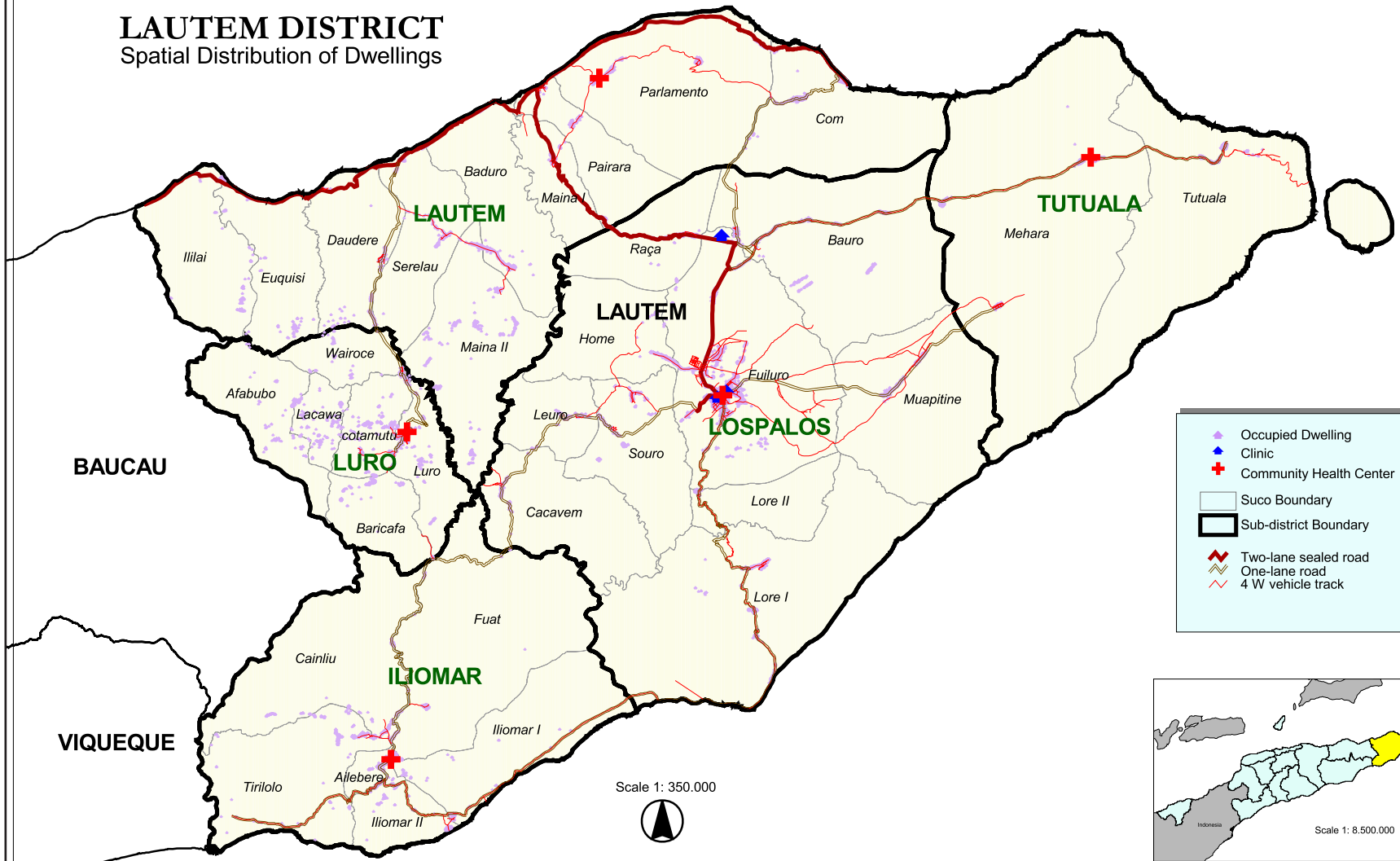
copyright © NSD and UNFPA 2008

National Statistics Directorate (NSD)
United Nations Population Fund (UNFPA)

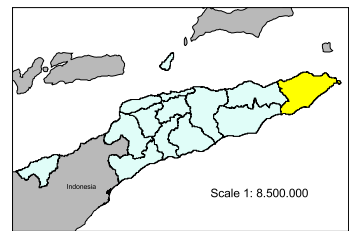


LAUTEM DISTRICT

Spatial Distribution of Dwellings



- Occupied Dwelling
- ◆ Clinic
- + Community Health Center
- Suco Boundary
- Sub-district Boundary
- Two-lane sealed road
- One-lane road
- 4 W vehicle track

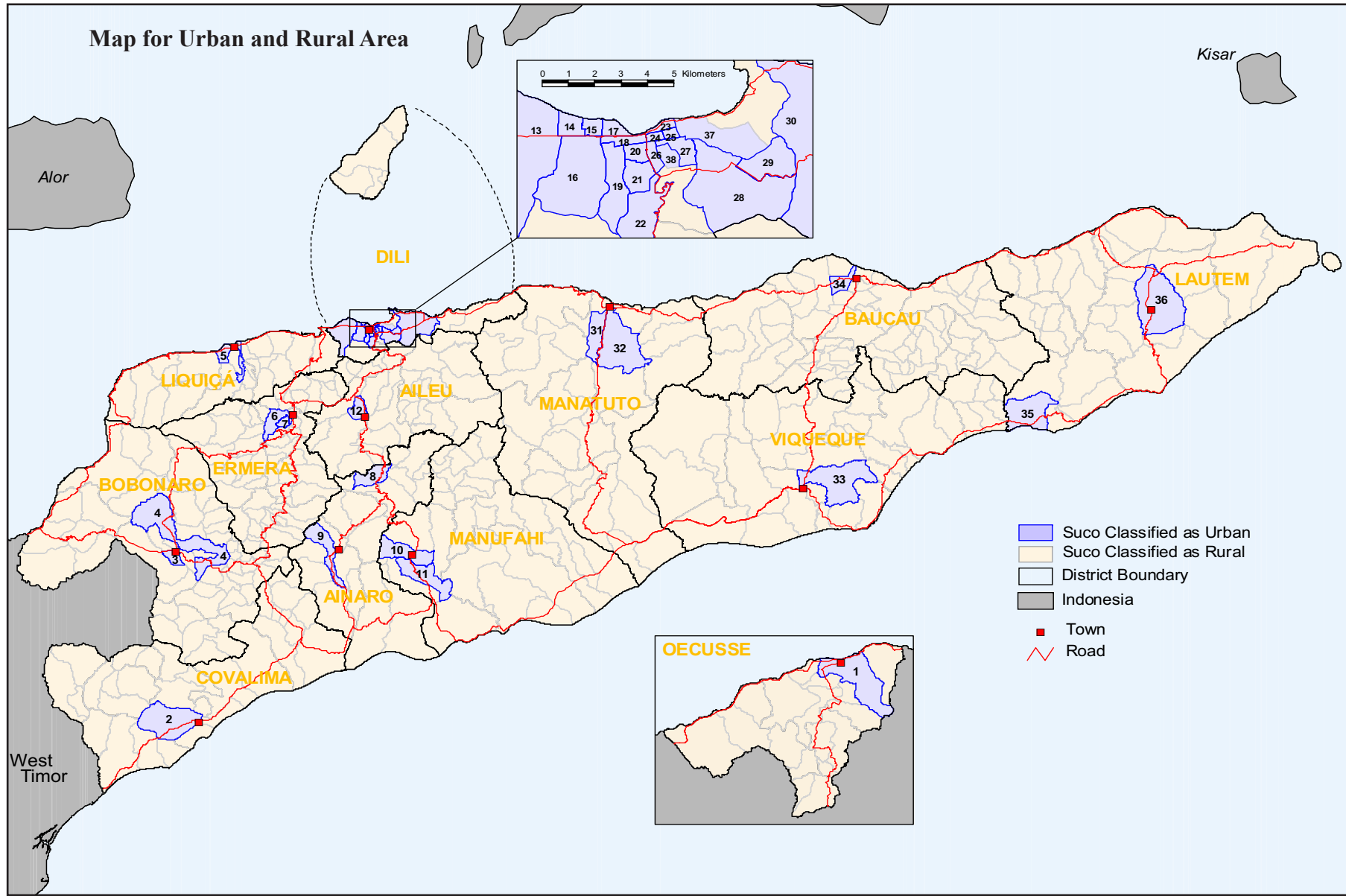


Scale 1: 350.000



This map is not intended to be an authoritative source of information on administrative boundaries. The actual boundaries of districts, subdistricts and sucos may vary from those shown on the map.

Map for Urban and Rural Area



Director Nacional de Estatística

Manuel Mendonça

The Census Project Team 2004

Who Produced the Current Book:

Direcção Nacional de Estatística (DNE)

and

United Nation Population Fund (UNFPA)

International Technical Adviser

Allen Harbrow

Glenn McKinlay

Andreas Demmke

Ricardo Neupert

Programme Coordinator

José Lucas da Silva

National Coordinator

Elias dos Santos

Data Processor

Kira Meadows

Silvino Lopes

GIS and Mapping Technicians

Alipio Cardoso Moniz

César Melito dos S. Martins

Demographer Trainee

Anastasia SEP Vong

Data Analyst Trainee
Manuel da Silva

Information Technology Officer
João Correia Freitas

Reviewers
Ricardo Neupert
Jose Lucas
Abilio Belo
Caroline meenagh

Editor (graphic designer)
Domingos FREITAS

Photographs:
Domingos Freitas
DNE (staff)

Preface

To the lay person, a population and housing census appears to be a simple undertaking which consists mainly of counting individuals, collecting information about these individuals and publishing respective numbers. This belief is far from true. In reality, the undertaking of a census is a quite difficult endeavor which involves the use of a complex strategy to mobilize both people and resources. Ultimately, it becomes the main source of data that serves a broad variety of information needs such as population size, spatial distribution and demographic, social and economic characteristics of people.

Census data are used for national and sectoral planning, allocating resources, providing roads, making improvements to housing, constructing schools, hospitals and health care centers, and for analyzing both employment and unemployment trends. Good-quality and timely census results are essential in measuring population trends, both guiding and focusing policies and programs, controlling and monitoring implementation, helping set goals and priorities, and lastly, designing funding procedures.

Population and housing censuses are the nucleus of national statistics systems. For the foreseeable future, they will continue to be the main source of data for governments and other organizations in most countries. A unique characteristic of a census is that it is the only source of data for the smallest administrative areas and localities within a country and also for special population groups and trends that change slowly over time. For example, a census allows the study of migrant populations, persons living in disadvantaged areas or circumstances, or households headed by women and other gender-related topics.

For more than three decades, the United Nations Population Fund (UNFPA) has been playing a leading role in supporting censuses in less-developed countries, many of which could not have conducted their censuses but for the timely assistance provided by UNFPA. This ranges from support for the total cost of the census in some countries, to technical aspects of capacity-building (especially in cartography, data collection, processing, data analysis and dissemination) in others. In this undertaking, UNFPA has been working in close partnership with other international, technical and donor agencies, especially the United Nations Statistics Division, the European Community, the U. S. Bureau of the Census, agencies within the UN system and the UN Regional Commissions. Apart from its direct support at the country level, UNFPA provides regional technical support through a network of Country Technical Services Teams (CSTs). UNFPA's technical and financial assistance to less developed countries has contributed to successful censuses in many countries and strengthened their capacities to conduct modern censuses. One clear example of this contribution is the Timor-Leste 2004 Population and Housing Census.

Most of the partners mentioned above played an important role in the success of 2004 Timor-Leste Census. It is also important to refer to the generous support of USAid, NZAid, AusAid, and Irish Aid in this process. However, we cannot forget that our main partner is the National Statistics Directorate, and it was this Directorate which conducted the 2004 Census. Neither can we forget the enumerators, supervisors, suco chiefs, district census officers, who significantly contributed to the success of the census.

It is pertinent to stress that achieving an improved balance between population growth and socioeconomic development is the goal of UNFPA work in the area of population and development. UNFPA helps support country efforts to formulate population and development policies and programs; strengthen national capacity in the area of data collection and analysis; and promote knowledge of the linkages between population variables and economic and social development. These linkages may be found among poverty, environment, migration, urbanization and ageing. In carrying out its mandate, UNFPA attempts to ensure maximum impact on the lives of the poor and especially women. Central to this support is the assistance to conduct, process, analyze and disseminate census information.

The publication of these set of reports containing the results of the 2004 Population and Housing Census by districts is a major accomplishment of the National Statistical Directorate, not only in relation to the magnitude of the effort involved in the production of tables and maps, but also because it will provide users with detailed information on the location of the population and its demographic, social and economic characteristics. Today, more than ever, information on the size and characteristics of the total population of a country is not sufficient for many purposes. Population data are often needed for administrative subdivisions of a country. The spatial distribution of the population is not even but is dense in some places and sparse in others and the geographic patterns of demographic, social and economic characteristics are often quite complex. These reports will provide a wealth of data to study and analyze those patterns.

Contents

	Page
PREFACE	vii
INTRODUCTION	xv
1. Population	1-6
2. Social characteristics	7-14
3. Households	15-22
4. Fertility and mortality	23-33
5. Education and literacy	35-56
6. Economic activity	57-75
7. Disability	78-80
8. Housing	81-91
9. Migration	93-104
Census glossary	105-111

LIST OF TABLES

1. POPULATION	1
Table 1.1: Lautem: Population by type of residence and sex according to age groups	2
Table 1.2: Lautem: Population in private households by sex according to single ages	3
Table 1.3: Lautem: Population in private households by sex according to sub-district and suco	6

Contents - continued

	Page
2. SOCIAL CHARACTERISTICS	7
Table 2.1: Lautem: Population in private households, 15 years and older, by marital status according to sex and age groups	8
Table 2.2: Lautem: Population in private households, 6 years and older, by religion according to sex and age groups	10
Table 2.3: Lautem: Population in private households, 6 years and older according to mother tongue	12
Table 2.4: Lautem: Population in private households, 6 years and older, by capability in official languages and sex according to age groups	14
3. HOUSEHOLDS	15
Table 3.1: Lautem: Population in private households by marital status according to sex and relationship to the head of the household	16
Table 3.2: Lautem: Head of private households by marital status according to sex and age groups	18
Table 3.3: Lautem: Private households by number of residents according to sex and age group of the head of the household	20
Table 3.4: Lautem: Private households according to sub-district and suco	22
4. FERTILITY AND MORTALITY	23
Table 4.1: Lautem: Women in private households, 15 years and older, by number of children ever born according to sex of children and age of the woman and total number of children ever born according to sex of the children and age of woman	24

Contents - continued

	Page
Table 4.2: Lautem: Women in private households, 15 years and older, by number of living children according to sex of children and age of the woman and total number of living children according to sex of the children and age of woman	27
Table 4.3: Lautem: Women in private households by number of stillbirths according to age of woman	30
Table 4.4: Lautem: Women in private households, aged 15 to 54 by reported birth in the 12 months prior to the census according to age groups	31
Table 4.5: Lautem: Women in private households by age at first birth and median age at first birth and by year of occurrence	32
Table 4.6: Lautem: Population in private households by survival of parents according to age groups	33
5. EDUCATION AND LITERACY	35
Table 5.1: Lautem: Population in private households, 6 years and older, by age groups according to sex and educational attainment	36
Table 5.2: Lautem: Population in private households, 6 years and older by literacy* in any of the official languages according to sex and age group	42
Table 5.3.a: Lautem: Population in private households, 6 years and older, by language capability in Portuguese according to sex and age group	45
Table 5.3.b: Lautem: Population in private households, 6 years and older, by language capability in tetum according to sex and age group	48
Table 5.3.c: Lautem: Population in private households, 6 years and older, by language capability in bahasa according to sex and age group	51
Table 5.3.d: Lautem: Population in private households, 6 years and older, by language capability in english according to sex and age group	54

Contents - continued

	Page
6. ECONOMIC ACTIVITY	57
Table 6.1: Lautem: Population in private households, 15 years of age and older, by age groups according to sex and current economic activity	58
Table 6.2: Lautem: Population in private households, 15 years of age, currently economically active, by age groups according to sex and main occupation	61
Table 6.3: Lautem: Population in private households, 15 years and older, currently economically active by age group according to sex and industry	66
Table 6.4: Lautem: Population in private households, 15 years of age and older, current economically active, by number of days worked in the week prior to the census day according to sex and age groups	69
Table 6.5: Lautem: Population in private households, 15 years of age and older, currently economically active, by number of months worked prior to census day, according to sex and age groups	72
Table 6.6: Lautem: Private households with residents 15 years and older and number of persons 15 years and older by number of unpaid days worked for the suco community	75
7. DISABILITY	77
Table 7.1: Lautem: Private households by presence of persons with disability (if any) and type of disability according to sex and age of the head of the household	78

Contents - continued

	Page
8. HOUSING	81
Table 8.1: Lautem: Private households by type of ownership of the dwelling according to construction material of floor, walls and roof	82
Table 8.2: Lautem: Private dwellings by type of ownership of the dwelling (occupied only) according to construction material of floor, walls and roof	83
Table 8.3.a: Lautem: Private households by construction material of floor according to sex and age group of the head of the household	84
Table 8.3.b: Lautem: Private households by construction material of walls according to sex and age group of the head of the household	86
Table 8.3.c: Lautem: Private households by construction material of roof according to sex and age group construction material of roof	88
Table 8.4: Lautem: Private households according to livestock kept and number of persons and amount of livestock in those households	90
Table 8.5: Lautem: Private households according to crops cultivated and persons in those households	91
9. MIGRATION	93
Table 9.1: Lautem: Population in private households by place of birth and present residence according to sex and age groups (life-time migration)	94
Table 9.2: Lautem: Population in private households by place of present residence and residence in January 1999 according to age and sex groups	97
Table 9.3: Lautem: Population in private households by place of present residence and residence in July 2002 according to age and sex groups	100
Table 9.4: Lautem: Population in private households 5 years and older living in Lautem in 1999 and in another district in 2004 by sex and reason for moving	103
Table 9.5: Lautem: Population in private households 2 years and older living in Lautem in 2002 and in another district in 2004 by sex and reason for moving	104



Introduction

As part of its activities of disseminating the 2004 Census of Population and Housing, the National Statistic Directorate (NSD) has already produced four publications. The first one is a book with the national priority tables, containing tables considered by the specialized agencies of the United Nations as the most relevant to construct after the census data are processed. The second publication is a booklet containing selected demographic indicators calculated with census data, graphs and maps. The third product is a poster that displays basic population and demographic information. The fourth publication is the Census Atlas, a collection of selected thematic maps and tables on population characteristics of Timor-Leste. The natural fifth product is a set of books with priority tables at the district level.

Census data are used to conduct diverse economic, social and demographic studies about the entire country, but are also much utilized to analyze areas at different levels of aggregations. These are mainly administrative areas such as regions, provinces, districts, municipalities, counties, villages or even the so called census enumeration areas or census tracks. Data for local areas enable the user to obtain statistical information on specific localities of interest as well as to examine variations among local areas. Typical examples are the use census socioeconomic indicators to rank local areas according to their level of socioeconomic development in order to focus development programs where they are most needed. In other words, not only the magnitude of population needs is important but also the spatial location of such needs. Local area analysis is also used to compare labor markets in order to analyze potential migration streams. Actually, it is the main source of internal migration data.

The results of population and housing censuses are useful for planning and monitoring plans directed to the development of local areas, small towns, geographic regions, etc. It is also important to remember that, although the implementation of national social and economic development programs is a function of the state, when it comes to the execution, many national programs are the responsibility of local areas administration.

It is important to remember that the census is the only source that provides total statistical coverage, from the broadest level (country) to the most local areas, which in the case of the 2004 Census was the *suco*. It makes it possible to study all kind of demographic, social, occupational or ethnic sub-groups at the finest level. Because of its coverage of the entire country, it is an essential master sample frame for any household survey.

As mentioned above, census data have been traditionally aggregated by various types of administrative units. However, there is an increasing demand for local area data that cut across the local administrative boundaries. For example assessments of the impact of population on the environment may require such special areas. The spatial units for those types of studies may combine a group of small local administrative areas in order to form the required sector. In this situation the availability of census databases with mapping capability is of great importance.

It is finally important to mention that a major administrative use of census data is in the delineation of constituencies and the allotment of representation on governing bodies. Detailed information on spatial distribution of the population is essential for this purpose. Many aspects of the legal or administrative status of territorial divisions may also depend on the size of their populations.

To summarize, there is an ample amount of census data that is used at the level of administrative divisions of countries. In Timor-Leste, the district is one of the most important of such divisions. Providing information at this level will satisfy many needs. Therefore, as the country faces the challenges of planning its future development, it is expected that the publication of the set of 13 books, one per district, will be of extensive use by planners, policy-makers, researchers and administrators, especially at the local level. It is also important to mention that two tables in these publications present data at the sub-district and *suco* level.

One includes the population by sex and the other the number of households. An additional piece of information provided in these tables is the rural or urban classification of the suco.

Each book contains 8 sections dealing with a diversity of topics: population, social characteristics, households, fertility and mortality, education and literacy, economic activity, disability and housing.

Each section contains several tables, which are considered to contain the most relevant information according to consultations with national and international agencies. As mentioned above, recommendations of specialized agencies of the United Nations were also taken into account. It is likely that some tables considered by some agencies as important were not included. However, these tabulations represent a compromise between the

ideal desired tabulations and the limits imposed by practical considerations. In any case, the National Statistics Directorate is able to produce special tabulations on demand if census data users require tables not included in these publications.

It is important to notice that a section on migration was not included in these publications. Data on international migration and migration between districts is presented in the National Priority Tables publication*, and it is redundant to present those migration tables also here. Migration within districts (for example between sub-districts or sucos) is not possible to obtain because migration data from the census questionnaires was entered only at the district level.

Two appendices were added at the end of this publication: Appendix A which includes a copy of the questionnaires (Tetum and English) and Appendix B which consists of the census glossary.

* Nacional Statistics Directorate, *Timor-Leste. Census of Population and Housing 2004. National Priority Tables*, Dili, 2006

Population

Table 1.1
Lautem: Population by type of residence and sex according to age groups

Age groups	Type of resident								
	Total			Household			Institution		
	Total	Male	Female	Total	Male	Female	Total	Male	Female
Total	56,293	27,630	28,663	55,921	27,336	28,585	372	294	78
0-4	9,871	5,087	4,784	9,864	5,084	4,780	7	3	4
5-9	8,753	4,469	4,284	8,753	4,469	4,284	0	0	0
10-14	7,310	3,862	3,448	7,273	3,826	3,447	37	36	1
15-19	4,982	2,481	2,501	4,888	2,406	2,482	94	75	19
20-24	3,237	1,452	1,785	3,180	1,413	1,767	57	39	18
25-29	3,399	1,494	1,905	3,345	1,446	1,899	54	48	6
30-34	3,917	1,935	1,982	3,866	1,891	1,975	51	44	7
35-39	2,811	1,408	1,403	2,792	1,395	1,397	19	13	6
40-44	2,616	1,173	1,443	2,593	1,152	1,441	23	21	2
45-49	1,975	860	1,115	1,962	849	1,113	13	11	2
50-54	2,032	871	1,161	2,028	871	1,157	4	0	4
55-59	1,315	591	724	1,309	589	720	6	2	4
60-64	1,520	720	800	1,516	719	797	4	1	3
65-69	882	443	439	880	443	437	2	0	2
70-74	734	351	383	734	351	383	0	0	0
75 +	939	433	506	938	432	506	1	1	0

POPULATION

Table 1.2
Lautem: Population in private households by sex according to single ages

Single age	Sex		
	Total	Male	Female

Single age	Sex		
	Total	Male	Female

Total	55,921	27,336	28,585
0	2,022	1,021	1,001
1	2,016	1,038	978
2	1,956	1,040	916
3	2,052	1,040	1,012
4	1,818	945	873
5	1,698	849	849
6	1,772	903	869
7	1,785	902	883
8	1,786	916	870
9	1,712	899	813
10	1,728	909	819
11	1,359	718	641
12	1,575	840	735
13	1,292	676	616
14	1,319	683	636
15	1,028	501	527
16	1,197	587	610
17	997	506	491
18	928	479	449
19	738	333	405

20	836	382	454
21	630	277	353
22	583	252	331
23	556	255	301
24	575	247	328
25	608	266	342
26	592	248	344
27	657	281	376
28	720	310	410
29	768	341	427
30	1,014	458	556
31	612	284	328
32	930	473	457
33	568	298	270
34	742	378	364
35	831	441	390
36	529	296	233
37	419	210	209
38	499	232	267
39	514	216	298

continued

POPULATION

Table 1.2 (continued)

Table 1.2
Lautem: Population in private households by sex according to single ages

Single age	Sex		
	Total	Male	Female
40	689	295	394
41	441	219	222
42	590	260	330
43	380	160	220
44	493	218	275
45	507	219	288
46	345	155	190
47	326	143	183
48	398	160	238
49	386	172	214
50	570	226	344
51	304	127	177
52	436	182	254
53	273	129	144
54	445	207	238
55	267	130	137
56	248	113	135
57	224	95	129
58	296	131	165
59	274	120	154

Single age	Sex		
	Total	Male	Female
60	448	199	249
61	199	98	101
62	325	160	165
63	201	99	102
64	343	163	180
65	266	130	136
66	109	54	55
67	199	111	88
68	169	76	93
69	137	72	65
70	235	127	108
71	95	51	44
72	171	67	104
73	98	48	50
74	135	58	77
75	133	54	79
76	59	27	32
77	51	28	23
78	81	39	42
79	47	20	27

continued

POPULATION

Table 1.2 (continued)

Table 1.2
Lautem: Population in private households by sex according to single ages

Single age	Sex		
	Total	Male	Female
80	127	55	72
81	43	20	23
82	71	41	30
83	26	13	13
84	65	26	39
85	32	11	21
86	22	16	6
87	20	11	9
88	13	7	6
89	21	10	11
90 +	127	54	73

POPULATION

Table 1.3
Lautem: Population in private households by sex according to sub-district and suco

Geographic level	Sex			Geographic level	Sex		
	Total	Male	Female		Total	Male	Female
Total	55,921	27,336	28,585	Sub District Lospalos	25,417	12,497	12,920
Sub District Iliomar	6,726	3,164	3,562	Bauro	2,872	1,398	1,474
Ailebere	823	376	447	Fuiloro *	12,612	6,328	6,284
Cainliu	1,437	705	732	Home	1,392	707	685
Fuat	506	231	275	Cacavem	879	399	480
Iliomar I	1,210	583	627	Leuro	703	324	379
Iliomar II	1,265	590	675	Lore I	2,299	1,074	1,225
Trilolo	1,485	679	806	Lore II	628	285	343
Sub District Lautem	13,866	6,774	7,092	Muapitine	1,210	601	609
Baduro	1,278	623	655	Raca	1,149	568	581
Com	2,248	1,049	1,199	Souro	1,673	813	860
Daudare	1,295	633	662	Sub District Luro	6,205	3,131	3,074
Euquisi	864	447	417	Afabubu	507	255	252
Ililai	697	341	356	Baricafa	838	413	425
Maina I	846	397	449	Cotamutu	1,842	946	896
Maina II	1,930	931	999	Lacawa	703	354	349
Pairara	1,554	761	793	Luro	1,847	926	921
Parlamento	2,188	1,116	1,072	Wairoce	468	237	231
Serelau	966	476	490	Sub District Tutuala	3,707	1,770	1,937
				Mehara	2,368	1,152	1,216
				Tutuala	1,339	618	721

* Urban Suco

Social Characteristics

Table 2.1
Lautem: Population in private households, 15 years and older, by marital status according to sex and age groups

Sex and age group	Marital status					
	Total	Never married	Married	Widowed	Divorced	Separated
Both sexes	30,031	8,160	18,515	3,023	166	167
15-19	4,888	4,622	251	12	2	1
20-24	3,180	1,882	1,256	22	8	12
25-29	3,345	797	2,475	41	14	18
30-34	3,866	424	3,285	89	33	35
35-39	2,792	162	2,458	137	17	18
40-44	2,593	89	2,228	229	23	24
45-49	1,962	52	1,596	272	22	20
50-54	2,028	35	1,582	392	13	6
55-59	1,309	16	985	289	11	8
60-64	1,516	16	1,034	443	10	13
65-69	880	14	570	282	6	8
70-74	734	14	367	347	5	1
75 +	938	37	428	468	2	3
Male	13,957	4,458	8,804	618	38	39
15-19	2,406	2,377	24	5	0	0
20-24	1,413	1,119	284	8	0	2
25-29	1,446	505	922	13	4	2
30-34	1,891	248	1,610	17	4	12
35-39	1,395	92	1,266	30	3	4
40-44	1,152	32	1,077	33	4	6

continued

Table 2.1 (continued)

Table 2.1
Lautem: Population in private households, 15 years and older, by marital status according to sex and age groups

Sex and age group	Marital status					
	Total	Never married	Married	Widowed	Divorced	Separated
45-49	849	20	783	36	6	4
50-54	871	17	794	55	5	0
55-59	589	9	525	49	4	2
60-64	719	10	606	96	4	3
65-69	443	6	359	72	3	3
70-74	351	8	247	95	1	0
75 +	432	15	307	109	0	1
Female	16,074	3,702	9,711	2,405	128	128
15-19	2,482	2,245	227	7	2	1
20-24	1,767	763	972	14	8	10
25-29	1,899	292	1,553	28	10	16
30-34	1,975	176	1,675	72	29	23
35-39	1,397	70	1,192	107	14	14
40-44	1,441	57	1,151	196	19	18
45-49	1,113	32	813	236	16	16
50-54	1,157	18	788	337	8	6
55-59	720	7	460	240	7	6
60-64	797	6	428	347	6	10
65-69	437	8	211	210	3	5
70-74	383	6	120	252	4	1
75 +	506	22	121	359	2	2

Table 2.2
Lautem: Population in private households, 6 years and older, by religion according to sex and age groups

Sex and age group	Religion							
	Total	Catholic	Islam	Budhist	Hindu	Protestant Evangelical	Traditional	Other
Both sexes	44,359	42,844	106	13	5	1,186	194	11
6-9	7,055	6,835	17	1	0	156	43	3
10-14	7,273	7,059	14	1	1	172	26	0
15-19	4,888	4,765	5	2	0	113	3	0
20-24	3,180	3,085	14	3	0	75	3	0
25-29	3,345	3,249	7	4	1	82	2	0
30-34	3,866	3,755	14	1	0	88	7	1
35-39	2,792	2,731	4	0	0	51	4	2
40-44	2,593	2,505	8	0	0	72	7	1
45-49	1,962	1,911	5	0	0	40	5	1
50-54	2,028	1,935	3	0	0	79	9	2
55-59	1,309	1,247	3	0	1	49	9	0
60-64	1,516	1,421	4	1	1	73	16	0
65-69	880	816	6	0	1	43	14	0
70-74	734	684	1	0	0	33	16	0
75 +	938	846	1	0	0	60	30	1
Male	21,403	20,648	52	12	3	571	109	8
6-9	3,620	3,513	7	1	0	72	25	2
10-14	3,826	3,711	10	0	1	88	16	0
15-19	2,406	2,339	3	2	0	59	3	0
20-24	1,413	1,367	7	3	0	34	2	0
25-29	1,446	1,395	0	4	1	45	1	0
30-34	1,891	1,836	10	1	0	38	5	1
35-39	1,395	1,359	2	0	0	30	2	2

continued

Table 2.2 (continued)

Table 2.2
Lautem: Population in private households, 6 years and older, by religion according to sex and age groups

Sex and age group	Religion							
	Total	Catholic	Islam	Budhist	Hindu	Protestant Evangelical	Traditional	Other
40-44	1,152	1,112	3	0	0	33	3	1
45-49	849	834	1	0	0	12	2	0
50-54	871	835	2	0	0	26	6	2
55-59	589	561	1	0	0	22	5	0
60-64	719	677	1	1	0	33	7	0
65-69	443	407	4	0	1	25	6	0
70-74	351	324	1	0	0	18	8	0
75 +	432	378	0	0	0	36	18	0
Female	22,956	22,196	54	1	2	615	85	3
6-9	3,435	3,322	10	0	0	84	18	1
10-14	3,447	3,348	4	1	0	84	10	0
15-19	2,482	2,426	2	0	0	54	0	0
20-24	1,767	1,718	7	0	0	41	1	0
25-29	1,899	1,854	7	0	0	37	1	0
30-34	1,975	1,919	4	0	0	50	2	0
35-39	1,397	1,372	2	0	0	21	2	0
40-44	1,441	1,393	5	0	0	39	4	0
45-49	1,113	1,077	4	0	0	28	3	1
50-54	1,157	1,100	1	0	0	53	3	0
55-59	720	686	2	0	1	27	4	0
60-64	797	744	3	0	1	40	9	0
65-69	437	409	2	0	0	18	8	0
70-74	383	360	0	0	0	15	8	0
75 +	506	468	1	0	0	24	12	1

Table 2.3
Lautem: Population in private households, 6 years and older according to mother tongue

Mother tongue	Age group															
	Total	6-9	10-14	15-19	20-24	25-29	30-34	35-39	40-44	45-49	50-54	55-59	60-64	65-69	70-74	75 +
Total	44,359	7,055	7,273	4,888	3,180	3,345	3,866	2,792	2,593	1,962	2,028	1,309	1,516	880	734	938
Portuguese	7	0	2	0	0	1	2	0	0	0	0	1	1	0	0	0
Tetum	279	47	47	23	22	25	42	35	15	8	5	4	2	1	3	0
Indonesian	75	12	12	7	6	13	14	6	2	1	1	0	0	0	0	1
English	4	0	0	1	1	0	0	0	0	0	1	1	0	0	0	0
Adabe	0	0	0	0	0	0	0	0	0	0	0	0	0	0	0	0
Atauran	4	1	0	0	0	1	1	0	0	1	0	0	0	0	0	0
Atoni	0	0	0	0	0	0	0	0	0	0	0	0	0	0	0	0
Baikenu	2	0	1	0	1	0	0	0	0	0	0	0	0	0	0	0
Bekais	0	0	0	0	0	0	0	0	0	0	0	0	0	0	0	0
Bunak	5	1	0	0	1	1	0	0	1	0	1	0	0	0	0	0
Dadu'a	23	4	4	0	1	2	0	3	2	3	1	0	0	0	0	3
Fataluku	27,721	4,471	4,626	3,140	2,069	2,129	2,297	1,686	1,520	1,160	1,254	784	971	575	462	577
Galoli	16	2	4	0	1	1	2	0	0	4	0	0	2	0	0	0
Habun	2	0	0	0	0	0	1	0	0	1	0	0	0	0	0	0
Idalaka	0	0	0	0	0	0	0	0	0	0	0	0	0	0	0	0
Idate	2	0	0	0	0	0	0	1	0	1	0	0	0	0	0	0
Isni	0	0	0	0	0	0	0	0	0	0	0	0	0	0	0	0
Kairui	3	0	1	0	1	1	0	0	0	0	0	0	0	0	0	0

continued

Table 2.3 (continued)

Table 2.3
Lautem: Population in private households, 6 years and older according to mother tongue

Mother tongue	Age group															
	Total	6-9	10-14	15-19	20-24	25-29	30-34	35-39	40-44	45-49	50-54	55-59	60-64	65-69	70-74	75 +
Kawaimina	0	0	0	0	0	0	0	0	0	0	0	0	0	0	0	0
Kemák	18	3	0	1	2	3	2	2	2	1	1	0	0	0	0	1
Lakalei	7	0	2	2	0	1	0	0	0	1	1	0	0	0	0	0
Lolein	8	1	4	3	0	0	0	0	0	0	0	0	0	0	0	0
Makalero	5,559	832	858	506	385	386	549	379	363	287	253	176	197	115	105	168
Makasai	10,057	1,591	1,638	1,135	628	718	892	632	650	472	495	334	336	187	163	186
Makuva	4	1	0	0	0	1	0	1	0	0	0	1	0	0	0	0
Mambai	25	2	2	5	1	0	5	1	5	2	2	0	0	0	0	0
Midiki	3	0	0	0	1	1	0	0	0	0	0	1	0	0	0	0
Nanaek	0	0	0	0	0	0	0	0	0	0	0	0	0	0	0	0
Naueti	8	1	0	0	1	1	0	5	0	0	0	0	0	0	0	0
Rahesuk	3	2	0	0	0	0	0	0	0	1	0	0	0	0	0	0
Raklungu	0	0	0	0	0	0	0	0	0	0	0	0	0	0	0	0
Resuk	1	0	0	0	0	1	0	0	0	0	0	0	0	0	0	0
Tetum Prasa	406	74	63	49	46	39	41	28	25	18	7	7	5	1	1	2
Tetum-terik	54	5	6	10	8	8	6	4	1	1	4	0	0	1	0	0
Tokodede	12	2	0	2	1	0	3	1	2	0	1	0	0	0	0	0
Waima' a	4	0	0	0	0	1	2	1	0	0	0	0	0	0	0	0
Malay	15	1	1	2	1	3	2	4	1	0	0	0	0	0	0	0
Chinese	25	2	2	2	3	5	3	2	3	0	1	0	2	0	0	0
Other	7	0	0	0	0	3	2	1	1	0	0	0	0	0	0	0

Table 2.4
Lautem: Population in private households, 6 years and older, by capability
in official languages and sex according to age groups

Age group	Capability in official languages by sex														
	Portuguese			Tetum			Indonezia			English			None of these		
	Total	Male	Female	Total	Male	Female	Total	Male	Female	Total	Male	Female	Total	Male	Female
Total	17,344	9,800	7,544	27,928	15,162	12,766	27,214	14,616	12,598	7,434	4,212	3,222	14,204	5,278	8,926
6-9	1,653	813	840	2,939	1,443	1,496	2,602	1,255	1,347	260	140	120	3,789	1,997	1,792
10-14	4,436	2,324	2,112	5,820	3,073	2,747	5,637	2,973	2,664	868	474	394	1,135	580	555
15-19	3,627	1,810	1,817	4,444	2,207	2,237	4,519	2,232	2,287	2,182	1,074	1,108	288	126	162
20-24	1,694	836	858	2,701	1,270	1,431	2,814	1,288	1,526	1,264	655	609	322	109	213
25-29	1,266	633	633	2,786	1,307	1,479	2,932	1,344	1,588	986	518	468	347	83	264
30-34	1,272	772	500	2,928	1,627	1,301	3,127	1,696	1,431	858	560	298	625	162	463
35-39	916	627	289	1,804	1,130	674	1,914	1,200	714	457	343	114	747	153	594
40-44	789	579	210	1,321	873	448	1,346	896	450	226	181	45	1,081	203	878
45-49	529	421	108	836	555	281	769	539	230	141	107	34	1,017	237	780
50-54	453	362	91	779	526	253	630	463	167	80	74	6	1,168	310	858
55-59	236	202	34	454	313	141	331	247	84	51	43	8	810	256	554
60-64	193	177	16	457	347	110	278	227	51	26	23	3	1,028	352	676
65-69	120	108	12	261	202	59	152	126	26	20	9	11	599	228	371
70-74	83	70	13	187	132	55	84	66	18	3	2	1	534	212	322
75 +	77	66	11	211	157	54	79	64	15	12	9	3	714	270	444

Households

Table 3.1
Lautem: Population in private households by marital status according
to sex and relationship to the head of the household

Sex and relationship of the head of the household	Marital status					
	Total	Never married	Married	Widowed	Divorced	Separated
Both sexes	55,921	34,050	18,515	3,023	166	167
Head	12,998	606	9,633	2,500	127	132
Wife/Husband	8,399	0	8,399	0	0	0
Daughter/Son	29,814	29,604	133	41	21	15
Stepchild/adopted child	926	915	6	4	1	0
Daughter-in-law/son-in-law	117	49	42	24	0	2
Mother/Father	321	11	47	257	4	2
Sister/Brother	1,176	984	118	60	8	6
Grandchild	873	863	9	1	0	0
Grandparent	62	5	12	45	0	0
Other relative	1,159	952	103	89	5	10
Non relative	76	61	13	2	0	0
Male	27,336	17,837	8,804	618	38	39
Head	9,643	422	8,629	523	35	34
Wife/Husband	43	0	43	0	0	0
Daughter/Son	15,477	15,442	19	13	1	2
Stepchild/adopted child	476	471	2	3	0	0
Daughter-in-law/son-in-law	53	28	22	3	0	0

continued

HOUSEHOLDS

Table 3.1 (continued)

Table 3.1
Lautem: Population in private households by marital status according to sex and relationship to the head of the household

Sex and relationship of the head of the household	Marital status					
	Total	Never married	Married	Widowed	Divorced	Separated
Mother/Father	50	3	6	41	0	0
Sister/Brother	545	515	17	11	2	0
Grandchild	435	433	2	0	0	0
Grandparent	11	3	2	6	0	0
Other relative	557	485	51	18	0	3
Non relative	46	35	11	0	0	0
Female	28,585	16,213	9,711	2,405	128	128
Head	3,355	184	1,004	1,977	92	98
Wife/Husband	8,356	0	8,356	0	0	0
Daughter/Son	14,337	14,162	114	28	20	13
Stepchild/adopted child	450	444	4	1	1	0
Daughter-in-law/son-in-law	64	21	20	21	0	2
Mother/Father	271	8	41	216	4	2
Sister/Brother	631	469	101	49	6	6
Grandchild	438	430	7	1	0	0
Grandparent	51	2	10	39	0	0
Other relative	602	467	52	71	5	7
Non relative	30	26	2	2	0	0

HOUSEHOLDS

Table 3.2
Lautem: Head of private households by marital status according to sex and age groups

Sex and age group	Marital status					
	Total	Never married	Married	Widowed	Divorced	Separated
Both sexes	12,998	606	9,633	2,500	127	132
15-19	163	126	34	2	1	0
20-24	481	107	355	10	4	5
25-29	1,161	109	995	33	12	12
30-34	1,901	91	1,684	75	21	30
35-39	1,525	42	1,331	123	14	15
40-44	1,454	35	1,169	212	17	21
45-49	1,179	29	859	255	19	17
50-54	1,288	20	896	355	11	6
55-59	862	12	585	252	7	6
60-64	1,117	8	704	385	10	10
65-69	651	8	402	228	6	7
70-74	551	7	272	267	4	1
75 +	665	12	347	303	1	2
Male	9,643	422	8,629	523	35	34
15-19	97	82	15	0	0	0
20-24	355	80	270	4	0	1
25-29	991	91	886	10	4	0
30-34	1,687	70	1,588	13	4	12
35-39	1,312	31	1,246	29	3	3
40-44	1,121	17	1,064	31	3	6

continued

Table 3.2 (continued)

Table 3.2
Lautem: Head of private households by marital status according to sex and age groups

Sex and age group	Marital status					
	Total	Never married	Married	Widowed	Divorced	Separated
45-49	828	13	773	34	5	3
50-54	845	12	777	51	5	0
55-59	576	8	518	45	3	2
60-64	704	7	602	88	4	3
65-69	421	3	352	60	3	3
70-74	322	4	241	76	1	0
75 +	384	4	297	82	0	1
Female	3,355	184	1,004	1,977	92	98
15-19	66	44	19	2	1	0
20-24	126	27	85	6	4	4
25-29	170	18	109	23	8	12
30-34	214	21	96	62	17	18
35-39	213	11	85	94	11	12
40-44	333	18	105	181	14	15
45-49	351	16	86	221	14	14
50-54	443	8	119	304	6	6
55-59	286	4	67	207	4	4
60-64	413	1	102	297	6	7
65-69	230	5	50	168	3	4
70-74	229	3	31	191	3	1
75 +	281	8	50	221	1	1

HOUSEHOLDS

Table 3.3
Lautem: Private households by number of residents according
to sex and age group of the head of the household

Sex and age group	Number of residents							
	Total	1	2	3	4	5	6	7 +
Both sexes	12,998	1,659	2,088	1,937	1,640	1,614	1,454	2,606
15-19	163	36	47	36	17	9	5	13
20-24	481	52	119	139	95	48	19	9
25-29	1,161	79	158	272	273	203	113	63
30-34	1,901	81	151	255	285	414	347	368
35-39	1,525	58	102	142	164	234	293	532
40-44	1,454	86	107	128	135	165	217	616
45-49	1,179	103	154	138	126	124	175	359
50-54	1,288	177	220	187	157	130	106	311
55-59	862	152	184	124	109	98	54	141
60-64	1,117	240	296	215	122	85	58	101
65-69	651	164	182	117	64	47	27	50
70-74	551	190	170	82	38	31	15	25
75 +	665	241	198	102	55	26	25	18
Male	9,643	579	1,194	1,325	1,319	1,413	1,315	2,498
15-19	97	23	26	20	9	5	5	9
20-24	355	39	86	105	72	36	10	7
25-29	991	68	120	225	241	181	97	59
30-34	1,687	61	101	213	251	383	328	350
35-39	1,312	29	58	98	131	205	277	514
40-44	1,121	31	31	69	90	126	186	588

continued

HOUSEHOLDS

Table 3.3 (continued)

Table 3.3
Lautem: Private households by number of residents according
to sex and age group of the head of the household

Sex and age group	Number of residents							
	Total	1	2	3	4	5	6	7 +
45-49	828	24	57	64	83	105	147	348
50-54	845	30	87	91	121	114	99	303
55-59	576	43	97	74	84	91	49	138
60-64	704	61	168	146	106	71	56	96
65-69	421	43	119	90	53	45	24	47
70-74	322	58	114	56	31	28	13	22
75 +	384	69	130	74	47	23	24	17
Female	3,355	1,080	894	612	321	201	139	108
15-19	66	13	21	16	8	4	0	4
20-24	126	13	33	34	23	12	9	2
25-29	170	11	38	47	32	22	16	4
30-34	214	20	50	42	34	31	19	18
35-39	213	29	44	44	33	29	16	18
40-44	333	55	76	59	45	39	31	28
45-49	351	79	97	74	43	19	28	11
50-54	443	147	133	96	36	16	7	8
55-59	286	109	87	50	25	7	5	3
60-64	413	179	128	69	16	14	2	5
65-69	230	121	63	27	11	2	3	3
70-74	229	132	56	26	7	3	2	3
75 +	281	172	68	28	8	3	1	1

HOUSEHOLDS

Table 3.4
Lautem: Private households according to sub-district and suco

Geographic level	Households	Geographic level	Households
Total	12,998	Sub District Lospalos	5,619
Sub District Iliomar	1,625	Bauro	626
Ailebere	204	Fuiloro *	2,551
Cainliu	327	Home	319
Fuat	117	Cacavem	227
Iliomar I	299	Leuro	191
Iliomar II	314	Lore I	585
Trilolo	364	Lore II	155
Sub District Lautem	3,383	Muapitine	285
Baduro	317	Raca	277
Com	535	Souro	403
Daudare	335	Sub District Luro	1,478
Euquisi	235	Afabubu	129
Ililai	181	Baricafa	199
Maina I	205	Cotamutu	407
Maina II	486	Lacawa	167
Pairara	359	Luro	453
Parlamento	493	Wairoce	123
Serelau	237	Sub District Tutuala	893
		Mehara	564
		Tutuala	329
		* Urban Suco	

HOUSEHOLDS

Fertility and Mortality

Table 4.1
Lautem: Women in private households, 15 years and older, by number of children ever born according to sex of children and age of the woman and total number of children ever born according to sex of the children and age of woman

Sex of child and age group of mother	Number of children ever born														Total number of children	Children per woman
	Total	None	1	2	3	4	5	6	7	8	9	10	11	12+		
Children, both sexes	16,074	5,020	1,229	1,288	1,353	1,358	1,433	1,195	1,036	844	588	364	195	171	54,926	3.4
15-19	2,482	2,324	102	38	5	3	1	2	2	0	2	0	2	1	288	0.1
20-24	1,767	904	299	270	174	74	27	13	2	0	1	1	2	0	1,925	1.1
25-29	1,899	410	181	280	339	326	219	96	32	7	7	1	1	0	5,097	2.7
30-34	1,975	262	93	162	219	277	378	274	168	78	32	18	10	4	8,142	4.1
35-39	1,397	135	67	64	100	124	187	197	200	159	91	45	17	11	7,377	5.3
40-44	1,441	141	76	65	88	110	131	163	161	199	133	86	47	41	8,368	5.8
45-49	1,113	134	51	76	91	92	115	106	123	116	82	61	33	33	5,976	5.4
50-54	1,157	161	92	87	100	99	117	103	123	82	78	55	33	27	5,653	4.9
55-59	720	108	53	56	60	74	71	58	65	63	48	35	17	12	3,424	4.8
60-64	797	136	81	77	60	71	68	68	70	58	48	28	14	18	3,507	4.4
65-69	437	77	45	45	37	24	33	44	38	35	32	13	5	9	1,907	4.4
70-74	383	76	44	27	33	39	34	40	24	26	18	11	5	6	1,546	4.0
75 +	506	152	45	41	47	45	52	31	28	21	16	10	9	9	1,716	3.4

continued

Table 4.1 (continued)

Table 4.1
Lautem: Women in private households, 15 years and older, by number of children ever born according to sex of children and age of the woman and total number of children ever born according to sex of the children and age of woman

Sex of child and age group of mother	Number of children ever born														Total number of children	Children per woman
	Total	None	1	2	3	4	5	6	7	8	9	10	11	12+		
Children, Male	16,074	6,156	2,426	2,347	2,001	1,450	875	436	238	98	33	8	4	2	28,809	1.8
15-19	2,482	2,381	77	16	4	1	2	1	0	0	0	0	0	0	141	0.1
20-24	1,767	1,156	353	175	66	12	3	1	1	0	0	0	0	0	977	0.6
25-29	1,899	633	451	429	234	118	22	9	3	0	0	0	0	0	2,668	1.4
30-34	1,975	391	350	441	398	239	92	40	17	5	2	0	0	0	4,259	2.2
35-39	1,397	205	191	251	263	225	153	67	32	10	0	0	0	0	3,853	2.8
40-44	1,441	205	192	198	267	219	176	94	53	22	12	2	0	1	4,396	3.1
45-49	1,113	184	155	187	195	167	113	48	38	20	2	2	1	1	3,122	2.8
50-54	1,157	247	190	182	160	150	115	62	25	16	6	3	1	0	2,979	2.6
55-59	720	155	114	122	107	90	59	43	20	7	3	0	0	0	1,815	2.5
60-64	797	204	125	135	122	89	57	28	24	7	3	1	2	0	1,853	2.3
65-69	437	102	83	65	62	53	34	21	10	5	2	0	0	0	1,035	2.4
70-74	383	105	68	66	58	39	23	12	7	4	1	0	0	0	807	2.1
75 +	506	188	77	80	65	48	26	10	8	2	2	0	0	0	904	1.8

continued

Table 4.1 (continued)

Table 4.1
Lautem: Women in private households, 15 years and older, by number of children ever born according to sex of children and age of the woman and total number of children ever born according to sex of the children and age of woman

Sex of child and age group of mother	Number of children ever born														Total number of children	Children per woman
	Total	None	1	2	3	4	5	6	7	8	9	10	11	12+		
Children, Female	16,074	6,440	2,607	2,540	1,853	1,266	756	372	164	49	19	4	4	0	26,117	1.6
15-19	2,482	2,389	69	14	1	4	1	2	2	0	0	0	0	0	147	0.1
20-24	1,767	1,163	353	181	51	16	2	1	0	0	0	0	0	0	948	0.5
25-29	1,899	663	496	423	216	73	22	5	1	0	0	0	0	0	2,429	1.3
30-34	1,975	430	409	460	327	225	83	31	8	2	0	0	0	0	3,883	2.0
35-39	1,397	218	212	298	271	204	110	53	29	2	0	0	0	0	3,524	2.5
40-44	1,441	221	213	268	237	209	162	78	37	8	5	3	0	0	3,972	2.8
45-49	1,113	223	152	215	183	140	101	58	25	9	7	0	0	0	2,854	2.6
50-54	1,157	269	199	206	168	135	104	45	23	6	1	0	1	0	2,674	2.3
55-59	720	183	116	133	112	75	52	25	14	7	3	0	0	0	1,609	2.2
60-64	797	233	139	130	107	85	52	32	14	3	1	0	1	0	1,654	2.1
65-69	437	132	85	66	61	39	29	13	6	4	1	1	0	0	872	2.0
70-74	383	114	73	70	55	31	20	12	3	3	1	0	1	0	739	1.9
75 +	506	202	91	76	64	30	18	17	2	5	0	0	1	0	812	1.6

Table 4.2
Lautem: Women in private households, 15 years and older, by number of living children
according to sex of children and age of the woman and total number of living
children according to sex of the children and age of woman

Sex of child and age group of mother	Total	Never had a birth	Number of living children													Total number of children	Children per woman
			0	1	2	3	4	5	6	7	8	9	10	11	12+		
Children, both sexes	16,074	5,020	376	1,624	1,615	1,775	1,617	1,460	1,168	693	412	200	71	28	15	42,106	2.6
15-19	2,482	2,324	10	105	28	6	2	1	2	2	0	1	1	0	0	237	0.1
20-24	1,767	904	12	329	283	154	58	14	10	0	1	1	1	0	0	1,746	1.0
25-29	1,899	410	7	211	326	410	324	147	52	7	2	2	0	1	0	4,530	2.4
30-34	1,975	262	10	132	192	308	361	345	217	100	34	9	4	1	0	7,015	3.6
35-39	1,397	135	8	88	93	141	165	230	241	158	93	34	7	2	2	6,228	4.5
40-44	1,441	141	26	101	113	134	141	210	218	149	114	60	20	8	6	6,507	4.5
45-49	1,113	134	30	88	115	136	131	152	136	84	56	34	11	4	2	4,346	3.9
50-54	1,157	161	49	157	132	128	136	126	112	71	35	29	13	6	2	3,909	3.4
55-59	720	108	43	79	88	95	93	75	58	36	27	10	7	1	0	2,274	3.2
60-64	797	136	67	116	85	101	87	68	51	45	24	8	6	2	1	2,256	2.8
65-69	437	77	35	68	48	60	44	39	31	17	11	5	0	0	2	1,179	2.7
70-74	383	76	41	64	44	44	33	30	23	11	12	3	1	1	0	925	2.4
75 +	506	152	38	86	68	58	42	23	17	13	3	4	0	2	0	954	1.9

continued

Table 4.2 (continued)

Table 4.2
Lautem: Women in private households, 15 years and older, by number of living children
according to sex of children and age of the woman and total number of living
children according to sex of the children and age of woman

Sex of child and age group of mother	Total	Never had a birth	Number of living children													Total number of children	Children per woman
			0	1	2	3	4	5	6	7	8	9	10	11	12+		
Children, Male	16,074	6,156	679	3,023	2,608	1,845	1,027	462	192	64	15	3	0	0	0	21,939	1.4
15-19	2,482	2,381	9	78	8	4	1	1	0	0	0	0	0	0	0	115	0.0
20-24	1,767	1,156	28	358	163	52	6	4	0	0	0	0	0	0	0	884	0.5
25-29	1,899	633	33	507	426	216	67	13	3	1	0	0	0	0	0	2,365	1.2
30-34	1,975	391	55	410	497	365	171	58	25	2	1	0	0	0	0	3,645	1.8
35-39	1,397	205	28	242	313	258	210	93	36	10	2	0	0	0	0	3,249	2.3
40-44	1,441	205	61	257	261	298	186	103	47	17	3	3	0	0	0	3,384	2.3
45-49	1,113	184	57	236	237	194	116	50	23	11	5	0	0	0	0	2,261	2.0
50-54	1,157	247	88	263	210	155	104	60	22	5	3	0	0	0	0	2,055	1.8
55-59	720	155	51	179	137	99	54	29	13	3	0	0	0	0	0	1,210	1.7
60-64	797	204	94	167	145	91	52	26	11	6	1	0	0	0	0	1,184	1.5
65-69	437	102	52	109	76	51	29	12	2	4	0	0	0	0	0	630	1.4
70-74	383	105	59	88	65	30	18	9	6	3	0	0	0	0	0	482	1.3
75 +	506	188	64	129	70	32	13	4	4	2	0	0	0	0	0	475	0.9

continued

Table 4.2 (continued)

Table 4.2
Lautem: Women in private households, 15 years and older, by number of living children
according to sex of children and age of the woman and total number of living
children according to sex of the children and age of woman

Sex of child and age group of mother	Total	Never had a birth	Number of living children													Total number of children	Children per woman
			0	1	2	3	4	5	6	7	8	9	10	11	12+		
Children, Female	16,074	6,440	716	3,111	2,697	1,632	873	417	138	39	11	0	0	0	0	20,167	1.3
15-19	2,482	2,389	8	67	9	4	1	3	1	0	0	0	0	0	0	122	0.0
20-24	1,767	1,163	24	365	161	43	9	2	0	0	0	0	0	0	0	862	0.5
25-29	1,899	663	35	543	424	176	47	8	3	0	0	0	0	0	0	2,165	1.1
30-34	1,975	430	46	475	501	290	162	54	14	3	0	0	0	0	0	3,370	1.7
35-39	1,397	218	39	277	325	257	167	79	27	8	0	0	0	0	0	2,979	2.1
40-44	1,441	221	68	269	314	261	157	103	39	6	3	0	0	0	0	3,123	2.2
45-49	1,113	223	61	227	234	191	102	50	17	7	1	0	0	0	0	2,085	1.9
50-54	1,157	269	109	252	231	142	87	44	16	6	1	0	0	0	0	1,854	1.6
55-59	720	183	74	149	157	77	46	24	6	2	2	0	0	0	0	1,064	1.5
60-64	797	233	87	173	143	86	36	26	10	3	0	0	0	0	0	1,072	1.3
65-69	437	132	49	108	70	38	25	10	1	1	3	0	0	0	0	549	1.3
70-74	383	114	57	88	62	33	18	7	3	1	0	0	0	0	0	443	1.2
75 +	506	202	59	118	66	34	16	7	1	2	1	0	0	0	0	479	0.9

Table 4.3
Lautem: Women in private households by number of stillbirths according to age of woman

Age group	Number of still births										Total number of stillbirths
	Total	None	1	2	3	4	5	6	7	8	
Total	16,074	14,951	875	167	51	19	7	4	0	0	1,497
15-19	2,482	2,480	2	0	0	0	0	0	0	0	2
20-24	1,767	1,737	26	4	0	0	0	0	0	0	34
25-29	1,899	1,821	65	9	3	0	1	0	0	0	97
30-34	1,975	1,828	128	14	2	2	1	0	0	0	175
35-39	1,397	1,277	91	24	1	2	2	0	0	0	160
40-44	1,441	1,251	148	32	6	2	1	1	0	0	249
45-49	1,113	978	108	14	8	5	0	0	0	0	180
50-54	1,157	1,028	96	21	8	3	1	0	0	0	179
55-59	720	629	64	20	3	2	0	2	0	0	133
60-64	797	715	61	11	9	1	0	0	0	0	114
65-69	437	392	33	8	2	0	1	1	0	0	66
70-74	383	344	31	3	4	1	0	0	0	0	53
75 +	506	471	22	7	5	1	0	0	0	0	55

Table 4.4
Lautem: Women in private households, aged 15 to 54 by reported birth in
the 12 months prior to the census according to age groups

Age group	Total women	Women reporting births in past year
Total	13,231	2,626
15-19	2,482	107
20-24	1,767	457
25-29	1,899	703
30-34	1,975	714
35-39	1,397	381
40-44	1,441	194
45-49	1,113	54
50-54	1,157	16

Table 4.5
Lautem: Women in private households by age at first birth and median age at first birth and by year of occurrence

Age at first birth	Total	Quinquennium										1954 and earlier
		2004-2000	1999-1995	1994-1990	1989-1985	1984-1980	1979-1975	1974-1970	1969-1965	1964-1960	1959-1955	
Total	11054	1440	1767	1612	1305	1289	939	951	636	555	309	251
<15	135	3	12	9	20	15	15	18	22	10	6	5
15	347	25	34	33	47	41	51	42	23	24	19	8
16	493	47	56	65	60	68	54	64	32	27	15	5
17	609	72	99	102	73	62	62	42	42	27	19	9
18	836	117	125	148	80	111	74	79	35	28	12	27
19	1018	135	171	201	141	134	81	68	29	29	15	14
20	1076	167	187	194	119	134	68	89	38	52	10	18
21	931	130	187	160	124	96	82	65	42	31	11	3
22	852	127	167	150	96	86	72	60	39	27	15	13
23	769	123	158	110	98	89	52	50	32	36	12	9
24	643	88	126	74	83	85	56	46	29	31	9	16
25	589	98	107	77	62	56	45	42	42	32	20	8
26	455	66	70	49	51	58	25	60	31	20	14	11
27	388	57	55	43	43	43	42	28	35	17	20	5
28	329	51	51	42	31	36	22	37	23	24	6	6
29	256	37	34	25	31	22	19	26	27	20	11	4
30+	1328	97	128	130	146	153	119	135	115	120	95	90
Median age at first birth	21.1	21.2	21.1	20.3	20.9	20.8	20.8	21.1	22.5	22.6	24.6	23.8

Table 4.6
Lautem: Population in private households by survival of parents according to age groups

Age group	Survival of parents							
	Total	Father		Mother		Both alive	One alive	Both deceased
		Alive	Deceased	Alive	Deceased			
Total	55,921	36,864	19,057	41,061	14,860	34,092	9,741	12,088
0-4	9,864	9,715	149	9,783	81	9,641	216	7
5-9	8,753	8,370	383	8,578	175	8,223	502	28
10-14	7,273	6,704	569	7,018	255	6,494	734	45
15-19	4,888	4,182	706	4,546	342	3,930	868	90
20-24	3,180	2,186	994	2,691	489	1,928	1,021	231
25-29	3,345	1,801	1,544	2,347	998	1,388	1,372	585
30-34	3,866	1,635	2,231	2,325	1,541	1,128	1,704	1,034
35-39	2,792	941	1,851	1,381	1,411	588	1,146	1,058
40-44	2,593	644	1,949	1,044	1,549	390	908	1,295
45-49	1,962	291	1,671	574	1,388	153	559	1,250
50-54	2,028	187	1,841	392	1,636	93	393	1,542
55-59	1,309	80	1,229	168	1,141	42	164	1,103
60-64	1,516	47	1,469	103	1,413	36	78	1,402
65-69	880	27	853	49	831	16	44	820
70-74	734	14	720	23	711	11	15	708
75 +	938	40	898	39	899	31	17	890



Education and Literacy

Table 5.1
Lautem: Population in private households, 6 years and older, by
age groups according to sex and educational attainment

Sex and education attainment	Age group													
	Total	6-9	10-14	15-19	20-24	25-29	30-34	35-39	40-44	45-49	50-54	55-59	60-64	65 +
Both sexes	44,359	7,055	7,273	4,888	3,180	3,345	3,866	2,792	2,593	1,962	2,028	1,309	1,516	2,552
No schooling	2,380	627	135	42	48	50	113	154	201	177	207	133	173	320
Primary school	15,839	3,260	5,590	1,769	788	1,003	1,020	624	612	386	337	164	124	162
Years of study														
1	2,572	1,804	448	36	22	20	26	40	54	28	31	21	12	30
2	2,771	1,018	1,033	74	50	58	88	114	114	75	63	24	19	41
3	2,748	345	1,361	189	93	123	127	110	140	76	70	41	42	31
4	2,485	93	1,269	274	141	122	147	78	120	89	74	29	24	25
5	2,166	0	946	491	156	208	179	79	41	21	16	13	8	8
6+	3,097	0	533	705	326	472	453	203	143	97	83	36	19	27
Secondary school	9,142	0	439	2,626	1,738	1,531	1,517	781	275	106	58	26	24	21
Years of study														
1	1,237	0	264	597	125	88	84	39	17	10	7	0	3	3
2	1,558	0	130	663	205	197	195	81	44	21	9	6	2	5
3	2,222	0	45	654	384	360	460	223	52	21	7	7	4	5
4	531	0	0	285	126	38	39	27	5	3	3	2	2	1
5	645	0	0	210	222	86	71	31	13	3	4	2	2	1
6+	2,949	0	0	217	676	762	668	380	144	48	28	9	11	6

continued

Table 5.1 (continued)

Table 5.1
Lautem: Population in private households, 6 years and older, by
age groups according to sex and educational attainment

Sex and education attainment	Age group													
	Total	6-9	10-14	15-19	20-24	25-29	30-34	35-39	40-44	45-49	50-54	55-59	60-64	65 +
Tertiary education	535	0	0	29	98	124	133	79	39	12	10	3	1	7
Years of study														
1	118	0	0	7	32	28	24	10	13	1	3	0	0	0
2	201	0	0	22	37	33	46	29	15	5	5	1	1	7
3	95	0	0	0	16	23	25	20	8	2	1	0	0	0
4	42	0	0	0	7	16	8	7	1	2	0	1	0	0
5+	79	0	0	0	6	24	30	13	2	2	1	1	0	0
Received diploma, either junior or senior high school	3,438	0	0	199	774	886	801	459	183	60	38	12	13	13
Received degree or certificate tertiary education	119	0	0	0	11	40	38	20	3	4	1	2	0	0
Education not stated	16,463	3,168	1,109	422	508	637	1,083	1,154	1,466	1,281	1,416	983	1,194	2,042

continued

Table 5.1 (continued)

Table 5.1
Lautem: Population in private households, 6 years and older, by
age groups according to sex and educational attainment

Sex and education attainment	Age group													
	Total	6-9	10-14	15-19	20-24	25-29	30-34	35-39	40-44	45-49	50-54	55-59	60-64	65 +
Male	21,403	3,620	3,826	2,406	1,413	1,446	1,891	1,395	1,152	849	871	589	719	1,226
No schooling	947	324	73	26	14	15	30	45	55	44	65	48	77	131
Primary school	8,383	1,636	2,964	880	312	403	491	318	386	307	280	145	111	150
Years of study														
1	1,370	939	237	20	7	7	16	18	29	19	21	17	12	28
2	1,496	483	564	36	25	25	43	61	69	61	52	23	16	38
3	1,510	166	720	99	43	53	68	55	88	61	53	37	38	29
4	1,383	48	689	144	66	53	66	36	76	67	66	26	23	23
5	1,097	0	492	249	67	83	94	35	26	17	12	10	4	8
6+	1,527	0	262	332	104	182	204	113	98	82	76	32	18	24
Secondary school	4,917	0	222	1,291	827	708	881	576	222	93	44	22	19	12
Years of study														
1	640	0	134	301	57	47	50	20	10	10	6	0	2	3
2	798	0	66	336	84	90	102	55	32	17	8	5	0	3
3	1,109	0	22	308	169	132	242	156	41	20	6	7	4	2
4	297	0	0	151	70	16	24	21	5	3	2	2	2	1
5	306	0	0	89	107	36	41	17	10	2	1	1	2	0
6+	1,767	0	0	106	340	387	422	307	124	41	21	7	9	3

continued

Table 5.1 (continued)

Table 5.1
Lautem: Population in private households, 6 years and older, by
age groups according to sex and educational attainment

Sex and education attainment	Age group													
	Total	6-9	10-14	15-19	20-24	25-29	30-34	35-39	40-44	45-49	50-54	55-59	60-64	65 +
Tertiary education	404	0	0	21	62	93	100	67	35	11	9	3	1	2
Years of study														
1	84	0	0	5	20	16	18	9	12	1	3	0	0	0
2	143	0	0	16	23	26	30	22	13	5	4	1	1	2
3	70	0	0	0	7	17	19	17	8	1	1	0	0	0
4	37	0	0	0	6	13	8	7	0	2	0	1	0	0
5+	70	0	0	0	6	21	25	12	2	2	1	1	0	0
Received diploma, either junior or senior high school	2,147	0	0	102	402	480	522	374	159	52	30	10	11	5
Received degree or certificate tertiary education	105	0	0	0	10	34	33	19	2	4	1	2	0	0
Education not stated	6,752	1,660	567	188	198	227	389	389	454	394	473	371	511	931

continued

Table 5.1 (continued)

Table 5.1
Lautem: Population in private households, 6 years and older, by
age groups according to sex and educational attainment

Sex and education attainment	Age group													
	Total	6-9	10-14	15-19	20-24	25-29	30-34	35-39	40-44	45-49	50-54	55-59	60-64	65 +
Female	22,956	3,435	3,447	2,482	1,767	1,899	1,975	1,397	1,441	1,113	1,157	720	797	1,326
No schooling	1,433	303	62	16	34	35	83	109	146	133	142	85	96	189
Primary school	7,456	1,624	2,626	889	476	600	529	306	226	79	57	19	13	12
Years of study														
1	1,202	865	211	16	15	13	10	22	25	9	10	4	0	2
2	1,275	535	469	38	25	33	45	53	45	14	11	1	3	3
3	1,238	179	641	90	50	70	59	55	52	15	17	4	4	2
4	1,102	45	580	130	75	69	81	42	44	22	8	3	1	2
5	1,069	0	454	242	89	125	85	44	15	4	4	3	4	0
6+	1,570	0	271	373	222	290	249	90	45	15	7	4	1	3
Secondary school	4,225	0	217	1,335	911	823	636	205	53	13	14	4	5	9
Years of study														
1	597	0	130	296	68	41	34	19	7	0	1	0	1	0
2	760	0	64	327	121	107	93	26	12	4	1	1	2	2
3	1,113	0	23	346	215	228	218	67	11	1	1	0	0	3
4	234	0	0	134	56	22	15	6	0	0	1	0	0	0
5	339	0	0	121	115	50	30	14	3	1	3	1	0	1
6+	1,182	0	0	111	336	375	246	73	20	7	7	2	2	3

continued

Table 5.1 (continued)

Table 5.1
Lautem: Population in private households, 6 years and older, by
age groups according to sex and educational attainment

Sex and education attainment	Age group													
	Total	6-9	10-14	15-19	20-24	25-29	30-34	35-39	40-44	45-49	50-54	55-59	60-64	65 +
Tertiary education	131	0	0	8	36	31	33	12	4	1	1	0	0	5
Years of study														
1	34	0	0	2	12	12	6	1	1	0	0	0	0	0
2	58	0	0	6	14	7	16	7	2	0	1	0	0	5
3	25	0	0	0	9	6	6	3	0	1	0	0	0	0
4	5	0	0	0	1	3	0	0	1	0	0	0	0	0
5+	9	0	0	0	0	3	5	1	0	0	0	0	0	0
Received diploma, either junior or senior high school	1,291	0	0	97	372	406	279	85	24	8	8	2	2	8
Received degree or certificate tertiary education	14	0	0	0	1	6	5	1	1	0	0	0	0	0
Education not stated	9,711	1,508	542	234	310	410	694	765	1,012	887	943	612	683	1,111

Table 5.2
Lautem: Population in private households, 6 years and older by literacy* in any of the official languages according to sex and age group

Sex and age group	Literacy		
	Total	Iliterate	Literate
Both sexes	44,359	27,121	17,238
6-9	7,055	6,444	611
10-14	7,273	4,754	2,519
15-19	4,888	1,313	3,575
20-24	3,180	845	2,335
25-29	3,345	990	2,355
30-34	3,866	1,553	2,313
35-39	2,792	1,473	1,319
40-44	2,593	1,772	821
45-49	1,962	1,480	482
50-54	2,028	1,640	388
55-59	1,309	1,107	202
60-64	1,516	1,370	146
65 +	2,552	2,380	172

* Literacy a person who know how to read and write

continued

Table 5.2 (continued)

Table 5.2
Lautem: Population in private households, 6 years and older by literacy* in any of the official languages according to sex and age group

Sex and age group	Literacy		
	Total	Illiterate	Literate
Male	21,403	11,988	9,415
6-9	3,620	3,327	293
10-14	3,826	2,506	1,320
15-19	2,406	647	1,759
20-24	1,413	338	1,075
25-29	1,446	360	1,086
30-34	1,891	595	1,296
35-39	1,395	512	883
40-44	1,152	560	592
45-49	849	472	377
50-54	871	574	297
55-59	589	420	169
60-64	719	597	122
65 +	1,226	1,080	146

continued

Table 5.2 (continued)

Table 5.2
Laitem: Population in private households, 6 years and older by literacy* in any of the official languages according to sex and age group

Sex and age group	Literacy		
	Total	Illiterate	Literate
Female	22,956	15,133	7,823
6-9	3,435	3,117	318
10-14	3,447	2,248	1,199
15-19	2,482	666	1,816
20-24	1,767	507	1,260
25-29	1,899	630	1,269
30-34	1,975	958	1,017
35-39	1,397	961	436
40-44	1,441	1,212	229
45-49	1,113	1,008	105
50-54	1,157	1,066	91
55-59	720	687	33
60-64	797	773	24
65 +	1,326	1,300	26

Table 5.3.a
Lautem: Population in private households, 6 years and older, by language capability
in portuguese according to sex and age group

Sex and age group	Language capability					
	Total	Do not speak, read or write	Speak only	Read only	Speak and read only	Speak, read and write
Both sexes	44,359	27,015	1,599	9,987	1,879	3,879
6-9	7,055	5,402	244	1,221	91	97
10-14	7,273	2,837	361	3,095	402	578
15-19	4,888	1,261	189	2,130	537	771
20-24	3,180	1,486	95	1,027	238	334
25-29	3,345	2,079	70	889	112	195
30-34	3,866	2,594	91	840	130	211
35-39	2,792	1,876	76	389	111	340
40-44	2,593	1,804	91	169	88	441
45-49	1,962	1,433	85	79	46	319
50-54	2,028	1,575	73	59	58	263
55-59	1,309	1,073	48	40	28	120
60-64	1,516	1,323	62	21	13	97
65 +	2,552	2,272	114	28	25	113

continued

Table 5.3.A (continued)

Table 5.3.a
Lautem: Population in private households, 6 years and older, by language capability
in portuguese according to sex and age group

Sex and age group	Language capability					
	Total	Do not speak, read or write	Speak only	Read only	Speak and read only	Speak, read and write
Male	21,403	11,603	982	5,154	1,050	2,614
6-9	3,620	2,807	127	601	31	54
10-14	3,826	1,502	177	1,645	212	290
15-19	2,406	596	110	1,061	259	380
20-24	1,413	577	41	464	138	193
25-29	1,446	813	41	391	62	139
30-34	1,891	1,119	45	491	82	154
35-39	1,395	768	47	233	73	274
40-44	1,152	573	71	114	59	335
45-49	849	428	65	50	38	268
50-54	871	509	61	35	44	222
55-59	589	387	41	25	23	113
60-64	719	542	57	21	11	88
65 +	1,226	982	99	23	18	104

continued

Table 5.3.a (continued)

Table 5.3.a
Lautem: Population in private households, 6 years and older, by language capability
in portuguese according to sex and age group

Sex and age group	Language capability					
	Total	Do not speak, read or write	Speak only	Read only	Speak and read only	Speak, read and write
Female	22,956	15,412	617	4,833	829	1,265
6-9	3,435	2,595	117	620	60	43
10-14	3,447	1,335	184	1,450	190	288
15-19	2,482	665	79	1,069	278	391
20-24	1,767	909	54	563	100	141
25-29	1,899	1,266	29	498	50	56
30-34	1,975	1,475	46	349	48	57
35-39	1,397	1,108	29	156	38	66
40-44	1,441	1,231	20	55	29	106
45-49	1,113	1,005	20	29	8	51
50-54	1,157	1,066	12	24	14	41
55-59	720	686	7	15	5	7
60-64	797	781	5	0	2	9
65 +	1,326	1,290	15	5	7	9

Table 5.3.b
Lautem: Population in private households, 6 years and older, by language capability
in Tetum according to sex and age group

Sex and age group	Language capability					
	Total	Do not speak, read or write	Speak only	Read only	Speak and read only	Speak, read and write
Both sexes	44,359	16,431	5,290	7,208	2,549	12,881
6-9	7,055	4,116	804	1,537	214	384
10-14	7,273	1,453	603	2,947	581	1,689
15-19	4,888	444	270	974	520	2,680
20-24	3,180	479	273	395	298	1,735
25-29	3,345	559	401	389	259	1,737
30-34	3,866	938	558	388	256	1,726
35-39	2,792	988	406	204	147	1,047
40-44	2,593	1,272	421	136	85	679
45-49	1,962	1,126	302	71	56	407
50-54	2,028	1,249	320	58	58	343
55-59	1,309	855	228	34	18	174
60-64	1,516	1,059	264	31	31	131
65 +	2,552	1,893	440	44	26	149

continued

Table 5.3.b (continued)

Table 5.3.b
Lautem: Population in private households, 6 years and older, by language capability
in Tetum according to sex and age group

Sex and age group	Language capability					
	Total	Do not speak, read or write	Speak only	Read only	Speak and read only	Speak, read and write
Male	21,403	6,241	2,930	3,461	1,359	7,412
6-9	3,620	2,177	421	745	101	176
10-14	3,826	753	340	1,547	317	869
15-19	2,406	199	141	476	256	1,334
20-24	1,413	143	130	131	144	865
25-29	1,446	139	195	118	108	886
30-34	1,891	264	301	134	140	1,052
35-39	1,395	265	217	86	81	746
40-44	1,152	279	248	64	60	501
45-49	849	294	153	44	39	319
50-54	871	345	176	30	48	272
55-59	589	276	124	21	15	153
60-64	719	372	187	25	27	108
65 +	1,226	735	297	40	23	131

continued

Table 5.3.b (continued)

Table 5.3.b
Lautem: Population in private households, 6 years and older, by language capability
in Tetum according to sex and age group

Sex and age group	Language capability					
	Total	Do not speak, read or write	Speak only	Read only	Speak and read only	Speak, read and write
Female	22,956	10,190	2,360	3,747	1,190	5,469
6-9	3,435	1,939	383	792	113	208
10-14	3,447	700	263	1,400	264	820
15-19	2,482	245	129	498	264	1,346
20-24	1,767	336	143	264	154	870
25-29	1,899	420	206	271	151	851
30-34	1,975	674	257	254	116	674
35-39	1,397	723	189	118	66	301
40-44	1,441	993	173	72	25	178
45-49	1,113	832	149	27	17	88
50-54	1,157	904	144	28	10	71
55-59	720	579	104	13	3	21
60-64	797	687	77	6	4	23
65 +	1,326	1,158	143	4	3	18

Table 5.3.c
Lautem: Population in private households, 6 years and older, by language capability in bahasa according to sex and age group

Sex and age group	Language capability					
	Total	Do not speak, read or write	Speak only	Read only	Speak and read only	Speak, read and write
Both sexes	44,359	17,145	3,776	5,347	2,312	15,779
6-9	7,055	4,453	508	1,403	246	445
10-14	7,273	1,636	475	2,356	680	2,126
15-19	4,888	369	175	529	370	3,445
20-24	3,180	366	214	158	165	2,277
25-29	3,345	413	310	144	180	2,298
30-34	3,866	739	464	189	216	2,258
35-39	2,792	878	363	149	142	1,260
40-44	2,593	1,247	403	131	112	700
45-49	1,962	1,193	244	87	58	380
50-54	2,028	1,398	217	72	60	281
55-59	1,309	978	126	44	28	133
60-64	1,516	1,238	132	39	18	89
65 +	2,552	2,237	145	46	37	87

continued

Table 5.3.c (continued)

Table 5.3.c
Lautem: Population in private households, 6 years and older, by language capability in bahasa according to sex and age group

Sex and age group	Language capability					
	Total	Do not speak, read or write	Speak only	Read only	Speak and read only	Speak, read and write
Male	21,403	6,787	2,142	2,705	1,228	8,541
6-9	3,620	2,365	268	670	110	207
10-14	3,826	853	271	1,233	371	1,098
15-19	2,406	174	83	282	183	1,684
20-24	1,413	125	95	61	82	1,050
25-29	1,446	102	159	51	70	1,064
30-34	1,891	195	252	68	103	1,273
35-39	1,395	195	212	60	72	856
40-44	1,152	256	234	63	67	532
45-49	849	310	134	50	45	310
50-54	871	408	141	55	49	218
55-59	589	342	85	33	23	106
60-64	719	492	99	36	16	76
65 +	1,226	970	109	43	37	67

continued

Table 5.3.c (continued)

Table 5.3.c
Lautem: Population in private households, 6 years and older, by language capability in bahasa according to sex and age group

Sex and age group	Language capability					
	Total	Do not speak, read or write	Speak only	Read only	Speak and read only	Speak, read and write
Female	22,956	10,358	1,634	2,642	1,084	7,238
6-9	3,435	2,088	240	733	136	238
10-14	3,447	783	204	1,123	309	1,028
15-19	2,482	195	92	247	187	1,761
20-24	1,767	241	119	97	83	1,227
25-29	1,899	311	151	93	110	1,234
30-34	1,975	544	212	121	113	985
35-39	1,397	683	151	89	70	404
40-44	1,441	991	169	68	45	168
45-49	1,113	883	110	37	13	70
50-54	1,157	990	76	17	11	63
55-59	720	636	41	11	5	27
60-64	797	746	33	3	2	13
65 +	1,326	1,267	36	3	0	20

Table 5.3.d
Lautem: Population in private households, 6 years and older, by language capability in english according to sex and age group

Sex and age group	Language capability					
	Total	Do not speak, read or write	Speak only	Read only	Speak and read only	Speak, read and write
Both sexes	44,359	36,925	858	4,511	965	1,100
6-9	7,055	6,795	90	133	21	16
10-14	7,273	6,405	132	565	81	90
15-19	4,888	2,706	194	1,360	352	276
20-24	3,180	1,916	121	775	154	214
25-29	3,345	2,359	78	579	139	190
30-34	3,866	3,008	107	515	95	141
35-39	2,792	2,335	53	270	49	85
40-44	2,593	2,367	31	128	28	39
45-49	1,962	1,821	19	79	20	23
50-54	2,028	1,948	12	41	16	11
55-59	1,309	1,258	10	27	4	10
60-64	1,516	1,490	3	16	4	3
65 +	2,552	2,517	8	23	2	2

continued

Table 5.3.d (continued)

Table 5.3.d
Lautem: Population in private households, 6 years and older, by language capability in english according to sex and age group

Sex and age group	Language capability					
	Total	Do not speak, read or write	Speak only	Read only	Speak and read only	Speak, read and write
Male	21,403	17,191	484	2,424	580	724
6-9	3,620	3,480	47	71	13	9
10-14	3,826	3,352	81	295	41	57
15-19	2,406	1,332	88	664	175	147
20-24	1,413	758	62	375	91	127
25-29	1,446	928	42	264	82	130
30-34	1,891	1,331	66	317	72	105
35-39	1,395	1,052	34	193	44	72
40-44	1,152	971	23	103	21	34
45-49	849	742	15	53	18	21
50-54	871	797	11	38	15	10
55-59	589	546	7	23	4	9
60-64	719	696	3	13	4	3
65 +	1,226	1,206	5	15	0	0

continued

Table 5.3.d (continued)

Table 5.3.d
Lautem: Population in private households, 6 years and older, by language capability in english according to sex and age group

Sex and age group	Language capability					
	Total	Do not speak, read or write	Speak only	Read only	Speak and read only	Speak, read and write
Female	22,956	19,734	374	2,087	385	376
6-9	3,435	3,315	43	62	8	7
10-14	3,447	3,053	51	270	40	33
15-19	2,482	1,374	106	696	177	129
20-24	1,767	1,158	59	400	63	87
25-29	1,899	1,431	36	315	57	60
30-34	1,975	1,677	41	198	23	36
35-39	1,397	1,283	19	77	5	13
40-44	1,441	1,396	8	25	7	5
45-49	1,113	1,079	4	26	2	2
50-54	1,157	1,151	1	3	1	1
55-59	720	712	3	4	0	1
60-64	797	794	0	3	0	0
65 +	1,326	1,311	3	8	2	2

Economic Activity

Table 6.1
Lautem: Population in private households, 15 years of age and older, by age groups
according to sex and current economic activity

Sex and economic activity	Age group													
	Total	15-19	20-24	25-29	30-34	35-39	40-44	45-49	50-54	55-59	60-64	65-69	70-74	75 +
Both sexes	30,031	4,888	3,180	3,345	3,866	2,792	2,593	1,962	2,028	1,309	1,516	880	734	938
In the labor force	17,421	514	1,360	2,192	2,725	2,096	1,930	1,516	1,566	985	1,155	592	419	371
Government	906	2	43	181	211	201	131	75	38	17	5	2	0	0
UN	196	1	19	43	73	39	11	9	1	0	0	0	0	0
NGO	180	0	11	54	36	33	17	7	14	2	3	1	1	1
Private industry	231	3	28	56	56	37	19	11	8	7	3	2	1	0
Self-employed	590	20	64	122	134	82	64	35	31	18	12	4	3	1
Subsistence farming and fishing	14,953	423	1,058	1,654	2,169	1,688	1,679	1,375	1,472	940	1,132	583	412	368
Looking and available	365	65	137	82	46	16	9	4	2	1	0	0	2	1
Not in the labor force	12,610	4,374	1,820	1,153	1,141	696	663	446	462	324	361	288	315	567
Student	5,040	3,972	918	99	28	2	1	4	5	1	3	1	4	2
Home duties	5,313	169	626	927	1,034	656	623	415	355	214	148	78	44	24
Retired/too old	1,185	0	0	0	0	0	0	0	51	70	175	171	234	484
Sick/disabled	282	17	31	11	21	15	15	14	28	22	21	29	19	39
No work available	591	146	193	94	46	16	17	9	14	14	11	6	9	16
Other	199	70	52	22	12	7	7	4	9	3	3	3	5	2

continued

Table 6.1 (continued)

Table 6.1
Lautem: Population in private households, 15 years of age and older, by age groups
according to sex and current economic activity

Sex and economic activity	Age group													
	Total	15-19	20-24	25-29	30-34	35-39	40-44	45-49	50-54	55-59	60-64	65-69	70-74	75 +
Male	13,957	2,406	1,413	1,446	1,891	1,395	1,152	849	871	589	719	443	351	432
In the labor force	10,354	257	715	1,300	1,833	1,367	1,134	829	838	554	655	375	259	238
Government	756	1	25	129	178	177	118	73	33	16	4	2	0	0
UN	158	1	8	33	62	35	10	8	1	0	0	0	0	0
NGO	137	0	7	37	26	28	14	6	13	2	2	1	1	0
Private industry	183	2	22	43	50	31	15	7	6	3	2	1	1	0
Self-employed	308	14	27	66	72	40	35	20	16	8	5	3	2	0
Subsistence farming and fishing	8,597	206	552	939	1,413	1,045	937	711	767	524	642	368	255	238
Looking and available	215	33	74	53	32	11	5	4	2	1	0	0	0	0
Not in the labor force	3,603	2,149	698	146	58	28	18	20	33	35	64	68	92	194
Student	2,673	2,036	544	65	20	2	0	1	2	0	1	0	2	0
Home duties	25	5	5	3	1	2	0	4	1	0	0	3	1	0
Retired/too old	358	0	0	0	0	0	0	0	5	16	47	46	73	171
Sick/disabled	144	10	17	6	10	8	11	8	13	10	11	15	10	15
No work available	301	71	101	56	22	12	3	5	6	8	3	3	4	7
Other	102	27	31	16	5	4	4	2	6	1	2	1	2	1

continued

Table 6.1 (continued)

Table 6.1
Lautem: Population in private households, 15 years of age and older, by age groups
according to sex and current economic activity

Sex and economic activity	Age group													
	Total	15-19	20-24	25-29	30-34	35-39	40-44	45-49	50-54	55-59	60-64	65-69	70-74	75 +
Female	16,074	2,482	1,767	1,899	1,975	1,397	1,441	1,113	1,157	720	797	437	383	506
In the labor force	7,067	257	645	892	892	729	796	687	728	431	500	217	160	133
Government	150	1	18	52	33	24	13	2	5	1	1	0	0	0
UN	38	0	11	10	11	4	1	1	0	0	0	0	0	0
NGO	43	0	4	17	10	5	3	1	1	0	1	0	0	1
Private industry	48	1	6	13	6	6	4	4	2	4	1	1	0	0
Self-employed	282	6	37	56	62	42	29	15	15	10	7	1	1	1
Subsistence farming and fishing	6,356	217	506	715	756	643	742	664	705	416	490	215	157	130
Looking and available	150	32	63	29	14	5	4	0	0	0	0	0	2	1
Not in the labor force	9,007	2,225	1,122	1,007	1,083	668	645	426	429	289	297	220	223	373
Student	2,367	1,936	374	34	8	0	1	3	3	1	2	1	2	2
Home duties	5,288	164	621	924	1,033	654	623	411	354	214	148	75	43	24
Retired/too old	827	0	0	0	0	0	0	0	46	54	128	125	161	313
Sick/disabled	138	7	14	5	11	7	4	6	15	12	10	14	9	24
No work available	290	75	92	38	24	4	14	4	8	6	8	3	5	9
Other	97	43	21	6	7	3	3	2	3	2	1	2	3	1

ECONOMIC ACTIVITY

Table 6.2
Lautem: Population in private households, 15 years of age, currently economically active,
by age groups according to sex and main occupation

Sex and main occupation	Age group													
	Total	15-19	20-24	25-29	30-34	35-39	40-44	45-49	50-54	55-59	60-64	65-69	70-74	75 +
Both sexes	17,421	514	1,360	2,192	2,725	2,096	1,930	1,516	1,566	985	1,155	592	419	371
Armed forces	16	0	1	5	3	3	4	0	0	0	0	0	0	0
Legislators, senior officials	40	0	1	3	5	7	8	11	1	3	1	0	0	0
Health professionals	1	0	0	1	0	0	0	0	0	0	0	0	0	0
Secondary and tertiary teachers	41	0	0	6	11	12	8	1	2	1	0	0	0	0
Religious leaders	1	0	0	0	1	0	0	0	0	0	0	0	0	0
Other professionals	11	0	1	1	6	1	0	2	0	0	0	0	0	0
Health technicians	27	0	1	9	4	2	5	3	2	0	0	0	0	1
Primary teachers	172	1	13	18	32	57	27	14	6	3	0	1	0	0
Other technicians/associates	1	0	0	0	0	0	0	0	1	0	0	0	0	0
Clerical workers	8	0	1	2	2	0	0	1	0	2	0	0	0	0
Hotel and restaurant workers	1	0	0	0	0	0	1	0	0	0	0	0	0	0
Travel attendants, guides	2	0	0	1	0	0	0	1	0	0	0	0	0	0
Sales people	57	2	6	9	11	11	10	4	2	1	1	0	0	0
Police officers	48	0	5	16	16	6	3	2	0	0	0	0	0	0
Security guards	5	0	1	3	0	1	0	0	0	0	0	0	0	0
Other service workers	5	0	0	2	3	0	0	0	0	0	0	0	0	0
Market farmer	1	0	0	0	0	0	0	1	0	0	0	0	0	0
Subsistence farmer	15,073	424	1,071	1,685	2,213	1,729	1,684	1,384	1,472	936	1,128	575	408	364
Other farmers	0	0	0	0	0	0	0	0	0	0	0	0	0	0
Comercial fishing	1	0	0	0	1	0	0	0	0	0	0	0	0	0
Subsistence fishing	131	4	4	21	15	15	14	10	12	8	10	8	6	4
Building trade	3	0	1	0	1	1	0	0	0	0	0	0	0	0
Handicraft workers	5	0	0	1	0	0	1	1	1	0	1	0	0	0

continued

Table 6.2 (continued)

Table 6.2
Laitem: Population in private households, 15 years of age, currently economically active,
by age groups according to sex and main occupation

Sex and main occupation	Age group													
	Total	15-19	20-24	25-29	30-34	35-39	40-44	45-49	50-54	55-59	60-64	65-69	70-74	75 +
Other trades	10	0	0	2	3	1	2	2	0	0	0	0	0	0
Mining and oil workers	6	1	1	3	1	0	0	0	0	0	0	0	0	0
Electricity workers	7	1	0	1	1	2	0	0	1	0	1	0	0	0
Drivers	44	0	2	12	12	10	5	2	0	1	0	0	0	0
Shipping and port workers	0	0	0	0	0	0	0	0	0	0	0	0	0	0
Other machine operators	12	0	0	0	7	2	2	0	1	0	0	0	0	0
Street vendors	5	0	0	1	0	2	2	0	0	0	0	0	0	0
Other informal vendors	28	0	4	7	4	4	3	1	0	3	1	1	0	0
Domestic helpers	4	0	1	1	0	1	0	1	0	0	0	0	0	0
Building caretakers, porters	0	0	0	0	0	0	0	0	0	0	0	0	0	0
Agricultural laborers	12	1	1	1	4	2	1	1	1	0	0	0	0	0
Other informal workers	4	0	0	2	1	1	0	0	0	0	0	0	0	0
Not Elsewhere Included	1,274	15	108	297	322	210	141	70	62	26	12	7	3	1
Not stated	365	65	137	82	46	16	9	4	2	1	0	0	2	1
Male	10,354	257	715	1,300	1,833	1,367	1,134	829	838	554	655	375	259	238
Armed forces	15	0	1	4	3	3	4	0	0	0	0	0	0	0
Legislators, senior officials	39	0	1	3	4	7	8	11	1	3	1	0	0	0
Health professionals	1	0	0	1	0	0	0	0	0	0	0	0	0	0
Secondary and tertiary teachers	34	0	0	3	9	10	8	1	2	1	0	0	0	0
Religious leaders	1	0	0	0	1	0	0	0	0	0	0	0	0	0
Other professionals	11	0	1	1	6	1	0	2	0	0	0	0	0	0
Health technicians	16	0	0	4	2	1	4	3	2	0	0	0	0	0
Primary teachers	143	0	8	11	30	50	22	14	4	3	0	1	0	0

continued

Table 6.2 (continued)

Table 6.2
Laitem: Population in private households, 15 years of age, currently economically active,
by age groups according to sex and main occupation

Sex and main occupation	Age group													
	Total	15-19	20-24	25-29	30-34	35-39	40-44	45-49	50-54	55-59	60-64	65-69	70-74	75 +
Other technicians/associates	1	0	0	0	0	0	0	0	1	0	0	0	0	0
Clerical workers	1	0	0	0	0	0	0	1	0	0	0	0	0	0
Hotel and restaurant workers	1	0	0	0	0	0	1	0	0	0	0	0	0	0
Travel attendants, guides	1	0	0	1	0	0	0	0	0	0	0	0	0	0
Sales people	21	0	1	4	4	3	7	2	0	0	0	0	0	0
Police officers	37	0	1	12	13	6	3	2	0	0	0	0	0	0
Security guards	4	0	0	3	0	1	0	0	0	0	0	0	0	0
Other service workers	3	0	0	1	2	0	0	0	0	0	0	0	0	0
Market farmer	1	0	0	0	0	0	0	1	0	0	0	0	0	0
Subsistence farmer	8,716	207	559	966	1,452	1,083	943	721	772	523	640	364	251	235
Other farmers	0	0	0	0	0	0	0	0	0	0	0	0	0	0
Commercial fishing	0	0	0	0	0	0	0	0	0	0	0	0	0	0
Subsistence fishing	63	3	2	9	8	5	9	3	3	4	5	4	5	3
Building trade	2	0	1	0	1	0	0	0	0	0	0	0	0	0
Handicraft workers	4	0	0	1	0	0	1	0	1	0	1	0	0	0
Other trades	3	0	0	1	0	0	1	1	0	0	0	0	0	0
Mining and oil workers	2	0	0	2	0	0	0	0	0	0	0	0	0	0
Electricity workers	4	1	0	1	1	1	0	0	0	0	0	0	0	0
Drivers	42	0	2	12	11	10	5	2	0	0	0	0	0	0
Shipping and port workers	0	0	0	0	0	0	0	0	0	0	0	0	0	0
Other machine operators	11	0	0	0	6	2	2	0	1	0	0	0	0	0
Street vendors	1	0	0	0	0	1	0	0	0	0	0	0	0	0
Other informal vendors	11	0	2	3	2	1	1	1	0	0	0	1	0	0
Domestic helpers	1	0	0	0	0	1	0	0	0	0	0	0	0	0
Building caretakers, porters	0	0	0	0	0	0	0	0	0	0	0	0	0	0

continued

Table 6.2 (continued)

Table 6.2
Laitem: Population in private households, 15 years of age, currently economically active,
by age groups according to sex and main occupation

Sex and main occupation	Age group													
	Total	15-19	20-24	25-29	30-34	35-39	40-44	45-49	50-54	55-59	60-64	65-69	70-74	75 +
Agricultural laborers	7	0	1	0	2	2	1	1	0	0	0	0	0	0
Other informal workers	2	0	0	1	1	0	0	0	0	0	0	0	0	0
Not Elsewhere Included	940	13	61	203	243	168	109	59	49	19	8	5	3	0
Not stated	215	33	74	53	32	11	5	4	2	1	0	0	0	0
Female	7,067	257	645	892	892	729	796	687	728	431	500	217	160	133
Armed forces	1	0	0	1	0	0	0	0	0	0	0	0	0	0
Legislators, senior officials	1	0	0	0	1	0	0	0	0	0	0	0	0	0
Health professionals	0	0	0	0	0	0	0	0	0	0	0	0	0	0
Secondary and tertiary teachers	7	0	0	3	2	2	0	0	0	0	0	0	0	0
Religious leaders	0	0	0	0	0	0	0	0	0	0	0	0	0	0
Other professionals	0	0	0	0	0	0	0	0	0	0	0	0	0	0
Health technicians	11	0	1	5	2	1	1	0	0	0	0	0	0	1
Primary teachers	29	1	5	7	2	7	5	0	2	0	0	0	0	0
Other technicians/associates	0	0	0	0	0	0	0	0	0	0	0	0	0	0
Clerical workers	7	0	1	2	2	0	0	0	0	2	0	0	0	0
Hotel and restaurant workers	0	0	0	0	0	0	0	0	0	0	0	0	0	0
Travel attendants, guides	1	0	0	0	0	0	0	1	0	0	0	0	0	0
Sales people	36	2	5	5	7	8	3	2	2	1	1	0	0	0
Police officers	11	0	4	4	3	0	0	0	0	0	0	0	0	0
Security guards	1	0	1	0	0	0	0	0	0	0	0	0	0	0
Other service workers	2	0	0	1	1	0	0	0	0	0	0	0	0	0

continued

Table 6.2 (continued)

Table 6.2
Laitem: Population in private households, 15 years of age, currently economically active,
by age groups according to sex and main occupation

Sex and main occupation	Age group													
	Total	15-19	20-24	25-29	30-34	35-39	40-44	45-49	50-54	55-59	60-64	65-69	70-74	75 +
Market farmer	0	0	0	0	0	0	0	0	0	0	0	0	0	0
Subsistence farmer	6,357	217	512	719	761	646	741	663	700	413	488	211	157	129
Other farmers	0	0	0	0	0	0	0	0	0	0	0	0	0	0
Comercial fishing	1	0	0	0	1	0	0	0	0	0	0	0	0	0
Subsistence fishing	68	1	2	12	7	10	5	7	9	4	5	4	1	1
Building trade	1	0	0	0	0	1	0	0	0	0	0	0	0	0
Handicraft workers	1	0	0	0	0	0	0	1	0	0	0	0	0	0
Other trades	7	0	0	1	3	1	1	1	0	0	0	0	0	0
Mining and oil workers	4	1	1	1	1	0	0	0	0	0	0	0	0	0
Electricity workers	3	0	0	0	0	1	0	0	1	0	1	0	0	0
Drivers	2	0	0	0	1	0	0	0	0	1	0	0	0	0
Shipping and port workers	0	0	0	0	0	0	0	0	0	0	0	0	0	0
Other machine operators	1	0	0	0	1	0	0	0	0	0	0	0	0	0
Street vendors	4	0	0	1	0	1	2	0	0	0	0	0	0	0
Other informal vendors	17	0	2	4	2	3	2	0	0	3	1	0	0	0
Domestic helpers	3	0	1	1	0	0	0	1	0	0	0	0	0	0
Building caretakers, porters	0	0	0	0	0	0	0	0	0	0	0	0	0	0
Agricultural laborers	5	1	0	1	2	0	0	0	1	0	0	0	0	0
Other informal workers	2	0	0	1	0	1	0	0	0	0	0	0	0	0
Not Elsewhere Included	334	2	47	94	79	42	32	11	13	7	4	2	0	1
Not stated	150	32	63	29	14	5	4	0	0	0	0	0	2	1

ECONOMIC ACTIVITY

Table 6.3
Lautem: Population in private households, 15 years and older, currently economically active by age group according to sex and industry

Sex and industry	Age group													
	Total	15-19	20-24	25-29	30-34	35-39	40-44	45-49	50-54	55-59	60-64	65-69	70-74	75 +
Both sexes		514	1,360	2,192	2,725	2,096	1,930	1,516	1,566	985	1,155	592	419	371
Agriculture	15,227	429	1,074	1,711	2,235	1,750	1,701	1,396	1,483	945	1,138	583	414	368
Forestry	3	0	0	2	0	0	1	0	0	0	0	0	0	0
Fishing	19	1	4	6	4	0	1	1	2	0	0	0	0	0
Mining, quarrying, oil	1	0	0	1	0	0	0	0	0	0	0	0	0	0
Manufacturing	9	1	1	1	3	2	0	0	1	0	0	0	0	0
Electricity	2	0	0	1	1	0	0	0	0	0	0	0	0	0
Construction	5	0	0	0	2	3	0	0	0	0	0	0	0	0
Wholesaling, Retailing, Selling	77	2	8	14	15	13	12	8	2	2	1	0	0	0
Hotels, Restaurants, and Cafes	3	0	1	0	0	0	1	1	0	0	0	0	0	0
Transport & Warehousing	24	0	2	7	7	5	2	1	0	0	0	0	0	0
Communications	1	0	0	0	0	0	0	0	1	0	0	0	0	0
Financial	0	0	0	0	0	0	0	0	0	0	0	0	0	0
Real Estate, Renting Property	2	0	0	1	0	1	0	0	0	0	0	0	0	0
Public Administration (government)	57	0	2	9	13	12	10	8	2	1	0	0	0	0
Defence	52	0	4	17	11	7	4	5	1	2	1	0	0	0
Education	213	0	10	26	43	64	40	14	10	4	1	1	0	0
Health & Social Services	25	0	1	8	6	1	5	2	1	0	0	0	0	1
Community Services	66	1	5	18	17	14	4	5	1	0	1	0	0	0
Recreational, Cultural and Sporting Activities	14	0	1	4	3	2	0	0	0	4	0	0	0	0
Private Households	30	1	5	6	7	7	2	0	2	0	0	0	0	0
U N Agencies, Diplomatic	1,226	14	105	278	312	199	138	71	58	26	13	8	3	1
Not stated	365	65	137	82	46	16	9	4	2	1	0	0	2	1

continued

Table 6.3 (continued)

Table 6.3
Lautem: Population in private households, 15 years and older,
currently economically active by age group according to sex and industry

Sex and industry	Age group													
	Total	15-19	20-24	25-29	30-34	35-39	40-44	45-49	50-54	55-59	60-64	65-69	70-74	75 +
Male		257	715	1,300	1,833	1,367	1,134	829	838	554	655	375	259	238
Agriculture	8,795	210	559	978	1,465	1,094	955	726	774	527	645	368	256	238
Forestry	2	0	0	1	0	0	1	0	0	0	0	0	0	0
Fishing	16	0	3	5	4	0	1	1	2	0	0	0	0	0
Mining, quarrying, oil	1	0	0	1	0	0	0	0	0	0	0	0	0	0
Manufacturing	4	0	1	0	1	1	0	0	1	0	0	0	0	0
Electricity	2	0	0	1	1	0	0	0	0	0	0	0	0	0
Construction	4	0	0	0	2	2	0	0	0	0	0	0	0	0
Wholesaling, Retailing, Selling	24	0	2	6	5	2	6	2	1	0	0	0	0	0
Hotels, Restaurants, and Cafes	2	0	0	0	0	0	1	1	0	0	0	0	0	0
Transport & Warehousing	21	0	2	6	6	4	2	1	0	0	0	0	0	0
Communications	1	0	0	0	0	0	0	0	1	0	0	0	0	0
Financial	0	0	0	0	0	0	0	0	0	0	0	0	0	0
Real Estate, Renting Property	1	0	0	0	0	1	0	0	0	0	0	0	0	0
Public Administration (government)	53	0	1	7	12	12	10	8	2	1	0	0	0	0
Defence	44	0	3	12	9	7	4	5	1	2	1	0	0	0
Education	177	0	4	17	38	56	35	14	8	4	0	1	0	0
Health & Social Services	17	0	0	4	5	1	4	2	1	0	0	0	0	0
Community Services	53	1	2	14	15	12	4	4	0	0	1	0	0	0
Recreational, Cultural and Sporting Activities	4	0	0	1	1	2	0	0	0	0	0	0	0	0
Private Households	12	0	2	4	3	3	0	0	0	0	0	0	0	0
U N Agencies, Diplomatic	906	13	62	190	234	159	106	61	45	19	8	6	3	0
Not stated	215	33	74	53	32	11	5	4	2	1	0	0	0	0

continued

Table 6.3 (continued)

Table 6.3
Laitem: Population in private households, 15 years and older, currently economically active by age group according to sex and industry

Sex and industry	Age group													
	Total	15-19	20-24	25-29	30-34	35-39	40-44	45-49	50-54	55-59	60-64	65-69	70-74	75 +
Female	7,067	257	645	892	892	729	796	687	728	431	500	217	160	133
Agriculture	6,432	219	515	733	770	656	746	670	709	418	493	215	158	130
Forestry	1	0	0	1	0	0	0	0	0	0	0	0	0	0
Fishing	3	1	1	1	0	0	0	0	0	0	0	0	0	0
Mining, quarrying, oil	0	0	0	0	0	0	0	0	0	0	0	0	0	0
Manufacturing	5	1	0	1	2	1	0	0	0	0	0	0	0	0
Electricity	0	0	0	0	0	0	0	0	0	0	0	0	0	0
Construction	1	0	0	0	0	1	0	0	0	0	0	0	0	0
Wholesaling, Retailing, Selling	53	2	6	8	10	11	6	6	1	2	1	0	0	0
Hotels, Restaurants, and Cafes	1	0	1	0	0	0	0	0	0	0	0	0	0	0
Transport & Warehousing	3	0	0	1	1	1	0	0	0	0	0	0	0	0
Communications	0	0	0	0	0	0	0	0	0	0	0	0	0	0
Financial	0	0	0	0	0	0	0	0	0	0	0	0	0	0
Real Estate, Renting Property	1	0	0	1	0	0	0	0	0	0	0	0	0	0
Public Administration (government)	4	0	1	2	1	0	0	0	0	0	0	0	0	0
Defence	8	0	1	5	2	0	0	0	0	0	0	0	0	0
Education	36	0	6	9	5	8	5	0	2	0	1	0	0	0
Health & Social Services	8	0	1	4	1	0	1	0	0	0	0	0	0	1
Community Services	13	0	3	4	2	2	0	1	1	0	0	0	0	0
Recreational, Cultural and Sporting Activities	10	0	1	3	2	0	0	0	0	4	0	0	0	0
Private Households	18	1	3	2	4	4	2	0	2	0	0	0	0	0
U N Agencies, Diplomatic	320	1	43	88	78	40	32	10	13	7	5	2	0	1
Not stated	150	32	63	29	14	5	4	0	0	0	0	0	2	1

ECONOMIC ACTIVITY

Table 6.4
Lautem: Population in private households, 15 years of age and older, current economically active, by number of days worked in the week prior to the census day according to sex and age groups

Sex and age group	Days worked							
	Total	1 day	2 days	3 days	4 days	5 days	6 days	7 days
Both sexes	17,056	25	126	187	548	2,053	13,276	841
15-19	449	2	3	13	40	55	309	27
20-24	1,223	5	9	21	59	142	879	108
25-29	2,110	3	14	18	55	282	1,627	111
30-34	2,679	2	20	24	80	354	2,085	114
35-39	2,080	1	17	19	54	258	1,660	71
40-44	1,921	1	13	20	47	224	1,522	94
45-49	1,512	3	12	6	48	189	1,167	87
50-54	1,564	0	8	17	52	181	1,239	67
55-59	984	0	6	9	35	115	786	33
60-64	1,155	2	7	17	40	121	913	55
65-69	592	0	5	10	16	53	477	31
70-74	417	2	6	6	10	41	334	18
75 +	370	4	6	7	12	38	278	25

continued

Table 6.4 (continued)

Table 6.4

Lautem: Population in private households, 15 years of age and older, current economically active, by number of days worked in the week prior to the census day according to sex and age groups

Sex and age group	Days worked							
	Total	1 day	2 days	3 days	4 days	5 days	6 days	7 days
Male	10,139	10	56	86	187	1,167	8,552	81
15-19	224	2	0	5	20	23	174	0
20-24	641	2	3	9	24	74	518	11
25-29	1,247	1	6	6	19	161	1,043	11
30-34	1,801	1	10	10	33	223	1,508	16
35-39	1,356	1	7	9	20	161	1,145	13
40-44	1,129	1	8	10	7	121	974	8
45-49	825	0	5	4	8	102	699	7
50-54	836	0	2	9	17	98	704	6
55-59	553	0	3	2	8	67	472	1
60-64	655	1	3	6	14	61	567	3
65-69	375	0	3	7	6	29	328	2
70-74	259	1	2	5	4	21	226	0
75 +	238	0	4	4	7	26	194	3

continued

ECONOMIC ACTIVITY

Table 6.4 (continued)

Table 6.4
Lautem: Population in private households, 15 years of age and older, current economically active, by number of days worked in the week prior to the census day according to sex and age groups

Sex and age group	Days worked							
	Total	1 day	2 days	3 days	4 days	5 days	6 days	7 days
Female	6,917	15	70	101	361	886	4,724	760
15-19	225	0	3	8	20	32	135	27
20-24	582	3	6	12	35	68	361	97
25-29	863	2	8	12	36	121	584	100
30-34	878	1	10	14	47	131	577	98
35-39	724	0	10	10	34	97	515	58
40-44	792	0	5	10	40	103	548	86
45-49	687	3	7	2	40	87	468	80
50-54	728	0	6	8	35	83	535	61
55-59	431	0	3	7	27	48	314	32
60-64	500	1	4	11	26	60	346	52
65-69	217	0	2	3	10	24	149	29
70-74	158	1	4	1	6	20	108	18
75 +	132	4	2	3	5	12	84	22

ECONOMIC ACTIVITY

Table 6.5
Lautem: Population in private households, 15 years of age and older, currently economically active,
by number of months worked prior to census day, according to sex and age groups

Sex and age group	Number of months worked													Not applicable
	Total	1	2	3	4	5	6	7	8	9	10	11	12	
Total	30,031	81	60	105	126	201	668	254	604	483	1,961	1,318	11,195	12,975
15-19	4,888	0	4	3	4	6	18	13	32	29	52	21	267	4,439
20-24	3,180	9	7	8	14	25	60	19	59	48	126	74	774	1,957
25-29	3,345	23	13	13	13	31	89	23	70	54	211	166	1,404	1,235
30-34	3,866	22	10	20	17	30	102	39	84	86	338	244	1,687	1,187
35-39	2,792	15	8	15	17	16	79	25	76	61	249	181	1,338	712
40-44	2,593	7	4	10	15	10	78	22	62	45	226	169	1,273	672
45-49	1,962	3	7	9	7	14	57	20	48	40	171	125	1,011	450
50-54	2,028	1	3	8	8	20	68	25	58	40	197	100	1,036	464
55-59	1,309	0	1	7	6	7	29	21	35	26	129	72	651	325
60-64	1,516	0	0	5	7	12	44	21	47	30	125	87	777	361
65-69	880	1	1	3	6	11	17	15	12	10	73	33	410	288
70-74	734	0	2	2	7	9	11	5	13	5	38	24	301	317
75 +	938	0	0	2	5	10	16	6	8	9	26	22	266	568

continued

Table 6.5 (continued)

Table 6.5
Lautem: Population in private households, 15 years of age and older, currently economically active,
by number of months worked prior to census day, according to sex and age groups

Sex and age group	Number of months worked													Not applicable
	Total	1	2	3	4	5	6	7	8	9	10	11	12	
Male	13,957	59	39	50	61	106	386	168	307	236	1,179	964	6,584	3,818
15-19	2,406	0	2	2	1	3	10	7	13	15	27	12	132	2,182
20-24	1,413	4	3	3	7	11	35	13	29	17	67	55	397	772
25-29	1,446	17	10	4	6	16	52	15	35	28	125	106	833	199
30-34	1,891	16	10	11	10	25	66	23	57	48	226	196	1,113	90
35-39	1,395	12	6	6	11	9	49	17	37	33	165	138	873	39
40-44	1,152	5	1	7	9	4	41	15	29	20	122	121	755	23
45-49	849	3	4	5	2	10	28	13	17	17	88	98	540	24
50-54	871	1	2	3	4	8	44	16	23	17	111	68	539	35
55-59	589	0	0	1	2	4	12	16	20	15	84	53	346	36
60-64	719	0	0	4	0	5	24	14	26	15	67	59	441	64
65-69	443	1	1	2	3	7	8	10	7	2	50	25	259	68
70-74	351	0	0	1	3	3	6	3	9	1	24	17	192	92
75 +	432	0	0	1	3	1	11	6	5	8	23	16	164	194

continued

ECONOMIC ACTIVITY

Table 6.5 (continued)

Table 6.5
Laudem: Population in private households, 15 years of age and older, currently economically active,
by number of months worked prior to census day, according to sex and age groups

Sex and age group	Number of months worked													Not applicable
	Total	1	2	3	4	5	6	7	8	9	10	11	12	
Female	16,074	22	21	55	65	95	282	86	297	247	782	354	4,611	9,157
15-19	2,482	0	2	1	3	3	8	6	19	14	25	9	135	2,257
20-24	1,767	5	4	5	7	14	25	6	30	31	59	19	377	1,185
25-29	1,899	6	3	9	7	15	37	8	35	26	86	60	571	1,036
30-34	1,975	6	0	9	7	5	36	16	27	38	112	48	574	1,097
35-39	1,397	3	2	9	6	7	30	8	39	28	84	43	465	673
40-44	1,441	2	3	3	6	6	37	7	33	25	104	48	518	649
45-49	1,113	0	3	4	5	4	29	7	31	23	83	27	471	426
50-54	1,157	0	1	5	4	12	24	9	35	23	86	32	497	429
55-59	720	0	1	6	4	3	17	5	15	11	45	19	305	289
60-64	797	0	0	1	7	7	20	7	21	15	58	28	336	297
65-69	437	0	0	1	3	4	9	5	5	8	23	8	151	220
70-74	383	0	2	1	4	6	5	2	4	4	14	7	109	225
75 +	506	0	0	1	2	9	5	0	3	1	3	6	102	374

ECONOMIC ACTIVITY

Table 6.6
Lautem: Private households with residents 15 years and older and number of persons 15 years and older by number of unpaid days worked for the suco community

	Total number of household with residents 15+ years	Total number of persons 15+ years	Total number of days worked	Days worked per person
Total	12,998	30,031	23,430	0.8
None	5,974	13,186		
1 day	1,557	3,478		
2 days	2,544	6,010		
3 days	254	677		
4 days	1,466	3,564		
5 days	147	386		
6 - 7 days	502	1,312		
8 - 9 days	283	711		
10 - 12 days	155	408		
More than 12	116	299		



Disability

Table 7.1
Lautem: Private households by presence of persons with disability (if any)
and type of disability according to sex and age of the head of the household

Sex and age group	Total	Households where no disabilities were found	With mental disability only	With physical disability only	Physical and mental disability present
Both sexes	12,998	11,722	233	990	53
15-19	163	160	1	2	0
20-24	481	462	4	15	0
25-29	1,161	1,103	7	50	1
30-34	1,901	1,791	22	86	2
35-39	1,525	1,401	31	87	6
40-44	1,454	1,323	20	105	6
45-49	1,179	1,053	23	94	9
50-54	1,288	1,145	40	95	8
55-59	862	768	25	66	3
60-64	1,117	1,003	16	95	3
65-69	651	548	20	78	5
70-74	551	451	12	81	7
75 +	665	514	12	136	3

continued

DISABILITY

Table 7.1 (continued)

Table 7.1
Lautem: Private households by presence of persons with disability (if any)
and type of disability according to sex and age of the head of the household

Sex and age group	Total	Households where no disabilities were found	With mental disability only	With physical disability only	Physical and mental disability present
Male	9,643	8,704	149	749	41
15-19	97	96	0	1	0
20-24	355	341	3	11	0
25-29	991	946	4	40	1
30-34	1,687	1,588	17	81	1
35-39	1,312	1,204	24	80	4
40-44	1,121	1,020	15	80	6
45-49	828	729	12	82	5
50-54	845	744	25	70	6
55-59	576	505	14	55	2
60-64	704	623	10	68	3
65-69	421	355	12	50	4
70-74	322	259	6	50	7
75 +	384	294	7	81	2

continued

DISABILITY

Table 7.1 (continued)

Table 7.1
Lautem: Private households by presence of persons with disability (if any)
and type of disability according to sex and age of the head of the household

Sex and age group	Total	Households where no disabilities were found	With mental disability only	With physical disability only	Physical and mental disability present
Female	3,355	3,018	84	241	12
15-19	66	64	1	1	0
20-24	126	121	1	4	0
25-29	170	157	3	10	0
30-34	214	203	5	5	1
35-39	213	197	7	7	2
40-44	333	303	5	25	0
45-49	351	324	11	12	4
50-54	443	401	15	25	2
55-59	286	263	11	11	1
60-64	413	380	6	27	0
65-69	230	193	8	28	1
70-74	229	192	6	31	0
75 +	281	220	5	55	1

DISABILITY

Housing

Table 8.1
Lautem: Private households by type of ownership of the dwelling according to construction material of floor, walls and roof

Material of floor, walls and roof	Type of ownership of the dwelling				
	Total	Individual or family owned	Community or suco owned	Government owned	Church property
Private households	12,998	12,726	25	233	14
Material of floors					
Concrete or tile	2,592	2,399	8	177	8
Wood	260	256	2	2	0
Soil	10,146	10,071	15	54	6
Materials of walls					
Concrete/brick	3,355	3,158	9	183	5
Wood	251	247	2	2	0
Bamboo	7,711	7,654	11	40	6
Corrugated iron	1,571	1,557	3	8	3
Clay	110	110	0	0	0
Material of roof					
Concrete/brick	40	39	0	1	0
Wood	13	13	0	0	0
Bamboo	3,128	3,116	7	4	1
Corrugated iron	9,687	9,435	18	221	13
Tiles	2	1	0	1	0
Asbestos	128	122	0	6	0

Table 8.2
Lautem: Private dwellings by type of ownership of the dwelling (occupied only)
according to construction material of floor, walls and roof

Material of floor, walls and roof	Type of ownership of the dwelling				
	Total	Individual or family owned	Community or suco owned	Government owned	Church property
Private dwellings	11,087	10,848	21	206	12
Material of floors					
Concrete or tile	2,223	2,043	8	165	7
Wood	239	235	2	2	0
Soil	8,625	8,570	11	39	5
Materials of walls					
Concrete/brick	2,863	2,682	8	169	4
Wood	217	213	2	2	0
Bamboo	6,575	6,535	8	27	5
Corrugated iron	1,340	1,326	3	8	3
Clay	92	92	0	0	0
Material of roof					
Concrete/brick	36	35	0	1	0
Wood	10	10	0	0	0
Bamboo	2,797	2,787	5	4	1
Corrugated iron	8,127	7,906	16	194	11
Tiles	2	1	0	1	0
Asbestos	115	109	0	6	0

Table 8.3.a
Lautem: Private households by construction material of floor according
to sex and age group of the head of the household

Sex and age group	Type construction material of floor			
	Total	Concrete or tile	Wood	Soil
Total	12,998	2,592	260	10,146
15-19	163	58	1	104
20-24	481	120	4	357
25-29	1,161	254	14	893
30-34	1,901	393	27	1,481
35-39	1,525	351	24	1,150
40-44	1,454	310	24	1,120
45-49	1,179	248	14	917
50-54	1,288	238	40	1,010
55-59	862	141	17	704
60-64	1,117	194	36	887
65-69	651	104	15	532
70-74	551	84	20	447
75 +	665	97	24	544
Male	9,643	1,995	177	7,471
15-19	97	32	1	64
20-24	355	82	2	271
25-29	991	209	13	769
30-34	1,687	342	23	1,322
35-39	1,312	311	23	978
40-44	1,121	251	17	853

continued

Table 8.3.A (continued)

Table 8.3.a
Lautem: Private households by construction material of floor according to sex and age group of the head of the household

Sex and age group	Type construction material of floor			
	Total	Concrete or tile	Wood	Soil
45-49	828	184	12	632
50-54	845	171	23	651
55-59	576	107	12	457
60-64	704	125	23	556
65-69	421	69	7	345
70-74	322	50	10	262
75 +	384	62	11	311
Female	3,355	597	83	2,675
15-19	66	26	0	40
20-24	126	38	2	86
25-29	170	45	1	124
30-34	214	51	4	159
35-39	213	40	1	172
40-44	333	59	7	267
45-49	351	64	2	285
50-54	443	67	17	359
55-59	286	34	5	247
60-64	413	69	13	331
65-69	230	35	8	187
70-74	229	34	10	185
75 +	281	35	13	233

Table 8.3.b
Lautem: Private households by construction material of walls according
to sex and age group of the head of the household

Sex and age group	Type construction material of walls					
	Total	Concrete or brick	Wood	Bamboo	Corrugated iron	Clay
Total	12,998	3,355	251	7,711	1,571	110
15-19	163	64	3	71	24	1
20-24	481	144	6	271	57	3
25-29	1,161	303	14	695	139	10
30-34	1,901	504	37	1,141	207	12
35-39	1,525	438	37	865	174	11
40-44	1,454	425	23	815	182	9
45-49	1,179	310	20	673	161	15
50-54	1,288	316	39	772	149	12
55-59	862	191	17	546	104	4
60-64	1,117	257	22	692	137	9
65-69	651	152	13	402	77	7
70-74	551	115	9	351	65	11
75 +	665	136	11	417	95	6
Male	9,643	2,584	187	5,673	1,126	73
15-19	97	39	2	43	12	1
20-24	355	100	4	210	40	1
25-29	991	250	14	598	121	8
30-34	1,687	442	36	1,019	178	12
35-39	1,312	391	29	738	146	8
40-44	1,121	349	14	614	138	6

continued

Table 8.3.b (continued)

Table 8.3.b
Lautem: Private households by construction material of walls according to sex and age group of the head of the household

Sex and age group	Type construction material of walls					
	Total	Concrete or brick	Wood	Bamboo	Corrugated iron	Clay
45-49	828	232	14	457	116	9
50-54	845	224	26	490	96	9
55-59	576	139	10	357	69	1
60-64	704	170	15	431	80	8
65-69	421	97	9	265	46	4
70-74	322	69	6	203	39	5
75 +	384	82	8	248	45	1
Female	3,355	771	64	2,038	445	37
15-19	66	25	1	28	12	0
20-24	126	44	2	61	17	2
25-29	170	53	0	97	18	2
30-34	214	62	1	122	29	0
35-39	213	47	8	127	28	3
40-44	333	76	9	201	44	3
45-49	351	78	6	216	45	6
50-54	443	92	13	282	53	3
55-59	286	52	7	189	35	3
60-64	413	87	7	261	57	1
65-69	230	55	4	137	31	3
70-74	229	46	3	148	26	6
75 +	281	54	3	169	50	5

Table 8.3.c
Lautem: Private households by construction material of roof according
to sex and age group construction material of roof

Sex and age group	Type construction material of roof						
	Total	Concrete or brick	Wood	Bamboo	Corrugated iron	Tiles	Asbestos
Total	12,998	40	13	3,128	9,687	2	128
15-19	163	2	0	24	136	1	0
20-24	481	4	0	110	366	0	1
25-29	1,161	0	1	235	913	0	12
30-34	1,901	4	3	430	1,438	0	26
35-39	1,525	7	0	340	1,166	0	12
40-44	1,454	2	2	309	1,126	0	15
45-49	1,179	9	2	273	886	1	8
50-54	1,288	6	0	319	949	0	14
55-59	862	3	0	233	613	0	13
60-64	1,117	0	2	285	815	0	15
65-69	651	1	0	199	447	0	4
70-74	551	1	1	167	380	0	2
75 +	665	1	2	204	452	0	6
Male	9,643	33	8	2,234	7,276	2	90
15-19	97	1	0	12	83	1	0
20-24	355	4	0	90	260	0	1
25-29	991	0	0	206	773	0	12
30-34	1,687	4	3	381	1,276	0	23
35-39	1,312	7	0	287	1,007	0	11
40-44	1,121	2	1	220	888	0	10

continued

Table 8.3.C (continued)

Table 8.3.c
Lautem: Private households by construction material of roof according to sex and age group construction material of roof

Sex and age group	Type construction material of roof						
	Total	Concrete or brick	Wood	Bamboo	Corrugated iron	Tiles	Asbestos
45-49	828	9	1	189	622	1	6
50-54	845	2	0	204	632	0	7
55-59	576	2	0	141	427	0	6
60-64	704	0	2	172	521	0	9
65-69	421	0	0	119	301	0	1
70-74	322	1	1	96	222	0	2
75 +	384	1	0	117	264	0	2
Female	3,355	7	5	894	2,411	0	38
15-19	66	1	0	12	53	0	0
20-24	126	0	0	20	106	0	0
25-29	170	0	1	29	140	0	0
30-34	214	0	0	49	162	0	3
35-39	213	0	0	53	159	0	1
40-44	333	0	1	89	238	0	5
45-49	351	0	1	84	264	0	2
50-54	443	4	0	115	317	0	7
55-59	286	1	0	92	186	0	7
60-64	413	0	0	113	294	0	6
65-69	230	1	0	80	146	0	3
70-74	229	0	0	71	158	0	0
75 +	281	0	2	87	188	0	4

Table 8.4
Lautem: Private households according to livestock kept and number
of persons and amount of livestock in those households

Animals	Household	Persons	Amount of livestock
Chickens	11,161	49,729	68,481
Pigs	10,523	47,733	29,628
Sheeps	448	2,025	2,924
Goats	2,006	9,976	7,833
Horses	2,318	11,701	5,383
Cattle	2,508	12,710	11,390
Buffalo	2,874	14,169	15,410

Table 8.5
Lautem: Private households according to crops cultivated and persons in those households

Crops	Households	Persons
Rice	5,526	24,481
Maize	10,854	47,892
Cassava	9,921	44,145
Vegetables	8,490	38,026
Fruit (seasonal)	9,081	40,506
Fruit (permanent)	9,025	40,109
Coffe	1,027	4,944
Coconut	10,420	46,239
Other seasonal crops	8,360	37,398
Other permanent crops	9,005	40,245



Migration

Table 9.1
Lautem: Population in private households by place of birth and present residence according to sex and age groups (life-time migration)

Total	Born in Lautem (non-migrants)	Born in Lautem and living in another district (out-migrants)	Living in Lautem and born in another district (in-migrants)	Born abroad (immigrants)	Unknown district of birth	Total residents
Total	54,195	6,515	1,128	258	340	55,921
0-4	9,566	313	141	56	101	9,864
5-9	8,554	326	133	30	36	8,753
10-14	7,112	397	118	13	30	7,273
15-19	4,758	1,017	90	10	30	4,888
20-24	3,052	1,527	87	28	13	3,180
25-29	3,187	1,150	95	44	19	3,345
30-34	3,702	706	110	38	16	3,866
35-39	2,658	383	99	19	16	2,792
40-44	2,483	222	76	11	23	2,593
45-49	1,905	137	44	2	11	1,962
50-54	1,961	138	44	2	21	2,028
55-59	1,284	62	20	1	4	1,309
60-64	1,475	49	30	3	8	1,516
65-69	861	34	16	0	3	880
70-74	720	24	11	0	3	734
75 +	917	30	14	1	6	938

continued

Table 9.1 (continued)

Table 9.1
Lautem: Population in private households by place of birth and present residence according to sex and age groups (life-time migration)

Total	Born in Lautem (non-migrants)	Born in Lautem and living in another district (out-migrants)	Living in Lautem and born in another district (in-migrants)	Born abroad (immigrants)	Unknown district of birth	Total residents
Male	26,528	3,806	532	116	160	27,336
0-4	4,928	161	79	31	46	5,084
5-9	4,360	173	71	17	21	4,469
10-14	3,737	223	62	7	20	3,826
15-19	2,348	560	38	5	15	2,406
20-24	1,377	917	25	7	4	1,413
25-29	1,395	747	32	11	8	1,446
30-34	1,834	435	39	12	6	1,891
35-39	1,330	222	50	11	4	1,395
40-44	1,086	122	44	10	12	1,152
45-49	814	69	28	1	6	849
50-54	839	79	21	1	10	871
55-59	577	35	9	1	2	589
60-64	703	20	13	2	1	719
65-69	432	16	10	0	1	443
70-74	346	12	4	0	1	351
75 +	422	15	7	0	3	432

continued

Table 9.1 (continued)

Table 9.1
Lautem: Population in private households by place of birth and present residence according to sex and age groups (life-time migration)

Total	Born in Lautem (non-migrants)	Born in Lautem and living in another district (out-migrants)	Living in Lautem and born in another district (in-migrants)	Born abroad (immigrants)	Unknown district of birth	Total residents
Female	27,667	2,709	596	142	180	28,585
0-4	4,638	152	62	25	55	4,780
5-9	4,194	153	62	13	15	4,284
10-14	3,375	174	56	6	10	3,447
15-19	2,410	457	52	5	15	2,482
20-24	1,675	610	62	21	9	1,767
25-29	1,792	403	63	33	11	1,899
30-34	1,868	271	71	26	10	1,975
35-39	1,328	161	49	8	12	1,397
40-44	1,397	100	32	1	11	1,441
45-49	1,091	68	16	1	5	1,113
50-54	1,122	59	23	1	11	1,157
55-59	707	27	11	0	2	720
60-64	772	29	17	1	7	797
65-69	429	18	6	0	2	437
70-74	374	12	7	0	2	383
75 +	495	15	7	1	3	506

MIGRATION

Table 9.2
Lautem: Population in private households by place of present residence
and residence in January 1999 according to age and sex groups

Total	Living in Lautem in 1999 and 2004 (non-migrants)	Living in Lautem in 1999 and in another district in 2004 (out-migrants)	Living in Lautem in 2004 an in another district in 1999 (in-migrants)	Living abroad in 1999 (immigrants)	Unknown district of residence in 1999	Total residents
Total	52,890	3,138	490	898	1,643	55,921
0-4	9,864	0	0	0	0	9,864
5-9	8,157	177	59	142	395	8,753
10-14	6,718	239	58	153	344	7,273
15-19	4,541	684	44	98	205	4,888
20-24	2,934	939	73	66	107	3,180
25-29	3,120	535	68	77	80	3,345
30-34	3,588	246	71	91	116	3,866
35-39	2,621	105	36	64	71	2,792
40-44	2,427	61	18	77	71	2,593
45-49	1,855	34	19	46	42	1,962
50-54	1,926	43	11	26	65	2,028
55-59	1,257	11	7	14	31	1,309
60-64	1,449	21	12	18	37	1,516
65-69	844	12	5	8	23	880
70-74	713	16	1	7	13	734
75 +	876	15	8	11	43	938

continued

Table 9.2 (continued)

Table 9.2
Lautem: Population in private households by place of present residence
and residence in January 1999 according to age and sex groups

Total	Living in Lautem in 1999 and 2004 (non-migrants)	Living in Lautem in 1999 and in another district in 2004 (out-migrants)	Living in Lautem in 2004 an in another district in 1999 (in-migrants)	Living abroad in 1999 (immigrants)	Unknown district of residence in 1999	Total residents
Male	25,814	1,826	259	431	832	27,336
0-4	5,084	0	0	0	0	5,084
5-9	4,161	98	33	66	209	4,469
10-14	3,544	143	32	79	171	3,826
15-19	2,244	355	21	47	94	2,406
20-24	1,312	564	24	23	54	1,413
25-29	1,335	338	31	40	40	1,446
30-34	1,741	150	44	45	61	1,891
35-39	1,311	70	25	27	32	1,395
40-44	1,063	38	13	40	36	1,152
45-49	794	15	10	21	24	849
50-54	816	20	7	16	32	871
55-59	563	5	3	5	18	589
60-64	687	8	5	9	18	719
65-69	421	7	3	5	14	443
70-74	342	8	1	2	6	351
75 +	396	7	7	6	23	432

continued

Table 9.2 (continued)

Table 9.2
Lautem: Population in private households by place of present residence
and residence in January 1999 according to age and sex groups

Total	Living in Lautem in 1999 and 2004 (non-migrants)	Living in Lautem in 1999 and in another district in 2004 (out-migrants)	Living in Lautem in 2004 an in another district in 1999 (in-migrants)	Living abroad in 1999 (immigrants)	Unknown district of residence in 1999	Total residents
Female	27,076	1,312	231	467	811	28,585
	4,780	0	0	0	0	4,780
0-4	3,996	79	26	76	186	4,284
5-9	3,174	96	26	74	173	3,447
10-14	2,297	329	23	51	111	2,482
15-19	1,622	375	49	43	53	1,767
20-24	1,785	197	37	37	40	1,899
25-29	1,847	96	27	46	55	1,975
30-34	1,310	35	11	37	39	1,397
35-39	1,364	23	5	37	35	1,441
40-44	1,061	19	9	25	18	1,113
45-49	1,110	23	4	10	33	1,157
50-54	694	6	4	9	13	720
55-59	762	13	7	9	19	797
60-64	423	5	2	3	9	437
65-69	371	8	0	5	7	383
70-74	480	8	1	5	20	506
75 +						

Table 9.3
Lautem: Population in private households by place of present residence
and residence in July 2002 according to to age and sex groups

Total	Living in Lautem in 2002 and 2004 (non-migrants)	Living in Lautem in 2002 and in another district in 2004 (out-migrants)	Living in Lautem in 2004 an in another district in 2002 (in-migrants)	Living abroad in 2002 (immigrants)	Unknown district of residence in 2002	Total residents
Total	47,684	1,546	479	686	7,072	55,921
0-4	6,052	14	6	5	3,801	9,864
5-9	6,554	104	54	119	2,026	8,753
10-14	6,767	132	47	115	344	7,273
15-19	4,570	340	46	68	204	4,888
20-24	2,948	403	71	54	107	3,180
25-29	3,146	242	71	47	81	3,345
30-34	3,620	119	64	68	114	3,866
35-39	2,640	46	37	44	71	2,792
40-44	2,447	44	16	59	71	2,593
45-49	1,869	21	17	35	41	1,962
50-54	1,936	28	11	16	65	2,028
55-59	1,251	7	12	15	31	1,309
60-64	1,459	14	12	8	37	1,516
65-69	840	9	5	12	23	880
70-74	711	10	2	8	13	734
75 +	874	13	8	13	43	938

continued

Table 9.3 (continued)

Table 9.3
Lautem: Population in private households by place of present residence
and residence in July 2002 according to age and sex groups

Total	Living in Lautem in 2002 and 2004 (non-migrants)	Living in Lautem in 2002 and in another district in 2004 (out-migrants)	Living in Lautem in 2004 an in another district in 2002 (in-migrants)	Living abroad in 2002 (immigrants)	Unknown district of residence in 2002	Total residents
Male	23,170	904	254	312	3,600	27,336
0-4	3,127	7	3	2	1,952	5,084
5-9	3,360	63	31	54	1,024	4,469
10-14	3,571	78	24	60	171	3,826
15-19	2,259	173	23	30	94	2,406
20-24	1,312	246	28	17	56	1,413
25-29	1,354	156	33	19	40	1,446
30-34	1,754	71	42	34	61	1,891
35-39	1,322	30	25	16	32	1,395
40-44	1,074	29	12	30	36	1,152
45-49	803	10	8	15	23	849
50-54	821	13	6	12	32	871
55-59	562	3	4	5	18	589
60-64	691	7	6	4	18	719
65-69	421	5	2	6	14	443
70-74	342	6	1	2	6	351
75 +	397	7	6	6	23	432

continued

MIGRATION

Table 9.3 (continued)

Table 9.3
Lautem: Population in private households by place of present residence
and residence in July 2002 according to age and sex groups

Total	Living in Lautem in 2002 and 2004 (non-migrants)	Living in Lautem in 2002 and in another district in 2004 (out-migrants)	Living in Lautem in 2004 an in another district in 2002 (in-migrants)	Living abroad in 2002 (immigrants)	Unknown district of residence in 2002	Total residents
Female	24,514	642	225	374	3,472	28,585
0-4	2,925	7	3	3	1,849	4,780
5-9	3,194	41	23	65	1,002	4,284
10-14	3,196	54	23	55	173	3,447
15-19	2,311	167	23	38	110	2,482
20-24	1,636	157	43	37	51	1,767
25-29	1,792	86	38	28	41	1,899
30-34	1,866	48	22	34	53	1,975
35-39	1,318	16	12	28	39	1,397
40-44	1,373	15	4	29	35	1,441
45-49	1,066	11	9	20	18	1,113
50-54	1,115	15	5	4	33	1,157
55-59	689	4	8	10	13	720
60-64	768	7	6	4	19	797
65-69	419	4	3	6	9	437
70-74	369	4	1	6	7	383
75 +	477	6	2	7	20	506

MIGRATION

Table 9.4
Lautem: Population in private households 5 years and older living
in Lautem in 1999 and in another district in 2004 by sex and reason for moving

	Total	Male	Female
Total	3,138	1,826	1,312
Work	302	227	75
Education	859	530	329
Marriage	146	38	108
Family moved	302	144	158
Returned to family land	77	42	35
Violence	968	574	394
More secure	319	182	137
Temporary housing	96	50	46
Other	69	39	30

Table 9.5
Lautem: Population in private households 2 years and older living in Lautem
in 2002 and in another district in 2004 by sex and reason for moving

	Total	Male	Female
Total	1,546	904	642
Work	166	129	37
Education	481	290	191
Marriage	88	30	58
Family moved	188	95	93
Returned to family land	51	28	23
Violence	387	225	162
More secure	90	50	40
Temporary housing	56	33	23
Other	39	24	15

Census Glossary

2004 POPULATION AND HOUSING CENSUS GLOSSARY

This glossary contains definitions of census terms and provides the explanations needed to understand the census results presented in tables, graphs and maps. Most definitions of entries in this glossary are based on the questions on the 2004 Census questionnaire. This is because the first step to understand a census statistic is to know how it was collected and which specific units are included.

It is expected that this glossary become a helpful document for census data users and provide them with the necessary information for a better understanding of the available census statistics.

Age

The age of each person was obtained by asking directly for the age in years (on the last birthday). The age of babies less than one year old was recorded as 0. Regarding age groups, 0-4 years includes those who are less than 5 years old, 5-9 years includes those aged 5 years or more but less than 10 years. The 85+ group includes those 85 years or older.

Collective Households

They are dwellings where people live, on a temporary or permanent basis, but do not relate to each other to form a household; instead, provisions of living essentials are usually made by an institutional organization. Examples include convents, prisons, orphanages, hospitals, boarding schools and hotels.

Construction Materials

It refers to the predominant or most utilized material in the construction of the house, in particular walls, roof and floor.

- 1) External walls
 - a. Concrete/Brick
 - b. Wood
 - c. Bamboo

- d. Corrugated Iron
- e. Clay
- f. Other

2) Roof

- a. Wood
- b. Bamboo/Thatch/Grass
- c. Corrugated iron
- d. Tiles
- e. Asbestos
- f. Other

3) Floor

- a. Concrete or Tile
- b. Wood
- c. Soil
- d. Other

Notice that the category “other”, refers mainly to temporary material.

Cultivation of Crops

It refers to all relevant crops cultivated by the household. The census question was: *Does this household grow any crops, either temporary or permanent, to support the household? If yes, please tick applicable box(es).* The boxes refers to the following crops: rice, maize, cassava, vegetables, fruit (temporary) fruit (permanent), coffee, coconut, other temporary crops, other permanent crops.

Current Economic Activity

This term refers to the classification of the population into the economically active (in the labor force) and the not economically active (not in the labor force). The former comprises people who furnish the supply of labor for the production of goods and services during the reference time period chosen for the census. The latter refers to those persons who did not participate in the

labor force during the reference time period and if they were unemployed, did not search for a job. These two categories are then sub-divided as follows:

1) In the Labor Force:

- a. Government. This activity includes individuals directly employed by national, district government agencies, and sub-district that receive wage compensation for their jobs.
- b. UN. Individuals that are employed by the United Nations or one of its affiliated agencies
- c. NGO. The employees of a non-governmental organization devoted to achieving public rather than private objectives. Persons doing volunteer work for NGO's are also included.
- d. Private Industry. Individuals employed in market-driven, for-profit industries.
- e. Self-Employed. Individuals who operate their own independent enterprises, with or without hiring employees. Also includes persons engaged independently in trade.
- f. Subsistence Farming/Fishing. In the case of farming, refers to a mode of agriculture in which a plot of land is held, though not necessarily owned by a single family that produces only enough food to feed itself. Favorable weather can allow the subsistence farmer to produce a surplus, which can be sold or bartered. Subsistence fishing, is a mode of economic activity in which a family owns full or a significant share of a boat used to fish for sufficient quantities to feed itself. Favorable circumstances can allow the subsistence fisher to harvest a surplus, which can be sold or bartered. In cases where female

members of the household do not work outside the dwelling but are involved in the household efforts towards subsistence farming and/or fishing, they were coded as subsistence farmers/fishers rather than home duties.

- g. Looking and Available. Persons not currently employed, but who are currently looking for work and are available to start working.

2) Not in the Labor Force:

- a. Student. A person who is attending a formal educational institution as a full-time student and is not currently working (although he/she may have, or be looking for, part-time employment).
- b. Home Duties. Individuals who are occupied with daily tasks associated with home life in their own household.
- c. Retired/Too Old. This category is for people not seeking work because of their age.
- d. Sick/Disabled. Individuals who are unable to participate in the work force because of a disability or sickness.
- e. No Work Available. A person who may be available to work and who may have attempted to find work in the past, but who is not now looking for work because they consider none to be available.
- f. Other. A person not in the work force who has not worked and has not sought work, and who does not fit into any of the other "Not in the Labor Force" categories.

Degree of Literacy

It is the capacity of a person to read and write, or any combination thereof as informed by the interviewee.

District

The district was the main administrative division of Timor-Leste during the 2004 census. The country is divided into 13 districts. At present, the main division is the *region*. The country is divided into 5 regions.

District of Enumeration

It refers to the place where the person was counted on census day.

District of Residence

It is the place where the person lived on the day of the census.

Dwelling

It is a structure which is intended to have people live in it. There are three types of dwellings: private, hotels and institutions.

Educational Attainment

It refers to the highest grade completed within the most advanced level attended in the educational system. The following levels were considered in the questionnaire:

- 1) Primary School
- 2) High School
- 3) Received Diploma from High School (either Junior or Senior)
- 4) Tertiary Education
- 5) Received University Degree or Certificate

Head of Household

Is the person identified by other members of the household as such.

Household

It is defined as one or more persons residing in the same dwelling, and who make common provision for food and other essentials for living.

Household Size

It is the number of members of the household. Sometimes it is convenient to distinguish between adult members (older than 6 years or older than 14 years) and child members in order to differentiate the effect of fertility from the effect of household complexity on household size. The latter is the tendency of the adult population to form their own household as opposed to residing in someone else's household, usually a relative.

Industry

Refers to the activity of the establishment in which an economically active person worked during the reference time period or where he worked previously, if the person is unemployed. Activity of the establishment means the kind of goods or services produced.

Institution

It is a dwelling that accommodates an institutional household.

Language Capability

This term has two meanings. In the tables related to language it is considered as the capacity to speak, read or write or in any combination thereof, any or all of the official and working languages, as informed by the interviewee. In the tables related to education and literacy, the term is used in a restricted sense, referring only to the capacity to speak a language.

Main Occupation

It refers to the type of work done during the reference time period by the person employed, or the type of work done previously, if the person is unemployed. The two-digit International Standard Classification of Occupations code was used

Marital Status

It is the personal status of each individual in relation to the marriage laws or customs of the country. The categories included in the 2004 census are the following:

- 1) single (never married)
- 2) married (legal, traditional or de facto unions)
- 3) widowed (and not remarried)
- 4) divorced (and not remarried)
- 5) separated.

Mental disability (mentally ill)

Limitation(s) in the kind or amount of activities that a person can do because of ongoing difficulties due to a long-term mental condition

Mother Tongue

It is the language usually spoken in the individual's home in his or her early childhood.

Number of Children Ever Born

It is the total number of children that a woman declared to have had and that have been born alive (stillbirths should not be included).

Number of Living Children

It is the total number of children that a woman declares to have had and is alive by the time of the census

Number of Women Reporting Birth in the Past Year

It is the number of women who reported to have had a birth between 11 July 2003 and 11 July 2004.

Official languages

The official languages of Timor Leste are Portuguese and Tetum (Article 13, No. 1, Constitution of the People's Republic of Timor Leste).

Ownership Category

Five ownership categories were included in the census questionnaire:

- a. Individual and/or Family Owned Property
- b. Community or Suco Owned Property
- c. Government Owned Property
- d. Church Property
- e. Other

It is important to note that due to the current status of property legislation in Timor-Leste, it is extremely difficult to conclusively prove that an individual is in sole possession of a particular property. Thus this question pertains more to perception of ownership and provides an approximate idea of how many households and individuals live in each category of dwelling.

Ownership of Livestock

The absolute number of each species of animal by a household for use or profit as of census day: chicken, pigs, sheep, goats, horses, cattle and buffalo. Because it is known that in Timor-Leste individuals frequently share ownership of livestock, this item may exaggerate the absolute numbers owned. The information, does however, provide an enhanced sense of where certain species of livestock are more prevalent.

Permanent Disability (physical disability)

Limitation(s) in the kind or amount of activities that a person can do because of ongoing difficulties due to a long-term physical condition.

Place of Residence at a Specified Date in the Past

The subdivision, or the foreign country, in which the individual resided at a specified date preceding the census. In the 2004 questionnaire two dates were included: January 1999 (5 years prior to the census) and July 2002 (2 years prior to the census).

Population

Most of the tables in this publication include residents of the entire territory of Timor-Leste who were in the country on the census day (11 July 2004). This is the *de facto* population, that is, the people enumerated where they are found on census day, which includes residents absent from the country between 48 hours and 1 year, in addition to residents present on census day.

Primary School-Age Children

The age group children are supposed to attend primary school. In Timor-Leste it is from 6 to 11 years of age.

Private Dwelling

A dwelling that accommodates a private household

Private Household

The definition of private household is the same as household. The term *private* is used specifically to differentiate between private and collective households.

Relationship to head of household

It refers to the relation of each of the residents of a private household to the person allocated to the role of head of the household. The following categories were included in the 2004 census:

- 1) Head of Household
- 2) Wife/Husband
- 3) Daughter/Son

- 4) Stepchild/Adopted Child. The former is the natural/adopted child of the only partner in a marriage or the factor relationship. The latter is a non-biological related child that is considered to be a permanent addition to the family unit. Also included in this category are orphans/foster children held in custody by members of the household
- 5) Daughter-in-Law/Son-in-Law
- 6) Mother/Father
- 7) Sister/Brother
- 8) Grandchild
- 9) Grandparent
- 10) Other Relatives. Included in this category are aunts, uncles, cousins and other members of the extended family that have established their permanent residence in the household in question.
- 11) Unrelated. This category is applicable to other members of the household which are of no relation to any other member in the household. This may include persons such as servants, friends and paying and non-paying lodgers.

Religion

This item refers to religious affiliation or belief. The following religions were considered in the 2004 census: Catholic, Islam, Buddhist, Hindu, Protestant/Evangelical, Traditional, Other.

Reasons for Moving

This item corresponds to a direct question on the reasons for moving, which was asked of all migrants. The question was placed after the question on residence in January 1999 and also after the question on residence in July 2002: *If you moved from there, why did you move?* The alternatives were: work, education, marriage, family moved, return to family land, violence, more secure, temporary housing, and other. These questions represent an

attempt to determine motivation as perceived by the migrant and should be considered with caution in any analysis of migration determinants or causes.

Rural

The classification of sucos into rural and urban is the result of a classification done by the National Statistics Directorate (NSD). Each suco received a score based on population size, whether or not selected facilities exists (education, health, market, church), and access to water supply and sanitation, electricity, radio and television, public administration and transportation services. The scoring method was not applied rigorously because it resulted in sucos with small population in the center of Dili being classified as rural, and every single suco in some outlying districts as rural. Using the scoring analysis just as a starting point, the NSD waived the requirement for a suco to have a population of more than 5,000 to be considered urban, and the requirement that every district should have at least 1 urban suco was added. Finally, 406 sucos were classified as rural and 36 as urban.

Structure of Households

It refers to a combination of household size and relationships among household members. The following types of household structures are included in the tabulations:

- 2) One-Person Household
- 3) Nuclear Family Household, which consists entirely of a single family nucleus that could be a married couple with or without children, a father with children, or a mother with children
- 4) Extended Households, which form into one of the following arrangements: (a) a single family nucleus with other relative(s) only; (b) two or more family nuclei related to each other without any other

person; (c) two or more family nuclei related to each other plus other person(s) related to at least one of the nuclei; and (d) two or more persons related to each other, none of whom constitute any family nucleus

- 5) Composite Households, which are all those households consisting of a family and one or more non-family members or two or more persons that are not related to each other.

Sub-District

Each district is split into between 3 to 7 sub-districts.

Unpaid Work for the Suco Community

The sum of days in the previous month (June 12 to 11 July, 2004 inclusive) that the adults of the household (15 years of age and older) spent completing activities and tasks for the benefit of the community. These activities could include working the communal suco land (community farming), repairing irrigation systems, roads, or public infrastructure, preparing for local ceremonies and any activities associated with the church.

Urban

See Rural

Working Language

The working languages of Timor-Leste are English and Indonesian. They have been approved in the Constitution to allow for working communication purposes until such time as the official languages, Portuguese and Tetum, are fully integrated (Article 159, Constitution of the People's Republic of Timor-Leste).



Timor-Leste

Direcção Nacional de Estatística

**Rua de Caicoli
Apartado 10/PO Box 10
Dili, Timor-Leste**

Contact

**Phone:
00670 333 9527**

**E-mail:
info@dne.mof.gov.tl**

**Website:
<http://dne.mopf.gov.tl>**