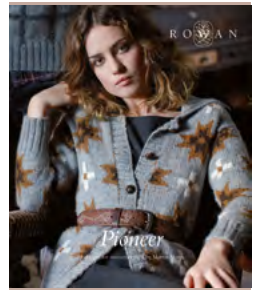


# ADDENDUM

SETTLER

PIONEER



## Hood

Using 4½mm (US 7) needles, cast on 95 [95: 95: 95: 97: 97: 97] sts.

Place a marker on centre st.

Beg with a K row, work 2 rows in st st, ending with RS facing for next row.

**\*\* Next row (RS):** K to marked st, M1, K marked st, M1, K to end.

Work 7 rows.

Work from **\*\*** 3 times more, ending with RS facing for next row. 103 [103: 103: 103: 105: 105: 105] sts.

Cont straight until hood meas 33 cm, ending with RS facing for next row.

## Shape top

**Next row (RS):** K to within 2 sts of marked st, K2tog, K marked st, S1, K1, pssso, K to end.

Work 5 rows, ending with RS facing for next row.

**Next row (RS):** K to within 2 sts of marked st, K2tog, K marked st, S1, K1, pssso, K to end.

Work 3 rows, ending with RS facing for next row.

**Next row (RS):** K to within 2 sts of marked st, K2tog, K marked st, S1, K1, pssso, K to end.

**Next row:** P to within 2 sts of marked st, P2togtbl, P marked st, P2tog, P to end. 95 [95: 95: 95: 97: 97: 97] sts

**Next row (RS):** P to end dec 1 st at centre of row. 94 [94: 94: 94: 96: 96: 96] sts

**Next row (WS):** K47 [47: 47: 47: 48: 48: 48], turn and fold hood in half with right sides together.

Cast off working through first st on first needle tog with first st on second needle, repeat until all sts have been cast off.

Sew to neck edge placing front edges half way across front bands.

R O W A N

Unfortunately a pattern error has occurred, we apologise for any inconvenience that this may have caused

[www.knitrowan.com](http://www.knitrowan.com)  
+44 (0) 01484 681881