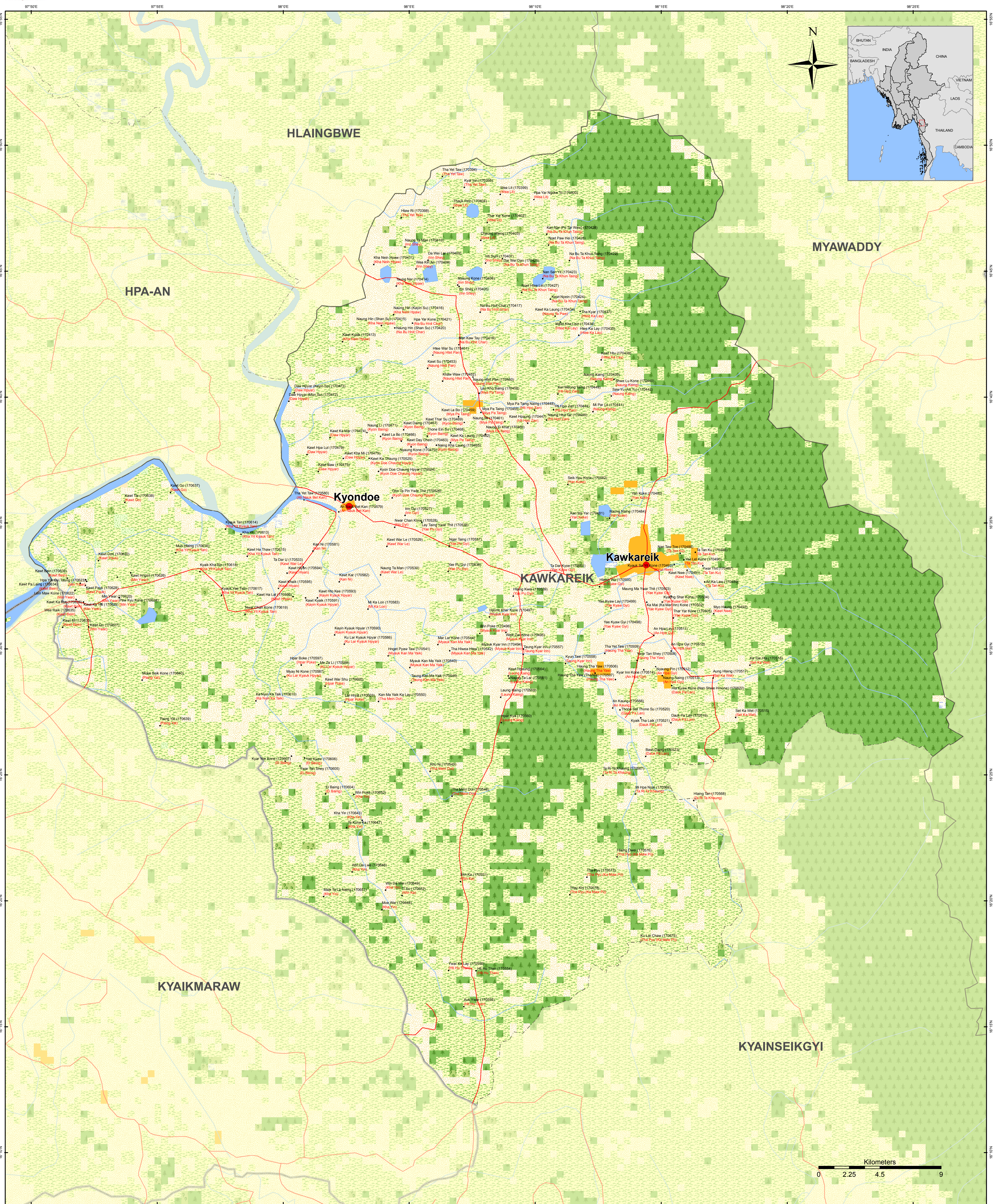




Kawkareik Township - Kayin State



Funded by European Union Humanitarian Aid



Map ID: MIMU154v04
Creation Date: 3 May 2016,A1
Projection/Datum: Geographic/WGS84

Data Source:
 BASE MAP - MIMU:Boundaries - WFP,modified by MIMU 2008;
 Landcover - LP DAAC - MCD12Q1 2011 V.5 IGP (Type1)
 Place name - Ministry of Home Affair (GAD)
 translated by MIMU

Map produced by the MIMU - E-mail: info.mimu@undp.org
 Website: www.themimu.info

Legend

| | | |
|-----------|--|----------------|
| • Village | — Shore | Snow Ice |
| ● Town | - - - Township Boundary | Urban Build-up |
| — Road | — District Boundary | Bare Land |
| — Railway | — State Boundary | Wetland |
| | — International Boundary | Water |
| | Non-Perennial/Intermittent/Fluctuating | |
| | Perennial/Permanent | |

Landcover

| | |
|---------------------|----------------|
| Crop and Vegetation | Snow Ice |
| Forest | Urban Build-up |
| Mixed Forest | Bare Land |
| Grassland | Wetland |
| Shrubland | Water |

Village Name
 Ting Kawk (166214)
 (Ting Kawk)
 Village Tract Name

Myanmar Information Management Unit (MIMU) is a common resource of the Humanitarian Country Team (HCT) providing information management services, including GIS mapping and analysis, to the humanitarian and development actors both inside and outside of Myanmar.

NOTE: Due to the limited space of label for Villages, some Village's name will not be appeared on this map.

Copyright © Myanmar Information Management Unit 2016. May be used free of charge with attribution. For more information see <http://www.themimu.info/license>. This notice cannot be modified or removed.

Disclaimer: The names shown and the boundaries used on this map do not imply official endorsement or acceptance by the United Nations.