



Riisitunturi National Park



The untamed wilds of the Riisitunturi National Park represent hill and fell country at its best. Magnificent hanging bogs cover the slopes of the fell, and from the top, breath-taking views take the eye over the Kitkajärvet Lakes and the woodlands of Posio. The national park is located in Posio in the Province of Lapland. With an area of 77 km², the park was established in 1982. In all, the Riisitunturi area spans roughly 120 km². The area is maintained by Metsähallitus.

Magical Wilds and Snow-laden Forests

Nearly the entire area of the Riisitunturi National Park is located 300 metres above sea level, and both of the fell tops rise to more than 400 metres. The national park is a part of the vast taiga forest zone circling the northern parts of the Eurasian continent. Most of the park is covered by candle-like spruces and a thick carpet of moss. Maanselkä, the watershed between the east and west, runs through the Riisitunturi area.

In the winter, atmospheric humidity condenses on tree branches, forming thick icy deposits of snow. Most trees cannot bear the

weight of this heavy snow and give under the burden. In the summer, the humidity causes hanging bogs to form even on the steepest slopes, and the Riisitunturi National Park is amongst the finest areas in Finland to observe this phenomenon.

The hawk owl, also featured in the Riisitunturi logo, is a common sight during good mole years. The fell tops are home to several species adapted to open terrain, such as the yellow wagtail (*Motacilla flava*) and meadow pipit (*Anthus pratensis*). The whooper swan thrives on the bogs dotted with small ponds and puddles.

Go Hiking and Camping

Two new day trails have been built in the Riisitunturi National Park. These trails are located in the hill and fell area,

Riisin Rääpäsän, 4,3 km, this hike takes about 2-3 hours

Services: The Riisitunturi Open Wilderness Hut

Sights: Riisitunturi Fell, Ikkunalampi Pond, the hanging bogs and the scenery over the forest and the Kitkajärvi Lakes

Markings: green paint marks

Hiking direction: clockwise

Riisin Rietas, 10,7 km, This hike takes about 4-5 hours

Services: The Riisitunturi Open Wilderness Hut, the Soilu and Uusilampi lean-to shelters

Sights: Uusilampi Pond, the hanging bogs, the Riisinsuo mire, Pikku Riisitunturi, Riisitunturi

and the scenery around the forest and the Kitkajärvi Lakes

Markings: green paint marks

Hiking direction: clockwise

Experience Winter in the Park

The Riisitunturi and Kirintövaara-Karintunturi skiing trails are maintained in late winter. Independent cross-country skiing and snowshoe hiking is allowed in all parts of the park. Moonlit skiing on the Riisitunturi fell is truly a wintery experience!

The hilly landscapes of the Riisitunturi National Park offer good hiking opportunities throughout its terrain. The Riisitunturi Trail is best suited for an overnight hike.

In the Riisitunturi National Park, the Following Are

Allowed

- walking and skiing independently
- lighting campfires and camping at sites marked for this purpose
- angling and ice fishing according to Finnish fishing laws and regulations; other types of lure fishing requires a permit from Metsähallitus.

Forbidden

- disturbing or harming the environment or animals
- picking plants or their parts
- taking pets to the open wilderness huts
- lighting campfires or other types of open fire if a forest fire warning is in effect.

Other Matters to Observe

- The use of the huts in the national park is governed by Metsähallitus's general open wilderness hut regulations; these are posted for review at each hut.
- economical use of firewood at campfire sites.

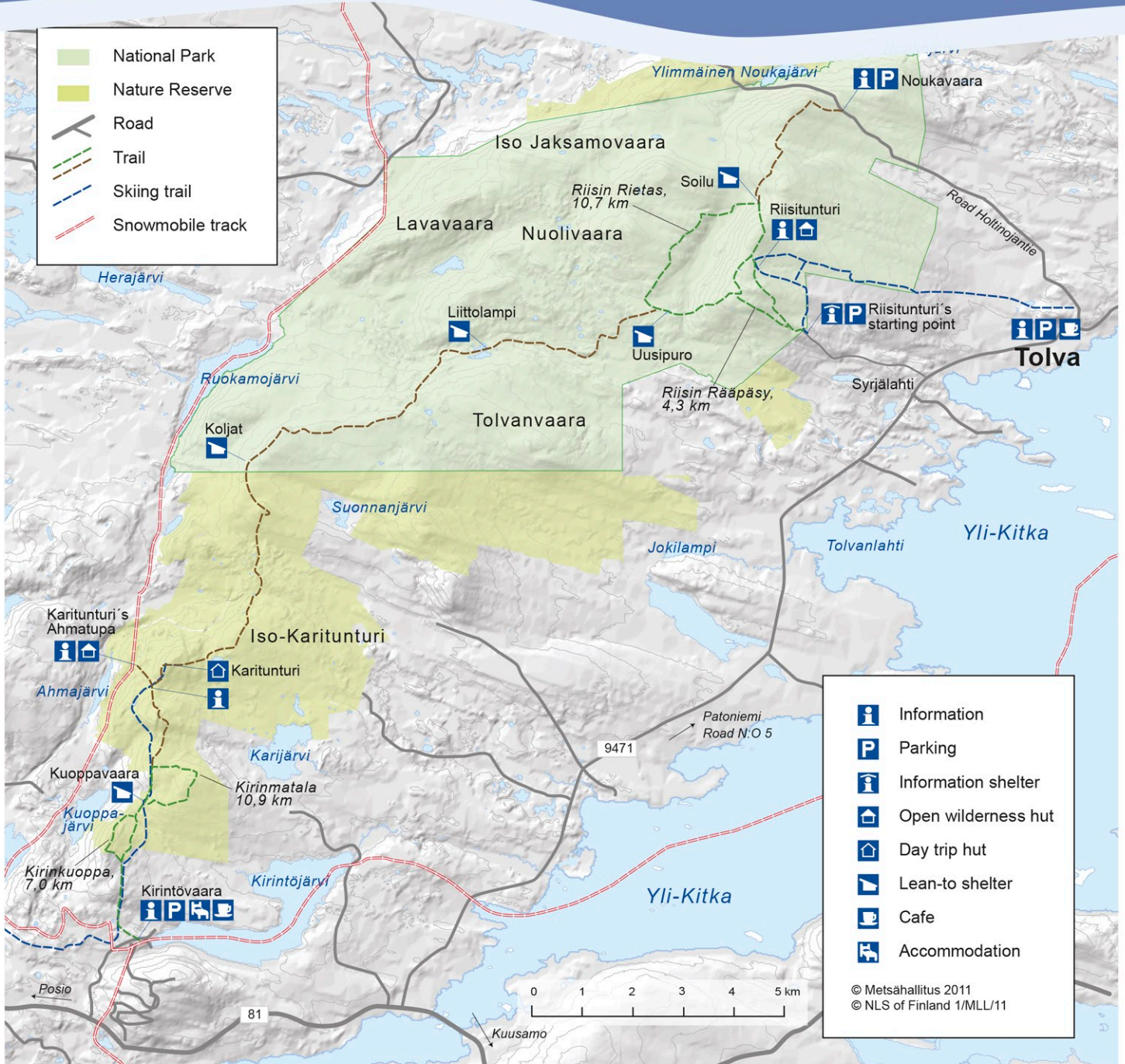
Independent Waste Disposal

- there are no waste disposal units in the national park, and hikers are responsible for removing their own waste from the terrain.





Riisitunturi National Park



Further Information

www.outdoors.fi/riisitunturi

Metsähallitus, Natural Heritage Services of Ostrobothnia, Torangintaival 2, FI-93600 Kuusamo

- Oulanka Visitor Centre, Liikasenvaarantie 132, FI-93999 Kuusamo, tel. +358 (0)205 64 6850, oulanka@metsa.fi
- Hautajärvi Visitor Centre, FI-98995 Hautajärvi, tel. +358 (0)205 64 6870, hautajarvi@metsa.fi
- Customer Service Point Karhuntassu, Torangintaival 2, FI-93600 Kuusamo, tel. +358(0)205 64 6804, karhuntassu@metsa.fi

Traffic Connections

The starting points of the trails in Riisitunturi are the new Riisitunturi Starting Point (3 km from Syrjälahti) and the Noukavaara Starting Point by the side of Holtinojantie road.

Riisitunturi can also be reached from Kirintövaara Hill via the trail travelling through the Karitunturi protected mire area.

The distance from Posio centre to the Riisitunturi National Park is roughly 30 km, and from Kuusamo it is 60 km. More detailed instructions are available at outdoors.fi.

