



National Park

# Sipoonkorpi

english |



Sipoonkorpi is one of the few large areas of unspoilt forest left within easy reach of Helsinki. The park is home to many rare and threatened species. It is also a very popular setting for recreational activities. People come here to see woodland flowers blooming in the spring, to pick bilberries in the summer, to forage for tasty mushrooms in autumn, and to go cross-country skiing in the winter.



## Fields and forests

Sipoonkorpi's varied scenery includes different kinds of forests, marshes, rugged crags and rolling farmland.

The forests in the northern part of the park contrast with the picturesque open fields along the winding stream of Byabäcken. This farmland is still in active use, and cattle and horses can be seen grazing in scenic meadows and pastures. The village of Hindsby at the end of Byabäcken valley has many well preserved old wooden houses.

## Inviting paths and hiking trails

Sipoonkorpi National Park has only been recently established, and its facilities are still being developed in collaboration with the local authorities and local associations. But the park is already a popular destination for day trips or longer hikes of a couple of days. Hikers can spend the night in a camping area at Ängesböle near the Byabäcken valley, where there is also a campfire site.

The only signposted trails are the trails in Byabäcken valley and the nature trail at Kalkkiruuki near Sotunki. In other parts of the park visitors should use a map and compass.

A shelter and campfire site along the Kalkkiruukki Trail make a good picnic spot. This 4.5-km trail starts from the end of Kalkkiuuntie road and runs through varied terrain with some fairly steep stretches. There is another car park in Sotunki at Flatberget by the beginning of Tasakalliontie road.

Information provided along the Ponu's Heritage Post nature trail in Byabäcken (1.4 km) gives insights into local forest habitats and farming practices. The trail starts from a car park on Länsitie road 2.5 km northwest of Hindsby village (Länsitie 237).

## Sipoonkorpi National Park:

- Established in 2011
- Total area approx. 18.5 km<sup>2</sup>, with further extensions planned
- Located on the eastern fringes of Helsinki, in the municipalities of Sipoo, Vantaa and Helsinki.
- Finland's national parks are managed by Metsähallitus Natural Heritage Services.

Other car parks are located at Källänge near the northern end of Byabäcken valley (Länsitie 152) and by Knuterstie road at Bakunkärr in the central part of the park (Knutersintie 421).

## Help us to look after the environment

Visitors are asked to protect the environment in the park by looking after their wastes carefully. No litter bins are provided around the park. Safely combustible wastes can usually be burnt at campfire sites, but please take any other wastes away from the park.

## Please observe the national park regulations

### VISITORS MAY:

- freely walk and ski around the park
- row and canoe on the park's rivers and lakes
- pick wild berries and edible mushrooms
- fish with a simple rod and line or ice-fishing tackle (except in the rivers Byabäcken, Ritobäcken and Hälsängsbäcken; and Lake Storträsk)
- camp out and light campfires in the sites indicated

### VISITORS MAY NOT

- feed or disturb farm animals grazing in the park
- light campfires during forest fire warnings
- let pets off lead
- damage or disturb the park's natural features or wildlife
- drive motor vehicles off road
- leave litter or damage the park's facilities

Please do not enter private gardens or crop fields around the edges of the park. Parking on fields by the roadside in the vicinity of the park is prohibited.

## Metsähallitus – national park management

- Häme Visitor Centre:  
tel. +358 205 64 4630, hame@metsa.fi
- For information about Finland's other natural attractions: outdoors.fi, excursionmap.fi

PHOTO: METSÄHALLITUS / JARI KOSTET

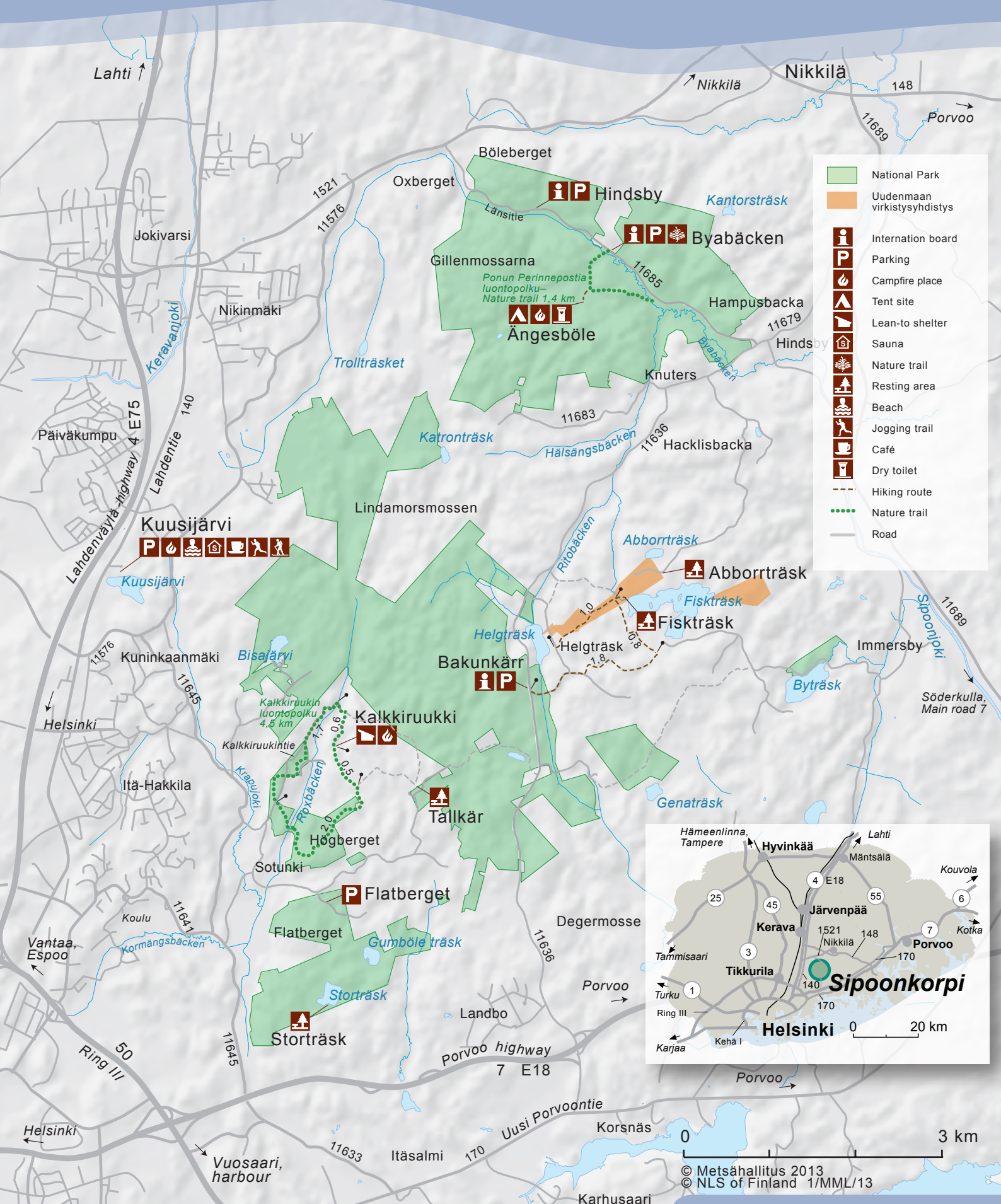




National Park

# Sipoonkorpi

english |



- National Park
- Uudenmaan virkistysyhdistys
- Information board
- Parking
- Campfire place
- Tent site
- Lean-to shelter
- Sauna
- Nature trail
- Resting area
- Beach
- Jogging trail
- Café
- Dry toilet
- Hiking route
- Nature trail
- Road



© Metsähallitus 2013  
© NLS of Finland 1/MML/13