



FOOTSTEPS

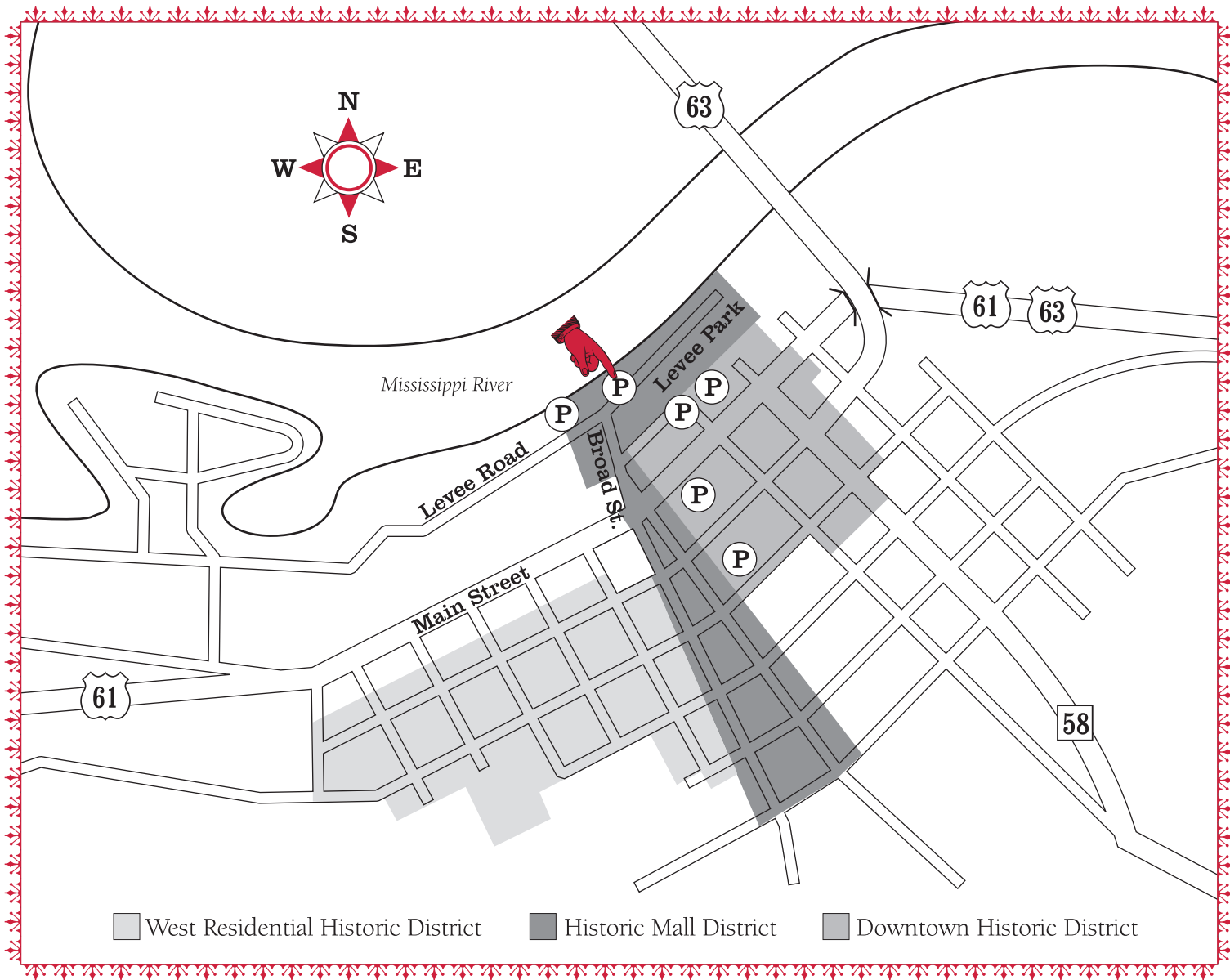
through

Historic

**RED
WING**

*Three
Walking Tours
of Red Wing's
Historic
Architecture*

Location



Red Wing is located in the scenic bluffs area of Southeastern Minnesota on the Mississippi River at the junctions of U.S. Highways 61 and 63, and Minnesota Highway 58.

All three walking tours begin from Levee Park in downtown Red Wing. Levee Park is one block north of Highway 61 at

Broad Street. Parking is available adjacent to Levee Park and in public parking facilities at Riverfront Centre and Studebaker Park (See Location Map). On-street parking is also available on Levee Street in front of the Red Wing Depot.



G

eneral Information



Red Wing boasts impressive historic buildings and sites, many of which are featured in the three walking tours included in this brochure. From the bold brick detailing along the roofline of an 1860s commercial building to the delicate and richly varied wood ornament on an 1890s Queen Anne style house, the best way to explore Red Wing's architecture is on foot.

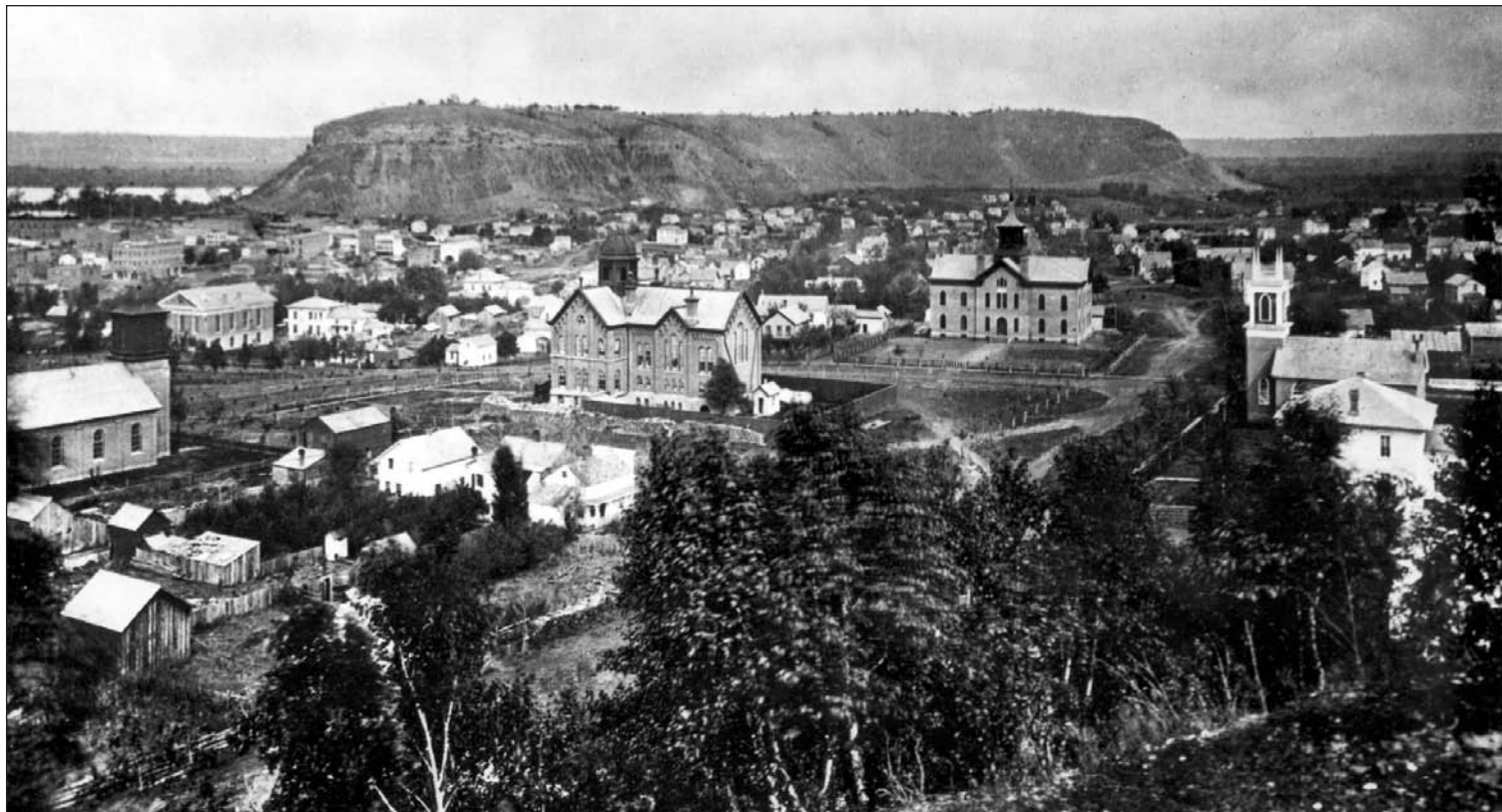
The walking tours are laid out in connecting loops so that you may complete one, two, or all three areas at one time. The tours explore Red Wing's downtown commercial area, a historic mall lined with churches and civic institutional buildings, as well as a residential neighborhood immediately west of downtown which has been included on the National Register of Historic Places.

Begin the tours from the historic entry point to the City, the riverfront area now known as Levee Park. Parking is available in

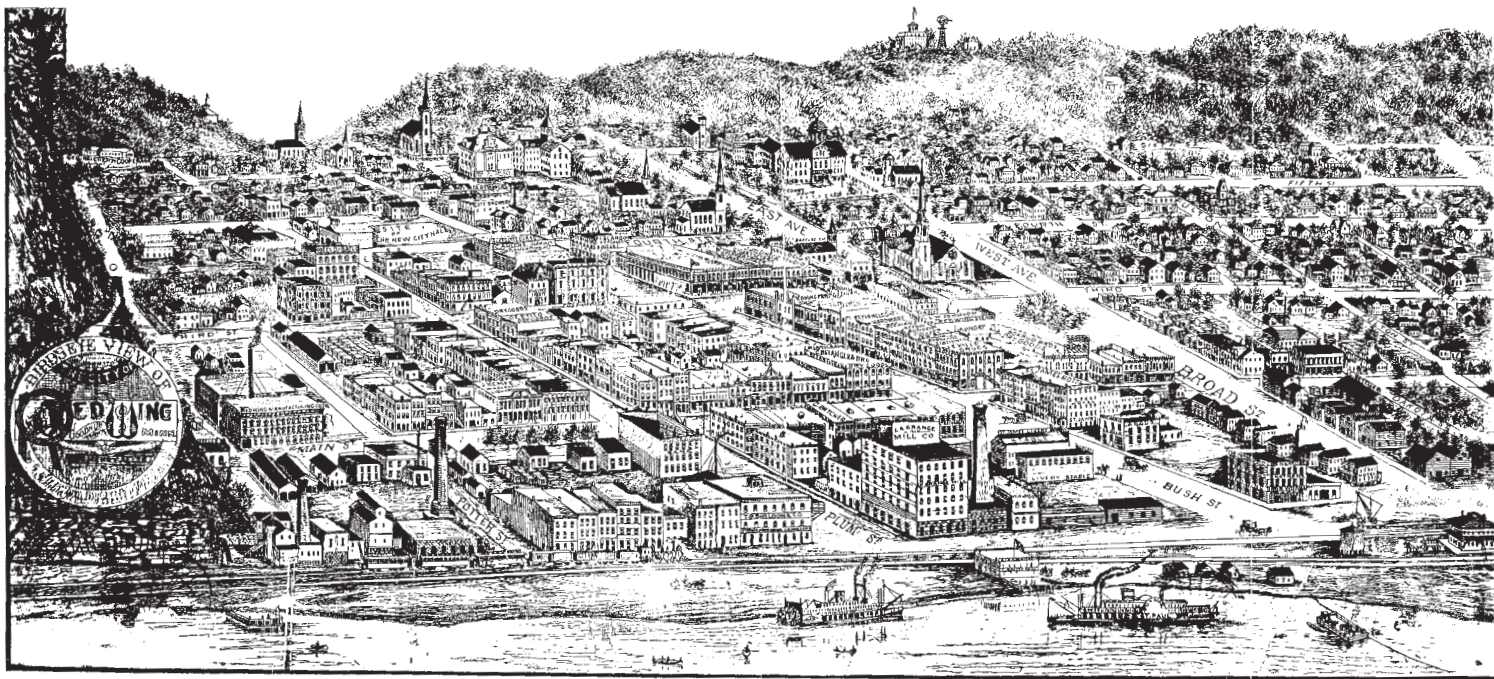
the lot at Levee Park and the nearby Riverfront Centre public parking facility. After parking, stroll toward the center of the park until you reach the Mayor's Walk, a circular path with the names of all of Red Wing's mayors since 1857 incorporated into paving blocks. Take a moment to enjoy the scenery from the park, read about Red Wing's history and then proceed to the first building on the Downtown Tour, the Chicago-Milwaukee-St. Paul-Pacific Railroad Depot located immediately adjacent to the park.

Each tour can be completed in approximately 45 minutes, walking at a moderate pace and taking time to enjoy the architectural detail of many of the buildings along the tour routes. Plan to allow at least 2½ hours to complete all three walking routes. Homes on this tour are private residences and are not open to the public.

Enjoy your journey through Red Wing's architectural past!



View of Red Wing from College Hill, 1870's



Bird's Eye View of Red Wing, based upon an 1888 sketch but updated and published in the mid-1890's. Note the steamboat landing and

ferry at the base of Bush Street and the numerous grain mills and warehouses that lined the riverfront.

Historic River Town

Situated alongside the Mississippi River, surrounded by limestone bluffs rising dramatically above the landscape, the City of Red Wing enjoys an enviable natural environment. Equally impressive are its many historically and architecturally significant buildings reflecting its mid-nineteenth century beginnings as a riverfront trade point and continued development as a community with a diversified and progressive industrial base and a variety of locally-supported civic institutions. Originally the site of a Dakota farming village, in 1837 Samuel Dentan and Daniel Gavin and their families arrived here as missionaries (and the first white settlers) with the Evangelical Missionary Society of Lausanne (Switzerland). Health problems forced both families to leave Red Wing in 1845. When the Revs. John Aiton and Joseph Woods Hancock arrived in 1848 and 1849, they reactivated the

mission, reporting a population of five white adults and approximately 300 Dakota.

The signings of the Traverse des Sioux and Mendota treaties in 1851 marked the first steps toward opening land in Minnesota for white settlement. The first impetus for significant development occurred in 1855 with the opening of the U.S. Land Office in Red Wing under Christopher Graham and William Phelps' direction. Within a few years the missionary outpost was transformed into a bustling riverfront trade center with a population of 1,251 in 1860.

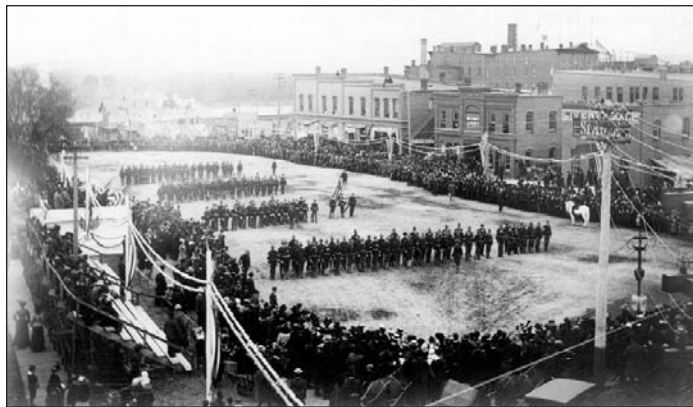
Despite a temporary slowdown resulting from the Civil War, the 1860s marked a decade of phenomenal growth as the population grew to 4,260 by 1870. Riverfront trade boomed as wheat production increased on surrounding farms. The first area shoe

factory opened in 1861, marking the beginning of Red Wing's important leather and shoe industry. The City grew dramatically during the first half of the 1870s principally because of the increased wheat trade. In 1874, 2,418,622 bushels of wheat were shipped from Red Wing, leading to its designation as "the greatest local wheat market in the world." Unfortunately, the impact of wheat on Red Wing's economy was shortlived. During the second half of the 1870s wheat farmers faced diminishing yields due to depleted soils, increasing blight and rust, and a series of severe storms.



*View of Carnegie-Lawther Library and
T.B. Sheldon Auditorium, 1910's.*

With the decline of the wheat trade, the local economy avoided total stagnation by diversifying the industrial base. Flour milling, leather processing, lime quarrying, lumber and millwork, furniture construction and local clay-related industries evolved toward the end of the nineteenth century.



*Company G marching up Broadway, upon returning from Manila,
October, 1899. John Rich Park is now located on this site.*



*Ferry crossing the Mississippi, St. James Hotel
in center of photo, late 1800's.*

Perhaps Red Wing's most treasured heritage resulted from the development of fundamental industries and a particular civic mindedness of its citizenry during the first decade of the twentieth century. Historic park developments and key governmental buildings were built during this local manifestation of the "City Beautiful Movement."

In recognition of these precious resources and others developed before and after this period, the City of Red Wing established in 1977 a Heritage Preservation Commission with the expressed purpose of identifying historic, architectural, and archaeological resources and to develop strategies for their preservation and continued use. One of the results of preservation efforts is the recognition of 22 sites on the National Register of Historic Places located within the community. In addition there are 3 National Register Districts and 3 locally designated historic districts.



John Rich Park and Pergola, 1911

Downtown Historic District

Red Wing's relationship to the Mississippi River is central to the early growth and development of downtown. After arriving in 1837, the missionaries found a Dakota village at the foot of Barn Bluff, just up from the riverfront on the first plateau above the river flood plain. This was an obvious stopping point because of the sharp bend north of this location, said to be the sharpest navigable turn on the entire Mississippi River. The first missionary buildings were constructed on a site approximately where Josephson's Clothing Store is today on Bush Street. Riverfront trade was paramount to the development of the downtown throughout the second half of the nineteenth century. Commodity shipment and passenger travel by steamboat focused on the levee. The riverfront also provided the location for later railroad travel. As the community developed diversified industrial activities, these businesses were located adjacent to the riverfront because of the ease of shipping raw materials and finished products. The commercial, office and institutional sectors of the community were built just above the riverfront on the first terrace, hedged by steep bluffs.

Numerous architectural styles are represented in the downtown area. The earliest brick commercial buildings in downtown Red Wing were characterized by plain brick walls, simple corbeled brick cornices, and either rectangular windows with cut stone lintels and sills or very shallow brick segmental arched windows with cut stone sills. Round-arched Romanesque dominated architectural style for commercial buildings constructed in Red Wing between 1861 and 1869. The Italianate style was very popular in Red Wing's downtown between 1867 and 1884. A unique local variation of the Italianate style relied on Red Wing-produced terra cotta hood moldings, cornices, and belt courses to enliven otherwise plain facades. Many commercial buildings constructed in Red Wing during the late nineteenth century are characterized by tall, rather narrow rectangular windows rather than the round and segmental-arched openings popular in earlier Romanesque and Italianate style designs. After the turn of the century, many of the institutional buildings utilized the Renaissance Revival style of architecture.

1 Chicago-Milwaukee-St. Paul-Pacific Depot (1905) Levee Park

Between 1900 and 1910 the "City Beautiful Movement" inspired the Red Wing Civic League to spearhead a series of public improvements. Turn-of-the-century visitors to Red Wing most often arrived by train or steamboat. Concerned that their initial impression of the City was a rundown wood depot building and a weed- and debris-strewn riverbank, the Civic League's first project was levee improvement. In 1903 the City of Red Wing and the Milwaukee Road signed an agreement that secured financial backing for the levee improvements. In return for track-
age concessions, the Railroad agreed to construct a new depot and donated \$20,550.00 to the City to begin improvement of the levee area for park purposes. The construction of the levee wall, filling in of the riverbank and balance of the park improvements were completed between 1905 and 1906.

The Classical style depot building was designed by J.N. Nettenstrom, the Railroad Company architect, and is nearly a copy of a depot at Keokuk, Iowa. The building is constructed of two tints of pressed brick, trimmed with local stone and is noted for its low overhanging eaves.



C.M. & St. Paul Depot, c. 1905

2 Red Wing Iron Works Building (1866) Levee and Bush Streets

Red Wing's oldest industrial building and a fine example of mid-nineteenth century functional architecture. Wall-reinforcing brick pilasters create slightly recessed bays in which the simple arched windows are set. The Densmore brothers established their foundry business here in 1866. Their manufacturing and machine-repairing skills were vital to the development of the grain milling industries that at one time lined the riverfront.

3 Riverfront Centre (1858, 1868, 1871, 1884 and restoration completed 1988)

314 Main Street

The Red Wing Shoe Company restored this entire block of Main Street which houses their corporate headquarters. Plaques describe the architectural styles and construction dates of the buildings that make up the block. Of special significance are the Simmons-Swanson Block (318-322 Main Street) completed in 1871 and considered one of the most elaborate Italianate buildings in downtown Red Wing; the Wilson-Baker Block (312-316 Main Street) constructed in 1868; the Charles Betcher Block (310 Main Street) location of the Betcher Hardware Company which in the 1870s was the second largest wholesale hardware business in Minnesota; the John Day Block (308 Main Street) which was the first brick commercial building in Red Wing, constructed in 1858; and the Buchholz-Hadler-Moeller Block (302-306 Main Street) an excellent example of the Late-Nineteenth Century Commercial style of architecture constructed in 1884.

➤ *Cross Main Street at Plum Street. You may want to look back for a view of the entire block.*



*Looking east on Main Street from Bush Street, 1877.
Buildings now restored as Riverfront Centre.*

4 The Armory and Masonic Hall (1901, 1925)
217-221 Plum Street

Constructed in 1901 at a cost of \$21,000 to house both Company G of the Minnesota National Guard and the Masonic Hall. It continued to be used for those purposes until Easter night, 1925 when a fire gutted the building's interior and destroyed its third floor. The Armory portion of the structure was promptly rebuilt but the Masonic Hall decided to move. The building is presently used as a restaurant and office complex. Note the Masonic emblems over the original side entrance to the third floor.

5 Kappel Wagon Works (1875)
219-221 Third Street

This building is one of the best examples of Italianate architecture remaining in downtown Red Wing. The three-story building, constructed for the Michael and John Kappel Carriage and Wagon Works, the largest of several local wagon manufacturers, an important commodity in a city that served as the trading center for the surrounding agricultural communities, retains the original arched ground floor.

6 Matt Anderson/Eagle Building (1889)
319 Third Street

Constructed for Matt Anderson in 1889 for use as a grocery store, this building is also noted for its long occupancy by the *Red Wing Daily Eagle* newspaper. Be sure to notice the "1889" incorporated within the stained glass transom on the second story and the elaborate pressed metal cornice and window hood moldings.

7 Gladstone Block (1885-1886)
305-313 Bush Street

Built by James Lawther, one of Red Wing's most successful businessmen and benefactor of numerous civic enterprises including the Carnegie-Lawther Library, the YMCA, and the park on Barn Bluff. Displaying a fine handling of locally-quarried limestone, the building is also the most impressive local example of the Richardsonian Romanesque style of architecture with round-arched windows and corbeled brick cornices.

The original function of the three large stone supports protruding above the second story is a mystery. They may have been associated with details on the original third story that was destroyed when the roof collapsed while the building was under construction in January 1886.

**8 Red Wing City Hall (1905-1906)
Fourth, Plum and Bush Streets**

Designed by Minneapolis architect Lowell Lamoureaux in the Renaissance Revival style, the large two-story City Hall building occupies half a city block and is set off by a large lawn. Prior to its construction in 1905, the City had rented office space on the upper floors of several downtown buildings. Its completion allowed the City to consolidate administrative offices, a jail and fire station in one building. Like other turn-of-the-century public buildings in Red Wing, City Hall incorporates a variety of classical details within its design. Note the triangular pediments above the first story windows, and the modillioned cornice which encircles the building's roofline.



City Hall, Red Wing, 1908

➤ *Walk west on the Fourth Street sidewalk and turn right between the Downtown Plaza (the nine-story red brick building) and the Qwest Telephone building. The Downtown Plaza building was constructed in 1985-1986 and provides 102 units of elderly housing and a 240-car public parking facility. Continue through Jordan Court north to Third Street.*

➤ *Before crossing Third Street, pause to look across the street to the west (your left) to view the Webster Livery Stable building (stone building).*

**9 Webster Livery Stable (1882)
432-438 West Third Street**

This building shows the adaptation of the prevailing Late-Nineteenth Century Commercial style of architecture to the peculiar requirements of a livery stable. The building's function as a stable is reflected in the stone arch that originally defined the driveway to the stall area. The building is significant because it is the last livery stable building in downtown Red Wing that retains most of its original architectural detailing. In 1886, there were almost a dozen public livery stables located in the downtown area.

➤ *Cross Third Street at crosswalk and turn east (right).*

**10 Commercial Block (1873, 1887)
401-411 Third Street**

This building was the first in downtown Red Wing to use the Late-Nineteenth Century Commercial style characterized by two-story construction and tall rectangular windows with flush, incised lintels. The Commercial Block originally consisted of six storefronts facing on Third Street. The two storefronts on Bush Street were added between 1886 and 1891. The lintels are not cut stone, but an experimental cast product, reportedly consisting of "sand, gravel, cement, and chemicals."

**11 Goodhue County National Bank
(1904, 1969, 1987)
222-228 Bush Street**

The four-story building on the corner of Third and Bush Streets was constructed in 1904-1905. Like City Hall, the bank's design reflects the classical influence that gained popularity in civic and institutional architecture at the turn of the century. This style was used to a lesser extent for commercial buildings. The ground floor was occupied by the banking rooms of the Goodhue County National Bank, founded in 1878 as an offshoot of the Goodhue County Savings Bank. The upper floors quickly became the most prestigious location in Red Wing for lawyers, physicians, dentists, and other professionals.

**12 Busch Block (1883)
215-221 Bush Street**

This building is most noted for its longtime association with Josephson's gentlemen's clothing store. Located in 1875 at 330 Main Street, Josephson's moved to this location in 1903. The store's interior is virtually unchanged from its turn-of-the-century appearance.

**13 Smith-Wallower Block (1866, 1867)
210-214 Bush Street**

The round arches that dominate the cornice and window designs of these two structures are typical details of the Romanesque style on Red Wing commercial structures constructed just after the Civil War. With the adjacent Lawther Block, these buildings form a streetscape that is little changed (on the upper facades) since 1887.

14

Lawther Block (1859)
202 Bush Street

The Lawther Block is one of the few commercial buildings associated with Red Wing's initial development prior to the Civil War. It is one of the most significant within the historic district because it is the oldest virtually unaltered brick commercial block in the downtown and possibly one of the oldest remaining commercial buildings in Minnesota.

Designed in Mid-Nineteenth Century Functional style, the exterior appearance of this building has changed little since its construction, though the original 6-over-6 windows were altered to 1-over-1 windows in the late nineteenth century and the original storefront has been replaced several times.

15

St. James Hotel (1874)
406 Main Street

By 1873, Red Wing had become the world's largest primary wheat market with a warehouse capacity of one million bushels. Primarily from wealth created by this industry, eleven prominent Red Wing businessmen invested in the construction of the St. James Hotel. Opening with a grand ball on Thanksgiving Day, 1875, it was long considered one of the most elaborate of the large river town hotels along the Mississippi, catering to tourists and business clientele before 1900 when Red Wing was a major commercial center and stopping point for steamboat traffic. The Italianate hotel remains a major architectural landmark within the central business district. In 1977, the hotel was purchased by the Red Wing Shoe Company and was completely restored with two additions, a shopping mall and a new section for offices and hotel rooms overlooking the river.

16

Keystone Block (1867)
407-411 Main Street

Designed by local architect and contractor D.C. Hill, the building is noted for its prominent cornice, heavy rusticated brickwork, and fine Italianate styling.

➤ *Continue to walk west on Main Street toward Broad Street. The Historic Mall District walking tour begins with the YMCA at the corner of Broad and Main Streets.*

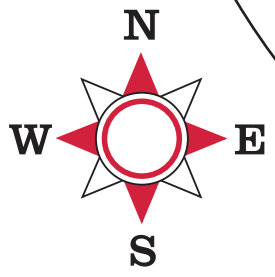
Historic Mall District

The significance of the Red Wing Historic Mall District is that it is a well-preserved civic center dating from the first years of the community's development. The district is located on a wedge-shaped piece of land running north and south between the Mississippi River and Seventh Street and along East and West Avenues and Broad Street. An unusual concentration of public, institutional buildings and churches representing a variety of popular architectural styles are found in this area.

The central blocks of the mall were originally set aside as the location for a courthouse, a school, and a church when the town was platted in 1853. Its location, separated from the commercial and residential portions of town and adjacent to the river, made it well-suited for these buildings. Residences and a few churches originally lined East and West Avenues facing the mall. Later, some of the residences were replaced by more churches, and some of the first churches by larger, more substantial churches. Hamline University and the Turner Opera House were also located here in the early years and contributed to the public-institutional character of the mall. Hamline University was located in Red Wing from 1856 to 1869 on the block north of the Courthouse. The City purchased the Hamline block in 1871 and established Central Park. The Turner Opera House was built in 1873 on the northeast corner of Third and Broad Street. Seating 900 it was the principal meeting place in the city until destroyed by fire in 1882.

Many of the public/institutional buildings dominating the mall today were built during the first decade of the twentieth century as Red Wing's response to the "City Beautiful Movement." The Red Wing Civic League, organized in 1903, was instrumental in stimulating public interest in beautifying the city. Levee Park was completed during this time (1904), along with the Carnegie-Lawther Library (1903), T.B. Sheldon Auditorium (1904), City Hall and Fire Station (1905), the U.S. Post Office (1906), John Rich Park (1907) and the YMCA (1910).

The Mall has become Red Wing's public and institutional showpiece. The buildings, layout, and functions have survived the changes of the town's development. While it cannot be said to be a mall of any one period, it has always been the city's civic center.



Mississippi River

Levee Park

Levee Road

Broad Street

1

2

3

4

5

Main Street

17

16

14

13

12

6

7

9

11

8

Bush Street

10

Third Street

18

21

20

Downtown Plaza

22

24

Fifth Street

Dakota

19

29

28

27

23

Fourth Street

25

26

East Avenue

West Avenue

26

Fillon

30

31

32

33

34

35

36

Franklin

36

37

38

39

40

41

Hill

41

42

Pine

42

43

44

39

45

46

47

48

28

27

25

24

21

28

29

31

32

33

34

35

37

38

39

41

42

43

44

45

47

48

28

27

25

24

21

28

29

31

32

33

34

35

37

38

39

41

42

43

44

45

47

48

28

27

25

24

21

28

29

31

32

33

34

35

37

38

39

41

42

43

44

45

47

48

28

27

25

24

21

28

29

31

32

33

34

35

37

38

39

41

42

43

44

45

47

48

28

27

25

24

21

28

29

31

32

33

34

35

37

38

39

41

42

43

44

45

47

48

28

27

25

24

21

28

29

31

32

33

34

35

37

38

39

41

42

43

44

45

47

48

28

27

25

24

21

28

29

31

32

33

34

35

37

38

39

41

42

43

44

45

47

48

28

27

25

24

21

28

29

31

32

33

34

35

37

38

39

41

42

43

44

45

47

48

28

27

25

24

21

28

29

31

32

33

34

35

37

38

39

41

42

43

44

45

47

48

28

27

25

24

21

28

29

31

32

33

34

35

37

38

39

41

42

43

44

45

47

48

28

27

25

24

21

28

29

31

32

33

34

35

37

38

39

41

42

43

44

45

47

48

28

27

25

24

21

28

29

31

32

33

34

35

37

38

39

41

42

43

44

45

47

48

28

27

25

24

21

28

29

31

32

33

34

35

37

38

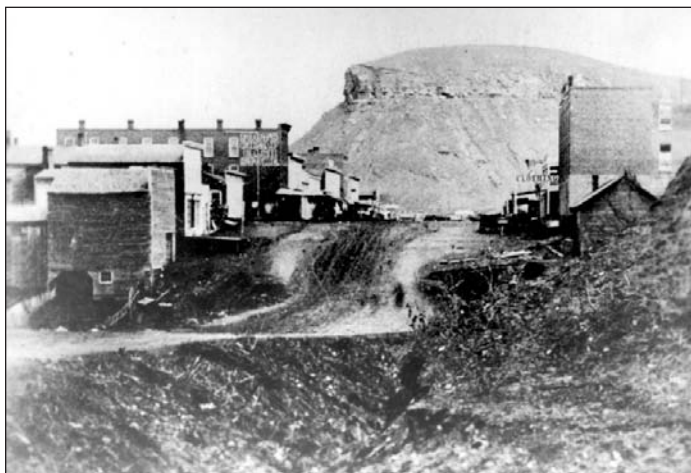
39

41

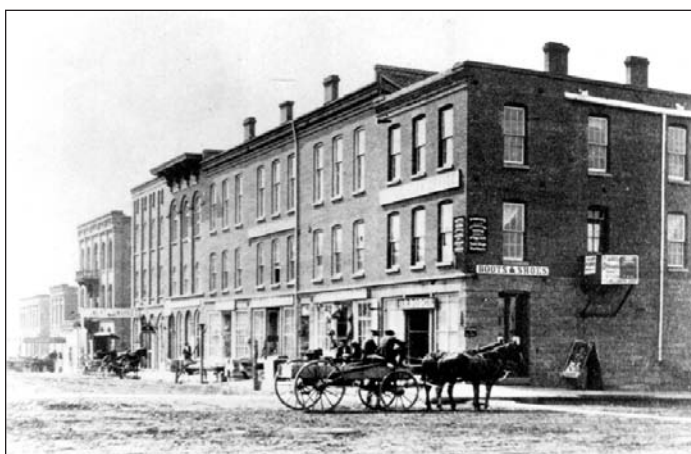
42

43

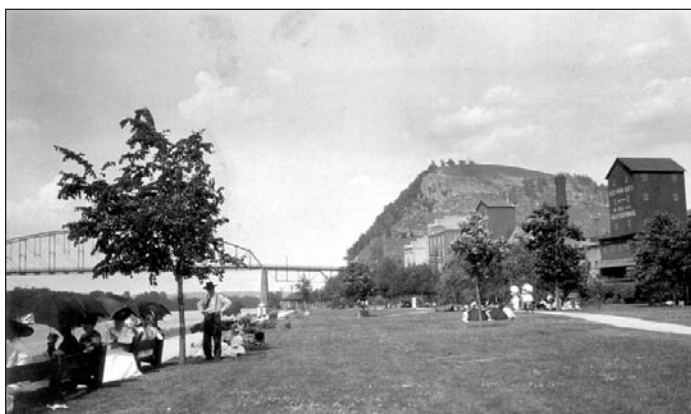
44



View of Main Street, early 1860s.



Looking South on Bush Street from Main Street, 1870s.



Levee Park, c. 1908

➤ *Begin the Historic Mall walking tour at the corner of Main Street and East Avenue in front of the Chamber of Commerce.*

**17 Phelps Building (1866) and Cogel Building (1874)
433 – 439 Main Street**

The Round-arched Romanesque style Phelps Building is significant for its association with W.W. Phelps, one of Red Wing's earliest citizens. Phelps was appointed to supervise the U.S. Land Office in Red Wing (along with Christopher Graham) and was one of two original Congressmen from Minnesota. The Italianate style Cogel Building was constructed by Christopher Cogel and Charles Betcher, two prominent 19th Century Red Wing businessmen. The Cogel Building originally consisted of three stories; however, the upper story was removed in 1883 after a fire. Both buildings, which serve as a visual gateway to Red Wing's historic commercial district, were restored in 2004.

**18 John H. Rich Park (1907)
Between Main and Third Streets and East and West Avenue**

John H. Rich, a founder of the Red Wing Civic League, personally financed the development of this park. Originally named Broadway Park, the area was a former sand lot between the library and the post office. The classically designed park is landscaped with a fountain, pool, pergola, limestone sidewalks, granite benches, and symmetrically-designed plantings. A Veterans Memorial was installed on the north end of the park in 1988 to honor all Goodhue County citizens who have lost their lives during military service.



Red Wing Post Office, constructed 1906

**19 U.S. Post Office (1906)
222 West Avenue**

The two-story Classical Revival style Post Office building was designed with five bays, a central three-bay projection with arcades and pilasters.

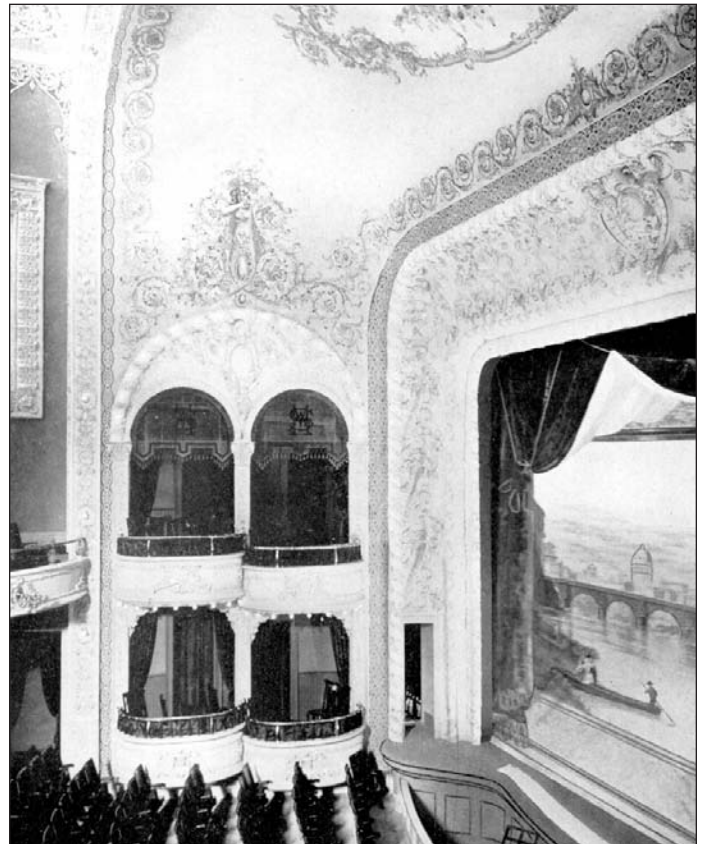
**20 T.B. Sheldon Memorial Auditorium (1904)
443 West Third Street**

A grain merchant and business leader, Theodore B. Sheldon bequeathed half of his estate to be used for a public purpose. After his death in 1900, his trustees chose to construct the T.B. Sheldon Memorial Auditorium. The 1904 building is believed to be the first municipally-owned and operated playhouse west of the Mississippi River.

The gray brick building of Renaissance Revival style, designed by Lowell Lamoureaux (who also designed Red Wing City Hall) had an interior described as a "jewel box" with ornate plaster work in ivory and gold set off against the deep red carpets and velvet draperies.

Damaged by fire, the building was reconstructed in 1918. Motion pictures, introduced at the auditorium in 1917, became so popular that the building was remodeled in 1936 to provide additional seating.

In 1988, the Auditorium was restored to its 1904 appearance with financial support from the Red Wing Area Fund, local corporations, individuals, and the passage of a bond issue.



*Interior view of proscenium arch and box seats,
T.B. Sheldon Auditorium, 1904.*

**21 Christ Episcopal Church and Parish House (1871, tower completed 1898, Parish House completed 1910)
Occupies the block bordered by East and West Avenues and Third and Fourth Streets**

The 1871 building replaced an 1859 small frame church on the same block. Plans were adopted from those of a church in Waterloo NY that the Rev. Edward Welles (first pastor of the church) had attended as a boy. The Waterloo Church had been copied from a church in England.

The Gothic Revival Church was built from locally quarried limestone and the beautiful woodwork is hewn from native butternut. The spire was built in 1898 completing the tower and the “Americana carillon” chimes, which ring out each day, were added in 1960.

The Church Parish House which faces Fourth Street was designed in English Tudor Revival style by architect Edwin Hewitt and built in 1910.



*Red Wing's Bicycle Club in front of Christ Church, 1890's.
Present spire was added to the church in 1898.*

**22 First United Methodist Church (1909)
403 East Avenue**

The Rev. Chauncey Hobart preached the first Methodist sermon in Red Wing in the spring of 1853 in the Presbyterian log house. The congregation completed and dedicated a new church building in June, 1858. Just one year later the church was destroyed by a storm and was rebuilt and dedicated in 1860. After that church was destroyed by fire in 1907, the present building was dedicated in 1909. The new church, built with local limestone in the Romanesque style, has two crenellated towers, pointed arches, wooden window tracery, buttresses and finials.



Central Park, 1917

**23 Central Park (1871)
Between Fourth and Fifth Streets and East and West Avenues**

Hamline University, standing at the southern end of the present Central Park, was opened for students in 1856. In 1869 the institution closed and relocated to St. Paul. The City purchased the Hamline block in 1871 to establish the park.

The balustrade wall located at the south end of the park was constructed at the end of the 19th Century from local limestone. The north band shell, dedicated on July 4, 2009, was a gift to the City of Red Wing from The Jones Family Foundation.

**24 St. John's Evangelical Lutheran Church (1878, 1931, 1952)
425 East Avenue**

Baptismal records for St. John's date back to 1855 when the small congregation met in private homes. A small log church was built in 1861. The present red brick Gothic style church was constructed in 1878 and services were held in German until 1901. Note the beautiful stained-glass windows above the front entrance and in the tower which were installed in December, 1964.



First United Methodist Church, 1909



Goodhue County Government Center, c. 1932.

**25 Goodhue County Government Center (formerly Goodhue County Courthouse) (1931-1932)
West Fifth Street**

Goodhue County was organized in 1854. Four years later the original Courthouse, a rugged brick building with a cupola, was built on this same location. That building was demolished in 1931. The bell from the first courthouse is now displayed inside the front entrance of this building. Architects Buechner and Orth of St. Paul designed the 1932 building. The construction costs, \$295,882, were completely paid by the time the building was completed. The three-and-one-half story granite building is of WPA Moderne style with a nine-bay façade and windows arranged in vertical bands with decorative rosettes. The interior retains its original ornamentation; the second floor rotunda is well worth viewing.

**26 First Lutheran Church (1895, 1948, 1963, 2001)
Fifth Street and West Avenue**

Dr. Eric Norelius organized this church as the Swedish Evangelical Lutheran Church of Red Wing in 1855. In 1867, a brick Gothic style building with a 130-foot tower was built at the Fifth Street and West Avenue site. Prior to that, the congregation helped establish Gustavus Adolphus College at the corner of Franklin and Fifth Streets (see Number 46) in 1862. In 1895, under Pastor Gustav Rast, the stone church was erected. Without a contractor, Pastor Rast supervised the work of stone

masons and carpenters hired as day workers.

**27 Citizen's Building (1930)
426 West Avenue**

Goodhue County now owns the building originally the home of the Citizen's Fund Mutual Fire Insurance Company, founded in 1914. St. Paul architect William Ingeman designed the two-story WPA Moderne style building. Note the fire mark incised



Citizen's Fund Mutual Building, circa 1930's.

reliefs and the red wing doors.

**28 St. Paul's Evangelical Lutheran Church
(1926, 1998)
Fourth and West Avenue**

Formally organized in 1886, this present building replaced an earlier frame church building that was moved onto this site in 1892. The brick and stone edifice, built in 1926, is faced in Chaska brick with Bedford stones set in as trim around the windows and doors. The most outstanding stained-glass window, located behind the altar, was designed in the Munich, Germany studios of Von Gerichten Art Glass and was a gift from the Sunday School children and John Hjerstad, who was active in the Sunday School. Thus it has become known as the "Sunday School" window and its inscription follows this theme, "Suffer the little ones to come unto me."



C.J. Ford Smith House, May 1895

Home construction in this residential area began shortly after it was included within the original plat of the City in 1853. Attracted by the area's gently sloping topography and its close proximity to the City's riverfront commercial and industrial core, early merchants and professional men invested in this neighborhood, often purchasing several adjoining lots within a block. The first homes constructed incorporate elements of the Greek Revival and Gothic Revival styles popular during the mid-nineteenth century.

Development within the neighborhood intensified during the 1860s and 1870s as profits from the lucrative wheat trade and successful manufacturing ventures were invested in a number of substantial Italianate style homes. Stick style and Queen Anne style homes appeared during the 1880s and 1890s. The early twentieth century brought Classical Revival and Prairie School style homes to the neighborhood, along with a few scattered bungalows and foursquares.

Though numerous changes have occurred to the neighborhood and individual houses over the past few decades, the area retains much of its original character. The neighborhood was listed on the National Register of Historic Places in 1982 and it continues to be a well-maintained area where the residents share a special sense of pride in their connection with Red Wing's past.

✦ *Begin the tour of the West Residential Historic District at the Corner of Third Street and West Avenue and walk west along Third Street.*

**29 C.J. Ford Smith House (1857)
617 Third Street**

Just four years after arriving in Red Wing, merchant C.J. Ford Smith had amassed the means to build this Greek Revival style home. The front facing gable, emphasized by wide cornice boards and returns, and the offset front entrance are typical details of that style. However, the stepped side gable and the lightness of the detailing suggest the earlier Federal style.

✦ *At the corner of Third and Dakota Streets look across and to your right to view the Hewitt Laboratory.*

**30 Dr. Charles N. Hewitt Laboratory (1857)
216 Dakota Street**

This building's simple symmetrical saltbox form is unusual but it is most noted for its association with public health pioneer Dr. Charles N. Hewitt. Hewitt came to Red Wing in 1867 after serving as an army surgeon during the Civil War. He was responsible for the creation of the Minnesota State Board of Health in 1872 and served as its executive secretary for more than 25 years. In 1890, after studying at the Pasteur Institute in Paris, Hewitt established in this building the first laboratory for producing smallpox vaccine in Minnesota.

**31 Pratt-Taber House (1876)
706 West Fourth Street**

The prosperity that the wheat trade brought to Red Wing is reflected in the imposing Italianate style homes constructed here during the 1870s. This house displays the style's typical low pitched roof with front pediment, emphasized with bracketed eaves and an oculus window, segmental-arched windows and wrap around front porch with an offset entrance. The porch railings incorporated a star motif, reflecting the widespread patriotism associated with the nation's centennial year. Albert Pratt was a prominent local banker.

32 James E. Teele House (1889)
709 Fourth Street

Although the home's multi-gable roof and irregular form are typical of the Queen Anne style, its upper stories hint toward the Shingle Style with their cladding of plain and decorative shingles.



Peter Daniels House, constructed 1865

33 Peter Daniels House (1865, 1878)
725 Fourth Street

Peter Daniels came to Red Wing in the late 1850s and established a large sawmill. He remodeled his house with Italianate style details in 1878. Note the deep overhanging eaves with paired brackets and the carved moldings surrounding the double and triple hung windows. The rooftop cupola was removed and the front veranda reduced to a single door-sheltering bay during the early twentieth century.

34 Theodore B. Sheldon House (1875)
805 Fourth Street

After arriving in Red Wing in 1856 and opening a dry goods store, Sheldon invested successfully in a variety of local enterprises including grain warehouses and mills, banking, transportation and clay industries. His elaborate home, constructed in the French Second Empire style, reflected his prominence within the community. While the home's distinctive mansard slate roof was removed due to water damage in 1958, its ornate interior woodwork and decorative plaster remain intact.

35 Green-Wilder House (1859)
807 Third Street

Metal siding stripped the wide cornice and corner boards from this Greek Revival style home. It retains its original window patterning and offset, slightly recessed front entrance with side-lights and transom. Constructed for Isaac Green, it was long occupied by Judge Eli T. Wilder.

36 Horace S. Rich House (1877)
818 Third Street

Horace Rich was instrumental in establishing the vitreous sewer pipe industry in Red Wing. Sewer pipe production utilized local coarse clay which was unsuitable for the production of stoneware. Originally Italianate in style, the Classical Revival porch was added in the early twentieth century. The home is now a bed and breakfast inn.

37 Brand-Warner House (1858-1860)
827 Third Street

This home's steeply pitched roof, arched windows and almost icicle-like trim ornamenting the eaves are all typical details of the Gothic Revival style.



T.B. Sheldon House, constructed in 1875

38 Betcher-Eames House (1867)
905 Third Street

Few homes in Red Wing are pristine examples of a specific architectural style; most combine details of several styles. This home's L-shaped mass and wide cornice boards with returns are Greek Revival while the cornice brackets, window surrounds and paneled porch posts are more typical of the Italianate style. Charles Betcher established one of Red Wing's earliest and longest-lived lumber and millwork businesses.

☞ *The Third and Hill Streets intersection has been termed "the most architecturally significant intersection in Minnesota." The next three homes listed are outstanding examples of their respective styles.*

39 James Lawther House (1857, 1872)
927 Third Street

Inspired by Orson Fowler's book *A Home for All or the Gravel Wall and Octagon Mode of Building* (first published in 1848), Lawther built his impressive brick octagon in 1857. The unusual plan was purported to be both economical and beautiful, approaching nature's most ideal form, the sphere. Lawther came to Red Wing as a merchant but amassed his fortune through savvy real estate speculation. In later years he contributed generously to numerous civic causes. This is now a bed and breakfast inn.



James Lawther Octagon House constructed 1857, additions 1872.

40 E.S. Hoyt House (1913)
300 Hill Street

One of Purcell, Feick and Elmslie's most successful Prairie School style homes. The low-pitched roof and bands of leaded glass casement windows emphasize the broad horizontal lines of the house. Notice the sawed wood designs ornamenting the house, particularly the decorative screen shielding the garage passageway which faces Hill Street.



E.S. Hoyt House, constructed 1913

41 Philander Sprague House (1868)
1008 Third Street

A classic example of the French Second Empire style with its prominent tower, concave mansard roofs and richly detailed cornices and window surrounds. Sprague founded the first terracotta factory west of Chicago in Red Wing after the Civil War and incorporated the clay material into his home's ornamental window moldings.

☞ *At Fourth and Pine Streets, before turning east (left) view the distinctive limestone Hawley House across Fourth Street.*

42 A.B. Hawley House (1874-1875)
1105 Fourth Street

The Italianate style rendered with local stone. Hawley was a physician who arrived in Red Wing in 1857. During the 1890s, the home was used as the headquarters of the Red Wing Commercial Club, the forerunner of the Chamber of Commerce. This is now a bed and breakfast inn.

43 Charles A. Betcher House (1908)
1025 Fourth Street

An English Tudor Revival style home constructed from the designs of St. Paul architect Clarence Johnston, Jr. An influential civic leader, Betcher was manager and president of the lumber company established by his father in 1859 and associated with a number of other local manufacturers.

44 John H. Rich House (1900)
1015 Fourth Street

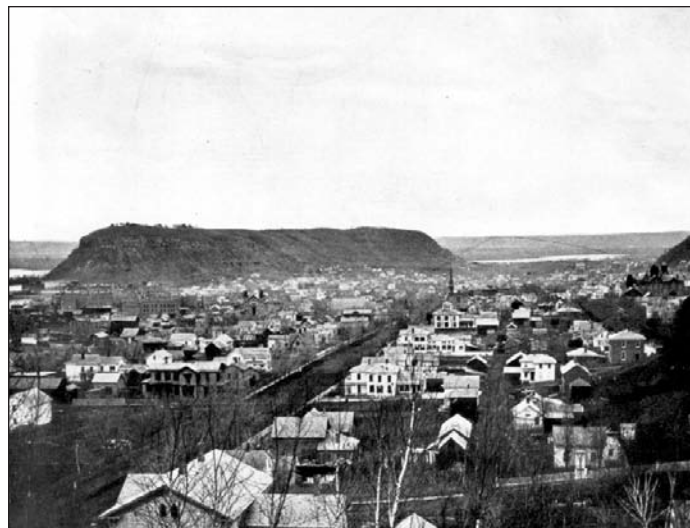
As mayor and founder of the Red Wing Civic League, Rich had advocated use of classically-inspired architecture for public buildings. His affection for the style is evident in his home, another Clarence Johnston design. Founder of the J.H. Rich Sewer Pipe Company and later president of the consolidated Red Wing Sewer Pipe Company, Rich was also involved in milling, banking, and a local hat manufacturing firm.

45 Henry P. McIntire (1868-1870)
919 Fourth Street

McIntire was an early retail partner with T.B. Sheldon and later helped found the First National Bank of Red Wing. His home combines the proportions and 6-over-6 window detailing of the Greek Revival style with Italianate style pierced board porch posts.

46 Swedish Evangelical Lutheran Church
(1856, 1871)
830 Fifth Street

In 1862 Rev. Eric Norelius established an academy in this building that eventually evolved into Gustavus Adolphus College. The building, remodeled to its present appearance in 1871, was used first as a parsonage and later as a boarding house for Swedish immigrants.



View of Red Wing looking east down Fourth Street, 1875.

47 F.W. Hoyt House (1875)
803 Fifth Street

Constructed in the Italianate style for attorney and banker F.W. Hoyt. In 1886, Lucius F. Hubbard, a pioneer Red Wing newspaperman and Civil War military hero who served as Governor of Minnesota from 1881-1887 occupied the house.

48 Horace S. Rich House (1880)
722 Fifth Street

This home combines the asymmetrical massing and varied siding materials associated with the Queen Anne style with flat board Stick Style trim. Rich had this home constructed in 1880, just three years after completing his home at 818 Third Street (Number 36 on the walking tour).

49 United Lutheran Church (1905)
624 Fifth Street

The construction of the Norwegian Lutheran Trinity Church began in 1902. In February, 1930 that congregation merged with St. Peter's Lutheran under the new name United Lutheran. The church combines elements of the Gothic and Romanesque styles.

➤ Continue eastward on Fifth Street. Turn left at West Avenue and walk down to Levee Park.



Red Wing has 22 individually listed buildings and sites and three historic districts on the National Register of Historic Places. The following buildings are listed properties which are not on this walking tour but are particularly significant to the Red Wing area.

**Chicago Great Western Depot (1906)
Main and Fulton Streets**

In 1906 the Chicago Great Western acquired two smaller railroad lines, the Minnesota Central with connections to Cannon Falls and the Duluth, Red Wing, and Southern with connections to Zumbrota. The Company built this two-story brick depot in Red Wing for their divisional headquarters. The first floor of the depot served as the passenger space and the second floor housed the offices of the company. North Central Food Systems, Inc. purchased the building in 1979, redesigning the interior for a Hardee's Restaurant. In 2006 Caribou Coffee took over the space.

**Minnesota Stoneware-Red Wing Potteries (1883, 1900)
1997 West Main Street**

One of Red Wing's most important industries, the Minnesota Stoneware Company-Red Wing Potteries complex is located just west of the downtown area. Originally built in 1883, the buildings burned to the ground in 1900 and were rebuilt. Dinnerware manufacture began replacing stoneware in the 1920s and continued until 1967 when an employment dispute led to company liquidation. The building has been remodeled into Pottery Place Mall that houses factory outlet stores, restaurants, offices and apartments, and the Red Wing Pottery Museum, which displays rare and historical samples of stoneware.

**Tower View (1915-1920)
Highway 61 and Highway 19**

On the west edge of the City on Highway 61, Alexander P. Anderson, a botanist specializing in starch research and the originator of puffed cereals, built Tower View. The buildings consist of a Georgian Revival style house, a laboratory complex and a water tower, all constructed of reinforced concrete faced with red brick, with red tile roofs. Prof. Anderson used the laboratory buildings for research and the development of cereals on a pilot plant scale for the Quaker Oats Company of Chicago. Interested in many aspects of nature, Anderson carried out research on edible crops, properties of wood and aerodynamics. The buildings

and adjacent land have now been converted into the Anderson Center for Interdisciplinary Studies.

**Goodhue County Historical Society
1166 Oak Street www.goodhuehistory.mus.mn.us**

Open 10 a.m. to 5 p.m. Tuesday through Friday and 1 to 5 p.m. weekends. Research library open Tuesday through Friday from 1 to 5 p.m. (Winter hours - check Web-site).

The history center offers a wide variety of exhibits on the history of Red Wing and Goodhue County.

To reach the museum from downtown, drive south (away from the river) on West Avenue to Seventh Street and then take a sharp right turn up College Avenue. At the end of College Avenue, turn right on Oak Street.



Minnesota State Training School, circa 1890

**Minnesota State Training School (1890)
1079 Highway 292**

Located in east Red Wing along Highway 61 the imposing castle-like administration building and dining hall of the Minnesota State Training school has been a landmark in the upper Mississippi Valley for 100 years. One of the first correctional schools in the state, it was viewed as a cultural and educational institution where boys and girls (at times) would receive help and training rather than punishment. The architectural detailing of the remaining original buildings (the administrative and dining hall building, the vocational building and the chapel) is typical of the Richardsonian Romanesque style built with massive stonework, round-arched entrances and windows with decorative carvings.



Third Street during the holidays. 1940's

Acknowledgments

This brochure was prepared by Brian Peterson, City of Red Wing Planning Director, Carrie Conklin Becker, Goodhue County Preservation Project, with updates provided by Char Henn, Goodhue County Historical Society, the Red Wing Heritage Preservation Commission, and Steve Kohn, City of Red Wing Assistant Planning Director. Brochure design: RiverTown Printing Group. Production: RiverTown Printing Group. Photographs are courtesy of the Goodhue County Historical Society, and the R.J. Kosec Collection of the Goodhue County Historical Society.

This project has been financed in part with funds provided by the State of Minnesota from the Arts and Cultural Heritage Fund through the Minnesota Historical Society.

Volume IV, First Printing, 2009

Copyright © 1989, City of Red Wing
Heritage Preservation Commission



With funding from: The City of Red Wing, the Red Wing Heritage Preservation Commission, the Red Wing Visitor's and Convention Bureau & Red Wing Downtown Main Street, Inc.

For more information on Red Wing's historic sites and districts contact the Red Wing Heritage Preservation Commission, 419 Bush Street, Red Wing, Minnesota 55066.
(651) 385-3622.