



=HOOK TURNS FOR BIKES

WHAT IS A HOOK TURN?

A hook turn is a right turn from the left lane.

A hook turn may be safer and more convenient for cyclists wanting to make a right turn on some roads, such as those with heavy traffic or with multiple lanes. When making a right turn, cyclists have the option of making a hook turn from the left lane rather than making a normal right turn at all intersections. This can be done even if there are no markings.

We have provided hook turn facilities at some intersections to assist cyclists. As of September 2013, there are hook turn facilities at:

- Port Road/ West Terrace
- East Terrace/ Grenfell Street
- Flinders Street/ Pulteney Street

HOW DO I HOOK TURN? (CYCLISTS)

If there are traffic lights

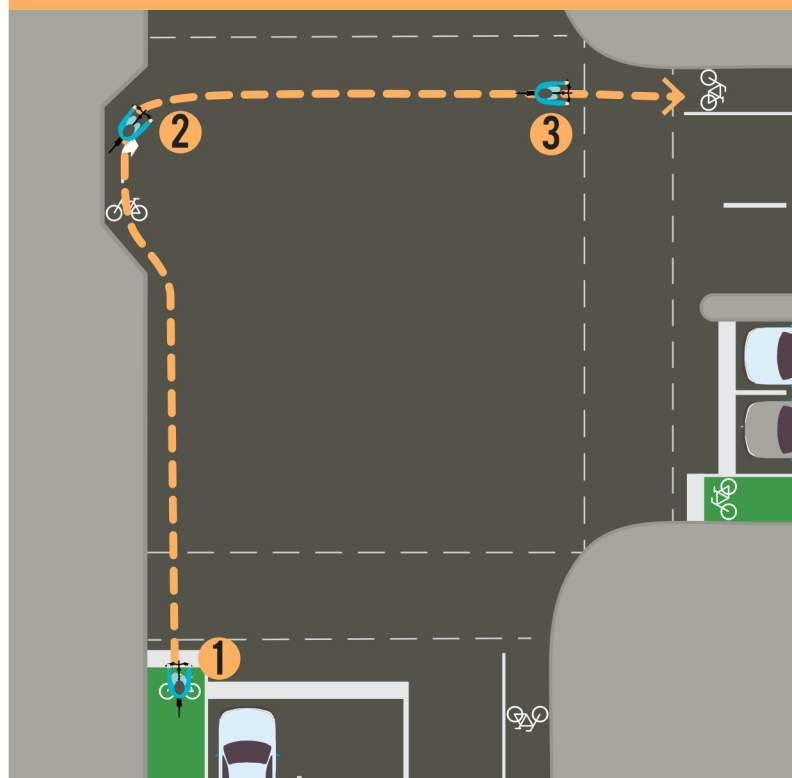
- 1** Approach and enter the intersection from the left lane – on a green light.
- 2** Move forward, stop on the opposite corner (in the hook turn box if there is one) and wait until the traffic lights on the road that you are entering change to green.
- 3** Proceed into the road that you are entering.

If there are no traffic lights

- 1** Approach and enter the intersection from the left lane.
- 2** Move forward, stop on the opposite corner (in the hook turn box if there is one) and wait until you have given way to approaching vehicles on the road that you are leaving.
- 3** Proceed into the road that you are entering.

If you have questions or feedback about hook turns or hook turn storage boxes please contact Adelaide City Council on **8203 7203**, visit smartmoveadelaide.com.au, or join the conversation at [facebook.com/CityofAdelaide](https://www.facebook.com/CityofAdelaide). For more information on bike riding, road rules and safety visit www.sa.gov.au/cycling.

HOOK TURNING AT A T-JUNCTION



HOOK TURNING AT AN INTERSECTION

