

# GRANDVIEW CLOCHE

BY KAREN JULIANO

FREE PATTERN COURTESY OF



7505 Grandview Ave.  
Arvada, CO  
303-456-20251

## ABOUT KNIT KNACK

*Nestled into one of Olde Town Arvada's 140-year-old mercantiles is the Knit Knack – the Denver metro area's most beautiful yarn shop. Gorgeous yarns and fibers, hard wood floors, exposed red brick, and antique fixtures: This is a place that you must experience! Let your fingers wander through sumptuous silks, rich, colorful wools, soft cashmeres, yummy yak, and lovely llama and alpaca yarns . . . it's a sensory experience that you shouldn't miss.*

*While the building and surroundings have an old-world flair, there are no stodgy old ladies in this yarn shop! Our community of knitters and crocheters meet regularly for open knitting – please join us ! Stuck on a project and need advice? We're happy to help. We'll even make you a yummy latte to round out that perfect day for knitting!*

*Yarn shop. Coffee bar. Gathering place.*

*Knit happens—get in here!*



## SUPPLIES

- 1 skein Sulka Legato, Claret
- US 4 circular, 16", and double points
- 2 cable needles
- Tapestry needle
- Waste yarn
- Locking stitch markers

## GAUGE

22 sts and 32 rows = 4" in stockinette st, blocked

## SIZE

To fit a 22" head (woman's medium)

COMPLIMENTARY PATTERN IN HONOR OF THE 2015 YARN ALONG THE ROCKIES YARN CRAWL.



## STITCHES AND TECHNIQUES

**Double wrap (DW)** –Wrap yarn around RH twice instead of the usual single wrap.

### 3-needle bind off

With RS of fabric together, hold needle with CO sts and needle with last row of sts in the left hand.

**Step 1:** Insert RH needle knitwise into the first st on the LH needle closest to you and *at the same time* knitwise into the first st on the back needle. Wrap RH needle as for a normal knit st and draw this new st back through both sts. One st on RH needle.

Repeat Step 1. There are now 2 sts on RH needle.

**Step 2:** As with a normal BO, with a needle tip from LH, pick up the first (right most) st on the RH needle, pull it over the 2<sup>nd</sup> st and drop off both needles. One st bound off, one st remains.

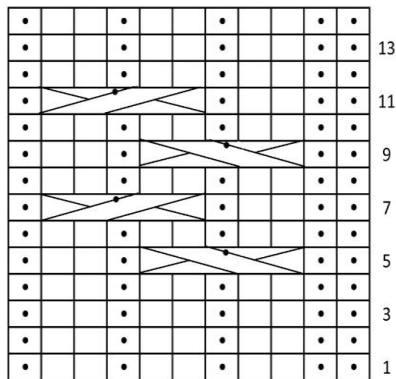
Repeat Step 1: 2 sts on RH needle; repeat Step 2 to BO 1 st. Cont in this manner until 1 st remains on RH needle.

## DIRECTIONS

### Cabled hat band

With yarn held double, provisionally CO 11 sts. Following either Cable Pattern or Cable Pattern Chart, work Rows 1 – 14 a total of 10 times, then repeat Rows 1 – 13 one time more.

### Cable Pattern Chart



• p on RS, k on WS

□ k on RS, p on WS

 C5F

 C5B

### Cable Stitch Pattern

Row 1: P2, [k2, p1] 3 times.

Row 2 and all WS rows: Work as established.

Row 3: P2, [k2, p1] 3 times.

Row 5: P2, C5F, p1, k2, p1.

Row 7: P2, k2, p1, C5B, p1.

Row 9: Repeat Row 5.

Row 11: Repeat Row 7.

Row 13: Repeat Row 1.

Row 14 (WS): Work as established.

### Cable Stitches

**C5F** – Sl next 2 sts from LH needle to first CN and hold in front; sl next st from LH needle to second CN and hold in back. K2 from LH needle; p1 from CN held in back; k2 from CN held in front.

**C5B** – Sl next 3 sts from LH needle to CN and hold in back. K2 from LH needle; return third (left most) st from CN to LH needle and move CN to front. P1 from LH needle; k2 from CN.

Place stitches from provisional cast on onto a spare needle. With right sides together, join hat band using 3-needle bind off. (Make sure there's no twist!) Reserve last stitch for next section.

With RS facing, pick up 119 stitches all the way around the hat band edge. (It should be the edge with the two purls. Including last st from BO, 120 sts. Place marker for end of round and begin working in the round.

## GRANDVIEW CLOCHE - KNIT KNACK

*Yarn Along the Rockies 2015*

Rnd 1: [P9, k1] – repeat within brackets to end of round.  
Rnd 2: [P9, sl 1] to end.  
Rnd 3: [P9, DW] to end.  
Rnd 4: [P9, sl 1\*] to end.  
Rnd 5: [P9, sl 1] to end.

\*When slipping sts that were double wrapped the round before, slip 1 wrap and let the other fall off.

Repeat Rnds 3 – 5 until hat is 6 ½” from bottom of hat band, or to 1 ½” shorter than desired finished length, ending after a Rnd 3.

### **Crown**

Rnd 1: [P2tog, p5, p2tog, sl 1\*] to end.  
Rnd 2: [P7, sl 1] to end.  
Rnd 3: [P7, DW] to end.  
Rnd 4: [P2tog, p3, p2tog, sl 1\*] to end.  
Rnd 5: [P5, sl 1] to end.  
Rnd 6: [P5, DW] to end.  
Rnd 7: [P2tog, p1, p2tog, sl 1\*] to end.  
Rnd 8: [P3, sl 1] to end.  
Rnd 9: [P3, DW] to end.  
Rnd 10: [P3tog, sl 1\*] to end.  
Rnd 11: [P1, sl 1] to end.  
Rnd 12: [K2tog] to end.

Break yarn, thread on yarn needle and thread through last 12 sts. Weave in tail on WS of hat.

### **Brim**

Make a slip knot and place on needle.

#### *Increase*

Row 1 (WS): Kfb (2 sts).  
Row 2 (RS): Pfb, p1 (3 sts).  
Row 3: K1, p1, k1.  
Row 4: Pfb, sl 1, p1 (4 sts).  
Row 5: K1, p1, k2.  
Row 6: Pfb, p1, sl 1, p1 (5 sts).  
Row 7: K1, p1, k3.  
Row 8: Pfb, p2, sl1, p1 (6 sts).  
Row 9: K1, p1, k4.  
Row 10: Pfb, p3, sl 1, p1 (7 sts).

#### *Work even*

Row 11: K1, p1, k5.  
Row 12: P5, sl1, p1.

Repeat last two rows 19 times more, or to 1” less than desired finished width of brim (piece should be approximately 5 ½” from CO).

#### *Decrease*

Row 1: P1, p2tog, p2, sl 1, p1 (6 sts).  
Row 2: K1, p1, k4.

Row 3: P1, p2tog, p1, sl 1, p1 (5 sts).

Row 4: K1, p1, k3.

Row 5: P1, p2tog, sl 1, p1 (4 sts).

Row 6: K1, p1, k2.

Row 7: P2tog, sl 1, p1.

Row 8: K1, p1, k1.

Row 9: K2tog, p1.

Row 10: K2tog.

Break yarn leaving an 8" tail; pull tail through last st. Use locking stitch markers to pin brim to bottom of hat, centering brim in front of hat. Be sure that RS (purl side) is facing out, and that slip-stitch detail is at bottom of brim. Sew brim to hat with long tail.

Weave in all ends; block hat as desired. Take pictures and post on Ravelry and Facebook. Tag Knit Knack!

#### ABBREVIATIONS

BO – bind off  
C5B – see Stitches  
C5F – see Stitches  
CN – cable needle  
CO – cast on  
DW – double wrap (see Techniques)  
k – knit  
k2tog – knit next 2 sts together  
kfb – knit front and back of  
next st. – 1 st increased  
LH – left hand  
p – purl  
p2tog – purl next 2 sts together  
p3tog – purl next 3 sts together  
pfb – purl front and back of  
next st. – 1 st increased  
RH – right hand  
Rnd – round  
RS – right side  
sl – slip st purlwise wyib  
st(s) – stitch(es)  
St. st – Stockinette st (k on RS, p on WS)  
wyib – with yarn in back  
WS – wrong side