

Free pattern courtesy of



6520 Shoup Road
Black Forest, CO 80908
(719) 495-7747

Val's Spumoni Ice Cream Shawl

By Chris McHugh

About Table Rock Llamas

Almost 30 years ago a couple, Ray and Valerie, decided to purchase some rural property on the eastern plains of Southern Colorado called Table Rock. Ray's sister, Barbara, owned several sheep and wanted to part ways with them. Ray and Valerie decided to take in the sheep and as the story goes, the sheep multiplied and Ray and Valerie found themselves in the sheep-raising business. They thoroughly enjoyed the business of raising sheep and built a successful operation.

Meanwhile Kris, Ray's other sister and a llama enthusiast, suggested they use llamas to protect the sheep from predators, so Valerie bought one. Valerie cared for the llama, and it gave Kris a reason to visit her brother and sister-in-law. Valerie and Kris grew very fond of the llama so they decided to sell the sheep and buy more llamas. Like the sheep, the llamas multiplied and they found themselves in the llama business.

The ladies decided to name the business after the area they lived in. Thus begins what has become Table Rock Llamas. Over the past 20 years the business has evolved from showing their llamas at agricultural shows to processing their wool and selling the raw material. The success of their shows and quality products has spawned the opening, 10 years ago, of The Table Rock Llamas Fiber Arts Studio, located in Black Forest, Colorado, just north of Colorado Springs.

Table Rock Llamas Fiber Arts Studios offers a wide variety of products and services for fabric production and workshops for artists of all skill levels.



Supplies

- ☞ Yarn: 550 yards from the Wheel, Loom & Dye pot hand-dyed yarn in fingering weight or 420 yards Heather Forest Green hand-dyed yarn in light worsted weight
- ☞ Needles: long circulars, US 4 (fingering weight) or US 6 (light worsted weight)
- ☞ stitch markers
- ☞ tapestry needle

Gauge

Varies with yarn and knitter.

Size

Approximately 22 inches by 50 inches but size will vary with lace repeats, needle size, and yarn choice.

Stitch Abbreviations

CO	Cast On
K	Knit
P	Purl
K2TOG	Knit two stitches together
ST	Stitch
SSK	Slip next 2 sts knitwise, return them to left needle and knit together
SK2P	Slip next 2 sts knitwise, knit next st, pass 2 slipped sts over knit st

One skein pattern for the 2014 Yarn Along the Rockies yarn crawl.



Directions

What follows are the pithy instructions to knit this very lovely yet simple lace shawl. The shawl is constructed as a top-down triangle.

Begin with a garter stitch tab:

Cast on 2 stitches and knit six rows.

Pick up 5 additional stitches from the garter stitch bumps by rotating the tab (7 STS).

Start knitting shawl body as follows:

Row 1: K2, YO K1 YO, K1 (mark this as center stitch), YO K1 YO, K2.

Row 2 (and all other even numbered rows): Purl all stitches except the K2's at the beginning and end of the row. Keep these stitches in garter stitch throughout the project.

Row 3: K2, YO, knit to the center stitch, YO, knit the center stitch, YO, knit to last 2 sts, YO, K2.

Row 4: same as Row 2.

Repeat rows 3 and 4 until you have 183 stitches (worsted weight shawl) or 203 stitches (fingering weight shawl).

From now on, you will work from the charts provided.

Chart I forms the main lace pattern.

K2, work Chart I to center stitch, knit the center stitch, work Chart I, K2.

Repeat Chart I as many times as you like.

Part A represents the beginning lace. Part B is the body of the lace and is worked in multiples of 10. Part C is the end lace pattern. Parts B and C are only worked once per row on either side of the center stitch. Part B is worked over the multiples of ten.

On the last repeat of Chart I, work the last 4 rows using Chart II.

Then complete the shawl using Chart III.

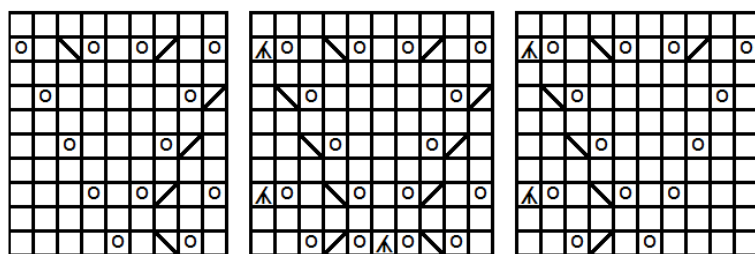
****Remember, charts are read bottom to top, right to left.**

Bind off: Use an elastic bind off such as the Russian bind off.

Finishing: Block and enjoy!



Chart I



Part C

Part B

Part A

Chart II

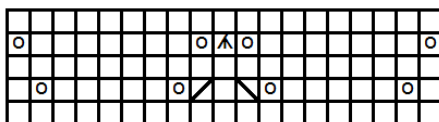
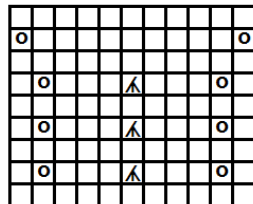


Chart III



Key

- YO
- Knit (RS); Purl (WS)
- SK2P
- K2tog
- SSK

References:

- 1) Shaping Shawls by Anna Dalvi, Cooperative Press, 2011
- 2) Knitting Lace Triangles by Evelyn A. Clark, Fiber Trends Inc., 2007
- 3) Wendy Knits Lace by Wendy D. Johnson, Potter Craft, 2011