

# 287 Wryneck

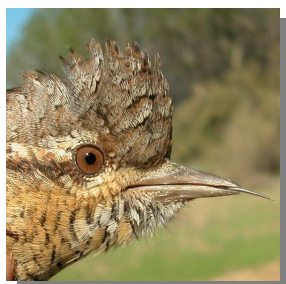


Wryneck. Spring. Adult (12-IV).

## WRYNECK (*Jynx torquilla*)

### IDENTIFICATION

16-18 cm. Brown and grey upperparts; grey underparts, with buff and barred breast; tail with grey and brown bars; grey-brown bill and legs.



Wryneck. Pattern of head, upperparts and breast.

### AGEING

4 types of age can be recognized:

**Juvenile** with paler plumage than **adults** and fresh; 10th primary is half length of 9th; iris grey; usually primary coverts with a pale patch "V" shaped on tips.

**1st year autumn** with fresh secondaries. meanwhile **adult** has worn secondaries; minute 10th primary after moult.

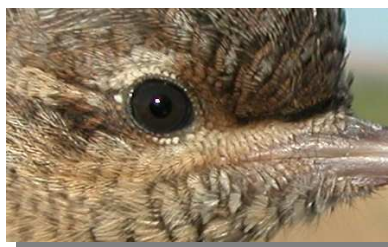
**2nd year spring** with poor differences in wear between primaries and secondaries; some birds with some retained juvenile secondary; iris grey brown.

**Adult in spring** with primaries more eroded than secondaries; in **autumn** has fresh body feathers, primaries, tertials and tail but secondaries are worn; iris reddish brown; primary coverts with white spots on tips but no "V" shaped.

**CAUTION:** "V" shaped patch on tips of primary coverts is very variable and not always is a valid character to ageing.



Wryneck. Ageing. Colour of iris: top adult; middle 2nd year; bottom juvenile.



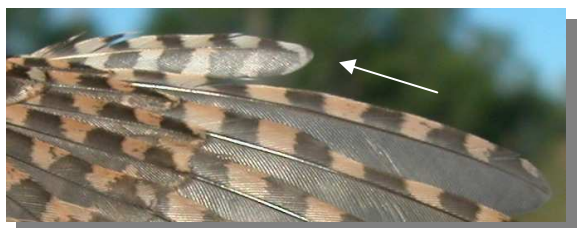
### SIMILAR SPECIES

This species is unmistakable.

### SEXING

Plumage of both sexes alike.

# 287 Wryneck



Wryneck. Ageing. Length of the 10th primary: top adult; bottom juvenile.



Wryneck. Spring. Juvenile (15-VI).

## MOULT

Complete **postbreeding** moult, changing in breeding areas all feathers except secondaries, which are moulted in wintering quarters. Partial **postjuvenile** moult, changing all feathers except some secondaries and all or part of primary coverts and tertials. Both types of age have a **prebreeding** moult including body feathers, wing coverts, tertials and tail.

## PHENOLOGY

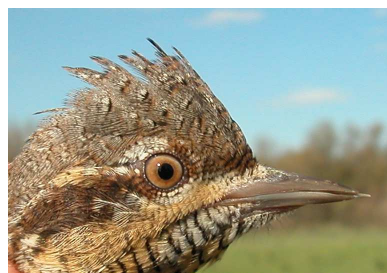
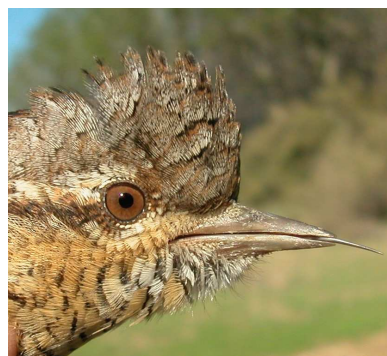
I	II	III	IV	V	VI	VII	VIII	IX	X	XI	XII

## STATUS IN ARAGON

Summer visitor breeding in forests from mountainous areas and Ebro river.



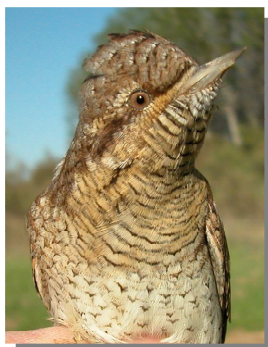
Wryneck. Spring. 2nd year (12-IV).



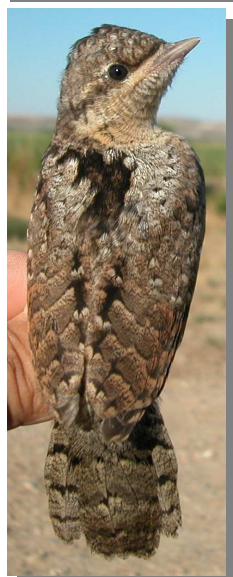
Wryneck. Spring. Head pattern and iris colour: top adult (12-IV); middle 2nd year (12-IV); bottom juvenile (15-VI).



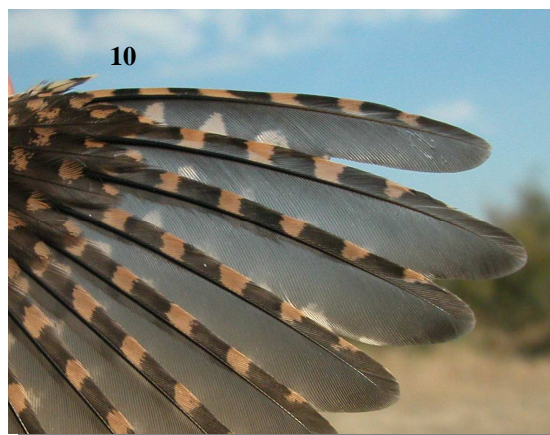
# 287 Wryneck



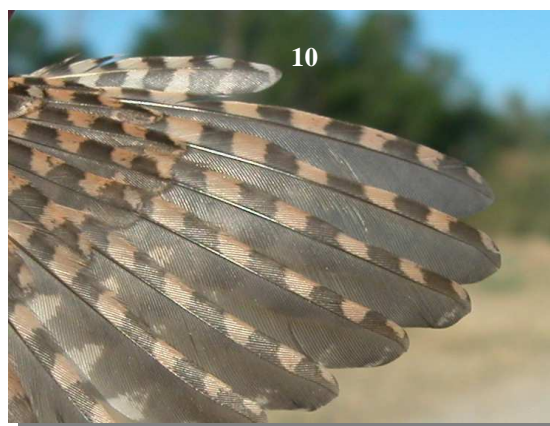
Wryneck. Spring. Breast pattern: top left adult (12-IV); top right 2nd year (12-IV); left juvenile (15-VI).



Wryneck. Spring. Upperparts pattern: top left adult (12-IV); top right 2nd year (12-IV); left juvenile (15-VI).



Wryneck. Spring. Adult/2nd year: length of 10th primary (12-IV).



Wryneck. Spring. Juvenile: length of 10th primary (05-VII).



Wryneck. Spring. Adult: pattern of tips of primary coverts (12-IV).



## 287 Wryneck



Wryneck. Spring. 2nd year: pattern of tips of primary coverts (12-IV).



Wryneck. Spring. Adult: pattern of strongly worn primaries (06-VI).



Wryneck. Spring. Juvenile: patch on tips of primary coverts with "V" shaped pattern (15-VI).



Wryneck. Spring. Adult: pattern of little worn primaries (05-IV).



Wryneck. Spring. Juvenile: patch on tips of primary coverts with "V" shaped pattern (15-VI).



Wryneck. Spring. 2nd year: pattern of primaries (05-IV).



## 287 Wryneck



Wryneck. Spring. Juvenile: pattern of primaries (15-VI).



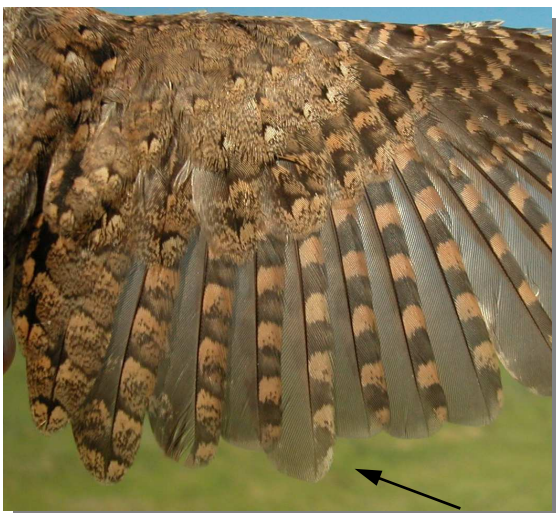
Wryneck. Spring. 2nd year: pattern of secondaries with all feathers moulted (05-IV).



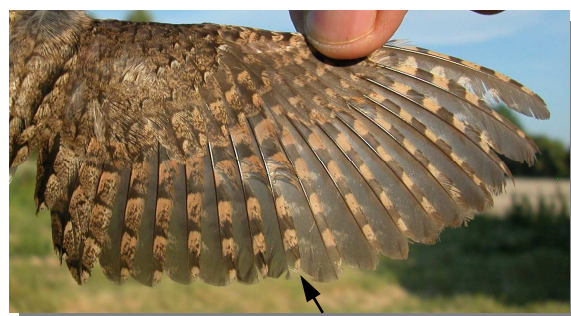
Wryneck. Spring. Adult: pattern of secondaries (05-IV).



Wryneck. Spring. Juvenile: pattern of secondaries (15-VI).



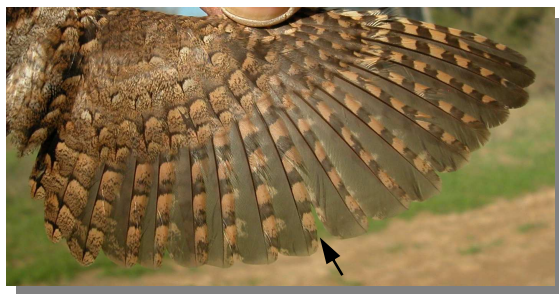
Wryneck. Spring. 2nd year: pattern of secondaries with one juvenile secondary retained (05-IV).



Wryneck. Spring. Adult: pattern of wing with strongly worn primaries (06-VI).



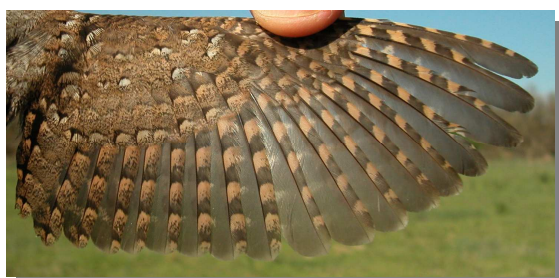
## 287 Wryneck



Wryneck. Spring. Adult: pattern of wing with little worn primaries (05-IV).



Wryneck. Spring. 2nd year: pattern of wing with one juvenile secondary retained (05-IV).



Wryneck. Spring. 2nd year: pattern of wing with all feathers moulted (05-IV).



Wryneck. Spring. Juvenile: pattern of wing (15-VI).



Wryneck. Autumn. Adult (06-IX).



Wryneck. Autumn. 1st year (14-VIII).



Wryneck. Autumn. Head pattern and iris colour: top adult (06-IX); bottom 1st year (14-VIII).



## 287 Wryneck



Wryneck. Autumn. Upperparts pattern: left adult (06-IX); right 1st year (14-VIII).



Wryneck. Autumn. 1st year: pattern of primaries (14-VIII).



Wryneck. Autumn. Breast pattern: left adult (06-IX); right 1st year (14-VIII).



Wryneck. Autumn. Adult: pattern of secondaries (09-IX).

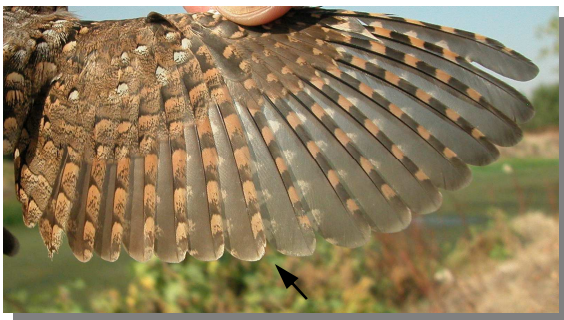


Wryneck. Autumn. Adult: pattern of primaries (09-IX).

## 287 Wryneck



Wryneck. Autumn. 1st year: pattern of secondaries (14-VIII).



Wryneck. Autumn. Adult: pattern of wing (09-IX).



Wryneck. Autumn. 1st year: pattern of wing (14-VIII).