



## “A CELEBRATION OF CHAMPIONS” 75TH ANNIVERSARY OF THE LOS ANGELES FIGURE SKATING CLUB



The behind the scenes preparations for our 75th Anniversary Gala Show, “A Celebration of Champions” are in high gear as our club prepares to honor 75 years of amazing skating and skaters on July 26, 2008, at the Pickwick Ice Center. Tickets are still available for the show, and you may purchase them online through a link on the club web site (<http://www.lafsc.org>), and in the pro shop at Pickwick Ice Center. Don't miss this awesome opportunity to meet and cheer on some of our club's former Olympic, World, and National Champions and Team Members in person, as well as the opportunity to see some of our up and coming skaters in numbers choreographed especially for the show. At press time, some of the past LAFSC champions and World and Olympic Team Members who are scheduled to be present include, Tai Babilonia and Randy Gardner, Linda Fratianne, Debi Thomas, Lisa Marie Allen, Todd and Jenni Sand, as well as reigning US Pairs Champions, Keauna McLaughlin and Rockne Brubaker, and numerous other past LAFSC skating champions and medalists. Following the event, for those purchasing a VIP ticket, we will have a reception held in the Pickwick Gardens for a meet and greet with many of our past champions. Please don't miss this once in a life time opportunity to participate in the celebration of your club's 75th Anniversary. For further information, please view our club web site. See you there!

### THE PRODUCERS— A YOU TUBE HIT!

“The Producers On Ice” an all adult production group, won the Tai Babilonia Trophy at the 2008 LAFSC Showcase For Skaters for the best pair or group theatrical performance. The production number was loosely based on the Mel Brooks movie, recently remade starring Nathan Lane and Matthew Broderick.

The ensemble of 20 skaters, many of who had never previously competed before, spent several weeks working on complex choreography which included a number of the cast dressed as old ladies with walkers. The cast included LAFSC Home Club

Members Maurice Palinski, Gary Correa, Wes Wheadon, Vicki Busch, Mary Flannery, Debbie Wolen, Joan Bys, Lori

Renee Neuman, Christie Gaumer, Betty Curtis, Colette Scott, and Jean Brillhante.



Stayton, Carla Golubski, and Stephanie Austin. Additional cast members included: Jeff Goldenberg, Carrie Gibbons, Steven Matthews, Tina Borsay,

The number was choreographed by LAFSC's own Denise Moore, with the able assistance of Mary Lucas and Trifun Zivanovic.

Video of the event was posted on Youtube, and quickly became a favorite with over one thousand hits in a very short time. If you weren't able to see the Production, the whole production number will be reprised at the 75th Anniversary Gala at the Pickwick Ice Center. Don't miss out on the chance to see this highly creative and entertaining number!

## Cracked Ice—Heard Round The Rink



College Bound this fall: Hayley SooHoo has been accepted to the College of William & Mary in Williamsburg, Virginia, and plans to study business. Sara Trunzo has been accepted to the University California at San Diego, and is also interested in trying to get together a collegiate team there. If you are interested, please contact Sara. Lauryn Lesovsky will be attending US Santa Barbara in the fall. Good luck to Hayley, Sara and Lauryn!

Congratulations are also in order to Jonathan Keen who graduated from the UCLA Law School with his Juris Doctorate! Jonathan is now a practicing attorney in Los Angeles!

Congratulations to the Los Angeles Ice Theater who took home the gold in the Senior Division at the inaugural U.S. Theatre On Ice Open Competition in Vermont. They placed first in both segments of the competition. Great job!

Healing wishes go out to Brooks Ishler and Sammi McCain. Brooks is fighting a foot problem, and Sammi recently broke her fibula. We hope to see you both back on the ice at the 75th Anniversary Show!

East West Ice Palace is busily abuzz in the thick of summer skating. Brooks Ishler's family is slowly getting back on its feet after a devastating house fire in March. Brooks sends out a huge thank you to the LAFSC for holding a drive to help his family. "Without the LAFSC, my family would still be needing a lot of things. Thanks so much for all you guys did. I'll never forget it" he said. Brooks just finished ninth grade with a stellar academic year. He made honor roll both semesters, was accepted into the National Honors Society and won a spot in the National Who's Who among American High School Scholars.

Brooke Johnson finished her year with all A's. In addition to her skating, Brooke is also a talented stage performer. Brooke won a roll in the Orange County My Art production of Annie. One of her many talents is her booming Broadway-style singing voice (have her sing for you sometime). She also secured a solo in her school's end of the year choir performance, plays the saxophone, and takes voice lessons.

Brooks and Brooke aren't the only multi-talented LAFSC skaters at East West. Brianna

Wynne also received all A's this past school year in her sixth grade class. In addition, Brianna was the recipient of a PACE award. PACE stands for Pursuit of Academic and Character Excellence. .

Brianna's sister, Shannon Wynne, is also off to a great start this year. She also finished her school year with all A's and competed in The Interclub and California Championships. Shannon did well at the California Championships placing third in pre-preliminary girls.

Brianna and Shannon had an even bigger event in their family. The girls and their three brothers welcomed new baby brother Brady to their big family. Congrats Wynne family on your new addition!

The Bender family took a trip after the Theatre on Ice Competition (Helen Bender is a member of the Championship Team) to Williamsburg, Jamestown and Yorktown. Lynn tells us this was a fabulous trip, and was a great history lesson, in addition to being a just an all around good time.

Another LAFSC member who is currently back east is Jessica Perino, who is currently training in Delaware with dance partner, William Avila, and coach Suzy Schurman. Jessica will be competing later this summer at the Lake Placid Dance Championships. Good luck Jessica. We'll be rooting for you!

Congratulations to Othniel Chan who won his event at the recent Hidden Valley Open. We also had several champions at this year's Interclub. Kudos to Angelyn Nguyen, Katarina Kulgeyko, Brenda Ji, Dustin Perini, Devin Perini, Spencer Howe, Taylor Humphrey, Haley Peters, and Heidi Han for their victories!

Congratulations are in order for LAFSC Board Member, Karen Dillon Pillsbury, who was married on July 12, 2008 to Davis Pillsbury. Karen and Davis were married in Basalt, CO on July 12, 2008. Karen and David will have homes in Los Angeles, Newport Beach, and Basalt, CO.

Jo Lawless' granddaughter, Erica, placed third in BIC Corporation's National essay contest. Winners were chose out of nearly 11,000 entries. She received a \$100.00 cash price in the contest, which was designed for students in grades four through six. Congratulations!

## TESTS PASSED

Listed below are tests passed by LAFSC home club members in May/June 2008. Slots to take tests are given out on a first come, first serve basis. Tests taken at other clubs are based on that club having reported the results to USFSA headquarters by the date of this report.

### Gold medalists are in bold.

Nicholas Abouzeid Pre-Juv MIF/FS

**Brittany Ahner Senior MIF**

Selina Amranyan Junior FS

Joan Bys Solo Hickory Hoedown,  
Solo Willow Waltz, Solo Ten  
Fox

Othniel Chan Intermediate FS

Caitlinn Concepcion Pre-Juvenile FS

Anne Eschen Pre-Preliminary FS

**Valeria Flores Senior MIF**

K. Leigh Furzer Junior MIF/FS

Catherine Giese Novice MIF

Spencer Howe Juvenile FS

Brooks Ishler Intermediate MIF

Brooke Johnson Intermediate MIF

Savannah Matlow Novice FS

Ayla McNeil Preliminary FS, Int. MIF

Yura Min Hickory Hoedown, Willow  
Waltz, Ten Fox

April Moon Novice MIF

Chloe Nakhjavanpour Pre-Preliminary MIF

Camille Ng Pre-Preliminary MIF

**Angelyn Nguyen Senior FS**

Nha-Quyan Nguyen Intermediate MIF

Gretchen Peckler Pre-Preliminary FS

Devin Perini Novice MIF

Dustin Perini Junior MIF, Novice FS

Stephanie Peterson Novice MIF

**Chadwick Phillips Senior MIF**

Ayda Rashtchi Juvenile MIF

Charlotte Rosenblum Solo Dutch Waltz, Solo  
Canasta Tango, Solo  
Rhythm Blues

Shayna Rothenberg Juvenile FS

Jillianne Marie Salas Novice FS

Hayley Soo Hoo Solo Quickstep,  
Solo Argentine Tango

Margaret Stevenson Novice MIF, Junior MIF,  
Novice FS

Arielle Trujillo Solo Willow Waltz,  
Solo Hickory Hoedown,  
Solo Ten Fox

Darien Weiss Intermediate FS

Elizabeth Westerlund Pre-Juvenile FS





## The 35th Annual Showcase For Skaters

June 7 and 8 marked the 35th Annual Showcase For Skaters. The unique competition was sanctioned by both US Figure Skating and the ISI. Judges were selected with one basic qualification - an appreciation of theatrical skating. Chairs of the event were Bonnie & Ken Taylor. Ken also served as Chief Referee, and Bonnie as Chief Accountant. Below are partial results of LAFSC skaters from the competition:

### Pre-Star 1 Dramatic

2. Paige Singer

### Pre-Star 1 Light Ent. Group A

2. Paige Singer

### Pre-Star 1 Character

2. Jackson Goodley

### Pre-Star 2 Dramatic

1. Nicole Savluk
2. Maya Golob
3. Taylor Humphrey
5. Gillian McFerren

### Pre-Star 2 Light Ent.

1. Taylor Harrison
2. Maya Golob

### Pre-Star 2/Prelim Pairs

2. Lois Betancourt/Alexia Hatun
3. Gigi Goff/Adam Kaba

### Star Dramatic

1. Gigi Goff

### Star Light Ent. Group A

1. Daela Haerle
6. Sarah Irmas
7. Camille Ng

### Star/Preliminary/Pre-Preliminary Character

1. Lois Betancourt
2. Minami Kojima
3. Harmony Corona
5. Megan Weiss
7. Adam Kaba

### Star Extemporaneous

1. Sarah Irmas
2. Maya Golob

### Pre-Preliminary Dramatic Group A

3. Gretchen Pecker
6. Lois Betancourt

### Pre-Preliminary Dramatic Group B

1. Kylie Ng
5. Briona Ventura
7. Kyra Josephson

### Pre-Preliminary Light Ent. Group B

2. Lois Betancourt
3. Kyra Josephson

### Pre-Preliminary Extemporaneous

3. Lois Betancourt

### Preliminary Dramatic

2. Rachel Wiegman
4. Alexia Hatun
5. Erin Callahan
8. Graysen Guercio

### Prelim Light Ent. Group A

2. Alexia Hatun
4. Rachel Wiegman
6. India Hinton

### Prelim Light Ent. Group B

2. Erin Callahan
5. Alea Kaye Chin
6. Graysen Guercio

### Prelim Extemporaneous

1. Alexia Hatun
2. Rachel Wiegman

### Pre-Juv Dramatic

2. Caitlinn Concepcion

### Juvenile Pairs

2. David Allen/Arin De los Reyes

### Open Juvenile Dramatic

1. Mande McFerren

### Open Juvenile Light Entertainment

1. Mande McFerren

### Intermediate Character

1. Darian Weiss

Intermediate Light Entertainment

- 2. Spencer Howe

Intermediate Extemporaneous

- 1. Shayna Rothenberg

Novice Dramatic

- 3. Savannah Matlow
- 4. Paulina Pinsky
- 5. Vanessa Balao
- 7. Olivia Ouyang

Novice Light Entertainment

- 1. Paulina Pinsky
- 2. Vanessa Balao

Novice/Junior Character

- 1. Renee Velasquez
- 2. Savannah Matlow

Novice Extemporaneous

- 1. Savannah Matlow

Junior Dramatic

- 1. Hayley SooHoo
- 4. Krystal Davis
- 7. Renee Velasquez
- 8. Justine Malick

Junior Light Entertainment

- 1. Hayley SooHoo
- 3. Krystal Davis
- 6. K. Leigh Furzer

Junior Extemporaneous

- 2. Renee Velasquez

Junior Pairs

- 1. Paulina Pinsky/Nicole Huenergardt

Senior Dramatic

- 2. Selina Amranyan
- 3. Lauryn Lesovsky

Senior Light Entertainment

- 3. Lauryn Lesovsky

Adult Dramatic

- 1. Ileana Delfaus-Benish
- 2. Wanda Gelsebach
- 3. Joan Bys
- 5. Gary Correa
- 6. Vicki Costanzo

Adult Light Entertainment

- 2. Ileana Delfaus-Benish
- 3. Joan Bys
- 4. Allison Brooker

Adult Character & Comedy

- 2. Vicki Busch
- 3. Dennis Wickline

Adult Extemporaneous

- 1. Wanda Gelsebach
- 2. Vicki Costanzo

Adult Pairs

- 1. Vivian Harvey/Mark Nolan (GFFSC)

Theater On Ice

- 1. Los Angeles Ice Theatre

Ritter Reskates

- 2. Savannah Matlow, Novice
- 3. Shayna Rothenberg, Intermediate

Babilonia Reskates

- 1. The Producers
- 2. Paulina Pinsky/Nicole Huenergardt, Junior Pairs

Easton Reskates

- 1. Ileana Delfaus-Benish, Dramatic

Funakoshi Reskates

- 3. Paulina Pinsky, Novice Light Ent.

**Complete results may be found at the LAFSC web site at: <http://www.lafsc.org>**



The LAFSC Junior Council would like to thank the following for donating items for the Showcase raffle:

LAFSC, Paul & Allison Alanis, Brigitte Alanis, Sean Bachand, Vanessa Balao, Vicki Costanzo, Joanne Funakoshi, Katie Kornfield, Jodi Levinson, Justine Malick, Sandy Matlow, Barbara Velasquez.

Thanks to the LAFSC members for helping out at the Junior Council booth at Showcase!

Brigitte Alanis, Selina Amranyan, Vanessa Balao, Elizabeth Brennan, Katelyn Brewer, Krystal Davis, Alexia Hatun, Hayley SooHoo, Rachel Trail, Rachel Wegmann. You guys rock!

**We would like to extend a warm welcome to our newest members.  
WELCOME TO LAFSC!!**

KATHLEEN A. ALBERT	NOELLE R. MUNOZ
ELLA ALES	TAYLOR OLIFIERS
ANNA BARAM	JUNE PALAZZO
SABINA CHEN	CALISTA PAPALAKOS
KARA CONNERS	JESSICA PILNER
BRIAUNA DONNELLY	BOBBY POHLCHUCK
ANNA DROZDOVA	AYDA EMMA RASHTCHI
CASSIDY EVARISTO	ROXY REVEL
AMANDA ROCHELLE GELLO	NATALI RYBACK
KAYLA GRIFFITH	NICOLE SAVLUK
GENE HOLMES	ERIN SUN
KEVIN LEAHY	TATIANA TIM
LESLIE MEISEL	CARA WILKERSON
ISABEL MENA	TIFFANY WONG
ELISE MIDDLETON	MELINDA WU



**UPCOMING COMPETITIONS:**

<b>July 11-13</b>	<b>LOS ANGELES OPEN</b>	<b>Burbank, CA</b>
July 16-20	Cactus Classic	Phoenix, AZ
July 24-26	West Coast Open	Valencia, CA
July 30-August 3	Glacier Falls Open	Anaheim, CA
August 14-17	Silver State Open	Las Vegas, NV
August 27-31	Golden West Champs	Culver City, CA
September 5-7	Rim of the World Champs	Ontario, CA
September 13-14	Pasadena Open	Pasadena, CA
October 3-7	So. West Pacific Regionals	Anaheim, CA
October 25-26	Arrowhead Open	Ontario, CA
November 11-15	Pacific Coast Sectionals	Scottsdale, AZ
December 8-13	US Jr. Figure Skating Championships	Lake Placid, NY
January 18-25	US Figure Skating Championships	Cleveland, OH
January 29-31	Midwest/Pacific Coast Sect. Syncho Champs	Broomfield, CO
February 20-22	Pacific Coast Adult Sectionals	Las Vegas, NV
March 3-7	US Synchronized Skating Championships	Portland, MA
April 21-25	US Adult Figure Skating Championships	Grand Rapids, MI

## HAPPY BIRTHDAY TO OUR MEMBERS!!

### JULY BIRTHDAYS

Vanessa Balao  
 Jamila Barranda  
 Bobby Beauchamp  
 Stephanie Bundy  
 Harland Burge  
 Frank Carroll  
 Owen Chan  
 Barbara Charnock  
 Jack Curtis  
 Charlotte Duvall  
 Cassidy Evarista  
 Kristal Fortune  
 Chelsea Giachello  
 Naomi Grabow-Strebel  
 Catherine Machado Gray  
 Lee Guttman  
 Galvani Hopson  
 Kyra Josephson  
 Zarmine Kouyoumdjian  
 Hisashi Kuchiki  
 Michelle Kwan  
 Josephine Lawless  
 Teen Liu  
 Savannah Matlow  
 Chloe Nakhjavanpour  
 Nelly Peicov  
 Dustin Perini  
 Roxy Revel  
 Sara Robertson  
 Teresa Savage  
 Jan SooHoo  
 David Sparks  
 Erin Sun  
 Hoang-Vi Vu  
 Courtney Wegener  
 Megan Weiss  
 Katherine Woods

### AUGUST BIRTHDAYS

Richard Alexander  
 Jonathan Barksdale  
 Lois Betancourt  
 Elizabeth Brennan  
 Alison Brooker  
 Si Na Choe  
 Nancy Christopher  
 Todd Eldredge  
 Jackie Ellingwood  
 Dawn Eyerly  
 Linda Fratianne  
 Maggie Fritz  
 Maya Golob  
 Jacqueline Groseclose  
 Jackie D. Grossman  
 India Hinton  
 Gene Holmes  
 Deanna Inn  
 Jullianna Kadel  
 Hayley Kidd  
 Stephen Laumann  
 Lauren Levin  
 Ayla McNeil  
 Yura Min  
 Celeste Nguyen  
 Peter Oppegard  
 Nadine Orellana  
 Alyssa Phillips  
 Krissie B. Pillow  
 Margaret Stevenson  
 Dr. Aaron Strehlow  
 Cheyenne Taylor  
 Elina Veytsman  
 Emma Weir  
 Melinda Wu



## THE HISTORY OF THE LOS ANGELES FIGURE SKATING CLUB

by: Jo Lawless, Club Historian

In recognition of the 75th Anniversary of LAFSC's founding in 1933, we look back into our archives through a series of articles to remember events from our colorful past. The passing decades have brought profound changes for LAFSC and for skating. Let's go back to the war years and 1963.

1963—We were dismayed when on May 16, the Polar Palace at Melrose and Van Ness in Hollywood burned to the ground. It had been LAFSC's home base since 1934. We should have been suspicious about the flammability of the old building because the fire department used to practice drills in the miniscule parking lot on Sunday mornings. The Polar Palace was built of wood—it had housed many movie productions which contained skating scenes. It was where Sonja Henie made her Hollywood debut in 1936 and where in the 1954 National Championships, sponsored by the Southern California Inter-Club Association, were held. Just before the fire, we had completed some of the events of our club competition. We were fortunate to be able to finish the competition at Pickwick. This year marks our forty-fifth anniversary at Pickwick.

We were also fortunate in another respect—the Team Memorial plaque, honoring LAFSC members lost in the Brussels, Belgium plane tragedy in 1961, was salvaged from the ashes, sent to a foundry to be refurbished, and today it proudly hangs at the Pickwick Ice Center.

For the first time, the BULLETIN was mailed to all LAFSC members, rather than being picked up at a session. This was an effort to

keep the club membership together after the fire. "Sometimes you don't know how much a thing means to you until it is gone." Old timers still discuss their wonderful days at the Polar Palace.

In 1963, in memory of Dona Lee Carrier, who was lost in the 1961 plane crash The Reverend and Mrs. Floyd Carrier donated the Dona Lee Carrier Memorial Trophy for Gold Medalists to the Los Angeles Figure Skating Club. It contains the name of each member to earn a gold medal in Field, Figures, Free Skating, Dance or Pairs. This trophy is permanently on display at Pickwick, a reminder to all of the achievements of our members.



### LAFSC BOARD ELECTION RESULTS IN!

The results for the 2008-9 LAFSC Board of Directors are in. The following are the results:

President: Carla Golubski

Vice President: Dawny Eyerly

Secretary: Jan SooHoo

Treasurer: Judith Campbell.

Directors: Lynn Bender, Vicki Busch, Michael Cruz, Bob Davis and Karen Dillon.

The Jr. Council also held their elections, and the results of that election are as follows: President: Krystal Davis; Vice President: Vanessa Balao; Secretary: Selina Amranyan; Treasurer: Elizabeth Brennan. Board members are: Brigitte Alanis, David Allen, Anaise Aquino, Katelyn Brewer, and Darian Weiss.



## **PASSINGS:**

### **Roy Wagelein: World Team Member—1966, 1967, 1968**

#### **Olympic Team Member –1968.**

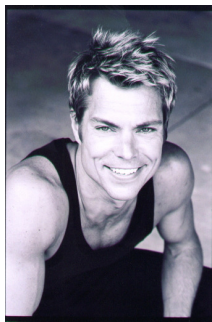
“The American Bear”, that’s what a newspaper in Hamburg, Germany called Roy Wagelein during the 1966 World Championships. It noted that he was different from most of the men skating pairs—he was “the American Bear”, who partner looked like a little toy next to his overpowering body. His partner in 1966 was Susan Berens, who represented the old Blade & Edge FSC of Pasadena. They placed second in Senior Pairs at Nationals in both 1966 and 1967, and were world team members both years. In 1968, Roy teamed with Sandi Sweitzer, placing 2nd at Nationals, eighth at Worlds, and seventh at the Olympics.



Roy began to skate at the age of twenty-two months at the old Hollywood Polar Palace. In the years that followed, he amassed an enviable record in the sport—he earned gold medals in figures, pairs, and dance, and was the first member of the Los Angeles Figure Skating Club to do so. He was also a high test figure judge and a Silver dance judge.

Following the Olympic Winter Games in 1968, Roy and Sandi married and toured with the West Company of Ice Capades for seven years. Moving to Phoenix at the completion of their show years, they began coaching and welcomed a daughter, Kristia. Roy and Sandi later divorced, but Sandi supported Roy during the years of his illness, prior to his death. He will be missed by all who knew him.

### **James Yorke: Ten Time National Competitor, Coach and Friend**



A standing room only assembly of friends, students and peers gathered together at Pickwick Ice Center on Saturday, July 5, 2008, to pay tribute to the life of longtime LAFSC coach and friend to many, James Yorke. Dubbed “Prince Charming” for his stately and empathic partnering skills with such dance luminaries as Judy Blumberg and Renee Roca, among others, Jim passed away unexpectedly at his home.

As anyone who had the pleasure of watching him take the ice can testify, Jim was a skater of consummate and effortless grace. It was a treat just to watch him move on the ice. He truly was a master of the edge. As a coach, Jim had bountiful patience, and a unquenchable excitement for teaching others the sport he loved. He derived great pleasure from seeing his students progress, and he was just as excited at teaching a basic three turn, as a complex dance pattern. It was a labor of love for Jim, and nothing pleased him more than seeing the light go off in one of his student’s eyes as he tried to teach them a new move, and his student made the breakthrough and was able to accomplish the movement.

As a competitor, Jim competed at the US Figure Skating Championships seven times, and in 1988 was an Olympic team alternate with Renee Roca. Later on that year, Jim and Renee placed third at the Skate America Championships. Following his retirement from the eligible ranks, Jim skated professionally with Judy Blumberg, and created many memorable programs with Judy. Subsequent to his professional career, Jim had devoted himself to teaching and choreography, and for the last couple of years had joined the team of coaches working with current US National Ladies Figure Skating Champion, Mirai Nagasu.

But perhaps one of Jim’s greatest qualities transcended his prodigious skating skills: his zest for life. His smile would light up the entire arena. Many of us who knew him well, looked forward to seeing that smile, and the passion and honesty behind it. Jim’s was a life well led, much too short, but his final lesson to us all was to enjoy life and to always move forward and work to achieve our goals. For that final lesson and gift he gave to all that knew him, we thank you Jim from the bottom of our hearts. You will certainly be missed, but shall never be forgotten.



The Los Angeles  
Figure Skating  
Club

PO BO 4055  
BURBANK, CA 91503-4055

**SAVE THE DATE: JULY 26, 2008**

**LAFSC GALA 75th YEAR CELEBRATION!!**

*The Los Angeles Figure Skating Clubs Newsletter is published by the Los Angeles Figure Skating Club. Letters to the Editor, articles for publication, and advertisements should be submitted to News Bulletin Editor, Josephine Lawless at 7363 Sausalito Ave., West Hills, CA 91307. Phone: (818) 347-1510. Change of address, membership and subscription inquiries should be mailed to the Membership Chair, PO Box 4055, Burbank, CA 91505. Rates: subscription \$12.00 per year. Classified ad: \$5/3line/issue. Display ad: \$5/column inch/issue (camera ready art). We make every effort to be*

### LAFSC'S 75th ANNIVERSARY COMMITTEE

Chair: Richard Dwyer

Members: Alison Brooker  
Danelle Cole  
Michael Cruz  
Dawn Eyerly  
Carla Golubski  
Josephine Lawless  
Darin Mathewson  
Paula Trujillo

