

401 Red-backed Shrike



Red-backed Shrike. Adult. Male (11-VII).

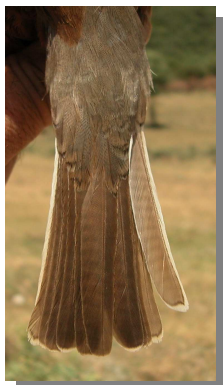
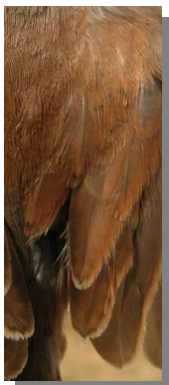
RED-BACKED SHRIKE (*Lanius collurio*)

IDENTIFICATION

17-18 cm. **Adults** with reddish/brown upperparts; **male** with grey crown and black eye-stripe; pale underparts; **female** without black on head; ochre head. **Juvenile** with reddish plumage and barred.



Red-backed Shrike. Adult. Male: pattern of head.



Red-backed Shrike. Adult. Female: pattern of scapulars and tail.



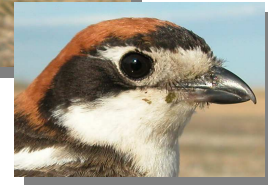
Red-backed Shrike. Juvenile: pattern of scapulars and tail.

SIMILAR SPECIES

Recalls a **Woodchat Shrike**, with grey upperparts and chestnut head. **Juveniles** of both species are quite similar, but **Woodchat Shrike** has greyer on upperparts, with white on scapulars and with the white patch on the outermost tail feather far from the tip.



Woodchat Shrike. Adult. Male.



Woodchat Shrike. Juvenile: pattern of scapulars and tail.



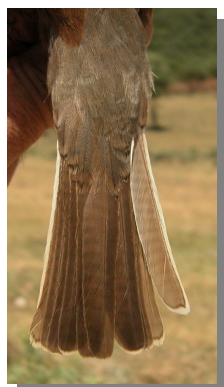
SEXING

Male with white-pinkish underparts, without bars; head with grey-ash crown and black eye-stripe; black and white tail. **Female** with pale underparts and vermiculated flanks; greyish head with grey-reddish eye-stripe; dark brown tail feathers, with the outermost feather paler and with white tip. **Juveniles** cannot be sexed. **CAUTION:** some **females** are very similar to **males**, but always have vermiculated underparts.

401 Red-backed Shrike



Woodchat Shrike. Sexing. Adult. Pattern of head: top male; bottom female.



Woodchat Shrike. Sexing. Adult. Pattern of tail: left male; right female.

AGEING

2 types of age can be recognized:

Juvenile with similar pattern to a **female**, but upperparts with feathers having a curved pale patch on the tip; wing coverts with a dark line on the tip; fresh plumage.

Adult with worn plumage in summer; upperparts with feathers lacking a curved pale patch on the tip; wing coverts without a dark line on the tip.

After the **prebreeding** moult ageing is not possible using plumage characters.



Woodchat Shrike. Ageing. Pattern of upperparts: left adult female; right juvenile.



Woodchat Shrike. Ageing. Pattern of wing coverts: top adult female; bottom juvenile.

MOULT

Partial **postbreeding** and **postjuvenile** moults, involving, before migration, body feathers and, in some birds, tertials, central pair of tail feathers and wing coverts. Both types of age have a complete **prebreeding** moult in winter quarters.

PHENOLOGY

I	II	III	IV	V	VI	VII	VIII	IX	X	XI	XII

STATUS IN ARAGON

Summer visitor, breeding in open pastures with small trees; widely distributed in Pyrenees and very located in Sistema Iberico.

401 Red-backed Shrike



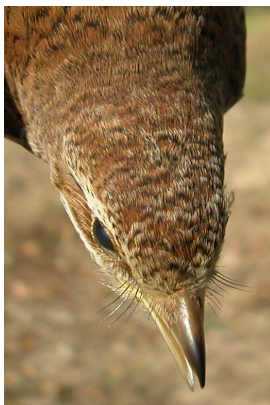
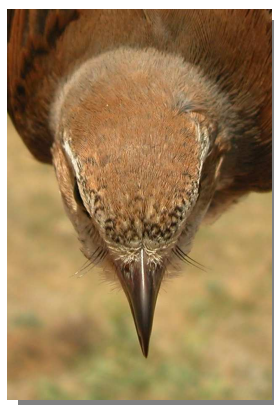
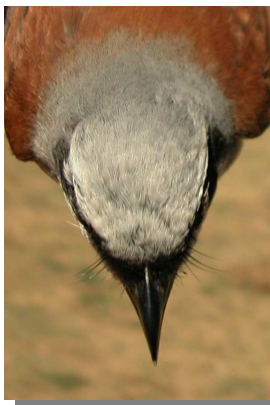
Red-backed Shrike. Adult. Female (11-V).



Red-backed Shrike. Head pattern: top male (11-VII); middle female (11-V); bottom juvenile (12-IX).



Red-backed Shrike. Juvenile (12-IX).



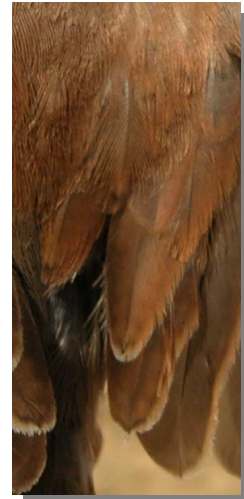
Red-backed Shrike. Crown pattern: top left male (11-VII); top right female (11-VII); left juvenile (12-IX).



Red-backed Shrike. Breast pattern: top left male (11-VII); top right female (11-V); left juvenile (12-IX).

401 Red-backed Shrike

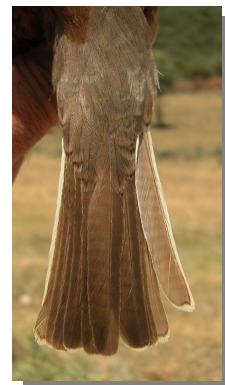
Red-backed Shrike. Pattern of flank: top male (11-VII); middle female (11-VII); bottom juvenile (12-IX).



Red-backed Shrike. Pattern of scapulars: top left male (11-VII); top right female (11-VII); left juvenile (12-IX).

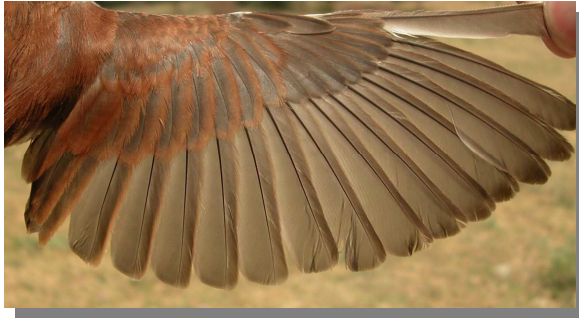


Red-backed Shrike. Upperpart pattern: top left male (11-VII); top right female (11-V); left juvenile (12-IX).



Red-backed Shrike. Tail pattern: top left male (11-VII); top right female (11-VII); left juvenile (12-IX).

401 Red-backed Shrike



Red-backed Shrike. Adult. Male: pattern of wing (11-VII).



Red-backed Shrike. Adult. Female: pattern of wing (11-V).



Red-backed Shrike. Juvenile: pattern of wing (12-IX).