

# 446 Rock Bunting



Rock Bunting. Summer. Adult. Male. (18-VI).

## ROCK BUNTING (*Emberiza cia*)

### IDENTIFICATION

14-18 cm. **Adults** with dark streaked upperparts; chestnut underparts; head grey with dark stripes along crown-side; bluish bill. **Juveniles** with grey lesser coverts.

Rock Bunting. Adult. Pattern of head and upperparts.

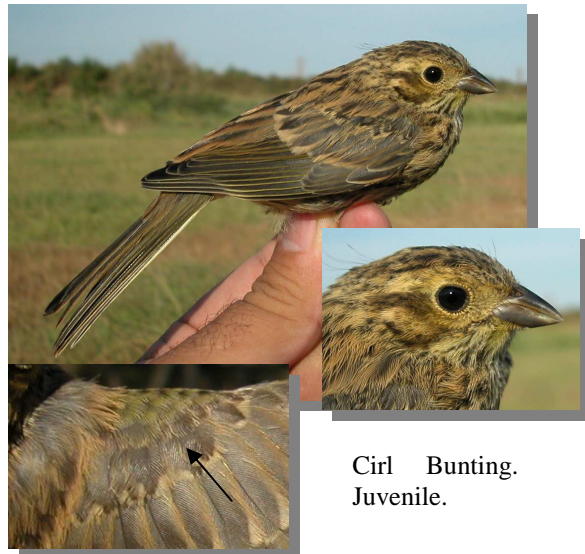


Rock Bunting. Juvenile. Pattern of head and lesser coverts.

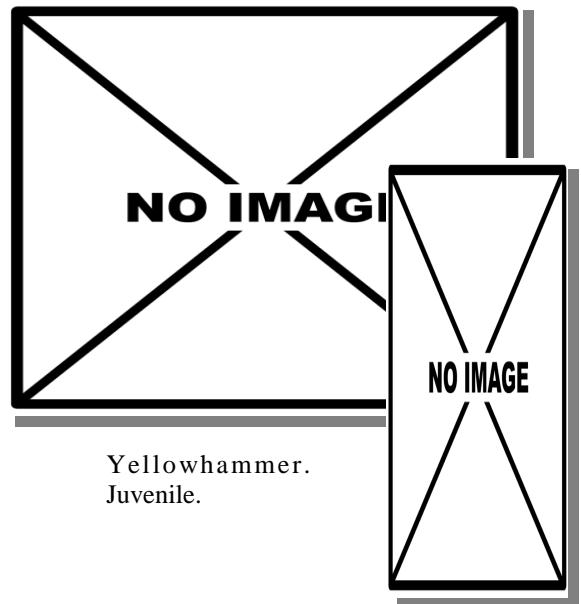


### SIMILAR SPECIES

**Adults** unmistakable by their head pattern. **Juveniles Rock Bunting** are similar to **Cirl Bunting** ones which have greenish lesser coverts; **Yellowhammer** ones have chestnut rump; **Ortolan Bunting** ones have throat and breast brown-yellowish; **Corn Bunting** is bigger (16-19 mm) and without white on the outermost tail feathers.



Cirl Bunting. Juvenile.



Yellowhammer. Juvenile.

# 446 Rock Bunting



Ortolan Bunting. Juvenile.



Rock Bunting. Winter. Sexing. Pattern of crown: left male; right female.



Corn Bunting

## AGEING

3 types of age can be recognized:

**Juvenile** grey and without **adult** head pattern; with fresh plumage.

**1st year autumn/2nd year spring** with moult limits on wing between tertials or between tertials and secondaries; tail feathers with pointed tips due to wear.

**Adult** without moult limits on wing; tail feathers with rounded tips.

## SEXING

**Male** with black stripes along crown-side; wing longer than 80 mm. **Female** with brown-blackish or brown-grey stripes along crown-side; wing shorter than 78 mm. **Juveniles** cannot be sexed using plumage characters. **CAUTION:** some **females** have well defined head pattern; some **1st year males** are similar than **adult females** so it is necessary a right ageing. Pattern of head in **autumn** is bad defined and so not always useful for sexing.



Rock Bunting. Summer. Ageing. Pattern of head: top adult female; bottom juvenile.



Rock Bunting. Summer. Sexing. Pattern of crown: left male; right female.



# 446 Rock Bunting



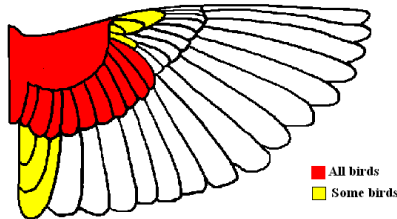
Rock Bunting. Summer. Ageing. Wear of central tail feather: left adult; right 2nd year.



Rock Bunting. Summer. Adult. Female (21-V).

## MOULT

Complete **postbreeding** moult; usually finished in October. Partial **postjuvenile** moult including body feathers, lesser, median, all greater coverts and sometimes tertials; usually finished in October.



Rock Bunting. Extent of postjuvenile moult.



Rock Bunting. Summer. 2nd year. Male (12-VI).

## PHENOLOGY

I	II	III	IV	V	VI	VII	VIII	IX	X	XI	XII

## STATUS IN ARAGON

Resident. Widely distributed throughout the Region, absent from the most deforested zones of the Ebro Basin.



Rock Bunting. Summer. 2nd year. Female (27-VI).

# 446 Rock Bunting



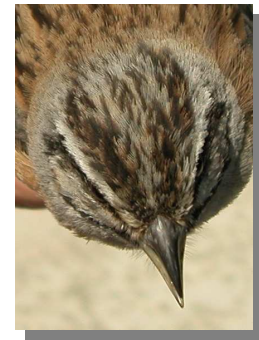
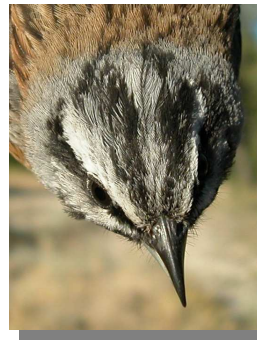
Rock Bunting. Summer. Juvenile (14-VII).



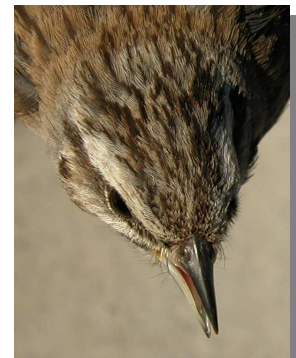
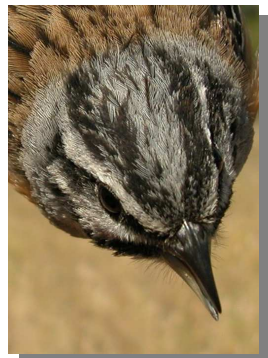
Rock Bunting. Summer. Adult. Head pattern: top male (18-VI); bottom female (21-V).



Rock Bunting. Summer. Head pattern: top 2nd year male (12-VI); middle 2nd year female (27-VI); bottom juvenile (27-VI).



Rock Bunting. Summer. Adult. Crown pattern: left male (18-VI); right female (21-V).



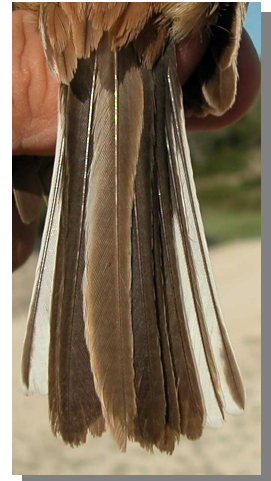
Rock Bunting. Summer. Crown pattern: top left 2nd year male (12-VI); top right 2nd year female (27-VI); left juvenile (27-VI).



# 446 Rock Bunting



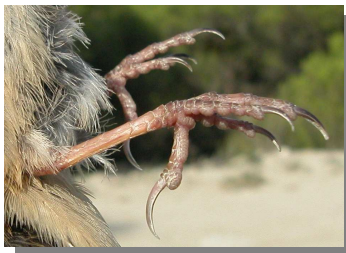
Rock Bunting. Summer. Adult. Breast pattern: left male (18-VI); right female (21-V).



Rock Bunting. Summer. Adult. Tail pattern: left male (18-VI); right female (21-V).



Rock Bunting. Summer. Breast pattern: top left 2nd year male (12-VI); top right 2nd year female (27-VI); left juvenile (27-VI).



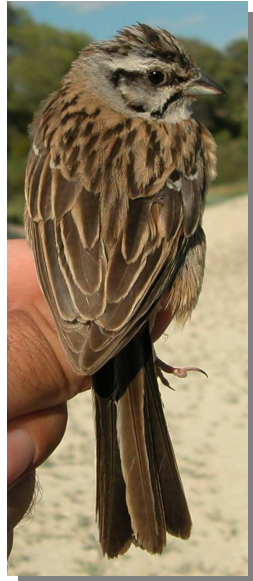
Rock Bunting. Colour of legs: top adult (02-VI); bottom juvenile (18-VII).



Rock Bunting. Summer. Tail pattern: top left 2nd year male (12-VI); top right 2nd year female (27-VI); left juvenile (27-VI).



# 446 Rock Bunting



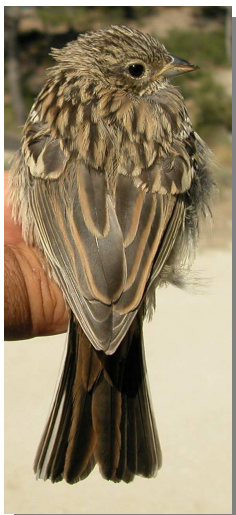
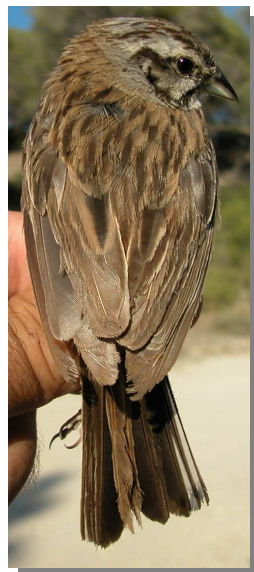
Rock Bunting. Summer. Adult. Upperpart pattern: left male (18-VI); right female (21-V).



Rock Bunting. Summer. Adult. Male: pattern of wing (18-VI).



Rock Bunting. Summer. Adult. Female: pattern of wing (21-V).



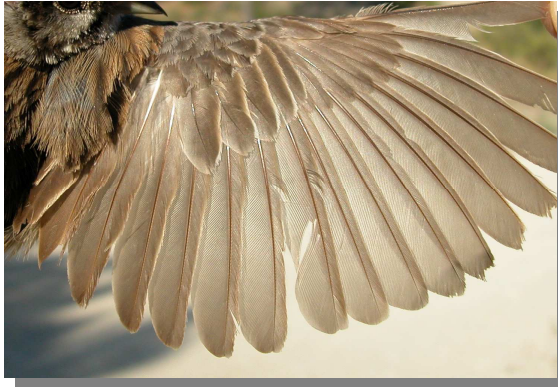
Rock Bunting. Summer. Upperpart pattern: top left 2nd year male (12-VI); top right 2nd year female (27-VI); left juvenile (27-VI).



Rock Bunting. Summer. 2nd year. Male: pattern of wing (12-VI).



# 446 Rock Bunting



Rock Bunting. Summer. 2nd year. Female: pattern of wing (27-VI).



Rock Bunting. Summer. Juvenile: pattern of wing (27-VI).



Rock Bunting. Autumn. Adult. Male (12-XI).



Rock Bunting. Autumn. Adult. Female (01-XI).



Rock Bunting. Autumn. 1st year. Male (12-X).



Rock Bunting. Autumn. 1st year. Female (12-X).



# 446 Rock Bunting



Rock Bunting. Autumn. Adult. Head pattern: top male (12-XI); bottom female (01-XI).



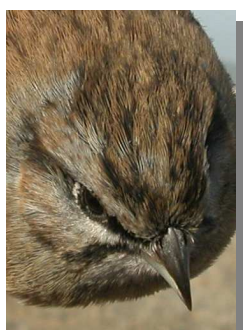
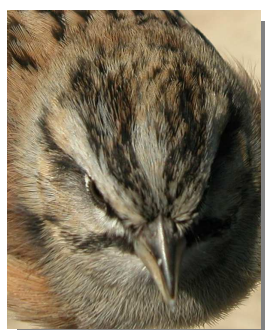
Rock Bunting. Autumn. 1st year. Crown pattern: left male (12-X); right female (12-X).



Rock Bunting. Autumn. 1st year. Head pattern: top male (12-X); bottom female (12-X).



Rock Bunting. Autumn. Adult. Breast pattern: left male (12-XI); right female (01-XI).



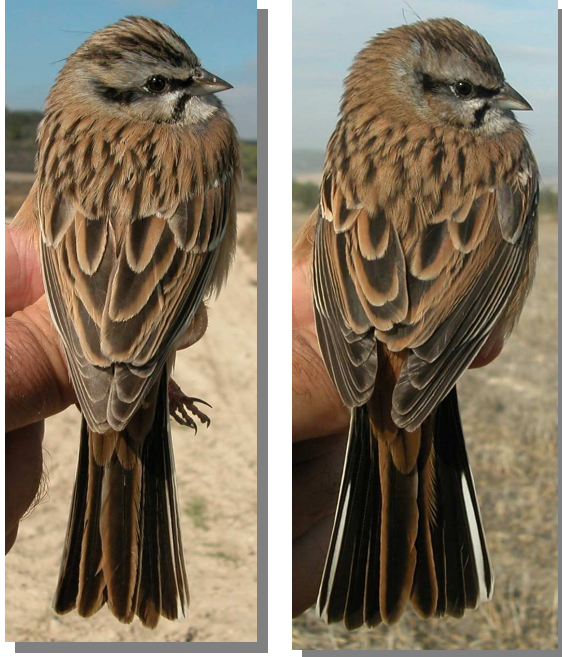
Rock Bunting. Autumn. Adult. Crown pattern: left male (12-XI); right female (01-XI).



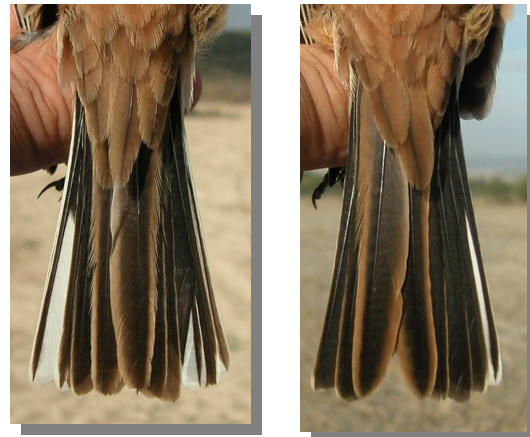
Rock Bunting. Autumn. 1st year. Breast pattern: left male (12-X); right female (12-X).



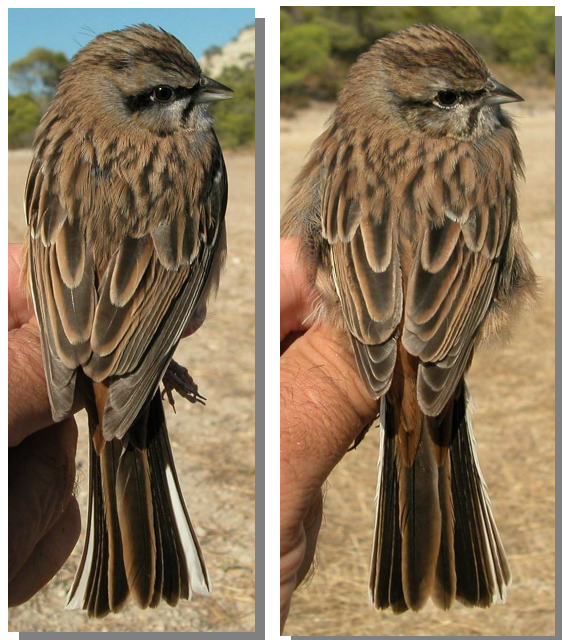
# 446 Rock Bunting



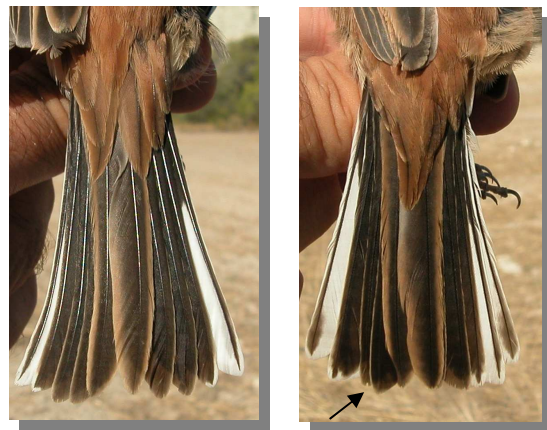
Rock Bunting. Autumn. Adult. Upperpart pattern: left male (12-XI); right female (01-XI).



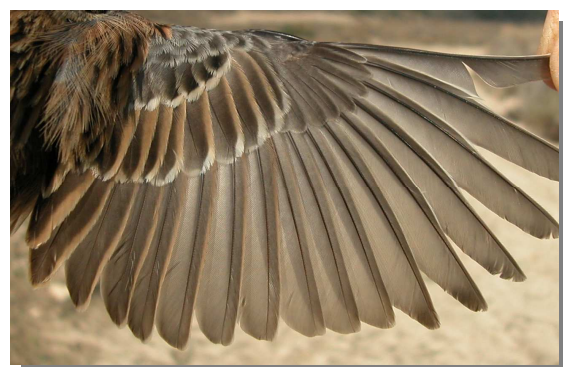
Rock Bunting. Autumn. Adult. Tail pattern: left male (12-XI); right female (01-XI).



Rock Bunting. Autumn. 1st year. Upperpart pattern: left male (12-X); right female (12-X).



Rock Bunting. Autumn. 1st year. Tail pattern: left male (12-X); right female (12-X).

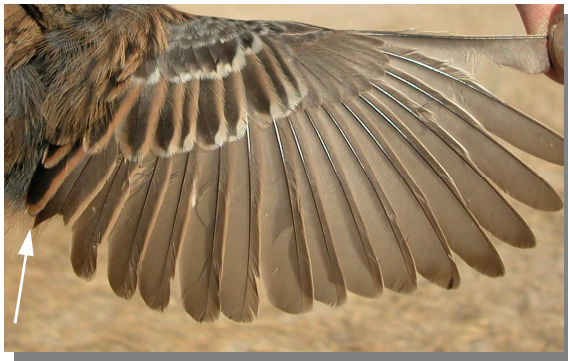


Rock Bunting. Autumn. Adult. Male: pattern of wing (12-XI).

# 446 Rock Bunting



Rock Bunting. Autumn. Adult. Female: pattern of wing (01-XI).



Rock Bunting. Autumn. 1st year. Male: pattern of wing (12-X).



Rock Bunting. Autumn. 1st year. Female: pattern of wing (12-X).