



Annual Report

HAWAII
AERONAUTICS COMMISSION

1956

Commissioners

Francis K. Sylva.....Chairman-Oahu
 Dorsey W. Edwards.....Vice Chairman-Kauai
 Ralph C. Honda.....Secretary-Oahu
 David Furtado.....Vice Secretary-Hawaii
 Richard H. Wheeler.....Member-Oahu
 Charles J. Pietsch, Jr.....Member-Oahu
 Cable A. Wirtz.....Member-Maui
 George Y. Kobayashi.....Member-Oahu
 Joseph V. Hodgson.....Member-Oahu

Executive Officers

Randolph M. Lee.....Director of Aeronautics
 John E. Batchelder.....Asst. Director of Aeronautics

Administrative Staff

Mark E. Martin.....Airport Manager-Honolulu
 Henry C. Peters.....Asst. Manager-Honolulu
 (Until May 25, 1956)
 Bo Tong Wat.....Finance Executive
 Charles W. Dahlberg.....Airport Manager-Hawaii
 William Neilson.....Airport Manager-Maui
 Coin E. Perin.....Airport Manager-Kauai

**2nd Floor
 OVERSEAS TERMINAL
 BUILDING
 HONOLULU
 INTERNATIONAL AIRPORT**



Hawaii Aeronautics Commissioners for the years 1955 and 1956. Reading from left to right: Joseph V. Hodgson, Cable A. Wirtz, Richard H. Wheeler, Charles J. Pietsch, Jr., Chairman Francis K. Sylva, Ralph C. Honda, Dorsey W. Edwards, David Furtado, and George Y. Kobayashi.

Director of Aeronautics Randolph M. Lee and Asst. Director of Aeronautics John E. Batchelder.



HAWAII AERONAUTICS COMMISSION

Annual Report

CONTENTS

Introduction

Report to the Governor page 3

Honolulu International Airport

News Headlines For The Year page 7

Facilities and Services page 9

Facts page 11

The Master Plan page 14

Proposed Terminal Buildings centerspread

Territorial Airports

Facts page 19

General Lyman Field Molokai Airport

Kamuela Airport Port Allen Airport

Kona Airport Kalaupapa Airport

Upolu Airport Lanai Airport

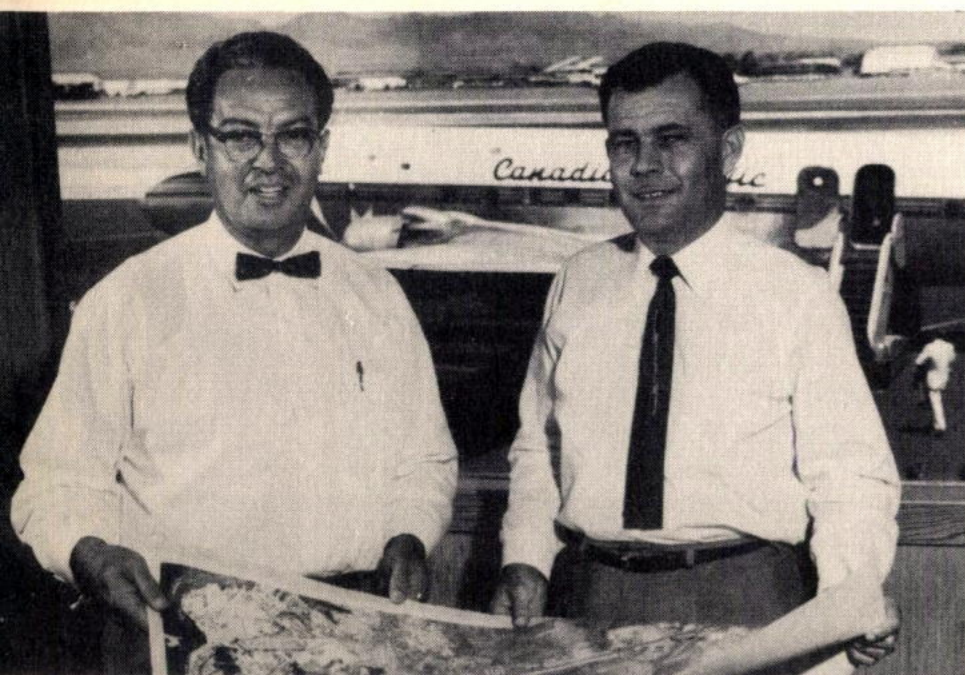
Lihue Airport Hana Airport

Kahului Airport

Inter-Island Traffic Facts page 23

Statement of Income and Expenditures

Trends



Report to the governor



*Governor Samuel King and
Chairman, Hawaii Aeronautics
Commission, Francis K. Sylva,
inspecting the site of the
new runways and terminal
building for the new jet age
Honolulu International Airport.*

S

ubmitted herewith is the report of the Hawaii Aeronautics Commission for the fiscal year ending June 30, 1956.

The Honolulu International Airport became the first civil airport in the nation to get a preview of commercial jet aircraft operation. In December 1955, the British De Havilland Comet III jet-liner arrived on a good will flight around the world; the jet aircraft remained in Honolulu for two days and gave a series of courtesy flights to ranking government officials, aviation and tourist people. It was an excellent opportunity to observe the new schedules that will be only too commonplace in 1959 and 1960. The Comet made a flight from Honolulu, Hawaii, to Vancouver, British Columbia, in 5 hours and 39 minutes, a distance of 2,738 statute miles.

The announcement by most major airlines serving Hawaii of their decision to purchase civil jet transport aircraft and to have them in operation between Hawaii and the Mainland by the middle of 1959 necessitates the expansion and improvement of the Honolulu Airport to handle this additional modern traffic. The Commission now has enough funds to undertake a major portion of the expansion and the construction of a new terminal building. With the addition of Federal participating funds, this proposed expansion has been set forth in the new master plan as approved by the Hawaii Aeronautics Commission.

The expansion of the airport also necessitates the exchange of land between the Territory and the Federal Government, plus acquisition of portions of the Damon Tract area adjacent to the airport. The land exchange program between the Territory and the Federal Government is necessary in order to acquire land now under the direct jurisdiction of the Navy, the Air Force, and the Army for the construction of new terminal buildings and the service area, also, the relocation of runways, taxiways, and aprons. Negotiations for this land exchange have been initiated between the Territory and the Federal Government and should be concluded without undue delay.

Concurrent with the decision to construct the new terminal on the mauka side of the airport, the Commission is now phasing out the airport housing and industrial area in that section. Civilian and military dependent families living in the area and in the old apartment buildings converted from military barracks were registered and referred to the Hawaii Housing Authority and military commands for relocation. Industrial enterprises were given notice to vacate their premises and help in every possible way on relocation. It is expected that the area will be completely vacated and ready for clearing in the very near future.

As the expansion of the airport and the construction of the new terminal area are geared to the new schedules of the major airlines starting their jet operation in late 1959 or early 1960, it is imperative that the master plan go forward as approved.

Actions affecting other Territorial airports were as follows:

South Cape Airport on the island of Hawaii was abandoned with the approval of the Civil Aeronautics Administration and the land was returned to the Territorial Land Commissioner.

A verbal offer, by Mr. Paul Fagan, of sufficient land to extend the Hana runway an additional 2,000 feet was accepted by the Commission.

Permission for the Territory to use Bellows Field was cancelled by the Air Force in June 1956. This was to permit the Air Force to install its new Globecom System.

The Commission, after several meetings with representatives of the Navy, Civil Aeronautics Administration, and the Attorney General's Office, accepted the proposed quitclaim deed transferring title of Kahului Airport to the Territory. Although the deed contains several provisions which are not to the Commission's liking, the deed is the best possible one that can be obtained under the law authorizing the transfer of the airport. Accordingly, the staff was instructed

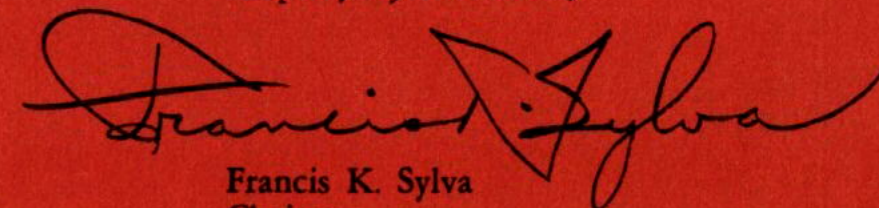
to study the proper procedure to follow in making amendments to the deed for removal of these unfavorable provisions.

Passenger traffic via air transportation has continued to increase. During the fiscal year, overseas air passenger volume increased 26 percent over last year, 322,750 to 255,421. Air passenger traffic between the islands totalled 627,625 for a gain of 6.9 percent over the preceding year.

Total expenses for the fiscal year 1956 amounted to \$1,001,078. Improvement and capital projects \$860,909 with bond redemption costs at \$57,840, plus the surcharge imposed on special funds amounting to \$70,114. In addition to the above, a sum of \$1,000,000 was transferred to the General Fund as a reimbursement to that fund for expenditures made in prior years for airport purposes.

Operating revenue from the aviation fuel tax of 3½ cents per gallon amounted to \$1,118,893. This was an increase of 35.1 percent over the preceding fiscal year; this increase is directly traceable to the increase of non-scheduled commercial air carriers hauling military personnel. Additional operating revenue in the amount of \$662,315 received for airport fees, plus \$166,528 received as Federal grants.

Respectfully submitted,



Francis K. Sylva
Chairman

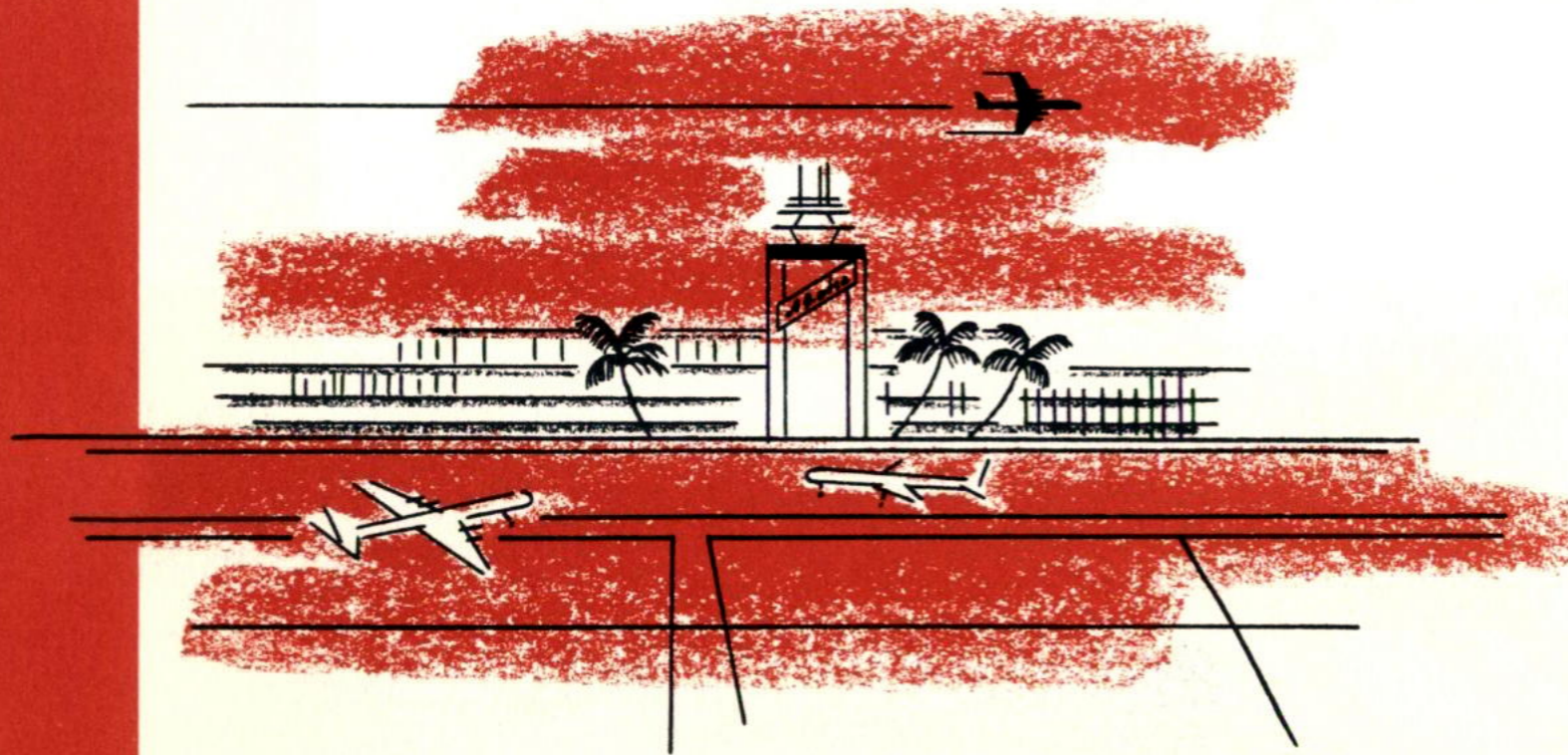


Honolulu International Airport's main runway of 13,104 feet. It is the longest commercial runway in the nation.



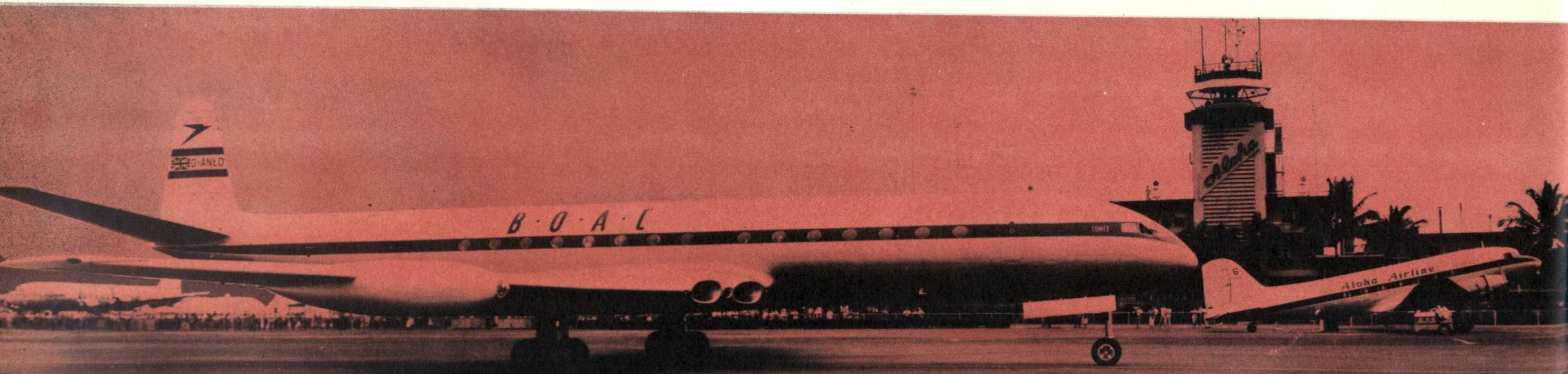
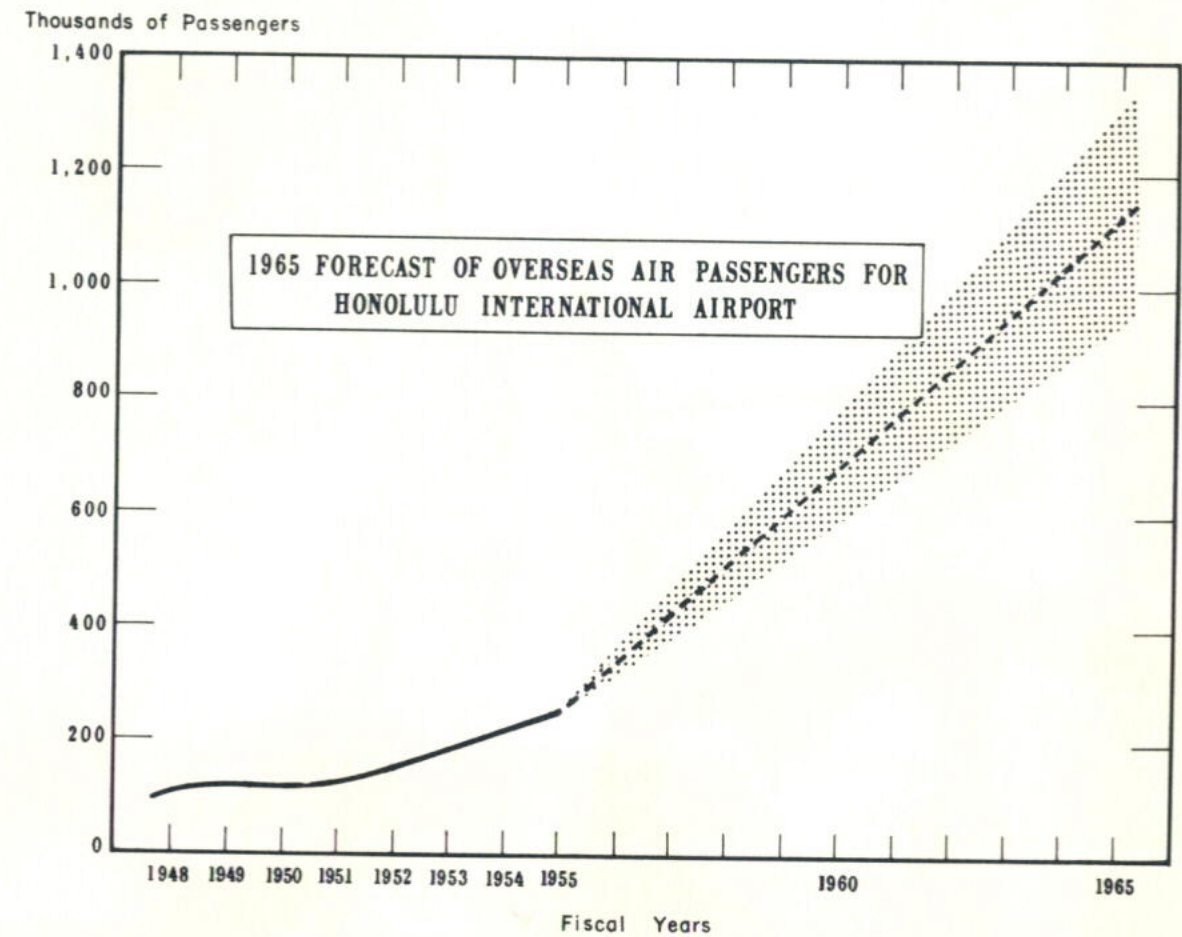
HONOLULU INTERNATIONAL AIRPORT

- News Headlines for the Year
- Facilities and Services
- Facts
- Aircraft Operations
- Comparative Air and Sea Passengers
- Overseas Air Passenger Volume
- Inter-Island Air Passenger Volume
- Summary of Passenger, Cargo, Air Mail Traffic
- HIA's Place in National Picture



News HEADLINES FOR THE YEAR

Honolulu, 13 December 1955—De Havilland Comet's only landing on American soil previewed the jet age to come with the forecasted figures of increase in traffic to 1,150,000 people by 1965. HIA must keep pace with increased facilities as reflected in the new master plan.





Richard Wheeler, chairman of Hawaii Visitors Bureau and commissioner of Hawaii Aeronautics Commission, discusses with William O. Cogswell, executive director of Hawaii Visitors Bureau, plans for the upswing in tourist business due to increasing air travel.

Dr. Francis K. Sylva, chairman of Hawaii Aeronautics Commission, greets Captain John Cunningham, chief test pilot of De Havilland Aircraft Corporation, on his arrival at Honolulu International Airport flying the world's first jet airliner, De Havilland Comet.

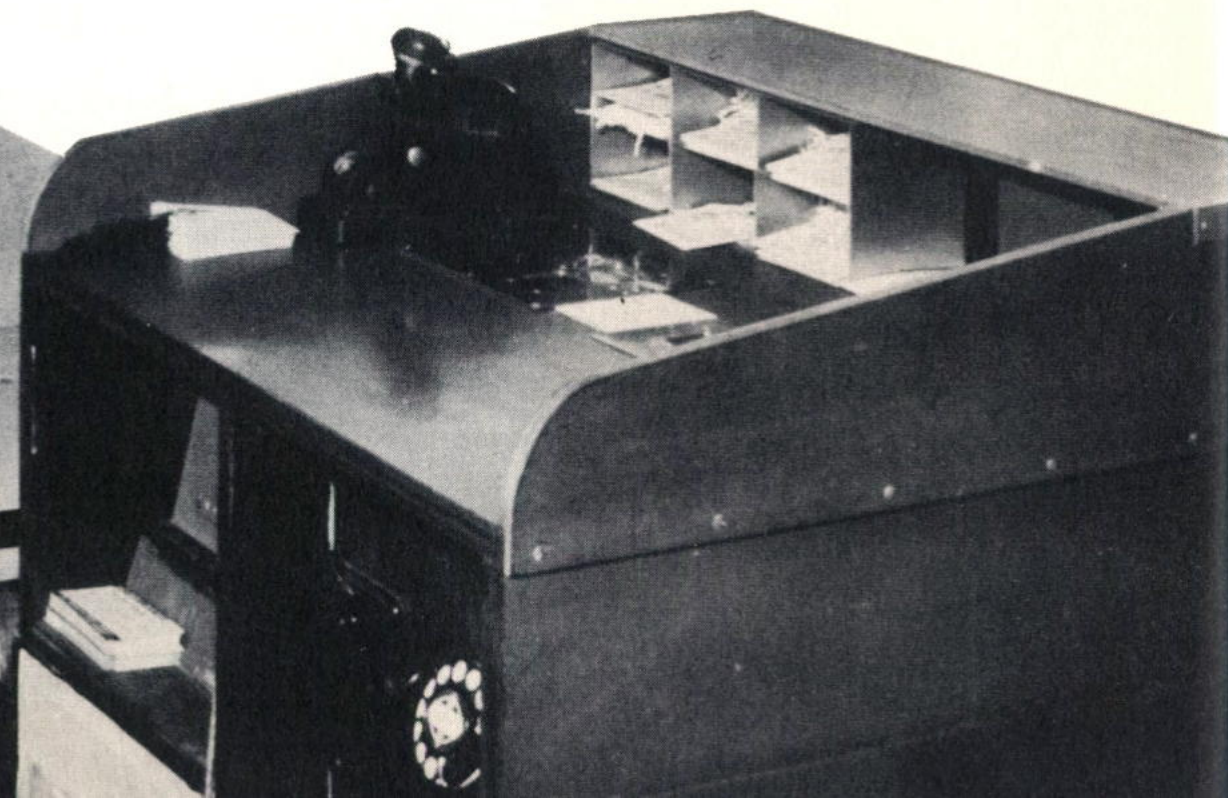
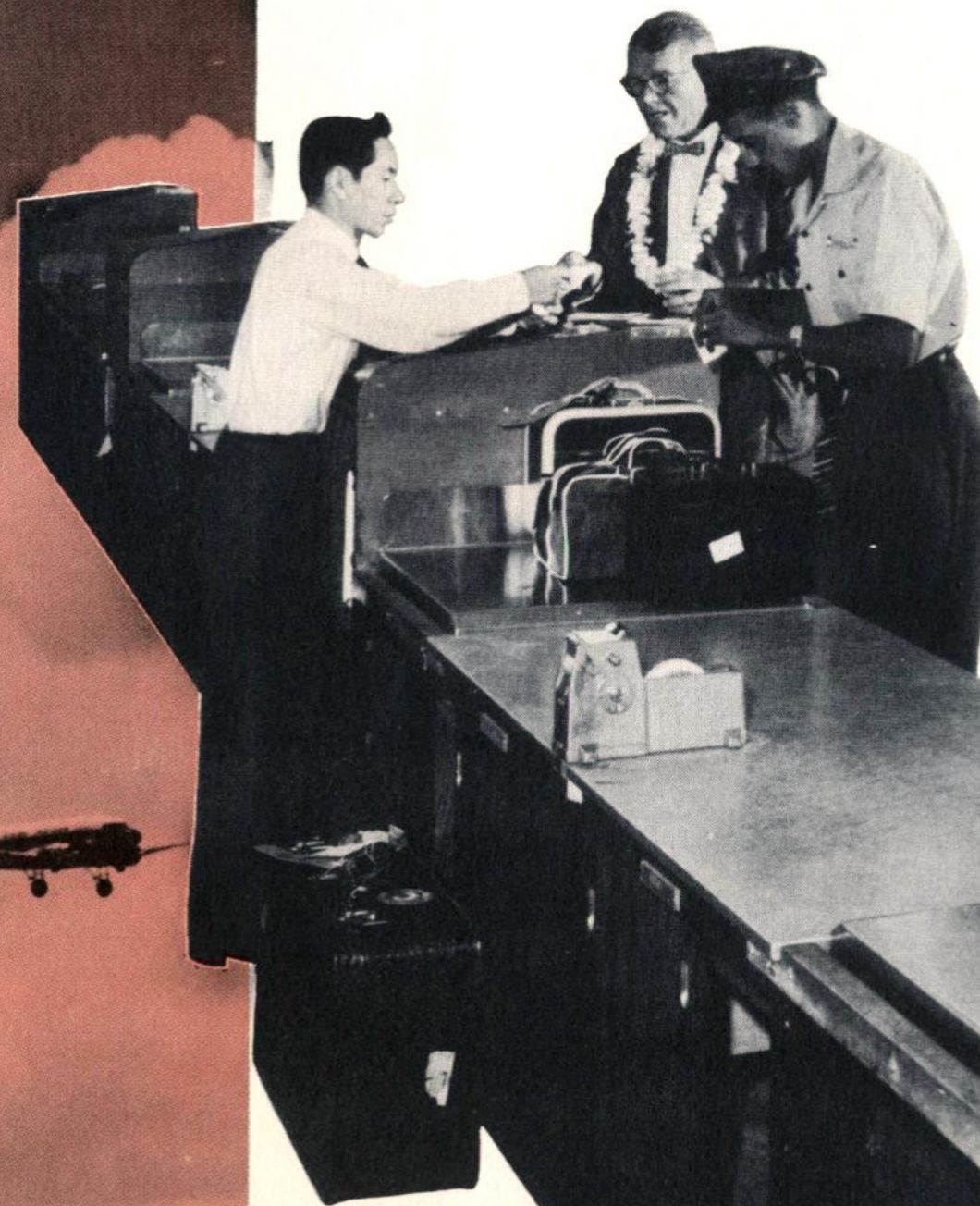


Facilities **AND SERVICES**

A program of temporary improvements was made from time to time in keeping pace with the ever-increasing air traffic. This is not only for the comfort of passengers but also for safety of aircraft.

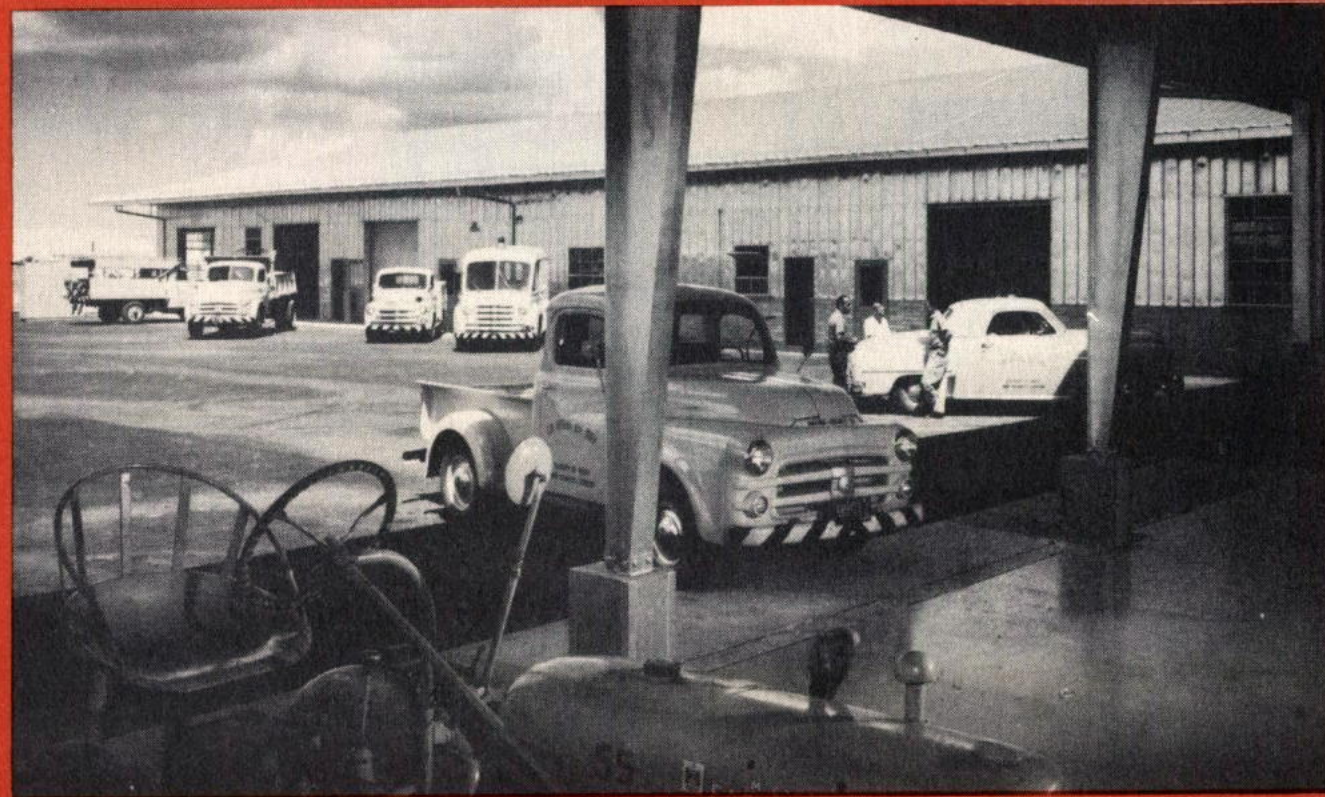
At left is CAA's ASR (Airport Surveillance Radar) transmitter. ASR gives the air traffic controller an accurate map of the control area showing the positions of aircraft within a radius of 50 miles.

Below is a new experimental check-in counter for increased convenience of departing overseas passengers, designed to combine the functions of agricultural baggage inspection and baggage weigh-in.





Main lobby of International Airport's terminal, a beehive of activity as friends and relatives bestow traditional Hawaiian hospitality to new arrivals.



Part of the fleet of service and maintenance vehicles used in servicing the airport.



De Havilland's Comet receives the traditional lei from one of Hawaii's beautiful girls.

HONOLULU INTERNATIONAL AIRPORT

LAND AREA	1260 Acres	
RUNWAYS: 4R-22L	200' x 7004'	
4L-22R	200' x 6950'	
14-32	200' x 6150'	
8-26	200' x 13,104'	
SEADROME AREA	2793 Acres	
SEALANES: 4-22	1000' x 15,312'	
14-32	1000' x 10,560'	
7-25	1000' x 15,827'	
	<i>This Year</i>	<i>Last Year</i>
Aircraft Operations	194,459	213,659
Passenger Traffic	881,814	775,441
Air Cargo—pounds	28,813,511	28,129,549
Air Mail—pounds	8,240,600	8,065,970
INITIAL LAND ACQUISITION—1927	\$	27,410
ADDITIONAL LAND PURCHASED—1943		69,660
ORIGINAL CONSTRUCTION (1927-1941)		
Territorial General Fund		143,827
Public Donations		20,000
Federal Funds		3,404,300
POST-WAR IMPROVEMENTS		
Completed Projects:		
Rehabilitation of Temporary Buildings		52,489
Rehabilitation of Runways		135,181
Auxiliary Power System		15,144
Fencing and Drainage		33,137
Improvements to Overseas Terminal Building		148,232
Extension of Runway 8-26 and Taxiway to Hickam Field Boundary		70,781
High Intensity Lighting System, Runway 8-26		151,799
Medium Intensity Lighting System, Runway 4L-22R		149,553
Acquisition and Improvements to Hangars		124,346
Lei Vendors Stands		31,710
Miscellaneous Improvements		125,424
Small-Plane Hangars and Taxiway		97,034
New Baseyard and Maintenance Building		118,000
Projects Under Construction:		
Painting of P.A.M. Hangars		45,000
Projects in the Planning Stage:		
New Terminal Facilities		12,500,000
Acquisition of Land for Terminal Facilities, Initial Requirements		300,000
Relocation of Hangar from Puunene		75,000

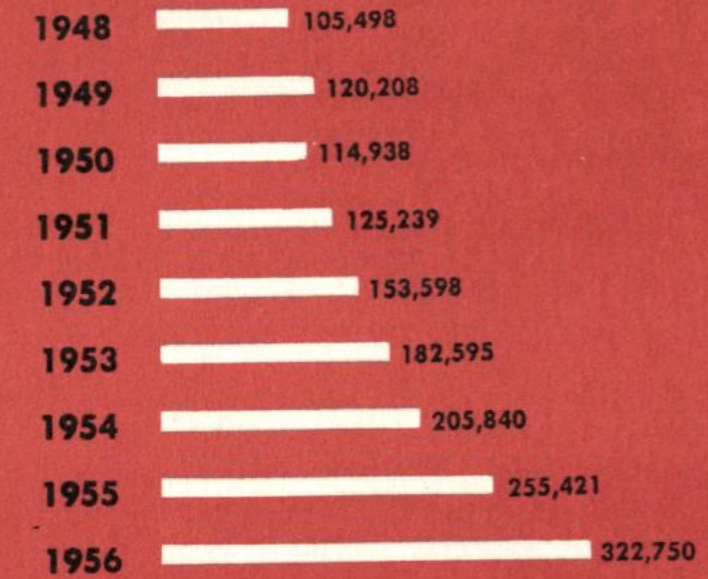
AIRCRAFT OPERATIONS

Fiscal Year July 1, 1955 to June 30, 1956

		Scheduled Carriers	Non-Scheduled Carriers	Other Civil Aircraft	Military Aircraft	Totals
1955	July	3,954	168	3,226	10,499	17,847
	August	4,090	262	2,574	10,527	17,453
	September	3,692	246	3,026	9,818	16,782
	October	3,396	292	3,177	10,374	17,239
	November	3,108	230	3,431	10,111	16,880
	December	3,388	286	3,157	9,199	16,030
1956	January	3,258	316	3,208	8,886	15,668
	February	2,800	250	3,746	7,585	14,381
	March	3,168	250	3,310	7,729	14,457
	April	3,310	408	3,794	7,660	15,172
	May	3,306	304	4,397	7,751	15,758
	June	4,086	430	4,201	8,075	16,792
TOTALS		41,556	3,442	41,247	108,214	194,459
1954-55 Fiscal Yr. Totals		38,990	1,698	39,563	133,408	213,659
Percent gain or loss from 1954-55 fiscal year		6.6	102.7	4.3	-18.9	-9.0

OVERSEAS AIR PASSENGER VOLUME

Fiscal Year Totals



Above totals represent incoming, outgoing and through passenger traffic, and does not include military charter flight passengers.

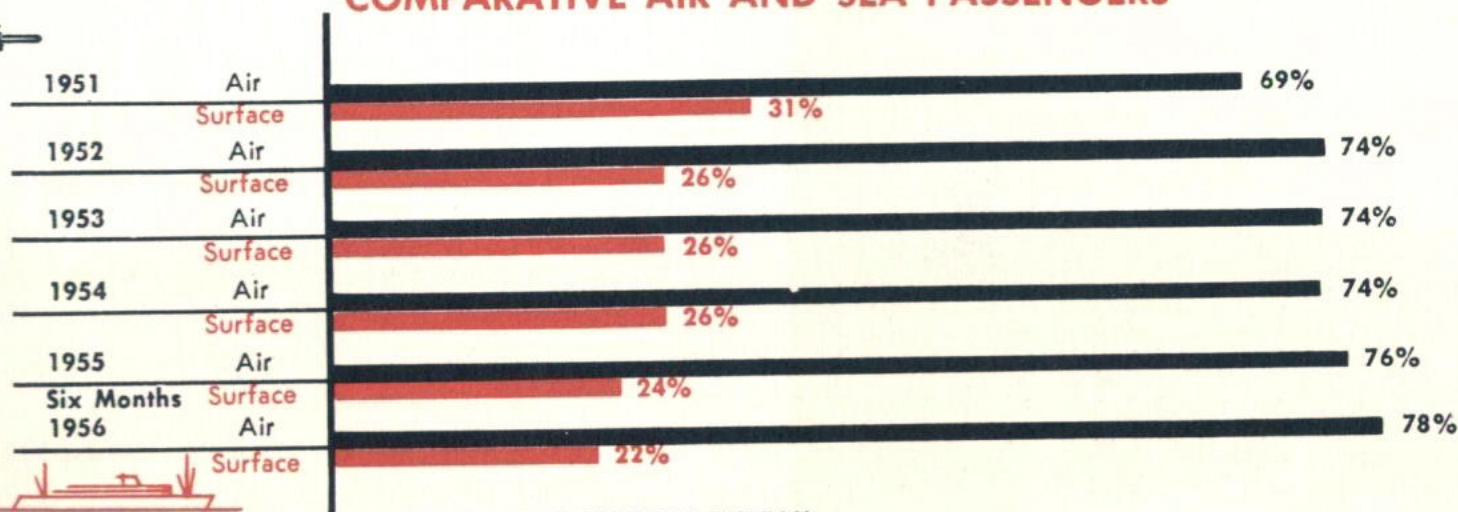
INTER-ISLAND AIR PASSENGER VOLUME

Fiscal Year Totals



Above totals represent incoming and outgoing passenger traffic.

COMPARATIVE AIR AND SEA PASSENGERS



SOURCE: HAWAII VISITORS BUREAU

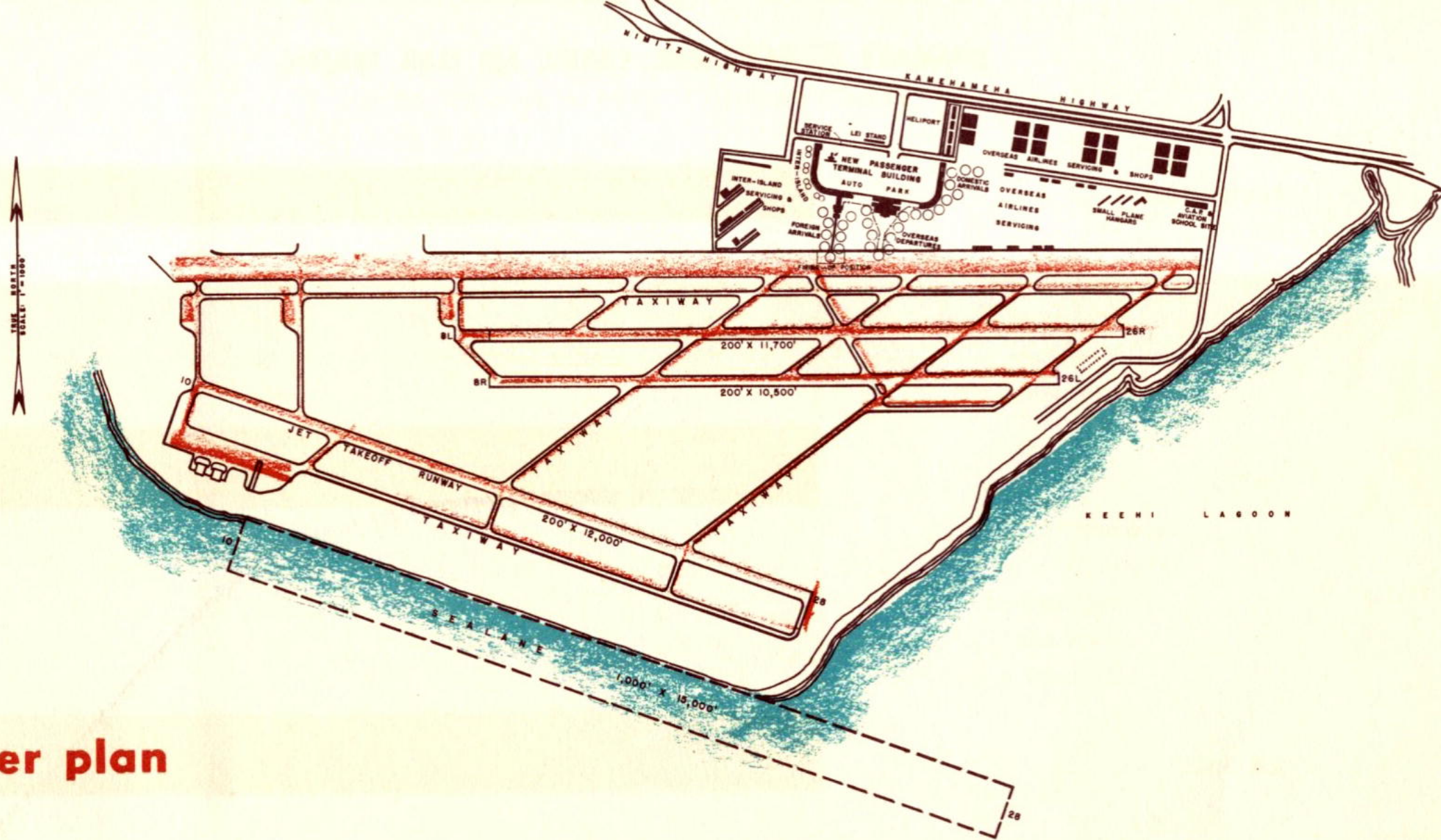
SUMMARY OF PASSENGER, CARGO, AIR MAIL TRAFFIC

Fiscal Year July 1, 1955 to June 30, 1956

PASSENGERS	OUTGOING	INCOMING	THROUGH	TOTALS
Inter-Island	277,154	281,910	-----	559,064
Overseas	129,588	128,180	64,982	322,750
TOTAL REVENUE	406,742	410,090	64,982	881,814
1954-55 Totals	362,488	361,203	51,750	775,441
Percent gain or loss	12.2	13.5	25.6	13.7
CARGO	OUTGOING Pounds	INCOMING Pounds	THROUGH Pounds	TOTALS Pounds
Inter-Island	13,201,447	8,292,747	-----	21,494,194
Overseas	1,121,694	1,531,731	4,665,892	7,319,317
TOTAL REVENUE	14,323,141	9,824,478	4,665,892	28,813,511
1954-55 Totals	14,982,035	9,969,318	3,178,196	28,129,549
Percent gain or loss	- 4.4	- 1.5	46.8	2.4
AIR MAIL	OUTGOING Pounds	INCOMING Pounds	THROUGH Pounds	TOTALS Pounds
Inter-Island	366,025	418,356	-----	784,381
Overseas	1,696,869	1,880,645	3,878,705	7,456,219
TOTAL REVENUE	2,062,894	2,299,001	3,878,705	8,240,600
1954-55 Totals	1,948,293	1,974,807	4,142,870	8,065,970
Percent gain or loss	5.9	16.4	- 6.4	2.2

During the fiscal year 1956, there were 194,459 aircraft operations at Honolulu International Airport. With respect

to all United States airports, this volume resulted in Honolulu being ranked nineteenth in total operations.



the master plan

AGREEMENT FOR MUTUAL TRANSFER OF REAL ESTATE

It is mutually agreed between the undersigned that the land areas comprising Hickam Air Force Base, Honolulu International Airport, Honolulu Naval Air Station Facility, and Fort Kamehameha should be developed for future use as a single airfield complex.

It is further agreed that, in order to develop such a single airfield complex, it is necessary for the parties to this agreement to mutually transfer certain parcels of real estate in fee simple.

It is also agreed that the mutual transfer of this real estate will give consideration to the real estate requirement of all interested and/or participating agencies. These agencies are:

- a. USAF, represented by COMPACAF.
- b. USN, represented by COMFOURTEEN.
- c. US Army, represented by CGUSARPAC
- d. Territory of Hawaii, represented by the Chairman, HAC.
- e. CAA, represented by the Regional Administrator, 6th Region, CAA.

The USAF has proposed a master plan for the development of a joint airfield runway and supporting pavement system which is acceptable to the other interested agencies. The proposed airfield runway and supporting pavement system is not intended to restrict individual internal developments within the land areas controlled or to be controlled by the various agencies, but it is agreed that individual development plans will conform to applicable USAF, Navy and CAA airfield zoning and clearance criteria. This proposed Master Plan development is delineated in the map attached as Appendix A to this agreement.

Initial implementation of this agreement will be undertaken by a Joint Real Estate Transfer Committee. This committee will be formed immediately and will be composed of one representative from each of the participating agencies.

The Joint Real Estate Transfer Committee will determine the real estate actions required to carry out this agreement, and the undersigned agree to take action necessary to implement the Committee's determinations.

Any of the represented agencies shall have the right to request a meeting of the Joint Real Estate Transfer Committee. Upon completion of the required real estate action, this Committee will be dissolved.

Other agreements for the joint usage of operational facilities will be resolved between the agencies concerned.

This agreement confirms prior mutual understandings and will be effective when signed by all parties.

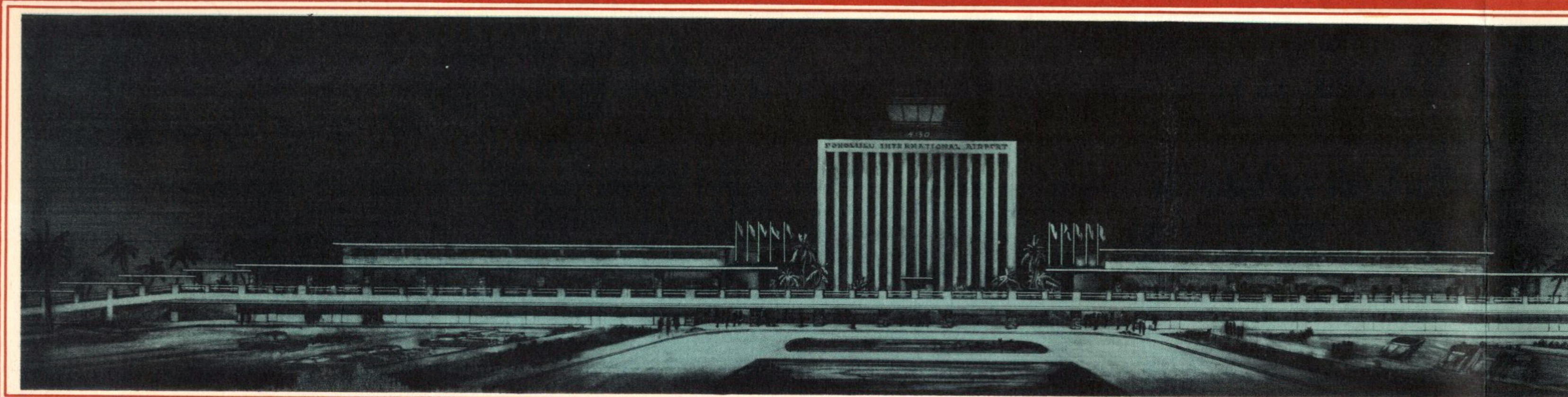
Bruce C. Clarke
 BRUCE C. CLARKE
 Lieutenant General, USA
 Commanding General, USARPAC

Sory Smith
 SORY SMITH
 Major General, USAF
 Commander, PACAF

C. E. Olsen
 C. E. OLSEN
 Rear Admiral, USN
 Commandant, 14ND

Francis K. Sylva
 FRANCIS K. SYLVA
 Chairman
 Hawaii Aeronautics Commission

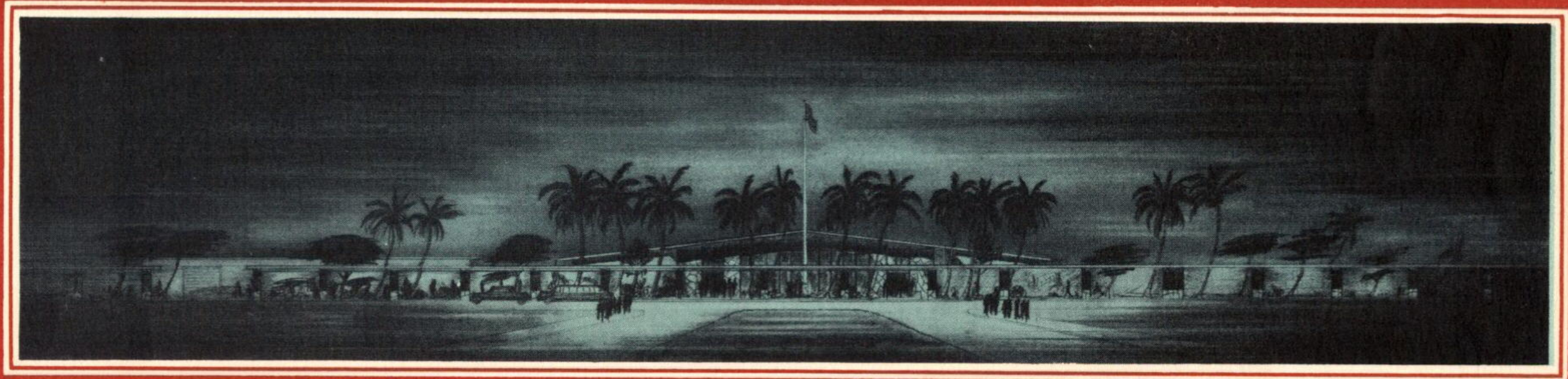
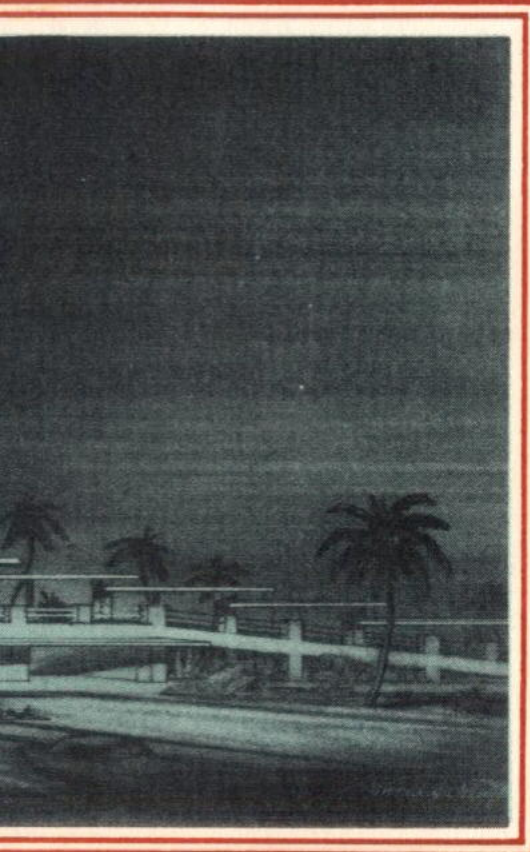
Edgar N. Smith
 EDGAR N. SMITH
 Regional Administrator
 6th Region, CAA



OFFICE BUILDING & THE OVER-SEAS DEPARTURE SECTION

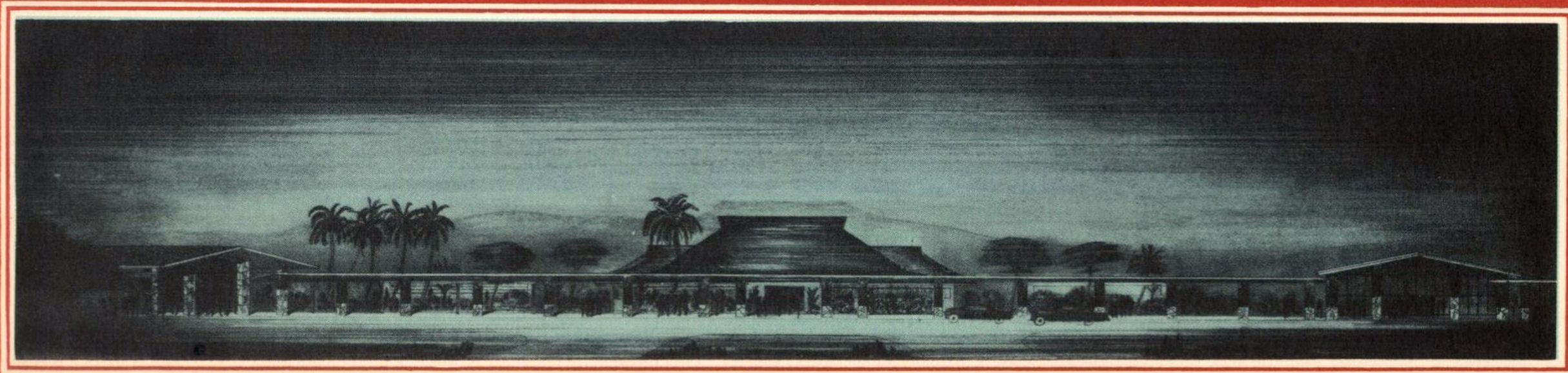


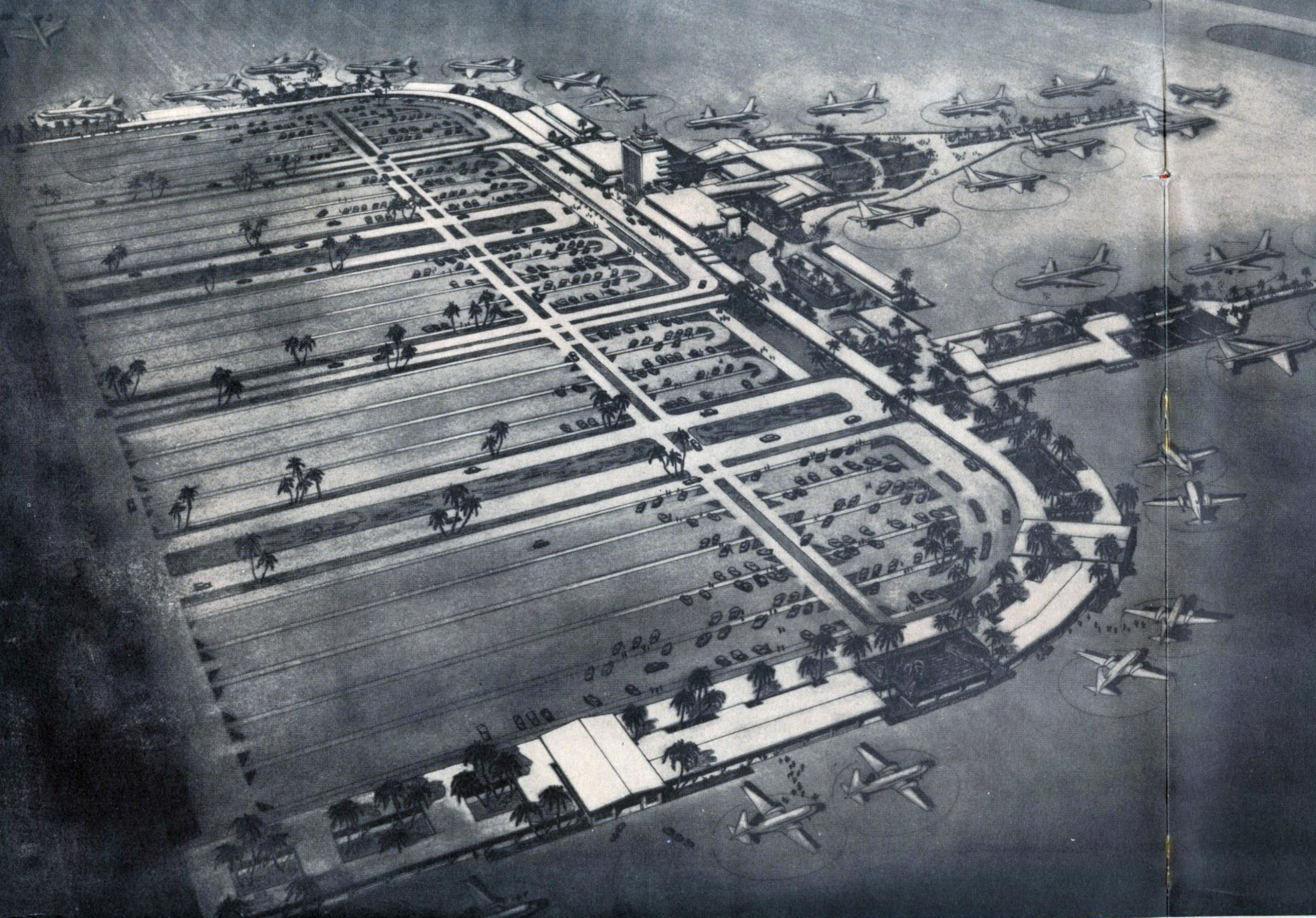
DOMESTIC OVER-SEAS ARRIVAL LOBBY



FOREIGN ARRIVALS SECTION

INTER-ISLAND SECTION







Hilo control tower with its setting of beautiful, lush tropical gardens.



TERRITORIAL AIRPORTS

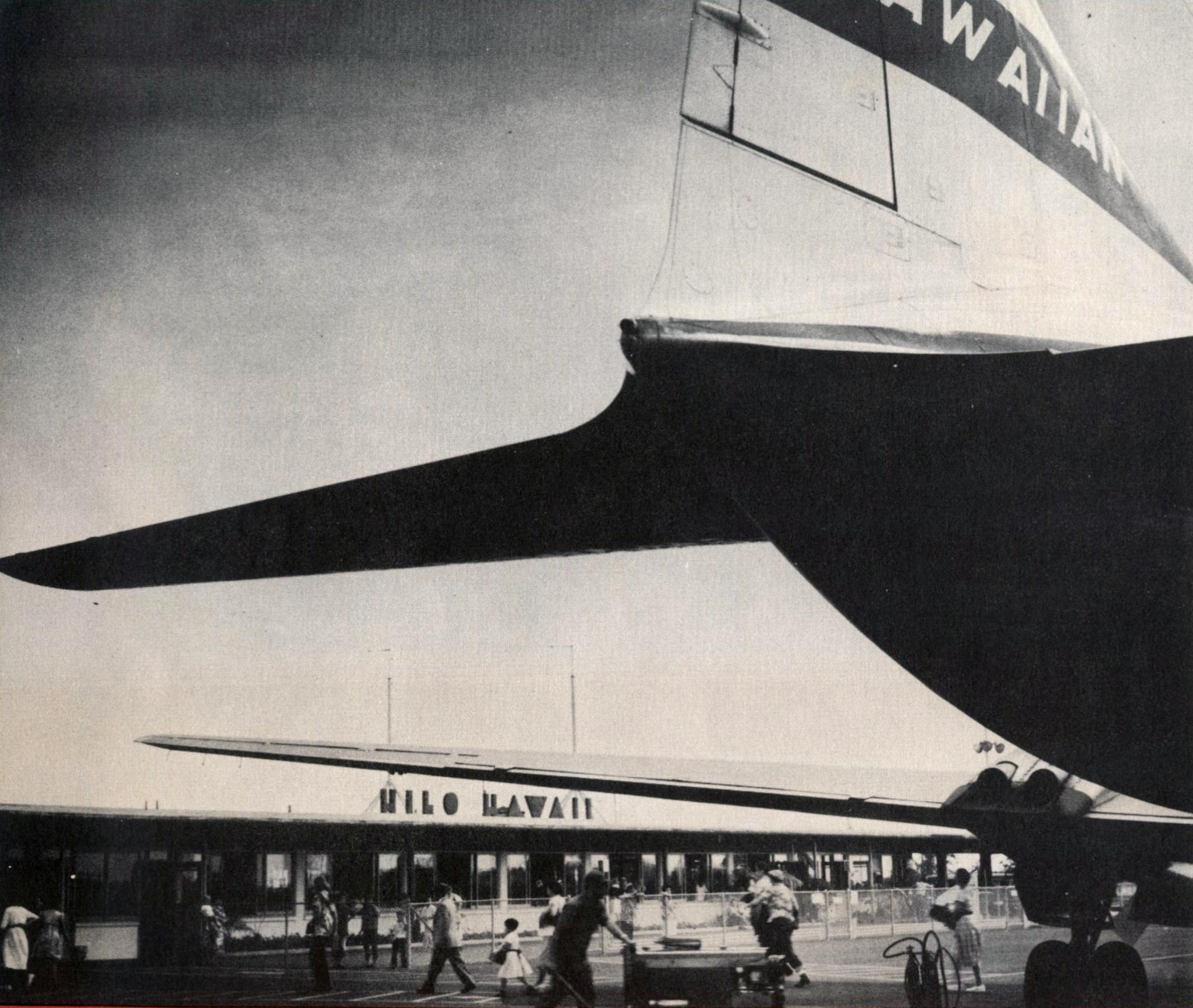
- **FACTS**

General Lyman Field	Molokai Airport
Kamuela Airport	Port Allen Airport
Kona Airport	Kalaupapa Airport
Upolu Airport	Lanai Airport
Lihue Airport	Hana Airport
	Kahului Airport

- **SUMMARY OF INTER-ISLAND REVENUE
PASSENGER, CARGO, AIR MAIL TRAFFIC
SUMMARY FOR YEAR AND BY MONTHS**

- **NEW LOOK FOR THE NEIGHBOR
ISLANDS**





Passenger loading area, General Lyman Field

GENERAL LYMAN FIELD

LAND AREA 650 Acres

RUNWAYS:

3-21 150' x 5600'
8-26 200' x 6500'

	<i>This Year</i>	<i>Last Year</i>
Aircraft Operations	34,308	46,667
Passenger Traffic	188,885	177,834
Air Cargo—pounds	7,042,636	7,696,960
Air Mail—pounds	387,263	357,217

INITIAL LAND ACQUISITION Territorial Land ORIGINAL CONSTRUCTION (1928-1941)

Territorial General Fund	\$125,243
Federal W.P.A. Funds	34,148
C.A.A. National Defense Funds	314,000

POST-WAR IMPROVEMENTS

Completed Projects:

Rehabilitation of Roads, Runways and Fencing	56,782
New Terminal and Administration Building	381,856
Aircraft Parking Aprons, Access Roads, Ramps and Auto Park	293,244
Grading, Filling and Landscaping	31,067
Freight Terminal Building	110,957
"Private" Small-Plane Hangars	38,592
High Intensity Lighting System, Runway 8-26	182,070
Reconstruction of Runway, Taxiway, Drainage and Medium Intensity Lighting for Runway 3-21	508,000
Miscellaneous Projects	63,493

Projects Under Construction:

Pavilion for Military Traffic	3,900
-------------------------------------	-------

Projects in the Planning Stage:

Taxiway to Runway 8-26 and Rehabilitation of Pavement	100,000
Acquisition of Land for Extension to Runway 8-26 and Clearing Site	25,000
Clearing Approach Zone Hazards	1,325

KAMUELA AIRPORT

LAND AREA 91 Acres
 RUNWAY 4-22 100' x 5200'

	<i>This Year</i>	<i>Last Year</i>
Passenger Traffic	8,592	7,676
Air Cargo—pounds	2,330,377	1,800,389
Air Mail—pounds	3,177	2,498

INITIAL LAND ACQUISITION—

Territorial Land and by Purchase	\$ 7,000
ADDITIONAL LAND PURCHASED	10
ORIGINAL CONSTRUCTION—1951	

Completed Projects:

Construction of New Airstrip Including Paved Runway, Access Road and Fencing	839,301
Passenger and Freight Terminal Building	102,813
Medium Intensity Lighting System, Runway 4-22	63,890
Miscellaneous Projects	3,459

KONA AIRPORT

LAND AREA 120 Acres
 RUNWAY 11-29 100' x 3800'

	<i>This Year</i>	<i>Last Year</i>
Passenger Traffic	59,186	51,237
Air Cargo—pounds	1,528,732	1,446,210
Air Mail—pounds	29,220	24,336

INITIAL LAND ACQUISITION	\$ 11,860
ADDITIONAL LAND PURCHASED	8,601
ORIGINAL CONSTRUCTION—1949	

Completed Projects:

Construction of New Airstrip Including Paved Runway, Access Road and Fencing	309,150
Additional Taxiway, Parking Aprons and other Paved Areas	166,411
Water System	12,000
Passenger Terminal Building	33,529
Freight Terminal Building	20,137
"Private" Small-Plane Hangars	26,243

Projects in the Planning Stage:

Relocation of Baggage Claim Counter	1,000
---	-------

UPOLU AIRPORT

LAND AREA 95 Acres
 RUNWAY 7-25 150' x 4000'

	<i>This Year</i>	<i>Last Year</i>
Passenger Traffic	6,846	8,272
Air Cargo—pounds	434,918	531,760
Air Mail—pounds	2,937	5,987

INITIAL LAND ACQUISITION	Territorial Land
ORIGINAL CONSTRUCTION (1928-1941)	

Territorial General Funds	\$ 38,619
W.P.A. Funds	75,057
C.A.A. National Defense Funds	210,000

POST-WAR IMPROVEMENTS

Completed Projects:	
Passenger Terminal	27,433
Repaving and Resurfacing of Runway and Aircraft Parking Apron	54,581



LIHUE AIRPORT

LAND AREA 153 Acres
 RUNWAY 3-21 100' x 5100'

	<i>This Year</i>	<i>Last Year</i>
Aircraft Operations	10,798	13,548
Passenger Traffic	169,461	153,542
Air Cargo—pounds	3,531,815	4,146,238
Air Mail—pounds	124,347	119,694

INITIAL LAND ACQUISITION \$100,017
 ADDITIONAL LAND PURCHASED 6,382
 ORIGINAL CONSTRUCTION—1948

Completed Projects:

Construction of Airstrip and Paved Runway	426,233
Additional Taxiways and Parking Aprons	252,621
Extension of Runway to 5,100 feet	183,420
Water System	55,564
Passenger Terminal Building	97,223
Alteration and Extension to Passenger Terminal	110,122
Freight Terminal Building	23,662
T-Hangars	15,767
Medium Intensity Runway Lighting System	68,059
Landscaping	2,541
Miscellaneous Projects	17,620
New Covered Walkways and Baggage Claim Counter	47,049

Projects in the Planning Stage:

Alterations to Passenger Terminal and Additional Auto Park Areas	100,000
---	---------

PORT ALLEN AIRPORT

LAND AREA 180 Acres
 RUNWAYS: 9-27 60' x 2500'
 5-23 100' x 2600'
 Private Flying Activity

INITIAL LAND ACQUISITION Territorial Land
 ORIGINAL CONSTRUCTION (1927-1941)
 Various W.P.A. Projects \$127,100

POST-WAR IMPROVEMENTS

Completed Projects:
 Rehabilitation of Runways and Construction of
 Waiting Room 33,457

KALAUPAPA AIRPORT

LAND AREA 17 Acres
 STRIP 5-23 100' x 2650'
This Year Last Year

Passenger Traffic	2,425	2,267
Air Cargo—pounds	476,442	479,348
Air Mail—pounds	38,273	34,734

INITIAL LAND ACQUISITION Territorial Land
 ORIGINAL CONSTRUCTION Territory

POST-WAR DEVELOPMENT

Completed Projects:
 Paving Runway and Aircraft Apron \$ 65,162
 Passenger Terminal Building 4,772

Projects Under Construction:
 Renovation to Passenger Terminal 4,500
 New Equipment Building 2,200

MOLOKAI AIRPORT

LAND AREA 304 Acres

RUNWAYS:
 5-23 100' x 4500'
 17-35 100' x 3100'

	<i>This Year</i>	<i>Last Year</i>
Passenger Traffic	45,781	45,936
Air Cargo—pounds	1,088,266	1,091,516
Air Mail—pounds	23,981	44,367

INITIAL LAND ACQUISITION Territorial Land
 ORIGINAL CONSTRUCTION (1927-1941)

Territorial General Funds \$ 70,659
 Federal W.P.A. Funds 102,221

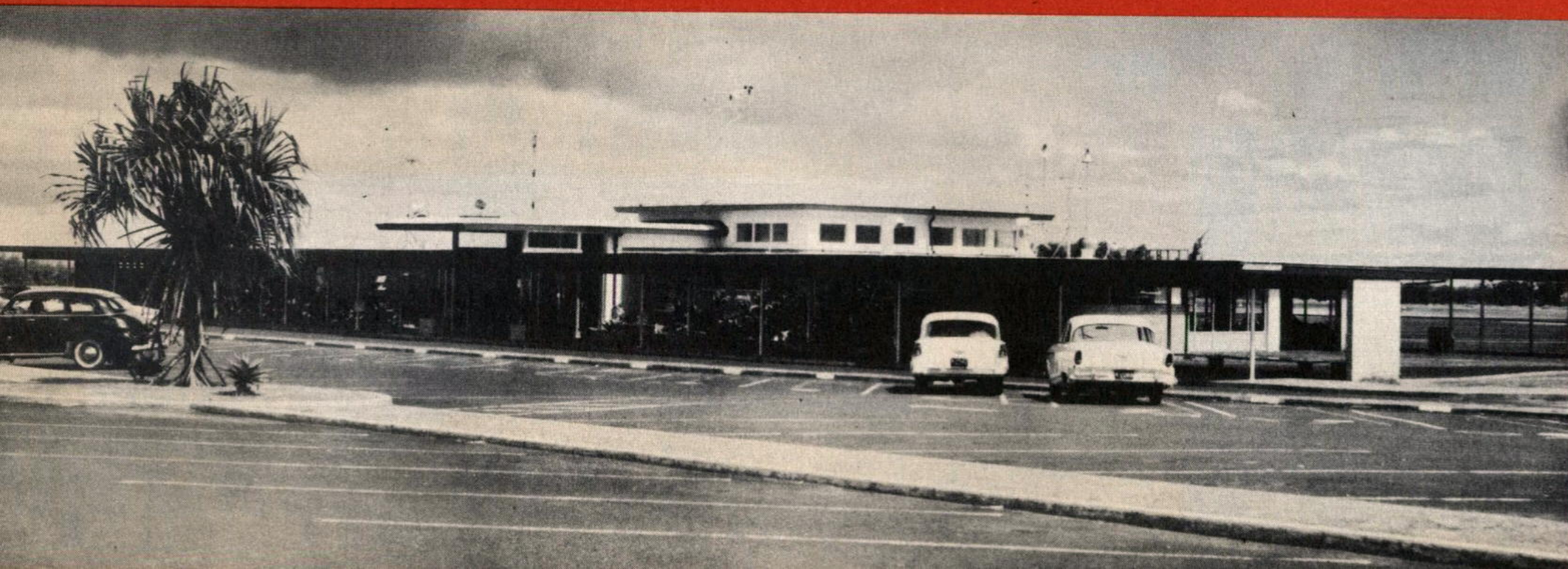
POST-WAR IMPROVEMENTS

Completed Projects:

Installation of Hazard Beacons and Obstruction Lights.....	11,196
Runway Drainage System	29,460
Resurfacing Runways and Taxiways	26,309
Miscellaneous Projects	14,319
Medium Intensity Runway Lighting System	65,000

Projects in the Planning Stage:

Passenger and Freight Terminal Building	110,000
Aircraft Apron, Drainage and Auto Park	90,000



Lihue terminal with recent alterations and additions.

LANAI AIRPORT

LAND AREA 59 Acres

RUNWAY
3-21 80' x 3700'

	<i>This Year</i>	<i>Last Year</i>
Passenger Traffic	18,606	17,599
Air Cargo—pounds	1,410,818	1,492,720
Air Mail—pounds	12,332	11,924

INITIAL LAND ACQUISITION Private Donation
ORIGINAL CONSTRUCTION—1946

Completed Projects:

Initial Construction of Airstrip by DPW in 1946	\$ 48,556
Paving of Runway and Construction of Taxiway and Apron	271,950
Construction of Runway Strip	28,419
Freight Terminal Building	13,909
Water Line	1,827

Projects Under Construction:

Addition to Freight Building	1,800
------------------------------------	-------

HANA AIRPORT

LAND AREA 125 Acres

RUNWAY
8-26 100' x 3600'

	<i>This Year</i>	<i>Last Year</i>
Passenger Traffic	8,356	8,446
Air Cargo—pounds	471,440	207,719
Air Mail—pounds	5,741	5,548

INITIAL LAND ACQUISITION Territorial Lands and Private Donation

ORIGINAL CONSTRUCTION—1950

Completed Projects:

Construction of New Airstrip	\$242,718
Paving of Runways and Aprons	176,442
Passenger Terminal and Freight Buildings	21,730
Miscellaneous Projects	1,300

Projects Under Construction:

Renovation of Terminal Building	7,335
Grading of Overrun Area	3,500

Projects in the Planning Stage:

Water Supply System	2,000
---------------------------	-------

KAHULUI AIRPORT

LAND AREA 1341 Acres

RUNWAYS:
2-20 200' x 7000'
5-23 300' x 5000'
17-35 200' x 5000'

	<i>This Year</i>	<i>Last Year</i>
Aircraft Operations	31,602	28,622
Passenger Traffic	188,048	181,203
Air Cargo—pounds	5,924,072	6,716,789
Air Mail—pounds	163,804	158,915

INITIAL LAND ACQUISITION U.S. Navy
ORIGINAL CONSTRUCTION U.S. Navy

POST-WAR IMPROVEMENTS

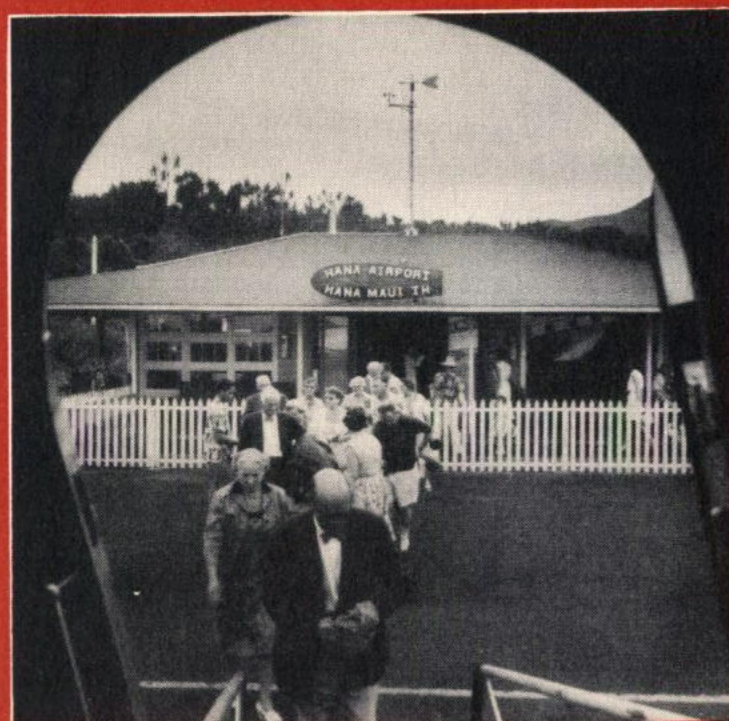
Temporary Passenger Terminal Building and Facilities....	\$ 93,421
Temporary Freight Terminal Buildings and Facilities.....	22,244
Temporary Control Tower	12,100
Private Plane Hangars	7,050
Landscaping	6,477
Miscellaneous Projects	25,930

Projects Under Construction:

Renovation of Passenger Terminal Building	10,000
Fire Equipment Building	1,500

Projects Under Planning:

Control Tower	110,000
Runway Lighting System	150,000
Sewer Disposal System	12,000



Boarding at Hana Airport, Maui.



Front lobby window of Kamuela Airport, Hawaii.



Upolu Airport

Summary Of Inter-Island Revenue

Fiscal Year July 1,

From:				To:										
				HONOLULU	HILO	UPOLU	KAMUELA	KONA	KAHULUI	HANA	MOLOKAI	KALAU-PAPA	LANAI	LIHUE
HONOLULU	IN	OUT	TOTAL											
Passengers	281,910	277,154	559,064	-----	78,929	3,094	3,658	17,912	68,758	3,422	16,700	987	5,530	78,164
Air Cargo (pounds)	8,292,747	13,201,447	21,494,194	-----	3,717,725	162,254	214,967	874,248	3,431,543	163,937	665,029	370,692	926,420	2,674,632
Air Mail (pounds)	418,356	366,025	784,381	-----	136,588	509	495	13,989	91,075	2,131	13,500	29,060	6,803	71,875
HILO	IN	OUT	TOTAL											
Passengers	100,284	88,601	188,885	76,122	-----	17	-----	2	10,534	15	306	-----	221	1,384
Air Cargo (pounds)	4,032,165	3,010,471	7,042,636	2,610,968	-----	1,407	1,708	168	225,561	3,725	19,373	-----	100,956	46,605
Air Mail (pounds)	136,953	250,310	387,263	250,236	-----	-----	-----	-----	31	-----	-----	-----	-----	43
UPOLU	IN	OUT	TOTAL											
Passengers	3,404	3,442	6,846	3,083	-----	-----	19	5	298	-----	14	-----	-----	23
Air Cargo (pounds)	179,187	255,731	434,918	238,957	-----	-----	-----	782	11,092	-----	848	-----	441	3,611
Air Mail (pounds)	509	2,428	2,937	2,428	-----	-----	-----	-----	-----	-----	-----	-----	-----	-----
KAMUELA	IN	OUT	TOTAL											
Passengers	4,003	4,589	8,592	4,244	17	-----	-----	22	209	-----	89	-----	3	5
Air Cargo (pounds)	243,046	2,087,331	2,330,377	2,069,292	15	-----	-----	1,619	7,332	-----	3,273	-----	66	5,734
Air Mail (pounds)	495	2,682	3,177	2,682	-----	-----	-----	-----	-----	-----	-----	-----	-----	-----
KONA	IN	OUT	TOTAL											
Passengers	23,107	36,079	59,186	30,191	20	5	-----	-----	2,382	2	29	-----	12	3,438
Air Cargo (pounds)	906,983	621,749	1,528,732	598,090	1,714	-----	-----	-----	3,998	-----	2,124	-----	2,243	13,580
Air Mail (pounds)	15,539	13,681	29,220	13,681	-----	-----	-----	-----	-----	-----	-----	-----	-----	-----
KAHULUI	IN	OUT	TOTAL											
Passengers	93,300	94,748	188,048	61,217	19,377	273	203	4,234	-----	662	4,743	16	3,116	907
Air Cargo (pounds)	3,771,916	2,152,156	5,924,072	1,476,936	260,619	15,039	12,565	13,432	-----	10,077	73,698	5,200	250,147	34,443
Air Mail (pounds)	91,344	72,460	163,804	69,751	314	-----	-----	1,550	-----	687	40	-----	118	-----

Passenger, Cargo, Air Mail Traffic

1955 to June 30, 1956

				HONOLULU	HILO	UPOLU	KAMUELA	KONA	KAHULUI	HANA	MOLOKAI	KALAU-PAPA	LANAI	LIHUE
HANA	IN	OUT	TOTAL											
Passengers	4,192	4,164	8,356	3,181	31	-----	1	144	805	-----	-----	-----	-----	2
Air Cargo (pounds)	178,087	293,353	471,440	281,340	185	23	1,078	8,239	2,303	-----	185	-----	-----	-----
Air Mail (pounds)	2,818	2,923	5,741	2,887	-----	-----	-----	-----	36	-----	-----	-----	-----	-----
MOLOKAI	IN	OUT	TOTAL											
Passengers	22,882	22,899	45,781	16,570	450	-----	64	9	5,127	-----	-----	175	453	51
Air Cargo (pounds)	780,171	308,095	1,088,266	192,591	23,809	120	12,350	6,427	26,404	94	-----	36,047	4,429	5,824
Air Mail (pounds)	13,574	10,407	23,981	10,166	-----	-----	-----	-----	-----	-----	-----	-----	-----	241
KALAU-PAPA	IN	OUT	TOTAL											
Passengers	1,178	1,247	2,425	922	6	-----	-----	-----	20	-----	293	-----	6	-----
Air Cargo (pounds)	411,939	64,503	476,442	64,503	-----	-----	-----	-----	-----	-----	-----	-----	-----	-----
Air Mail (pounds)	29,060	9,213	38,273	9,213	-----	-----	-----	-----	-----	-----	-----	-----	-----	-----
LANAI	IN	OUT	TOTAL											
Passengers	9,367	9,239	18,606	5,539	110	6	15	12	2,871	44	618	-----	-----	24
Air Cargo (pounds)	1,285,619	125,199	1,410,818	82,379	5,933	74	95	920	28,440	20	6,772	-----	-----	566
Air Mail (pounds)	6,921	5,411	12,332	5,175	-----	-----	-----	-----	202	-----	34	-----	-----	-----
LIHUE	IN	OUT	TOTAL											
Passengers	83,998	85,463	169,461	80,841	1,344	9	43	767	2,296	47	90	-----	26	-----
Air Cargo (pounds)	2,784,995	746,820	3,531,815	677,691	22,165	270	283	1,148	35,243	234	8,869	-----	917	-----
Air Mail (pounds)	72,159	52,188	124,347	52,137	51	-----	-----	-----	-----	-----	-----	-----	-----	-----

**SUMMARY OF OUTGOING INTER-ISLAND PASSENGER VOLUME
BY MONTHS AND BY AIRPORTS**

Fiscal Year July 1, 1955 to June 30, 1956

		HONOLULU	HILO	UPOLU	KAMUELA	KONA	KAHULUI	HANA	MOLOKAI	KALAU-PAPA	LANAI	LIHUE	TOTALS BY MONTHS
1955	July	30,408	9,155	385	599	3,536	9,767	411	2,465	131	661	9,566	67,084
	August	33,674	10,969	448	642	4,094	10,578	451	2,694	101	798	10,393	74,842
	September	25,692	10,284	316	437	2,697	8,034	258	1,806	90	705	7,849	58,168
	October	19,972	7,202	219	237	2,886	7,831	234	1,476	85	766	5,948	46,856
	November	17,749	4,868	254	307	2,042	6,302	271	1,902	98	984	5,562	40,339
	December	23,251	5,003	292	387	1,936	6,651	218	1,924	104	1,051	5,594	46,411
1956	January	16,728	5,904	290	388	2,654	7,227	406	1,755	88	776	6,578	42,794
	February	15,706	4,612	176	191	2,880	5,965	378	1,286	65	525	5,091	36,875
	March	18,516	5,217	170	261	3,079	6,232	406	1,650	140	659	5,906	42,236
	April	23,054	7,557	248	336	3,415	8,318	410	2,157	123	733	7,102	53,453
	May	20,827	7,754	200	250	3,125	6,680	407	1,698	120	641	6,509	48,211
	June	31,577	10,076	444	554	3,735	11,163	314	2,086	102	940	9,365	70,356
TOTALS BY AIRPORTS		277,154	88,601	3,442	4,589	36,079	94,748	4,164	22,899	1,247	9,239	85,463	627,625
1954-55 Fiscal Year Totals		259,063	83,868	4,244	4,041	30,764	91,016	4,149	22,936	1,177	8,747	77,011	587,016
Percent gain or loss from preceding fiscal year		7.0	5.6	-18.9	13.6	17.3	4.1	0.4	- 0.2	5.9	5.6	11.0	6.9

SUMMARY OF OUTGOING INTER-ISLAND CARGO AND AIR MAIL VOLUME

By Months and By Airports

Fiscal Year July 1, 1955 to June 30, 1956
(Volume in Pounds)

CARGO VOLUME

		HONOLULU	HILO	UPOLO	KAMUELA	KONA	KAHULUI	HANA	MOLOKAI	KALAU-PAPA	LANAI	LIHUE	TOTALS BY MONTHS
1955	July	1,153,991	266,569	11,267	245,833	43,708	250,483	3,896	26,289	5,666	12,513	72,928	2,093,143
	August	1,198,353	360,934	25,147	251,086	64,167	312,528	3,674	36,357	6,643	9,922	110,926	2,379,737
	September	1,144,816	277,938	13,968	227,025	31,899	195,557	3,807	25,217	4,393	9,466	81,023	2,015,109
	October	1,114,295	261,324	19,618	197,813	45,775	171,663	9,813	28,398	5,066	10,517	44,507	1,908,789
	November	1,100,032	278,114	24,308	83,886	64,160	148,330	1,690	20,859	7,126	12,600	42,412	1,783,517
	December	1,294,313	345,103	30,043	105,031	59,765	161,266	2,614	20,601	6,909	12,983	45,691	2,084,319
1956	January	997,591	223,196	25,520	93,148	99,636	135,082	33,908	16,173	3,968	15,206	39,710	1,683,138
	February	1,008,782	227,942	24,086	136,191	58,925	129,541	26,806	30,918	5,452	9,065	38,825	1,696,533
	March	1,111,560	241,080	19,985	153,453	52,498	169,802	64,743	21,181	3,701	6,832	53,655	1,898,490
	April	998,846	154,492	20,304	172,001	46,658	127,436	50,975	27,669	4,198	8,555	57,509	1,668,643
	May	1,037,910	183,330	19,443	207,333	23,205	176,545	55,610	34,992	7,108	7,509	61,115	1,814,100
	June	1,040,958	190,449	22,042	214,531	31,353	173,923	35,817	19,441	4,273	10,031	98,519	1,841,337
TOTALS BY AIRPORTS		13,201,447	3,010,471	255,731	2,087,331	621,749	2,152,156	293,353	308,095	64,503	125,199	746,820	22,866,855
1954-55 Fiscal Year Totals		14,125,258	3,615,267	301,274	1,596,302	695,661	2,569,420	33,040	316,561	73,711	144,837	672,047	24,143,378
Percent gain or loss from preceding fiscal year		- 6.5	-16.7	-15.1	30.8	-10.6	-16.2	787.9	- 2.7	-12.5	-13.6	11.1	- 5.3

AIR MAIL VOLUME

		HONOLULU	HILO	UPOLO	KAMUELA	KONA	KAHULUI	HANA	MOLOKAI	KALAU-PAPA	LANAI	LIHUE	TOTALS BY MONTHS
1955	July	25,515	13,264	146	279	818	5,324	183	777	482	356	3,653	50,797
	August	28,429	14,786	188	300	887	5,715	235	817	571	352	3,988	56,268
	September	28,315	17,551	132	238	811	5,223	162	785	708	390	3,950	58,265
	October	26,347	17,130	208	179	998	5,291	307	751	618	411	4,074	56,314
	November	27,684	21,236	196	142	980	5,306	225	772	540	410	3,956	61,447
	December	54,007	43,373	495	360	2,021	9,741	322	1,220	1,086	852	7,688	121,165
1956	January	27,399	14,454	162	205	1,131	5,520	190	796	739	474	3,784	54,854
	February	28,025	17,122	193	192	1,139	5,473	305	767	635	416	3,981	58,248
	March	32,060	25,870	200	163	1,270	5,793	313	857	693	449	4,407	72,075
	April	26,747	18,558	198	180	1,151	5,467	244	1,052	1,040	376	3,906	58,919
	May	30,799	29,078	162	209	1,337	7,851	235	958	1,511	535	4,704	77,379
	June	30,698	17,888	148	235	1,138	5,756	202	855	590	390	4,097	61,997
TOTALS BY AIRPORTS		366,025	250,310	2,428	2,682	13,681	72,460	2,923	10,407	9,213	5,411	52,188	787,728
1954-55 Fiscal Year Totals		345,674	225,957	3,893	2,026	11,489	67,484	2,714	24,614	7,855	5,201	51,155	748,062
Percent gain or loss from preceding fiscal year		5.9	10.8	-37.6	32.4	19.1	7.4	7.7	-57.7	17.3	4.0	2.0	5.3

**SUMMARY OF INTER-ISLAND PASSENGER,
CARGO AND AIR MAIL TRAFFIC
ALL AIRPORTS**

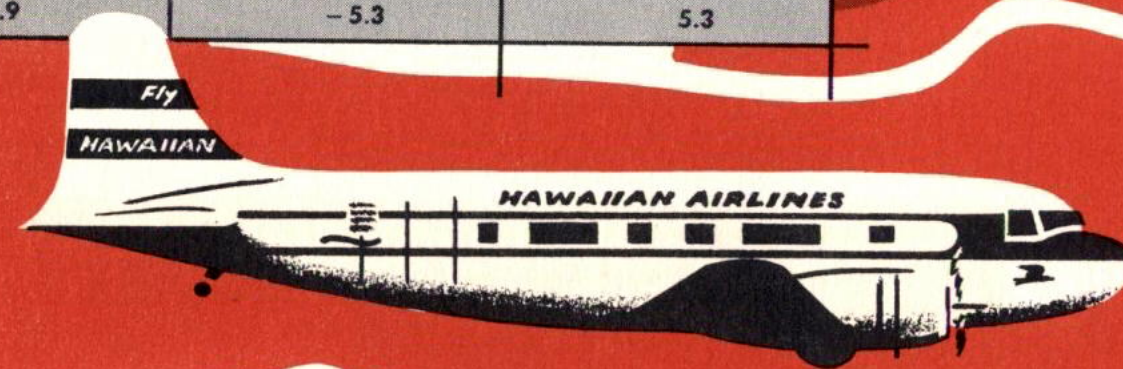
Fiscal Year July 1, 1955 to June 30, 1956

		PASSENGERS	CARGO Pounds	AIR MAIL Pounds
1955	July	67,084	2,093,143	50,797
	August	74,842	2,379,737	56,268
	September	58,168	2,015,109	58,265
	October	46,856	1,908,789	56,314
	November	40,339	1,783,517	61,447
	December	46,411	2,084,319	121,165
1956	January	42,794	1,683,138	54,854
	February	36,875	1,696,533	58,248
	March	42,236	1,898,490	72,075
	April	53,453	1,668,643	58,919
	May	48,211	1,814,100	77,379
	June	70,356	1,841,337	61,997
TOTALS		627,625	22,866,855	787,728
1954-55 Fiscal Year Totals		587,016	24,143,378	748,062
Percent gain or loss from 1954-55 fiscal year		6.9	- 5.3	5.3



THE NEW LOOK FOR NEIGHBOR ISLANDS

With increased tourist travel to the neighbor islands, the inter-island carriers have come forth with a fleet of vista-liners and view-masters to provide additional sight seeing thrills. The five foot windows provide passengers with increased opportunities for improved photography and viewing of the beauties of the neighbor isles.





STATEMENT OF INCOME AND EXPENDITURES

FISCAL YEAR ENDING JUNE 30, 1956

	TOTAL ALL FUNDS	FUEL TAX FUND S-6801	REVENUE FUND S-6802	FEDERAL GRANTS	BOND FUND APPROPRIATION		TOTAL ALL FUNDS	FUEL TAX FUND S-6801	REVENUE FUND S-6802	FEDERAL GRANTS	BOND FUND APPROPRIATION
OPENING BALANCE JULY 1, 1955	2,478,442	1,844,642	39,351		594,449*						
Loan Fund Appropriation by 1955 Legislature, Act 273	4,000,000				4,000,000						
	6,478,442	1,844,642	39,351		4,594,449						
Less—Reimbursement Act 247, S.L. 1955, Sec. 4	1,000,000	1,000,000									
ADJUSTED OPENING BAL. 7-1-55	5,478,442	844,642	39,351		4,594,449						
INCOME	TOTAL ALL FUNDS	FUEL TAX FUND S-6801	REVENUE FUND S-6802	FEDERAL GRANTS	BOND FUND APPROPRIATION	EXPENDITURES	TOTAL ALL FUNDS	FUEL TAX FUND S-6801	REVENUE FUND S-6802	FEDERAL GRANTS	BOND FUND APPROPRIATION
OPERATING INCOME						SURCHARGE EXPENDITURES**	70,114	55,965	14,149		
AERONAUTICAL REVENUES						OPERATING EXPENDITURES					
Fuel Tax Collections	1,118,893	1,118,893				Salaries and Wages	579,879	579,879			
Landing Fees	61,907		61,907			Other Current Expenses	280,427		280,427		
Rental of Land	25,791		25,791			Aviation Fuel Purchased for Resale	2,407		2,407		
Rental of Bldgs. & Hangars	157,002		157,002			Inventories & Other Prepaid Expenses	101,205		101,205		
Sale of Aviation Fuel	3,143		3,143			Equipment	37,160		37,160		
Rental of Equipment	300		300			CAPITAL EXPENDITURES					
ANCILLARY REVENUES						Land, Bldgs. & Const. Projects	860,909	825,113			35,796
Concession Fees	152,706		152,706			BOND REDEMPTION PAYMENTS	57,840		57,840		
Parking Meters	16,991		16,991								
Coin Operated Lockers	1,401		1,401								
NON-AERONAUTICAL REVENUES											
Rental of Land	34,378		34,378								
Rental of Buildings	176,629		176,629								
Rental of Equipment	3,381		3,381								
Other Fees & Income	28,686		28,686								
NON-OPERATING INCOME											
Federal Grants Received	166,528			166,528							
Refunds, Transfers, etc.	3,702	3,702									
TOTAL INCOME	1,951,438	1,122,595	662,315	166,528		TOTAL EXPENDITURES	1,989,941	1,460,957	493,188		35,796
						CLOSING BALANCE, JUNE 30, 1956	5,439,939	506,280	208,478	166,528	4,558,653
						TRANSFER OF FUNDS IN TRANSIT		95,201	(-95,201)		
						ADJUSTED CLOSING BALANCE, JUNE 30, 1956	5,439,939	601,481	113,277	166,528	4,558,653
						ENCUMBRANCES					
						Unliquidated Contract Encumbrances	137,569	136,949			620
						Other Const. Work-in-Progress	1,046,457	435,469		166,528	444,460
						TOTAL ENCUMBRANCES	1,184,026	572,418		166,528	445,080
						NET UNENCUMBERED BALANCE	4,255,913	29,063	113,277		4,113,573

*Act 18, S.S.L. 1949

**Act 247, S.L. 1955, Sec. 1 and 2

AIR CARRIER OPERATIONS

1948	87,050	(Inter-Island 80,350—Overseas 6,700)
1949	80,202	(Inter-Island 72,956—Overseas 7,246)
1950	91,042	(Inter-Island 85,166—Overseas 5,876)
1951	91,820	(Inter-Island 86,406—Overseas 5,414)
1952	104,744	(Inter-Island 100,350—Overseas 4,394)
1953	108,846	(Inter-Island 103,230—Overseas 5,616)
1954	97,104	(Inter-Island 90,116—Overseas 6,988)
1955	96,654	(Inter-Island 87,946—Overseas 8,708)
1956	100,240	(Inter-Island 89,954—Overseas 10,286)

PASSENGERS

1948	889,574	(Inter-Island 784,076—Overseas 105,498)
1949	890,588	(Inter-Island 770,380—Overseas 120,208)
1950	955,302	(Inter-Island 840,364—Overseas 114,938)
1951	1,021,987	(Inter-Island 896,748—Overseas 125,239)
1952	1,192,332	(Inter-Island 1,038,734—Overseas 153,598)
1953	1,291,717	(Inter-Island 1,109,122—Overseas 182,595)
1954	1,346,366	(Inter-Island 1,140,526—Overseas 205,840)
1955	1,429,453	(Inter-Island 1,174,032—Overseas 255,421)
1956	1,578,000	(Inter-Island 1,255,250—Overseas 322,750)



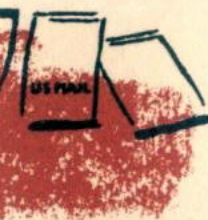
COMPARATIVE TRAFFIC



VOLUME HANDLED BY ALL AIRPORTS

Trends

Steadily increasing air passenger travel grew to a figure of 1½ million passing through the terminals of Hawaii's airports, a figure equivalent to three times the total population of the territory.



AIR MAIL (POUNDS)



AIR CARGO (POUNDS)





HAWAII AERONAUTICS COMMISSION