

**HAWAII AERONAUTICS
COMMISSION
ANNUAL REPORT FOR 1960**

*William F. Quinn, Governor of Hawaii, left,
and Francis K. Sylva, Chairman of the
Hawaii Aeronautics Commission, review plans of
the new terminal complex currently under
construction at Honolulu International Airport.*

HAWAII AERONAUTICS COMMISSION

ANNUAL REPORT FOR THE FISCAL YEAR 1959 / 1960

OVERSEAS TERMINAL BUILDING / HONOLULU INTERNATIONAL AIRPORT





CONTENTS

COMMISSIONERS, EXECUTIVE OFFICERS AND ADMINISTRATIVE STAFF	3
LETTER OF TRANSMITTAL	4
MAP SHOWING AIRPORTS WITHIN THE STATE AIRPORT SYSTEM	5
HIGHLIGHTS OF 1959/1960	6
TABLE 1 / AIRCRAFT OPERATIONS SUMMARY	8
TABLE 2 / REVENUE PASSENGER, CARGO, AIR MAIL SUMMARY	9
TABLE 3 / INTER-ISLAND REVENUE PASSENGER, CARGO, AIR MAIL TOTALS	10
TABLE 4 / INTER-ISLAND REVENUE PASSENGER TRAFFIC SUMMARY	11
TABLE 5 / INTER-ISLAND REVENUE AIR CARGO TRAFFIC SUMMARY	11
TABLE 6 / INTER-ISLAND REVENUE AIR MAIL TRAFFIC SUMMARY	11
CONSOLIDATED STATEMENT OF RECEIPTS AND EXPENDITURES	12

COMMISSIONERS

FRANCIS K. SYLVA CHAIRMAN—OAHU
TIM HO VICE CHAIRMAN—OAHU
HERBERT N. FUKATA SECRETARY—OAHU
EMORY B. BRONTE MEMBER—OAHU
HOWARD HUBBARD MEMBER—OAHU
TOM LEE MEMBER—OAHU
GEORGE S. FUJII MEMBER—OAHU
JAMES S. BEATTY MEMBER—HAWAII
DONALD TOKUNAGA MEMBER—MAUI
NOBUICHI MASUNAGA MEMBER—KAUAI

EXECUTIVE OFFICERS

A. P. STORRS DIRECTOR OF AERONAUTICS
R. M. WALTON ASSISTANT DIRECTOR OF AERONAUTICS

ADMINISTRATIVE STAFF

GILBERT L. LIVINGSTON AIRPORT MANAGER—HONOLULU
WILLIAM NEILSON AIRPORT MANAGER—MAUI COUNTY AIRPORTS
COIN E. PERIN AIRPORT MANAGER—KAUAI COUNTY AIRPORTS
WILLIAM KRAFT AIRPORT MANAGER—HAWAII COUNTY AIRPORTS
CHARLES BENTO, JR. FISCAL OFFICER

*Honorable William F. Quinn
Governor of Hawaii
Iolani Palace
Honolulu, Hawaii*

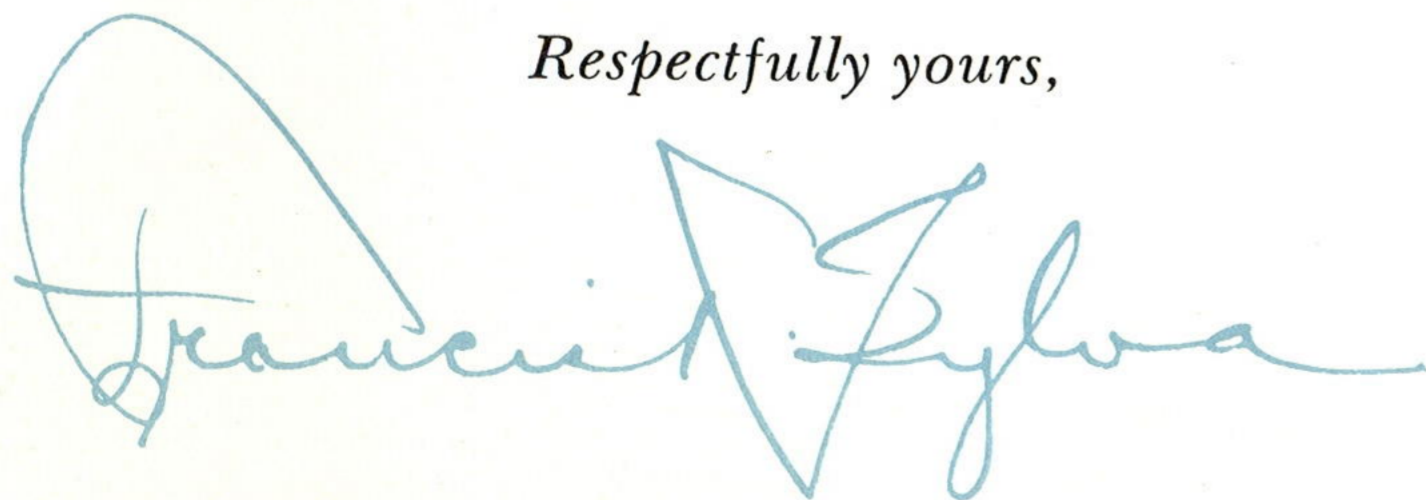
Dear Governor:

On behalf of the Hawaii Aeronautics Commission, I am pleased to submit our annual report for 1960. This will be the final such report from the Commission, whose activities will be assumed by the Department of Transportation on July 1, 1961.

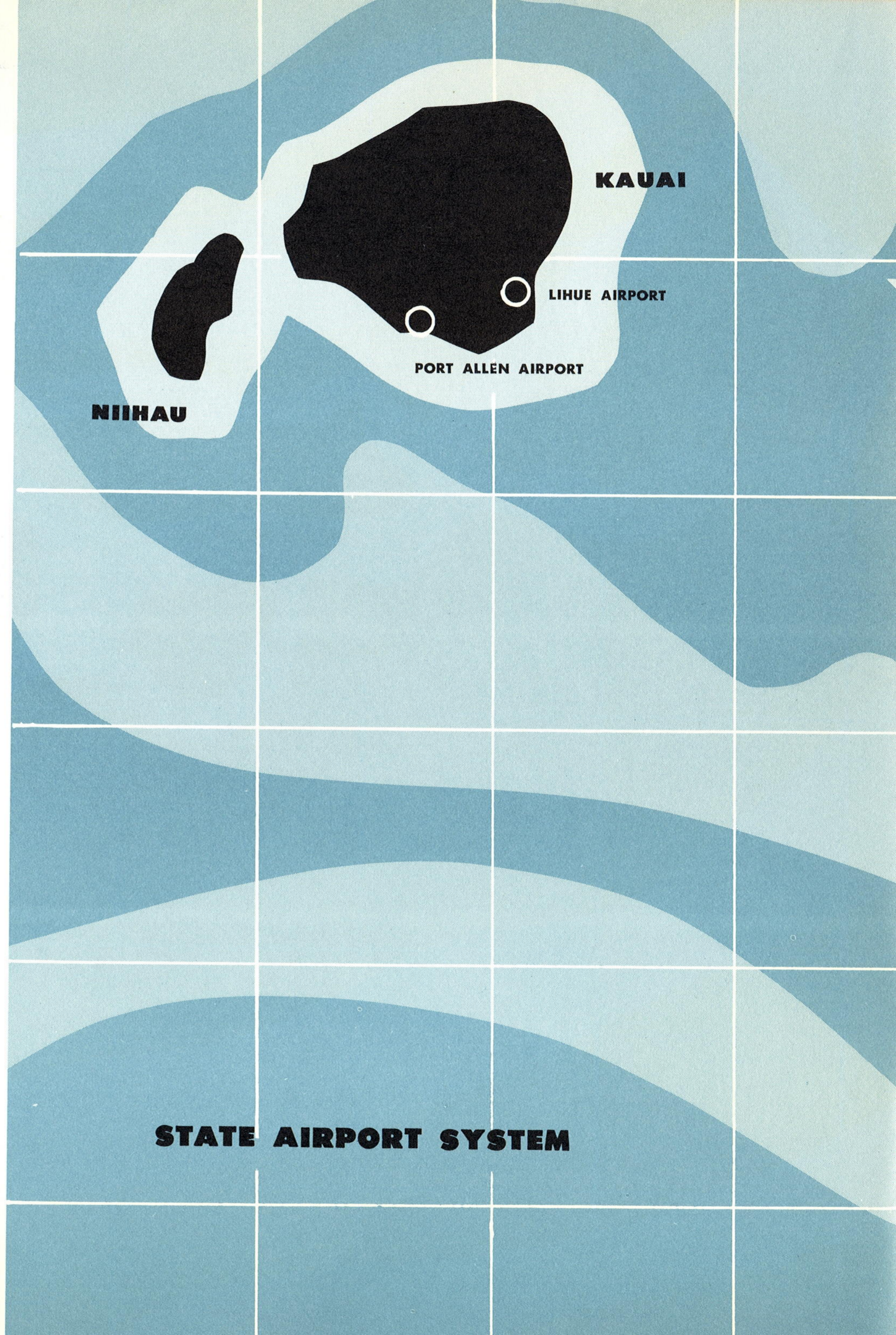
With the increasing impact of air travel on the economy and people of our state, the 1960 activities highlighted herein are more vital than those of any previous year.

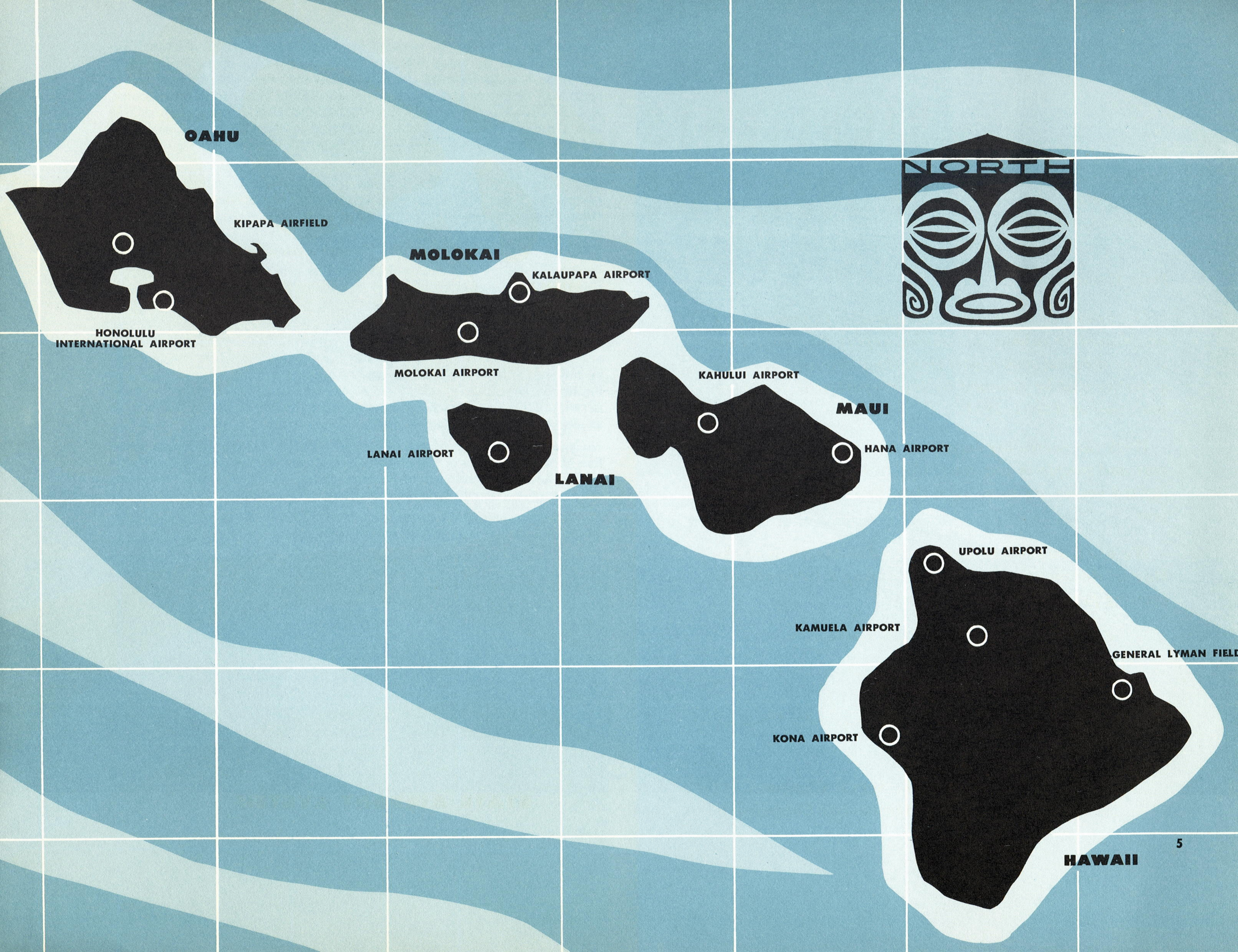
We are honored to have served as members of the Hawaii Aeronautics Commission during a tremendously exciting period of Hawaii's history.

Respectfully yours,



FRANCIS K. SYLVA, Chairman
Hawaii Aeronautics Commission





OAHU

KIPAPA AIRFIELD

HONOLULU
INTERNATIONAL AIRPORT

MOLOKAI

KALAUPAPA AIRPORT

MOLOKAI AIRPORT

LANAI AIRPORT

LANAI

KAHULUI AIRPORT

MAUI

HANA AIRPORT

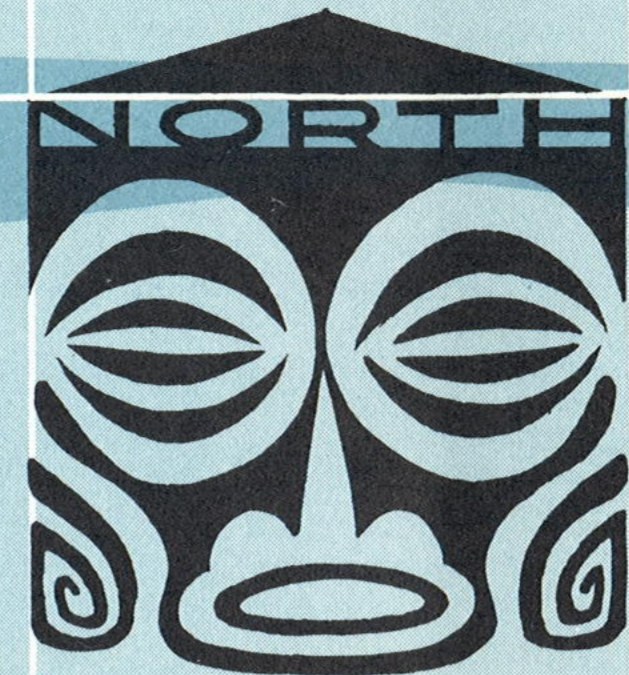
UPOLU AIRPORT

KAMUELA AIRPORT

GENERAL LYMAN FIELD

KONA AIRPORT

HAWAII



HIGHLIGHTS OF 1959/1960

Construction of the jet age terminal facilities for Honolulu International Airport, which was started in February 1959, is proceeding according to schedule. Stage 1, which included site preparation and rough grading work on the north side of the airport where the new terminal facilities will be located, was completed in December 1959. Work was immediately started on the next stage for building site development and construction of taxiways leading to the new terminal. This work is expected to be completed in August 1960.

During the fiscal year 1960, the Hawaii Aeronautics Commission awarded contracts for the next succeeding construction stages. These included construction of all electrical, water, drainage, sewer systems and communications ducts; electrical distribution systems; the terminal buildings, and grading and paving of aprons and installation of related utilities.

Work was started in February 1960 for the construction of all electrical, water, drainage, sewer systems and communication ducts and is expected to be completed in October 1960.

Construction of the new terminal buildings was started in March 1960, and the Inter-Island passenger terminal is expected to be completed by the end of November 1960. The Foreign Arrivals building is expected to be completed by the end of June 1961. Construction work on the remaining two units of the terminal facilities, the Domestic Arrivals and Overseas Departure-Administration buildings, are now underway and completion of these buildings is expected by the end of August 1961.

While all this construction activity is going on on the north side and a portion of the south side of the airport, aircraft activity, passenger traffic and related activities continued to increase during the fiscal year, over-taxing the present inadequate terminal facilities.

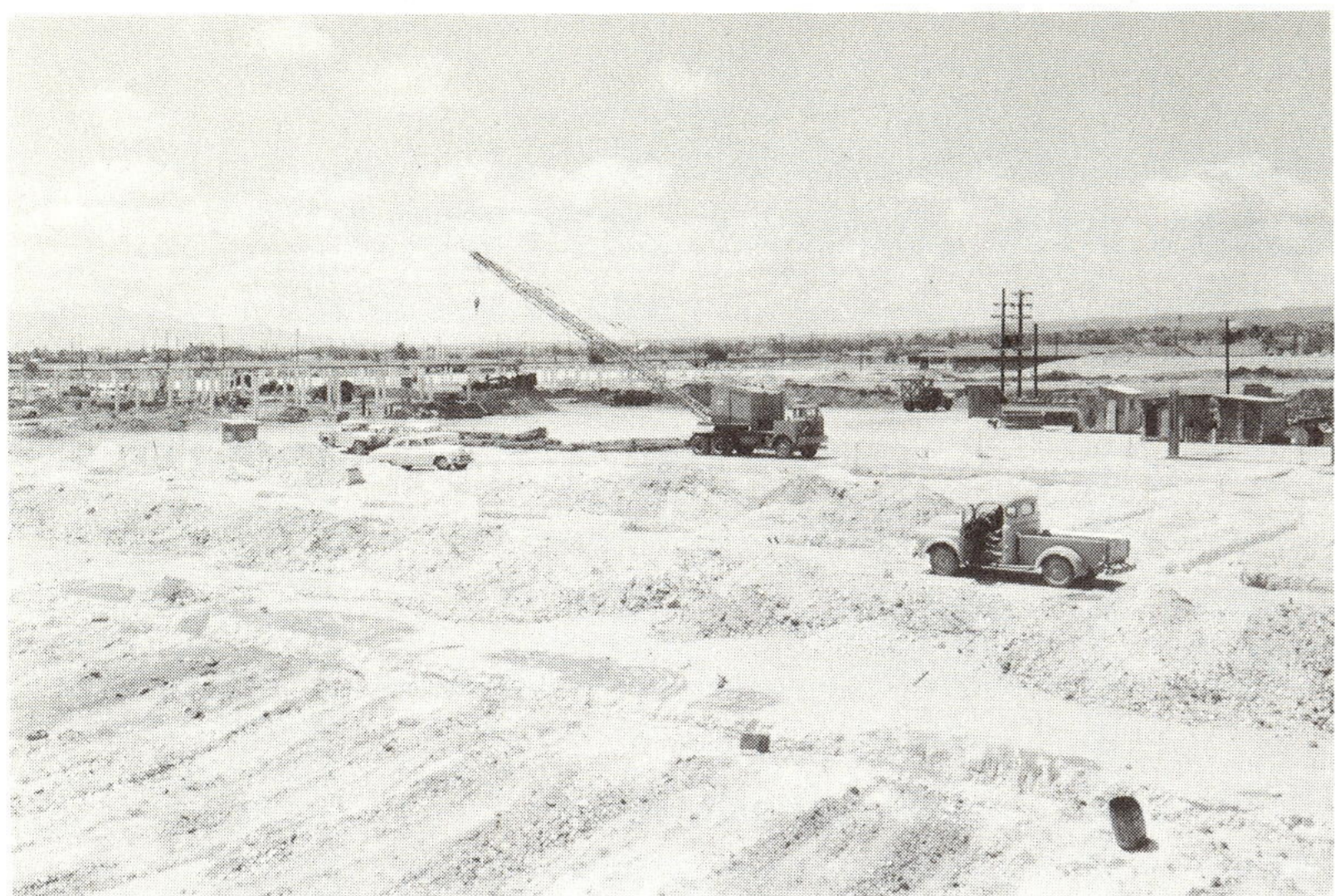
Aircraft operations at the airport totalled 266,254 landings and takeoffs, for an increase of 1.4 percent over the preceding year.

The fiscal year witnessed the inauguration of jet aircraft service by several airlines. Qantas Empire Airways began its Boeing 707 jet service through Hawaii in August 1959, followed by Pan American Airways which started Boeing 707 jet service between the mainland United States and Hawaii in September 1959. United Air Lines began its DC-8 jet service in March 1960.

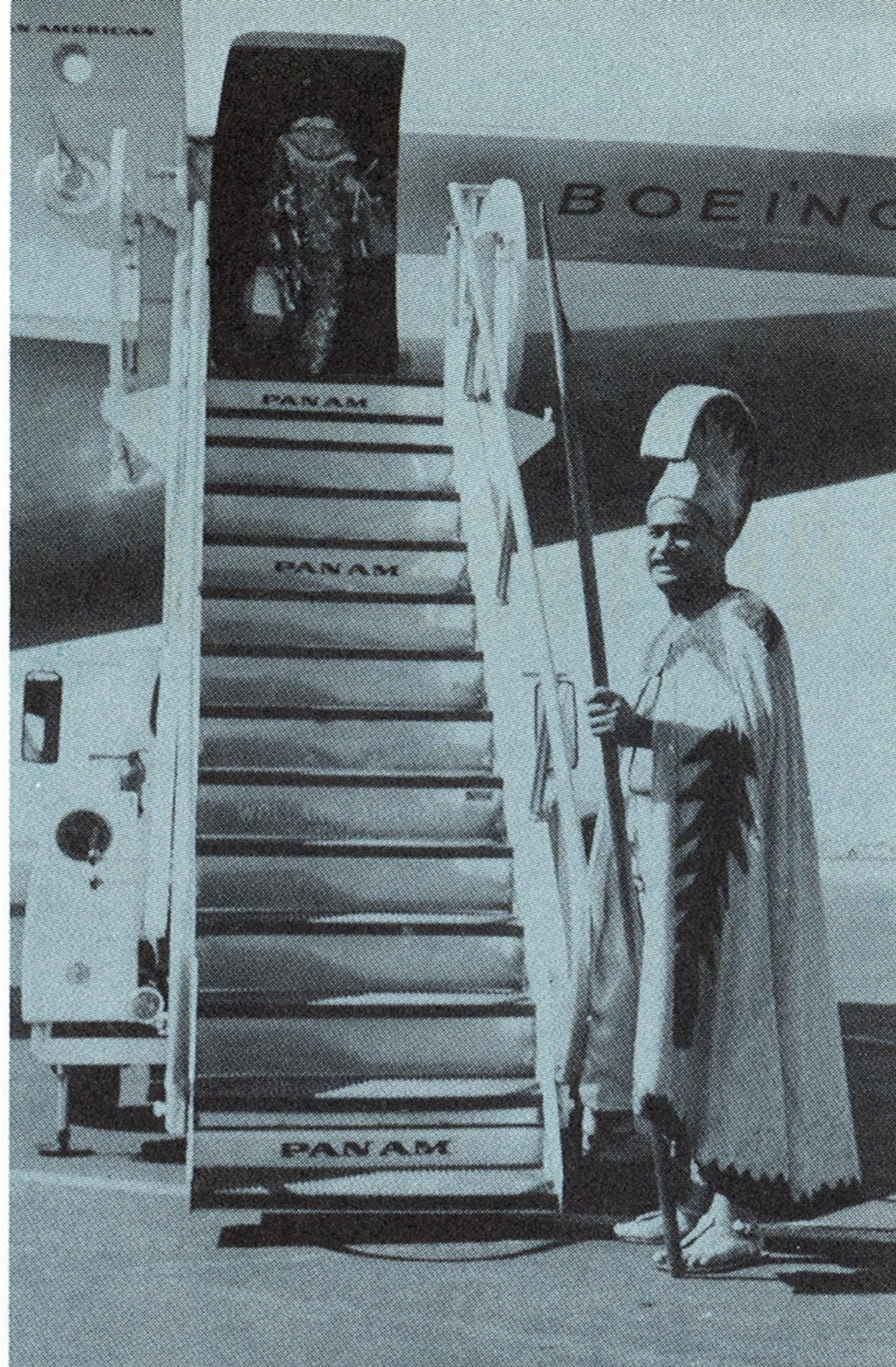
Commercial passenger traffic at the airport increased 33.3 percent over the preceding year. This increase is attributed to the effect of statehood for Hawaii in August 1959 and the aforementioned inauguration of jet aircraft service.

Inter-island passenger traffic increased by 32.6 percent due to more and more visitors coming to Hawaii travelling to the neighbor islands.

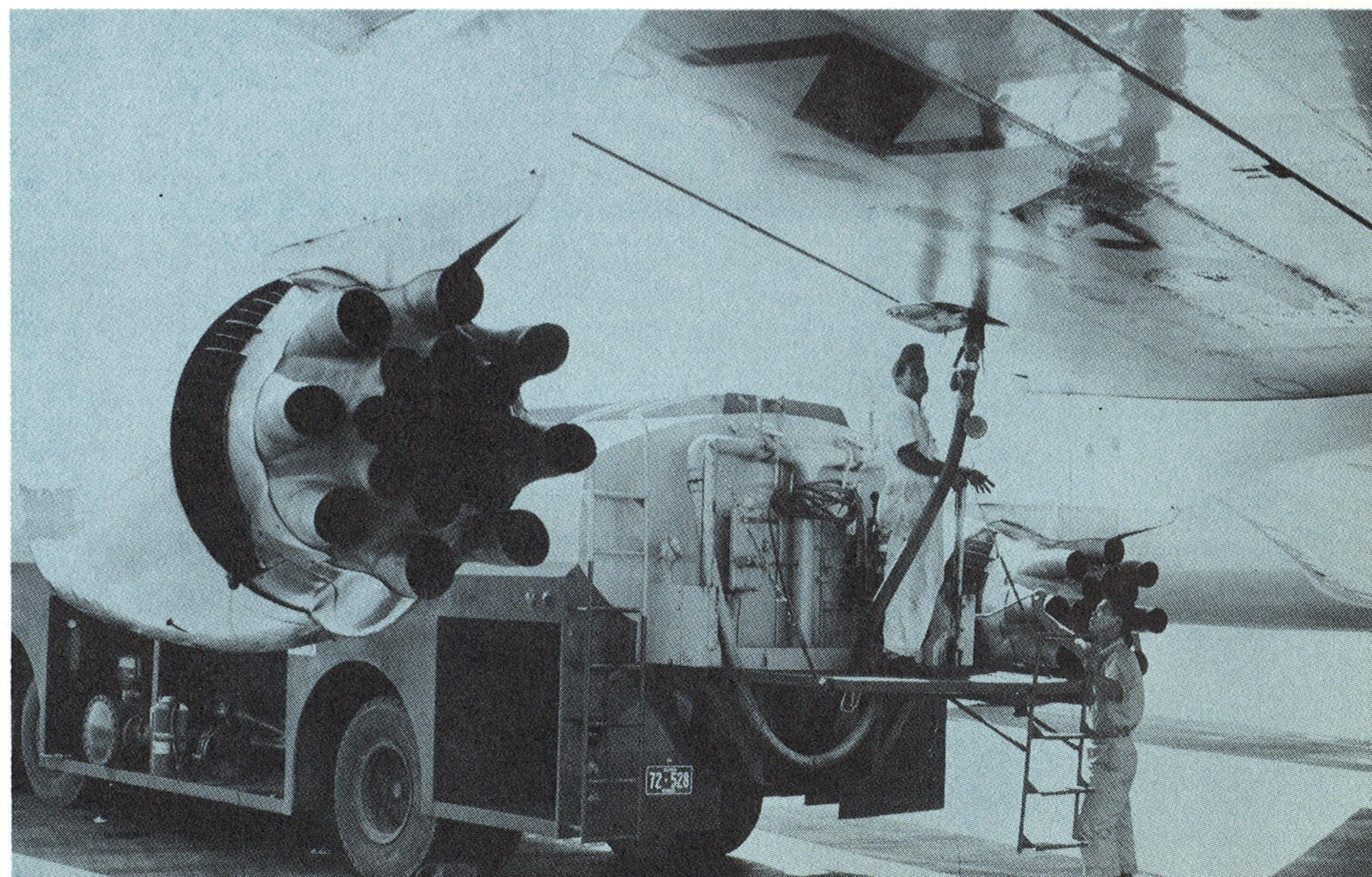
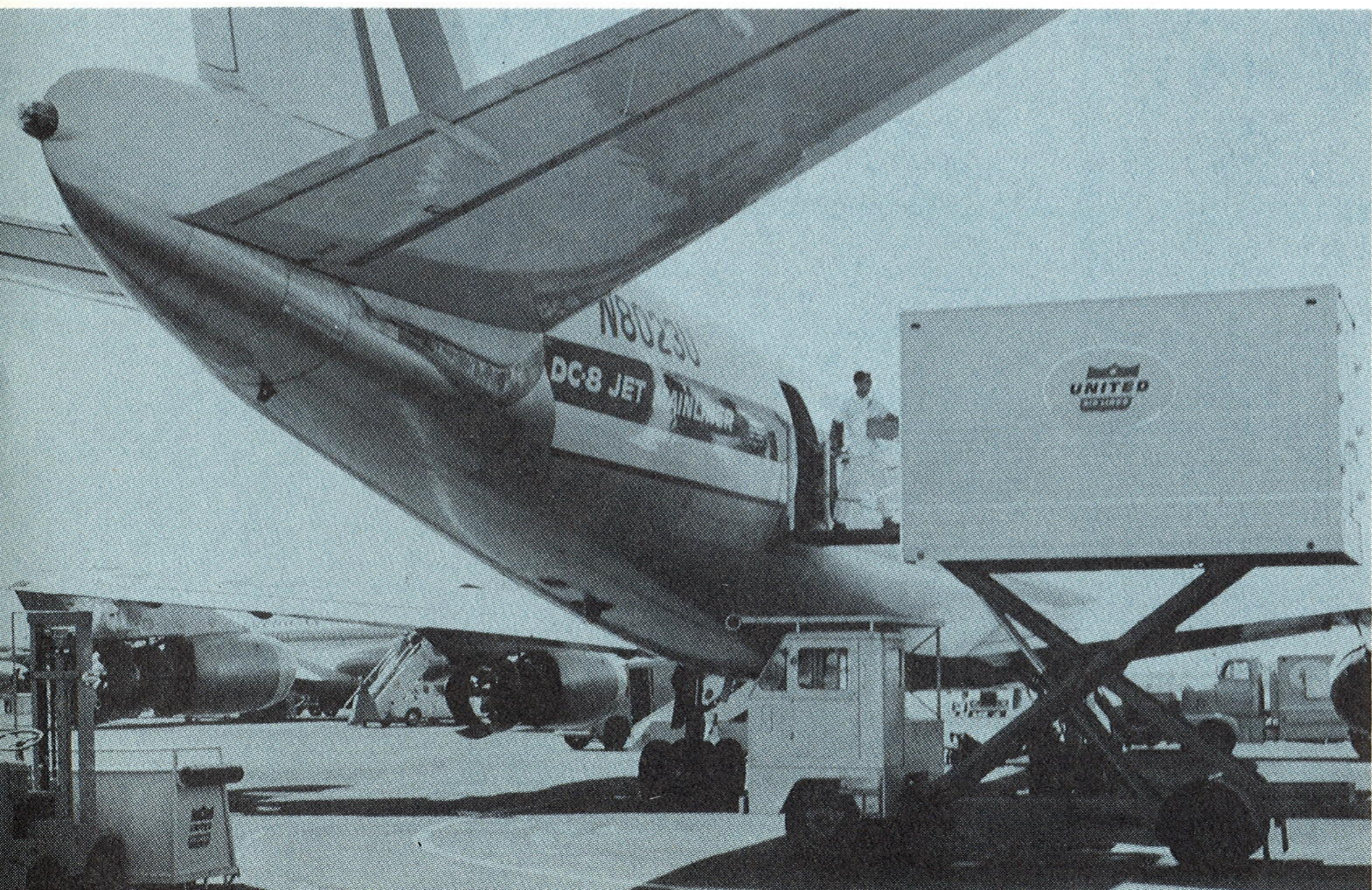
Under the state government reorganization act of 1959, the Hawaii Aeronautics Commission was placed under the Department of Transportation and all commissioners' terms of office expired on December 31, 1959. The reorganization act abolishes the Hawaii Aeronautics Commission on July 1, 1961, and its functions will be taken over by the Department of Transportation. Until that time, the following have been appointed to serve on the Commission: Dr. Francis K. Sylva, Emory Bronte, Howard Hubbard, George Fujii, Herbert Fukata and Thomas Lee, all of Honolulu; David Furtado, Hawaii; Donald Tokunaga, Maui, and Dr. Nobuichi Masunaga, Kauai. Tim Ho, director of transportation is ex-officio member of the Commission.



1959-60 saw the initial stages of site improvement and early construction of the new Terminal Complex for Honolulu Airport.



Current operations at Honolulu International Airport reflect all the modern functions of major airports the nation over, with special air freight handling, efficient servicing of aircraft and Hawaii's unique greeting of new arrivals.



HONOLULU INTERNATIONAL AIRPORT

AIRCRAFT OPERATIONS SUMMARY

FISCAL YEAR JULY 1, 1959 TO JUNE 30, 1960 / BY MONTHS

	AIR CARRIER	GENERAL AVIATION	MILITARY AIRCRAFT	TOTAL OPERATIONS
1959 JULY	8,248	3,173	11,457	22,878
AUGUST	8,713	2,813	11,809	23,335
SEPTEMBER	6,845	3,098	11,897	21,840
OCTOBER	7,814	3,646	15,482	26,942
NOVEMBER	7,836	3,958	13,363	25,157
DECEMBER	7,302	2,974	11,752	22,028
1960 JANUARY	7,225	3,865	9,706	20,796
FEBRUARY	6,263	3,156	8,050	17,469
MARCH	6,372	4,128	9,317	19,817
APRIL	7,314	4,393	9,426	21,133
MAY	6,840	4,091	11,555	22,486
JUNE	7,213	2,969	12,191	22,373
TOTALS	87,985	42,264	136,005	266,254
FISCAL YEAR 1959 TOTALS	87,719	36,816	138,061	262,596
PERCENT GAIN OR LOSS FROM 1959	0.3	14.8	-1.5	1.4

HONOLULU INTERNATIONAL AIRPORT

REVENUE PASSENGER, CARGO, AIR MAIL SUMMARY

FISCAL YEAR JULY 1, 1959 TO JUNE 30, 1960

PASSENGERS		OUTGOING	INCOMING	TOTALS
INTER-ISLAND		404,179	407,762	811,941
OVERSEAS		360,927	362,394	723,321
TOTAL PASSENGERS		765,106	770,156	1,535,262
FISCAL YEAR 1959 TOTALS		575,506	576,627	1,152,133
PERCENT GAIN OR LOSS FROM 1959		32.9	33.6	33.3

CARGO		OUTGOING POUNDS	INCOMING POUNDS	TOTAL POUNDS
INTER-ISLAND		15,445,548	7,745,140	23,190,688
OVERSEAS		9,898,293	12,092,447	21,990,740
TOTAL CARGO		25,343,841	19,837,587	45,181,428
FISCAL YEAR 1959 TOTALS		22,966,248	18,822,023	41,788,271
PERCENT GAIN OR LOSS FROM 1959		10.4	5.4	8.1

AIR MAIL		OUTGOING POUNDS	INCOMING POUNDS	TOTAL POUNDS
INTER-ISLAND		520,272	512,994	1,033,266
OVERSEAS		7,955,490	8,702,156	16,657,646
TOTAL AIR MAIL		8,475,762	9,215,150	17,690,912
FISCAL YEAR 1959 TOTALS		7,212,316	7,910,042	15,122,358
PERCENT GAIN OR LOSS FROM 1959		17.5	16.5	17.0

HAWAII STATE AIRPORTS

**INTER-ISLAND REVENUE PASSENGER, CARGO,
AIR MAIL TOTALS**

FISCAL YEAR JULY 1, 1959 TO JUNE 30, 1960 / BY MONTHS

		PASSENGERS	CARGO POUNDS	AIR MAIL POUNDS
1959	JULY	92,353	2,164,737	70,829
	AUGUST	107,598	2,256,716	69,981
	SEPTEMBER	69,253	2,105,998	73,951
	OCTOBER	64,054	2,095,505	78,865
	NOVEMBER	75,886	1,969,191	69,797
	DECEMBER	69,782	2,267,342	169,437
1960	JANUARY	73,218	1,858,499	74,210
	FEBRUARY	67,718	1,858,818	73,751
	MARCH	65,138	2,102,187	81,790
	APRIL	76,966	2,004,216	88,451
	MAY	72,473	2,162,854	91,317
	JUNE	88,396	2,487,403	93,970
	TOTALS	922,835	25,333,466	1,036,349
FISCAL YEAR 1959 TOTALS		695,865	22,385,244	936,068
PERCENT GAIN OR LOSS FROM 1959		32.6	13.2	10.7

HAWAII STATE AIRPORTS / INTER-ISLAND REVENUE PASSENGER TRAFFIC SUMMARY / FISCAL YEAR JULY 1, 1959 TO JUNE 30, 1960

FROM:	TO: HONOLULU		HILO	UPOLU	KAMUELA	KONA	KAHULUI	HANA	MOLOKAI	KALAU-PAPA	LANAI	LIHUE
HONOLULU	404,179	3,791*	109,428	1,940	5,334	31,618	97,223	4,943	20,506	1,039	5,614	122,743
HILO	124,118	101,495	1,355*	2	27	238	16,597	163	630	6	305	3,300
UPOLU	2,244	1,824	2				319		98			1
KAMUELA	6,047	5,489	20			1	421		78		1	37
KONA	65,795	48,757	71		2	85*	4,768	251	76		51	11,734
KAHULUI	133,809	83,122	32,482	275	381	6,444	143*	987	5,258	24	3,274	1,419
HANA	5,931	4,587	46			12	1,202					84
MOLOKAI	28,362	20,653	238	81	76	95	5,635	7		509	890	178
KALAU-PAPA	1,764	1,027	6				28		702		1	
LANAI	10,119	5,676	241		18	88	3,098	1	915	5		77
LIHUE	140,467	131,341	2,999	2	44	2,550	3,340	39	106		46	
TOTALS	922,835	407,762	146,888	2,300	5,882	41,131	132,774	6,391	28,369	1,583	10,182	139,573

* Kilauea-Iki and Kapoho volcano eruptions sight seeing flight passengers

TOTAL INTER-ISLAND REVENUE PASSENGERS, JULY 1, 1959 TO JUNE 30, 1960—922,835

HAWAII STATE AIRPORTS / INTER-ISLAND REVENUE AIR CARGO TRAFFIC SUMMARY (POUNDS CARRIED) / FISCAL YEAR JULY 1, 1959 TO JUNE 30, 1960

FROM:	TO: HONOLULU		HILO	UPOLU	KAMUELA	KONA	KAHULUI	HANA	MOLOKAI	KALAU-PAPA	LANAI	LIHUE
HONOLULU	15,445,548		4,502,499	148,396	187,301	829,564	3,994,263	172,402	831,716	355,891	749,570	3,673,946
HILO	3,714,167	3,257,141		115	100	17,485	240,234	3,932	11,982		78,237	104,941
UPOLU	114,458	102,029					9,530		1,221		632	1,046
KAMUELA	1,132,472	922,433				1,600	117,822	9	5,560		2,501	82,547
KONA	526,423	502,790	575		155		11,472	115	2,097		3,389	5,830
KAHULUI	2,689,867	1,499,863	515,485	2,927	13,317	22,327		25,810	49,819	10,100	510,770	39,449
HANA	359,050	356,026	487				2,036		90		9	402
MOLOKAI	320,884	219,139	7,196	6,815	1,435	1,782	35,572	44		38,520	7,947	2,434
KALAU-PAPA	65,418	63,179							2,239			
LANAI	147,965	77,137	14,865	844	50	6,184	40,858	101	6,898			1,028
LIHUE	817,214	745,403	35,704	93	1,294	6,177	25,664	65	2,292		522	
TOTALS	25,333,466	7,745,140	5,076,811	159,190	203,652	885,119	4,477,451	202,478	913,914	404,511	1,353,577	3,911,623

TOTAL INTER-ISLAND REVENUE AIR CARGO, JULY 1, 1959 TO JUNE 30, 1960—25,333,466 POUNDS

HAWAII STATE AIRPORTS / INTER-ISLAND REVENUE AIR MAIL TRAFFIC SUMMARY (POUNDS CARRIED) / FISCAL YEAR JULY 1, 1959 TO JUNE 30, 1960

FROM:	TO: HONOLULU		HILO	UPOLU	KAMUELA	KONA	KAHULUI	HANA	MOLOKAI	KALAU-PAPA	LANAI	LIHUE
HONOLULU	520,272		204,491	1	992	19,853	130,429	3,727	18,024	28,293	7,182	107,280
HILO	301,065	301,042					23					
UPOLU	44	44										
KAMUELA	3,250	3,250										
KONA	17,897	17,888					9					
KAHULUI	89,999	87,115	1,459		89	304		780	239		13	
HANA	3,883	3,771					112					
MOLOKAI	12,272	12,248									24	
KALAU-PAPA	7,900	7,900										
LANAI	5,922	5,891							31			
LIHUE	73,845	73,845										
TOTALS	1,036,349	512,994	205,950	1	1,081	20,157	130,573	4,507	18,294	28,293	7,219	107,280

TOTAL INTER-ISLAND REVENUE AIR MAIL, JULY 1, 1959 TO JUNE 30, 1960—1,036,349 POUNDS

HAWAII AERONAUTICS COMMISSION

CONSOLIDATED STATEMENT OF RECEIPTS AND EXPENDITURES

COVERING ALL FUNDS FOR FISCAL YEAR JULY 1, 1959 TO JUNE 30, 1960

OPENING BALANCE, JULY 1, 1959		17,585,066.46
RECEIPTS:		
Aviation Fuel Tax Collections	2,116,799.09	
Airport Revenues and Fees	778,890.11	
Federal Grants In Aid	2,146,246.16	
Interest Earned on Investments	156,769.72	
Vacation Transfers	1,800.80	
Reimbursement of Expenses	1,723.92	
Refund of Deposit to Court	1,009.50	
Trust Fund Collections	29,657.39	
TOTAL RECEIPTS		5,232,896.69
EXPENDITURES:		
Operating Expenditures:		
Personal Services	718,348.12	
Other Current Expenses	425,273.66	
Other Equipment	16,540.35	
Motor Vehicles	10,445.01	
Runway Maintenance and Special Repair Projects	92,859.75	
Civil Air Patrol	15,000.00	
Airport Zoning Board	144.55	
TOTAL OPERATING EXPENDITURES	1,278,611.44	
Other Expenditures:		
Investments	9,253,870.55	
Trust Fund Refunds	9,566.71	
5% Surcharge	88,556.40	
Repayment to State Treasurer for Advance	1,000,000.00	
Debt Service Payments:		
G. O. Bond Interest	187,659.15	
G. O. Bond Principal	296,411.81	
Aviation Revenue Bond Interest	752,500.00	
Total Other Expenditures	11,588,564.62	
Capital Expenditures: Land, Buildings, Construction	2,242,714.71	
TOTAL, ALL EXPENDITURES		15,109,890.77
NET CLOSING BALANCES, JUNE 30, 1960		7,708,072.38
PLUS: INVESTMENTS		9,253,870.55
NET FUND BALANCES, JUNE 30, 1960		16,961,942.93
UNLIQUIDATED CONTRACT ENCUMBRANCES		7,881,999.02
NET UNENCUMBERED BALANCES		9,079,943.91

