

State of New Jersey
Department of Law and Public Safety
Division of Criminal Justice



State Medical Examiner Office

Annual Report
2005

Regional Medical Examiner Office

Regional Medical Examiner Office Annual Report 2005

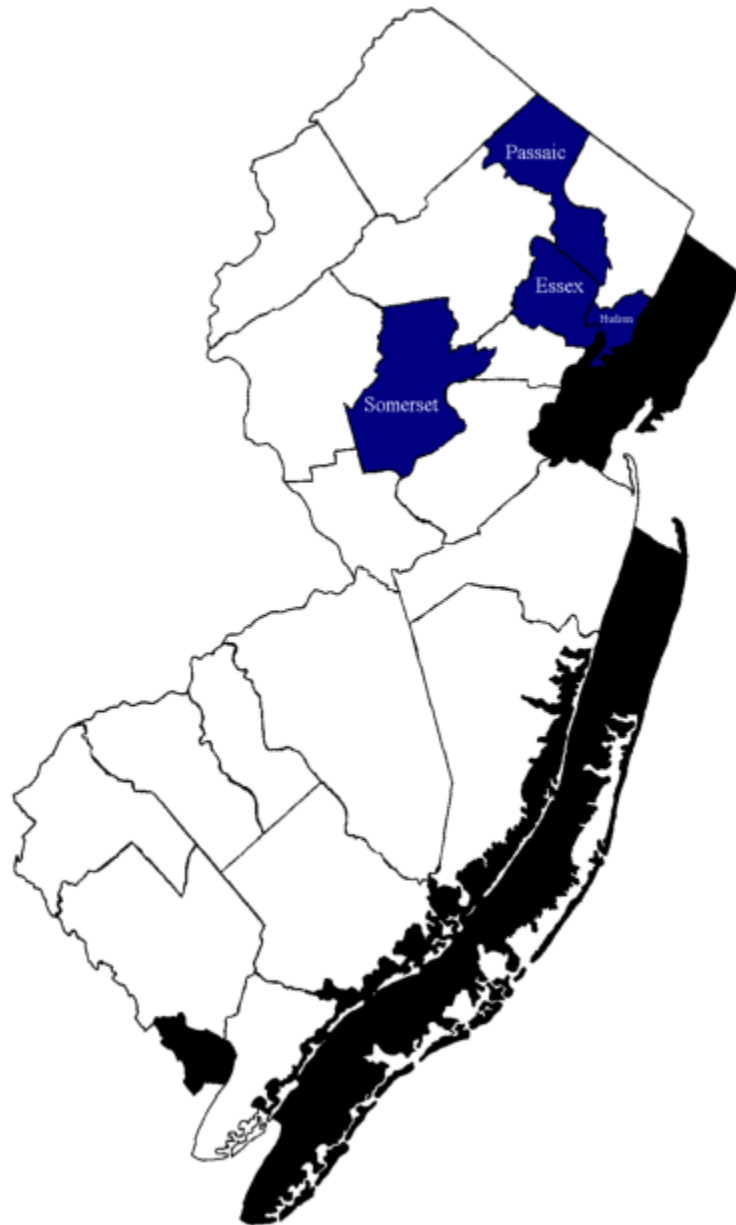


Table of Contents

INTRODUCTION

Manner of Death

Total Annual Activity	8
Manner of Death for the Region	9
Manner of Death for Essex County.....	10
Manner of Death for Hudson County	11
Manner of Death for Passaic County	12
Manner of Death for Somerset County.....	13
Manner of Death for Region by Gender.....	14

Accidental Death

Accidents by Category for the Region	16
Accidents by Category for Essex, Hudson, Passaic, and Somerset Counties.....	17
Accidents by Age and Gender for the Region, Essex, Hudson, Passaic, and Somerset Counties	18
Accidents by Race for the Region	19
Accidents by Race for Essex, Hudson, Passaic, and Somerset Counties	20
Vehicular Fatalities (Car, Truck, Van, Bus, Train, Bicycle, Motorcycle, Airplane) and Positive Toxicology for the Region.....	21
Vehicular Fatalities by Age and Gender	22
Vehicular Fatalities by Race for the Region	23
Vehicular Fatalities by Race for Essex, Hudson, Passaic, and Somerset Counties.....	24
Vehicular Fatalities by Driver/Passenger/Pedestrian for the Region	25
Vehicular Fatalities by Driver/Passenger/Pedestrian for Essex, Hudson, Passaic, and Somerset Counties	26

Natural Death

Naturals by Age and Gender for the Region	28
Naturals by Age and Gender for Essex County	29
Naturals by Age and Gender for Hudson County	30
Naturals by Age and Gender for Passaic County	31
Naturals by Age and Gender for Somerset County	32
Naturals by Race for the Region	33
Naturals by Race for Essex, Hudson, Passaic, and Somerset Counties	34

Homicides

Homicides by Category for the Region	3 6
Homicides by Category for Essex, Hudson, Passaic, and Somerset Counties	3 7
Homicides by Age and Gender for the Region	3 8
Homicides by Age and Gender for Essex County	3 9
Homicides by Age and Gender for Hudson County	4 0
Homicides by Age and Gender for Passaic County	4 1
Homicides by Age and Gender for Somerset County	4 2
Homicides by Race for the Region	4 3
Homicides by Race for Essex, Hudson, Passaic, and Somerset Counties	4 4
Homicide Rate	4 5

Suicides

Suicides by Category for the Region	4 7
Suicides by Category for Essex, Hudson, Passaic, and Somerset Counties	4 8
Suicides by Age and Gender for the Region	4 9
Suicides by Age and Gender for Essex County	5 0
Suicides by Age and Gender for Hudson County	5 1
Suicides by Age and Gender for Passaic County	5 2
Suicides by Age and Gender for Somerset County	5 3
Suicides by Race for the Region	5 4
Suicides by Race for Essex, Hudson, Passaic, and Somerset Counties	5 5

Drug Abuse Cases

Drug Abuse Cases (Illicit Drugs)	5 7
Drug Positive Cases by Manner of Death for the Region	5 8
Drug Abuse Cases - Causative or Contributory	5 9

Death in Custody

Death in Custody for the Region	6 1
---------------------------------------	-----

Pediatric Cases

Fetal Deaths	6 3
Sudden Infant Death Syndrome	6 3
Pediatric (15 years of age and less) by Manner of Death for the Region	6 4
Pediatric (15 years of age and less) by Manner of Death for the Essex County	6 5
Pediatric (15 years of age and less) by Manner of Death for the Hudson County	6 6
Pediatric (15 years of age and less) by Manner of Death for the Passaic County	6 7
Pediatric (15 years of age and less) by Manner of Death for the Somerset County	6 8
Pediatric (15 years of age and less) Accidents by Category for the Region	6 9
Pediatric (15 years of age and less) Accidents by Category for Essex, Hudson, Passaic, and Somerset Counties	7 0
Pediatric (15 years of age and less) Suicide	7 1

Pediatric (15 years of age and less) Homicides by Category for the Region	71
Pediatric (15 years of age and less) Homicides by Category for Essex, Hudson, Passaic, and Somerset Counties	72

Manner by Month

Naturals by Month for the Region.....	74
Accidents by Month for the Region.....	75
Suicides by Month for the Region	76
Homicides by Month for the Region	77

INTRODUCTION TO ANNUAL REPORT 2005

This report represents the demographics of deaths within the Regional Medical Examiner Office jurisdiction. The data contained therein encompasses all cases reported from January 1, 2005 to December 31, 2005. The aggregate statistics compiled herein reflect a breakdown by each of the four counties we serve, including Essex, Hudson, Passaic and Somerset are noted. This data presents social, economic and cultural habits of the population and the role of drugs, types of drugs, age groups and frequency, as well as violent deaths according to modality pattern and frequency, and their association with drugs and alcohol. Motor vehicle accidents, suicides and other accidental deaths and custody deaths are presented. Those natural deaths with which the medical examiner's office becomes involved are also included. This report also includes cases in which medical examiner forensic pathologists testified in court in each of the various counties. This report is part of a statewide system, which attempts to present data to those agencies which require this information ranging from health care, occupational and traffic safety, consumer safety, child health and welfare to name a few. We are fortunate to have a professional, dedicated staff.

We invite critical analysis and suggestions of this report, with the hope that it will become more useful to those involved in the medico-legal investigation of death.

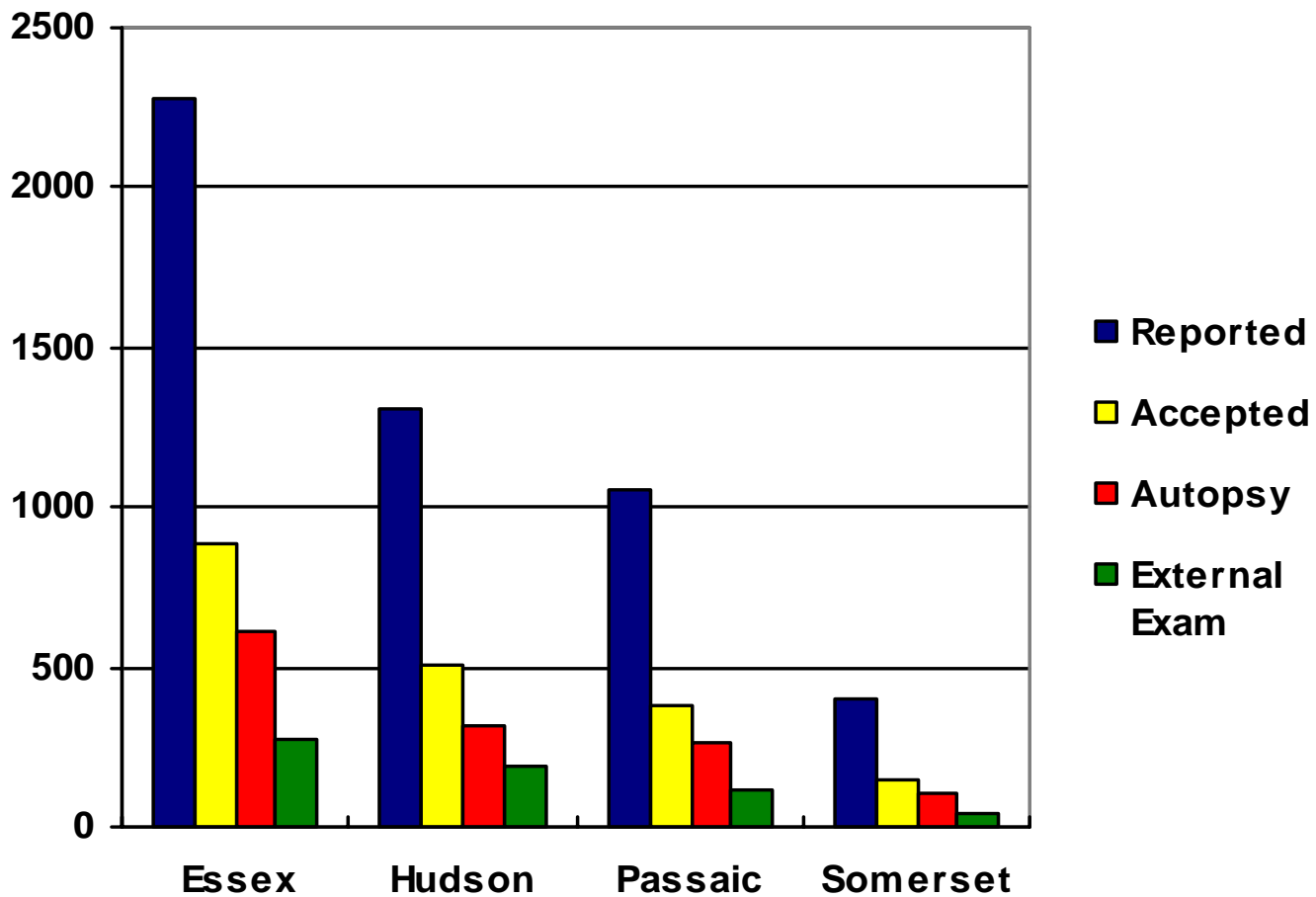
Please feel free to contact us for any further information you may find of interest or need at:

**NJ Regional Medical Examiner Office
325 Norfolk Street
Newark, NJ 07103
Phone: 973-648-7259
Fax: 973-648-3692**

**Zhongxue Hua, M.D., Ph.D., Regional Medical Examiner
Junaid R. Shaikh, M.D., Supervising Senior Medical Examiner
Nobby C. Mambo, M.D., Associate Medical Examiner
Thomas A. Blumenfeld, M.D., Assistant Medical Examiner
Alex Zhang, M.D., Assistant Medical Examiner
May Jennifer Amalot, M.D., Assistant Medical Examiner
Philip B. Larkin, Administrator, Supervising State Investigator
Mike Onofri, Business Manager
Eddy J. Lilavois, M.D., Chief Medico-legal Death Investigator
Dennis Mazone, Assistant Administrator, State Investigator**

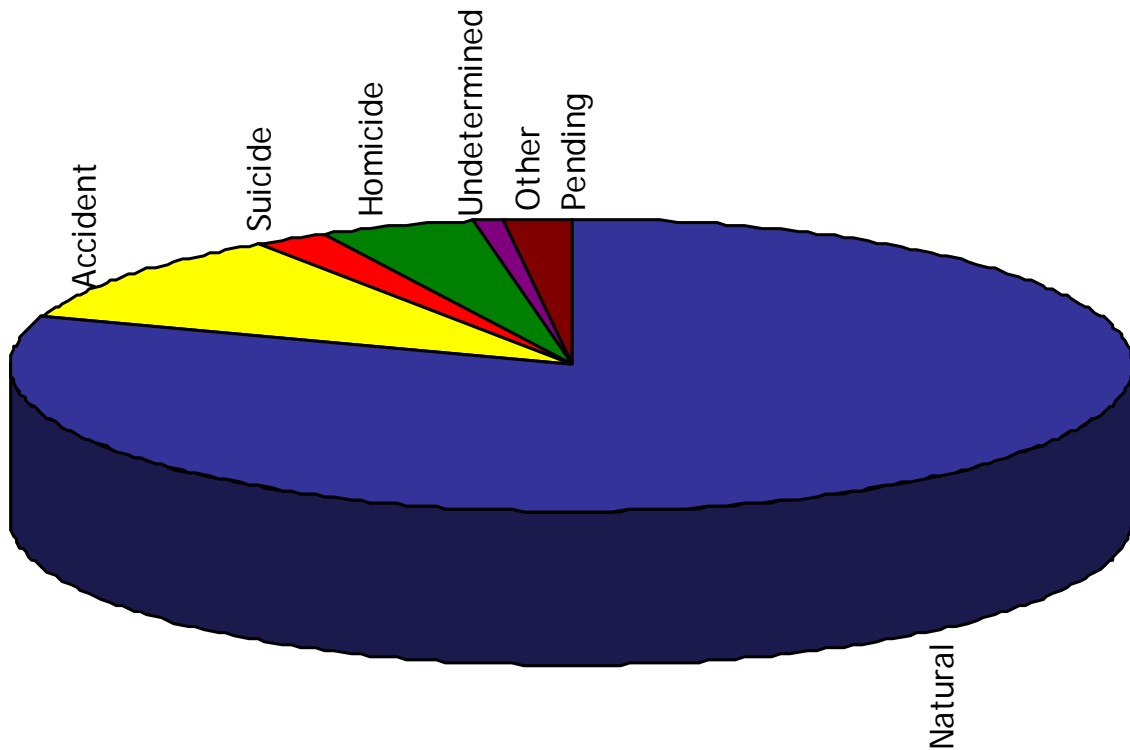
Manner of Death

Total Annual Activity



	Reported	Accepted	Autopsy	External Exam
Essex	2279	882	610	272
Hudson	1310	506	312	194
Passaic	1060	379	266	113
Somerset	405	151	104	47
Totals	5054	1918	1292	626

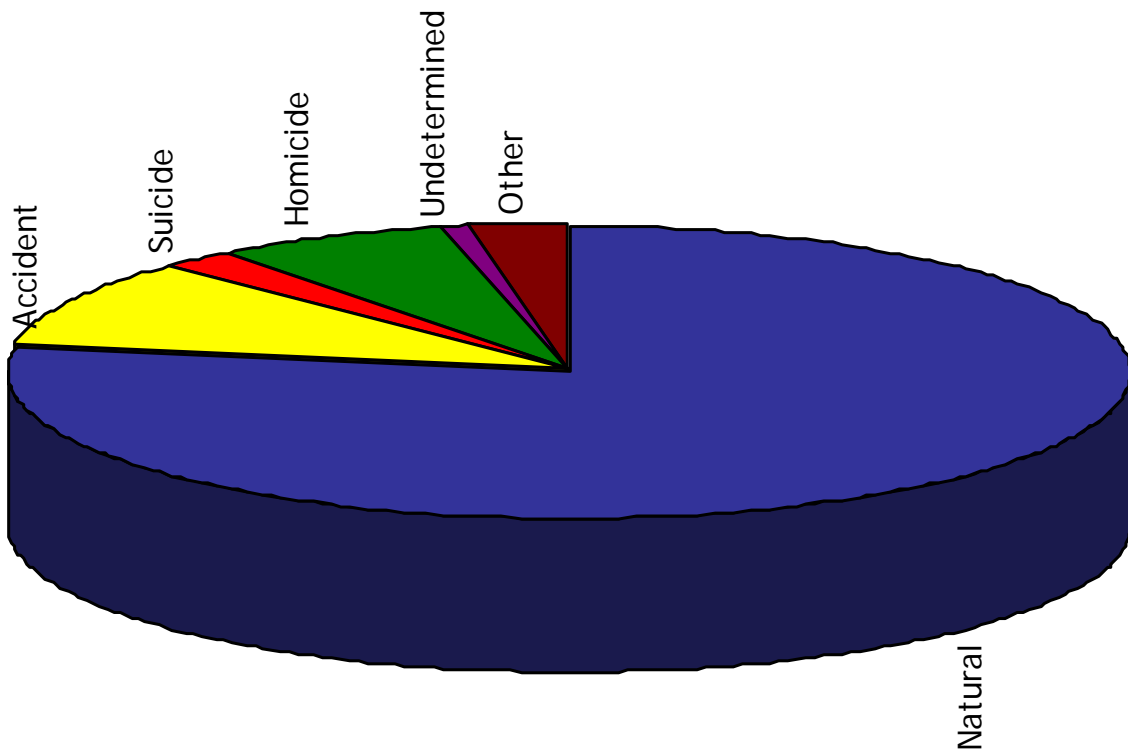
Manner of Death for the Region



	Total	Natural	Accident	Suicide	Homicide	Undetermined	Other 98					Pending
							Non Human Remains	Transfer* of Jurisdiction	Fetus	Body Parts		
Reported Cases	5054	3943	628	105	239	41	9	77	11	1		0
Percent	100	78.0	12.4	2.0	4.7	0.8	0.2	1.5	0.2	<0.1		0

* Represents cases transferred to other County Medical Examiner jurisdiction.

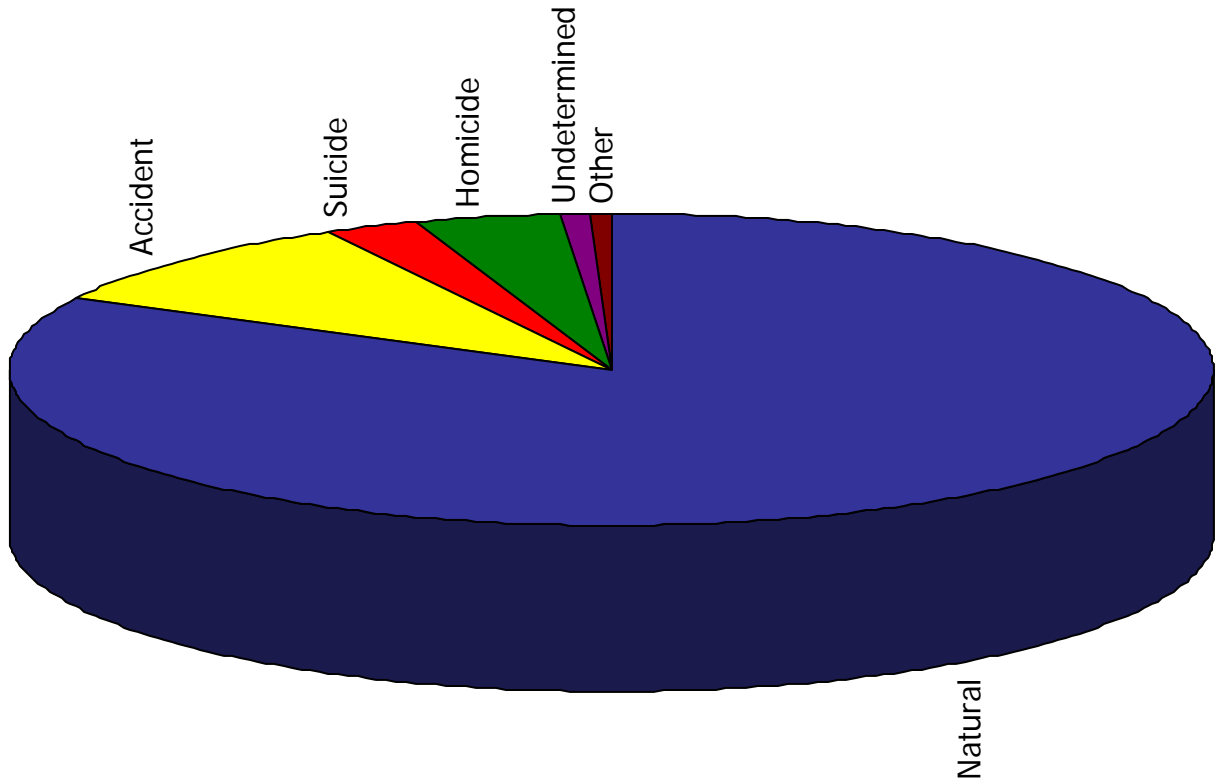
Manner of Death for Essex County



	Total	Natural	Accident	Suicide	Homicide	Undetermined	Other 68				
							Non Human Remains	Transfer* of Jurisdiction	Fetus	Body Parts	Pending
Reported Cases	2279	1704	297	35	156	19	4	58	6	0	0
Percent	100	74.8	13.0	1.5	6.8	0.8	0.2	2.5	0.3	0	0

* Represents cases transferred to other County Medical Examiner jurisdiction.

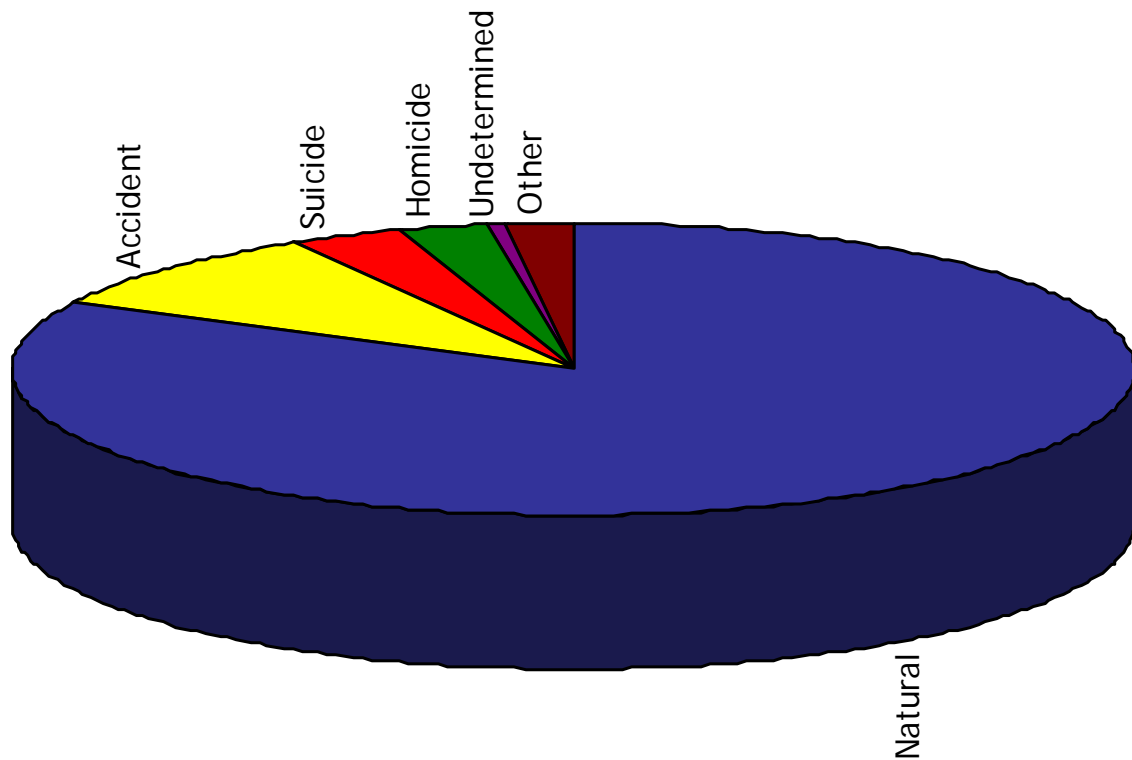
Manner of Death for Hudson County



	Total	Natural	Accident	Suicide	Homicide	Undetermined	Other				
							Non Human Remains	Transfer* of Jurisdiction	Fetus	Body Parts	Pending
Reported Cases	1310	1067	143	33	50	9	3	1	3	1	0
Percent	100	81.5	10.9	2.5	3.8	0.7	0.2	<0.1	0.2	<0.1	0

* Represents cases transferred to other County Medical Examiner jurisdiction.

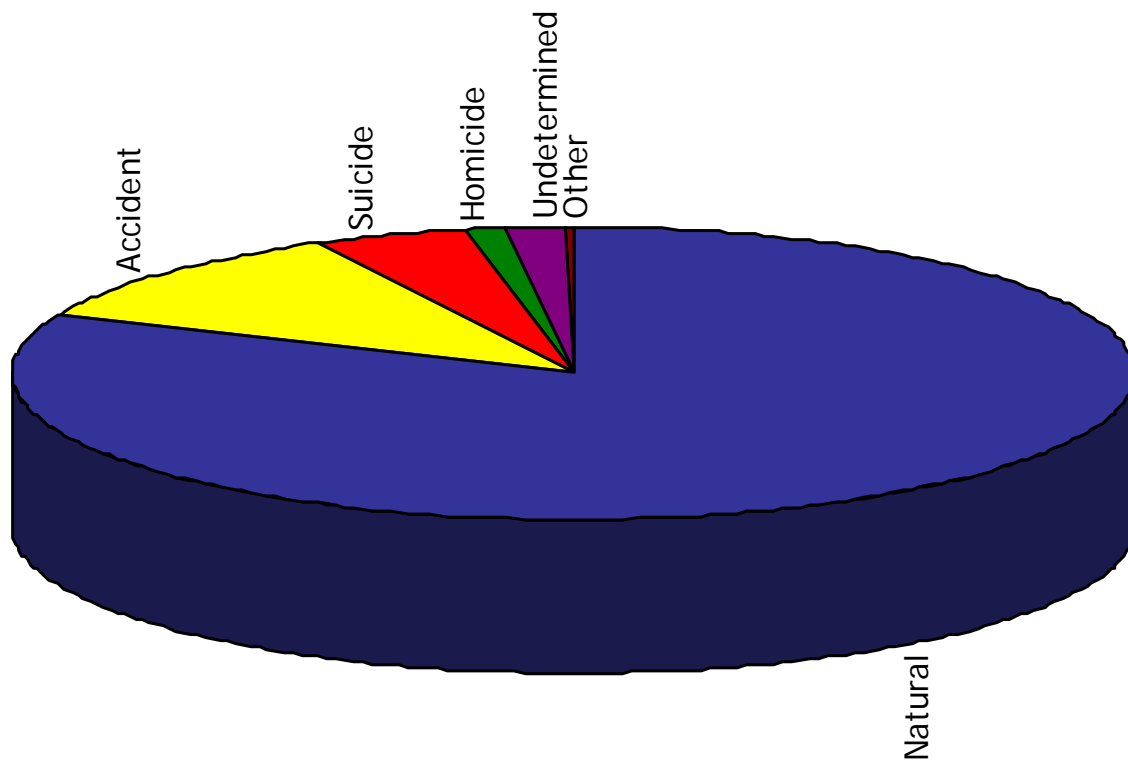
Manner of Death for Passaic County



	Total	Natural	Accident	Suicide	Homicide	Undetermined	Other				
							Non Human Remains	Transfer* of Jurisdiction	Fetus	Body Parts	Pending
Reported Cases	1060	846	138	20	29	6	2	18	1	0	0
Percent	100	79.8	13.0	1.9	2.7	0.6	0.2	1.7	<0.1	0	0

* Represents cases transferred to other County Medical Examiner jurisdiction.

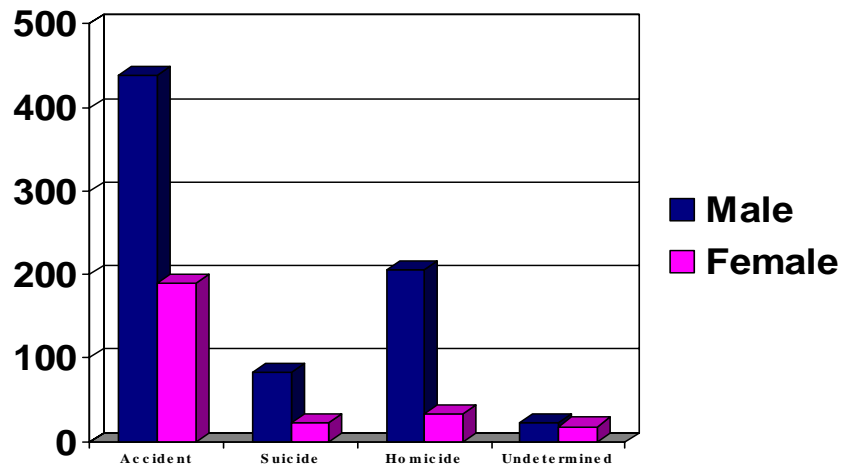
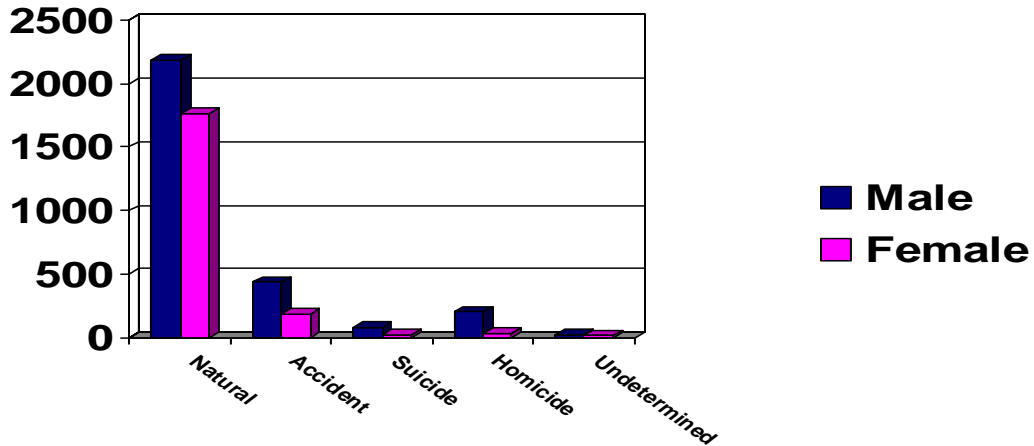
Manner of Death for Somerset County



	Total	Natural	Accident	Suicide	Homicide	Undetermined	Other				
							Non Human Remains	Transfer* of Jurisdiction	Fetus	Body Parts	Pending
Reported Cases	405	326	50	17	4	7	0	0	1	0	0
Percent	100	80.5	12.3	4.2	1.0	1.7	0	0	0.2	0	0

* Represents cases transferred to other County Medical Examiner jurisdiction.

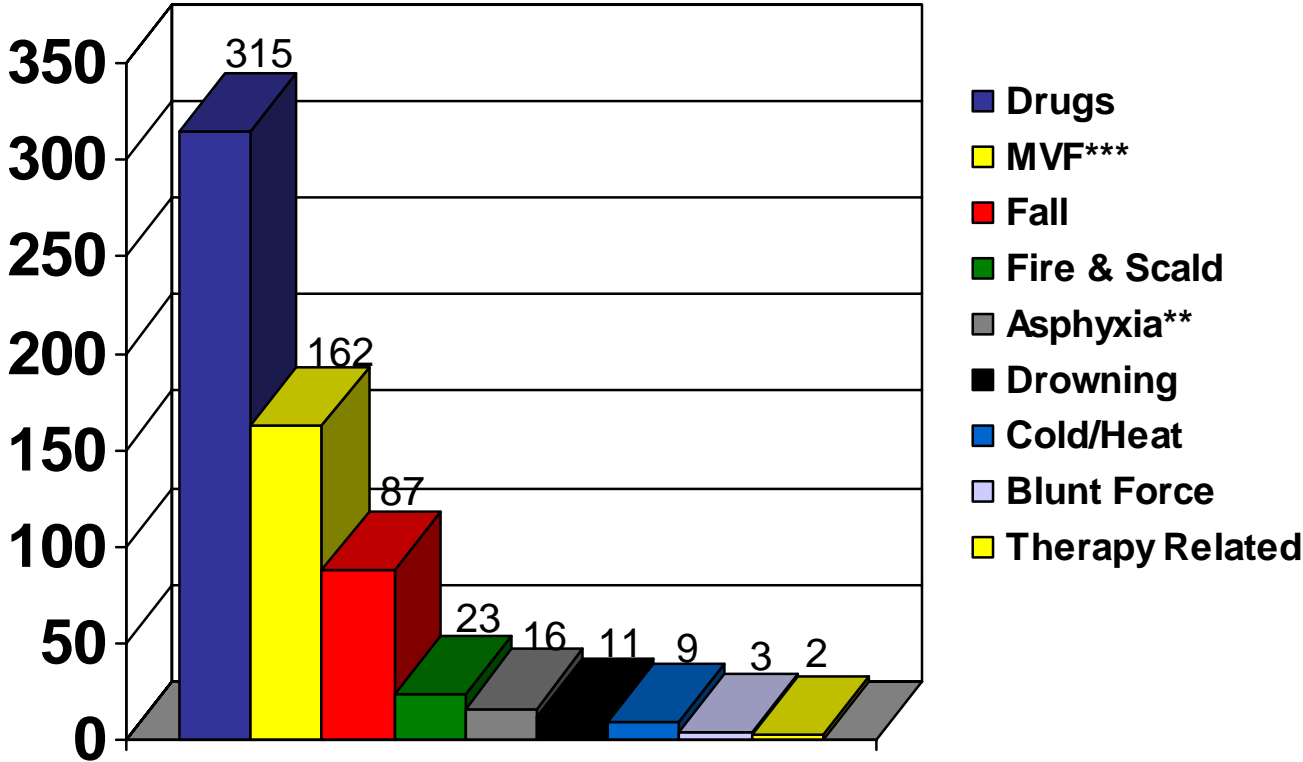
Manner of Death for the Region by Gender



	Male	Female
Natural	2183	1760
Accident	439	189
Suicide	83	22
Homicide	206	33
Undetermined	22	18

Accidental Death

Accidents by Category for the Region



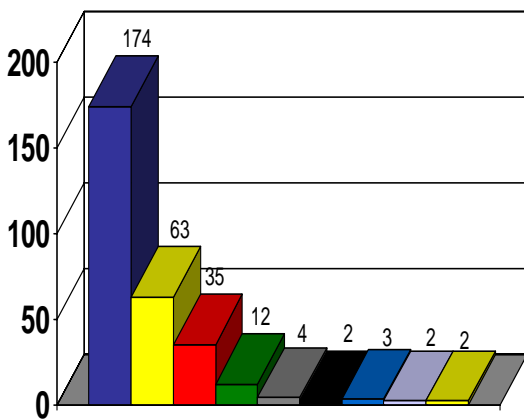
	Total	Drugs & Alcohol	***MVF	Fall	Fire & Scald	Asphyxia**	Drowning	Cold/Heat	Blunt Force	Therapy Related
Region	629	315	162	87	23	16	11	9	3	2
Essex County	297	174	63	35	12	4	2	3	2	2
Hudson County	144	63	37	25	5	5	4	3	1	0
Passaic County	138	65	42	20	3	1	4	3	0	0
Somerset County	50	13	20	7	3	6	1	0	0	0

**Includes Autoerotic, Positional, Choking, Traumatic, Carbon Monoxide and Suffocation.

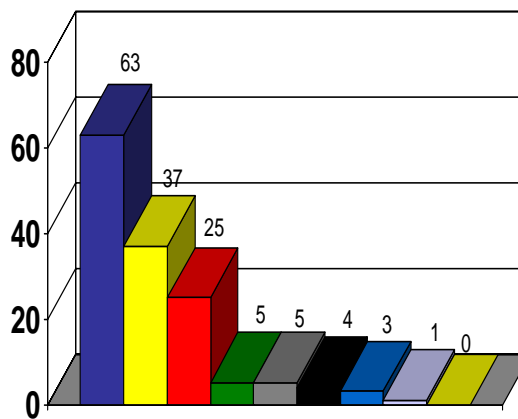
***Includes air, water and land vehicles.

Accidents by Category for Essex, Hudson, Passaic, and Somerset Counties

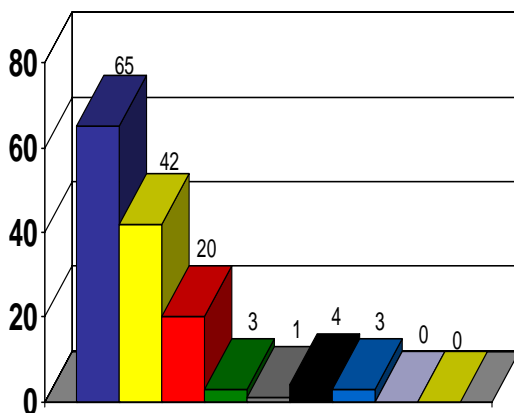
Essex County



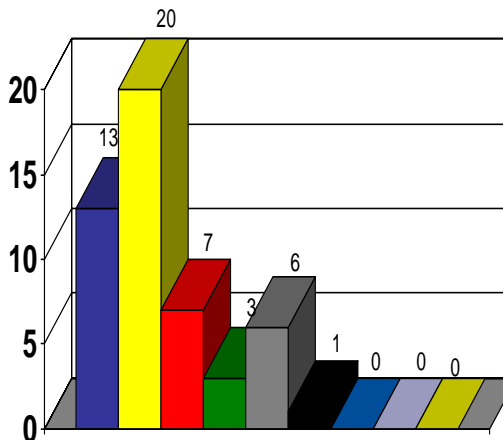
Hudson County



Passaic County



Somerset County



- Drugs
- MVF***
- Fall
- Fire & Scald
- Asphyxia**
- Drowning
- Cold/Heat
- Blunt Force
- Therapy Related

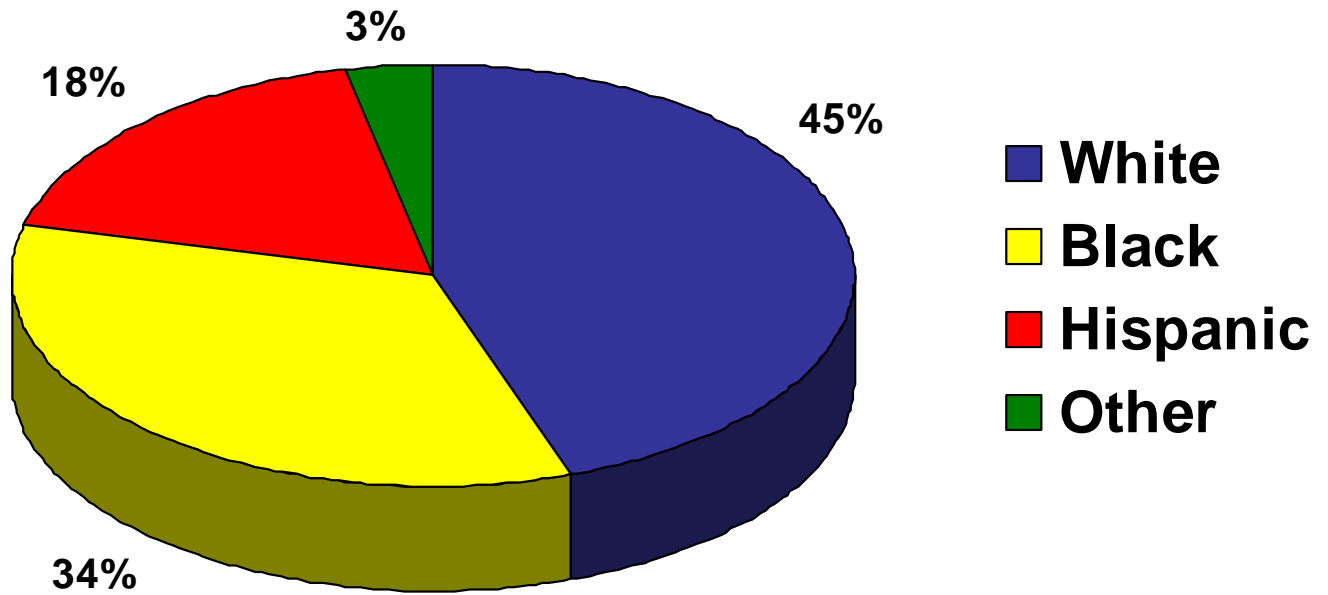
**Includes Autoerotic, Positional, Choking, Traumatic, Carbon Monoxide and Suffocation.

*** Includes air, water and land vehicles.

Accidents by Age and Gender for the Region, Essex, Hudson, Passaic, and Somerset Counties

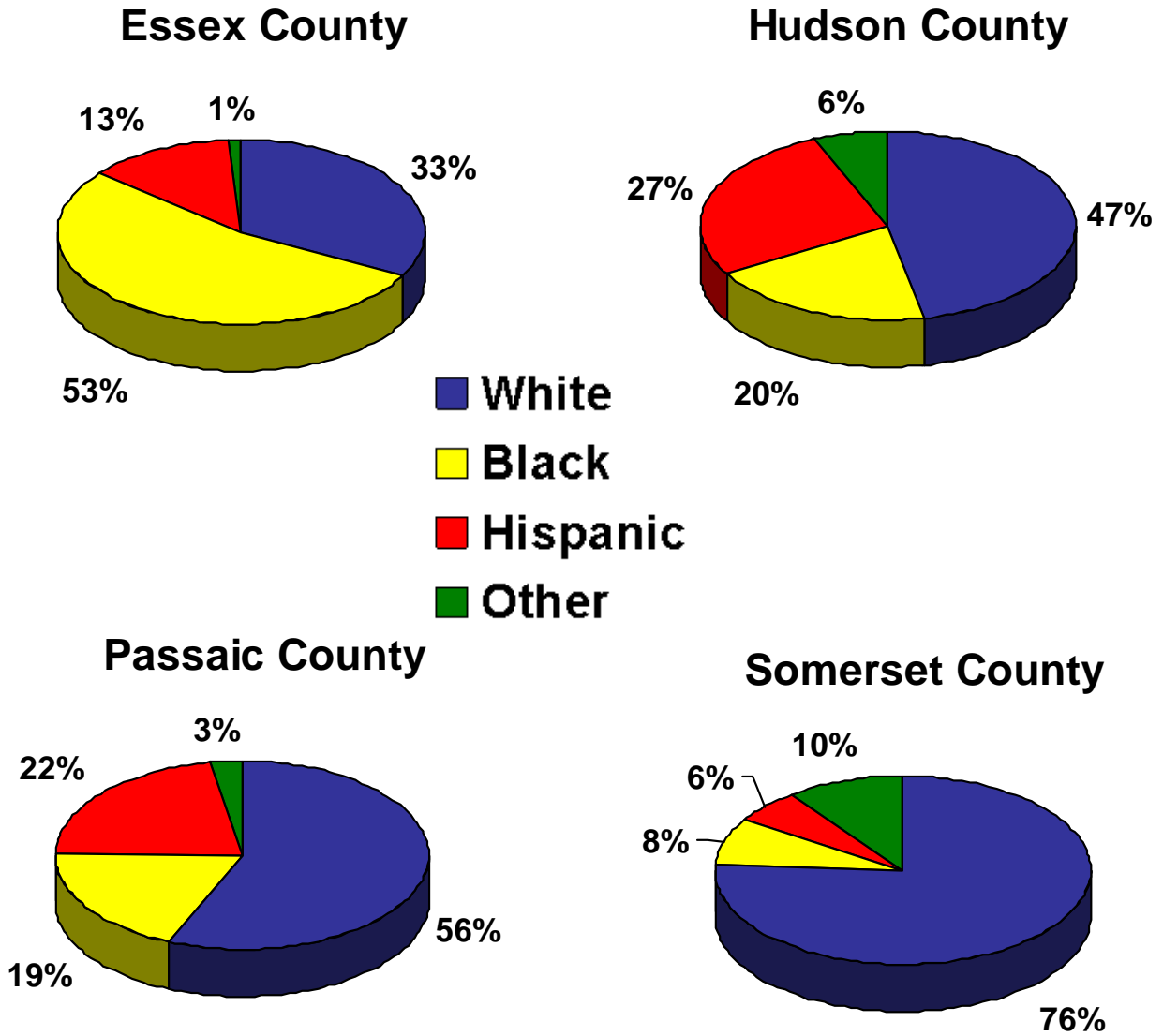
	Region		Essex County		Hudson County		Passaic County		Somerset County	
Total	628		297		143		138		50	
	M	F	M	F	M	F	M	F	M	F
<1	0	4	0	1	0	3	0	0	0	0
1 – 9	3	4	2	2	0	1	1	1	0	0
10 – 19	10	8	4	3	5	4	0	1	1	0
20 – 29	57	18	30	7	8	2	14	6	5	3
30 – 39	81	36	33	16	21	7	21	12	6	1
40 – 49	110	54	60	25	25	6	20	15	5	8
50 – 59	98	20	50	12	23	5	18	2	7	1
60 – 69	32	11	15	6	11	3	5	1	1	1
70 – 79	21	10	12	3	6	3	3	1	0	3
80 – 89	21	21	7	6	4	4	7	7	3	4
90 – 99	6	3	2	1	1	1	2	1	1	0
Total	439	189	215	82	104	39	91	47	29	21

Accidents by Race for the Region

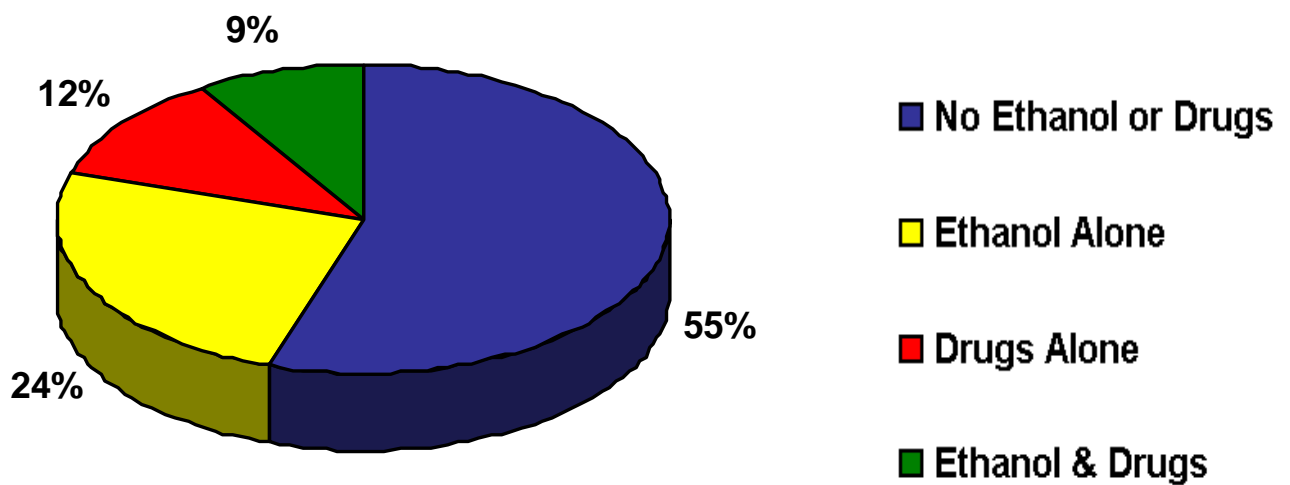


	White	Black	Hispanic	Other
Region	280	216	111	21
Essex County	97	158	39	3
Hudson County	67	28	39	9
Passaic County	78	26	30	4
Somerset County	38	4	3	5

Accidents by Race for Essex, Hudson, Passaic, and Somerset Counties



Vehicular Fatalities* (Car, Truck, Van, Bus, Train, Bicycle, Motorcycle, Airplane) and Positive Toxicology for the Region



No Ethanol or Drugs	Ethanol Alone	Drugs Alone	Ethanol & Drugs
81	36	17	13

NOTE: 147 of 162 had Toxicology done.

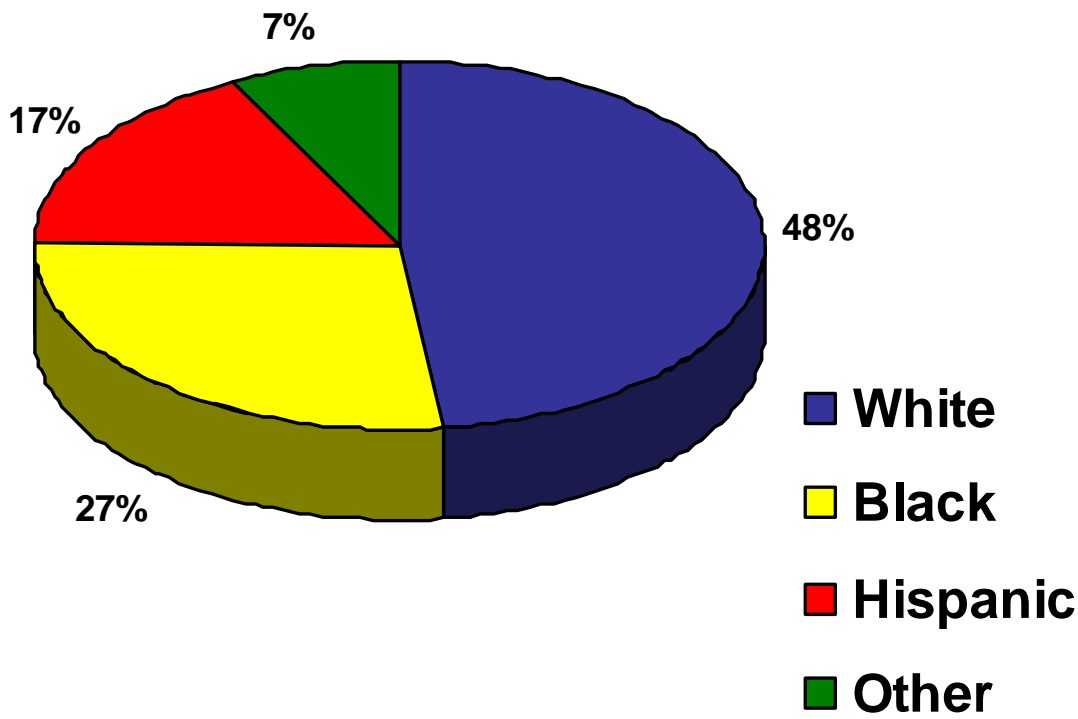
* Includes driver, passenger & pedestrian fatalities.

Vehicular Fatalities* by Age and Gender

	Region		Essex County		Hudson County		Passaic County		Somerset County	
Total	162		63		37		42		20	
	M	F	M	F	M	F	M	F	M	F
<1	0	0	0	0	0	0	0	0	0	0
1 – 9	1	3	0	1	0	1	1	1	0	0
10 – 19	8	6	3	2	4	3	0	1	1	0
20 – 29	22	6	9	3	3	0	7	3	3	0
30 – 39	21	6	10	2	5	0	3	3	3	1
40 – 49	9	14	3	3	2	1	3	4	1	6
50 – 59	22	7	9	2	5	4	6	1	2	0
60 – 69	7	4	4	3	1	1	1	0	1	0
70 – 79	9	4	5	2	3	1	1	0	0	1
80 – 89	5	7	0	2	1	1	4	3	0	1
90 – 99	0	1	0	0	0	1	0	0	0	0
Total	104	58	43	20	24	13	26	16	11	9

* Includes driver, passenger & pedestrian fatalities.

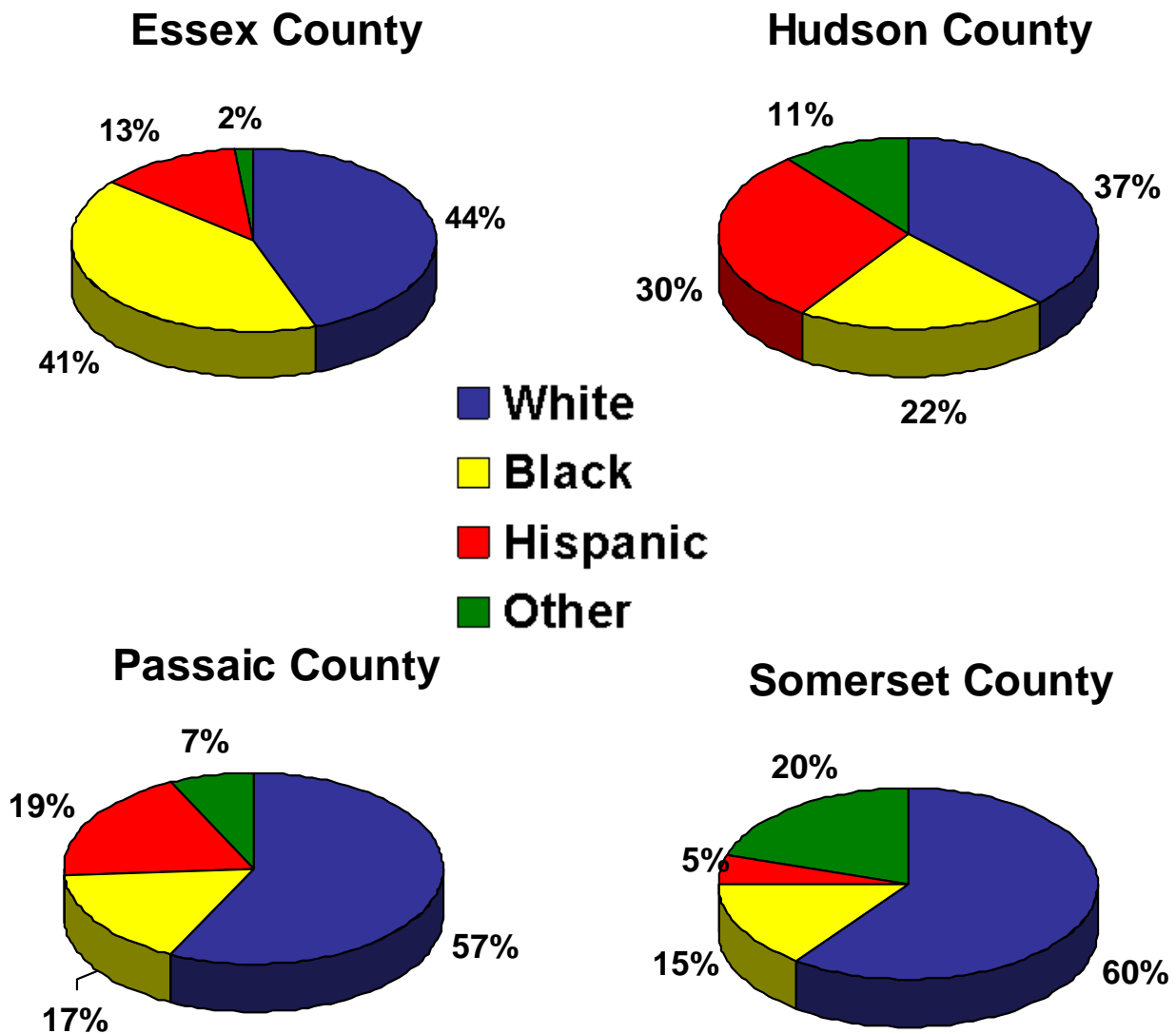
Vehicular Fatalities* by Race for the Region



	White	Black	Hispanic	Other
Region	78	44	28	12
Essex County	28	26	8	1
Hudson County	14	8	11	4
Passaic County	24	7	8	3
Somerset County	12	3	1	4

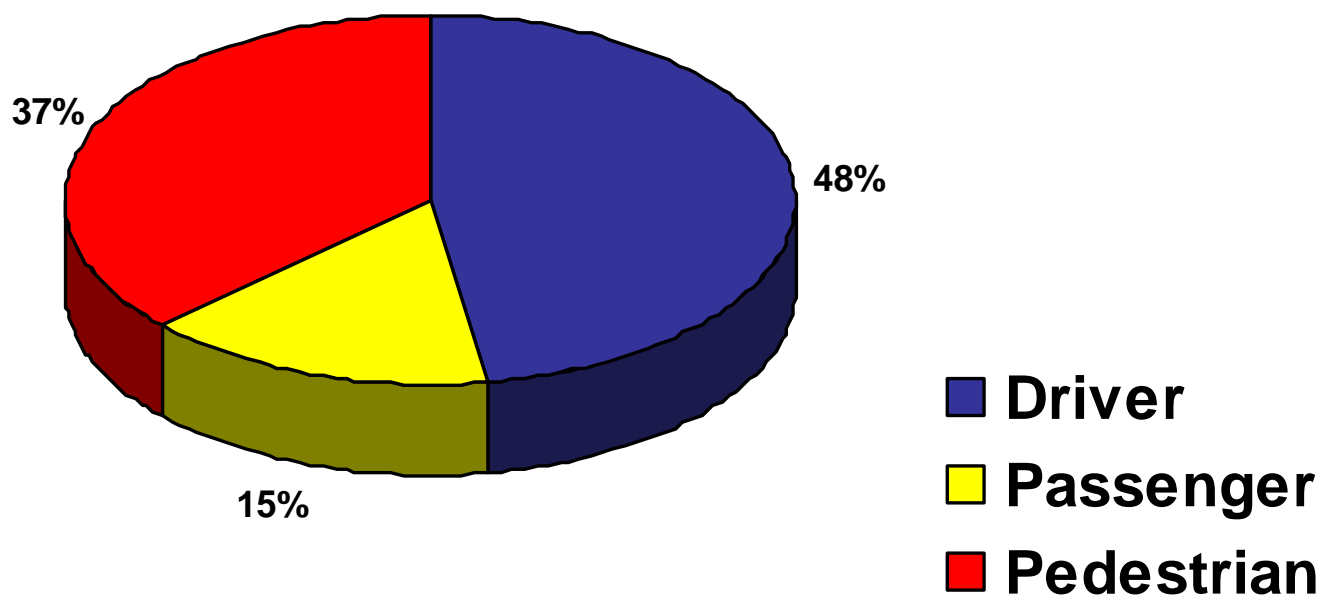
* Includes driver, passenger & pedestrian fatalities.

Vehicular Fatalities* by Race for Essex, Hudson, Passaic, and Somerset Counties



* Includes driver, passenger & pedestrian fatalities.

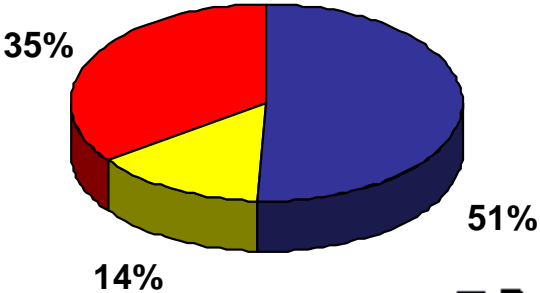
Vehicular Fatalities by Driver/Passenger/Pedestrian for the Region



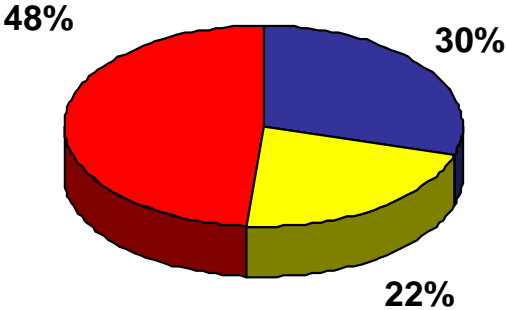
Region			Essex County			Hudson County			Passaic County			Somerset County		
Driver	Passenger	Pedestrian	Driver	Passenger	Pedestrian	Driver	Passenger	Pedestrian	Driver	Passenger	Pedestrian	Driver	Passenger	Pedestrian
77	25	60	32	9	22	11	8	18	21	7	14	13	1	6

Vehicular Fatalities by Driver/Passenger/Pedestrian for Essex, Hudson, Passaic, and Somerset Counties

Essex County

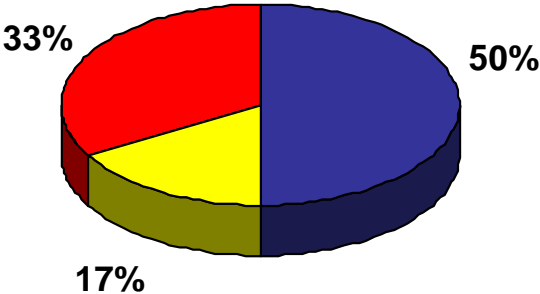


Hudson County

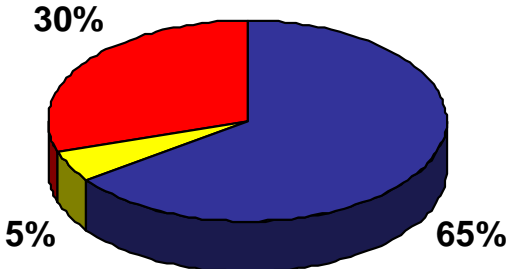


- Driver
- Passenger
- Pedestrian

Passaic County



Somerset County

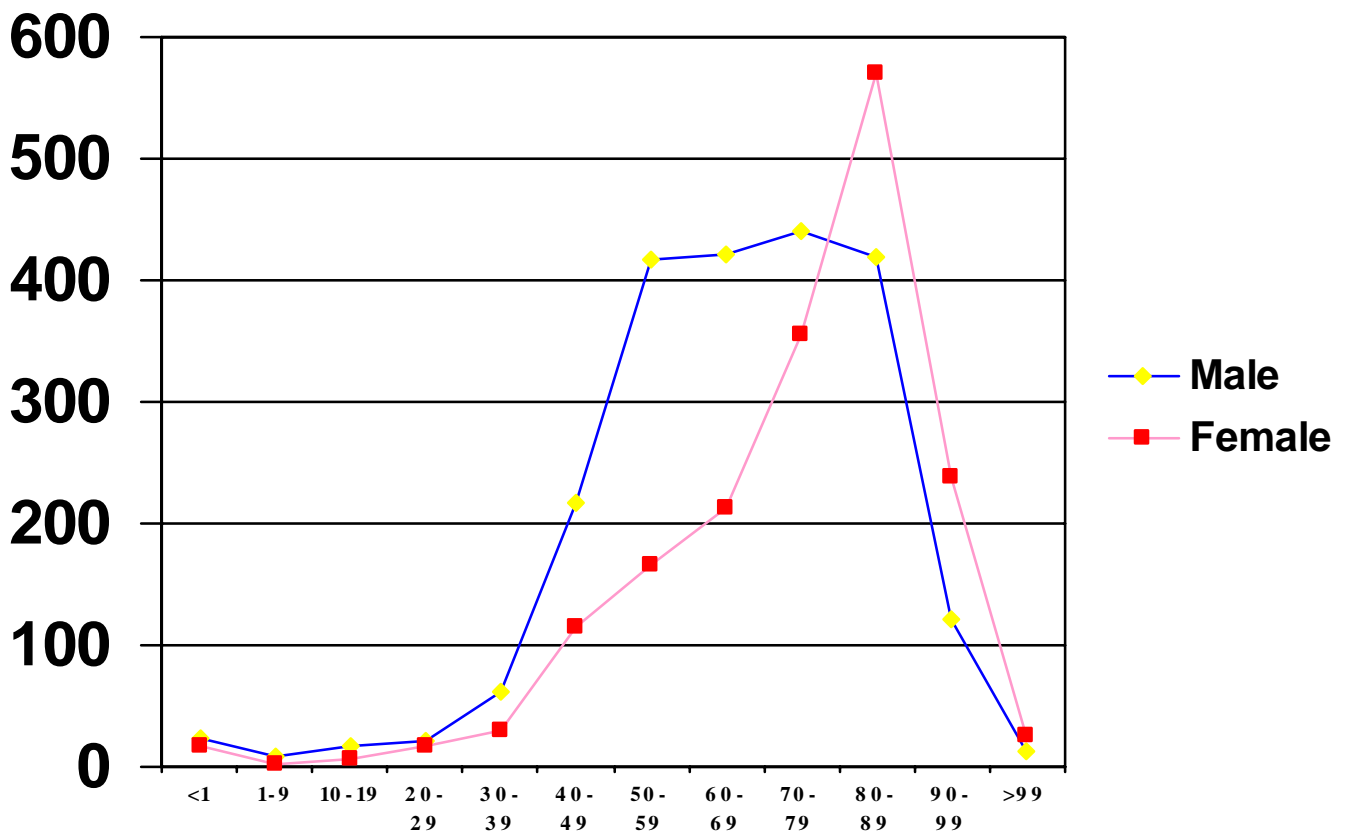


Natural*

Death

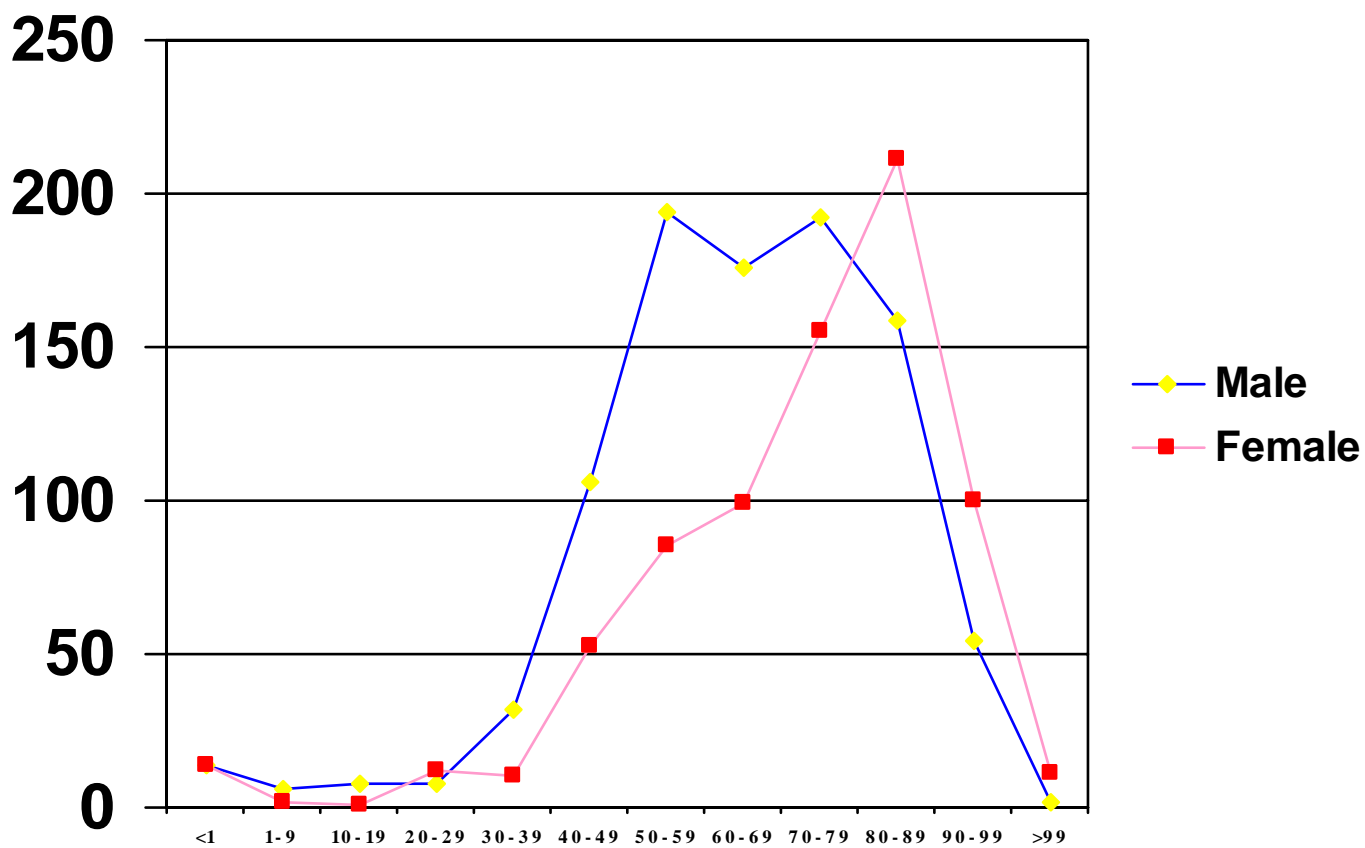
*Represents cases that fall under Medical Examiner Jurisdiction.

Naturals by Age and Gender for the Region



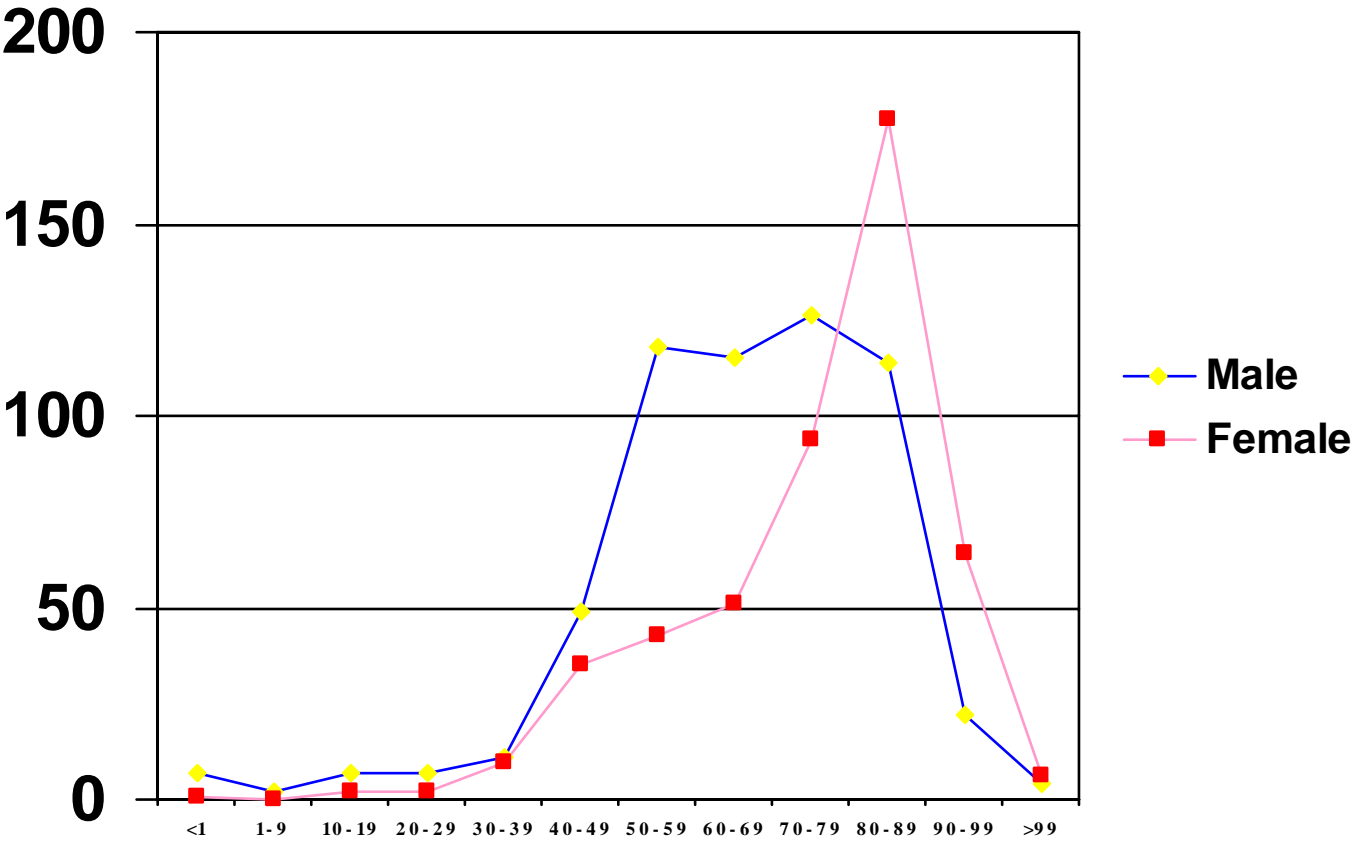
	<1	1 - 9	10 - 19	20 - 29	30 - 39	40 - 49	50 - 59	60 - 69	70 - 79	80 - 89	90 - 99	>99
Male	23	9	16	22	62	218	418	421	440	420	121	13
Female	18	3	7	17	30	114	167	213	356	571	239	25

Naturals by Age and Gender for Essex County



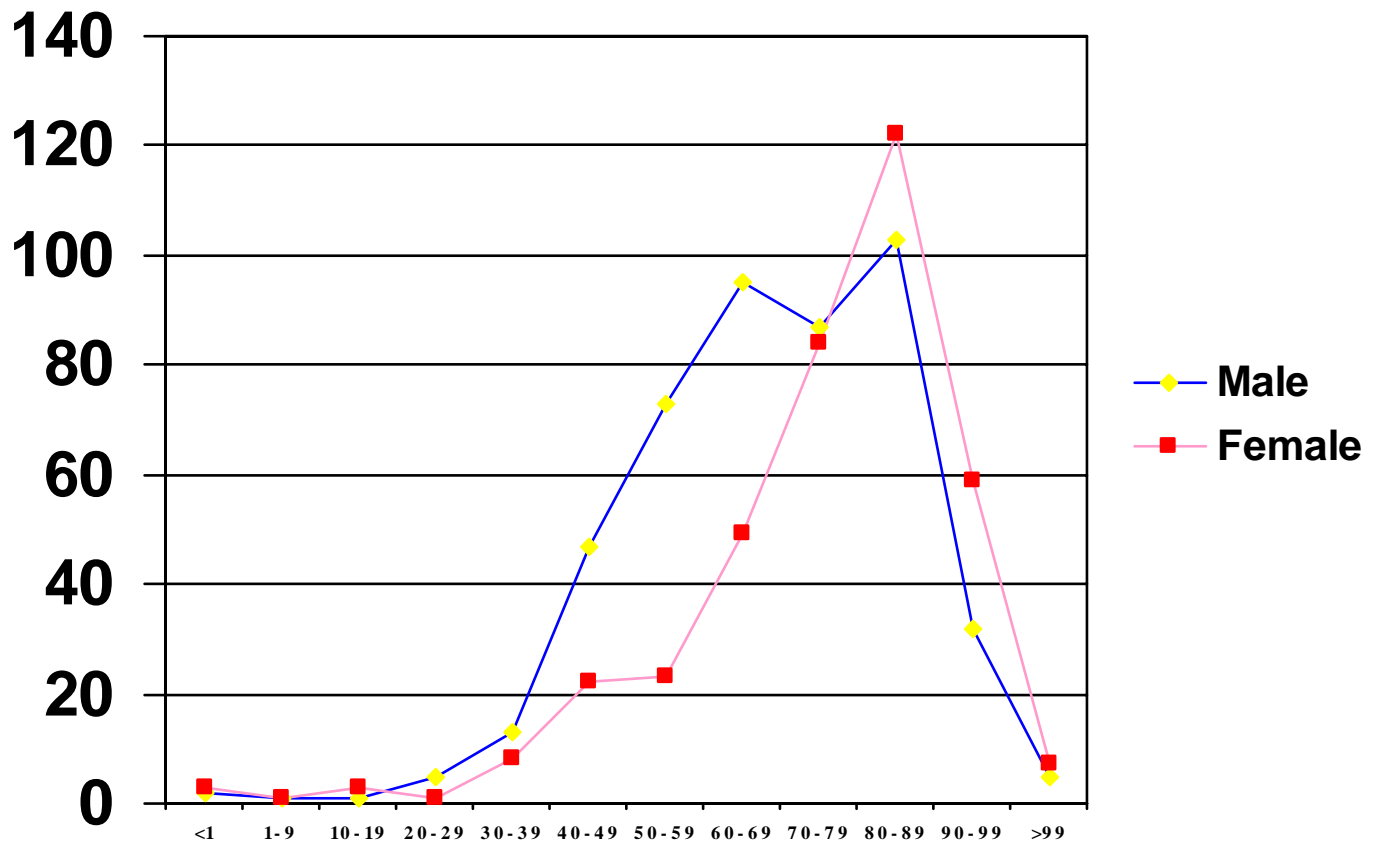
	<1	1 - 9	10 - 19	20 - 29	30 - 39	40 - 49	50 - 59	60 - 69	70 - 79	80 - 89	90 - 99	>99
Male	14	6	8	8	32	106	194	176	192	159	54	2
Female	14	2	1	12	10	53	85	99	155	211	100	11

Naturals by Age and Gender for Hudson County



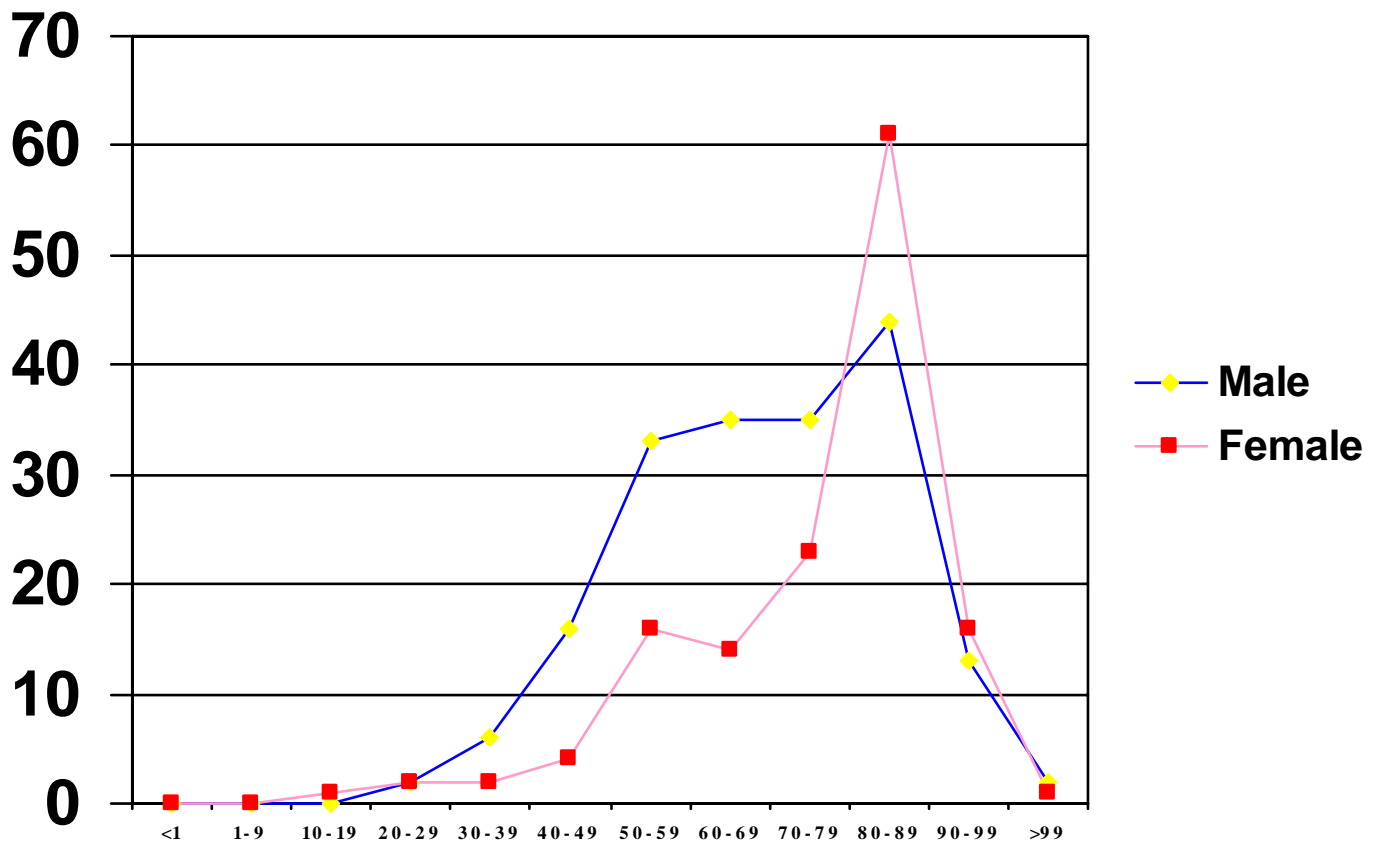
	<1	1 - 9	10 - 19	20 - 29	30 - 39	40 - 49	50 - 59	60 - 69	70 - 79	80 - 89	90 - 99	>99
Male	7	2	7	7	11	49	118	115	126	114	22	4
Female	1	0	2	2	10	35	43	51	94	177	64	6

Naturals by Age and Gender for Passaic County



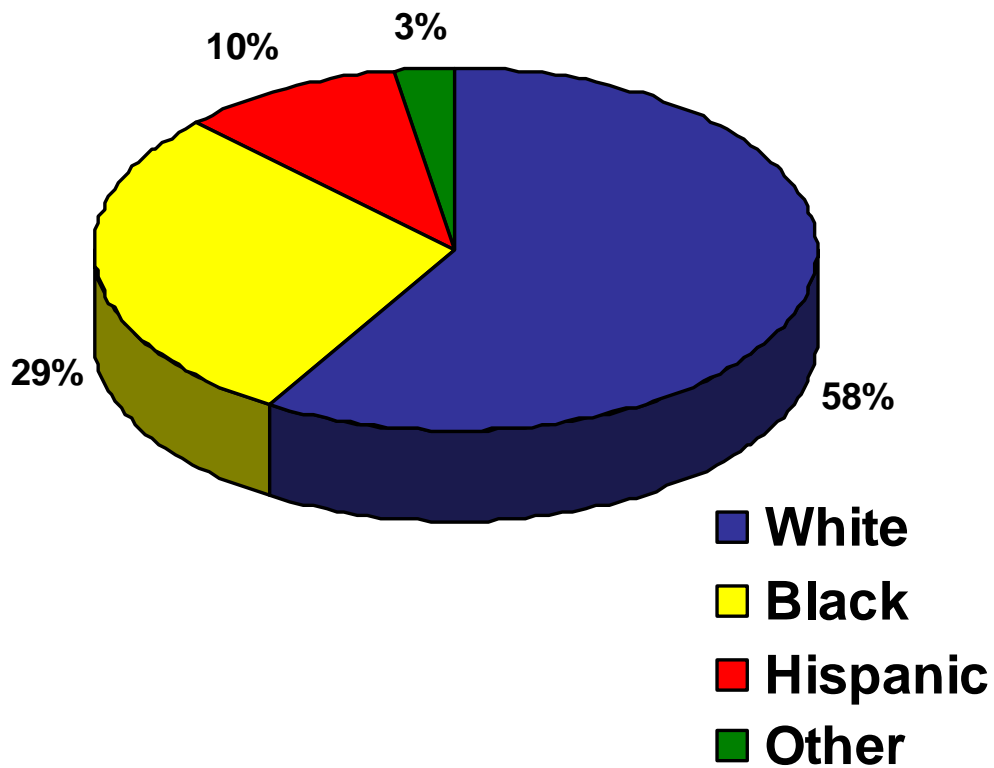
	<1	1 - 9	10 - 19	20 - 29	30 - 39	40 - 49	50 - 59	60 - 69	70 - 79	80 - 89	90 - 99	>99
Male	2	1	1	5	13	47	73	95	87	103	32	5
Female	3	1	3	1	8	22	23	49	84	122	59	7

Naturals by Age and Gender for Somerset County



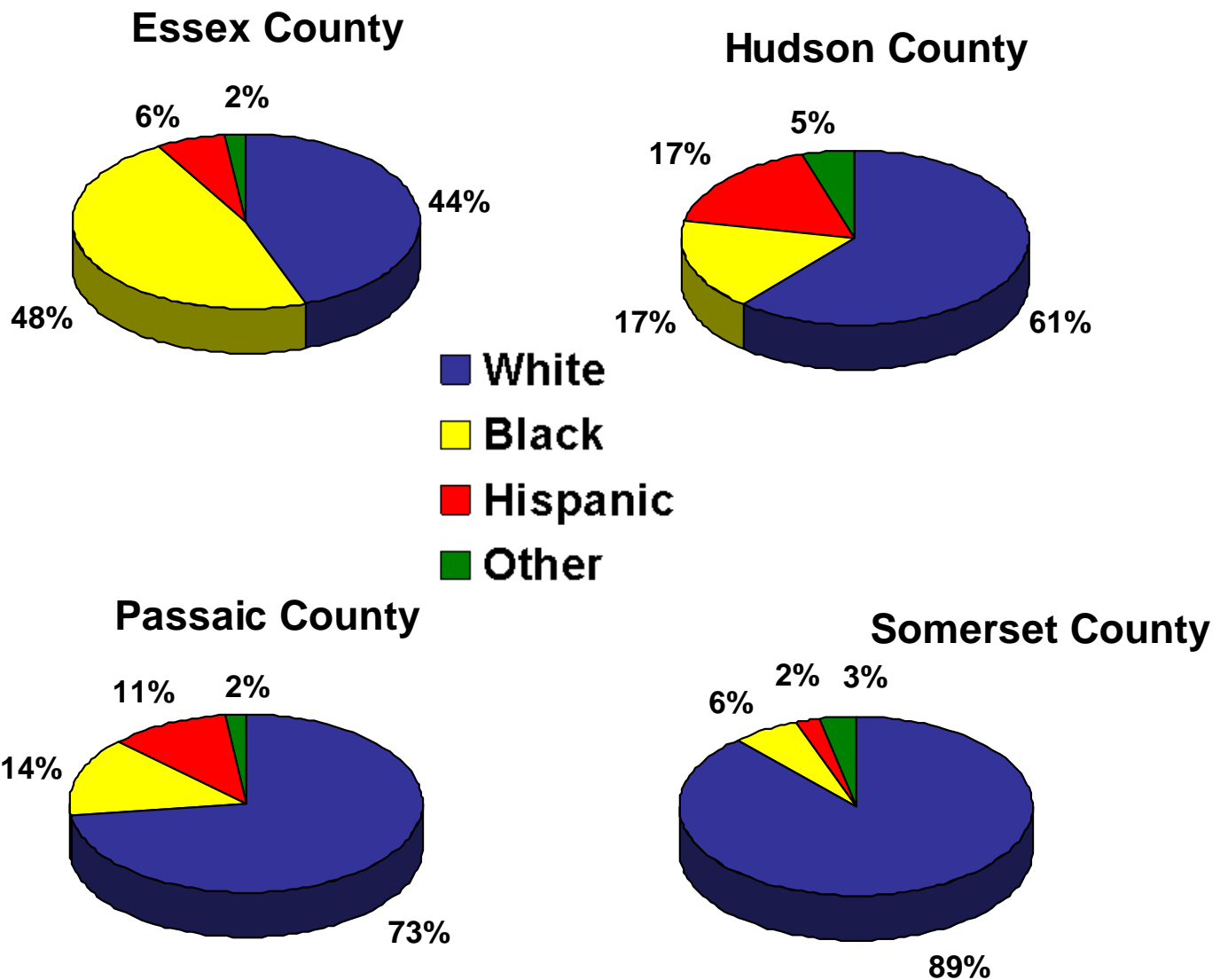
	<1	1 - 9	10 - 19	20 - 29	30 - 39	40 - 49	50 - 59	60 - 69	70 - 79	80 - 89	90 - 99	>99
Male	0	0	0	2	6	16	33	35	35	44	13	2
Female	0	0	1	2	2	4	16	14	23	61	16	1

Naturals by Race for the Region



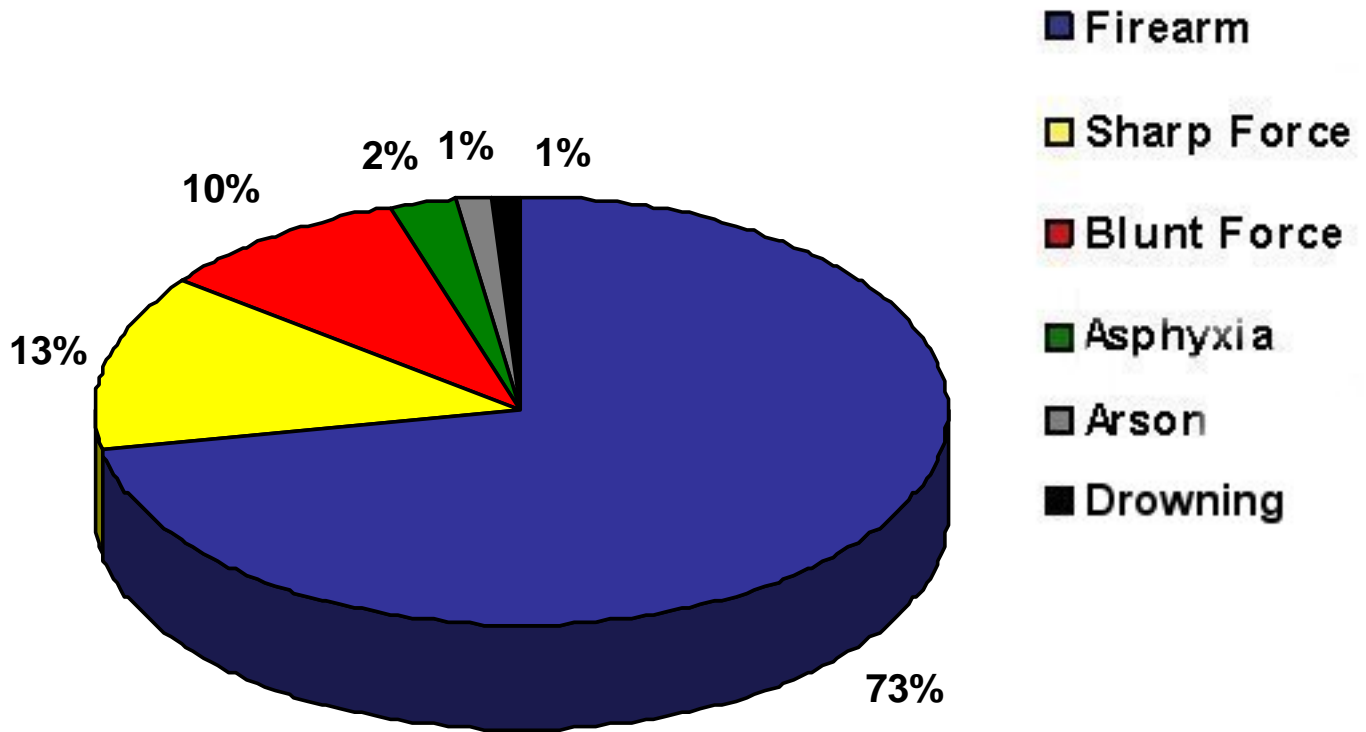
	White	Black	Hispanic	Other
Region	2312	1128	390	113
Essex County	757	805	109	33
Hudson County	651	182	181	53
Passaic County	616	121	93	16
Somerset County	288	20	7	11

Naturals by Race for Essex, Hudson, Passaic, and Somerset Counties



Homicides

Homicides by Category for the Region

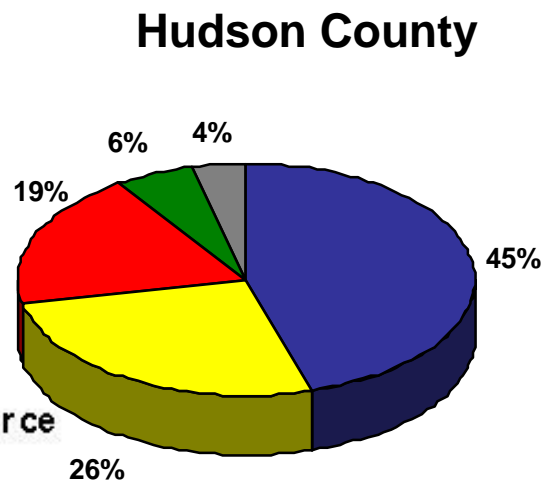
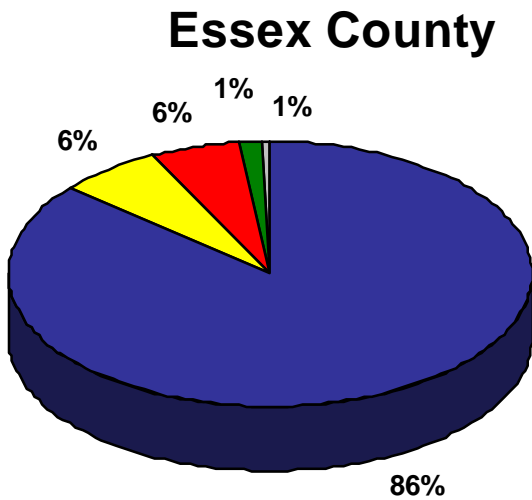


	Region	Essex County	Hudson County	Passaic County	Somerset County
Firearm	178*	137*	24*	16	1
Sharp Force	32*	10*	14*	7	1
Blunt Force	24*	9*	10*	4	1
Asphyxia	6*	2*	3*	0	1*
Arson	3	1	2	0	0
Drowning	3*	0	0	2	1*

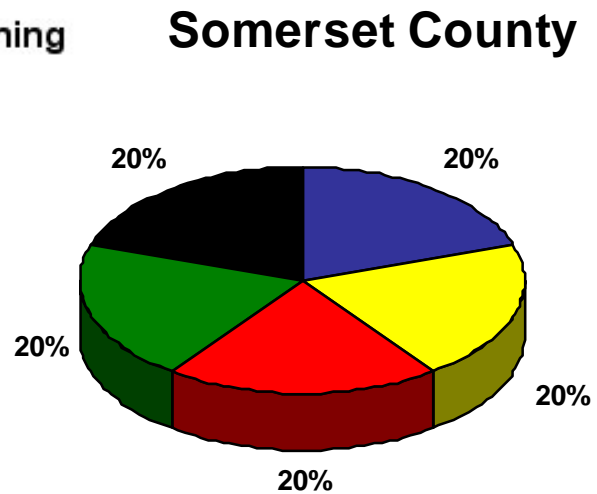
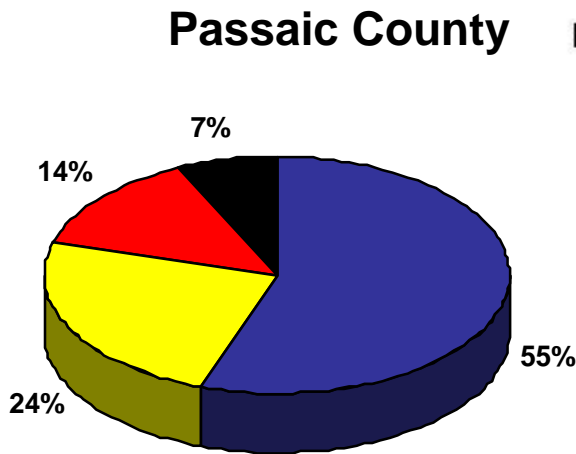
*Includes cases with multiple modalities.

**Asphyxia includes manual asphyxia and suffocation.

Homicides by Category for Essex, Hudson, Passaic, and Somerset Counties

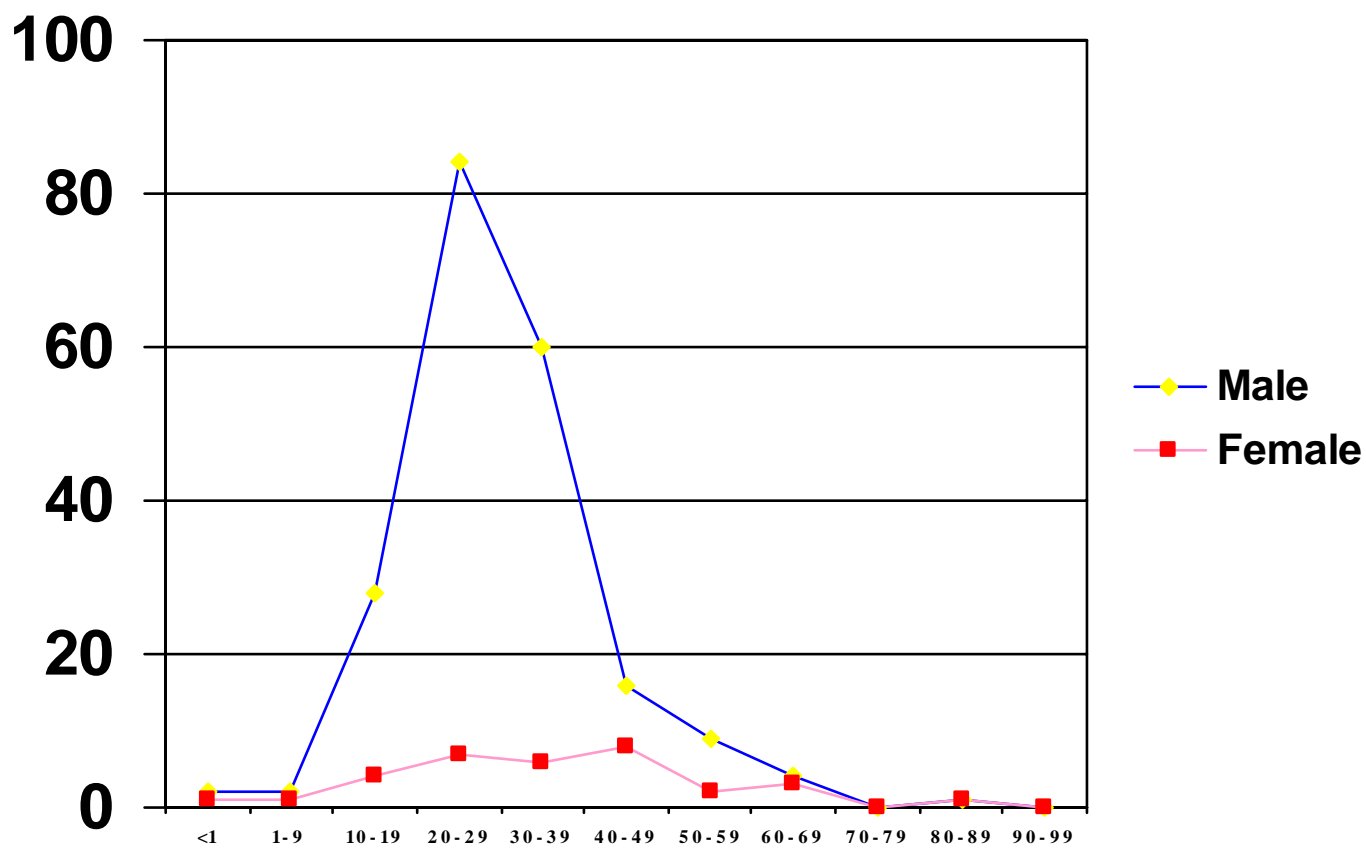


- Firearm
- Sharp Force
- Blunt Force
- Asphyxia
- Arson
- Drowning



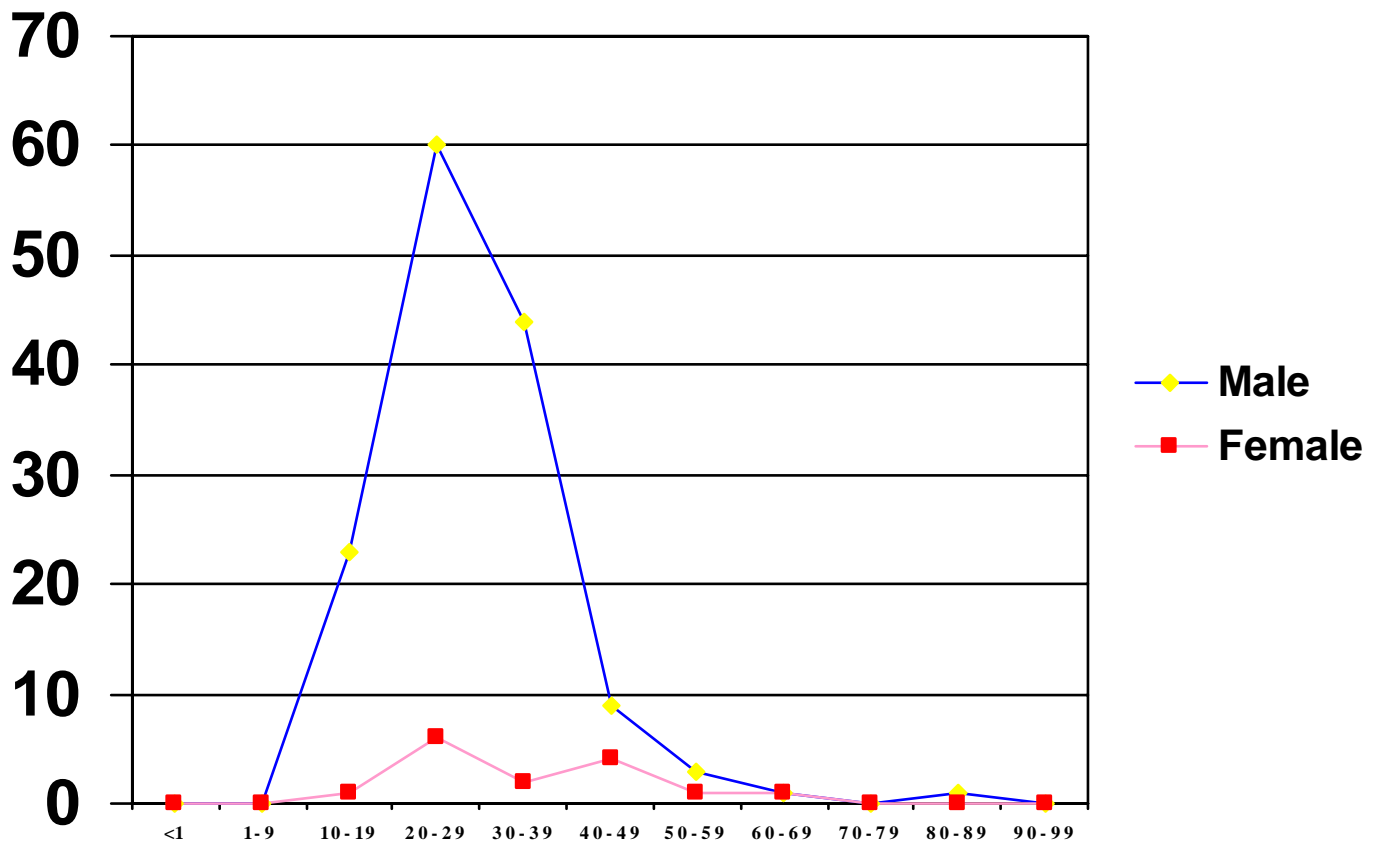
*Some cases include multiple modalities (please see chart on previous page).

Homicides by Age and Gender for the Region



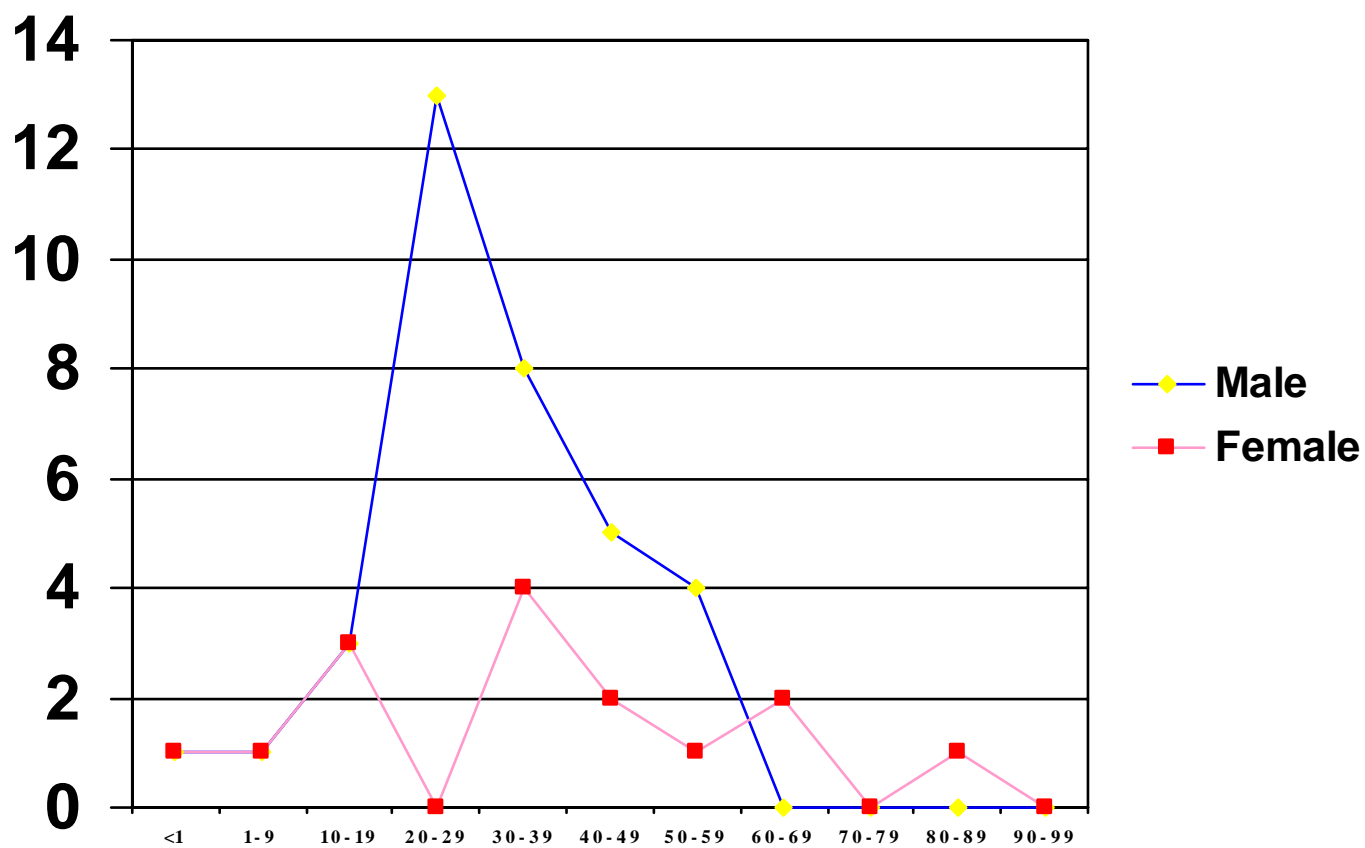
	<1	1 - 9	10 - 19	20 - 29	30 - 39	40 - 49	50 - 59	60 - 69	70 - 79	80 - 89	90 - 99
Male	2	2	28	84	60	16	9	4	0	1	0
Female	1	1	4	7	6	8	2	3	0	1	0

Homicides by Age and Gender for Essex County



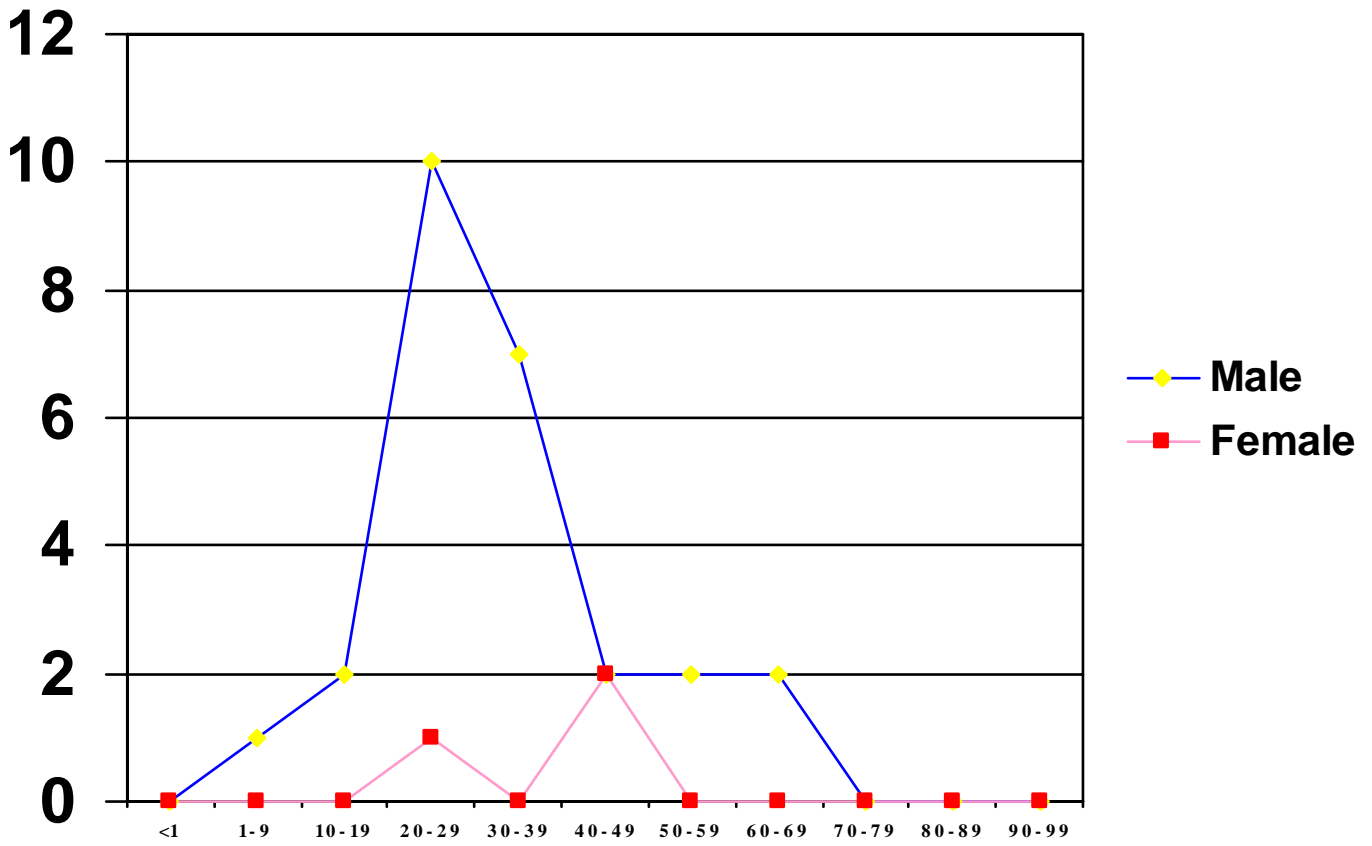
	<1	1 - 9	10 - 19	20 - 29	30 - 39	40 - 49	50 - 59	60 - 69	70 - 79	80 - 89	90 - 99
Male	0	0	23	60	44	9	3	1	0	1	0
Female	0	0	1	6	2	4	1	1	0	0	0

Homicides by Age and Gender for Hudson County



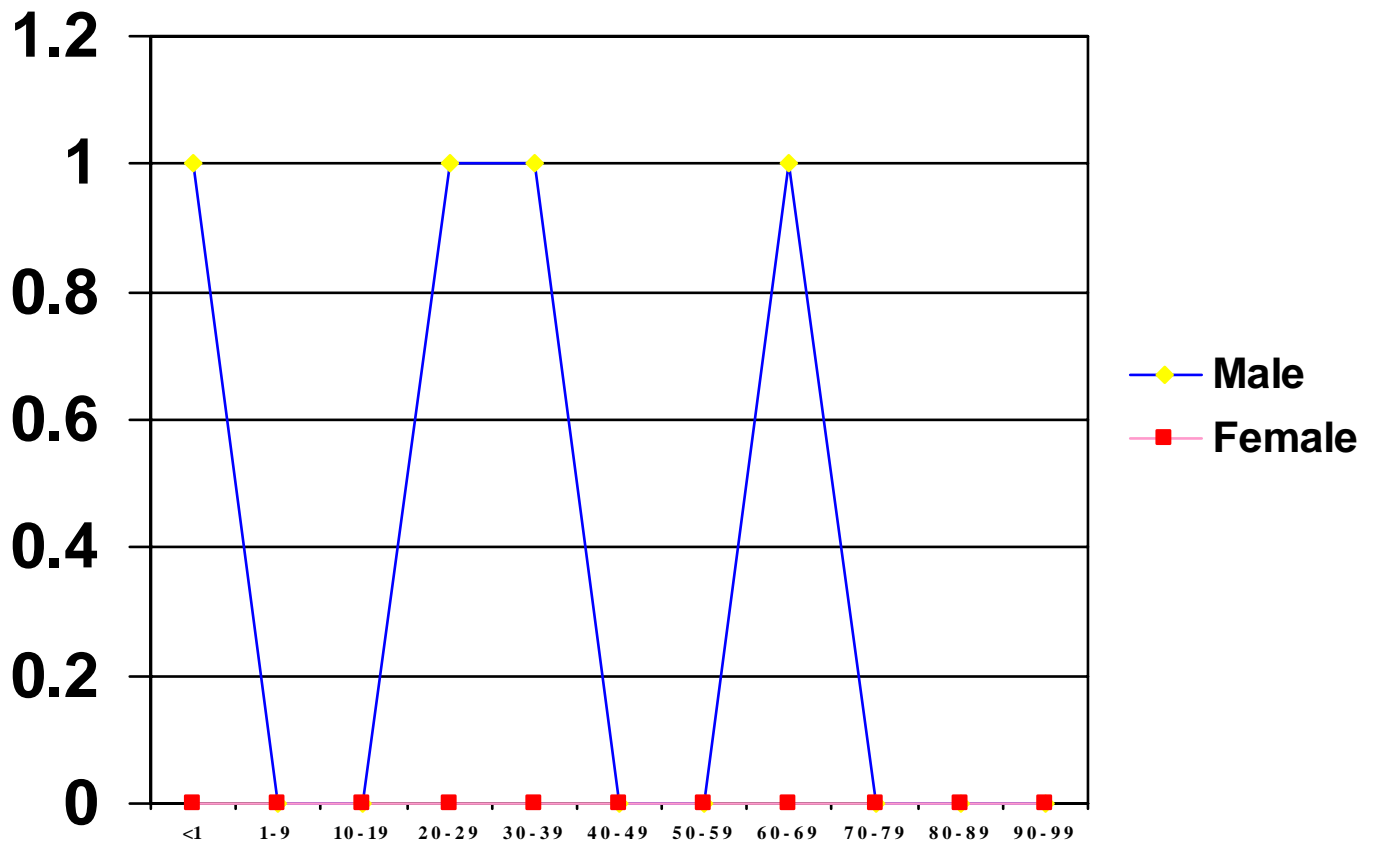
	<1	1-9	10-19	20-29	30-39	40-49	50-59	60-69	70-79	80-89	90-99
Male	1	1	3	13	8	5	4	0	0	0	0
Female	1	1	3	0	4	2	1	2	0	1	0

Homicides by Age and Gender for Passaic County



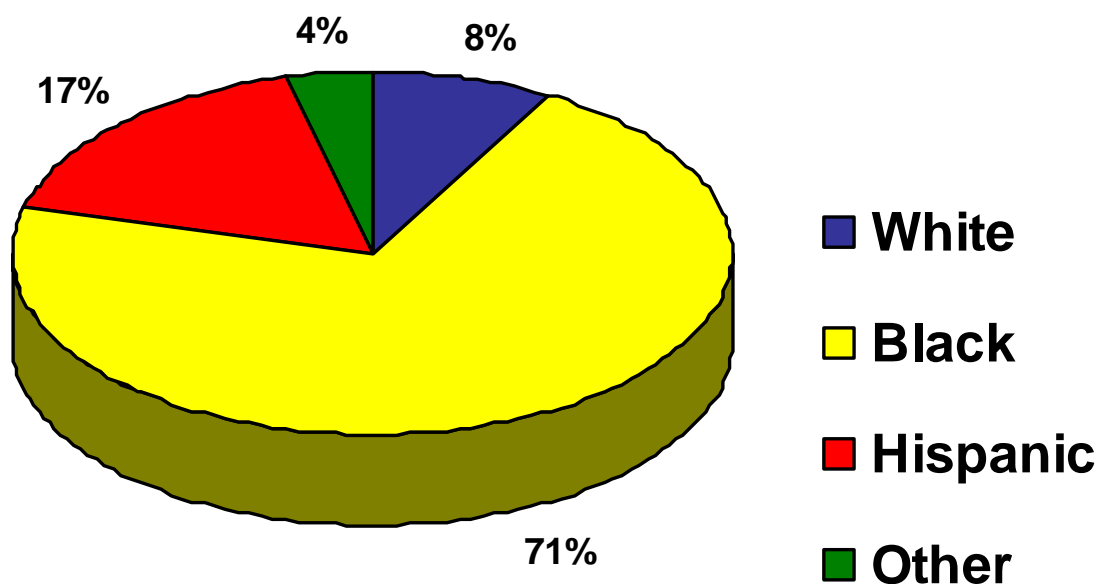
	<1	1 - 9	10 - 19	20 - 29	30 - 39	40 - 49	50 - 59	60 - 69	70 - 79	80 - 89	90 - 99
Male	0	1	2	10	7	2	2	2	0	0	0
Female	0	0	0	1	0	2	0	0	0	0	0

Homicides by Age and Gender for Somerset County



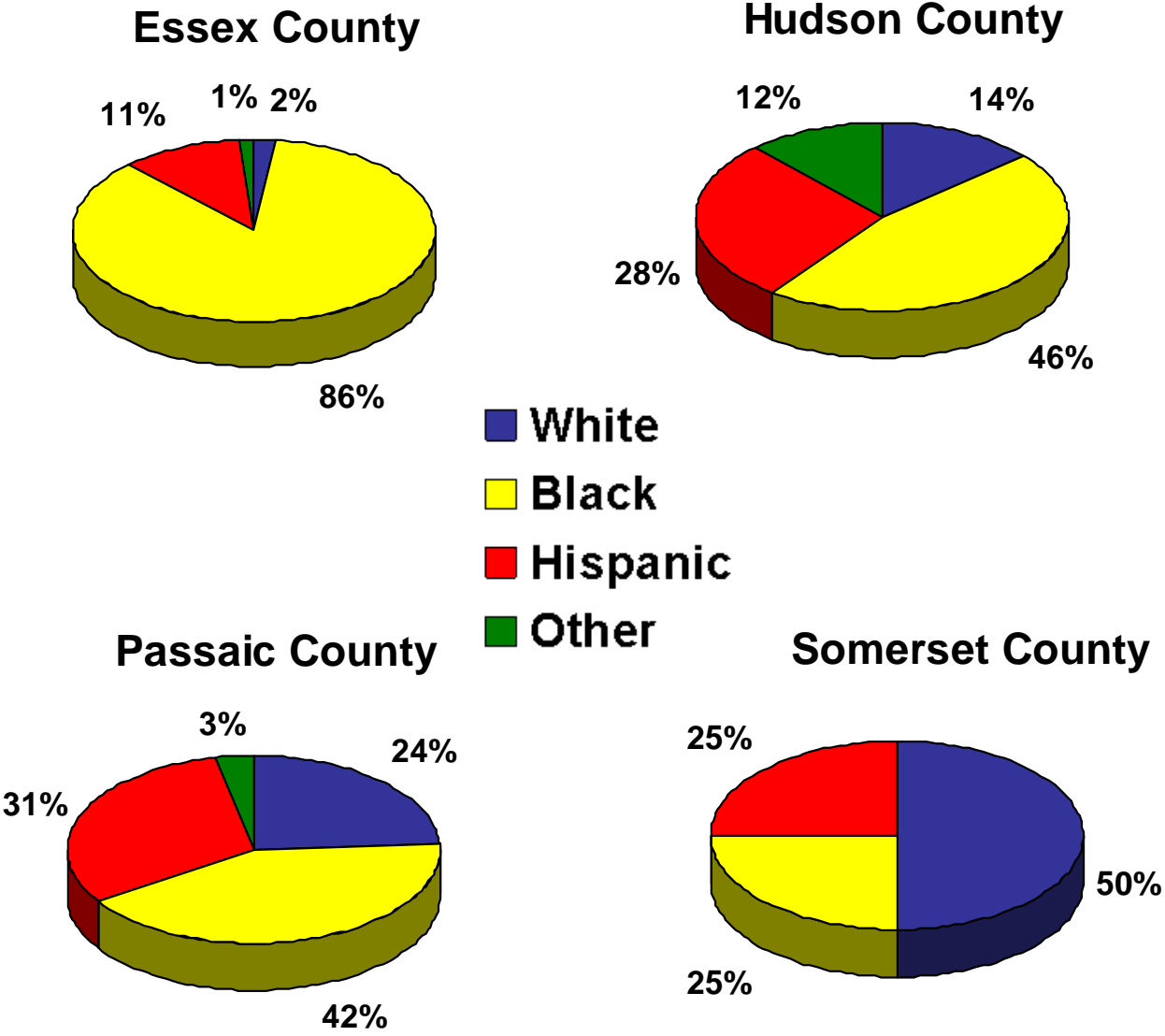
	<1	1 - 9	10 - 19	20 - 29	30 - 39	40 - 49	50 - 59	60 - 69	70 - 79	80 - 89	90 - 99
Male	1	0	0	1	1	0	0	1	0	0	0
Female	0	0	0	0	0	0	0	0	0	0	0

Homicides by Race for the Region

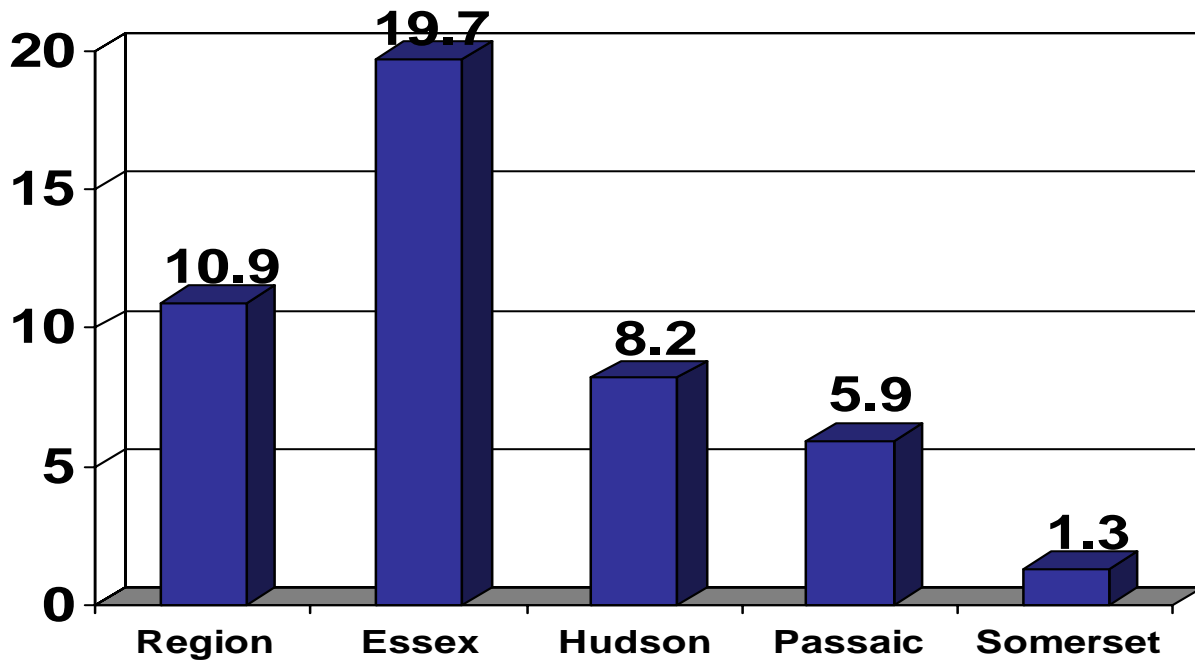


	White	Black	Hispanic	Other
Region	19	170	41	9
Essex County	3	134	17	2
Hudson County	7	23	14	6
Passaic County	7	12	9	1
Somerset County	2	1	1	0

Homicides by Race for Essex, Hudson, Passaic, and Somerset Counties



Homicide Rate



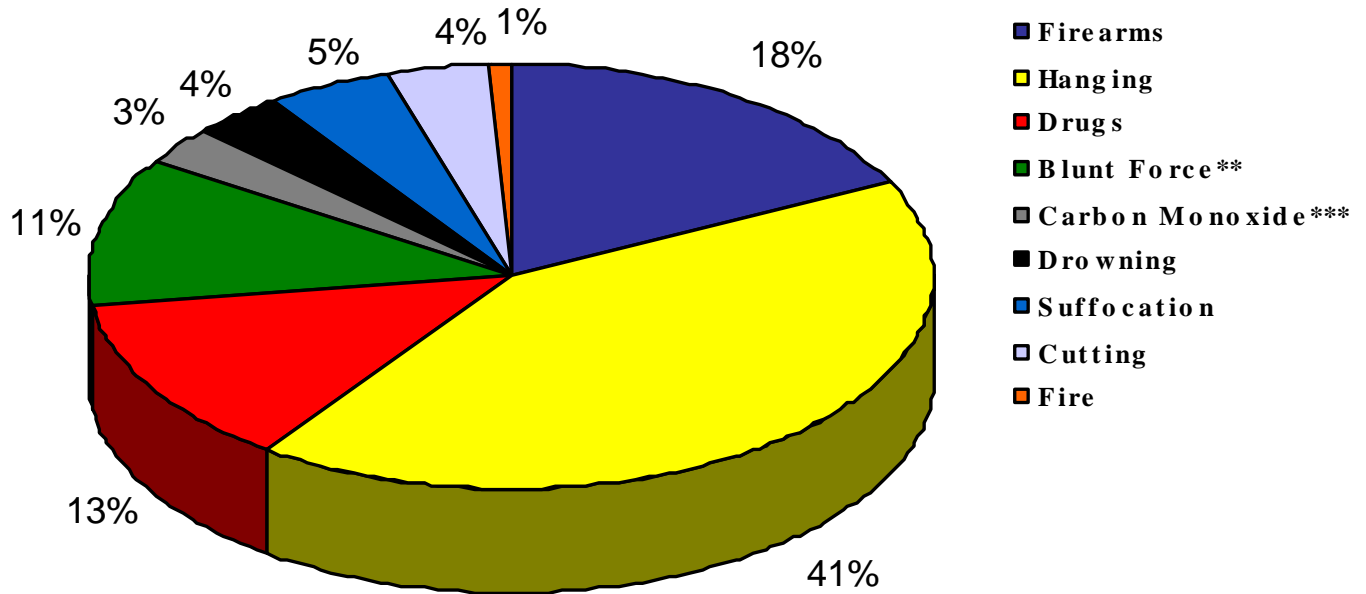
	Region	Essex County	Hudson County	Passaic County	Somerset County
Homicides	239	156	50	29	4
Population	2189147	793633	608975	489049	297490
Homicide Rate	10.9	19.7	8.2	5.9	1.3

Homicide rate per 100,000 people, based on the 2000 Census.

U.S. Homicide rate = 5.7 (Source: *Crime in the United States, 2003*, FBI, Uniform Crime Reports)

Suicides

Suicides by Category for the Region



	Region	Essex County	Hudson County	Passaic County	Somerset County
Firearms	19	4	5	7	3
Hanging	45	17	15	7	6
Drugs	14	4	5	3	2
Blunt Force**	12*	5*	4*	2	1
Carbon Monoxide***	3	0	0	0	3
Drowning	4*	1*	3*	0	0
Suffocation	5	3	0	1	1
Cutting	4	2	1	0	1
Fire	1	0	1	0	0

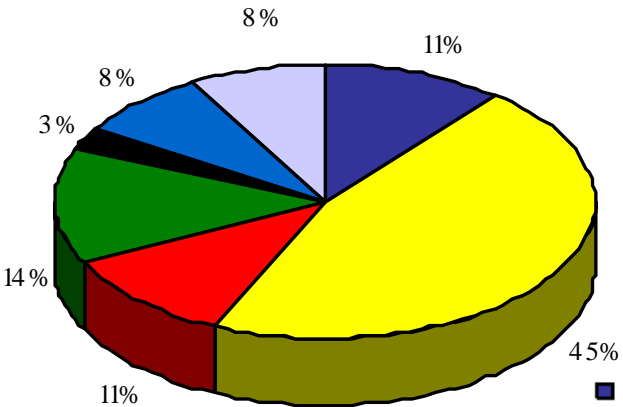
* Includes Multiple Modalities.

** Includes suicidal jumping from heights, in front of trains, and motor vehicles.

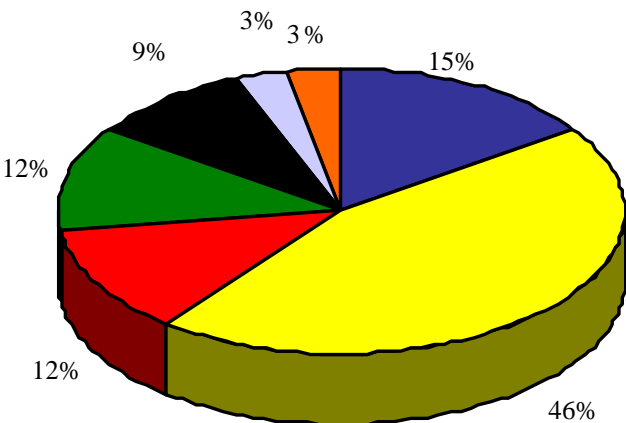
*** Exhaust fumes.

Suicides by Category for Essex, Hudson, Passaic, and Somerset Counties

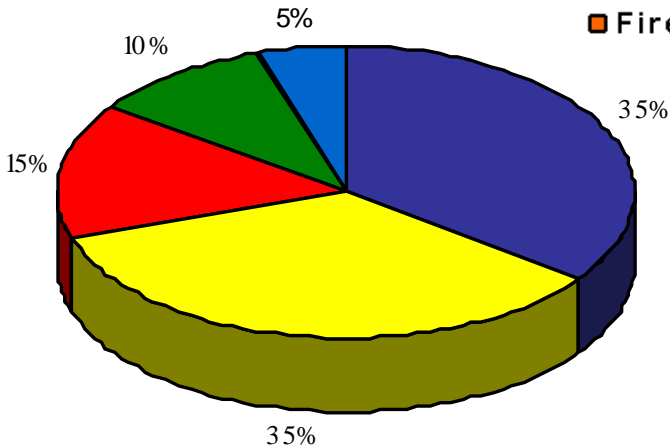
Essex County



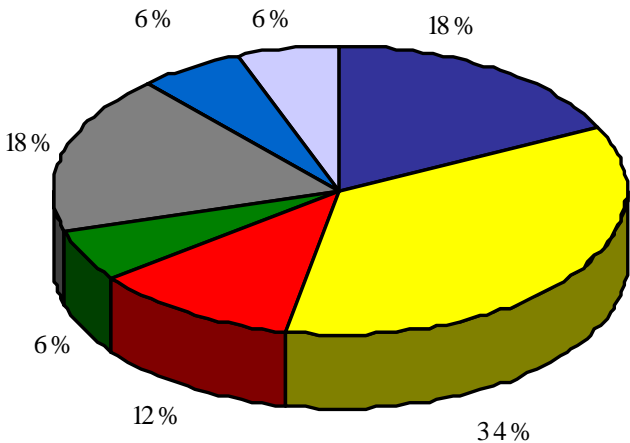
Hudson County



Passaic County



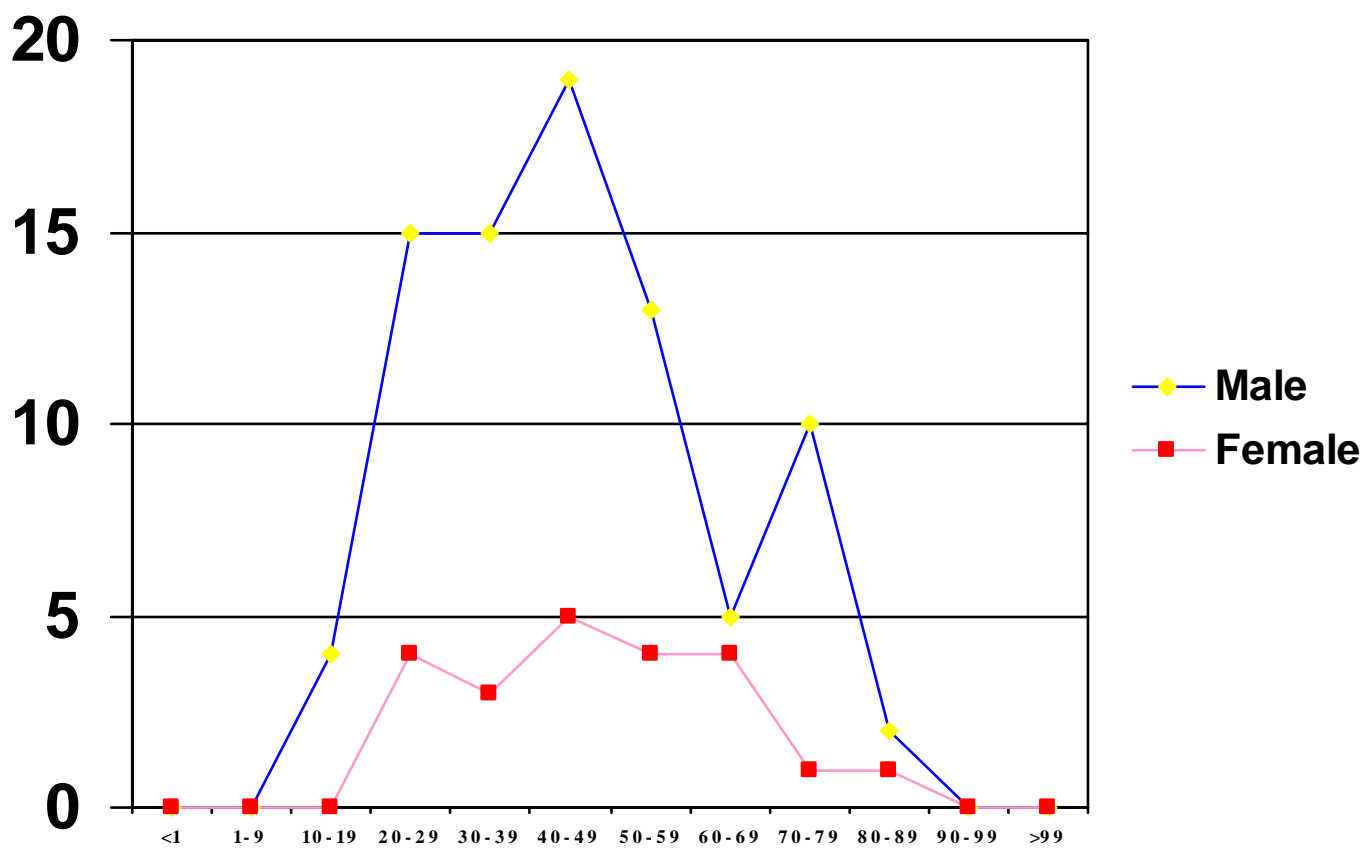
Somerset County



- Firearms
- Hanging
- Drugs
- Blunt Force**
- Carbon Monoxide***
- Drowning
- Suffocation
- Cutting
- Fire

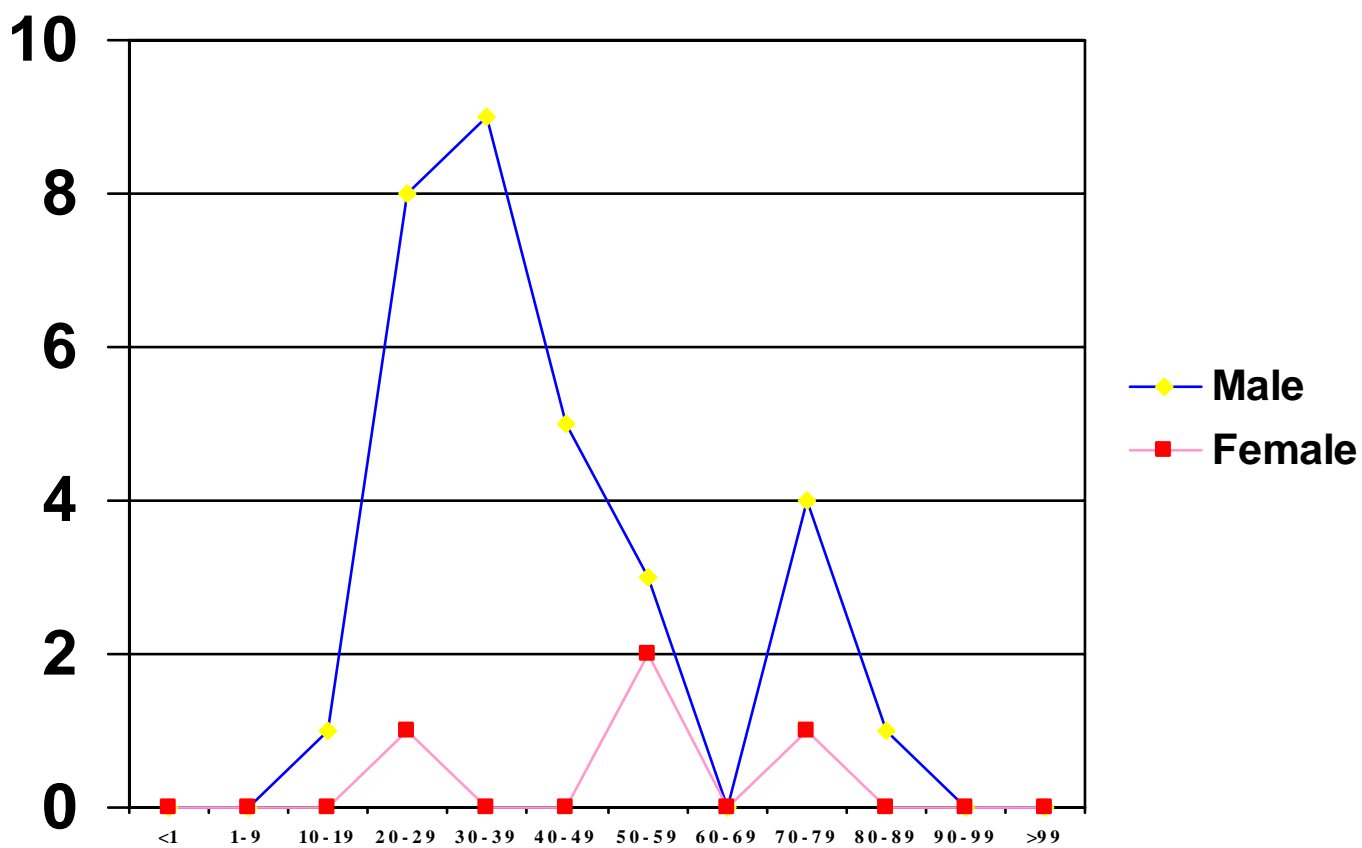
** Includes suicidal jumping from heights, in front of trains, and motor vehicles.
 *** Exhaust fumes.

Suicides by Age and Gender for the Region



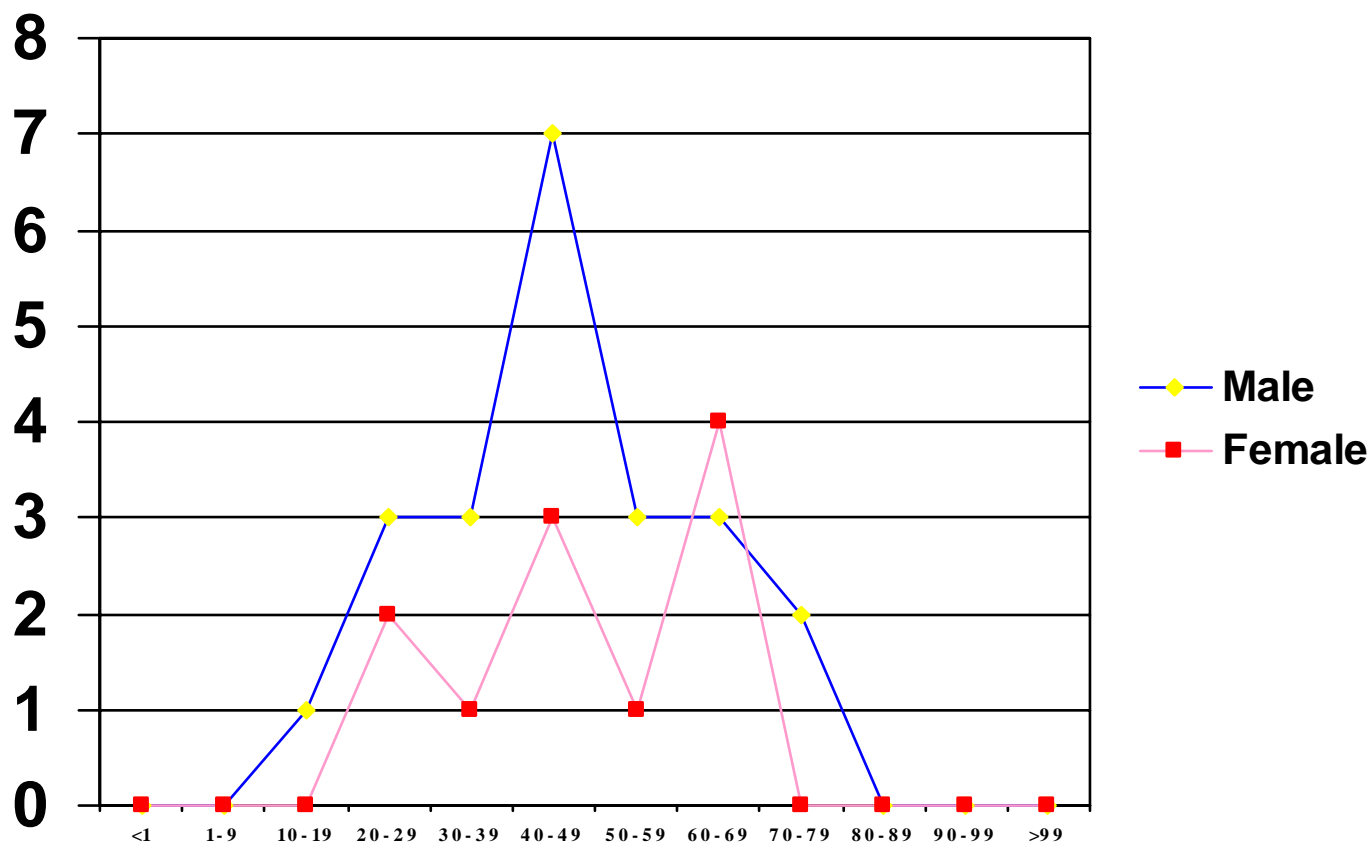
	<1	1 - 9	10 - 19	20 - 29	30 - 39	40 - 49	50 - 59	60 - 69	70 - 79	80 - 89	90 - 99	>99
Male	0	0	4	15	15	19	13	5	10	2	0	0
Female	0	0	0	4	3	5	4	4	1	1	0	0

Suicides by Age and Gender for Essex County



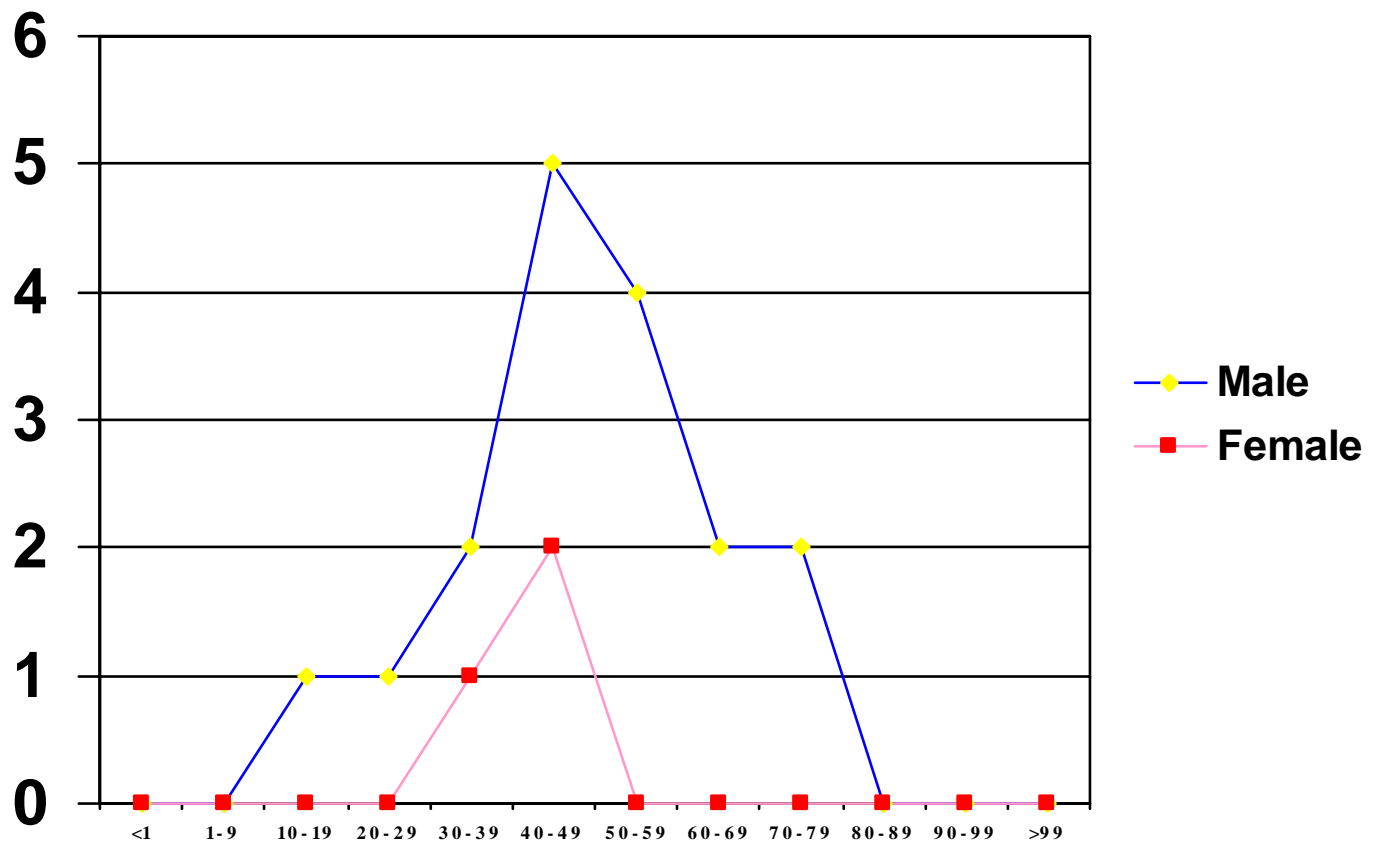
	<1	1 - 9	10 - 19	20 - 29	30 - 39	40 - 49	50 - 59	60 - 69	70 - 79	80 - 89	90 - 99	>99
Male	0	0	1	8	9	5	3	0	4	1	0	0
Female	0	0	0	1	0	0	2	0	1	0	0	0

Suicides by Age and Gender for Hudson County



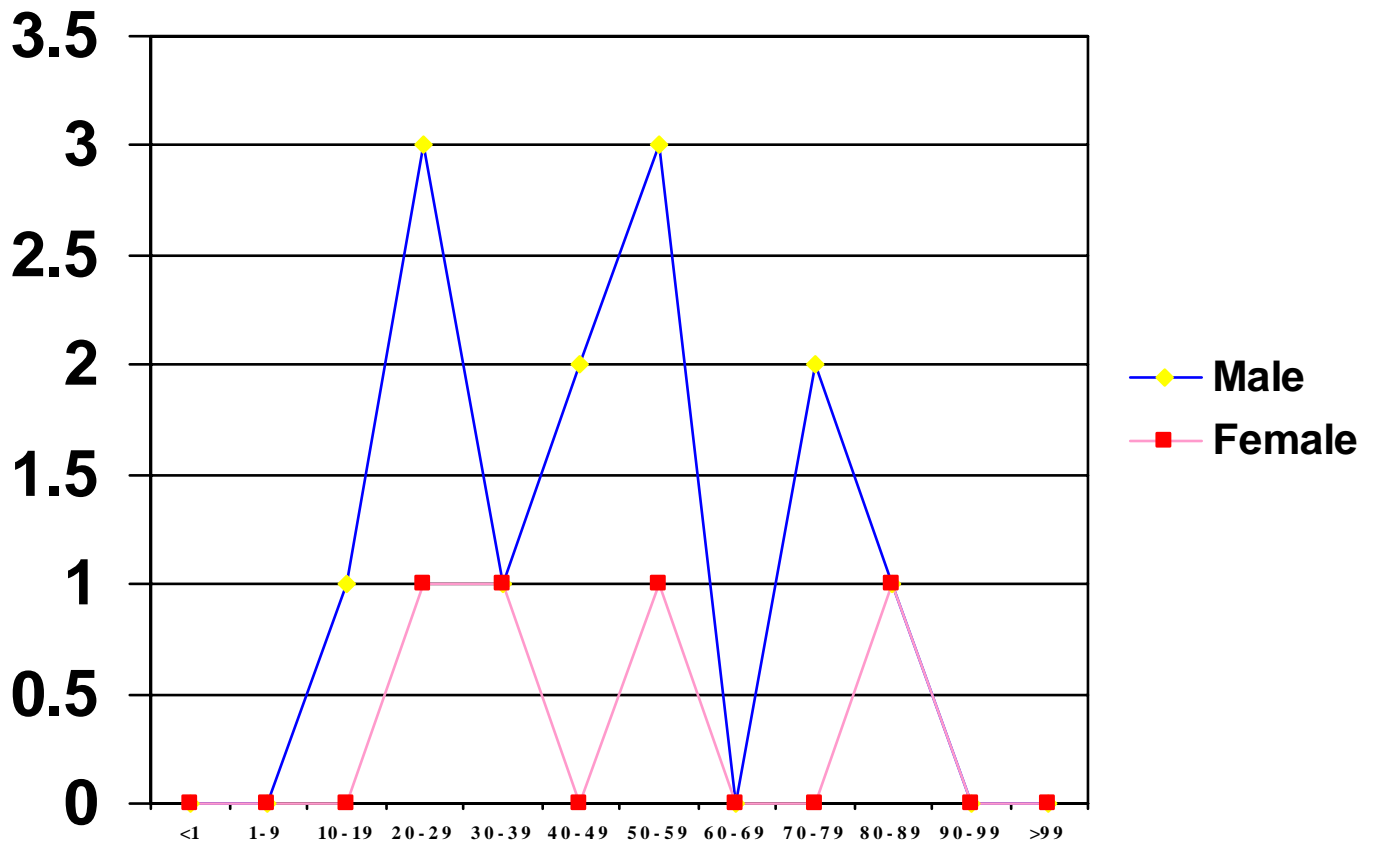
	<1	1 - 9	10 - 19	20 - 29	30 - 39	40 - 49	50 - 59	60 - 69	70 - 79	80 - 89	90 - 99	>99
Male	0	0	1	3	3	7	3	3	2	0	0	0
Female	0	0	0	2	1	3	1	4	0	0	0	0

Suicides by Age and Gender for Passaic County



	<1	1 - 9	10 - 19	20 - 29	30 - 39	40 - 49	50 - 59	60 - 69	70 - 79	80 - 89	90 - 99	>99
Male	0	0	1	1	2	5	4	2	2	0	0	0
Female	0	0	0	0	1	2	0	0	0	0	0	0

Suicides by Age and Gender for Somerset County



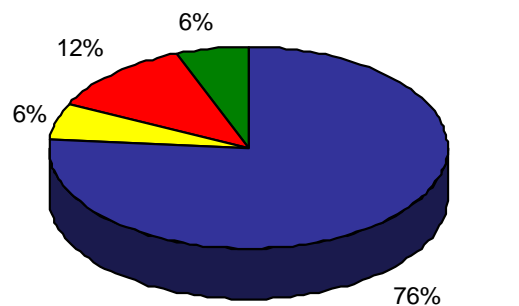
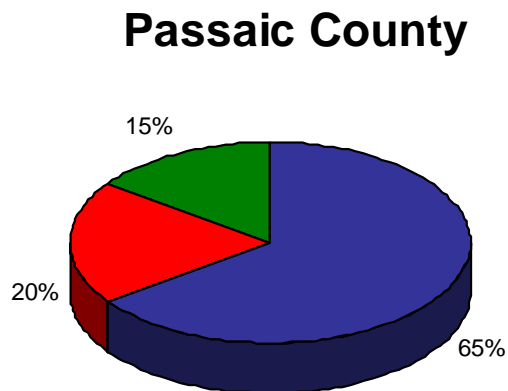
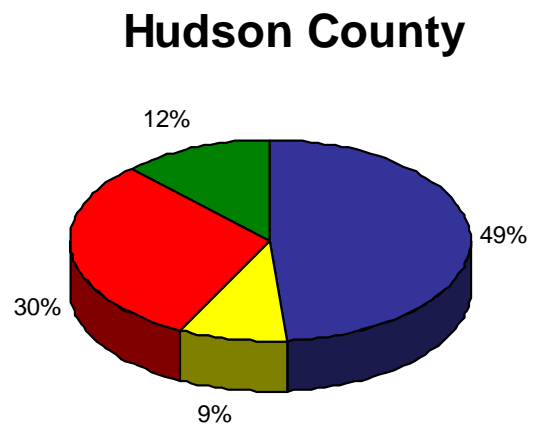
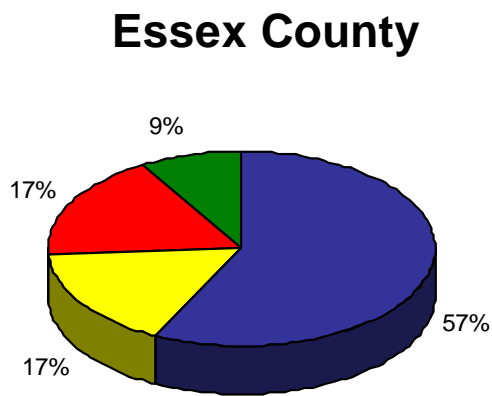
	<1	1 - 9	10 - 19	20 - 29	30 - 39	40 - 49	50 - 59	60 - 69	70 - 79	80 - 89	90 - 99	>99
Male	0	0	1	3	1	2	3	0	2	1	0	0
Female	0	0	0	1	1	0	1	0	0	1	0	0

Suicides by Race for the Region



	White	Black	Hispanic	Other
Region	62	10	22	11
Essex County	20	6	6	3
Hudson County	16	3	10	4
Passaic County	13	0	4	3
Somerset County	13	1	2	1

Suicides by Race for Essex, Hudson, Passaic, and Somerset Counties



Drug Abuse

Drug Abuse Cases* (Illicit Drugs)

	Region	Essex County	Hudson County	Passaic County	Somerset County
Amphetamine & Methamphetamine	13	8	1	3	1
Cannabinoids	104	64	20	15	5
Cocaine	297	179	47	59	12
Ethanol	455	210	107	94	44
Methadone	56	39	8	9	0
Opiates	288	152	61	58	17
Phencyclidine (PCP)	15	8	5	2	0
Fentanyl	6	1	1	2	2

* Includes drug related fatalities and drug positive cases from all manners.

Drug Positive Cases By Manner of Death for the Region

	Natural	Accident*	Suicide	Homicide	Undetermined
Amphetamine & Methamphetamine	0	5	1	7	0
Cannabinoids	8	32	5	58	1
Cocaine	15	230	13	34	5
Ethanol	140	185	32	85	13
Methadone	16	37	1	2	0
Opiates	29	222	12	19	6
Phencyclidine (PCP)	0	3	0	12	0
Fentanyl	3	3	0	0	0

•Category includes deaths due to direct or contributory effect of drugs and other accidental deaths with positive drug screen.

Drug Abuse Cases – Causative or Contributory

	Region	Essex County	Hudson County	Passaic County	Somerset County
Toxicology Submitted	1663	767	435	324	137
Total Drug Positive Cases	989	485	224	201	79
Deaths Due to Drugs	349	190	68	73	18

Death in Custody

Deaths in Custody for the Region

Location				
	State Prison	County Jail	City Jail	Psychiatric/ Institutional Facility
Region	7	17	7	12
Essex County	6	3	5	2
Hudson County	0	7	1	0
Passaic County	1	7	1	6
Somerset County	0	0	0	4

Manner						
	Total	Natural	Accident	Suicide	Homicide	Undetermined
Region	43	34	4	3	1	1
Essex County	16	11	3	2	0	0
Hudson County	8	6	1	0	1	0
Passaic County	15	13	0	1	0	1
Somerset County	4	4	0	0	0	0

Pediatric Cases

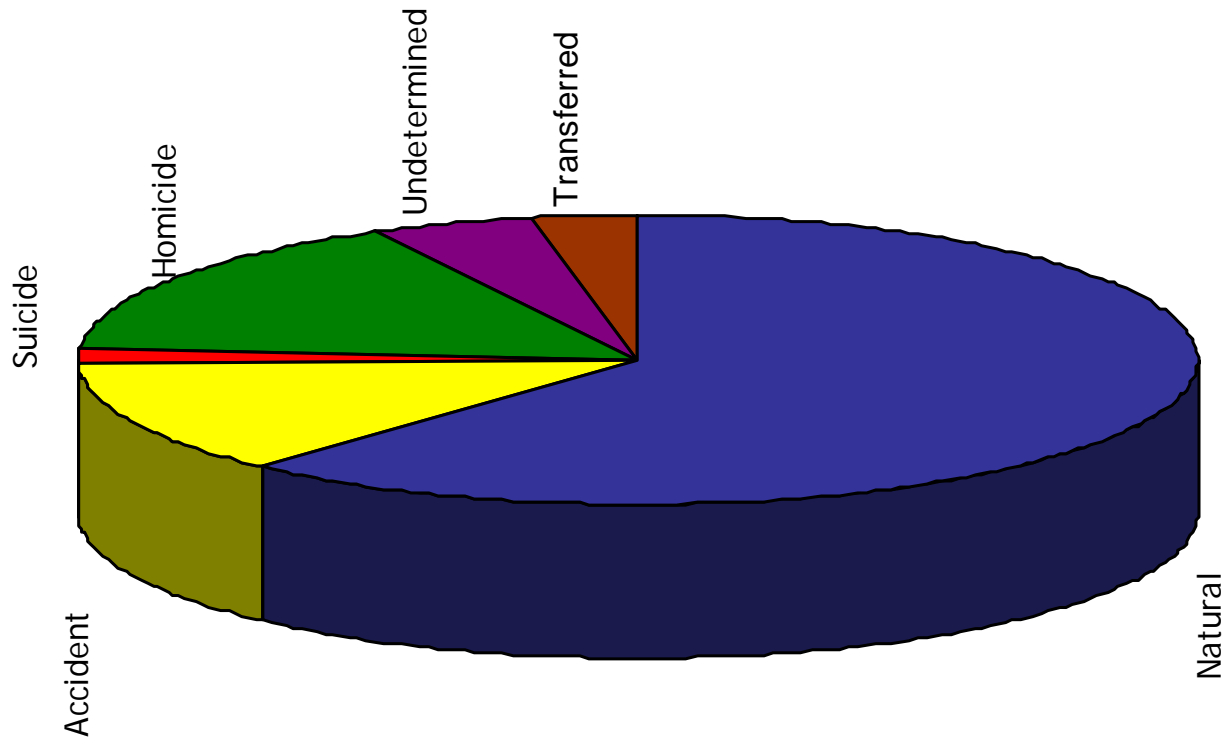
Fetal Deaths

There were a total of 11 deaths reported, 6 of which were accepted.

Sudden Infant Death Syndrome

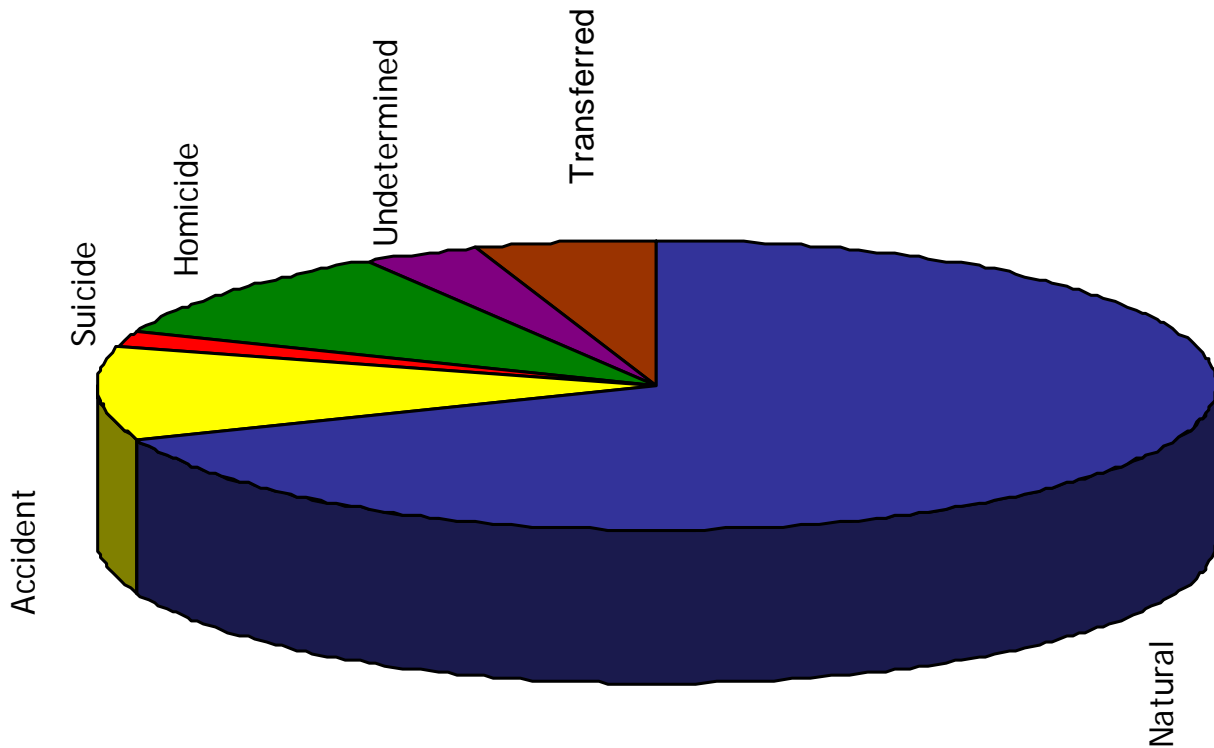
	Reported	Accepted	Autopsy	View
Region	15	15	15	0
Essex County	8	8	8	0
Hudson County	4	4	4	0
Passaic County	3	3	3	0
Somerset County	0	0	0	0

Pediatric (15 years of age and less) by Manner of Death for the Region



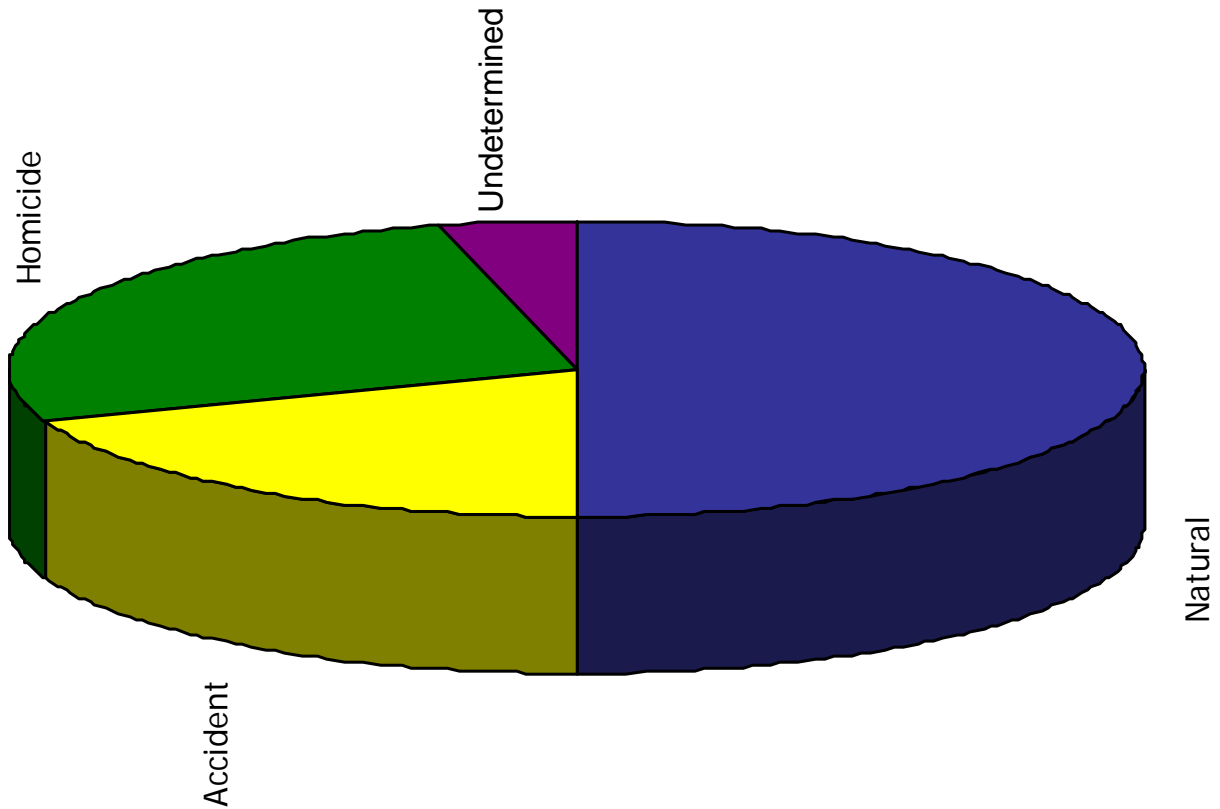
	Total	Natural	Accident	Suicide	Homicide	Undetermined	Transferred	Pending
Reported Cases	102	63	13	2	16	5	3	0
Percent	100	61.8	12.7	1.9	15.7	4.9	2.9	0

Pediatric (15 years of age and less) by Manner of Death for Essex County



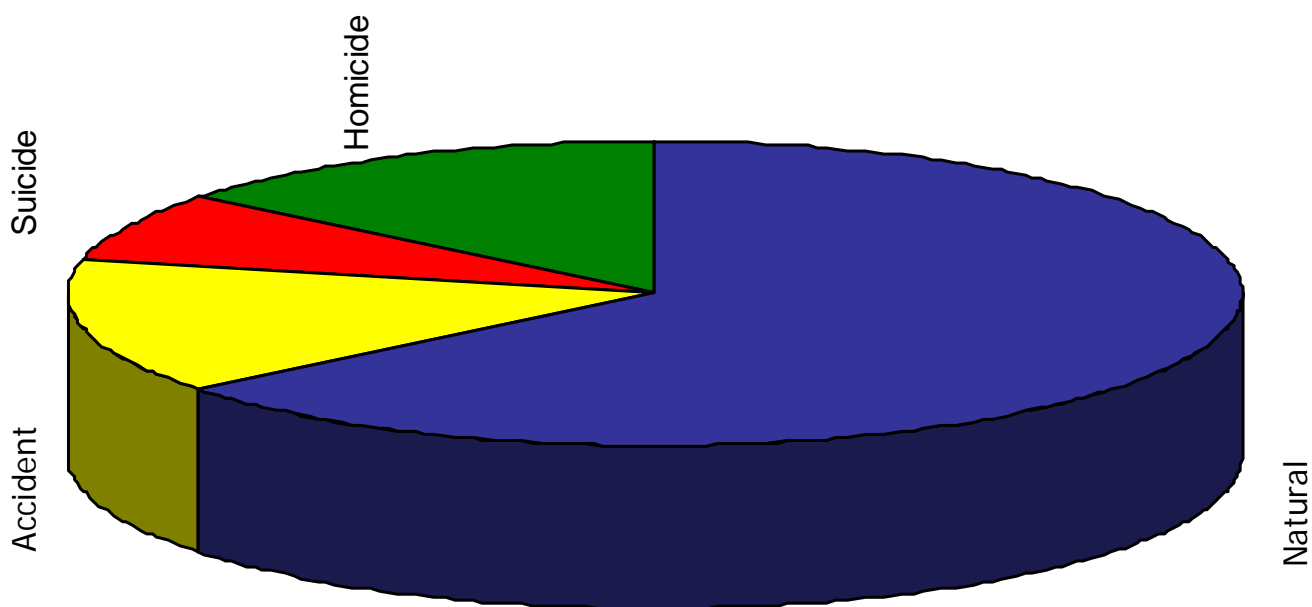
	Total	Natural	Accident	Suicide	Homicide	Undetermined	Transferred	Pending
Reported Cases	58	40	6	1	6	2	3	0
Percent	100	69.0	10.3	1.7	10.3	3.4	5.2	0

Pediatric (15 years of age and less) by Manner of Death for Hudson County



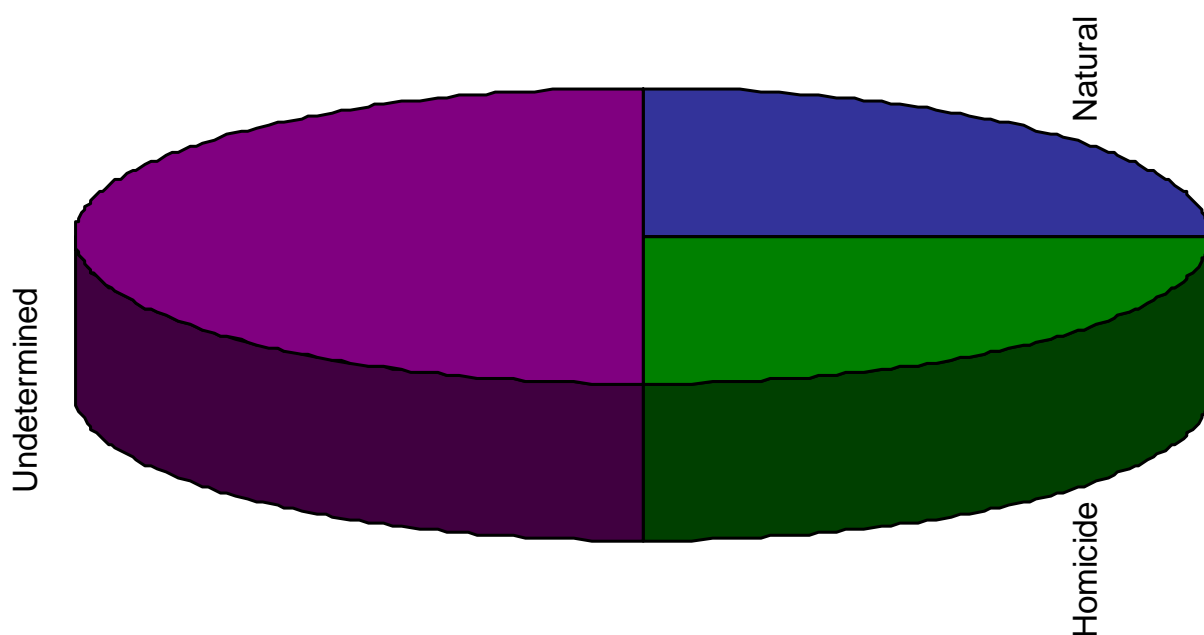
	Total	Natural	Accident	Suicide	Homicide	Undetermined	Transferred	Pending
Reported Cases	26	13	5	0	7	1	0	0
Percent	100	50.0	19.2	0	26.9	3.8	0	0

Pediatric (15 years of age and less) by Manner of Death for Passaic County



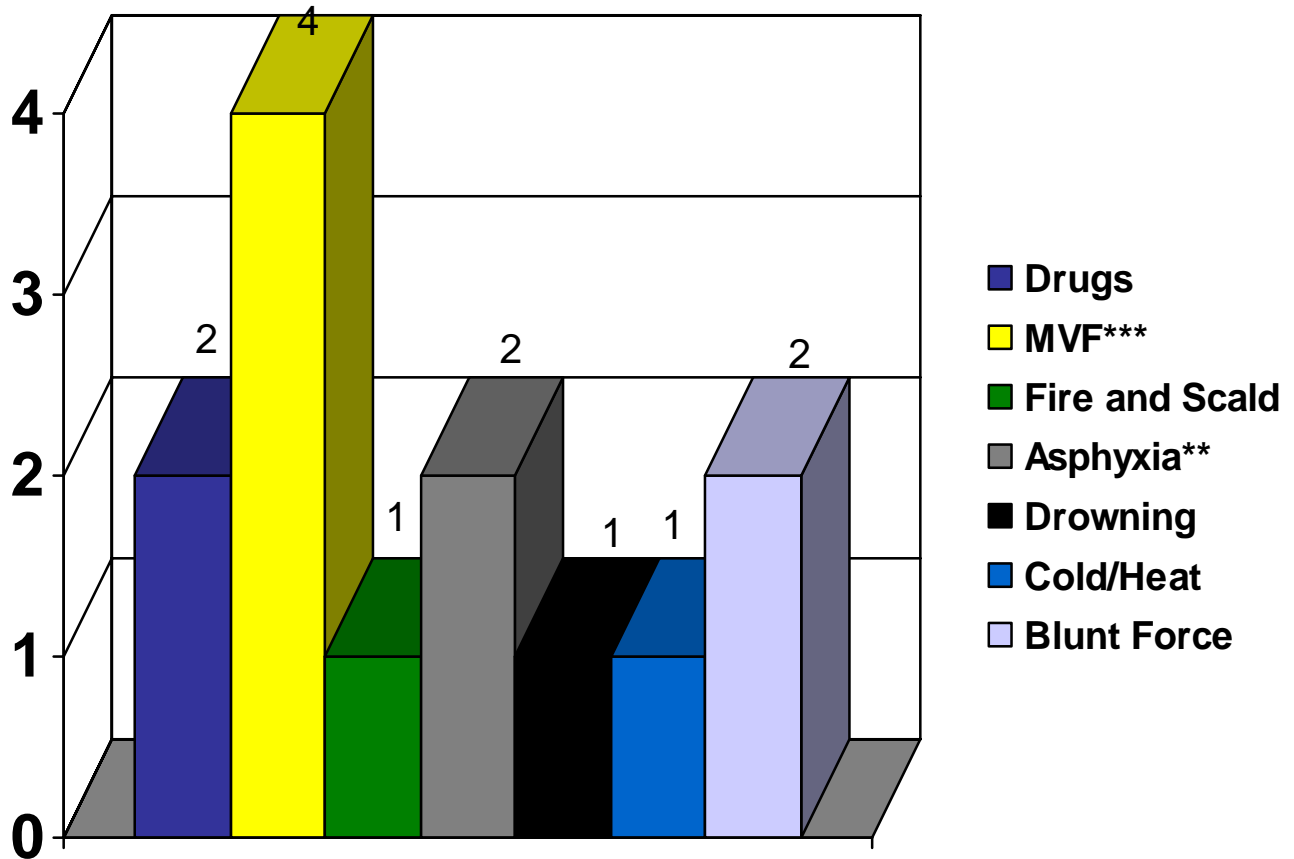
	Total	Natural	Accident	Suicide	Homicide	Undetermined	Transferred	Pending
Reported Cases	14	9	2	1	2	0	0	0
Percent	100	64.3	14.3	7.1	14.3	0	0	0

Pediatric (15 years of age and less) by Manner of Death for Somerset County



	Total	Natural	Accident	Suicide	Homicide	Undetermined	Transferred	Pending
Reported Cases	4	1	0	0	1	2	0	0
Percent	100	25	0	0	25	50	0	0

Pediatric (15 years of age and less) Accidents by Category for the Region

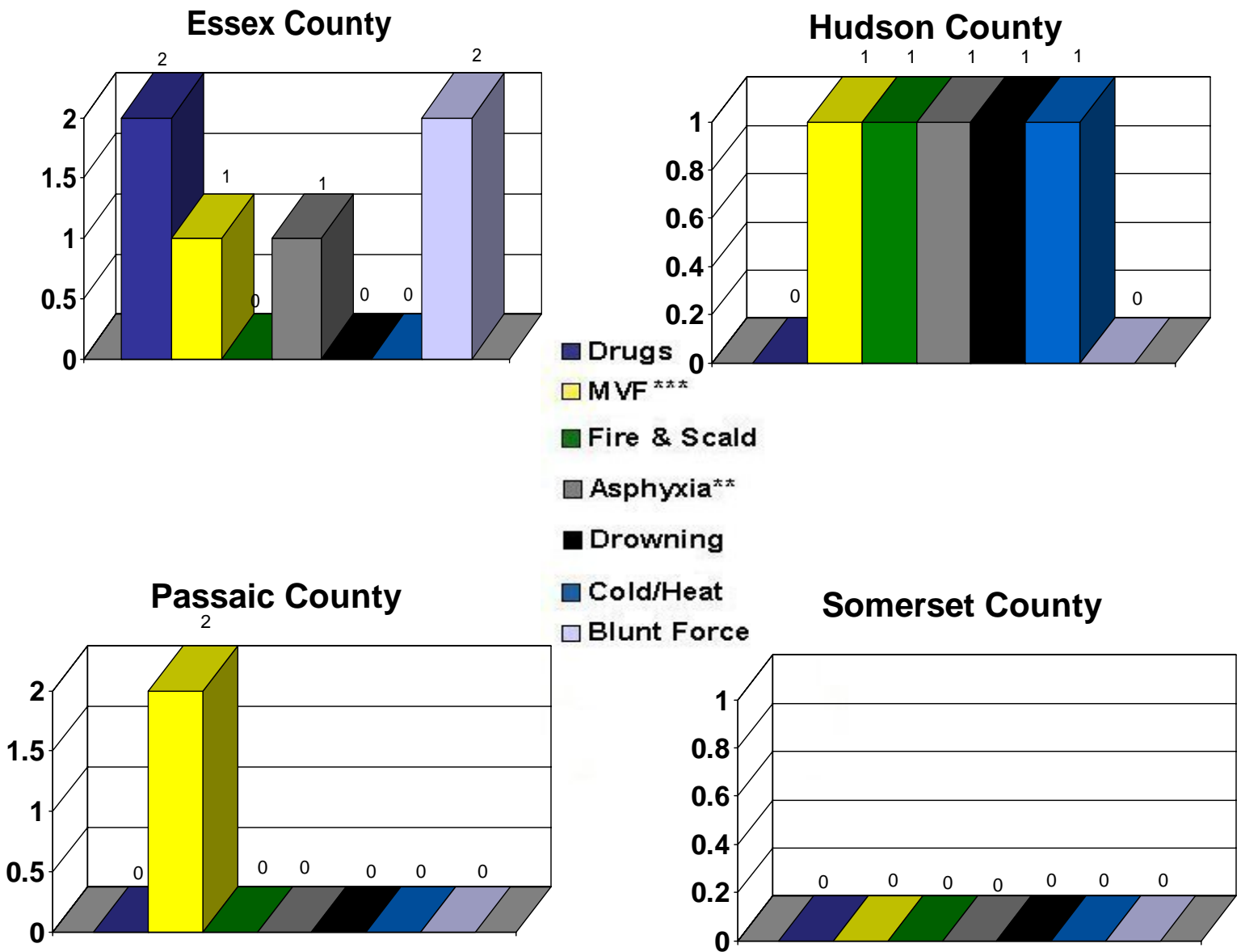


	Total	Drugs	***MVF	Fire & Scald	Asphyxia**	Drowning	Cold/Heat	Blunt Force
Region	13	2	4	1	2	1	1	2
Essex County	6	2	1	0	1	0	0	2
Hudson County	5	0	1	1	1	1	1	0
Passaic County	2	0	2	0	0	0	0	0
Somerset County	0	0	0	0	0	0	0	0

** Includes Positional, Choking, Traumatic, Carbon Monoxide and Suffocation.

*** Includes Air, Water and Land Vehicles.

Pediatric (15 years of age and less) Accidents by Category for Essex, Hudson, Passaic, and Somerset Counties



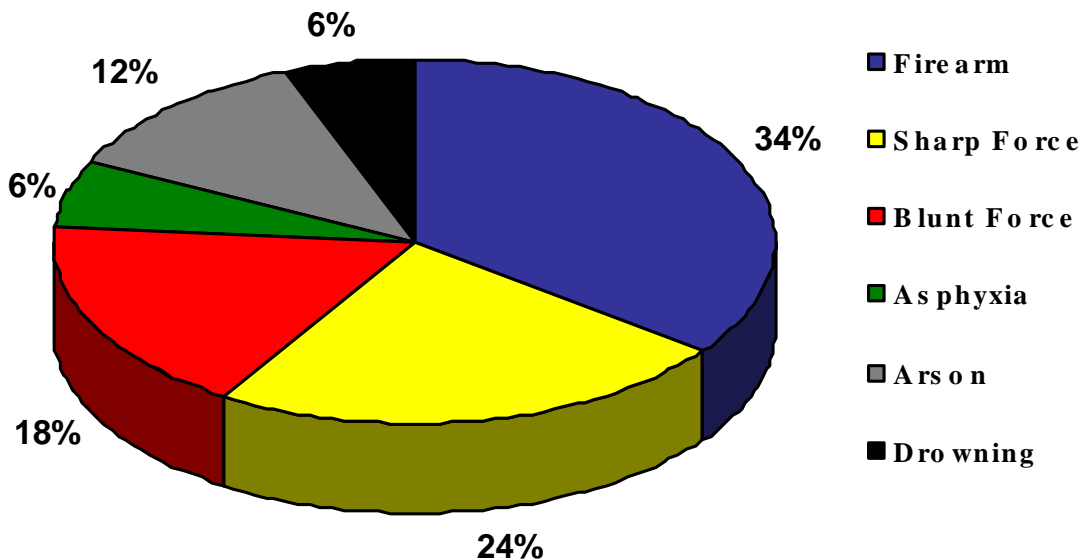
**Includes Positional, Choking, Traumatic, Carbon Monoxide and Suffocation.

***Includes Air, Water and Land vehicles.

Pediatric (15 years of age and less) Suicide

There were two pediatric suicides from Essex & Passaic Counties, which were the result of hanging.

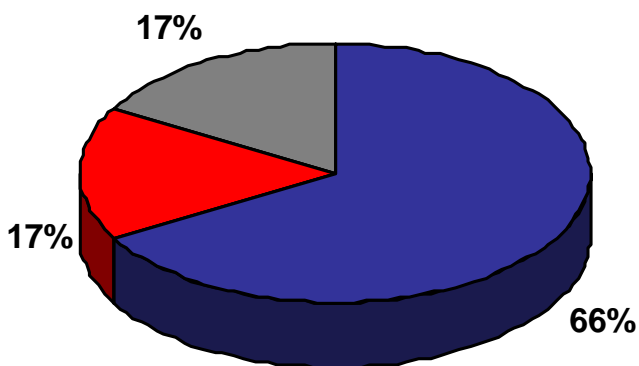
Pediatric (15 years of age and less) Homicides by Category for the Region



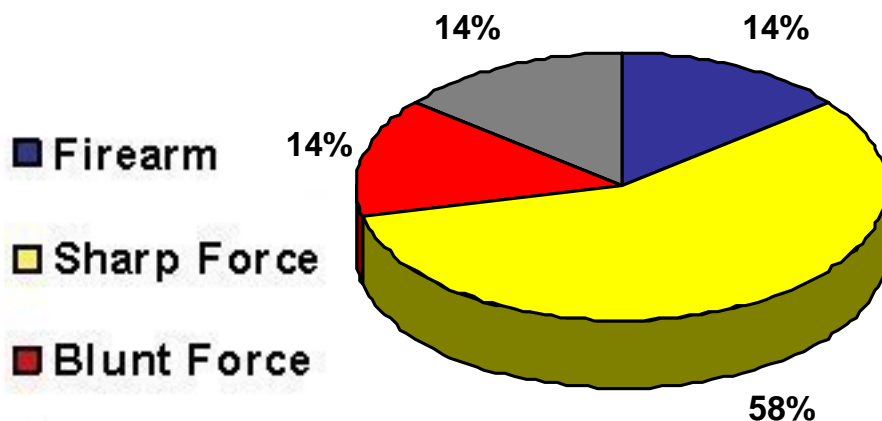
	Region	Essex County	Hudson County	Passaic County	Somerset County
Firearm	6	4	1	1	0
Sharp Force	4	0	4	0	0
Blunt Force	3	1	1	1	0
Asphyxia	1*	0	0	0	1*
Arson	2	1	1	0	0
Drowning	1*	0	0	0	1*

Pediatric (15 years of age and less) Homicides by Category for Essex, Hudson, Passaic, and Somerset Counties

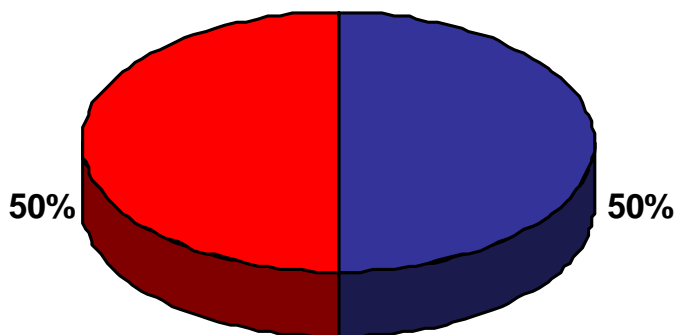
Essex County



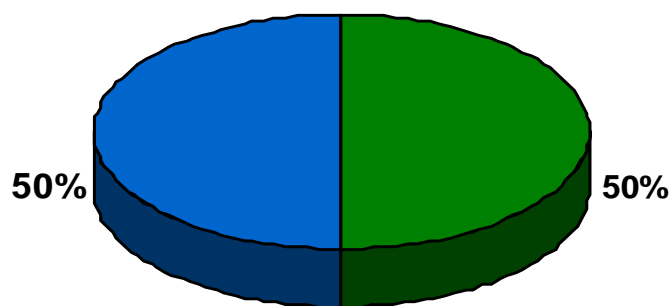
Hudson County



Passaic County



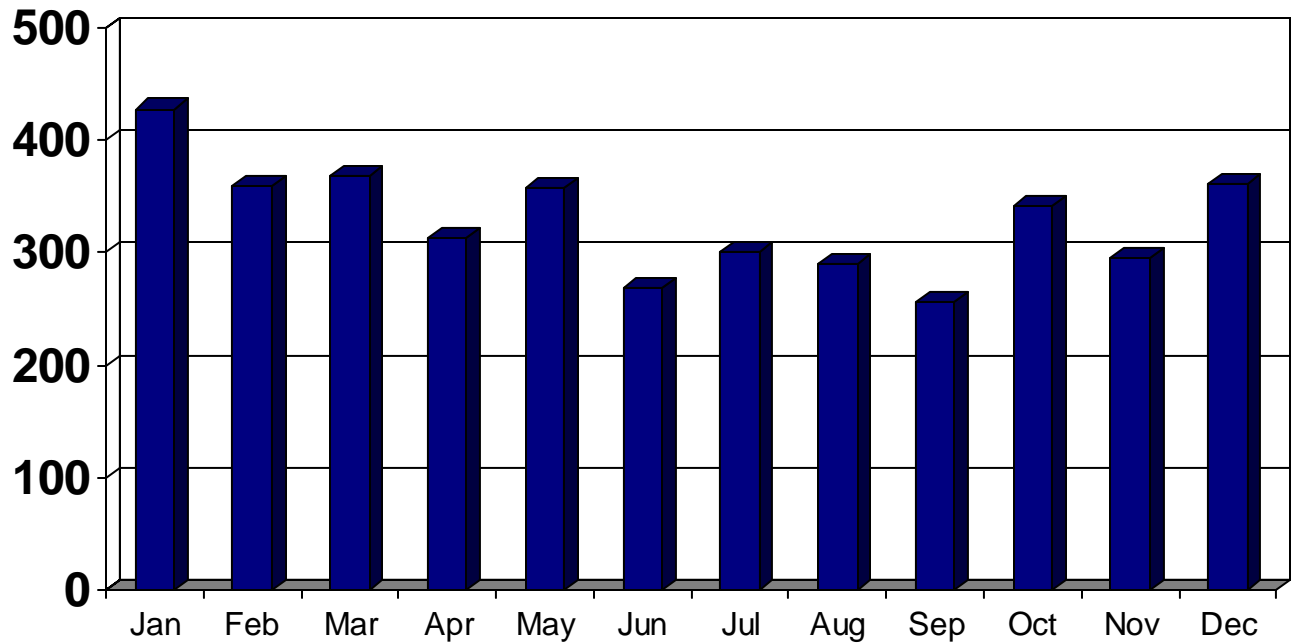
Somerset County



- Firearm
- Sharp Force
- Blunt Force
- Asphyxia
- Arson
- Drugs
- Drowning

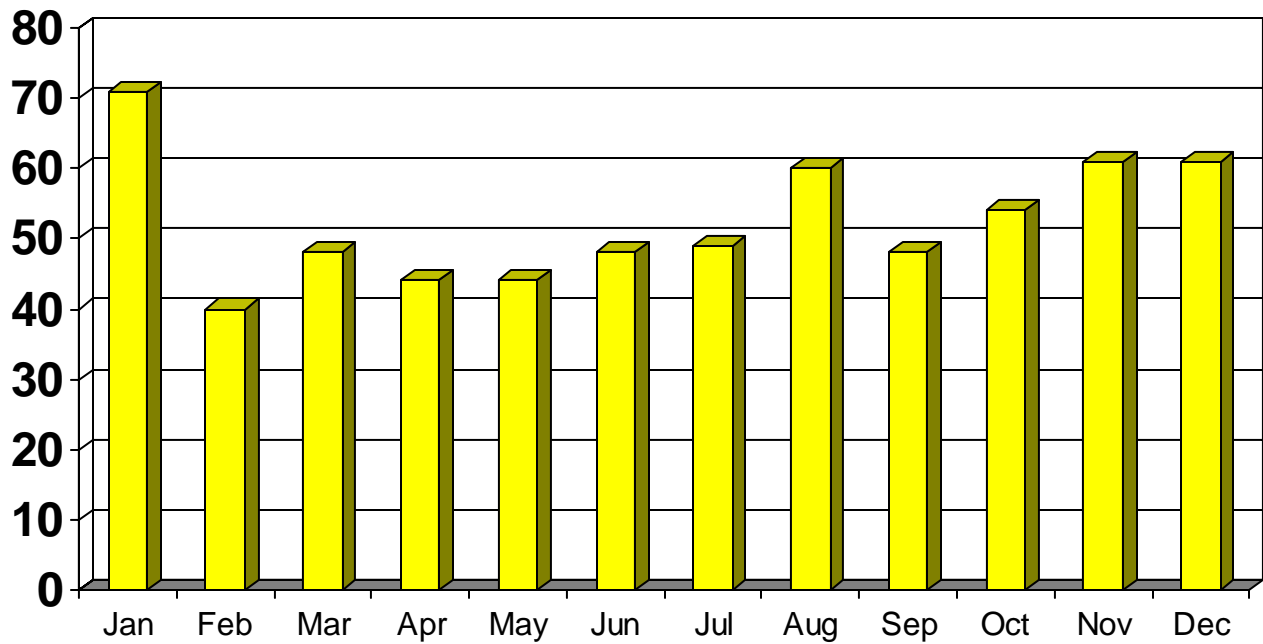
Manner by Month

Naturals by Month for the Region



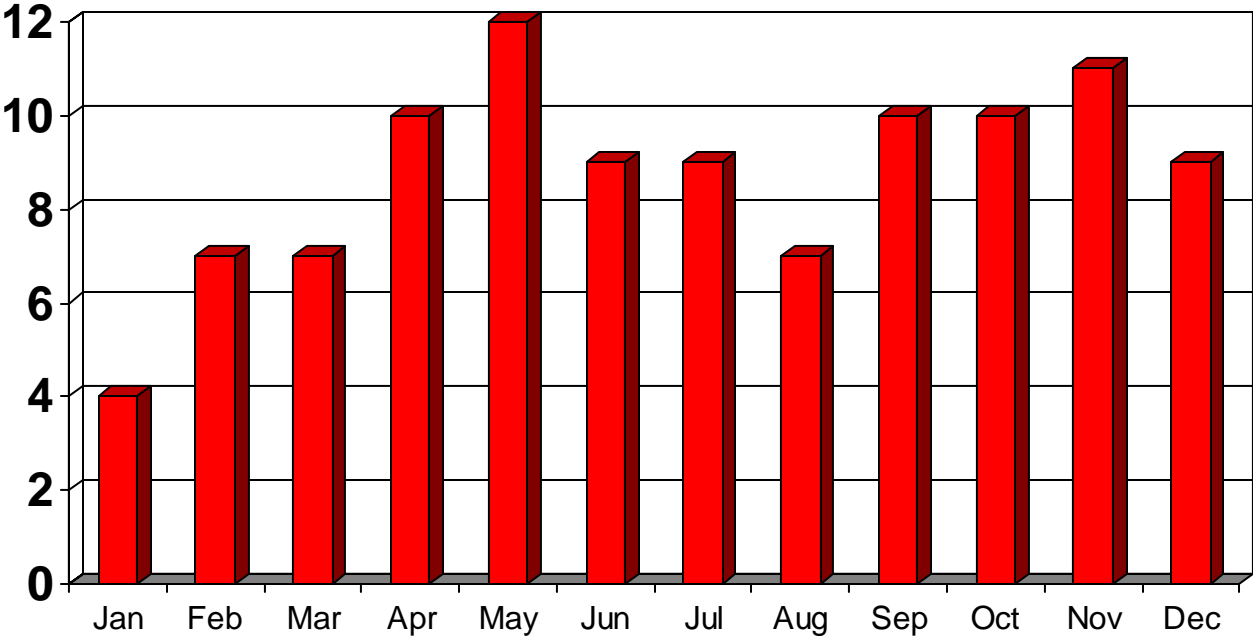
Jan	Feb	Mar	Apr	May	Jun	Jul	Aug	Sep	Oct	Nov	Dec
428	360	369	313	358	269	301	290	257	342	295	361

Accidents by Month for the Region



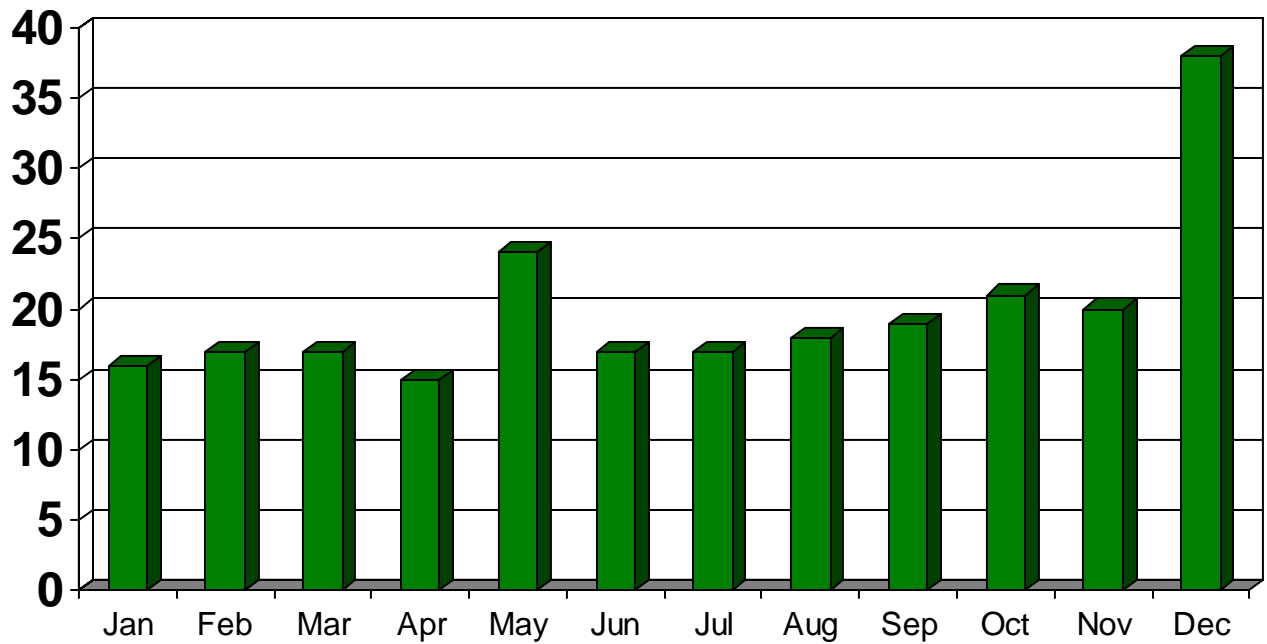
Jan	Feb	Mar	Apr	May	Jun	Jul	Aug	Sep	Oct	Nov	Dec
71	40	48	44	44	48	49	60	48	54	61	61

Suicides by Month for the Region



Jan	Feb	Mar	Apr	May	Jun	Jul	Aug	Sep	Oct	Nov	Dec
4	7	7	10	12	9	9	7	10	10	11	9

Homicides by Month for the Region



Jan	Feb	Mar	Apr	May	Jun	Jul	Aug	Sep	Oct	Nov	Dec
16	17	17	15	24	17	17	18	19	21	20	38

