



Attendance Matters. Graduation Matters.



graduationmatters.mt.gov



#schooleveryday

Laurie Bishop – Graduation Matters Coach, OPI

Amity Malberg – Reader Tutor Mentor Coordinator, United Way of Yellowstone County

Brian Gum – Principal, Stevensville High School

Jennifer Smith – Director of Indian Education, Billings Public Schools

What is Chronic Absence?

Attendance Works defines chronic absence as **missing 10% or more of school for any reason.** An estimated 7.5 million or **one out of 10 students** are chronically absent in the United States.



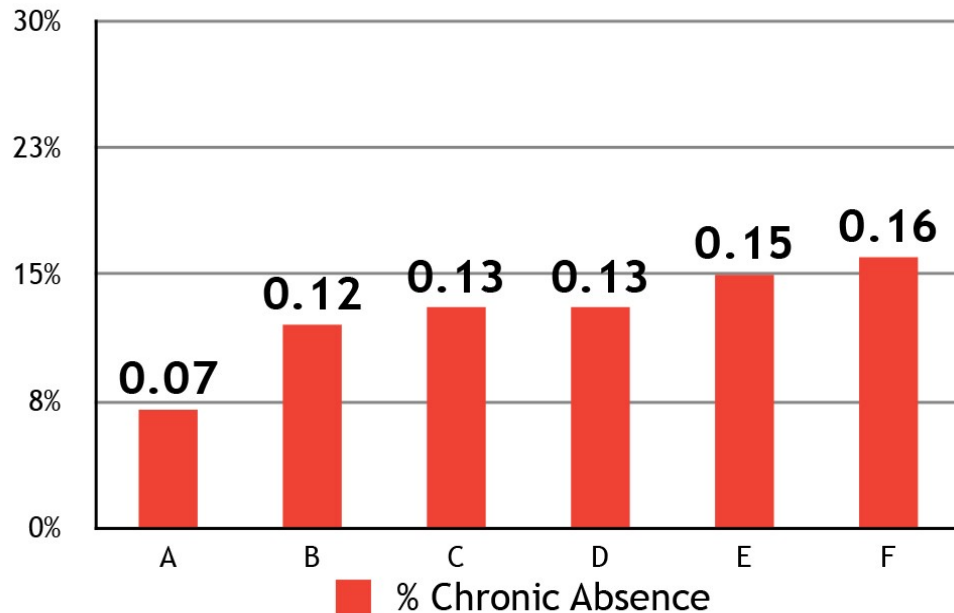
Chronic absence is different from truancy (unexcused absences only) or average daily attendance (how many students show up to school each day).



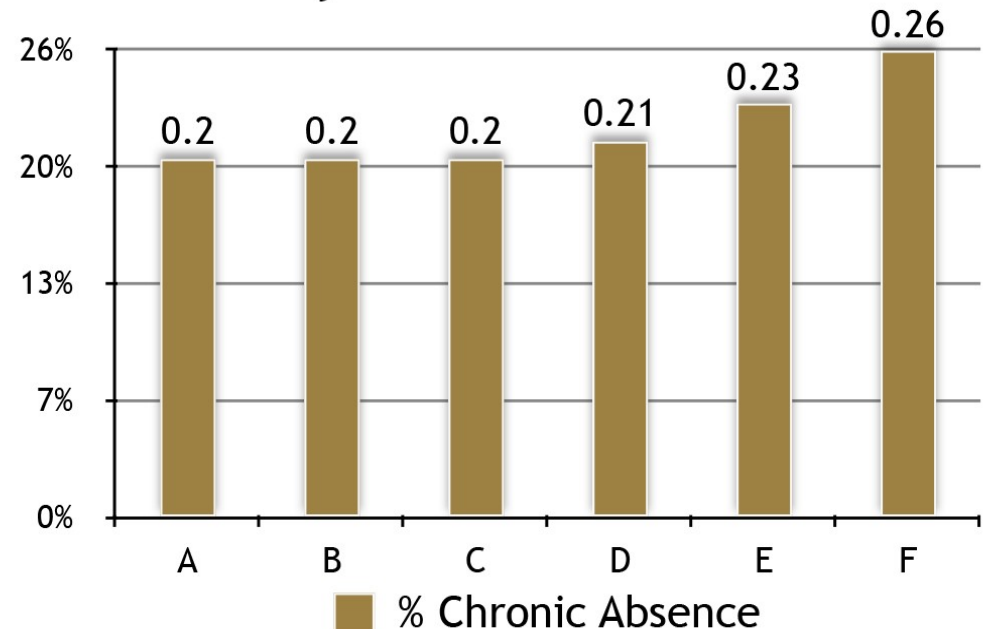
High Levels of Average Daily Attendance (ADA) Can Mask Chronic Absence

90% and even 95% ≠ A

Chronic Absence For 6 Elementary Schools in Oakland, CA with 95% ADA in 2012



Chronic Absence for 6 Schools in New York City with 90% ADA in 2011-12



98% ADA = little chronic absence
95% ADA = don't know
93% ADA = significant chronic absence



What Tools Are Available To Calculate Chronic Absence?

FREE FROM ATTENDANCE WORKS!

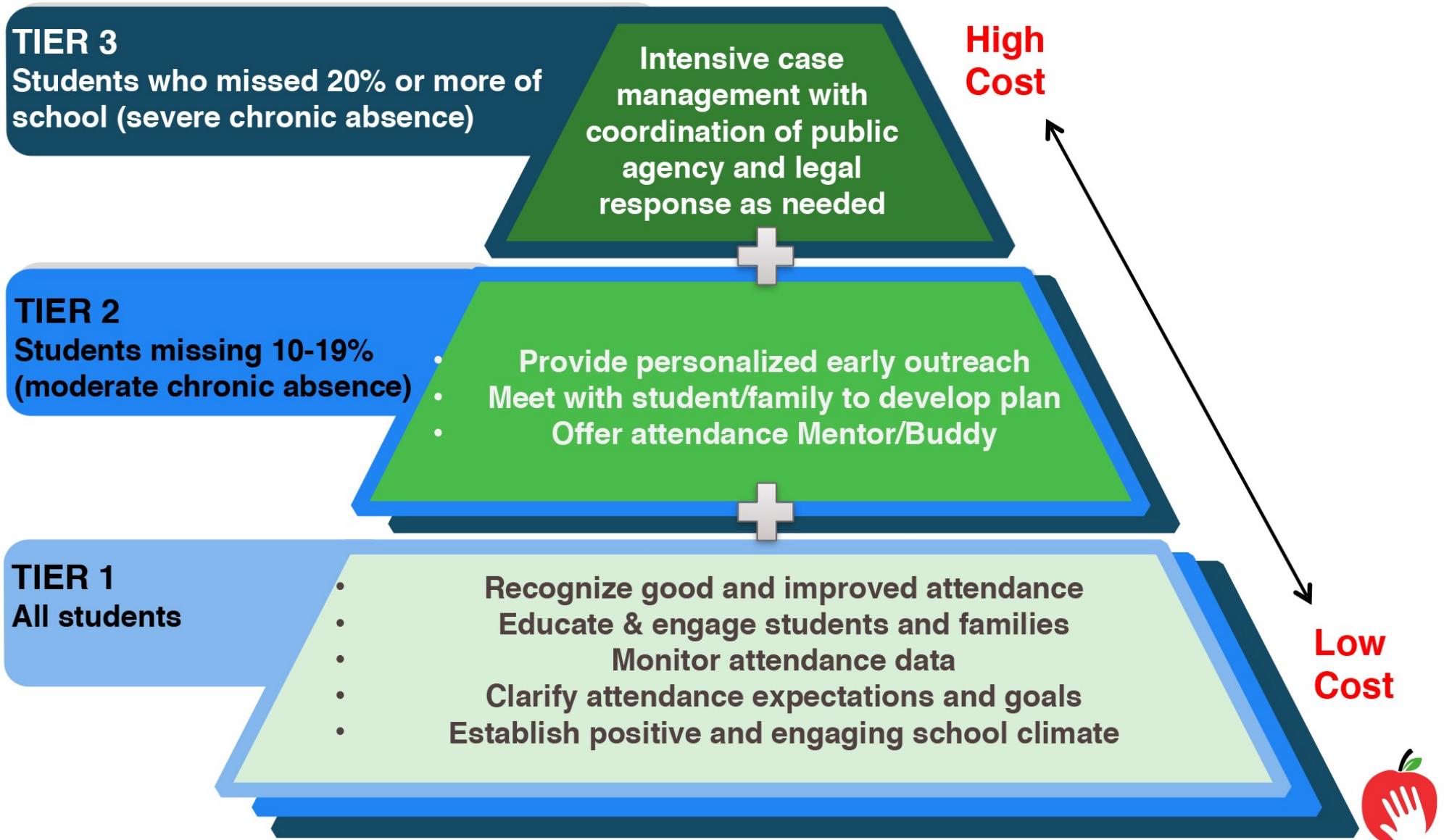
The District Attendance Tracking Tools (DATT) and School Attendance Tracking Tools (SATT) are now available in Three Modules!

- Grades K-5
- Grades 6-8 and
- Grades 9-12

They also offer a Tool to Combine the Modules for K-12 reports.



Improving attendance requires a tiered approach that begins with prevention





The Four Steps to GMM

1: Convene a multi-stakeholder TEAM

Existing school-based team (incl. students & family)
Community organizations that share mission of family wellness
Main street business that care about strong economy/community

2: Know Your DATA

Multi-year trend data on how many, who, when students drop out
Engage school, students & community in data-driven discussion

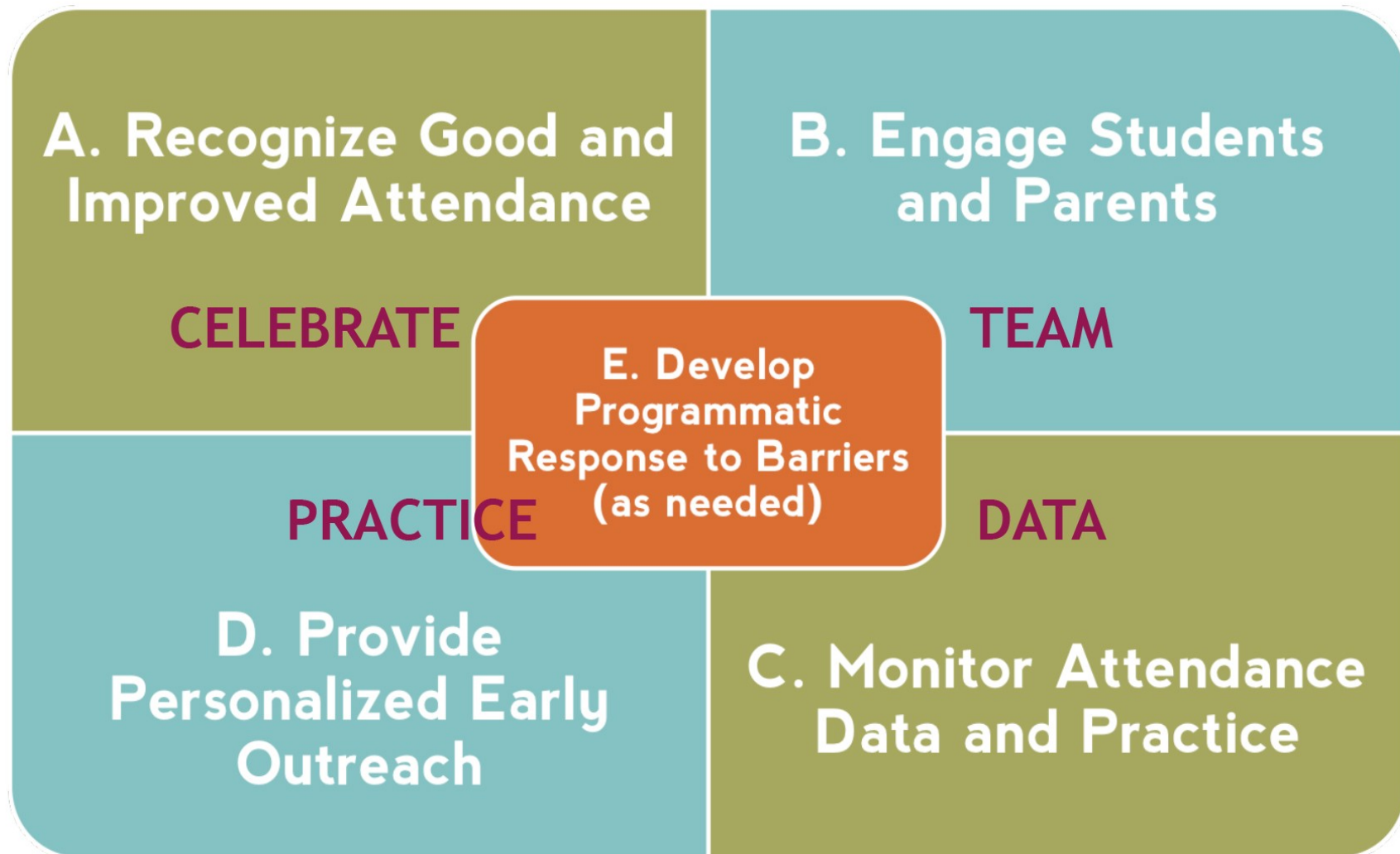
3: Implement PRACTICE

Based on what is already working locally and in Montana

4: Build Public Support - CELEBRATE

Posters, Pledges, Media

AW Recommended Site-Level Strategies





This is How We Do It

Stevensville

Team

School Intervention Team, Community Biz Partners

Data

Risk Score = attendance, referrals, grades

Practice

MBI Tiered Interventions

Contracts

Sports Eligibility – above MTHSA standards

Celebrate

Community Connection Card



This is How We Do It

United Way of Yellowstone County

Team

Piloted at one elementary – adding two more this summer
United Way, Community, Volunteers

Data

Student and Class Level Attendance

Practice

Late Summer = Door Hangers – RE: school start, attendance

School Year Start = BIG celebration with community, home attendance calendar

1st Month & Quarterly = Classroom Competitions

Community Mentors

Celebrate

Community Messaging, 1st Month-end Assembly, Prizes

Recognized improvement of struggling students along with strong attendance

Welcome packet

Door to Door Campaign



Newman Elementary Schedule 2015-2016
(406) 281-6215

<p>Vacation Days</p> <ul style="list-style-type: none"> September 7 October 15 and 16 November 25 - 27 December 23 - January 1 January 18 February 12 and 15 March 25 and 28 April 11 and 22 May 6 and 30 	<p>Early Release Days</p> <ul style="list-style-type: none"> September 24 October 14 November 24 February 11 March 24 June 3
<p>Parent Teacher Conferences</p> <ul style="list-style-type: none"> November 4, 5, and 6 	

United Way LIVE UNITED

ATTENDANCE MATTERS!

Did You know?...

School starts August 26th

EVERY DAY COUNTS BE THERE!

NEWMAN ELEMENTARY SCHOOL
Phone: (406) 281-6215
Start Date: August 26th, 2015
Start Time: 8AM

RICHARD ELEMENTARY SCHOOL
Phone: (406) 281-6216
Start Date: August 26th, 2015
Start Time: 8:15AM

PONDEROSA ELEMENTARY SCHOOL
Phone: (406) 281-6218
Start Date: August 26th, 2015
Start Time: 7:55AM

RIVERSIDE MIDDLE SCHOOL
Phone: (406) 281-6000
Start Date: August 26th, 2015
Start Time: 8:30AM

SENIOR HIGH SCHOOL
Phone: (406) 281-5400
Start Date: August 26th, 2015 (Grade 9)
August 27th (Grade 10-12)
Start Time: 8AM

Back to School Community Welcome



Magnet with school information and vacation dates

Quarterly Attendance Tracking Calendars

Attendance Messaging and Class/Student Incentives

Attendance Tracker for

1st Quarter

My attendance goal is ___ out of 45 days this quarter.

August 2015						
Sun	Mon	Tues	Wed	Thurs	Fri	Sat
						1
2	3	4	5	6	7	8
9	10	11	12	13	14	15
16	17	18	19	20	21	22
23	24	25	26	27	28	29
30	31					

September 2015						
Sun	Mon	Tues	Wed	Thurs	Fri	Sat
		1	2	3	4	5
6	7	8	9	10	11	12
13	14	15	16	17	18	19
20	21	22	23	24	25	26
27	28	29	30			

October 2015						
Sun	Mon	Tues	Wed	Thurs	Fri	Sat
				1	2	3
4	5	6	7	8	9	10
11	12	13	14	15	16	17
18	19	20	21	22	23	24
25	26	27	28	29	30	31



Chronic Absence = 5+ absences

Warning Signs = 3-4 absences

Satisfactory Attendance = 2 or fewer absences





This is How We Do It

Indian Education Billings Public Schools

Team

Home to School Coordinators (9), Administration, Counselors, Families

Data

Weekly Student Attendance & Grades

Practice

Individual Intervention Plans, Home Visits

Family Engagement = Advisory Committee & Family Nights

American Indian High School 101 – 2 weeks prior to 9th grade

Van Service for 4 South Side Schools & Taxi Cabs for Homeless Families

Celebrate

8th Grade Promotion, Graduating Senior BBQ



This is How We Do It

Polson

September Awareness Month - Big push, student news stories

LINK - Attendance focused meetings, Peer to Peer “LINK Alerts”

Popsicle Days - Thank kids for coming!

Ronan

Attendance & Graduation Coach

Worked in community to bring kids to school. Found most effective strategies happened IN SCHOOL - credit recovery support, study skills

Wolf Point

Parent Engagement Incentives - Gift cards for attending & volunteering

Work with Tribal Government - Coordinated approaches to family support & accountability - punitive responses *not* most effective



RESOURCES



<http://www.attendanceworks.org/>



<http://awareness.attendanceworks.org/>



http://graduationmatters.mt.gov/resources.html?gpm=1_3