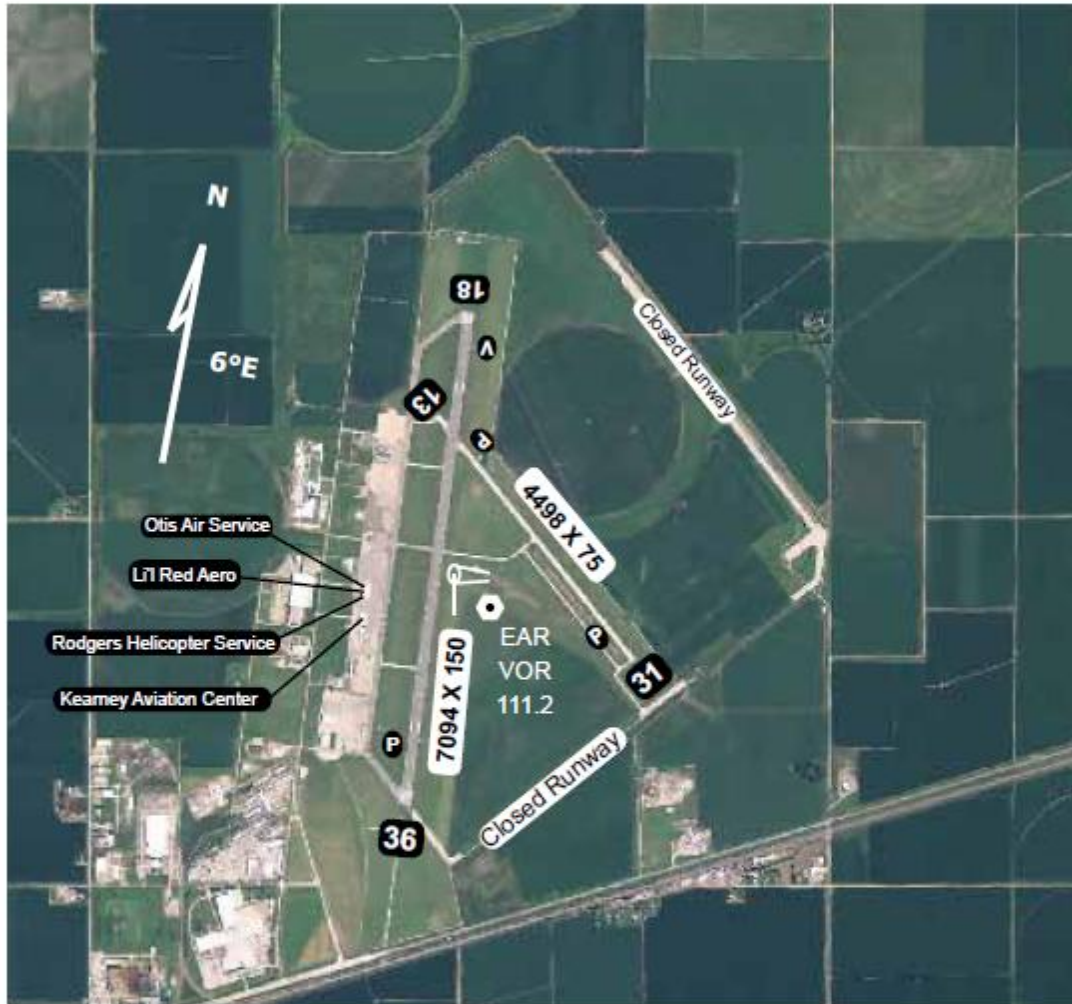


Kearney (EAR)

Elevation 2131'

AWOS III 123.875 (308-237-5608)	Minneapolis Center 119.4	CTAF 123.0 L
------------------------------------	-----------------------------	------------------------



Runway	Surface	Traffic Pattern	Runway Lights
18 / 36	Asphalt	1000-LH / 1000-LH	HIRL
13 / 31	Concrete	1000-LH / 1000-LH	MIRL
Airport Manager	Jim Lynaugh		308-234-2318
FBO's			
Otis Air Service	308-237-2111	(After Hrs. 402-206-6433)	
Kearney Aviation Center	308-233-5800	(After Hrs. 308-520-4209 or 308-236-2025)	
Rodgers Helicopter Service	308-234-3948	Li'l Red Aero	308-234-1635
Fuel	100 LL & Jet A	Attended	0600 - 2000

Kearney Regional Airport

N 40 °43.62' W 99 °00.41'