

TOP PRIORITY PROJECTS:

1. Water & Sewer
2. Suicide Prevention Program
3. Safe Homes
4. Housing Development
5. Yupik Language Program
6. Teach & Record Traditional Skills
7. Job Trainings
8. Build a Tannery
9. Multi-Purpose Evacuation Center
10. Fire Department

ADDENDUM ADDED JULY 11, 2014



Stebbins

Tapraq

“Low land with beach grass”

COMPREHENSIVE PLAN

July, 2012

TABLE OF CONTENTS

EXECUTIVE SUMMARY	3
LOCATION	3
CLIMATE	4
HISTORY AND CULTURE	5
CULTURE AND SUBSISTENCE	8
SOILS AND GEOLOGY	9
FACILITIES	9
ECONOMY AND STATISTICS	11
COMMUNITY OF STEBBINS VISION	18
THE 2012 COMPREHENSIVE PLAN	23
PLANNING GOALS	23
RECOMMENDATIONS	24
INFRASTRUCTURE GOALS	25
DEVELOPMENT PROJECTS	32
STEBBINS CONTACTS	41
JOINT RESOLUTION	42
AIRPORT PLAN	A-1
AREA MAP	A-2
DETAIL MAP 1	A-3
DETAIL MAP 2	A-4

EXECUTIVE SUMMARY

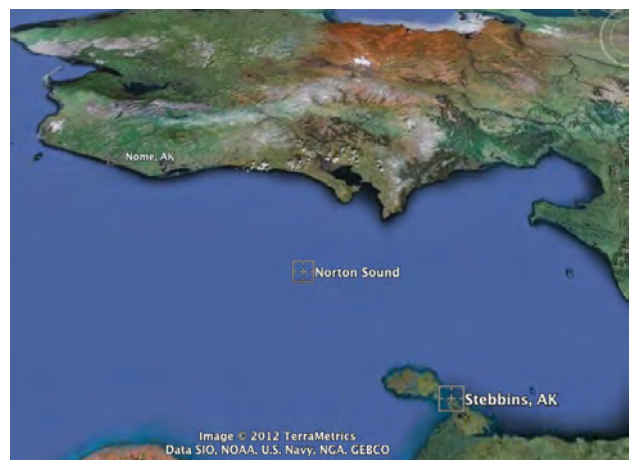
In 2001 the community of Stebbins updated its 1998 Local Economic Development Plan for Stebbins with the Stebbins Community Economic Development Strategies 2001-2005. In 2004 the Local Economic Development Plan Stebbins 2005-2010 was generated, supplanting the 2001 plan. The 2004 development strategy identified priority community development projects. Since 2004 some of Stebbins development goals have been met, such as new housing, some projects are in different stages of development and some await action. New projects have been added as the community's goals and outlook evolve over time.

In 2012 Tryck Consulting was retained by the Stebbins Community Association, the City of Stebbins and the Stebbins Native Corporation to prepare a Comprehensive Plan for Stebbins to complement the above documents and identify and clarify the Community of Stebbins's goals and priorities.

The Stebbins Comprehensive Plan 2012 updates, reaffirms and identifies new community goals, in a conceptual plan for continuing and moving forward with projects envisioned by the community. This plan is a guide for present and future development that meets the community's goals and vision.

LOCATION

Stebbins is located on the northwest coast of St. Michael Island, on Norton Sound. It lies 8 miles north of St. Michael and 120 miles southeast of Nome. The community lies at approximately 63.522220° North Latitude and -162.288060° Longitude. (Sec. 02, T023S, R019W, Kateel River Meridian.) Stebbins is located in the



Cape Nome Recording District. The area encompasses 35.2 sq. miles of land and 1.7 sq. miles of water.

CLIMATE

Stebbins is a coastal community on the Bering Sea and enjoys a maritime



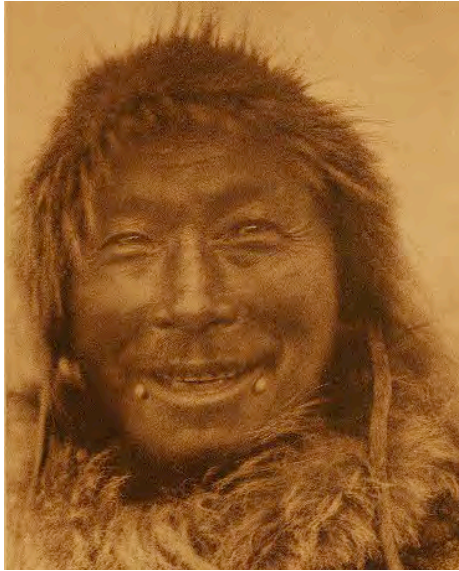
environment. The community is ice-free from mid-June to November. Clouds and fog are common. In summer temperatures average between 40 and 60 °F. Winter temperatures range from -4 to 16 °F when the community is ice-bound. Extremes have been measured from -55 to 77 °F. Annual rainfall averages 12 inches, with 38 inches of snowfall.

HISTORY AND CULTURE

For at least a thousand years, reaching back in time from the present day, Yupik people have lived on the coastal regions of the Bering Sea, from the Bering Strait south, along the Seward Peninsula and the Norton Sound coast to the mouths of the Yukon and Kuskokwim Rivers and beyond into Bristol Bay.

The Norton Sound Yupik lived in small coastal communities centered around one or two extended families. Homes were build partially underground and above ground sparingly with wood, both for warmth and for lack of wood other than drift wood along the treeless coastline. Men and boys lived in the community house, women and girls in the family home.

The mainstay of the Yupik Eskimo diet was(is) salmon. For four months of the year, the summer months, Yupik Eskimos



harvested salmon with gill nets on the beaches, drift nets on the rivers, from weirs and willow traps in the streams and with short poles and sinew lines from kayaks. The diet was balanced with birds eggs, herring and fresh shoots in spring; a variety of fresh greens and tubers in summer with a late summer and fall busy with the gathering of a variety of plentiful, sweet berries. Moose, caribou, beluga, seal, the mollusks and fishes of the tidal zone and the plenty of the tundra and uplands filled out the diet. The skins of all creatures, some raw, some tanned,

provided the coverings for everything from feet and clothing for festive occasions to temporary shelters and all manner of skin boats.

And so it went from generation to generation. Yupik men taught boys the skills and ways of men, women taught girls the skills and crafts of women. The work of the culture and community was shared along these lines. Women taught their skills and told their stories to their daughters in the home, men taught their skills and told their stories to their sons in the Qasaq, the men's house. This way and were maintained from generation to generation. Everyone was equal. Those who excelled were honored and shared their plenty, those who did bad things were shunned and banished. Authority rested loosely in the hands of the respected leaders and elders.



The area currently occupied by Stebbins today was home to two Yupik communities, Atrivik, "place to descend to" at the foot of the bluffs of Cape

Stephens (Teruq), and Penguq, “a hill”, on coastal promontory “Sourdough Point” perhaps 2 miles south of Atrivik.

In September, 1778, Capt. James Cook, sailed south after a wall of ice north of the Bering Strait ended his efforts to find an ocean passage from the Pacific to the Atlantic. Now it was his intent to chart the unknown and unmapped Alaska coast from Bering Strait to Cape Newenham, far to the south in Bristol Bay.

On the 15th he anchored off of “Chaktoole” (Shaktoolik) where he was protected from the north easterly winds. On the 16th the crew went shore, half to haul water and gather driftwood the other half to pick berries.

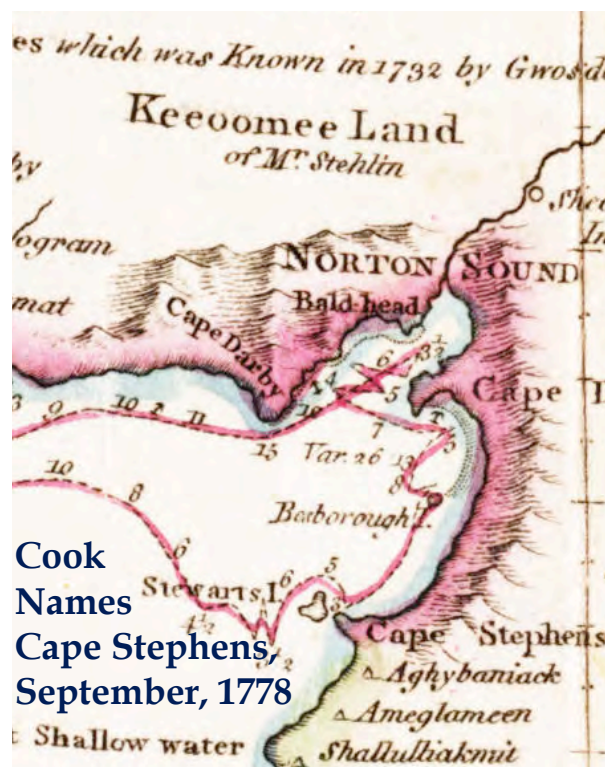
Cook noted, “The dwellings of these people were seated close to the beach. They consist simply of a sloping roof without any side walls, composed of logs, and covered with grasses and earth. The floor is also laid with logs; the entrance is at one end; the fireplace just with it; and a small hole is made near the door to let out the smoke.”



HMS Resolution left its Shaktoolik anchorage on the 18th and that evening anchored just west of high bluffs which Cook named Stephens Point, after the First Secretary of the Admiralty, Phillip Stephens, who was responsible for keeping the Royal Navy bureaucracy running smoothly for England’s commanding admirals. For good measure, Cook named the island a mile and half west of Cape Stephens for John Stuart, the auditor of the funds allocated to the Royal Navy.

Cook didn’t transit Stephens Pass in his journey south. Rather than risk shallows, Cook sailed north of Stuart Island, sounding. On the 19th the

Resolution headed westerly, keeping the continent and “Point Shallow Water”(Point Romanof) in sight, off his port beam. Later in the day he encountered muddy water and surmised “a considerable river runs into the sea in this unknown part,” the first known European reference to the Yukon River.



The Resolution was driven westerly by a fierce storm to St. Lawrence island where Cook turned southerly, passing St. Mathew island and arriving at Unalaska on October 2nd, on his way to Hawaii for the winter, leaving Alaska uncharted from Stuart Island to Cape Newenham.

In 1833 Captain Mikhail Tebenkov, Imperial Russian Navy, established Mikhail Redoubt as the northern anchor for the Russian America Company's proposed inland trade route between the Kuskokwim River, Yukon River and Norton Sound, via the Unalakleet portage. Tebenkov found a protected anchorage 8 miles east of Cape

Stephens where he established Mikhail's Redoubt, anchoring the northern limit of the Company's fur trading territory.

From that point forward St. Michael Redoubt served as the point of trade for western goods--iron implements, tools, cotton and wool fabrics, firearms, tea, flour and sugar--the goods of the fur trade.

Local Yupik oral tradition tells of Russian efforts to extend their occupation to Cape Stephens. This effort was prevented by force in a battle below the Cape Stephens bluffs in which 6 Russians were slain by an alliance of Yupik warriors from the surrounding settlements.

St. Michael redoubt was fortified, but its proximity to Cape Stephens was a boon to its Yupik residents in Atravik and Penuq. They had a short 7 mile trip overland to the the redoubt where trade goods could be obtained. Proximity to western goods was important and the Eskimos of the Bering Sea recognized this.

In 1867 Russia sold Alaska to the United States and the Russian America Company became the U.S. owned Alaska Commercial Company. Upon the discovery of gold on the upper Yukon in the 1890's, St. Michael became a busy commercial supply port for Yukon river steamboat trade.

Around 1900, a group of Nelson Island Eskimos traveled 300 miles north by kayak to explore the possibility of moving closer to this activity. They met with Atravik Eskimos and asked if they could settle on the land between Atravik and Penuq.

At this time the settlements of Atravik and Penuq were separated by two miles of low lands utilized for subsistence gathering for Atravik people, a small community of two extended families. Eggs, birds, small fishes, small animals and plants were essential components in the Yupik diet. Local oral history relates that permission was given and the Nelson Islanders' settlement was called Tapraq. Over time Atravik and Penuk Eskimos were assimilated into Tapraq.

The name Stebbins supplanted Tapraq early in the 20th century. It is reported locally that "Stebbins" was easier to pronounce than "Stephens" for its Eskimo people. Soldiers from St. Michael, traveled to "Stebbins" following the "Great Sickness" of 1900 to bury the dead. During the first half of the twentieth century there were no stores in Stebbins, because of its proximity to St. Michael. There was an additional migration of families from the Yukon-Kuskokwim Delta region to Stebbins, following the influenza epidemic of 1918-19.

In the 20's and 30's Stebbins began the transition from traditional Eskimo homes to western style buildings, constructed of wood above ground. The name "Stebbins Village" was published in the 1947 Coast Pilot. The population of

Stebbins, whose livelihood was listed as fishing, hunting and reindeer herding, was 108 in 1950. A school was established in Stebbins that year. A school building and National Guard Armory were built in 1959.

The first store opened in Stebbins in 1950. St. Michael's importance dwindled with the rise of Nome to the north and the diminishing role of the Yukon as the only supply route to the interior goldfields with the completion of the Alaska Railroad in 1923.

The airplane's role in bush travel grew through the early twentieth century. Early bush pilots landed at Stebbins in the bay on floats or skis and on the beach. Stebbins's first runway, built in the 1960's on what is now First Avenue, was later moved to its present location.

Stebbins was incorporated as a second-class city, located in the Norton Sound Recording District, in 1969. Stebbins's population is 817 (DCED 2010).

CULTURE AND SUBSISTENCE

Stebbins is a Yupik Eskimo village with a traditional subsistence life style. The Community depends heavily on its subsistence activities. Salmon, herring, seal, sea lion, beluga, walrus, ducks, geese, moose and caribou are among the species harvested. Bird eggs are gathered in early summer, berries in late summer and fall. Traditional foods are processed and stored according to custom for year round use. Fur bearing animals are trapped in winter. The sale and importation of alcohol is prohibited.

Fishing for Tom Cod



SOILS AND GEOLOGY

The community of Stebbins is located on an island of quaternary/tertiary volcanic origin. The upland topography's dominant feature is dormant volcanic cinder cones, some with crater lakes of indeterminate depth, with overlying materials ranging from finely weathered residual soils to rocks composed of fine grained olivine basalt rock of volcanic origin.

The organic overburden varies in thickness from up to two feet in less well drained areas at lower elevation to less than one foot on the steep uplands. Bedrock is exposed on Stephens Hill and Stuart Island.

The lowlands are dominated by marsh, lakes and connecting waterways, many in the tidal zone or influenced by high-water events.

FACILITIES

City of Stebbins

The City of Stebbins is a second class city providing community water and sewer utility service, emergency services and street and road maintenance.

Community water is obtained from Big Clear Lake, 3 miles east of Stebbins. During the summer months, water is pumped from the lake and carried to Stebbins via a 4 inch pipeline and stored in a 1,000,000-gallon and 500,000-gallon steel water storage tanks.

The Stebbins water treatment system has a peak day design capacity of 10,000 to 50,000 gallons per day. The system uses a single unit bag filter as well as granular media to filter the raw water. The system uses hypochlorite to disinfect the water and then stores it in a water storage tank. The water treatment plant employs a primary water treatment operator.

There is a central water distribution point at the washeteria, distributed from the tanks via plastic pipeline. The washeteria is operated by the City. The community continually experience water shortages during in late winter and water is hauled by truck from Clear Lake to make up the shortfall, at the same time water is rationed.

Sanitary sewage is collected in the homes in 5 gallon buckets(below left) and carried by hand to centrally located steel framed plastic collection bins which are trailered to the sewage lagoon, adjacent to the landfill, with a 4 wheeler(below). This is a deplorable, unsanitary situation. There is overflow and spill onto the streets further compounding the problem. In addition, there is no system for gray water which must be managed on sight by the homeowner.



Honey-bucket, above, at Stebbins Elder Housing Center. Flush toilet, left, remains sealed and unused years after construction.

Human waste in plastic bags is deposited in collection bins, right, and hauled by 4-wheeler 2 miles to the sewage lagoon.



The Alaska Department of Environmental Conservation (ADEC) has approved the landfill for use. Solid waste is collected by the city from centrally located wooden trash bins and hauled to the landfill by a loader with a dump bed.

The Norton Sound Health Corporation and the the City maintain and operate the Tapraqmuit Yungcarviat Clinic, the health clinic in Stebbins. The clinic is a qualified Emergency Care Center.



Emergency services are provided by certified health aides. However, during severe cross-wind conditions at the Stebbins airport, critical patients must be transported 7 miles by road for air evacuation from the St. Michael runway. There are no emergency vehicles for this purpose.

Bering Straits Regional School District

A new K-12 school was completed Stebbins in 1989. There are currently 210 students and it is one of the largest village schools on Norton Sound.

Stebbins Community Association (SCA)

Stebbins Community Association, is a federally recognized Tribe under the Indian Reorganization Act of 1937. SCA managed programs include EPA programs, Head-start(with the City), Food Bank, Johnson O'Malley Act bi-lingual program, Indian Child Welfare Act (ICWA) Program.

The Stebbins Housing Authority (SHA), a subsidiary within SCA, manages



Stebbins Elder Housing 5 Unit Complex

Stebbins HUD housing program. One of the most successful village Tribal housing programs in Alaska, SHA has constructed the Stebbins Community Center(SCA

offices building), the 5-unit Stebbins Elder Housing complex, 11 new single family homes and a 4 unit apartment. SHA is currently building the infrastructure for its Arrsauyaq Subdivision, that, when completed, will provide access to 33 additional lots for home construction, helping to ease the critical housing shortage in Stebbins for Tribal members.

Stebbins Natives Corporation (SNC)

SNC owns Tapraq Fuel which operates Stebbins’s fuel storage tanks and petroleum products. SNC provides retail sales of gasoline, heating oil and other petroleum products.

Stebbins Native Store: SNC owns and operates the Stebbins Native Store, through ANICA. Stebbins Native Store is the sole community outlet for groceries, retail goods and hardware.



Stebbins Native Store retail clerk Charlotte Coffey, above, Store Manager Ron Kirk, left

It is the largest private employer in Stebbins.

Stebbins Rock Products: SNC owns Stebbins Rock Products, Inc (SRP), an independent subsidiary. SRP operates two gravel pits and a rock quarry providing a full range of rock products, from armor rock on down in size, meeting state and federal specifications as may be required, for both local use and off island construction projects.



An air rack rock drill, above, contracted by SRP, drills holes to be loaded with explosives for SRP's 2011 test blast breaking out 5,000 cubic yards of rock products for market, establishing the high quality of SRP rock products.

Alaska Village Electric Association

AVEC operates Stebbins's electric utility, providing service from its generation plant in downtown Stebbins.

Transportation

Stebbins is accessible by air and sea, and overland by snow machine in winter. There is a state-owned 3,500' long by 60' wide gravel runway. Regular flights, charters, and air freight services are available from Nome and Unalakleet.

Barges bring fuel and goods to the beach as may be required during the ice-free months.

State of Alaska

The State of Alaska owns and operates a 3,500 ft. lighted gravel runway and parking apron. The State plans to upgrade the facility. See A-1.

ECONOMY AND STATISTICS

Stebbins is a coastal community with an economy based on government services--City, School and Tribe--followed by retail sales and trade, the seasonal construction industry, commercial fishing and subsistence.

According to Census 2010, there were 153 housing units in the community and 134 were occupied. Its population was 95.3 percent American Indian or Alaska Native; 4.3 percent white; 0.2 percent black; 0.2 percent Asian;

The 2006-2010 American Community Survey (ACS) estimated:

- 137¹ residents as employed.
- The public sector employed 15.3%¹ of all workers.
- The local unemployment rate was 27.1%¹.
- The percentage of workers not in labor force was 36.5%¹.
- The ACS surveys established that average median household income (in 2010 inflation-adjusted dollars) was \$31,250 (MOE +/- \$4,258)¹.
- The per capita income (in 2010 inflation-adjusted dollars) was \$8,552 (MOE +/- \$1,767)¹.
- About 35.6%¹ of all residents had incomes below the poverty level.

¹ All ACS statistics are published with their respective margin of error (MOE). Some of the statistics here are calculated from the original ACS data. The MOE was unable to be carried through the calculations.

Worker Characteristics

	2010
Residents age 16 and over	352
Residents employed	236
Female workers	117
Male workers	119
Workers age 45 and over	71
Workers age 50 and over	52
Total wages	\$3,148,884
Sector employed in	
Private	79
Local government	156
State government	1
Peak quarterly employment	182
Workers employed all 4 quarters	111
New hires	130
Unemployment insurance claimants	90

Source: Alaska Department of Labor and Workforce Development, Research and Analysis Section

2010 Top Occupations 2010 Workers by Industry

	Number of workers	Percent of total employed	Female	Male	Age 45 and over	Age 50 and over
Construction	2	0.8	0	2	0	0
Trade, Transportation and Utilities	11	4.7	4	7	2	2
Information	2	0.8	0	2	1	1
Financial Activities	10	4.2	2	8	4	4
Educational and Health Services	26	11.0	21	5	8	3
Leisure and Hospitality	1	0.4	0	1	0	0
State Government	1	0.4	1	0	1	1
Local Government	156	66.1	82	74	47	40
Other	27	11.4	7	20	8	1

Source: Alaska Department of Labor and Workforce Development, Research and Analysis Section.

2010 Top Employers

Stebbins City Council
Bering Strait School District
Rural AK Comm Action Program
Stebbins Native Store
Stebbins Community Assn.
Norton Sound Health Corp
Kawerak Inc
Stebbins Housing Authority
Bering Straits Reg Housing Authority
Norton Sound Economic Development

Population Estimates

Year	Population
2000	547
2001	595
2002	580
2003	559
2004	575
2005	579
2006	591
2007	572
2008	549
2009	574
2010	556
2011	585

Source: Alaska Department of Labor and Workforce Development, Research and Analysis Section.

Tax Revenue 2010

	Tax revenue
3% Sales Tax	\$66,161

Source: [Alaska Department of Commerce, Community, and Economic Development, Office of the State Assessor.](#)

2010 Census Age and Sex

	Total	Male	Female
Total	556	278	278
Under 5 years	80	41	39
5 to 9 years	68	33	35
10 to 14 years	61	31	30
15 to 19 years	58	29	29
20 to 24 years	41	21	20
25 to 29 years	44	20	24
30 to 34 years	40	17	23
35 to 39 years	25	15	10
40 to 44 years	17	11	6
45 to 49 years	29	12	17
50 to 54 years	27	14	13
55 to 59 years	26	15	11
60 to 64 years	21	14	7
65 to 69 years	9	3	6
70 to 74 years	4	1	3
75 to 79 years	2	0	2
80 to 84 years	2	1	1
85 years and over	2	0	2
Median age			
Both	Male	Female	
21.5	21.5	21.5	

Race

	Number	Percent
White	24	4.3
Black	1	0.2
American Indian/AK Native	530	95.3
Asian	1	0.2
Pacific Islander	0	0.0
Other	0	0.0
Two or more races	0	0.0

Household and Family Size

Average household size	4.15
Average family size	4.52

Vacancy Rates

Total housing units	153
Homeowner vacancy rate	0.0%
Rental vacancy rate	0.0%

Source: Alaska Department of Labor and Workforce Development, Research and Analysis Section.

COMMUNITY OF STEBBINS VISION

The vision of the community of Stebbins is the community's purpose for existing. The vision gives the community leaders direction to decide what Stebbins will be like in the future. This vision is drawn from community planning surveys conducted by the Stebbins Community Association, public meetings where the community at large expresses itself individually and through the three governing bodies in Stebbins, the Stebbins Community Association, Stebbins Native Corporation and the City of Stebbins.

The vision of the community of Stebbins is the community's expression of itself and what it wishes to become in the future. It provides guidance, direction and focus to strengthen Stebbins' ability to achieve its goals.

Health and well being are foremost in Stebbins vision of its future. Stebbins residents do not live in a healthy environment. The community has neither a municipal water distribution nor a sanitary sewer discharge system. Human waste is hauled from the home in open buckets to collection points. Water is carried to the home by homeowners from a single community tap at the washeteria. Stebbins' vision is of a time when water is turned on by handles above the sink, and flush toilets carry human waste away.

Stebbins is a coastal community. Residents look to a time when a seawall will provide protection from storm flooding, when access roads and emergency facilities are above high water events, when dusty roads are replaced by dust free community streets with more sustainable facilities and vibrant commercial enterprises. Stebbins wishes to continue to grow and develop in an economically, environmentally and culturally sustainable way.

Nature and the Environment are very important to Stebbins residents. They care greatly about their natural setting, its scenic environment and the land and sea that surround them. They will strive to protect this environment and their lifestyles within it, particularly subsistence and village life with the highest regard for family, home and environment.

Yupik Culture is central to Stebbins's residents. Stebbins wishes to



Stebbins Eskimo Dancers, below, host Kotlik Dancers right, at a gifting Potlatch in Stebbins



strengthen its Yupik Eskimo culture and incorporate its positive influences in Stebbins. Stebbins is the largest Eskimo community on Norton Sound. Stebbins wishes to provide guidance and leadership in the region through a strong and viable Yupik culture.

Stebbins residents are proud of their accomplishments and first among these are those that are economically sustainable. This is a Stebbins priority. Stebbins has two new offices buildings for Tribal and corporation business and activities, a new rock products quarry, 8 new homes, 4 apartment living units, Arrsauyaq Subdivision with street access to 17 new lots for housing construction, an elder housing complex, infrastructure improvements which include a new new tank farm a new electric power plant with an inter-tie between Stebbins and St. Michael which will reduce power costs in both communities. A



Stebbins Housing Authority constructs Qasutaq Street in Arrsauyaq Subdivision

meteorological tower is in place measuring wind frequency and velocity. Preliminary results are encouraging for adding wind generators(windmills) to the power grid, further reducing electricity costs to the rate-payers.

The three governing bodies in Stebbins are the Stebbins Community Association, the City of Stebbins and Stebbins Natives Corporation. They are entrusted by the people to manage Stebbins's affairs on a daily basis and guide them to the future. Their Tri-Agency Council meets regularly to discuss goals and projects and coordinate their efforts to achieve them. Their continuity of vision, common goals and coordination are a source of pride for the community.

It is the vision of Stebbins that its residents will continue to strive to:

- Preserve their natural heritage and culture
- Encourage strong Tribal values and leadership
- Maintain a healthy community
- Participate collectively, individually and through the offices and boards of the three Stebbins entities to help Stebbins achieve its goals
- Participate in the education of its children to insure that the combination of traditional culture and positive western values are taught to Stebbins's youth
- Participate directly in the community's growth by providing input and guidance
- Promote, encourage and support sustainable economic growth for Stebbins residents
- Develop opportunities for the community to increase its economic independence

The community of Stebbins will strive to grow in the following manner:

- Obtain running water and flush toilets with the appropriate water and sewer infrastructure

- Continue to develop Stebbins Rock Products as an anchor commercial enterprise in the Stebbins economy
- Build and improve streets and roads
- construct a seawall to protect the community from storm driven ocean floods and ice
- Complete the upgrade and replacement of Stebbins bulk fuel storage facilities
- Continually improve and upgrade Stebbins Web access and internet service.
- Construct Stebbins' new electric power generation plant, connect Stebbins and St. Michael by inter-tie and augment this system with wind generated power
- Construct housing and provide opportunity for housing expansion through making new lots available with streets and utilities and new subdivision development
- Create new jobs and opportunities
- Strengthen community involvement in the management of its resources
- Strengthen local human resources through education and training so Stebbins work force can effectively meet the future specific needs of Stebbins
- Encourage, support and broaden the cultural component in educational and social activities

The community of Stebbins's goals include:

Jobs

- Provide job opportunities to keep young adults working in Stebbins. They are Stebbins's leaders for tomorrow.
- Improve opportunities with federal and state agencies, USFWS, ADF&G, etc., for Stebbins workers in Stebbins related jobs.
- Make job creation and retention a factor in commercial activities
- Provide job training specific to Stebbins employment needs that increases local hire in Stebbins.

- Emphasize job sustainability and retention to keep workers employed in Stebbins.

Education and School

- Education is the foundation for Stebbins future. The most important educational component in Stebbins is its school, the place where the foundations for Stebbins future is set.
- Work to establish a dynamic relationship between the Stebbins community school board and the Stebbins school to achieve the best results possible for Stebbins current students and future leaders.
- Work with the school to develop and add an elective diversified occupations program so students can be better prepared to work with community organizations and government entities.
- Work with the Stebbins school to engage students in on-the-job training.
- Curricula are established at the district level. Communicate with the school to provide input to Bering Straits School District to incorporate changes to the curriculum, including adding appropriate state government programs developed specifically for rural schools in Alaska.
- The Yupik language is an important component of Stebbins history and culture. Work with the Stebbins school staff to improve its Yupik programs.
- Include a student as non-voting members on all village boards, commissions and councils, with students receiving 50% of stipend amounts. Adapt curriculum to address this community need.
- Add elders, with a stipend, as non-voting and advisory board members.
- Encourage more local involvement in programming and education decisions so Stebbins students Increase their cultural, traditional, Yupik language and regional studies skills.
- Upgrade and improve internet service in Stebbins whenever possible

Culture

- Bring Elders and Youth together to teach tomorrow's leaders through:

- Youth leadership activities, Elder/Youth camping trips and mentoring programs
- Cultural preservation promoting arts and crafts
- and cultural heritage

Parks and Recreation

- Develop community garden plots to test composting and soil enhancements for growing vegetables and root crops.
- Develop community greenhouse utilizing surplus heat from the power plant.
- Improve trails with environment protective matting and bridges.
- Recreation for youth:
 - Basketball court
 - New recreation hall
 - Playgrounds
 - Sports fields
 - gymnasium

THE 2012 COMPREHENSIVE PLAN

The 2012 Comprehensive updates previous plans, most recently, in 2004 the Local Economic Development Plan Stebbins 2005-2010 was generated, supplanting the 2001 plan. The 2012 Comprehensive Plan validates some of those earlier goals and recommendations, modifies others and introduces new ones to meet the community of Stebbins' currently projected development needs into the future. The 2012 Comprehensive Plan identifies projects that have moved into advanced stages of development. In some cases the needs of these projects have changed, and are recognized here.

PLANNING GOALS

- Secure a municipal running water and sanitary sewer systems for the Community of Stebbins
- Put in place emergency services in Stebbins that meet acceptable standards.
- Construct emergency services facilities with sufficient space for emergency rescue vehicles, fire vehicles, training, storage and offices.
- Relocate, consolidate and upgrade bulk fuel storage and electric generation facilities
- Strengthen and develop Stebbins's Yupik cultural ties
- Upgrade and expand Stebbins's transportation and utility infrastructure to serve a growing community
- Provide bus service for students and the community
- Concentrate facilities and activities in areas where similar activities and facilities already exist to maximize use of limited land and increase efficiency through centralization and shared use.

RECOMMENDATIONS

Land Use Areas

Housing

- Group new housing areas in and adjacent to Stebbins Heights to provide for economical utilities distribution and access road construction.

Utilities/Services

- Separate community service functions generating potential noise, odor and/or unsightly conditions from all other land uses.
- Group service functions when possible to facilitate efficient use by maintenance staff.

- Extend electric power for community expansion to new subdivisions and facilities and designate rights of way and easements for this purpose.
- Incorporate alternative power sources, wind generation and hydro electric, into the Stebbins grid.
- examine the potential for thermal power in Stebbins

Community Facilities

- Relocate existing and locate new public safety facilities above the 100-year flood plane to make them less vulnerable during natural disasters.

Commercial Facilities

- Provide commercial rock products to contractors for projects in Stebbins, Norton Sound and the greater Bering Sea community, as an anchor industry for the community. Designate rock resource areas for industrial use.
- Re-locate the reindeer corral to a better location between St. Michael and Stebbins, near the Koyuk River.

Other Recommendations:

Stebbins employment is dominated by programs, for the most part, funded by federal and state agencies managed by the City and Tribal governments. Stebbins does not have a work force trained to this kind of administrative work. Stebbins would gain greatly if the community and the school could work together to better prepare students to fill this void.

Governance

Stebbins community can achieve more for the community through the combined efforts of its 3 entities. Each entity has strengths and abilities that complement each other. Working together yields greater results for the community. In order to achieve this:

- the City of Stebbins, the Stebbins Community Association and the Stebbins Native Corporation will hold quarterly scheduled meetings of their combined boards of directors.

- On a monthly basis representatives of each entity will meet and discuss of the status of projects each has underway.

Administration

Stebbins is not able to meet its growing need for residents with the training in the administrative tasks required of a rural Alaskan community whose federal and state funded programs, managed by the City and Tribe, require these skills. In order to close this gap so the community can grow and manage its programs, staffed with trained local workers, Stebbins will:

- work with the school to:
 - offer high school students education in the basic fundamentals of administration in bush Alaska.
 - implement a program where a high school student is appointed to each community board, commission or council as a non-voting member, receiving half the stipend paid elected members to meet, in order to gain experience and training in the function of the village work force.

INFRASTRUCTURE GOALS

Community Sewer System

The residents of Stebbins use 5 gallon honey buckets for human waste and dump them into collection receptacles located through out the community. Buckets, often brim full, are hauled one at time to collection bins which are trailered to the sewage lagoon by 4-wheeler, often resulting in spillage along streets and roads during the haul to the lagoon.

There are functioning septic system drain fields for the school complex, including teacher residences, corporation apartments and laundromat. Explore alternative, environmentally sound ways to obtain a sanitary sewer system that provides flush toilets for Stebbins families.

The community of Stebbins will work with any and all agencies and design firms that can offer solutions to achieve this important goal.

Water System Renovation and Upgrade

The community water supply originates at Clear lake, a volcanic crater lake, 4 miles NE of Stebbins. Water is pumped at the lake into a 4" line in 12 " insulated pipe, 4 miles long. Twice a year, spring and fall, water is pumped into two community tanks in Stebbins' 1,000,000 and 750,000 gallon tanks. The tank capacity is insufficient for the community and the water supply is rationed every year until the system is thawed and water can be pumped to re-fill the tanks.

- provide a consistent community water supply, including adding additional water tank storage capacity so the community does not run out every spring and will have sufficient water for its needs, include emergency services, such as fire fighting.

Solid Waste

The City operates and maintains a solid waste disposal site. Currently solid waste bins of plywood construction are centrally located throughout the community and emptied using a loader.

- replace plywood collectors with metal bins with lids.
- acquire bin-dumping truck or mechanism for loader to dump steel bins.

Transportation

Stebbins has a State owned 3,500 ft. runway. Regularly scheduled air service to Stebbins is available from Unalakleet and Nome. A variety of skiffs, cars, trucks, ATV's and snow machines are used locally for transportation. Freight is flown to Stebbins year round and shipped by sea during the ice-free months, generally June through October. A 7 mile long all season gravel road connects the communities of Stebbins and St. Michael.

Stebbins has critical needs in its transportation infrastructure. Its city streets are not adequately drained and they flood every year. Stebbins is prone to storm flooding and its one road access to high ground and safety is prone to flooding. Streets need upgrades. The airport is insufficient for larger commercial aircraft. The runway needs to be lengthened and upgraded so

larger aircraft can better serve the community with its growing needs. The community needs a passenger/freight building for protection from the weather. More than 2 million pounds of airfreight come into Stebbins, it needs protection from the weather as well.

Sea Wall

Stebbins has identified important projects associated with Stebbins' waterfront needs. A sea wall is needed to protect the community from storm generated flooding. The new runway can serve as a dike against storm flooding through the low lands south of Stebbins, and when linked to the sea wall will complete a barrier protecting Stebbins.

Dock Facilities

Stebbins rock quarry on Stephens Hill needs a loading facility on the shore north of the quarry location to accommodate deep draft barges. This will require a hydrological survey to identify the best location. When this is determined an engineering design and construction can follow.

Stebbins Airport

The Stebbins airport, owned and maintained by the State of Alaska, is an essential and important part of Stebbins's future and must grow and keep up with the community's needs. The State plans to upgrade the facility, see AIRPORT PLAN A-1. It will widen the runway to 150 feet, build a new parking apron and extend the runway length to 4000 feet. Stebbins is served by scheduled flights from Nome and Unalakleet.

Road System

Stebbins currently maintains an estimated 22 miles of local gravel roads including the streets in Stebbins, the road to the solid waste disposal site and the sewage lagoon and to SRP's rock products quarry and pits.

The 7 mile Stebbins--St. Michael highway connects the two communities and provides access to the Clear Lake water supply, the Stephens hill quarry, the landfill and sewage lagoon, the reindeer corral, gravel pits on Stephens Point,



and at the quarry, mile 2.5 on the highway, as well as access to subsistence activities. The electric power inter-tie will follow the highway. The Stebbins--St. Michael highway is an important element for Stebbins and its upkeep and maintenance are essential.

**Stebbins-St. Michael Highway
at Stephens Hill**

Update community BIA IRR inventory to include:

- Traditional historic trails
- Subdivision streets
- School access
- Deep water port access
- Dust abatement
- Drainage

Road system goals:

- Raise portion of Stebbins--St. Michael highway's first mile out of Stebbins, which is below the 100 year flood plane elevation, to provide secure emergency access to high ground during natural disasters
- Provide dust abatement in Stebbins and at the Airport
- Improve drainage in Stebbins
- Maintain the Stebbins--St. Michael highway
- improve/upgrade/surface Stebbins community streets
- provide signage and speed limits in Stebbins
- Provide reflectors/markers/permanent cairns on winter trails connecting Stebbins with Unalakleet and Kotlik

Electrical Power system

The community of Stebbins wishes to upgrade, improve and replace its



current electric generation system with more efficient, cost effective electric power generating technology, with the goal of reducing power costs in Stebbins. Stebbins is working with AVEC and the Denali Commission to expedite these projects. The new/upgraded power generation facility should be located in proximity to the new bulk fuel storage tank farm at the agreed location identified by the Traditional Council, Stebbins Natives Corporation and the City of Stebbins. Expand the power grid with poles and lines to connect new subdivisions.

New AVEC Power Plant under construction.

Alternative Wind, Geo--Thermal and Methane Gas

Stebbins wishes to further reduce its dependency on petroleum generated electricity with geothermal and wind generated electricity. An electrical inter-tie linking St. Michael to Stebbins eliminating duplicating service has been designed and awaits funding. Since that time Stebbins's road system has been extended to the proposed power plant site and the cost of petroleum generated electricity has risen sharply. These new developments warrant re-visiting this program. The Stebbins Community Association is currently pursuing funding to move the project forward.

Stebbins location on a volcanic island, whose dominant geographic features are cinder cones and crater lakes, is a prime target for geothermal energy. Exploring Stebbins' geothermal potential is a community goal.

Additionally, coal bed methane gas is a potential source of power in low-lying areas adjacent to the community.

Fuel Storage

The City of Stebbins, SNC, AVEC and the School have had separate tank farms. AVEC has taken the lead in consolidating bulk fuel storage in a new



New Tank Farm

facility provide full retail service. This project is currently under construction and due for completion in 2012. SNC will operate the new facility and provide tank storage space to AVEC, the school and the City. The project will include a new fuel header at the waterfront for off loading petroleum products and piping them to the tank farm for storage and distribution.

DEVELOPMENT PROJECTS

Infrastructure Projects

Water and Sewer

- A priority for Stebbins is to obtain a municipal sanitary water and sewer system to replace hauling water in to the home and human waste in honey-buckets out by hand. The community has been working to achieve this goal for two decades. The absence of running water and flush toilets greatly hampers the community's ability to provide a healthy environment with basic services. The agencies of government, state and federal, that

have assisted nearly every Village in Alaska to achieve this goal have not done this in Stebbins. Stebbins will pursue every avenue available so it can achieve this goal.

Communications

- Obtain dependable high speed internet with orderly, routine upgrades.
- Improve phones so 911 is the emergency dispatcher for Stebbins.

Air transportation and airport

- Upgrade and lengthen the runway to serve commercial, health, safety and future transportation needs.
- Construct a runway long enough to serve as a crosswind complement to the St. Michael runway.

Transportation

- upgrade and improve its maintenance and construction equipment to complete its transportation tasks by acquiring:
 - Dozer, grader, loader, excavator, dump trucks
- Dust abatement--surface Stebbins roadways and airport runway. Acquire a water truck for dust abatement in the interim.
- Construct Subdivision streets providing access for community expansion
- Provide foot access from Stebbins proper to Arrsauyaq Subdivision, Tribal and Corporation offices, with designated wooden walkway and stairs
- Improve night time and winter illumination with more street lights
- Provide transportation for seniors, an “elder people mover”
- Provide a school bus for kids,
- Provide local bus service including to St. Michael

Commercial Development Projects

Stephens Hill Gravel/Rock Quarry

- Develop the SRP quarry to expand and maximize its product sales.
- Secure the capital equipment necessary to support these operations
- Market quarry products for local construction and in the Bering Sea market

- Secure rock sales contracts
- Develop an alternative deep-water loading facility with direct access to the Stephens Hill quarry from the north shore.

Reindeer Operations

- Construct:
 - a new corral, more central to St. Michael, where the herd can reach 7-8,000 reindeer, making it feasible for Stebbins to export meat.
 - good fencing with 3 larger pens.
 - properly designed pens and chute.
 - a design based on reindeer behavior so reindeer don't realize they are caught. keep stress down and reduce injuries to fawns.
- a processing facility with a connex sized freezer and a small meat processing plant.
- Package and market reindeer horn, to benefit from the value added. Don't sell raw
- encourage local artists to work with reindeer products.
- process, tan and sell reindeer hide.
- market reindeer products for sale, after value has been added.

Guiding/tourism

- Increase local ownership and work opportunities in this field
- Provide trips(look at Gambel program for bird watching) to view birds, bears, sea mammals, and lots of wildlife.
- Offer fishing and guiding services
- Promote rural tourism

Local Arts and crafts

- Encourage and support local artisans and crafts people
- Assist them to market their products
- Host cultural events

Commercial Enterprises to encourage and support

- Restaurant
- new laundromat
- additional accommodation for visitors including hotel, B&B's
- Taxi-cab
- Garage/shop for repairs
- Storage, storage building
- Retail outlets—lumber, hardware, fishing supplies

Community Development Projects

Housing

- Renovation and rehab existing housing to improve life quality in Stebbins
- Continue to develop Arrsauyaq Subdivision, completing streets and extending infrastructure to lots, making them available for housing construction.
- Provide affordable housing for Stebbins elders.
- Provide assistance with affordable housing for Stebbins residents
- Continue the housing weatherization program

Medical Center/Clinic

Existing clinic facilities are no longer adequate for Stebbins needs. They need to be expanded and upgraded.

Health and Wellness

The Stebbins Wellness Program's goal task is to preserve cultural values and traditions while stimulating traditional values for education, promotion of economic growth and development. The community wishes to take a more proactive approach to health and wellness programs, by providing a template for achieving broader, more effective health and wellness, including diet and exercise and, more specifically in these critical areas, below.

Child Abuse

Understanding child abuse and providing counseling and education in the community will reduce the incidence of child abuse. The community seeks guidance, and funding for child abuse awareness and preventions programs.

Alcohol and Substance Abuse

Alcohol and substance abuse are problems in Stebbins. Young people are caught in the trap of trying alcohol and drugs and when apprehended often face incarceration in the criminal justice system. The community wishes to have more involvement in this process so youths with non-felony alcohol and substance abuse problems can be dealt with first, locally, through the Tribal Court System.

Domestic Violence/Women in Crisis

Understanding domestic violence and providing counseling and education in the community will reduce the incidence of domestic violence and abuse. This program needs funding.

Emergency Crisis Shelter

Stebbins is in critical need of a facility where women, children and those suffering from domestic violence can find shelter and protection on an immediate emergency basis. A network of care givers, available 24/7, must be available and on call. This is a critical need for the community.

Emergency Services and Public Safety Facilities

Stebbins has no public safety facilities. It has no fire truck and needs one badly. The community has no ambulance and is in need of one. The volunteer staff is in need of both EMS and fire training and certification.

A new facility is needed located above the 100 year flood plane. The facility will include heated bays for both EMS ambulance and Fire Service tanker/truck. It will have storage for additional emergency equipment including search and rescue and Hazardous Materials (Haz Mat), offices for EMS, Fire

and Police and a jail with two holding cells dedicated to minors so minor offenders can serve time locally.

- EMS/emergency services:
 - Training and certifications
 - Building, garage, storage, office
 - Vehicles
 - Community ambulance
 - EMS equipped snow machines, ATV's and boats

- Fire department/fire services:
 - Truck/tanker
 - firefighting equipment
 - Training and certifications
 - Building, garage, bays, storage, office space

- Police/VPSO
 - Training
 - Office
 - Vehicles
 - holding facility
 - Building, garage, bays, storage, office space
 - Equipment and turnouts

- Search and Rescue
 - ATVs
 - Snow machines
 - radio communications
 - emergency equipment packs for off road, 4 season use
 - winter trail safety shelter between Stebbins -- Kotlik, Unalakleet
 - winter trail markers for storms and blizzards
 - ✓ permanent cairns
 - ✓ poles with reflectors

Community Services & Facilities

Stebbins is in need of new facilities in addition to the Community Facility listed above, for public safety. The City government operates out of two cubby sized rooms in the Post Office/ Community Hall. These facilities are inadequate. The City needs a garage/shop. It needs five office spaces; administration, enterprise accounts, clerk, records room, and storage. Any of the facilities listed here could be incorporated in the new Community Facility or considered as stand alone projects

- Community Center needs
 - kitchen,
 - overnight apartments, serving 10-15 overnight guests at all times. visitors, transients, 5-10 units.
 - adequate office spaces,
 - large meeting area,
 - a facility above the 100-year flood plane,
 - multipurpose room/gym good for large gatherings and emergency shelter

- Cultural Center
 - Promote cultural activities--basket makers, carvers, artists and space for teaching traditional skills and values
- Teen Center/Boys and Girls Club
- Gift shop
- City Gym/Health and fitness center
- Internet cafe
- Community hall for weddings, funerals, potlucks, conferences
- Tribal court
 - The Tribal Court needs a meeting room and a dedicated “court room” and office facilities for staff and storage.
- Facilities for keeping juveniles locally in a “tough love” camp environment for teens to avoid early immersion into the criminal justice system.
- Child care facilities

Marketing

Stebbins has products for sale from armor rock to reindeer meat and arts and crafts that to date have only been available in the limited, local market. A Stebbins Web site, through which goods can be made available to the broader community that shops on the world-wide web would be an important step to take.

- work with the school and its students to create, manage and operate a top quality Stebbins Home Page providing greater access to bigger markets.

Stebbins Contacts

Stebbins Community Association
P.O. Box 71002
Stebbins, AK 99671
Phone 907-834-3561
Fax 907-934-3560
E-mail stebbins_ira@yahoo.com

City of Stebbins
P.O. Box 22
Stebbins, AK 99671
Phone 907-934-3451
Fax 907-934-3452
E-mail stebbins_city@yahoo.com

Stebbins Native Corporation
P.O. Box 71110
Stebbins, AK 99671
Phone 907-934-3074
Fax 907-934-2399
E-mail snc@gci.net

**Stebbins Community Association
Stebbins Native Corporation
City of Stebbins**

**A Joint Resolution Adopting the Stebbins Comprehensive
Plan of July 2012**

Joint Resolution 12-01


WHEREAS, the Stebbins Community Association is the governing body for the federally recognized Tribe of Stebbins whose members are predominantly Yupik Eskimo, and

WHEREAS, the Stebbins Native Corporation is a corporation created under the Alaska Native Lands Claims Settlement Act, which holds title to the surface and subsurface rights of substantial property in Stebbins, and

WHEREAS, the City of Stebbins is the governing body for the City of Stebbins, a second class city, which provides city services in Stebbins, and

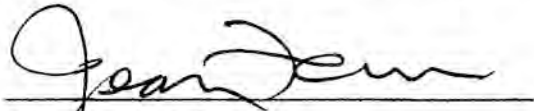
WHEREAS, the Stebbins Comprehensive Plan of May 2012 represents the wishes of the community of Stebbins.

NOW, THEREFORE BE IT RESOLVED that the Board of Directors of the Stebbins Community Association, the City Council of the City of Stebbins and the Board of Directors of Stebbins Native Corporation jointly adopt the Stebbins Comprehensive Plan of May 2012.



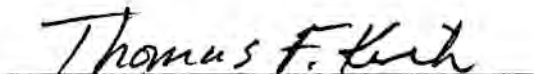
Ronald Kirk, President
Stebbins Community Association

Date 7/19/12



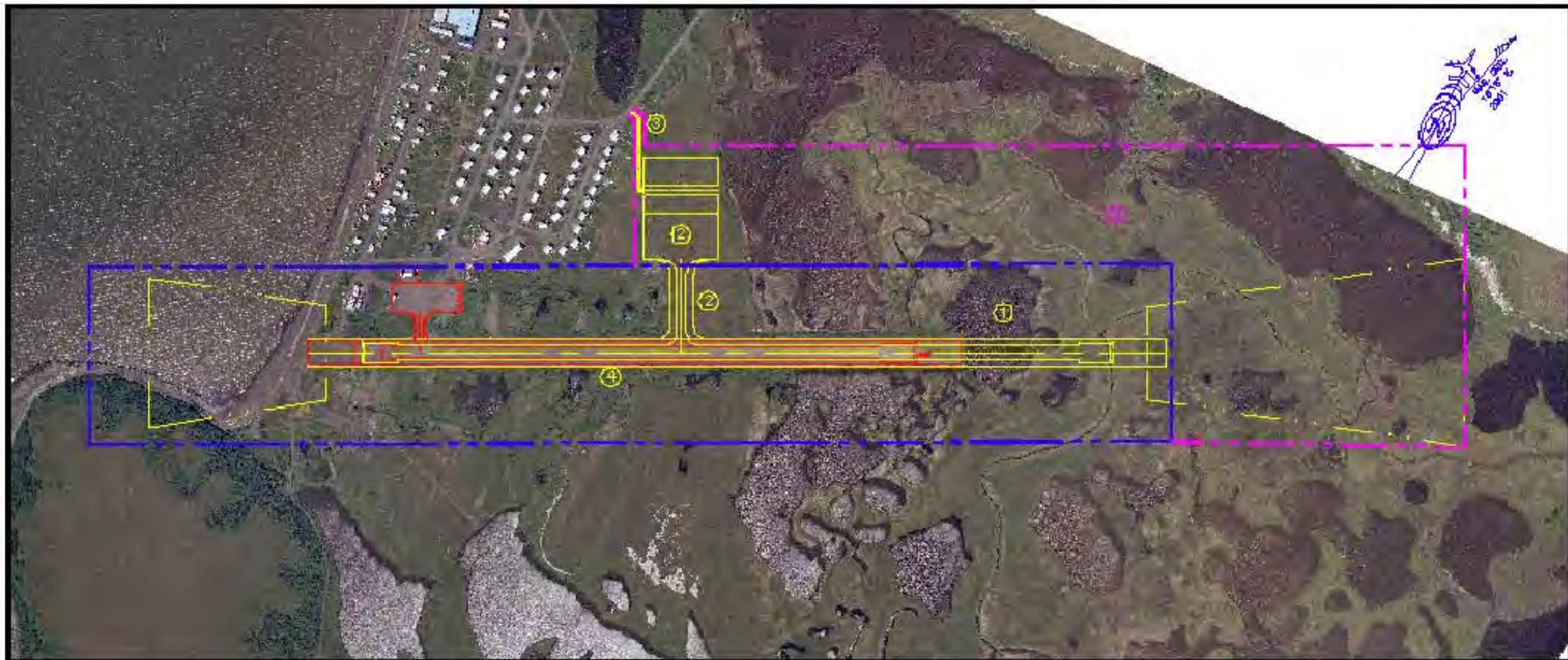
Jean Ferris, Mayor
City of Stebbins

Date 7/19/12



Thomas Kirk, Acting President
Stebbins Native Corporation

Date 7/19/2012



RED = EXISTING FACILITIES
 BLUE = EXISTING PROPERTY LINE
 YELLOW = PROPOSED IMPROVEMENTS
 MAGENTA = NEW PROPERTY ACQUISITION

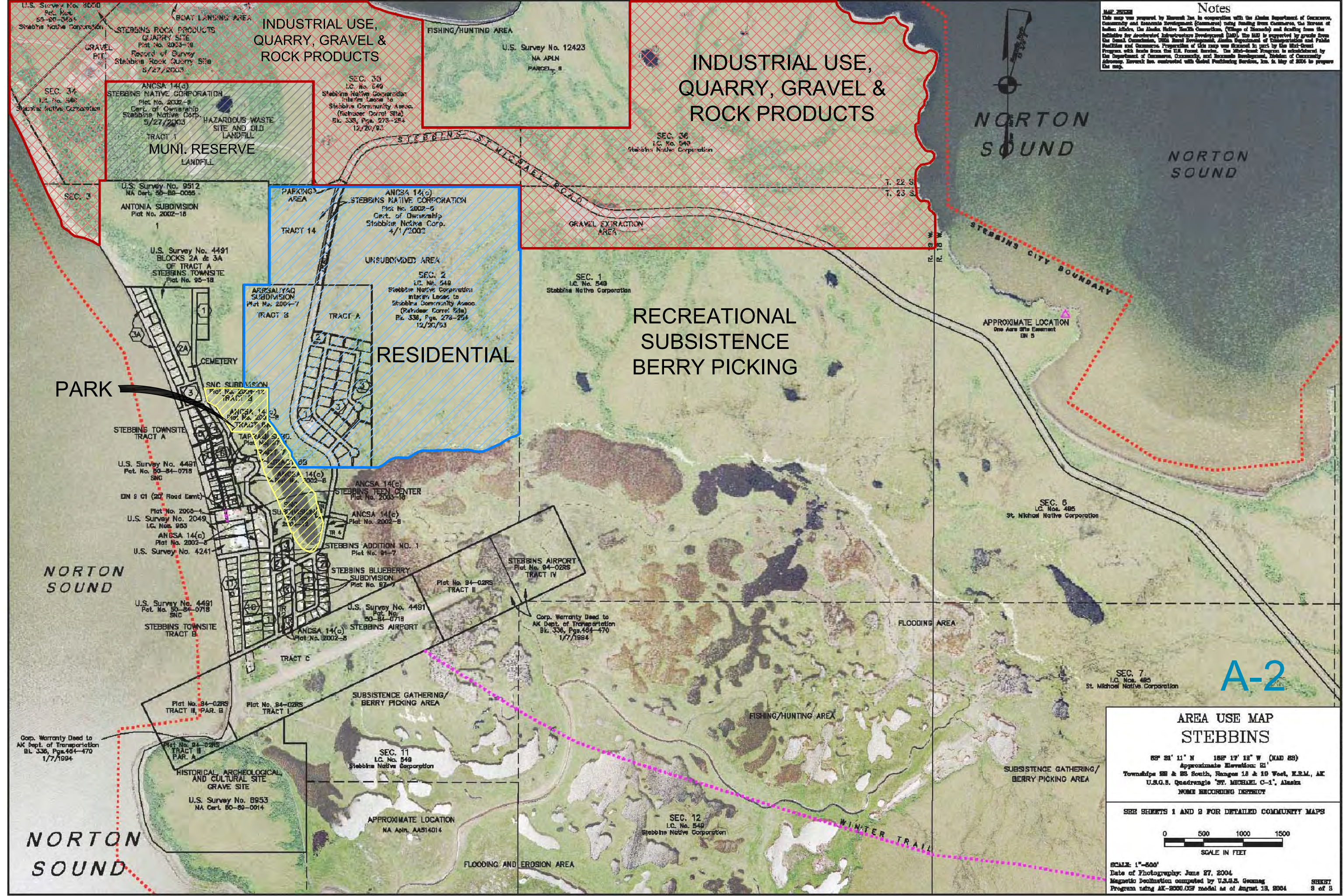
PROPOSED IMPROVEMENTS

- ① INCREASE RUNWAY LENGTH TO 4,000-FT, INCREASE RUNWAY SAFETY AREA TO 150-FT X 4600-FT.
- ② RELOCATE TAXIWAY AND APRON.
- ③ NEW ACCESS ROAD
- ④ INSTALL NEW AIRPORT LIGHTING
- ⑤ ACQUIRE ADDITIONAL RIGHT-OF-WAY.

A-1

STATE OF ALASKA DEPARTMENT OF TRANSPORTATION AND PUBLIC FACILITIES	
STEBBINS AIRPORT IMPROVEMENTS/622609	
STEBBINS, ALASKA	
DATE: 2/2/05	FIGURE 2

Notes
 This map was prepared by Everest Inc. in cooperation with the Alaska Department of Commerce, Community and Economic Development (Commerce) using funding from Commerce, the Bureau of Indian Affairs, the Alaska Native Health Commission, (State of Alaska) and funding from the Initiative for Sustainable Infrastructure Development (ISID). The map is supported by grants from the Alaska Department of Transportation and Public Facilities and Commerce. Preparation of this map was financed in part by the State of Alaska with funds from the U.S. Federal Highway Program. The Map-Grant Program is administered by the Department of Commerce, Community and Economic Development, Division of Community Advancement. Everest Inc. contracted with Global Positioning Services, Inc. in May of 2004 to prepare this map.

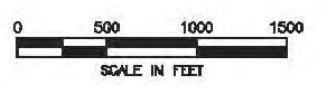


A-2

**AREA USE MAP
 STEBBINS**

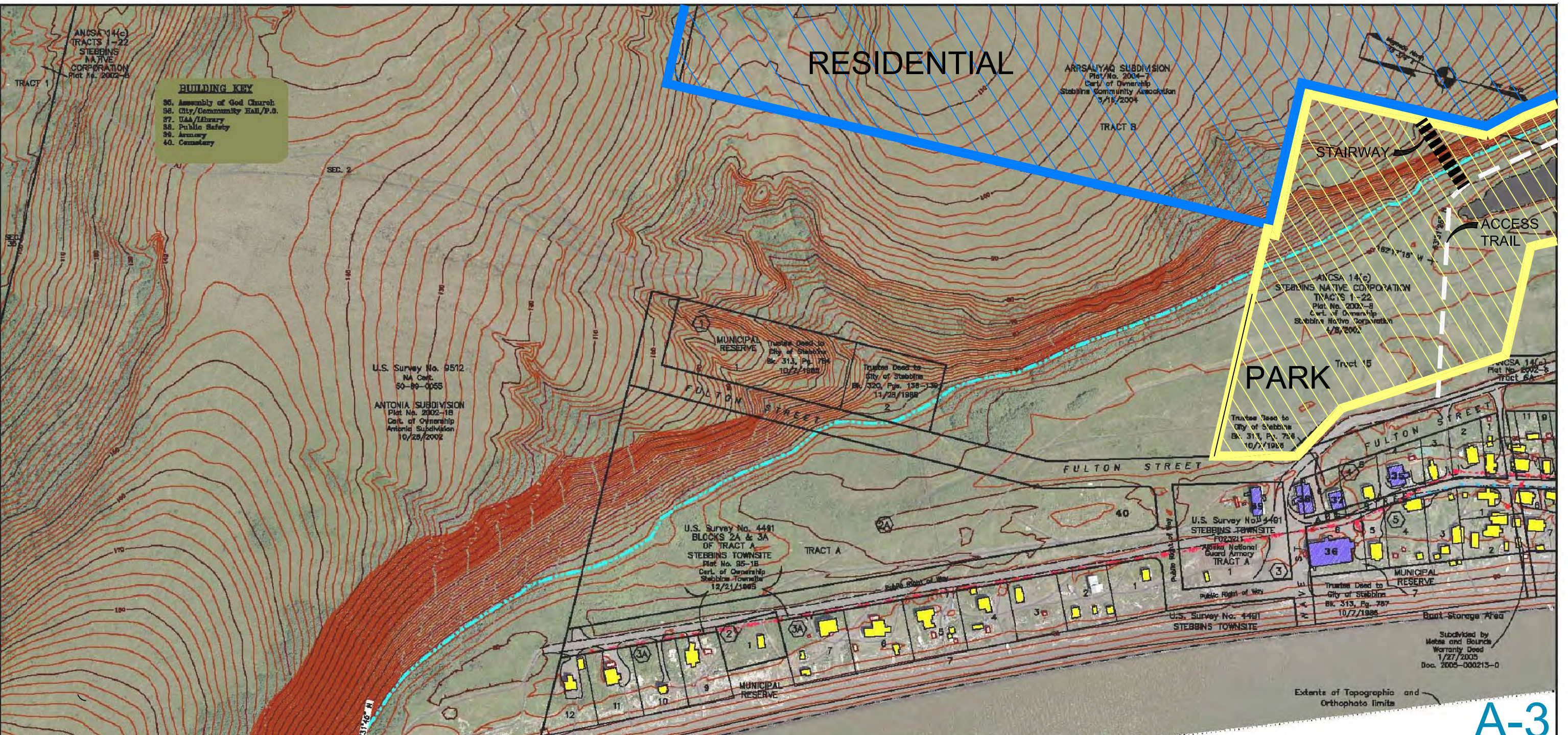
89° 21' 11" N 156° 17' 12" W (MAD 28)
 Approximate Elevation: 21'
 Townships 22 & 23 South, Ranges 18 & 19 West, E.R.M., AK
 U.S.G.S. Quadrangle "ST. MICHAEL C-1", Alaska
 NOME RECORDING DEPARTMENT

SEE SHEETS 1 AND 2 FOR DETAILED COMMUNITY MAPS



SCALE: 1"=500'
 Date of Photography: June 27, 2004
 Magnetic Declination computed by U.S.G.S. Geomag
 Program using AK-8000.GPJ model as of August 13, 2004

STEBBINS AREA USE MAP SHEET 3 1"=500' (2004 PHOTOGRAPHY) SHEET 3 of 3



BUILDING KEY

- 36. Assembly of God Church
- 38. City/Community Hall/P.O.
- 37. UAA/Library
- 38. Public Safety
- 39. Armory
- 40. Cemetery

RESIDENTIAL

PARK

**INDUSTRIAL USE
QUARRY, GRAVEL &
ROCK PRODUCTS**

NORTON SOUND

STAIRWAY

ACCESS TRAIL

A-3

MAP NOTES

This map was prepared by Everest Inc. in cooperation with the Alaska Department of Commerce, Community and Economic Development (Commerce) using funding from Commerce, the Bureau of Indian Affairs, the Alaska Native Tribal Health Consortium, and funding from the Initiative for Accelerated Infrastructure Development (IAID). The IAID is supported by grants from the Internal Commerce, U.S. Rural Development, Alaska Department of Transportation and Public Utilities, and Commerce. Preparation of this map was financed in part by the IAID-Grant Program with funds from the U.S. Rural Development. The IAID-Grant Program is established by the Department of Commerce, Community, and Economic Development, Division of Community Assistance. Everest Inc. contracted with Global Positioning Services, Inc. in May of 2004 to prepare the map.

This map should not be construed as a survey. On-site surveys should be conducted prior to construction of construction.

This map was compiled to meet horizontal and vertical accuracy in accordance with national map accuracy standards.

Property and utility information has been gathered from readily available sources with limited accuracy checks. Property information is not intended to represent a title search of the Bering City records. Utility location is approximate and shown only for reference. No warranty is made for this information. Generally, the information is current as of December 2004.

The Alaska Native Tribal Health Consortium, and Village Site Water provided excellent facility records.

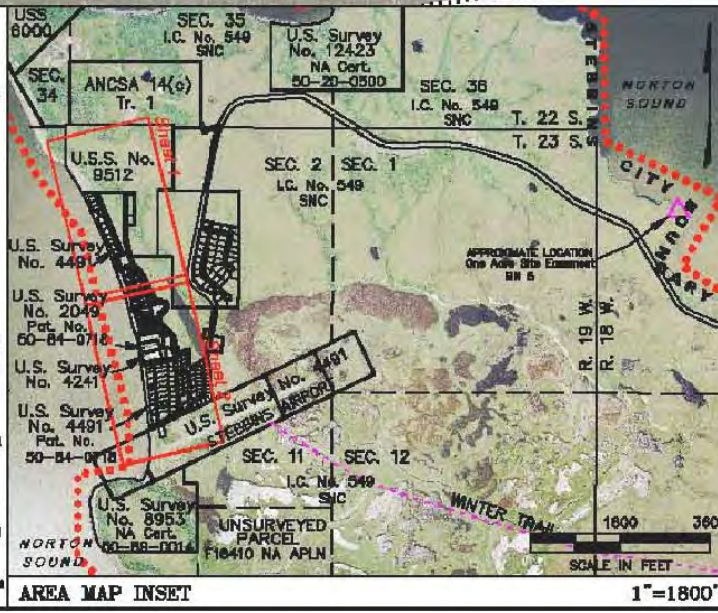
This map is based on photography acquired on June 27, 2004 at a nominal scale of 1 in = 800 ft. Everest Inc. prepared the orthophoto and topographic mapping. The orthophoto is an aerial photo which has been corrected, by registration to ground control stations, to remove distortion and warpage due to ground topography and aircraft tilt and tilt.

HORIZONTAL AND VERTICAL CONTROL

The control monument for the digital orthophoto was U.S.G.S. "TOWNSHIP 22 NORTH 12 WEST" Published horizontal datum NAD 83 coordinates for this monument are North 09° 09' 00.000" and West 109° 10' 12.000". The published vertical height for this monument is 235 meters.

The city of Stebbins has been adjusted to this control using high-precision GPS methods and the adjusted coordinates and elevation for monument "T22, T22 N12 W" were calculated to establish a local control reference. The NAD 83 coordinates for this monument are North 09° 09' 10.0000" and West 109° 10' 12.0000" and the local elevation is 235.00 feet above mean sea level (MSL).

The contours were prepared at two (2) foot contour intervals with index contours every ten (10) feet. Due to the steepness of the terrain, the two foot contours have been omitted, showing only the index contours for clarity.



**Community Map
STEBBINS**

68° 51' 11" N 162° 17' 12" W (RAD 83)
Approximate Elevation: 51'
Township 22 & 23 South, Range 18 & 19 West, E.R.M., AK
U.S.G.S. Quadrangle "ST. MICHAEL C-1", Alaska
CAPE NOMA RECORDING DISTRICT

LEGEND

Residential Building	Edge of Water
Commercial Building	Electric Line and Telephone w/ Pole
Public Building	Telephone Line
Culvert	Sewer Line
Street Light	Sewer Force Main
Runway Marker	Water Line
Power Pole	100 Year High Water Flood Line

0 100 200 300
SCALE IN FEET

SCALE: 1"=100'
Date of Photography: June 27, 2004
Magnetic Declination computed by U.S.G.S. Geospatial Program using AK-8000.00W model as of August 15, 2004.

SHEET 1 of 5



STEBBINS COMMUNITY MAP SHEET 1 1"=100' (2004 PHOTOGRAPHY)



PARK

ACCESS TRAIL

PARK NOTE:
 MAINTAIN 100'
 SETBACK FROM LAKE

Extents of Topographic and
 Orthophoto Limits

STEBBINS CITY BOUNDARY

NORTON SOUND

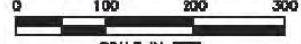
STEBBINS CITY BOUNDARY

**Community Map
 STEBBINS**

63° 51' 11" N 152° 17' 12" W (NAD 83)
 Approximate Elevation: 21'
 Townships 22 & 23 South, Ranges 18 & 19 West K.R.M., AK
 U.S.G.S. Quadrangle "ST. MICHAEL C-1," Alaska
 CAPE NOMS RECONCILING DISTRICT

LEGEND

- Commercial Building
- Residential Building
- Public Building
- Tract 15, Tract B ANCSA 14(c)
- Beams of Coordinates
- High Water Elevation Sign
- Street Light
- Runway Marker
- Power Pole
- Electric Line and Telephone w/ Pole
- Telephone Line
- Sewer Line
- Sewer Force Main
- Water Line
- Edge of Water
- 100 Year High Water Flood Line
- Culvert



SCALE 1"=100'
 Date of Photography: June 27, 2004
 Magnetic Declination computed by U.S.G.S. Geomag
 Program using AK-2000.COP model as of August 18, 2004

BUILDING KEY

1. AVEC Fuel Tanks	19. Basketball Court
2. AVEC Power Plant	20. Stebbins Native Corporation
3. Airport Terminal	21. Wastewater
4. Airport Light Equip. Bldg.	22. Water Treatment Plant
5. Snow Removal Equip. Bldg.	23. Water Tanks
6. Elder Center	24. Old Church
7. City Shop	25. Head Start
8. Tundra Store	26. Aleutik Telephone
9. City Maintenance Shop	27. Native Store Storage
10. AT&T Earth Station	28. Tugboat Fuel
11. SCA ISA	29. Stebbins Native Store
12. IMA Shed	30. Native Store Gas Pumps
13. Teacher Housing	31. Catholic Church
14. New School	32. Health Clinic
15. School Generator	33. GCI Earth Station
16. School Storage	
17. School Tank Farm	
18. Stebbins Native Corporation	

PLANNING DATA
 The U.S. Army Corps of Engineers (USACE) report "Alaska Communities Flood Hazard Data 2000" has a published 100 year flood elevation of 17.65 feet based upon the same vertical control. A flood gauge was installed on the southeast corner of the teacher's housing, a part of the old 2B school.

Plot 94-02R3
 TRACT II, PAR. B
 Permit, Avigation and Hazard
 Easement & Right-of-Way to
 AK Department of Transportation
 Bk. 294, Pgs. 553-555
 5/21/1980

A-4

STEBBINS COMMUNITY ASSOCIATION

P.O. Box 71002

Stebbins, Alaska 99671

PH. (907) 934-3561 / FAX 934-3560

Email: Stebbins_ira@yahoo.com



Date: 12/30/2013

To: S.J. Elena Strickling-Planning & Development Specialist E-mail: cpd.pds@kawerak.org

Community Planning & Development Division Ph.#-907-443-4253- Kawerak, Inc. -PO Box 948, Nome, AK 99762

Fr: Thomas F.Kirk-SCA IRA President- Stebbins Community Association ph.# 907-934-3561

PO Box 71002, Stebbins, AK 99671 Fx.# 907-934-3560-E-mail: stebbins_ira@yahoo.com

Simon,

The Stebbins Community Association IRA Council changed the Stebbins LEDP Top Priority Projects at the last Regular Meeting for tribal members of Stebbins, AK. The update is only from the tribal government of Stebbins, Alaska, and does not reflect the other governing agencies. We will notify the other governing agencies within the community of Stebbins about the changes to the LEDP for Stebbins and will contact Kawerak, Inc. for updates.

The new LEDP for the tribal government are: 1) Water & Sewer

- 2) Suicide Prevention Program
- 3) Safe Homes
- 4) Housing Development
- 5) Yupik Language Program
- 6) Teach & Record Traditional Skills
- 7) Job Trainings
- 8) Build a Tannery
- 9) Multi-Purpose Evacuation Center
- 10) Fire Department

If there may be any questions or comments, please do not hesitate to contact the Stebbins Community Association pertaining to the new LEDP the SCA Tribal Council changed and adopted at the December 2013 Regular Meeting. The SCA number is 907-934-3561, Monday-Friday, 9 am to 5 pm.

Respectfully Submitted

Thomas F. Kirk-SCA IRA President